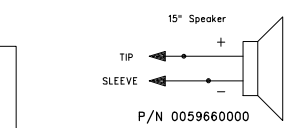
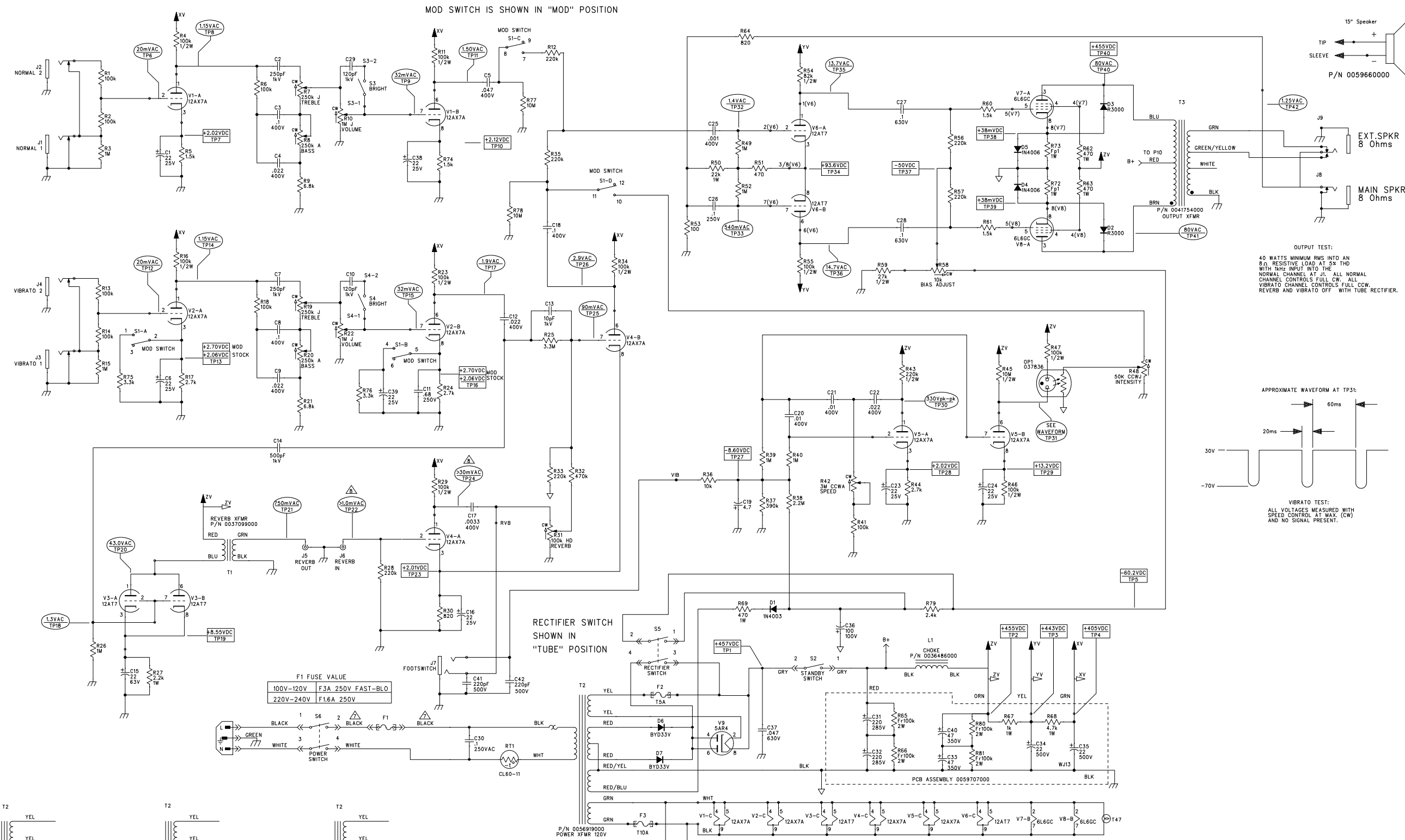
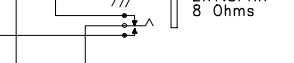


REVISIONS			
REV.	DESCRIPTION	DATE	APPROVED
A	PR532	27-AUG-02	L E L

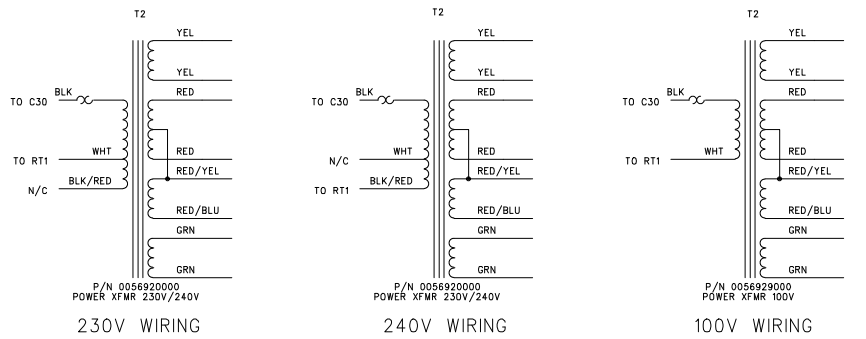


OUTPUT TEST:
40 WATTS MINIMUM RMS INTO AN 8Ω RESISTIVE LOAD AT 5K THD WITH 1kHz INPUT INTO THE NORMAL CHANNEL AT J1. ALL NORMAL CHANNEL CONTROLS FULL CW. ALL VIBRATO CHANNEL CONTROLS FULL CCW. REVERB AND VIBRATO OFF WITH TUBE RECTIFIER.



VIBRATO TEST:
ALL VOLTAGES MEASURED WITH SPEED CONTROL AT MAX (CW) AND NO SIGNAL PRESENT.

F1 FUSE VALUE	
100V-120V	F3A 250V FAST-BLO
220V-240V	F1.6A 250V



- ALL VOLTAGES MEASURED WITH RESPECT TO GROUND USING A 20KΩ IMPEDANCE AT LEAST 100Ω AC INPUT IMPEDANCE AND 10MΩ DC IMPEDANCE. VOLTAGES MAY VARY ±20% TEST CONDITIONS.
- ALL TESTPOINTS MEASURED WITH A 1kHz SINEWAVE INPUT TO NORMAL CHANNEL ONLY.
- ALL POLARIZED CAPACITORS IN μF, 20% 50V MINIMUM. (POWER SUPPLY BYPASS CAPACITORS ARE 20%).
- ALL UNPOLARIZED CAPACITORS IN μF, 10% OR BETTER; 50V MINIMUM. (POWER SUPPLY BYPASS CAPACITORS ARE 20%).
- ALL RESISTORS IN OHMS, 5% 1/4W.
- TP22 AND TP24 VALUES ARE DEPENDENT UPON SPECIFIC EXCITATION FREQUENCY AND PARTICULAR REVERB PAN RESPONSE.
- FUSE HOLDER CONNECTIONS ARE TO BE AS FOLLOWS:
BLACK WIRE - FROM S6 TO FUSE HOLDER TIP
BLACK WIRE - FROM C30 TO FUSE HOLDER RING
- LAST REFERENCE: C42, D7, F3, J9, OPI, R78, S6, T3
- THIS SCHEMATIC IS FOR PCB FABRICATION P/Ns 005968000 AND 005965900. PCB ASSY P/Ns 005970600 AND 005970700. AND CHASSIS ASSY P/N 0059739000.

THIS DOCUMENT CONTAINS INFORMATION OF A PROPRIETARY NATURE TO FENDER MUSICAL INSTRUMENTS AND IS SUBMITTED TO YOU IN CONFIDENCE AND SHALL NOT BE DISCLOSED OR TRANSMITTED TO OTHERS WITHOUT AUTHORIZATION FROM FENDER MUSICAL INSTRUMENTS.

Fender MUSICAL INSTRUMENTS
Corona, CA U.S.A.

CHECKED BY: _____ DATE: _____
APPROVED BY: _____ DATE: _____
DRAWN: LORENZEN ENGR: L.LORENZEN DATABASE FILE: Z532S.SCH

TITLE: SERVICE DIAGRAM, COMBINED (schematic)
'64 VIBROVERB CUSTOM AMPLIFIER

SIZE	DRAWING NUMBER	REV.
D	0059708000	A

RELEASE DATE: 27-AUG-02 SHEET: 1 OF 2

8

7

6

5

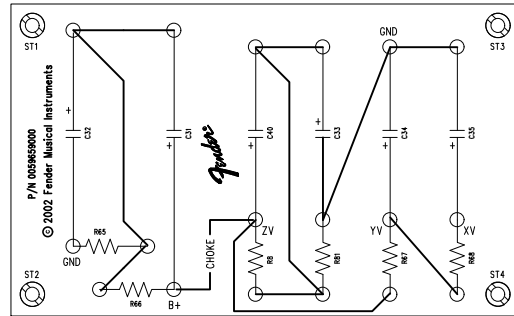
4

3

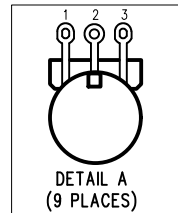
2

1

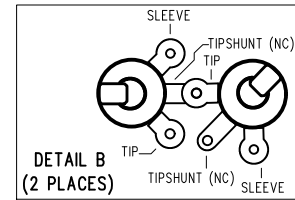
REVISIONS			
REV.	DESCRIPTION	DATE	APPROVED
A	PR532	27-AUG-02	L E L



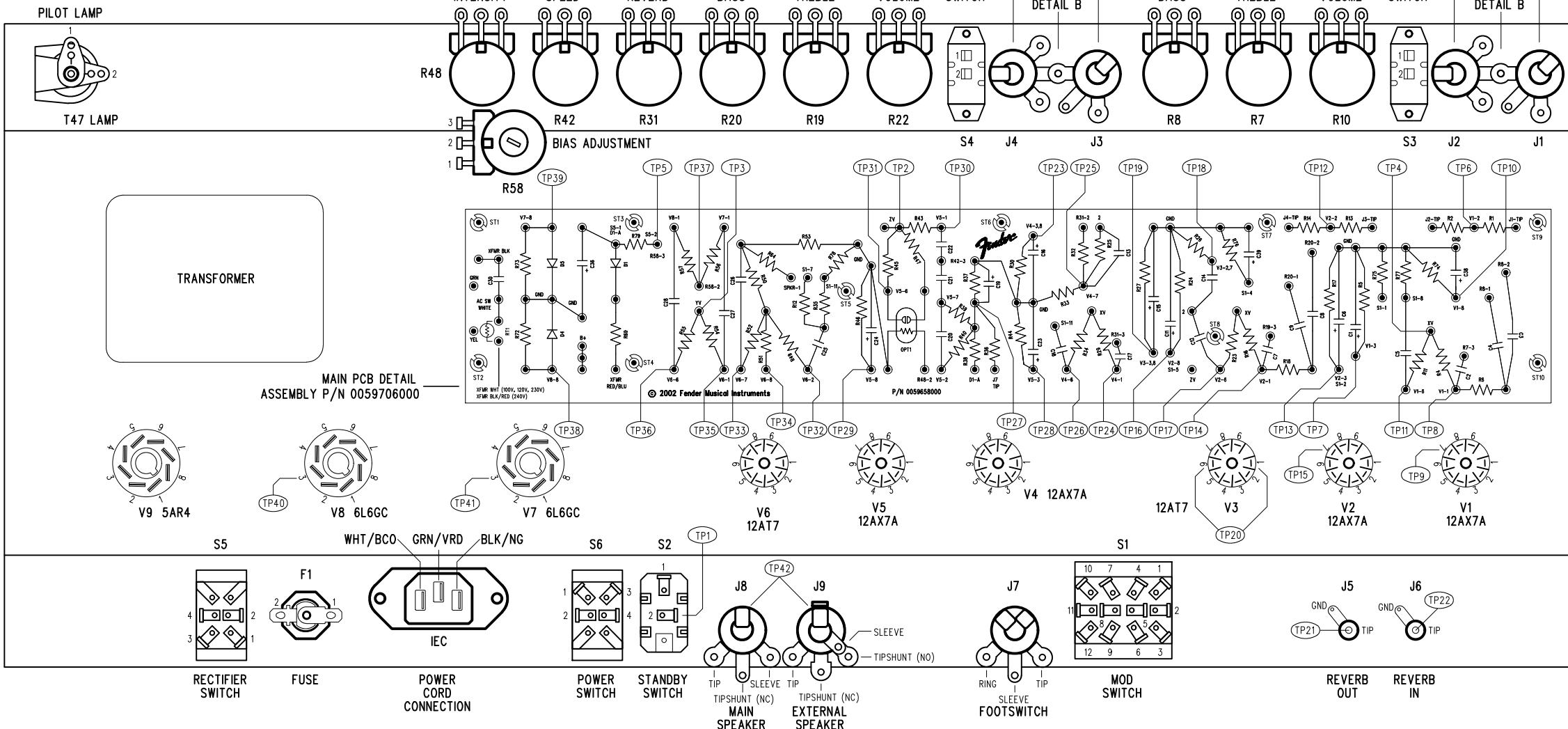
FILTER CAPACITOR PCB DETAIL
ASSEMBLY P/N 0059707000



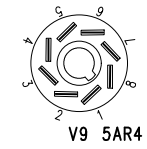
DETAIL A
(9 PLACES)



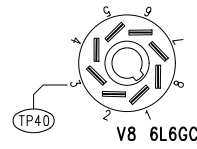
DETAIL B
(2 PLACES)



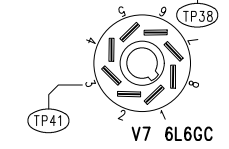
MAIN PCB DETAIL
ASSEMBLY P/N 0059706000



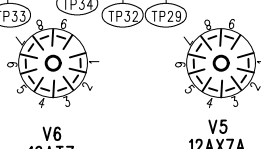
V9 5AR4



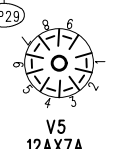
V8 6L6GC



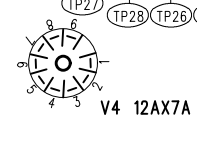
V7 6L6GC



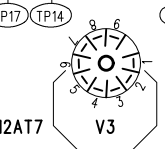
V6 12AT7



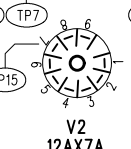
V5 12AX7A



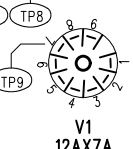
V4 12AX7A



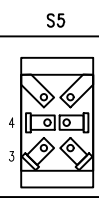
V3 12AX7A



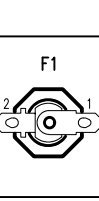
V2 12AX7A



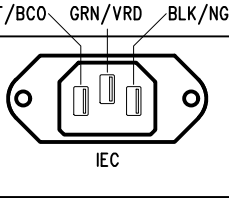
V1 12AX7A



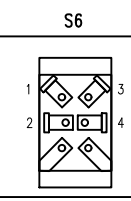
RECTIFIER SWITCH



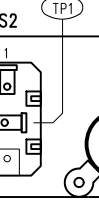
FUSE



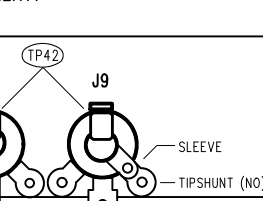
POWER CORD CONNECTION



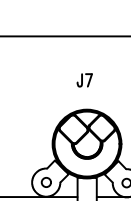
POWER SWITCH



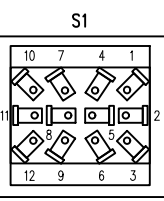
STANDBY SWITCH



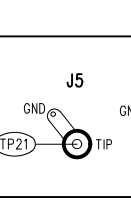
MAIN SPEAKER
EXTERNAL SPEAKER



FOOTSWITCH



MOD SWITCH



REVERB OUT
REVERB IN

FILM/DWG: SERVICE DIAGRAM
DATABASE: Z532P1PCB DATE: 27-AUG-02

1. WIRES NOT SHOWN FOR CLARITY.
NOTES: (UNLESS OTHERWISE NOTED)

THIS DOCUMENT CONTAINS INFORMATION OF A PROPRIETARY NATURE TO FENDER MUSICAL INSTRUMENTS AND IS SUBMITTED TO YOU IN CONFIDENCE AND SHALL NOT BE DISCLOSED OR TRANSMITTED TO OTHERS WITHOUT AUTHORIZATION FROM FENDER MUSICAL INSTRUMENTS.		MUSICAL INSTRUMENTS Corona, CA U.S.A.	
CHECKED BY: _____ DATE: _____		TITLE: SERVICE DIAGRAM, COMBINED (PCB assy) '64 VIBROVERB MAIN PCB	
APPROVED BY: _____ DATE: _____		SIZE: D	DRAWING NUMBER: 0059708000
DRAWN: D. FOX	ENGR: L. LORENZEN	DATABASE FILE: Z532P1PCB	REV: A
		RELEASE DATE: 27-AUG-02	SHEET 2 OF 2

8

7

6

5

4

3

2

1