



SQ12M MONITOR SPEAKER

p/n 071-0140-000

SERVICE MANUAL

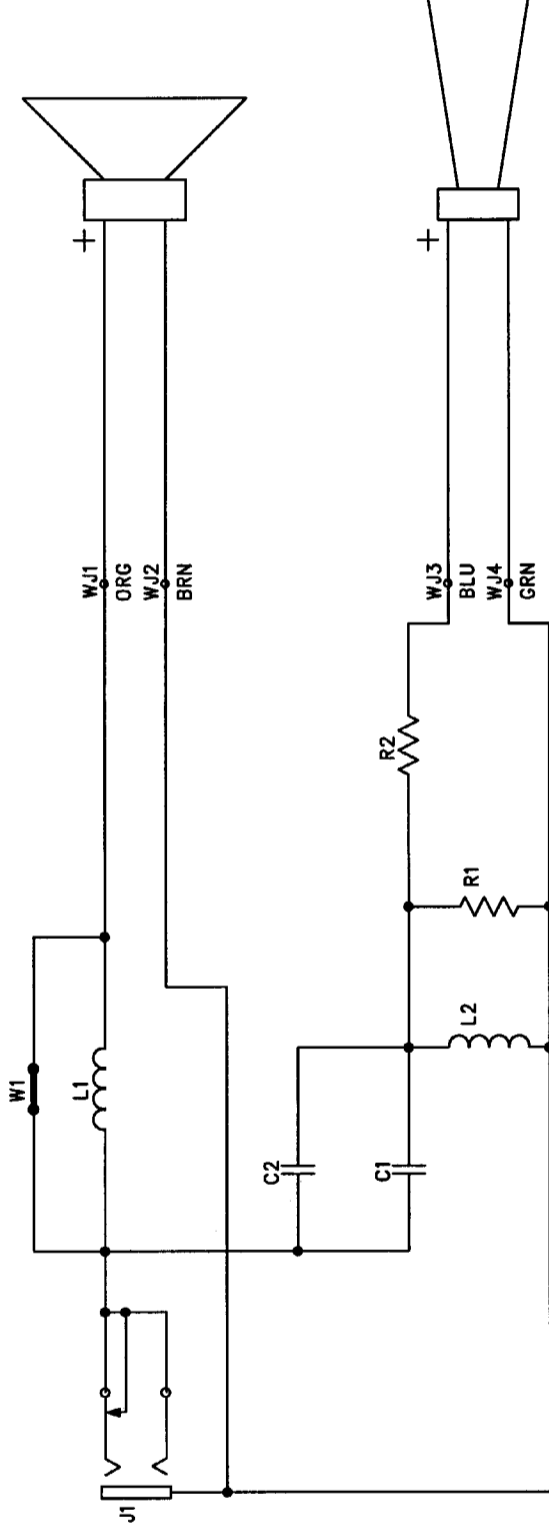


CONTENTS:

Service diagram.....	2
Cabinet assembly	3
End item assembly	4

R E V I S I O N S

REV.	DESCRIPTION	DATE	APPROVED
A	PR355	23-APR-97	F M L
B	PR389	11-NOV-97	R.J.D
C	PR432	30-SEP-99	J.K.H



MODEL	PCB ASSY	R1	R2	C1	C2	L1	L2	W1
LTB-10/SQ10	0051497000	15 OHM 15W	47 OHM 2W	2.2 uF 100V	N/A	0.47mH	0.27mH	N/A
LTB-12	0053643000	15 OHM 15W	47 OHM 2W	2.2 uF 100V	N/A	N/A	0.47mH	JUMPER
SQ12	0056356000	24 OHM 10W	22 OHM 2W	N/A	0.68 uF 250V	N/A	N/A	JUMPER
SQ15	0056357000	24 OHM 10W	22 OHM 2W	N/A	1.0 uF 250V	N/A	N/A	JUMPER

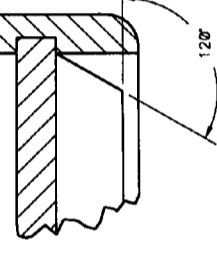
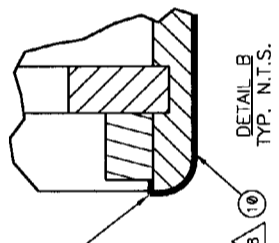
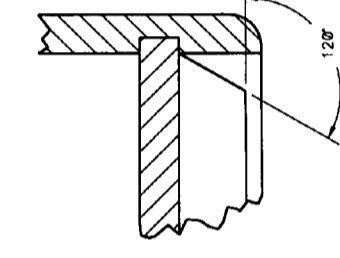
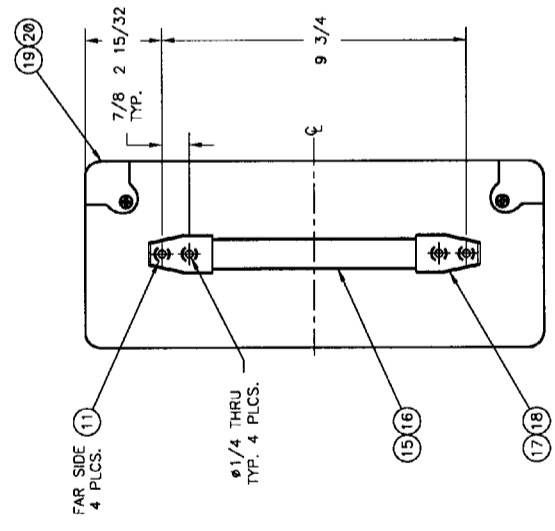
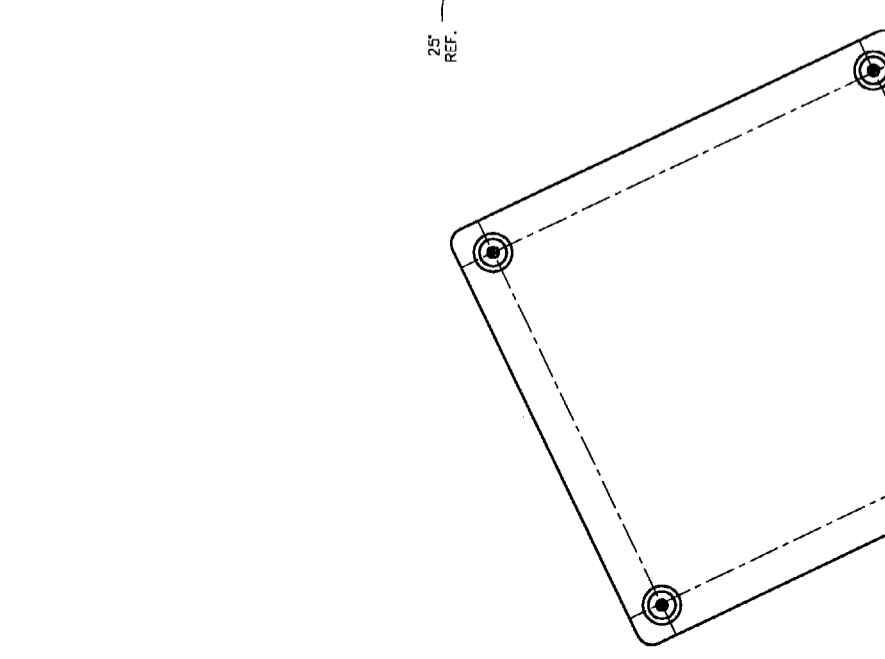
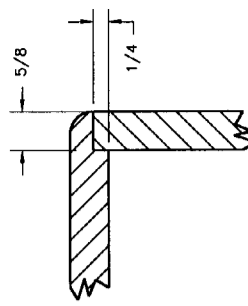
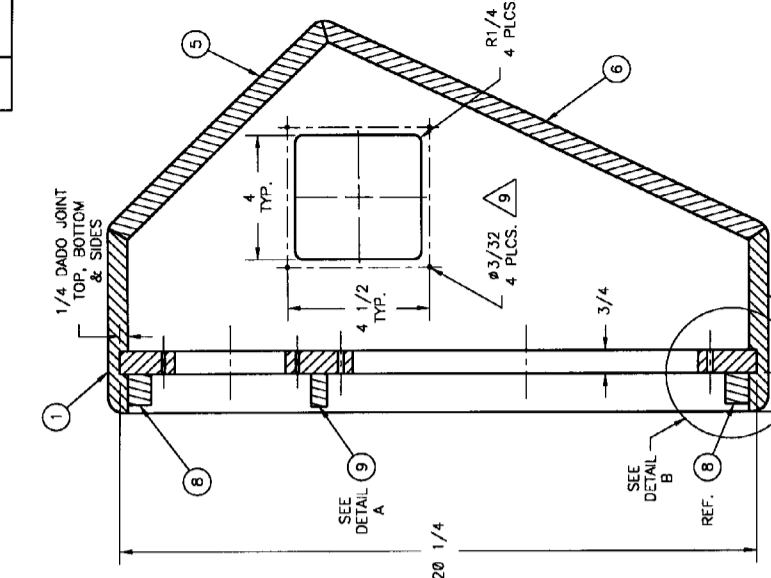
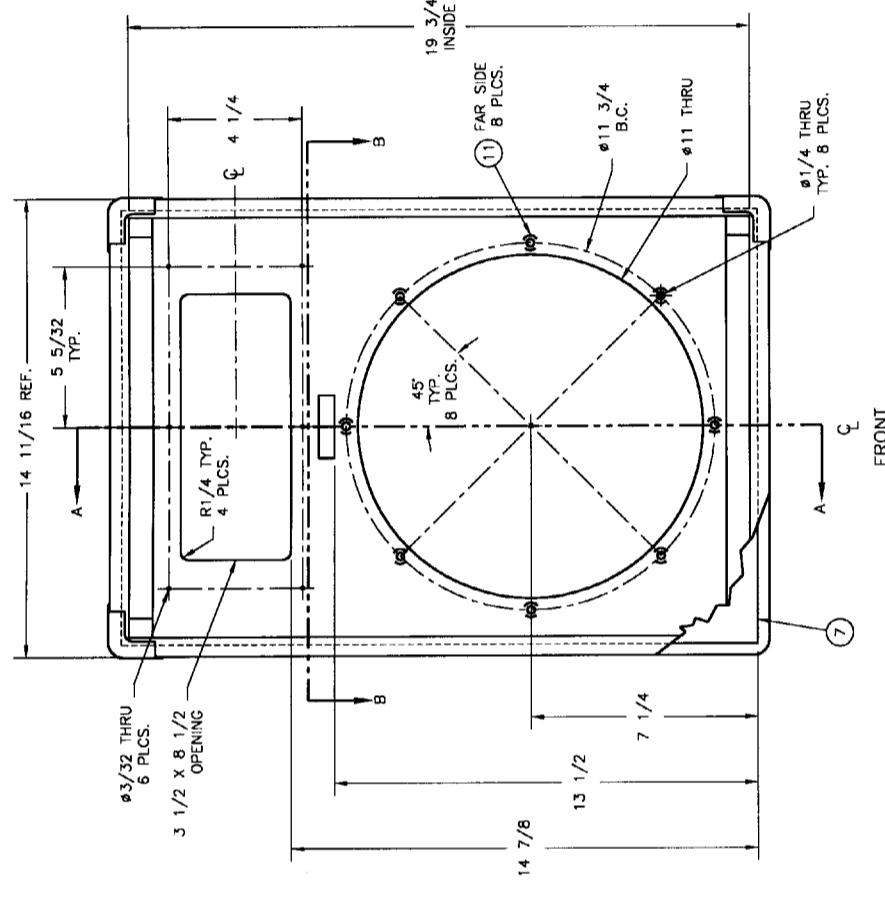
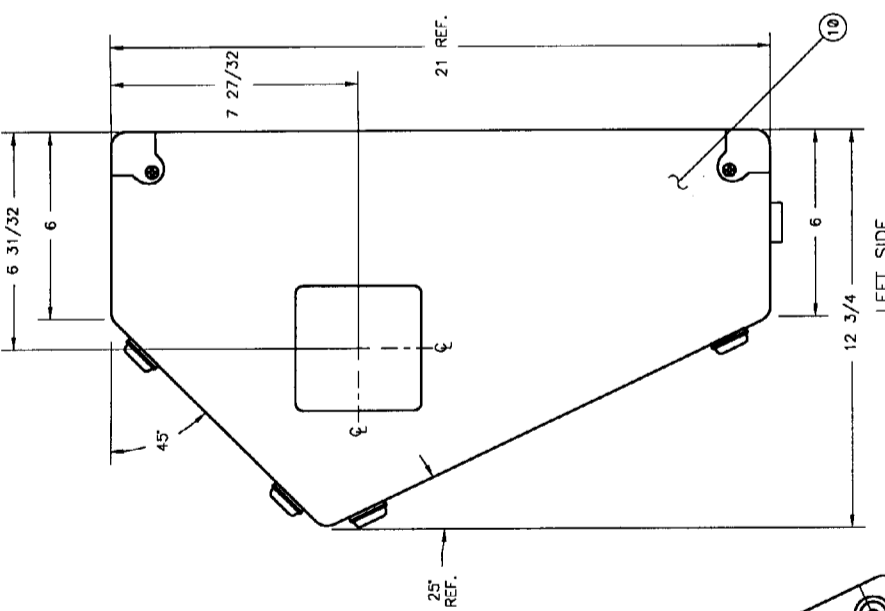
THIS DOCUMENT CONTAINS INFORMATION OF A PROPRIETARY NATURE TO FENDER MUSICAL INSTRUMENTS AND IS SUBMITTED TO YOU IN CONFIDENCE AND SHALL NOT BE DISCLOSED OR TRANSMITTED TO OTHERS WITHOUT AUTHORIZATION FROM FENDER MUSICAL INSTRUMENTS.

CHECKED BY: B Dees
 DATE: 27-OCT-99
 APPROVED BY: J. HUBBARD
 DATE: 27 OCT 99
 DRAWN: A. Barnai ENGR: J. Hubbard
 DATABASE FILE: Z432S.SCH

Fender MUSICAL INSTRUMENTS
 2621 Research Drive
 Corona, CA 91720 USA

TITLE: SERVICE DIAGRAM, COMBINED (schematic)
 LTB/SQ
 SPEAKER CROSSOVER
 SIZE **B** DRAWING NUMBER **0051495000** REV. **C**
 RELEASE DATE: 30-SEP-99 SHEET: 1 OF 1

3. THIS SCHEMATIC IS FOR PCB FAB P/N 0051496000 AND PCB ASSEMBLY P/Ns 0051497000, 0053643000, 0056356000 AND 0056357000.
 2. ALL UNPOLARIZED CAPACITORS IN uF; 100V (MIN). 10% OR BETTER.
 1. ALL RESISTORS IN OHMS; 1/4 WATT, 5%.
- NOTES: (UNLESS OTHERWISE NOTED)



TOP & BOTTOM JOINERY

20	4	0031867000	CORNER 2 HOLE w/NOTCH BLK PWDR
19	8	0026576000	SCRW SMA 8x5/8 THP BLACK
18	4	0017393000	SCRW M 10-32x1-1/8 OHP BLX
17	2	0031845000	HANDLE CAP 2 HOLE BLK PWDR
16	1	0032524000	INSERT HANDLE
15	1	0027846000	HANDLE 9.25" NO LOGO
14	8	0017942000	SCRW WOOD 8X1 FHP BLX
13	8	0019275000	INSERT GLIDE CUSHION 1.27 DIA
12	8	0027849000	GLIDE CAB 1.24x.335 BLX WAX
11	12	0021972000	NUT T 10-32x3/4 STR 3 PRNG BLX
10	A/R	0051949000	LIGHTWEIGHT VINYL COVERING
9	1	0056593009	CLEAT NOSE 2 x 1/2 x 1 1/8 PARTICLE BOARD
8	2	0056593008	CLEAT 13 7/16 x 1 x 3/4 PARTICLE BOARD
7	1	0056593007	CABINET BAFFLE
6	1	0056593006	CABINET BACK LOWER
5	1	0056593005	CABINET BACK UPPER
4	1	0056593004	CABINET SIDE RIGHT
3	1	0056593003	CABINET SIDE LEFT
2	1	0056593002	CABINET BOTTOM
1	1	0056593001	CABINET TOP

MATERIAL SEE NOTES

FINISH ALL EXPOSED SURFACES TO BE PAINTED BLACK

TOL. UNLESS NOTED
 FRACT. + 1/32
 .X + 0.050
 .XX + 0.010
 .XXX + 0.010
 ANGLES ± 0.5 DEGREES
 UNMARKED ANGLES ARE 90 DEGREES.

MATERIAL SEE NOTES

FINISH ALL EXPOSED SURFACES TO BE PAINTED BLACK

TOL. UNLESS NOTED
 FRACT. + 1/32
 .X + 0.050
 .XX + 0.010
 .XXX + 0.010
 ANGLES ± 0.5 DEGREES
 UNMARKED ANGLES ARE 90 DEGREES.

ENGINEER J. HUBBARD
 DRAWN J. RICHARDS
 DATE 11/19/99

DFT. 04/13/2000
 DATE 04/13/2000
 APPROVED J. HUBBARD
 DATE 04/13/2000

TITLE CABINET ASSEMBLY
 FENDER MUSICAL INSTRUMENTS CORP.
 CORONA, CALIFORNIA U.S.A.

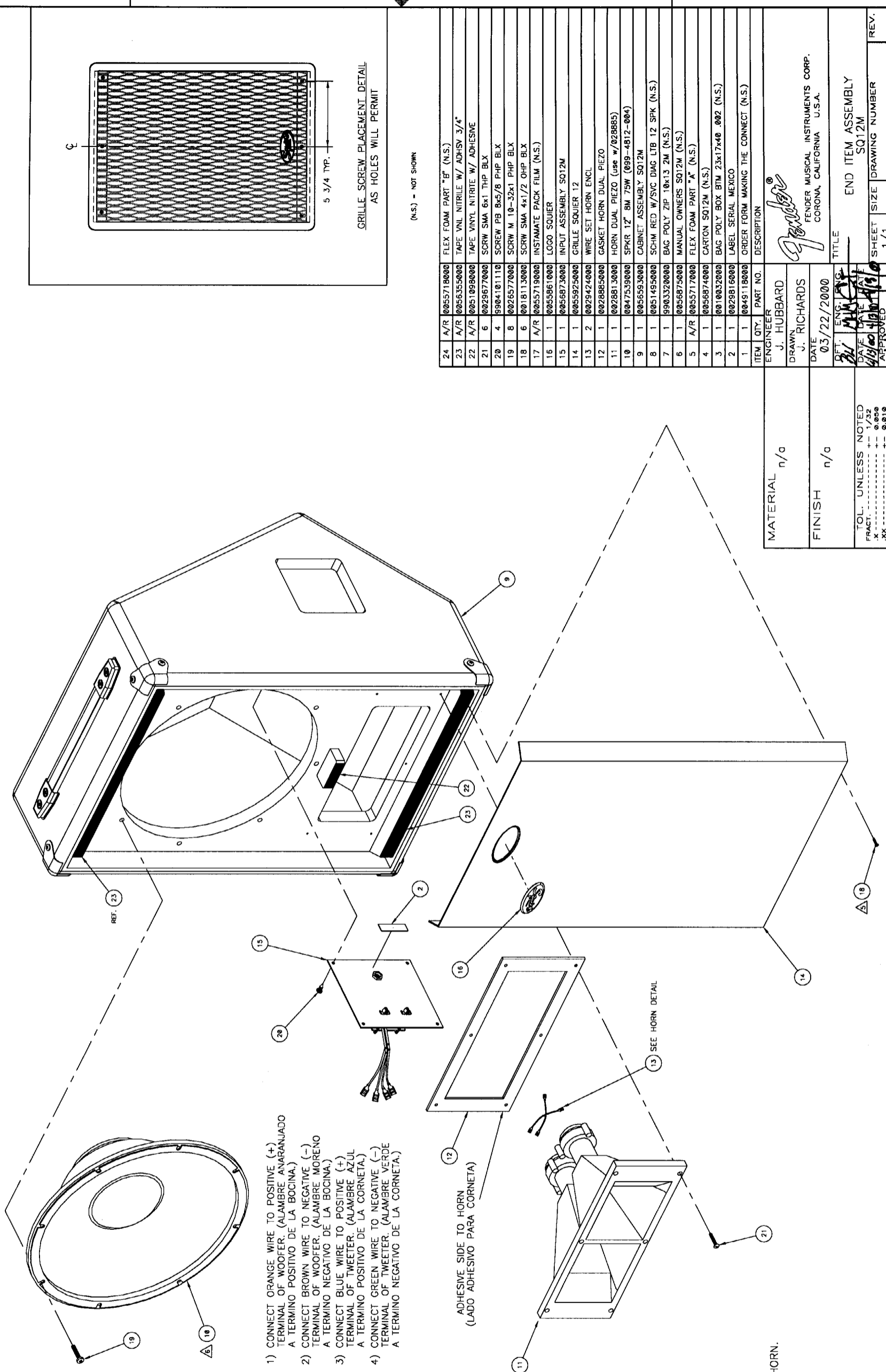
SHEET SIZE D 0056593000
 SCALE N/A
 DRAWING NUMBER D
 REV. A

1. DO NOT SCALE DRAWING.
 2. ALL DIMENSIONS ARE IN INCHES.
 3. - 3 - SAMPLES OF FIRST PARTS MUST BE APPROVED BY FENDER R&D BEFORE STARTING PRODUCTION.
 4. COPYRIGHT - 2000 - FENDER MUSICAL INSTRUMENTS CORP.
 5. ALL DIMS. FROM RADIUS CORNERS ARE FROM THE "POINT OF INTERSECTION" OR P.I.
 6. ALL HOLES DRILLED BEFORE COVERING.
 7. ALL CORNER RADI TO BE 1/2".
 8. PILOT HOLES 1/4" DEEP. NOT TO INCLUDE BAFFLE.
 9. MATERIAL: PARTICLE BOARD 0027503000 1/2" THK.
 10. MATERIAL: PARTICLE BOARD 0027504000 5/8" THK.
 11. MATERIAL: PARTICLE BOARD 0027502000 3/4" THK.
 12. FEET, CORNERS, AND HANDLE NOT SHOWN IN ALL VIEWS FOR CLARITY.

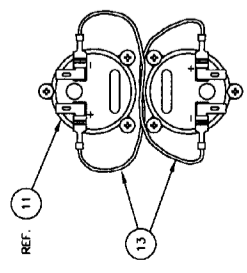
NOTES: UNLESS OTHERWISE NOTED

THE FOLLOWING SPEAKER INFORMATION IS A TRADE SECRET UNDER U.S. PATENT LAWS AND IS NOT TO BE DISCLOSED OR TRANSMITTED TO OTHERS WITHOUT AUTHORIZATION FROM FENDER MUSICAL INSTRUMENTS CORP.

REV	DESCRIPTION	DATE
A	PR 463	04/12/2000
JR		



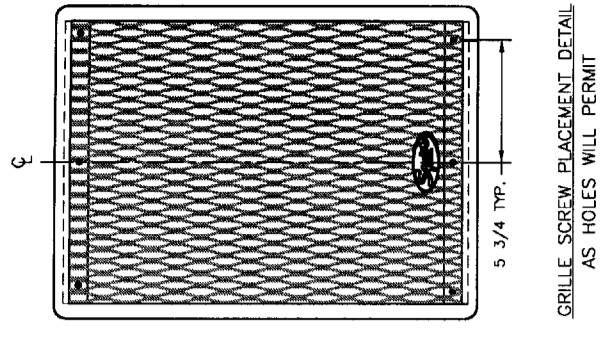
- 1) CONNECT ORANGE WIRE TO POSITIVE (+) TERMINAL OF WOOFER. (ALAMBRE ANARANJADO A TERMINO POSITIVO DE LA BOCINA.)
- 2) CONNECT BROWN WIRE TO NEGATIVE (-) TERMINAL OF WOOFER. (ALAMBRE MORENO A TERMINO NEGATIVO DE LA BOCINA.)
- 3) CONNECT BLUE WIRE TO POSITIVE (+) TERMINAL OF TWEETER. (ALAMBRE AZUL A TERMINO POSITIVO DE LA CORNETA.)
- 4) CONNECT GREEN WIRE TO NEGATIVE (-) TERMINAL OF TWEETER. (ALAMBRE VERDE A TERMINO NEGATIVO DE LA CORNETA.)



HORN WIRING DETAIL

ADHESIVE SIDE TO HORN
(LADO ADHESIVO PARA CORNETA)

SEE HORN DETAIL



GRILLE SCREW PLACEMENT DETAIL
AS HOLES WILL PERMIT

(N.S.) - NOT SHOWN

ITEM	QTY.	PART NO.	DESCRIPTION
24	A/R	0055718000	FLEX FOAM PART "B" (N.S.)
23	A/R	0056355000	TAPE VIN NITRILE W/ ADHSV 3/4"
22	A/R	0051098000	TAPE VINYL NITRILE W/ ADHESIVE
21	6	0029677000	SCRW SMA 6x1 THP BLX
20	4	9904101110	SCRW PB 8x5/8 PHP BLX
19	8	0026577000	SCRW M 10-32x1 PHP BLX
18	6	0018113000	SCRW SMA 4x1/2 OHP BLX
17	A/R	0055719000	INSTAMATE PACK FILM (N.S.)
16	1	0055861000	LOGO SOQUIER
15	1	0056873000	INPUT ASSEMBLY SQ12M
14	1	0055925000	GRILLE SOQUIER 12
13	2	0029424000	WIRE SET HORN ENCL
12	1	0028885000	GASKET HORN DUAL PIEZO
11	1	0028813000	HORN DUAL PIEZO (use w/028885)
10	1	0047539000	SPKR 12" 8M 75W (099-4812-004)
9	1	0056593000	CABINET ASSEMBLY SQ12M
8	1	0051495000	SCHM RED W/SVC DIAG LTB 12 SPK (N.S.)
7	1	9903320000	BAG POLY ZIP 10x13 2M (N.S.)
6	1	0056875000	MANUAL OWNERS SQ12M (N.S.)
5	A/R	0055717000	FLEX FOAM PART "A" (N.S.)
4	1	0056874000	CARTON SQ12M (N.S.)
3	1	0010032000	BAG POLY BOX BTM 23x17x40 .002 (N.S.)
2	1	0029816000	LABEL SERIAL MEXICO
1	1	0049118000	ORDER FORM MAKING THE CONNECT (N.S.)

MATERIAL	n/a
FINISH	n/a
TOL UNLESS NOTED	
FRACT.	1/32
X	0.050
.XX	0.010
.XXX	0.010
ANGLES	0.5 DEGREES
HOLE DIA.	+0.005 - 0.001
UNMARKED ANGLES ARE 90 DEGREES.	

ENGINEER	J. HUBBARD
DRAWN	J. RICHARDS
DATE	03/22/2000
PT. ENG. CHG.	
DATE	4/19/00
APPROVED	J. HUBBARD
DATE	13 APR 2000

TITLE	END ITEM ASSEMBLY
SIZE	SQ12M
SHEET	1/1
SCALE	N/A
DRAWING NUMBER	0710140000
REV.	A
ASSEMBLY	

1. DO NOT SCALE DRAWING.
2. ALL DIMENSIONS ARE IN INCHES.
3. - 3 - SAMPLES OF FIRST PARTS MUST BE APPROVED BY FENDER R&D BEFORE STARTING PRODUCTION.
4. COPYRIGHT - 2000 - FENDER MUSICAL INSTRUMENTS CORP.
5. SPEAKER TERMINALS POINT TOWARD THE HORN.
6. SEE GRILLE SCREW PLACEMENT DETAIL.

D C B A

8 7 6 5 4 3 2 1