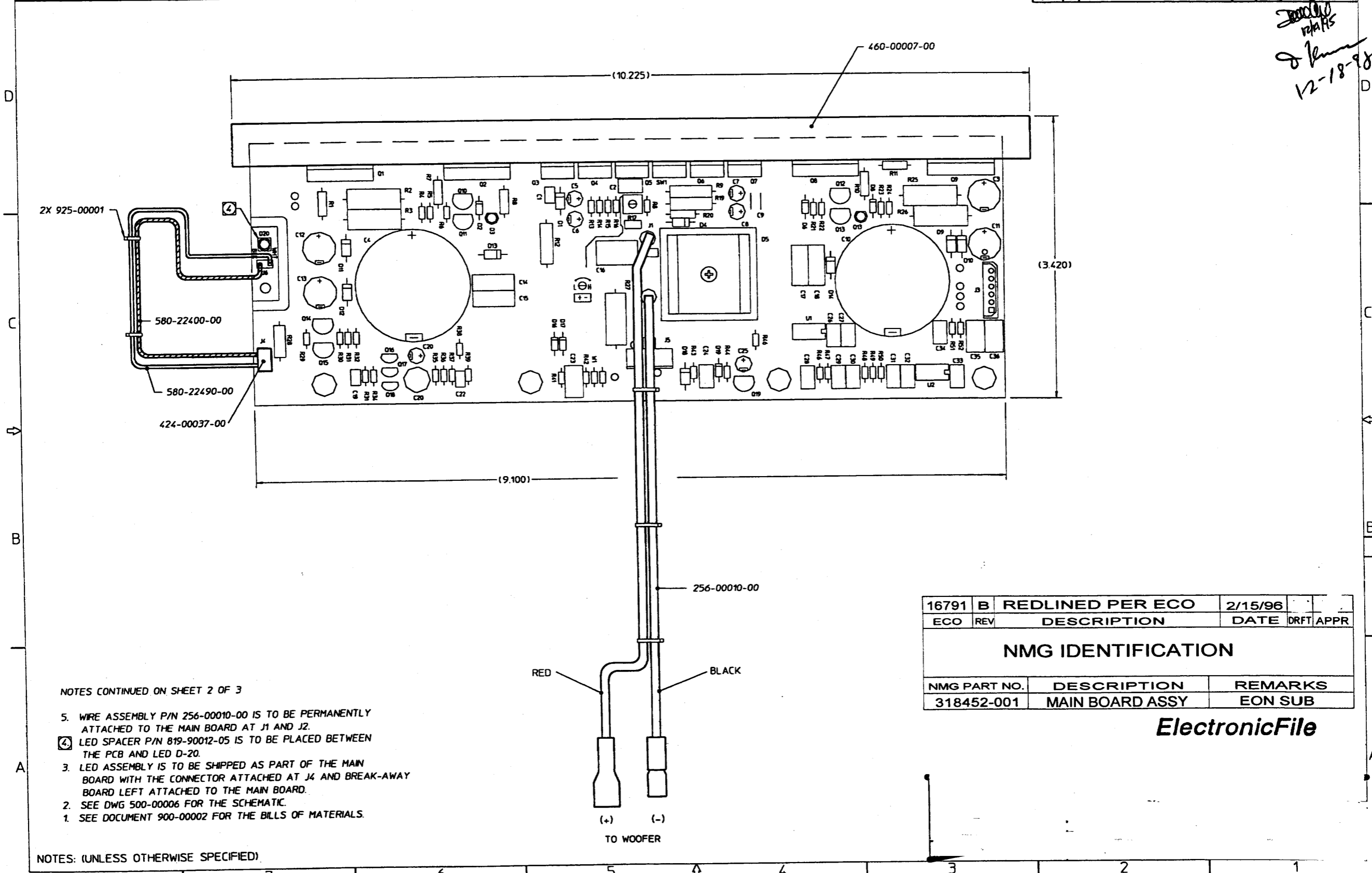


THESE DRAWINGS AND SPECIFICATIONS ARE THE PROPERTY OF JBL. IN WHOLE OR IN PART, THEY ARE ISSUED IN STRICT CONFIDENCE AND SHALL NOT BE REPRODUCED, COPIED, OR USED AS THE BASIS FOR MANUFACTURING OR SALE OF APPARATUS WITHOUT WRITTEN PERMISSION.

PART NO	REV	DESCRIPTION
513-00003-00	E	SUBWOOFER MAIN BOARD

REVISIONS						
CHG	LTR	DESCRIPTION	DRFT	CHK	DATE	APPR
---	A	RELEASE FOR PROD & ADDED LED	YUKI	MV	5/22/95	---
193	B	REMOVE CABLE ASST 254-00001, MOVE NOTE 6 TO SHEET 2	YUKI	MV	6/12/95	---
297	D	ADDED C19	YUKI	MV	9/7/95	DK
364	E	ADDED C101	YUKI			

YUKI
12-18-98



NOTES CONTINUED ON SHEET 2 OF 3

5. WIRE ASSEMBLY P/N 256-00010-00 IS TO BE PERMANENTLY ATTACHED TO THE MAIN BOARD AT J1 AND J2.
- ④ LED SPACER P/N 819-90012-05 IS TO BE PLACED BETWEEN THE PCB AND LED D-20.
3. LED ASSEMBLY IS TO BE SHIPPED AS PART OF THE MAIN BOARD WITH THE CONNECTOR ATTACHED AT J4 AND BREAK-AWAY BOARD LEFT ATTACHED TO THE MAIN BOARD.
2. SEE DWG 500-00006 FOR THE SCHEMATIC.
1. SEE DOCUMENT 900-00002 FOR THE BILLS OF MATERIALS.

NOTES: (UNLESS OTHERWISE SPECIFIED)

16791	B	REDLINED PER ECO	2/15/96		
ECO	REV	DESCRIPTION	DATE	DRFT	APPR

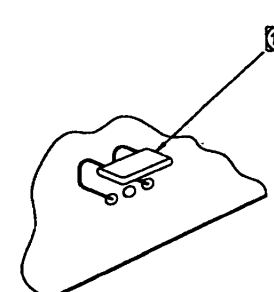
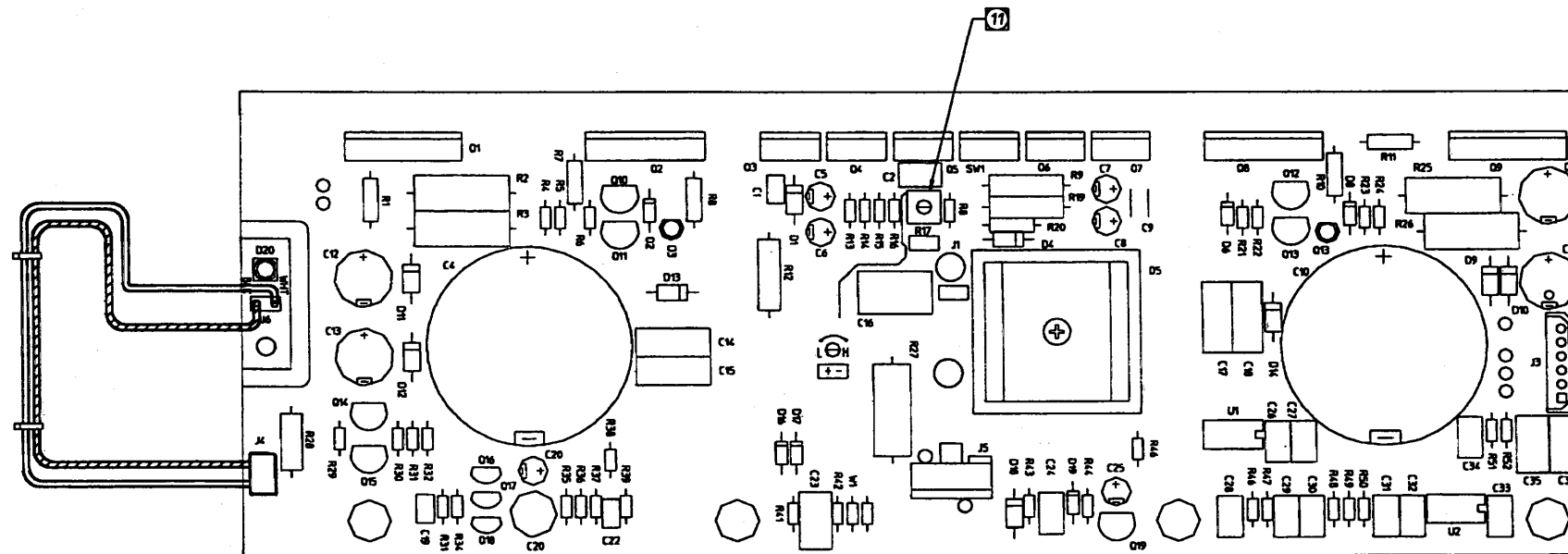
NMG IDENTIFICATION

NMG PART NO.	DESCRIPTION	REMARKS
318452-001	MAIN BOARD ASSY	EON SUB

ElectronicFile

THESE DRAWINGS AND SPECIFICATIONS ARE THE PROPERTY OF JBL. UNLESS OTHERWISE SPECIFIED THEY ARE ISSUED IN STRICT CONFIDENCE AND SHALL NOT BE REPRODUCED, COPIED, OR USED AS THE BASIS FOR MANUFACTURING OR SALE OF APPARATUS WITHOUT WRITTEN PERMISSION.

REVISIONS				
CHG	LTR	DESCRIPTION	DRFT	CHK DATE APPR
SEE SHEET 1 OF 3				



607-20104-05

12 PRE-TIN COMPONENT(101) PRIOR TO INSTALLATION. APPLY ~~307-20104-05~~ AS SHOWN SOLDER CONNECTION TO J5 PIN1 AND PIN 3 ON TRACE SIDE.

11 USE 0.00005 GRAMS OF LOCKTITE 425, JBL PRO P/N 910-00004-00, OR EQUIVALENT ON R17 AFTER ADJUSTING BIAS SO BIAS WILL NOT DRIFT WITH VIBRATION.

NOTES: (UNLESS OTHERWISE SPECIFIED)

ECO	REV	DESCRIPTION	DATE	DRFT	APPR
NMG IDENTIFICATION					
NMG PART NO.	DESCRIPTION	REMARKS			
318452-001	MAIN BOARD ASSY	EON SUB			

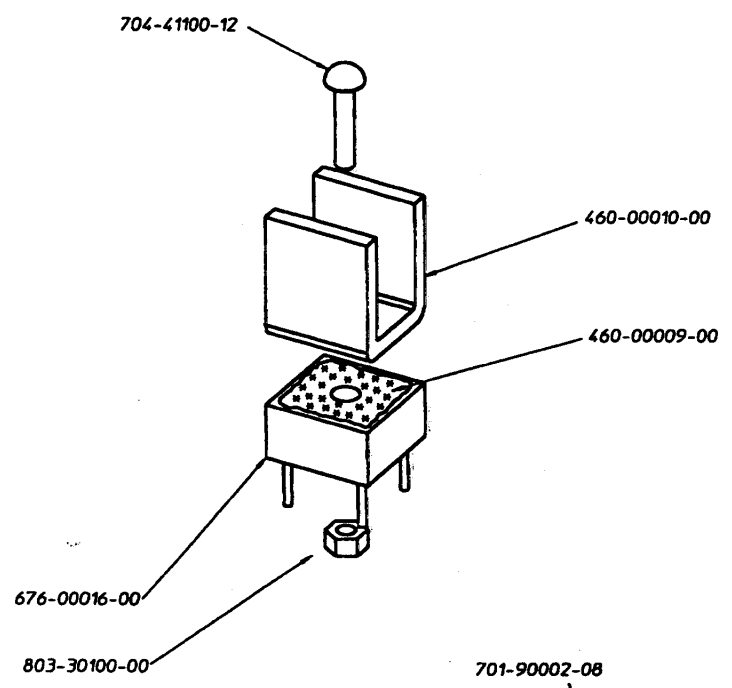
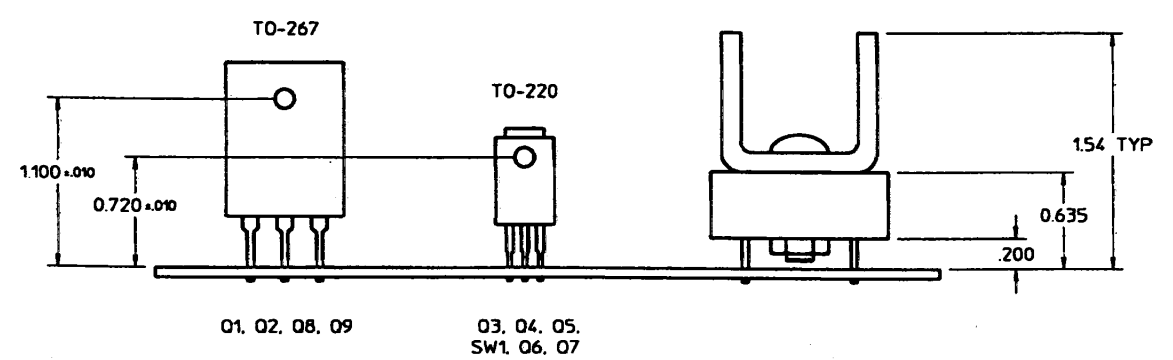
ElectronicFile

SIZE	D	DRAWING NO.	513-00003	REV	E
SCALE	2 / 1	SHEET	OF		

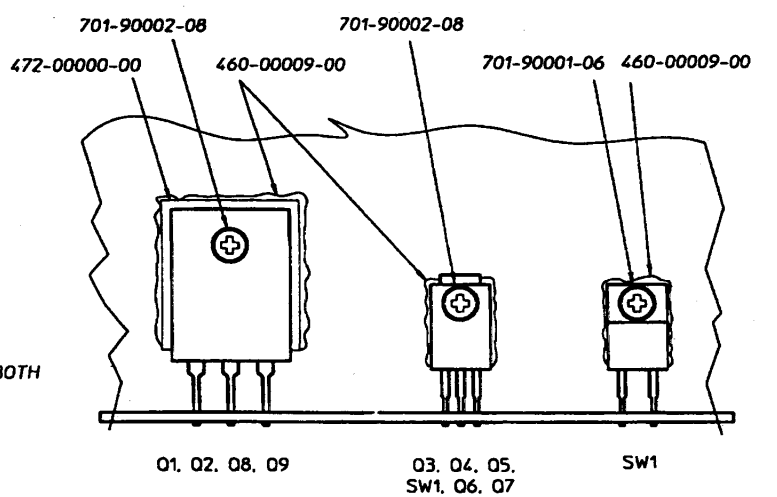
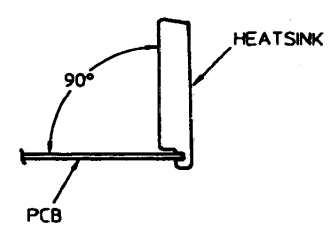
THESE DRAWINGS AND SPECIFICATIONS ARE THE PROPERTY OF JBL. IF REPRODUCED THEY ARE ISSUED IN STRICT CONFIDENCE AND SHALL NOT BE REPRODUCED, COPIED, OR USED AS THE BASIS FOR MANUFACTURING OR SALE OF APPARATUS WITHOUT WRITTEN PERMISSION.

REVISIONS						
CHG	LTR	DESCRIPTION	DRFT	CHK	DATE	APPR
SEE SHEET 1 OF 3						

MOUNTING HEIGHT FROM TOP SURFACE OF THE PCB

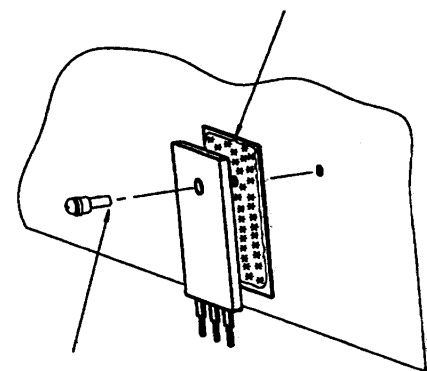
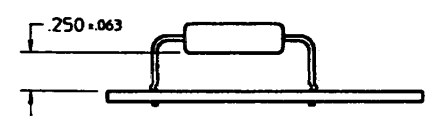


MOUNTING ANGLE OF THE PCB ASSY TO THE HEATSINK



PAINT THERMAL COMPOUND 460-00009-00 ON BOTH SIDES OF MICA INSULATOR 472-00000-00

**MOUNTING HEIGHT FROM TOP SURFACE OF THE PCB
R2,R3,R25,R26,R27**

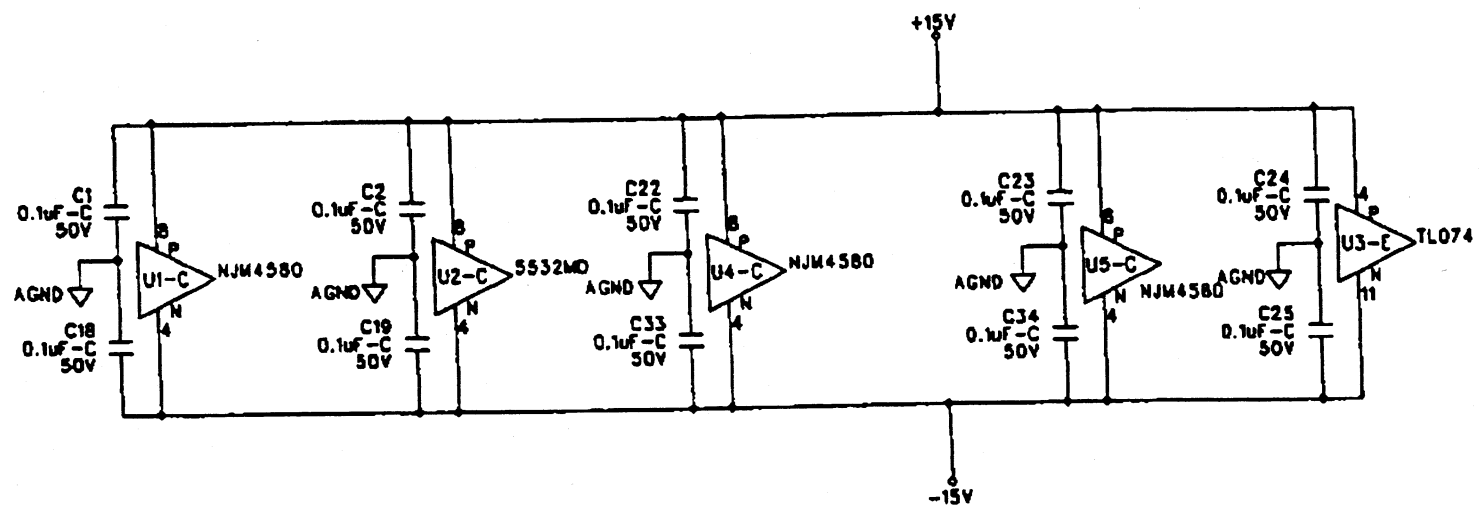


USE 0.00027 GRAM OF LOCKTITE 222 JBL P/N 910-00003-00 OR EQUIVALENT FOR EACH SCREW.

ECO	REV	DESCRIPTION	DATE	DRFT	APPR
NMG IDENTIFICATION					
NMG PART NO.	DESCRIPTION	REMARKS			
318452-001	MAIN BOARD ASSY	EON SUB			

NOTES: (UNLESS OTHERWISE SPECIFIED)

SIZE	D	DRAWING NO.	513-00003	REV	E
SCALE	2 / 1	SHEET	OF		



A3 BRKOFF
A2 FIDUCIAL
A1 FIDUCIAL

MPI
MP300H156

MH2 MH156-TOOL
MH1 MH156-TOOL

PCB1
50-6391

AO	Release to Production	XXXX	MRC	10/27/00
REV	DESCRIPTION	ECN #	INT	DATE

REVISION HISTORY

JBL Professional
8760 South Sandy Parkway Sandy Utah 84070

TITLE: EON10 GH SIGNAL INPUT PCBA

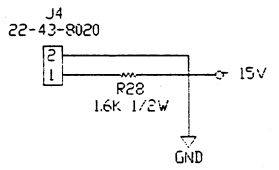
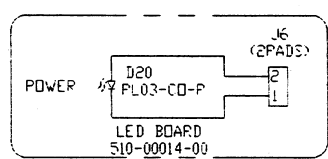
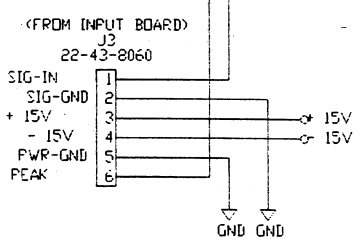
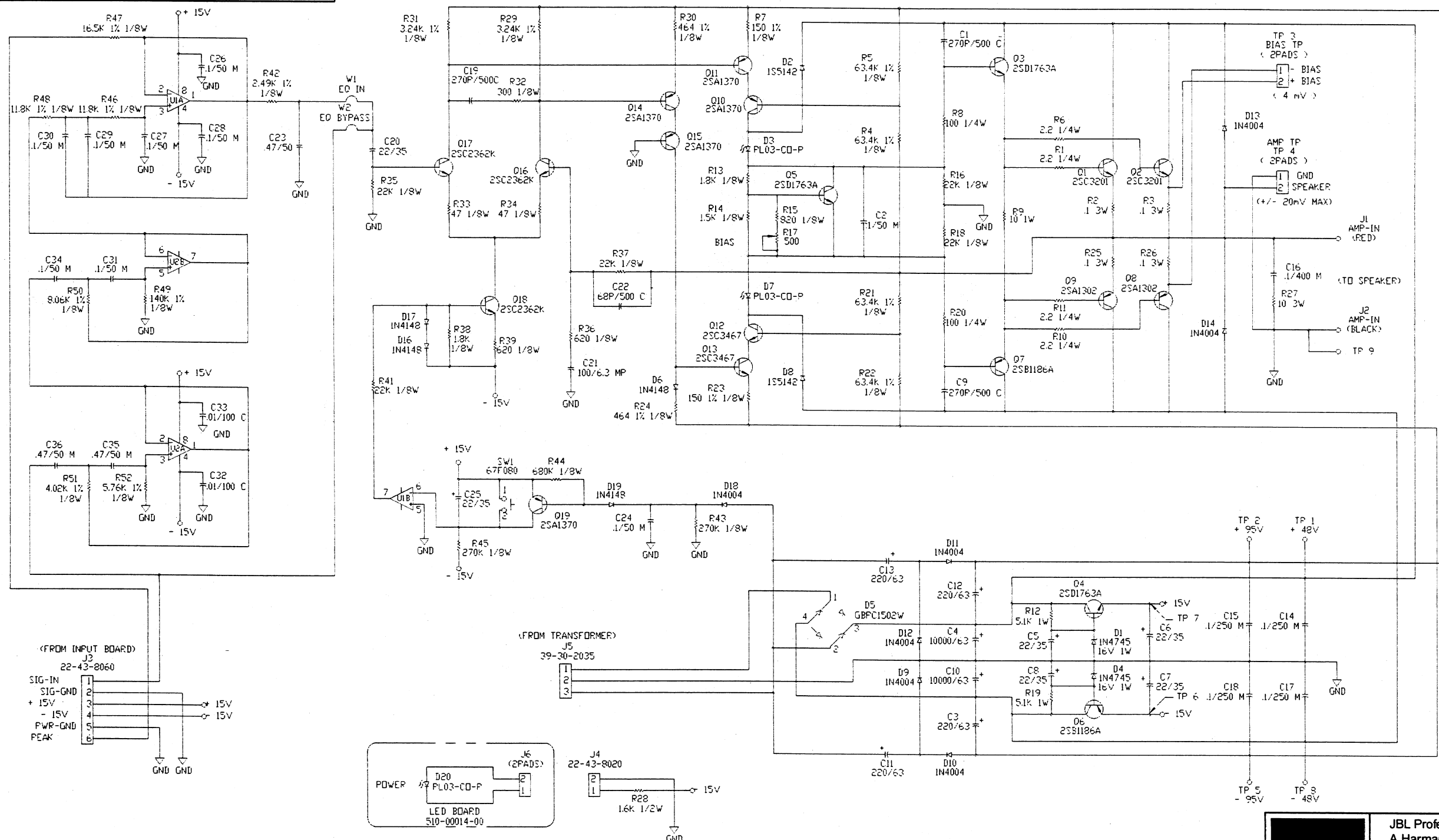
DESIGNER: Mark Corbridge ENGINEER: John C. Elliot

SIZE: A DRAWING NO: 05-6391 REVISION AO

DATE: 10/27/00 FILENAME: 056391A0.SCH SHEET: 1 OF 1

Schematic Amp Assembly EON PowerSub

These Drawings and Specifications are the Property of JBL Professional Inc. They are Issued in Strict Confidence and Shall Not Be Reproduced, Copied, or Used as the Basis for Manufacturing or Sale of Apparatus Without Written Permission.



	JBL Professional A Harman International Company Northridge, California 91329, USA	
	SCHEMATIC, MAIN BOARD	
	500-00006	REV F