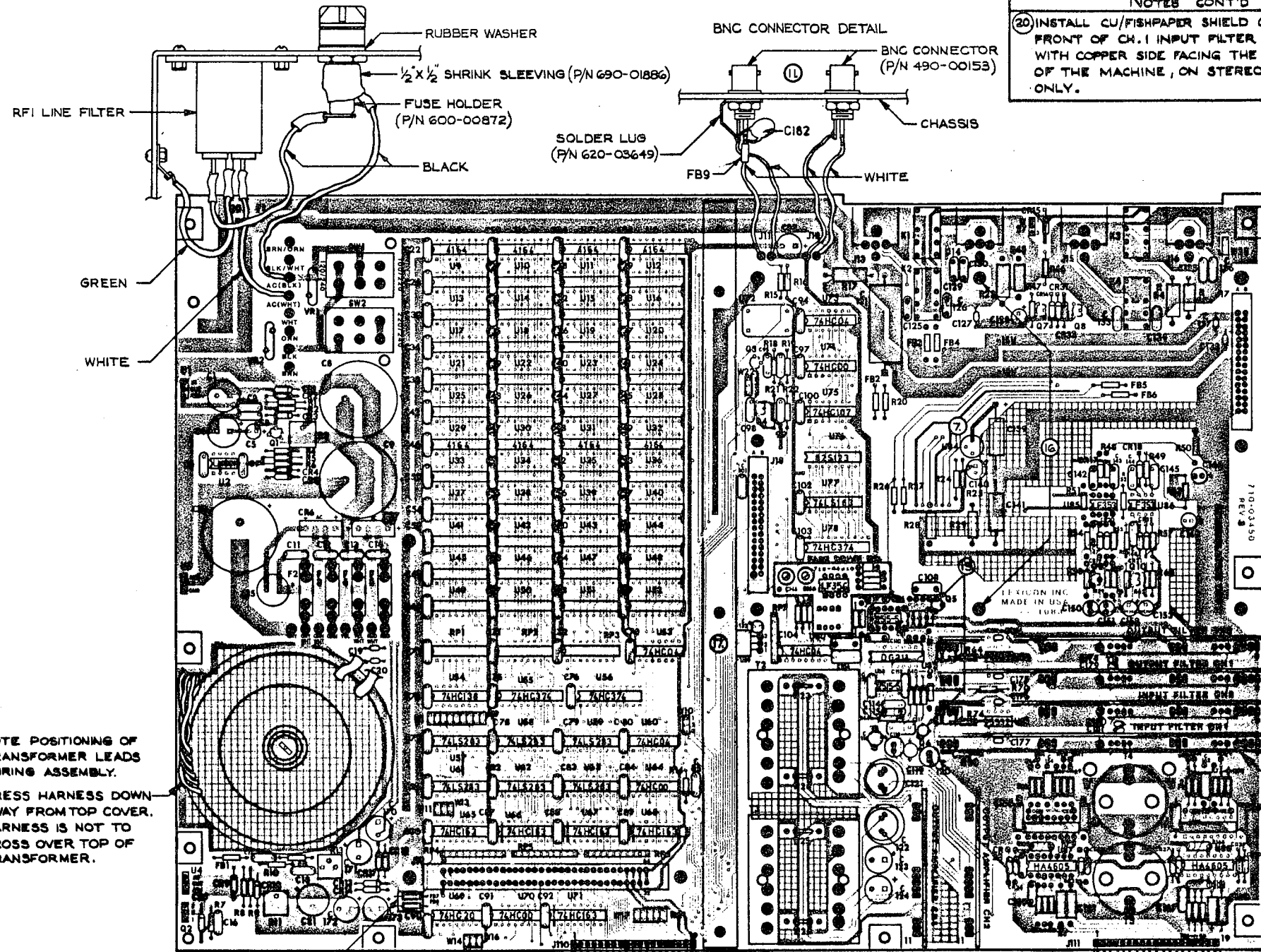


6 SCHEMATICS AND ASSEMBLY DRAWINGS

The following schematics and assembly drawings are contained in this section in the order listed below:

<u>Title</u>	<u>Lexicon Drawing No.</u>
Main Board schematic	060-03644-D
Main Board assembly	080-03455-D
Converter Board schematic	060-03752-D
Converter Board assembly	080-03758-C
Output Amplifier Module schematic	060-03648-C
Output Amplifier Module assembly	080-03479-B
Filter Board schematic	060-03745-D
Filter Board assembly	080-03750-B
Front Panel Board schematic	060-03647-D
Front Panel Board assembly	080-03467-C

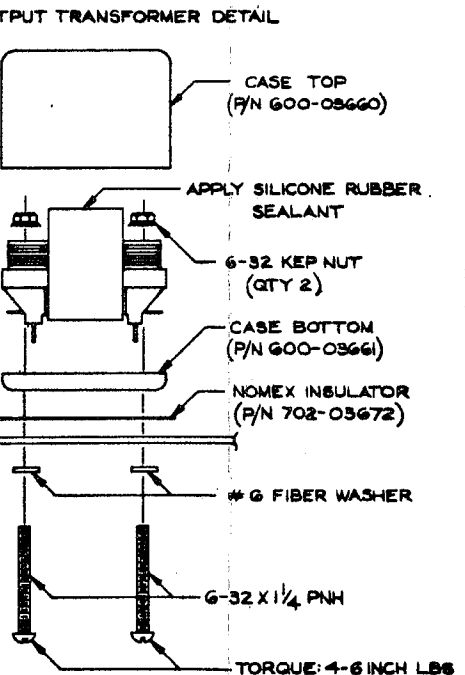
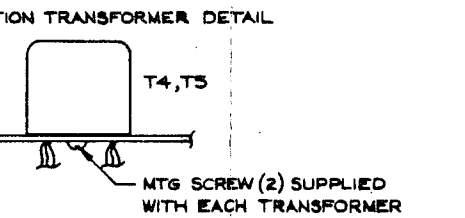
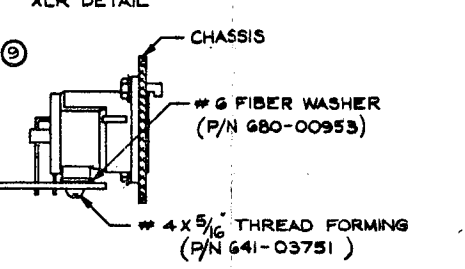


NOTES CONT'D

(20) INSTALL CU/FISHPAPER SHIELD ON FRONT OF CH.1 INPUT FILTER BOARD, WITH COPPER SIDE FACING THE FRONT OF THE MACHINE, ON STEREO UNITS ONLY.

REVISIONS			
REV	DESCRIPTION	DATE	APPV'D
5	REVISED TO POSITION FADE DRIVE BD, Q5 & Q6 AS PER ECO #840607-00	6-19-84	6-29-84 B RS 9/26/84 DPA
6	REVISED TO ADD NOTE 20 PER ECO #840720-00	7-25-84	A 7-26-84 RS

REVISIONS			
REV	DESCRIPTION	DATE	APPROVED
0	PRODUCTION RELEASE	7/7/83	
1	REVISED PER ECO NO. B9123-00.	12/15/83	JCR
2	REVISED PER ECO NO. B3103-00.	4/30/83	JCR
3	ADDED NOTE 18, STEREO RELEASE.	2/11/84	JCR
4	CHANGED BNC DETAIL PER ECO NO. B4039-00.	3/21/84	JCR



- NOTES**
- FOR MONO UNITS REFER TO BOM NO. 025-05600 AND 024-03599.
 - FOR STEREO UNITS REFER TO BOM NO. 025-03507 AND 024-03506.
 - SOLDER TAIL PROTRUSION .080" MAXIMUM.
 - SOLDER MASK HOLES ARE INDICATED BY SOLID PADS. PADS OF COMPONENTS NOT INSTALLED IN MONO UNITS ARE TO BE MASKED TO FACILITATE FUTURE CONVERSION TO STEREO IF NECESSARY.
 - SOCKET ALL IC POSITIONS EXCEPT U1, U3, U4, U7, U8, U9, RPI-RP3, RP8-9, AND Q2.
 - FLEX CONNECTORS J10 AND J11 ARE TO BE INSERTED FROM CIRCUIT SIDE AND SOLDERED FROM COMPONENT SIDE.
 - INSULATION SPACER (P/N 680-01894) TO BE PLACED UNDER U84. INSTALL U84 WITH TAB IN POSITION SHOWN.
 - POWER TRANSFORMER (T1) TO BE SECURED TO PCB WITH HARDWARE SHOWN.
 - XLR INSTALLATION (J13-J16)
 - SECURE XLR CONNECTOR WITH SHELL TO PCB WITH #4 SCREW THEN SOLDER CONNECTOR TO BE MOUNTED ON THE INSIDE OF THE CHASSIS AS SHOWN.
 - OUTPUT TRANSFORMER INSTALLATION (T2, T3)
 - POSITION NOMEX INSULATOR AND CASE BOTTOM BETWEEN TRANSFORMER AND PCB AS SHOWN.
 - MOUNT TRANSFORMER WITH #6 HARDWARE AS SHOWN, TIGHTEN AND SOLDER LEADS. USE 242 LOCTITE ON NUTS.
 - APPLY A DAB OF SILICONE RUBBER TO THE TOP OF THE TRANSFORMER AND PRESS CASE TOP FLUSH TO TRANSFORMER.
 - HAND SOLDER BNC CONNECTORS J11 AND J12 TO MAIN BOARD AS SHOWN. 1 CAPACITOR (C182) AND 1 FERRITE BEAD (FB9) ARE TO BE SOLDERED BETWEEN THE CONNECTOR LEADS AND WIRES (P/N 675-02884) AS SHOWN.
 - U5-U8 ARE DRAM, 4164, 64K X 1.
 - JUMPER INSTALLATION

MONO SYSTEM:

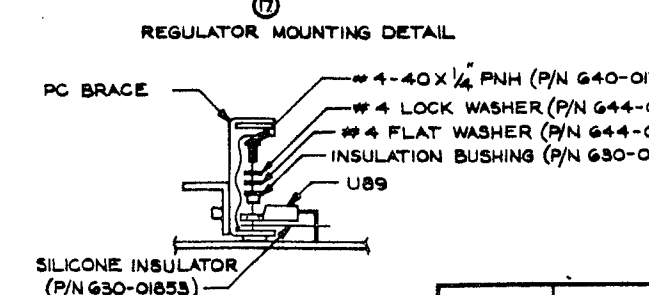
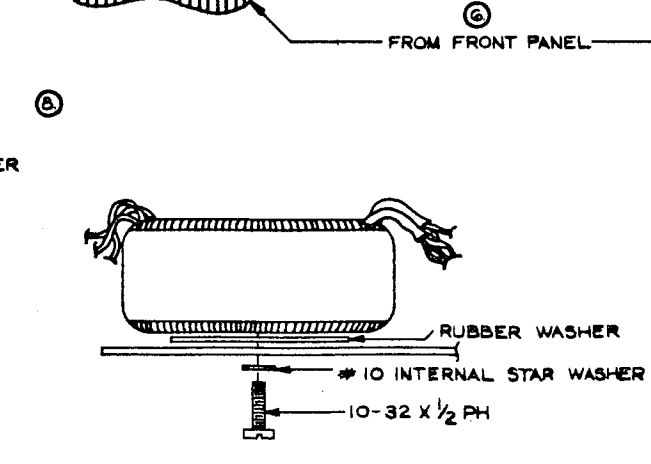
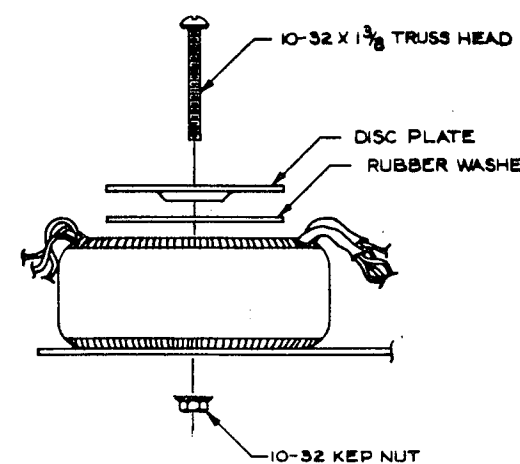
48 KHz - W8 (1-2), W8, W20, W22 (2-3)
 96 KHz - W10 (1-2), W8, W20, W22 (1-2)
MONO OR 2 OUT OPTION: W10 (2-3), W17, W19, W21, W22 (1-2)

STEREO SYSTEM: W10 (1-2), W4, W8, W20, W22 (1-2)

MEMORY OPTIONS:

BANK	JUMPER
1	W8, W9, W9
2	W8, W5, W9, W11, W15
4	W2, W5, W9, W11, W12, W16
6	W2, W8, W9, W11, W15, W15, W16
 - APPLY A DAB OF SILICONE ADHESIVE TO FB1-FB6.
 - PLACE A PIECE OF KAPTON TAPE UNDER FB7 AND FB8.
 - CENTER STANDOFFS FOR CONVERTER BOARD ARE NOT TO BE INSTALLED.
 - U89 IS TO BE INSTALLED WITH HARDWARE SHOWN.
 - INSTALL W25-W26 ONLY WHEN T2 AND T3 ARE NOT INSTALLED.
 - NOTE TAB POSITION.

NOTE POSITIONING OF TRANSFORMER LEADS DURING ASSEMBLY. DRESS HARNESS DOWN AWAY FROM TOP COVER. HARNESS IS NOT TO CROSS OVER TOP OF TRANSFORMER.



QTY	CODE	PART OR IDENTIFYING NO	NOMENCLATURE OR DESCRIPTION	MATERIAL SPECIFICATION
UNLESS OTHERWISE SPECIFIED DIMENSIONS ARE IN INCHES. TOLERANCES ARE: FRACTIONS DECIMALS ANGLES .XX .XXX .XXX				
MATERIAL		CONTRACT NO.		
FINISH		APPROVALS		
NEXT ASSY USED ON		DATE		
APPLICATION		CHECKED		
DO NOT SCALE DRAWING		ISSUED		
		SCALE FULL		
		SHEET 1 OF 1		

lexicon

PC ASSEMBLY DRAWING
MAIN BOARD, M1300

080-03455

4

3

2

1

D

C

B

A

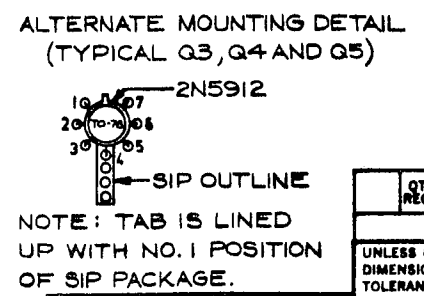
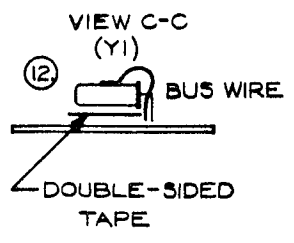
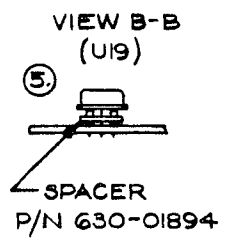
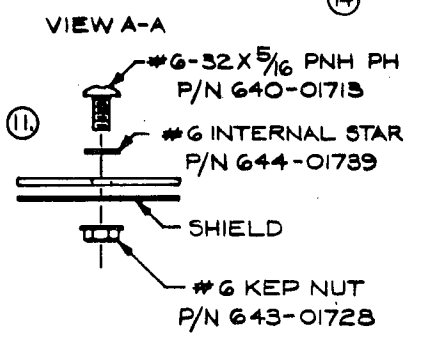
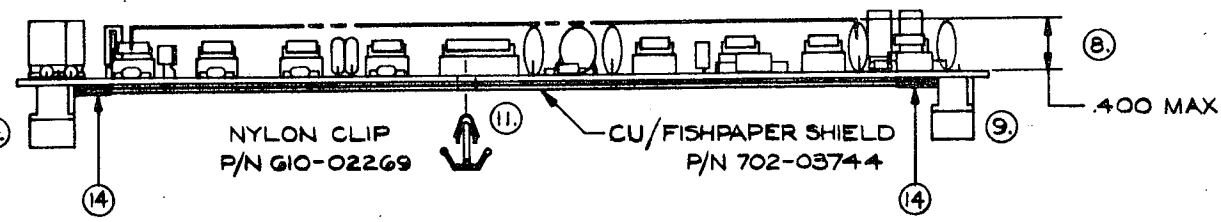
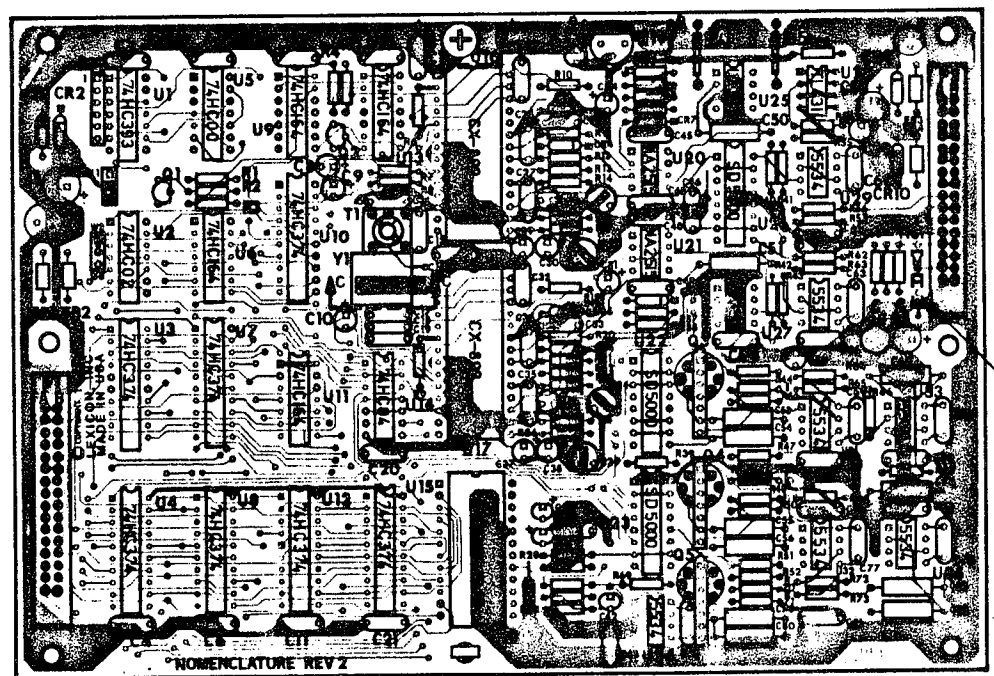
D

C

B

B

A



REVISIONS			
REV.	DESCRIPTION	DATE	APPROVED
0	RELEASE FOR PRODUCTION	3/29/84 JCR	<i>[Signature]</i> RG 3/26/84
1	ADD NOTE 14 & 15 AS PER ECO # 840511-00	5-14-84 JB	RS 5-17-84 JAN 17 MAY 84 RG 5/24/84

- NOTES
- FOR MONO UNITS REFER TO BOM NO. 024-03980 AND 025-03981. FOR STEREO UNITS REFER TO BOM NO. 024-03591 AND 025-03592.
 - DRAWING REFLECTS A STEREO UNIT.
 - MASKING FOR POST SOLDER ASSEMBLY IS INDICATED BY SOLID CIRCLES.
 - SOCKET ALL IC POSITIONS EXCEPT U19 AND U28.
 - INSTALL AN INSULATION SPACER UNDER U19 BEFORE SOLDERING.
 - JUMPER INSTALLATION:
MONO UNITS WI 2-3, W3, W4 AND W5
STEREO UNITS WI 2-3, W2, W4 AND W5
 - INSTALL R61 IN POSITION "S" AS SHOWN. FOR MONO UNITS INSTALL IN POSITION "M".
 - COMPONENT HEIGHT .400" MAXIMUM WHERE INDICATED.
 - INSERT P1 AND P2 FROM CIRCUIT SIDE AND SOLDER FROM COMPONENT SIDE OF PCB. NOTE ORIENTATION.
 - OBSERVE STATIC PRECAUTIONS.
 - INSTALL FISHPAPER SHIELD WITH COPPER CLAD SIDE AWAY FROM PCB. SECURE SHIELD TO BOARD WITH #6 HARDWARE AT TOP HOLE AND NYLON CLIP AT BOTTOM HOLE AS SHOWN.
 - USE DOUBLE-SIDED FOAM TAPE TO AFIX CRYSTAL TO PCB. SOLDER 24ga BUS WIRE FROM GROUND (PAD BETWEEN CRYSTAL LEADS) TO CASE OF CRYSTAL AS SHOWN.
 - LEAD PROTRUSION .080" MAXIMUM FROM CIRCUIT SIDE OF PCB.
 - ADD 2 - 5.5" PIECES OF KAPTON TAPE TO ENDS OF SHIELD.
 - APPLY RTV TO ALL FERRITE BEADS.

QTY REQD	CODE IDENT	PART OR IDENTIFYING NO	NOMENCLATURE OR DESCRIPTION	MATERIAL SPECIFICATION
PARTS LIST				
UNLESS OTHERWISE SPECIFIED DIMENSIONS ARE IN INCHES TOLERANCES ARE: FRACTIONS DECIMALS ANGLES XXX .XXX .XXX			lexicon	
CONTRACT NO.		PC ASSEMBLY DRAWING STEREO CONVERTER, M1300S		
APPROVALS		DATE		
DRAWN JCR		3/29/84		
CHECKED RS		3/23/84		
ISSUED <i>[Signature]</i>		3/24/84		
MATERIAL		SIZE FCBM NO. DWG. NO. 080-03758 REV. 1		
FINISH		SCALE FULL SHEET 1 QF 1		
NEXT ASSY USED ON		DO NOT SCALE DRAWING		
APPLICATION				

4

3

2

1

D

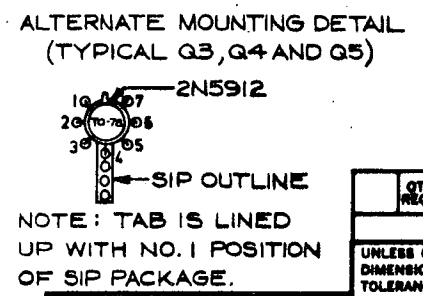
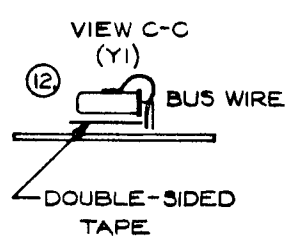
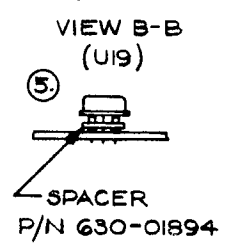
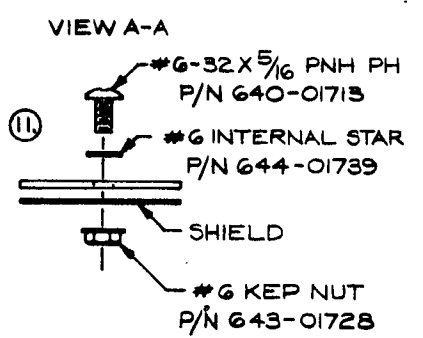
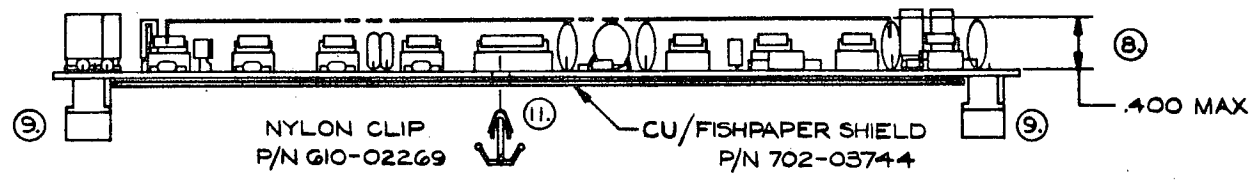
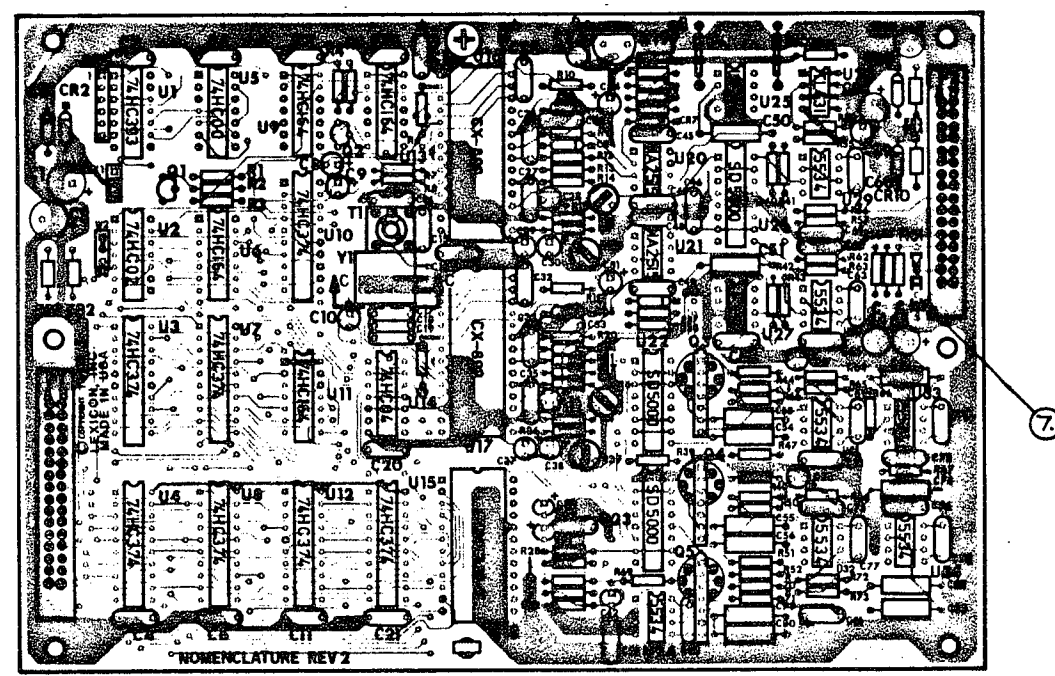
C

B

A

REVISIONS			
REV.	DESCRIPTION	DATE	APPROVED
0	RELEASE FOR PRODUCTION	3/29/84 JCR	<i>[Signature]</i> Rcy 3/29/84

- NOTES
- FOR MONO UNITS REFER TO BOM NO. 024-03980 AND 025-03981, FOR STEREO UNITS REFER TO BOM NO. 024-03591 AND 025-03592.
 - DRAWING REFLECTS A STEREO UNIT.
 - MASKING FOR POST SOLDER ASSEMBLY IS INDICATED BY SOLID CIRCLES.
 - SOCKET ALL IC POSITIONS EXCEPT U19 AND U28.
 - INSTALL AN INSULATION SPACER UNDER U19 BEFORE SOLDERING.
 - JUMPER INSTALLATION:
 MONO UNITS W1 2-3, W3, W4 AND W5
 STEREO UNITS W1 2-3, W2, W4 AND W5
 - INSTALL R61 IN POSITION "S" AS SHOWN. FOR MONO UNITS INSTALL IN POSITION "M".
 - COMPONENT HEIGHT .400" MAXIMUM WHERE INDICATED.
 - INSERT P1 AND P2 FROM CIRCUIT SIDE AND SOLDER FROM COMPONENT SIDE OF PCB. NOTE ORIENTATION.
 - OBSERVE STATIC PRECAUTIONS.
 - INSTALL FISHPAPER SHIELD WITH COPPER CLAD SIDE AWAY FROM PCB. SECURE SHIELD TO BOARD WITH #6 HARDWARE AT TOP HOLE AND NYLON CLIP AT BOTTOM HOLE AS SHOWN.
 - USE DOUBLE-SIDED FOAM TAPE TO AFIX CRYSTAL TO PCB. SOLDER 24ga BUS WIRE FROM GROUND (PAD BETWEEN CRYSTAL LEADS) TO CASE OF CRYSTAL AS SHOWN.
 - LEAD PROTRUSION .080" MAXIMUM FROM CIRCUIT SIDE OF PCB.



QTY REQD	CODE IDENT	PART OR IDENTIFYING NO	NOMENCLATURE OR DESCRIPTION	MATERIAL SPECIFICATION
PARTS LIST				
UNLESS OTHERWISE SPECIFIED DIMENSIONS ARE IN INCHES TOLERANCES ARE: FRACTIONS DECIMALS ANGLES .XX .XXX .XXX			lexicon	
CONTRACT NO.		PC ASSEMBLY DRAWING STEREO CONVERTER, M1300/S		
APPROVALS	DATE	DRAWN JCR 3/21/84		
CHECKED RS	3/23/84	ISSUED RMB 3/24/84		
MATERIAL	FINISH	SIZE FROM NO.	DWG. NO.	REV.
MIS00/S		C	080-03758	0
NEXT ASSY	USED ON	SCALE FULL	SHEET 1 OF 1	
APPLICATION	DO NOT SCALE DRAWING			

4

3

2

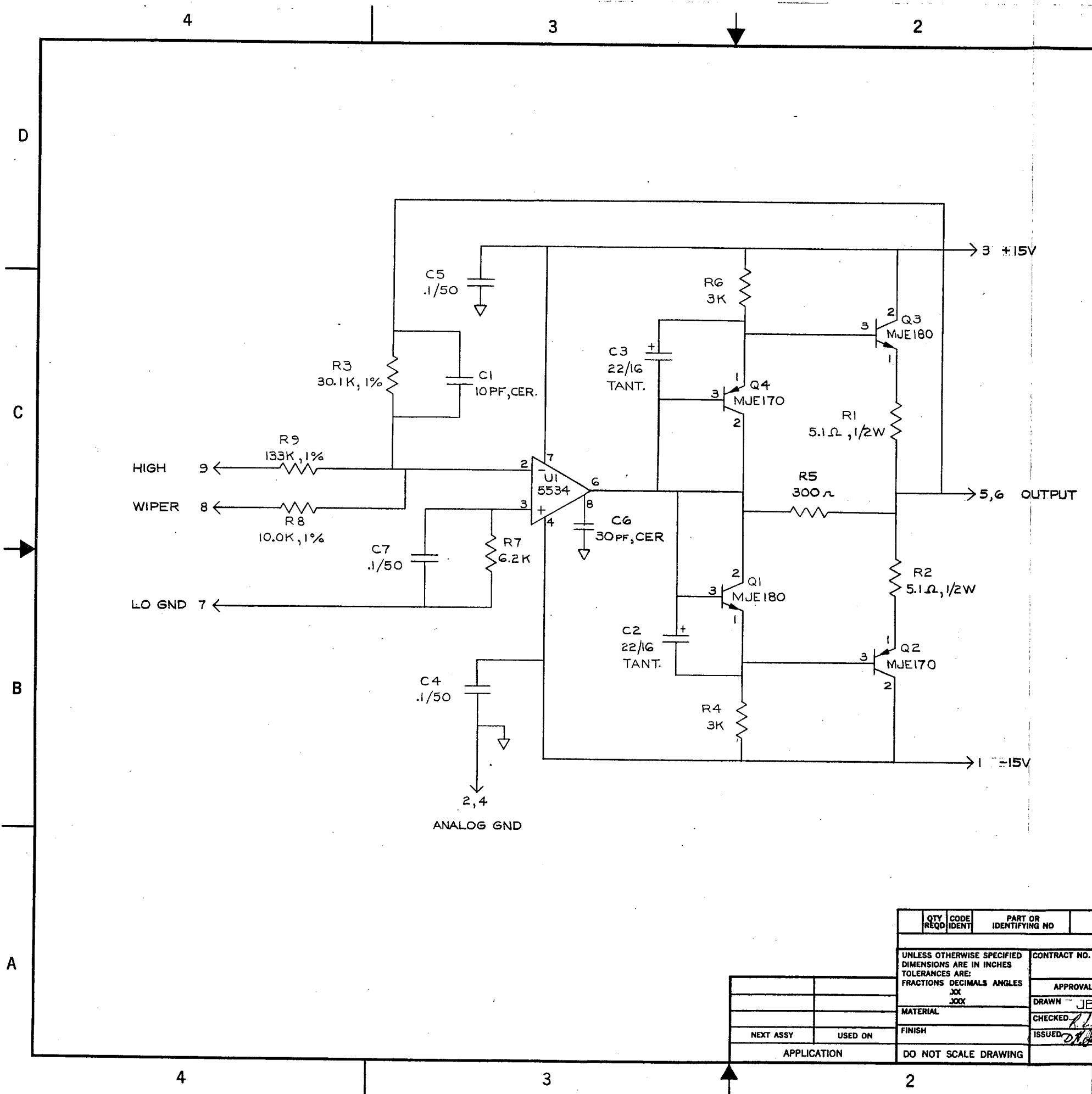
1

D

C

B

A



REVISIONS			
REV.	DESCRIPTION	DATE	APPROVED
0	RELEASE FOR PRODUCTION	5-18-83 JB	CB 7/7/83
1	REVISED PER ECO NO. 631103-00	4/3/83 JCR	DH 15/2/83 RG 11-17-83

- NOTES
- UNLESS OTHERWISE INDICATED, RESISTORS ARE 5%, 1/4 W.
 - UNLESS OTHERWISE INDICATED, CAPACITORS ARE UF/V.
 - | | | |
|-----------------|------------------|------------------|
| ↓ ANALOG GROUND | ⏏ DIGITAL GROUND | ⏏ CHASSIS GROUND |
|-----------------|------------------|------------------|
 - | | |
|-------------------|-------------------------|
| ← PLUG CONNECTION | → RECEPTACLE CONNECTION |
|-------------------|-------------------------|
 - | | |
|--------------------------|----------------------------|
| → ON BOARD CONNECTION-TO | ← ON BOARD CONNECTION-FROM |
|--------------------------|----------------------------|

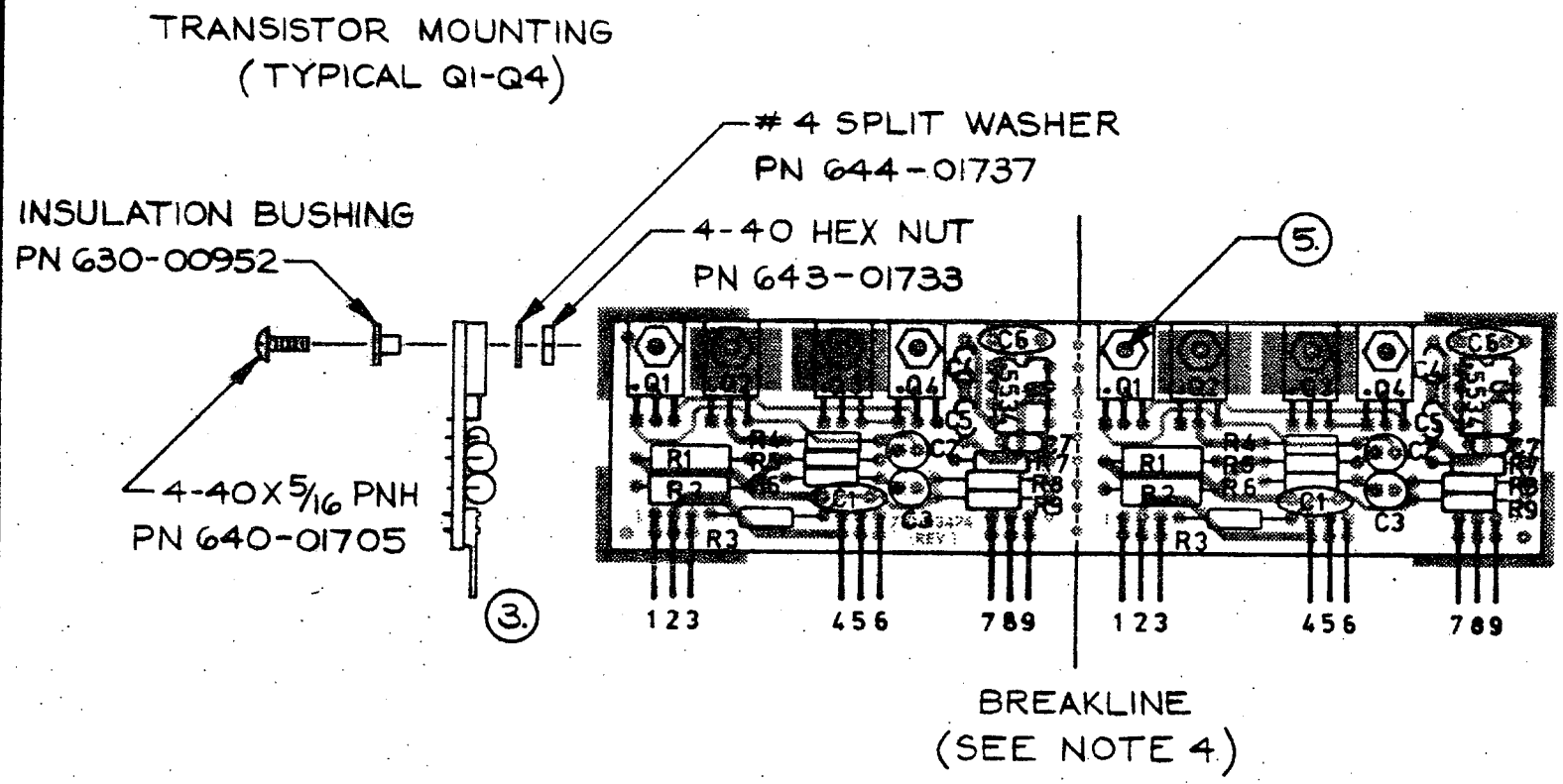
QTY REQD	CODE IDENT	PART OR IDENTIFYING NO	NOMENCLATURE OR DESCRIPTION	MATERIAL SPECIFICATION
PARTS LIST				
UNLESS OTHERWISE SPECIFIED DIMENSIONS ARE IN INCHES TOLERANCES ARE: FRACTIONS DECIMALS ANGLES XXX .XXX		CONTRACT NO.		
MATERIAL		APPROVALS	DATE	lexicon
FINISH		DRAWN JB	5-18-83	
NEXT ASSY	USED ON	CHECKED <i>[Signature]</i>	5-25-83	SCHEMATIC, OUTPUT AMPLIFIER BOARD; MI300
APPLICATION		ISSUED <i>[Signature]</i>	7-7-83	
DO NOT SCALE DRAWING		SIZE C	FSCM NO.	DWG. NO. 060-03648
		SCALE NA	SHEET 1 OF 1	

REVISIONS

REV.	DESCRIPTION	DATE	APPROVED
1	REVISED PER ECO NO. 831103-00.	12/0/83 JCR	12 DEC 83 JCR

NOTES

- REFER TO BOM NO. 023-03515.
- REFER TO SCHEMATIC NO. 060-03648.
- F POST CONNECTORS ARE INSTALLED FROM COMPONENT SIDE.
- BOARD CONTAINS 2 OUTPUT AMPLIFIERS BREAK IN HALF ON DOTTED LINE IF REQUIRED.
- APPLY A DAB OF LOCTITE # 242 TO THREADS OF SCREWS ON ALL TRANSISTORS (Q1-Q4).



QTY REQD	CODE IDENT	PART OR IDENTIFYING NO	NOMENCLATURE OR DESCRIPTION	MATERIAL SPECIFICATION
PARTS LIST				
UNLESS OTHERWISE SPECIFIED DIMENSIONS ARE IN INCHES TOLERANCES ARE: FRACTIONS DECIMALS ANGLES XXX .XXX			CONTRACT NO.	
MATERIAL			APPROVALS	DATE
FINISH			DRAWN JCR	12-7-83
NEXT ASSY			CHECKED M.A.H.	12-12-83
USED ON			ISSUED RG	12-17-83
APPLICATION			SCALE FULL	
DO NOT SCALE DRAWING			SHEET 1 OF 1	

Indcon

PC ASSEMBLY DRAWING
OUTPUT AMPLIFIER BOARD, M1300

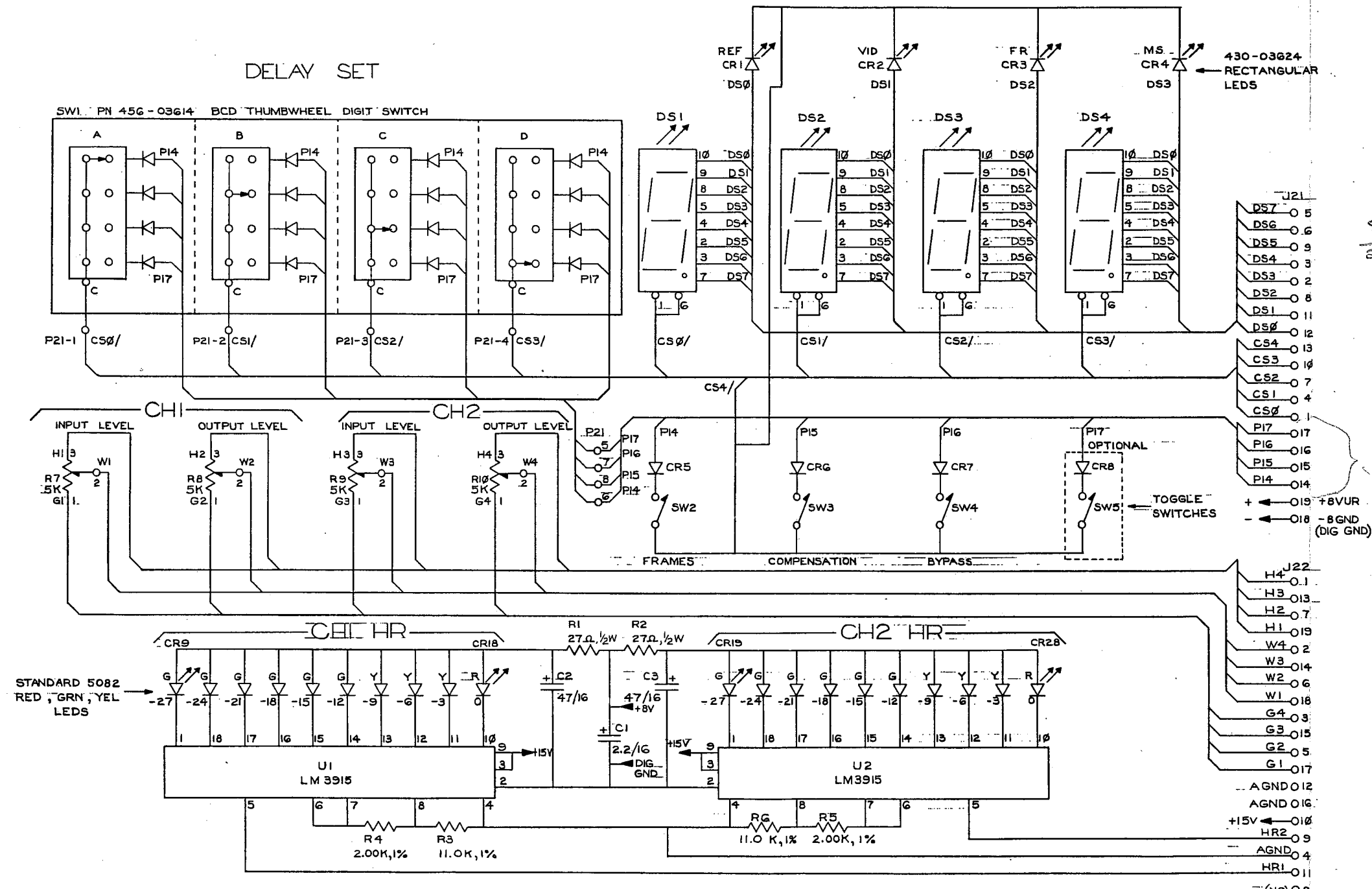
SIZE B FSCM NO. DWG. NO. 080-03479 REV. 1

8 7 6 5 4 3 2 1

REVISIONS			
REV.	DESCRIPTION	DATE	APPROVED
0	RELEASE FOR PRODUCTION	6-14-83 JB	CS 7/13

DELAY DISPLAY

DELAY SET



- 430-03624
RECTANGULAR
LEDS
- STANDARD 5082
RED, GRN, YEL
LEDS
- J21
 - DS7 0 5
 - DS6 0 6
 - DS5 0 9
 - DS4 0 3
 - DS3 0 2
 - DS2 0 8
 - DS1 0 11
 - DS0 0 12
 - CS4 0 13
 - CS3 0 10
 - CS2 0 7
 - CS1 0 4
 - CS0 0 1
 - PI7 0 17
 - PI6 0 16
 - PI5 0 15
 - PI4 0 14
 - + 0 19 +8VUR
 - 0 18 -8GND (DIG GND)
 - H4 J22 0 1
 - H3 0 13
 - H2 0 7
 - H1 0 19
 - W4 0 2
 - W3 0 14
 - W2 0 6
 - W1 0 18
 - G4 0 3
 - G3 0 15
 - G2 0 5
 - G1 0 17
 - AGND 0 12
 - AGND 0 16
 - +15V 0 10
 - HR2 0 9
 - AGND 0 4
 - HRI 0 11
 - (NC) 0 8

Source
2/2 VIDEO BD

NOTES
UNLESS OTHERWISE SPECIFIED, ALL
DIODES ARE 1N914/4148 TYPES.

3/3 MTH
BD

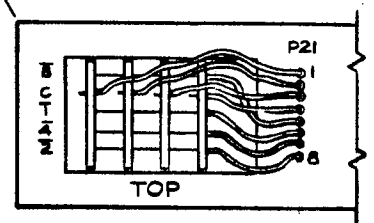
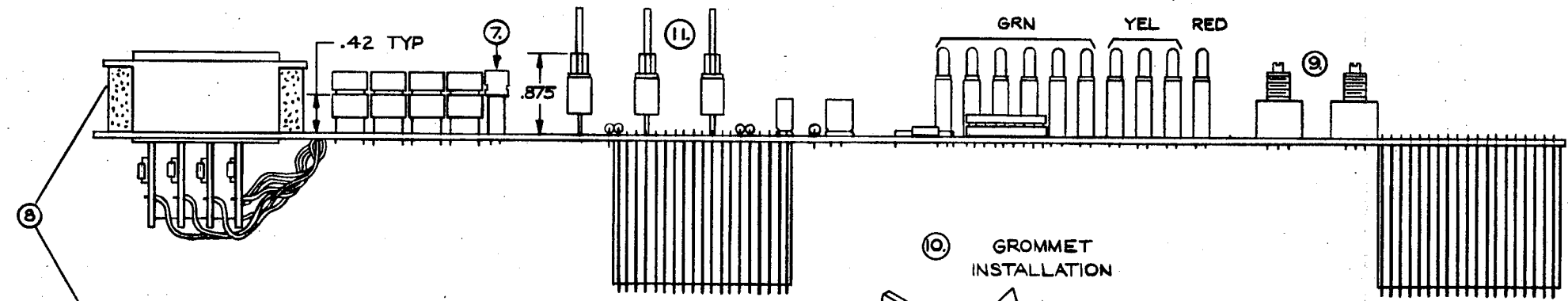
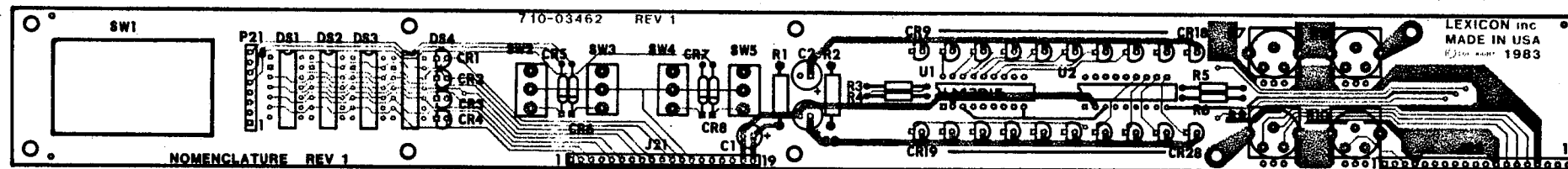
QTY	CODE	PART OR IDENTIFYING NO	NOMENCLATURE OR DESCRIPTION	MATERIAL SPECIFICATION
PARTS LIST				
UNLESS OTHERWISE SPECIFIED DIMENSIONS ARE IN INCHES TOLERANCES ARE FRACTIONS DECIMALS ANGLES		CONTRACT NO. lexicon		
APPROVALS		DATE	SCHEMATIC, FRONT	
DRAWN JB		6-14-83	PANEL BOARD, M1300....	
CHECKED <i>[Signature]</i>		7-5-83	SIZE FSCM NO.	DWG. NO. 060-03647
ISSUED <i>[Signature]</i>		7-7-83	SCALE NA	SHEET 1 OF 1

8 7 6 5 4 3 2 1

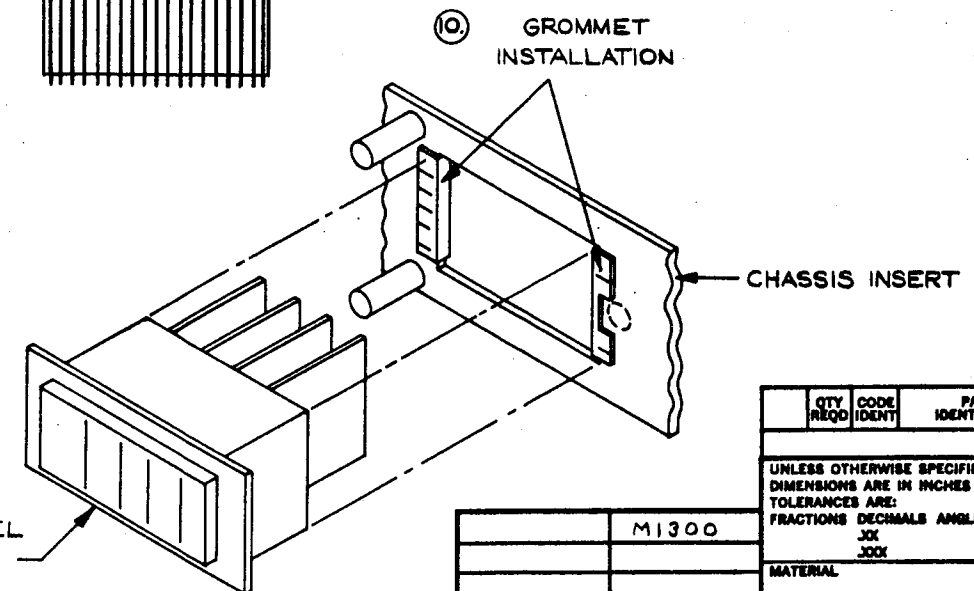
NOTES:

1. REFER TO BOM # 023-03604.
2. SOLDER TAIL PROTRUSION .080 MAX.
3. SOCKET DS1-DS4 AND U1.
4. SW2-SW4 TO BE MOUNTED PERPENDICULAR TO PC BOARD AT HEIGHT SHOWN.
5. FLEX CONNECTORS J21 AND J22 TO BE INSERTED FROM SOLDER SIDE AND SOLDERED FROM COMPONENT SIDE.
6. DO NOT INSTALL COMPONENTS SW5, R2, R5, R6, R9, R10, C3, U2, AND CR19-CR28 IN MONO UNITS.
7. WHEN INSTALLING CR1-CR4 NOTE THE LONGER LEAD IS THE CATHODE. (FOR CR9-CR18 THE SHORTER LEAD IS THE CATHODE.)
8. SWITCH INSTALLATION (SW1)
 - A. APPLY AN EVEN COAT OF GOODYEAR PLOIBOND ADHESIVE TO ENTIRE MATING SURFACE OF RUBBER SUPPORT BLOCKS AND INSTALL AS SHOWN.
 - B. HARD WIRE SWITCH TO P21 AS SHOWN.
 - C. ALLOW CURING OF ADHESIVE BEFORE FINAL ASSEMBLY.
9. IF METAL-BACKED POTS ARE USED, PLACE A PIECE OF GLASS TAPE UNDER EACH ONE.
10. INSTALL TWO 0.9" GROMMET INSULATION STRIPS P/N 540-01769 ONTO SIDES OF CHASSIS INSERT, P/N 700-03559, CUT-OUT. NOTCH OUT RIGHT SIDE GROMMET TO CLEAR STANDOFF.
11. ASSEMBLE SW2-SW5 FIRST (BEFORE SURROUNDING COMPONENTS) TO ENABLE USE OF ALIGNMENT JIG. SWITCHES TO BE INSTALLED WITH BUSHING KEY SLOTS FACING J21 (DOWN).

REVISIONS			
REV.	DESCRIPTION	DATE	APPROVED
0	RELEASE FOR PRODUCTION	5-23-83 9-13-83	CB 9/13/83
1	REVISED PER ECO NO. 831123-00.	12/15/83 JCR	16 DEC 83 12-19-83 RG
2	ADDED NOTE 11. STEREO RELEASE.	2/16/84 JCR	23 FEB 84 24 FEB 84 RG



— REAR VIEW —



QTY REQD	CODE IDENT	PART OR IDENTIFYING NO	NOMENCLATURE OR DESCRIPTION	MATERIAL SPECIFICATION
PARTS LIST				
UNLESS OTHERWISE SPECIFIED DIMENSIONS ARE IN INCHES TOLERANCES ARE: FRACTIONS DECIMALS ANGLES .XX .XXX .XXX		CONTRACT NO.		lexicon
APPROVALS		DATE		
DRAWN JCR		5/19/83		ASSEMBLY DRAWING FRONT PANEL BOARD, M1300
CHECKED RS.		9-13-83		
FINISH		ISSUED 2/16/84		SIZE FROM NO. DWG. NO. 080-03467 REV. 2
NEXT ASSY USED ON		APPLICATION DO NOT SCALE DRAWING		SCALE FULL SHEET 1 OF 1