

REVISIONS			
REV.	DESCRIPTION	DATE	APPROVED
0	RELEASE FOR PROT.	24 APR 65	<i>[Signature]</i>
1	RELEASE FOR PROD.	25 JUN 65	<i>[Signature]</i>
2	CORRECT ANALOG PMR GND AND C142 TO 100 PF ECO 850819-0	11/11/65	<i>[Signature]</i>
3	ADDED CR56 AT E7 H.V. PER ECO # 851107-00	11/11/65	<i>[Signature]</i>

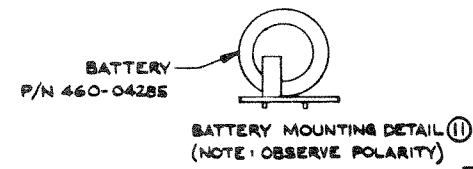
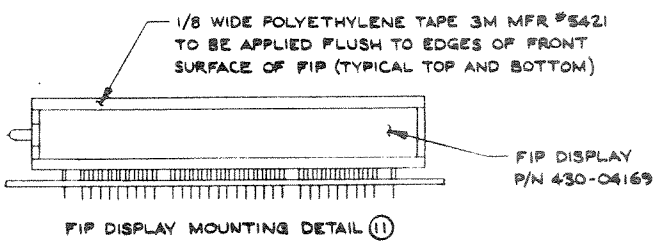
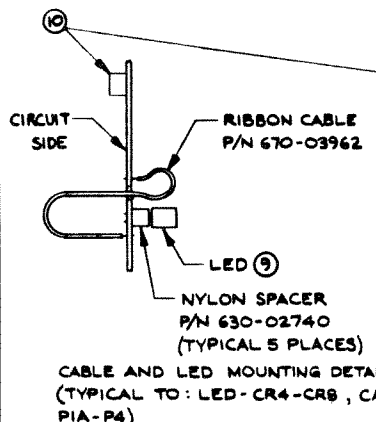
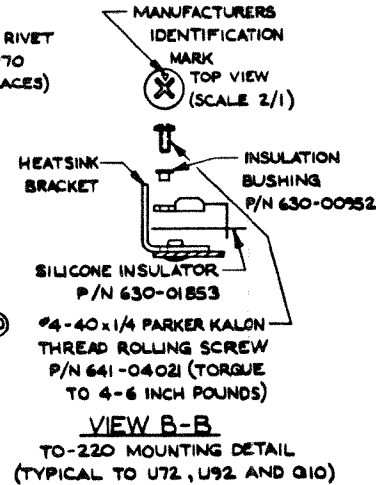
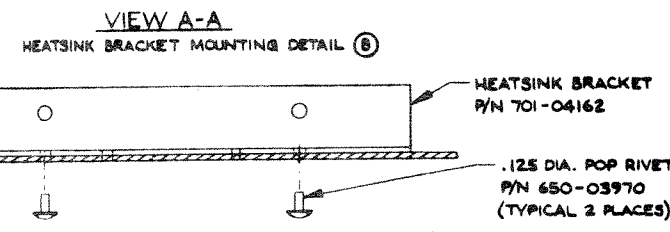
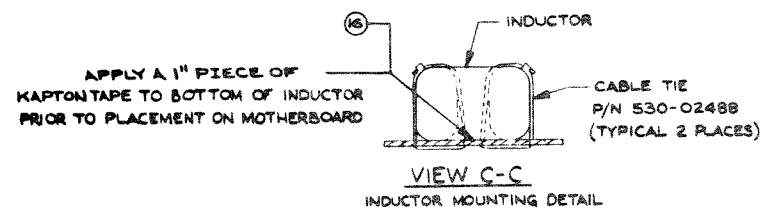
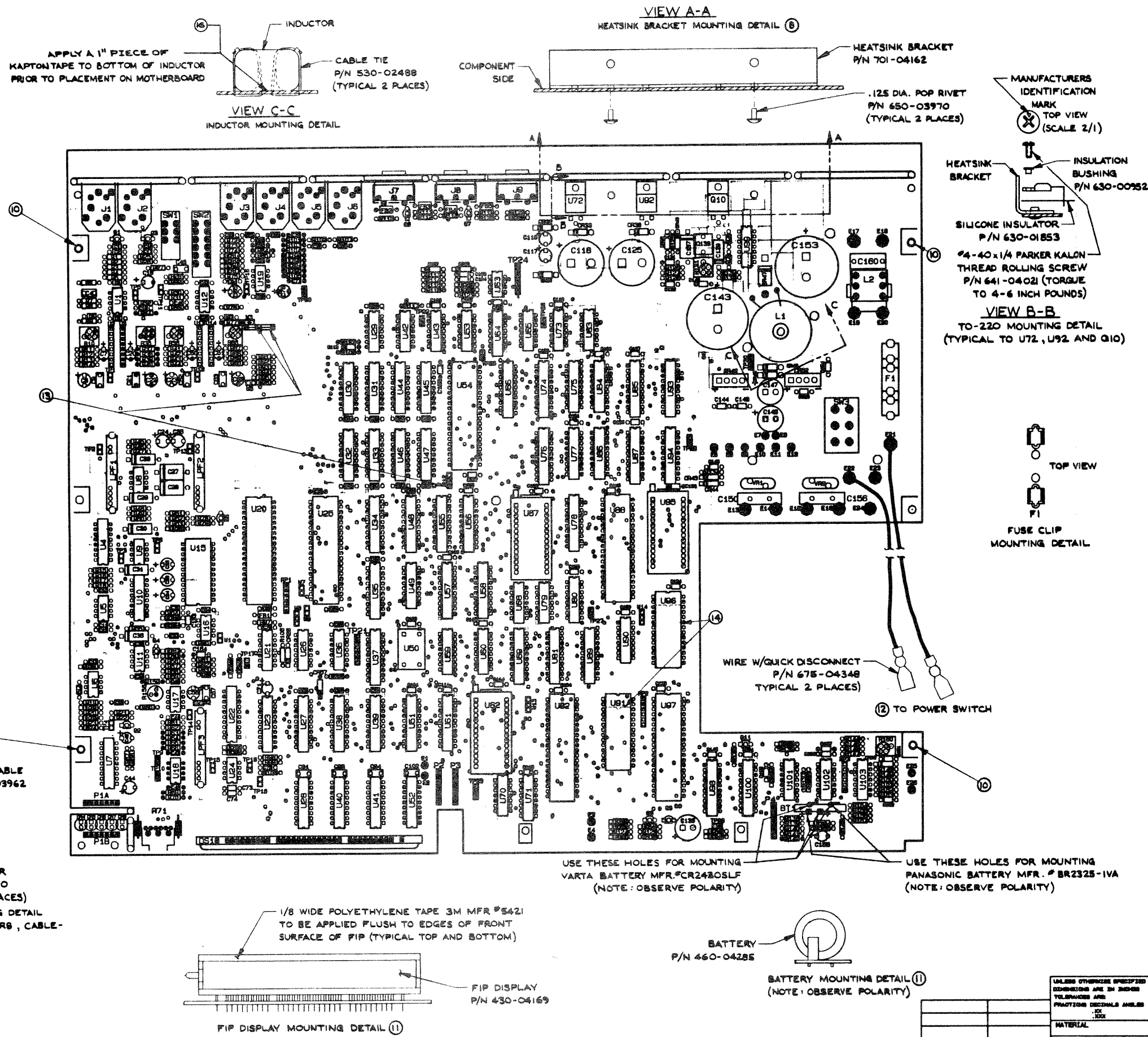
QTY REQD	CODE IDENT	PART OR IDENTIFYING NO	NOMENCLATURE OR DESCRIPTION	MATERIAL SPECIFICATION
PARTS LIST				
UNLESS OTHERWISE SPECIFIED DIMENSIONS ARE IN INCHES TOLERANCES ARE: FRACTIONS DECIMALS ANGLES				
CONTRACT NO.				
APPROVALS		DATE		
DRAWN JZ, SH		3/15/65		
CHECKED PG		4/13/65		
ISSUED <i>[Signature]</i>		15 APR 65		
MATERIAL		FINISH		
NEXT ASSY		USED ON		
APPLICATION		DO NOT SCALE DRAWING		

lexicon
 SCHEMATIC MOTHERBOARD, POWER SUPPLY, PCM70
 DWG. NO. 060-04148
 REV. 3
 SHEET 10 OF 10

FEDERAL INC. 05840

1

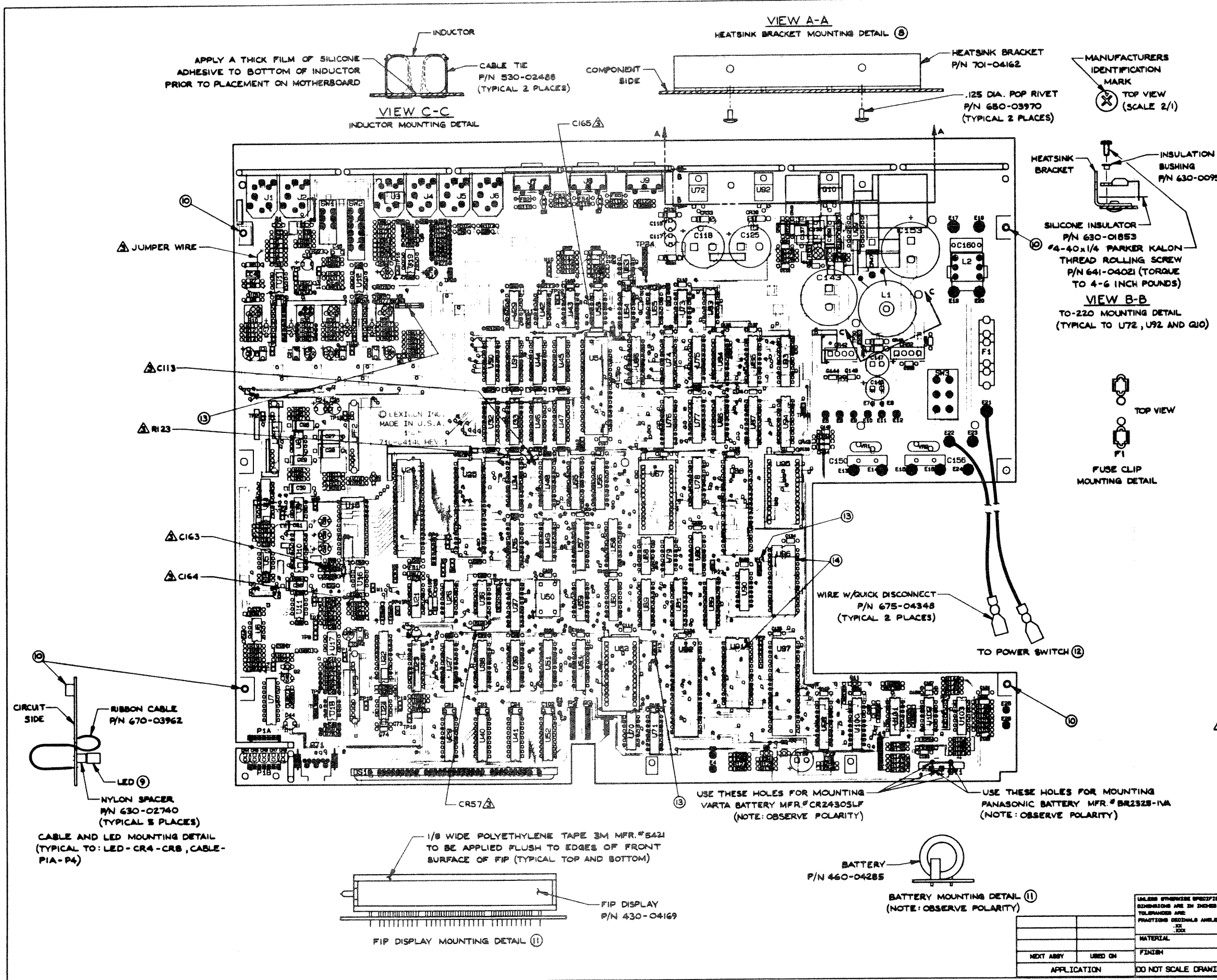




REVISIONS			
REV.	DESCRIPTION	DATE	APPROVED
0	RELEASE FOR PROTOTYPE	3/8/85	DHS
1	RELEASE FOR PRODUCTION	8/12/85	DHS
2	ADDED NOTES 13 AND 14, CHANGED CABLE TIE P/N PER ECO NO. 850819-00	AV 8/23/75 CHK DHS 8/28/85	EC DHS 8/28/85 PE DHS 8/28/85
3	ADDED C163-165, C113, CR67 AND (1) JUMPER WIRE. CHANGED NOTE 13 AND POSITION OF C113 AND R12 PER ECO NO. 850925-00	AV 9/27/85 CHK DHS 9/30/85	EC JAZ 9/30/85 PE DHS 9/30/85
4	REDRAWN WITH CHANGES PER ECO #850925-00	AV 10/28/85 CHK 23 OCT 85	EC JAZ 11/10/85 PE 29 OCT 85
5	ADDED NOTES 15 AND 16 PER ECO #851219-00	AV 1/24/86 CHK 27 Feb 86	EC JAZ 27 Feb 86 PE 27 Feb 86

- NOTES**
- REFER TO LEXICON BOM NO. 024-04224 AND 025-04225
 - ALL COMPONENTS TO BE INSTALLED FROM COMPONENT SIDE OF P.C.B. EXCEPT SHAGGED STANDOFFS AND P1 RIBBON CABLE.
 - MASKING FOR POST-SOLDER ASSEMBLY IS INDICATED BY SOLID AREAS ●
 - COMPONENT HEIGHT 1.00" MAXIMUM
 - LEAD PROTRUSIONS .080" MAXIMUM FROM CIRCUIT SIDE OF P.C.B.
 - SOCKET IC POSITIONS U4, U10, U15, U20, U22, U23, U25, U30, 31, U44, 45, U54, U62, U67, U73, U77, U82, U84, U85, U88, U91, U95-97 ONLY.
 - SQUARE PAD (□) DENOTES, PIN ONE OF IC, CATHODE OF DIODE, ANODE OF CAPACITOR, EMITTER OF TRANSISTOR.
 - HEATSINK BRACKET TO BE SECURED TO PCB WITH (2) .125 DIA. POP RIVETS. THIS IS TO BE DONE BEFORE THE INSTALLATION OF U72, U92, AND Q10.
 - LEXICON SUPPLIED JIG TO BE USED FOR LED MOUNTING TO ENSURE PROPER ALIGNMENT.
 - INSTALL SHAG STANDOFFS (QTY. 4) P/N 635-03633 FROM CIRCUIT SIDE.
 - TO BE ASSEMBLED AT CHASSIS KIT LEVEL, AFTER MOTHERBOARD ASSEMBLY.
 - TWIST LOOSELY AND ROUTE THRU TRANSFORMER BRACKET.
 - INSTALL W3, W4 JUMPER WIRES AND W12 JUMPER BLOCK P/N 490-02956. DO NOT INSTALL W2.
 - INSTALL U91 AND U95 IN PIN 3 LOCATION AS SHOWN WHEN 24 PIN I.C.'S ARE USED.
 - ADD DIODES CR69-62 TO J1 AND J2 PER ECO NO. 851219-00.
 - INSTALL 1" PIECE OF KAPTON TAPE UNDER L1 PER LEXICON P/N 720-05571.

UNLESS OTHERWISE SPECIFIED DIMENSIONS ARE IN INCHES TOLERANCES ARE DECIMALS UNLESS INDICATED		CONTRACT NO.		lexicon	
APPROVALS	DATE	PC, MOTHERBOARD, M70		ASSEMBLY DRAWING	
DRAWN SHH	8/10/85	CHECKED WSN	8/11/85	SIZE FBOM NO.	DWG. NO.
ISSUED DHS	8/12/85	FINISH	D	060-04145	REV 5
APPLICATION		DO NOT SCALE DRAWING		SCALE 1:1	SHEET 1 OF 1



REVISIONS			
REV.	DESCRIPTION	DATE	APPROVED
0	RELEASE FOR PROTOTYPE	3/8/85	DHS
1	RELEASE FOR PRODUCTION	8/17/85 26 JUNE 85	DHS
2	ADDED NOTES 13 AND 14, CHANGED CABLE TIE P/N PER ECO #850819-00	DWN N 8/23/85 CHK DMS 8/26/85 PE DMS 8/28/85	DMS
3	ADDED C163-C165, C113, CR57 AND (1) JUMPER WIRE. CHANGED NOTE 13 AND POSITION OF C113 AND R123. PER ECO # 850925-00	DWN N 9/27/85 CHK DMS 10/8/85 PE DMS 10/8/85	DMS

- NOTES**
- REFER TO LEXICON BOM NO. 024-04224 AND 025-04225
 - ALL COMPONENTS TO BE INSTALLED FROM COMPONENT SIDE OF P.C.B. EXCEPT SHAGGED STANDOFFS AND P1 RIBBON CABLE.
 - MASKING FOR POST-SOLDER ASSEMBLY IS INDICATED BY SOLID AREAS (■)
 - COMPONENT HEIGHT 1.00" MAXIMUM
 - LEAD PROTRUSIONS .080" MAXIMUM FROM CIRCUIT SIDE OF P.C.B.
 - SOCKET IC POSITIONS U4, U10, U15, U20, U22, U23, U25, U30-33, U44-49, U54, U52, U57, U70, U77, U82, U84, U88, U89, U91, U95-97 ONLY.
 - SQUARE PAD (□) DENOTES, PIN ONE OF IC, CATHODE OF DIODE, ANODE OF CAPACITOR, EMITTER OF TRANSISTOR.
 - HEATSINK BRACKET TO BE SECURED TO PCB WITH (2) .125 DIA. POP RIVETS. THIS IS TO BE DONE BEFORE THE INSTALLATION OF U72, U92 AND Q10.
 - LEXICON SUPPLIED J16 TO BE USED FOR LED MOUNTING TO ENSURE PROPER ALIGNMENT.
 - INSTALL SWAGE STANDOFFS (QTY. 4) P/N 635-03638 FROM CIRCUIT SIDE.
 - TO BE ASSEMBLED AT CHASSIS KIT LEVEL, AFTER MOTHERBOARD ASSEMBLY.
 - TWIST LOOSELY AND ROUTE THRU TRANSFORMER BRACKET.
 - INSTALL W2, W6, W12, W13 AND W14 AS SHOWN. DO NOT INSTALL W2 AND W6.
 - INSTALL U91 AND U96 IN PIN 3 LOCATION AS SHOWN WHEN 24 PIN I.C.'S ARE USED.

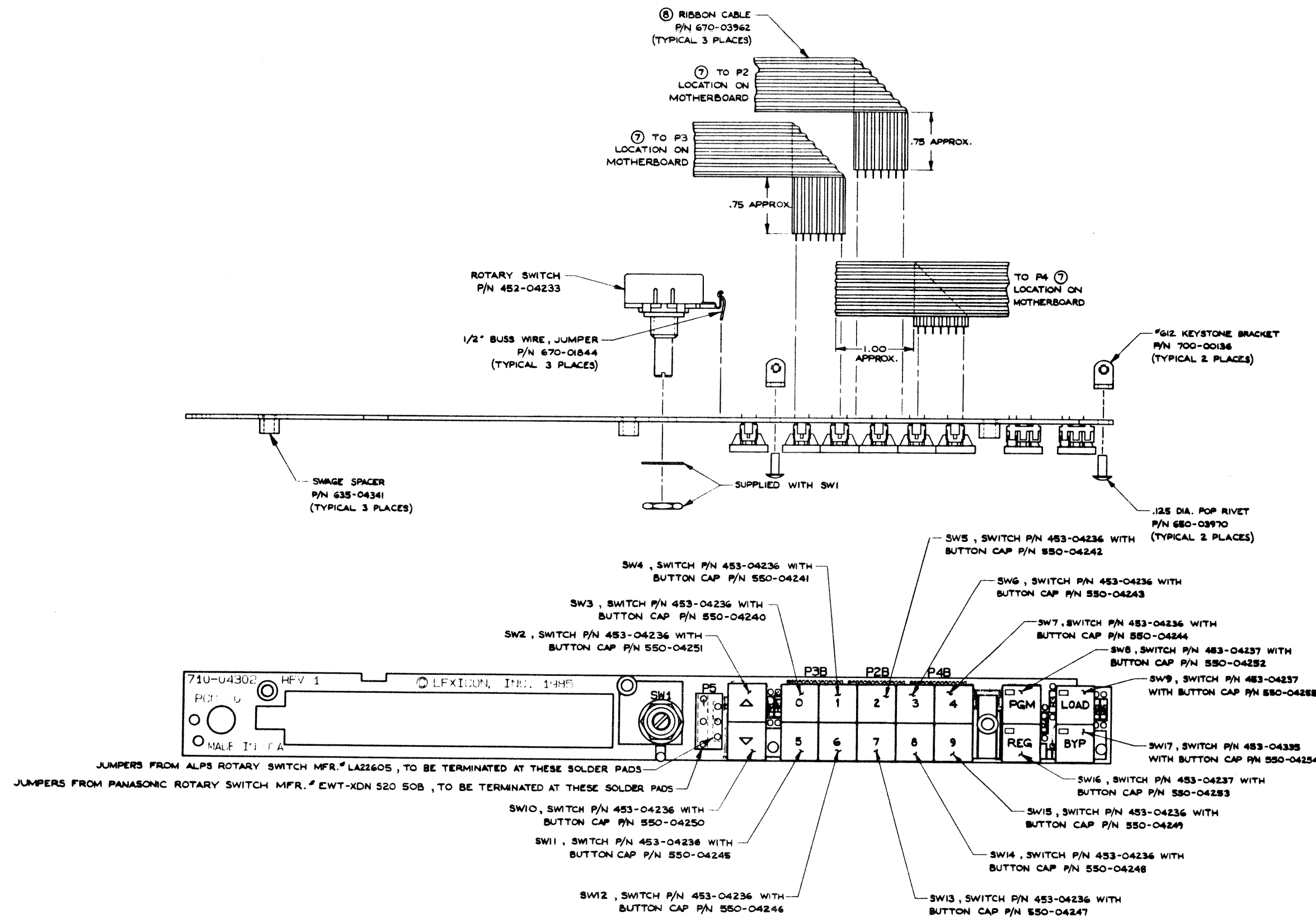
CONTRACT NO.		PC, MOTHERBOARD, M70	
APPROVALS	DATE	ASSEMBLY DRAWING	
DRAWN SNH	6/10/85		
CHECKED WSN	6/11/85	SIZE	PROJ. NO.
ISSUED DHS	6/12/85	DWG. NO.	080-04145
APPLICATION		SCALE	1:1
DO NOT SCALE DRAWING		SHEET 1 OF 1	



REV.	DESCRIPTION	DATE	APPROVED
0	RELEASED FOR PROD.	30 July 85	<i>[Signature]</i>
1	REVERSED MOUNTING DIRECTION OF RIVETS AND CHANGED BUTTON CAP P/N'S PER ECO# 850819-00	DWN 11/8/23/85 CHK 1/16/85	DC <i>[Signature]</i> PC <i>[Signature]</i>

NOTES

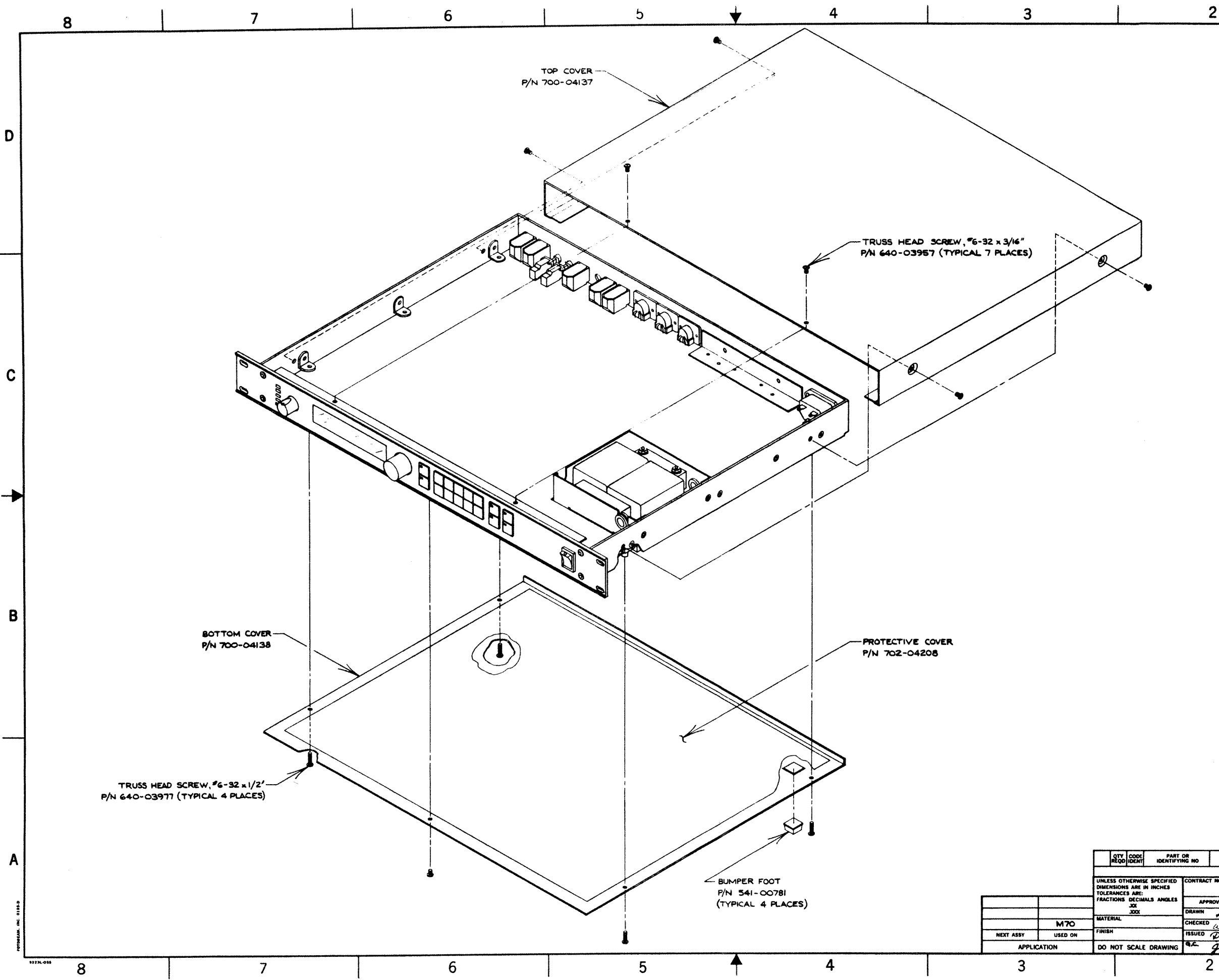
- REFER TO LEXICON BOM NO. 023-04220 .
- ALL COMPONENTS TO BE INSTALLED FROM COMPONENT SIDE OF P.C.B. EXCEPT P2B, P3B, P4B, P5, SW1 AND KEYSTONE BRACKET WITH RIVETS, AS SHOWN.
- COMPONENT HEIGHT 1.00" MAXIMUM.
- LEAD PROTRUSIONS .080" MAXIMUM FROM CIRCUIT SIDE OF P.C.B.
- SQUARE PAD (□) DENOTES PIN ONE.
- OBSERVE PIN ONE POLARITY ON ALL RIBBON CABLE CONNECTIONS TO MOTHERBOARD.
- CONNECT AS SHOWN AND FOLD PRIOR TO CONNECTING TO MOTHERBOARD AS SHOWN . ROUTE P2 RIBBON CABLE ABOVE P3 RIBBON CABLE FOR PROPER CONNECTING .



JUMPERS FROM ALPS ROTARY SWITCH MFR. # LA22605 , TO BE TERMINATED AT THESE SOLDER PADS
 JUMPERS FROM PANASONIC ROTARY SWITCH MFR. # EWT-XDN S20 50B , TO BE TERMINATED AT THESE SOLDER PADS

UNLESS OTHERWISE SPECIFIED DIMENSIONS ARE IN INCHES TOLERANCES ARE FRACTIONS DECIMALS ANGLES .XX .XXX		CONTRACT NO.		lexicon	
APPROVALS		DATE	PC, FRONT PANEL BOARD, M70		
DRAWN SNH		6/26/85	ASSEMBLY DRAWING		
CHECKED <i>[Signature]</i>		7/9/85	SIZE FROM NO.	DWG. NO.	REV
ISSUED <i>[Signature]</i>		7/9/85	D	OBO-04307	1
APPLICATION		DO NOT SCALE DRAWING	SCALE 1.5	SHEET 1 OF 1	





REVISIONS			
REV.	DESCRIPTION	DATE	APPROVED
0	RELEASE FOR PRODUCTION	19 Aug 85	<i>[Signature]</i>
1	UPDATED DOCUMENT CONTROL BLOCK PER ECO # 851107-00	11/1/85 CHK: <i>[Signature]</i> APP: <i>[Signature]</i>	<i>[Signature]</i>

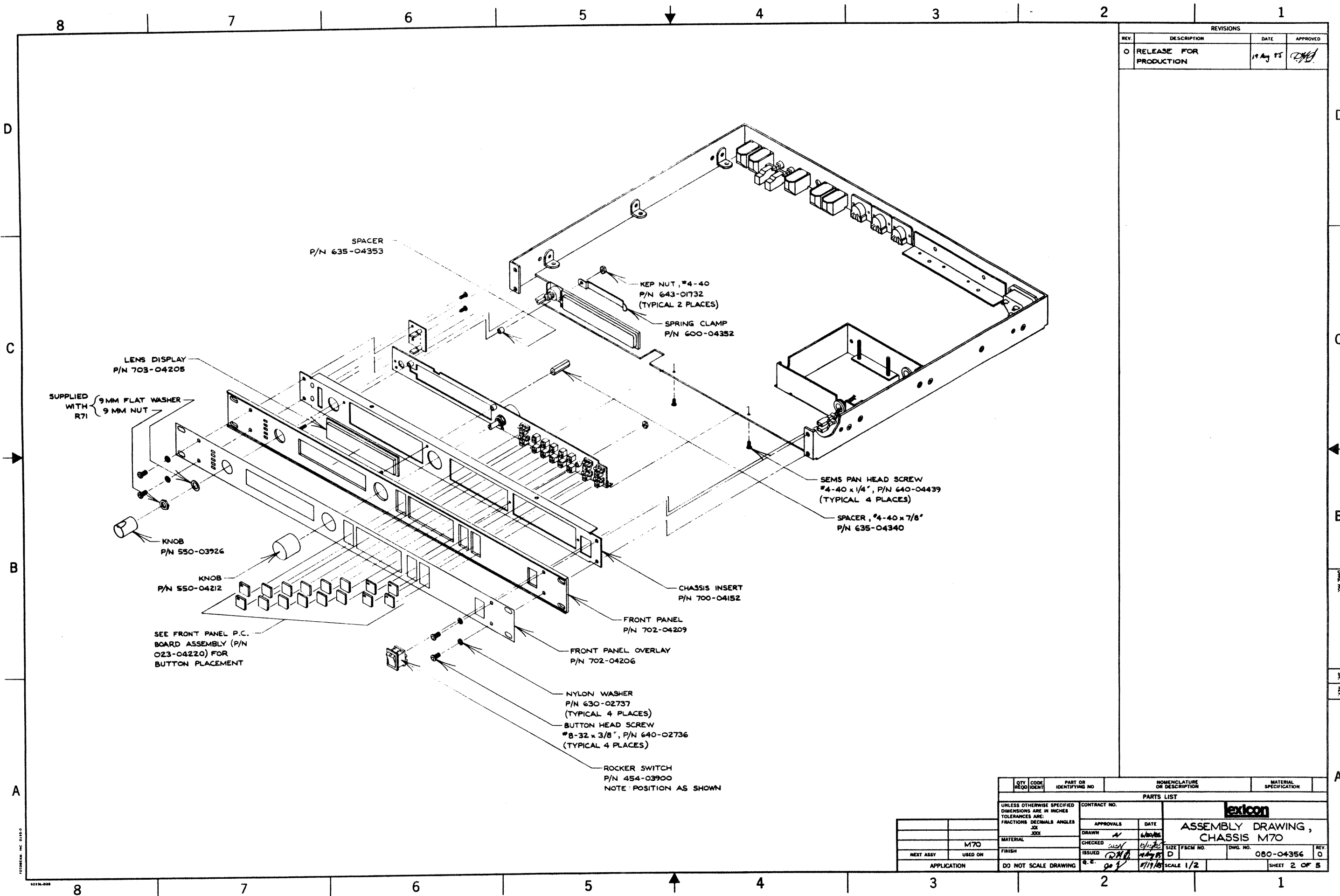
- NOTES**
- TORQUE ALL SCREWS AS FOLLOWS:
 #4-40 TO 4-6 INCH/POUNDS
 #6-32 TO 6-8 INCH/POUNDS
 #8-32 TO 8-10 INCH/POUNDS
 - TOP COVER INSTALLATION TO BE MADE PRIOR TO BOTTOM COVER INSTALLATION.
 - PROTECTIVE COVER TO BE GLUED TO BOTTOM COVER, AS SHOWN, USING 3M #77 SPRAY ADHESIVE, APPLIED TO PROTECTIVE COVER ONLY. POSITIONING TO BE ACHIEVED BY USE OF A JIG.
 - THE USE OF MANUFACTURING FIXTURES MAY BE REQUIRED FOR PROPER ALIGNMENT OF CERTAIN ITEMS DURING ASSEMBLY.

DOCUMENT CONTROL BLOCK: 080-04356	
SHEET	REVISION
1 OF 5	1
2 OF 5	0
3 OF 5	0
4 OF 5	0
5 OF 5	1

QTY REQD	CODE IDENT	PART OR IDENTIFYING NO	NOMENCLATURE OR DESCRIPTION	MATERIAL SPECIFICATION
PARTS LIST				
UNLESS OTHERWISE SPECIFIED DIMENSIONS ARE IN INCHES TOLERANCES ARE FRACTIONS DECIMALS ANGLES .XX .XXX .XXX			CONTRACT NO.	
MATERIAL		APPROVALS	DATE	lexicon ASSEMBLY DRAWING, CHASSIS M70 SIZE: FSCM NO. DWG. NO. 080-04356 REV. 1 SCALE: 1/2 SHEET 1 OF 5
FINISH		DRAWN	6/20/85	
NEXT ASSY USED ON		CHECKED	6/16/85	
APPLICATION		ISSUED	19 Aug 85	
DO NOT SCALE DRAWING		APP. <i>[Signature]</i>	8/1/85	

1977A-018
 1977A-018



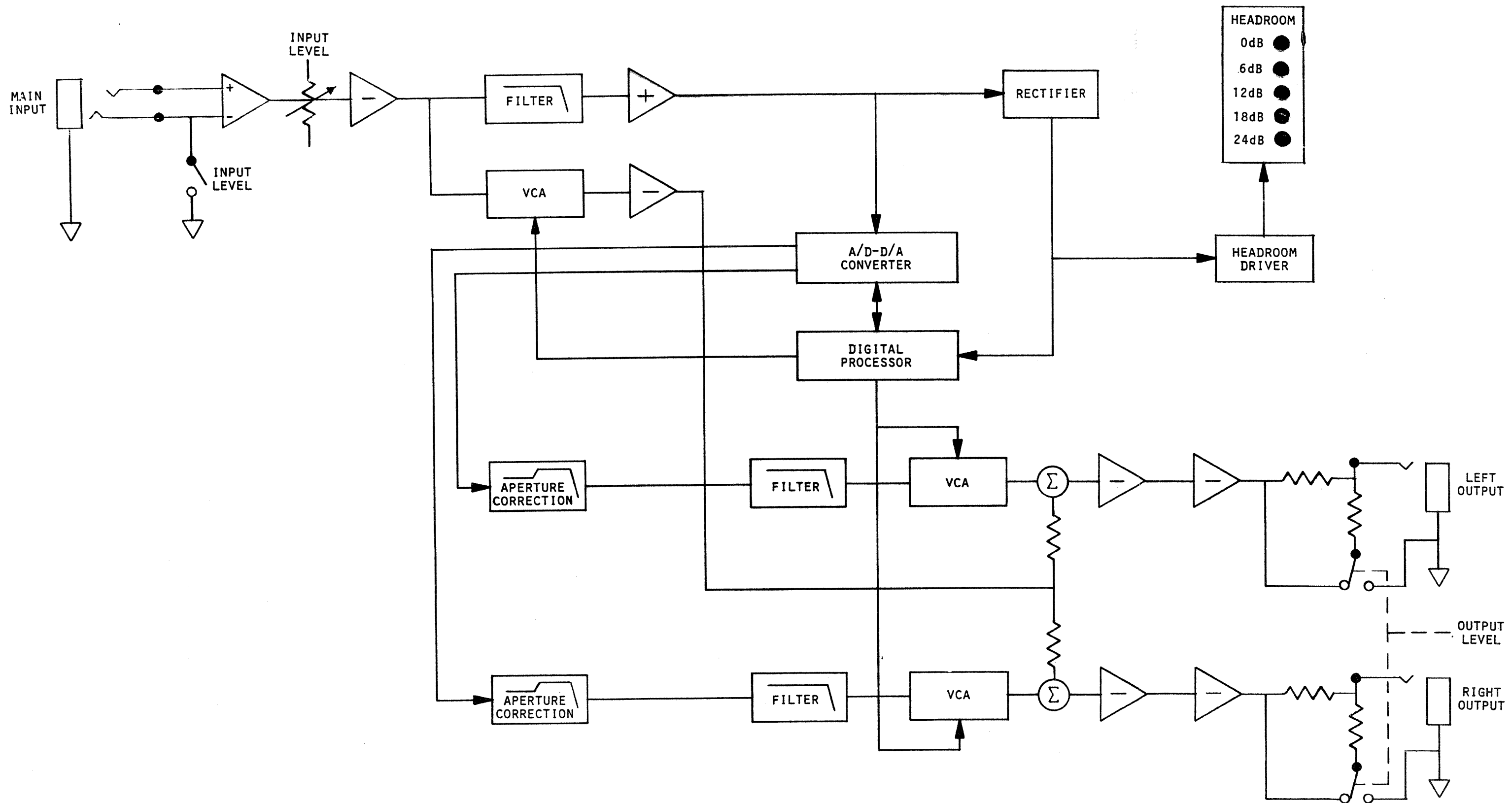


REVISIONS			
REV.	DESCRIPTION	DATE	APPROVED
0	RELEASE FOR PRODUCTION	19 Aug 75	<i>[Signature]</i>

QTY	CODE	PART OR	NOMENCLATURE	MATERIAL
REQD	IDENT	IDENTIFYING NO	OR DESCRIPTION	SPECIFICATION
PARTS LIST				
UNLESS OTHERWISE SPECIFIED DIMENSIONS ARE IN INCHES TOLERANCES ARE: FRACTIONS DECIMALS ANGLES XXX		CONTRACT NO.		
MATERIAL		APPROVALS	DATE	lexicon ASSEMBLY DRAWING, CHASSIS M70
FINISH		DRAWN	6/20/75	
NEXT ASSY USED ON		CHECKED	6/22/75	
APPLICATION		ISSUED	7/1/75	
DO NOT SCALE DRAWING		SCALE	1/2	DWG. NO. 080-04356 REV. 0 SHEET 2 OF 5

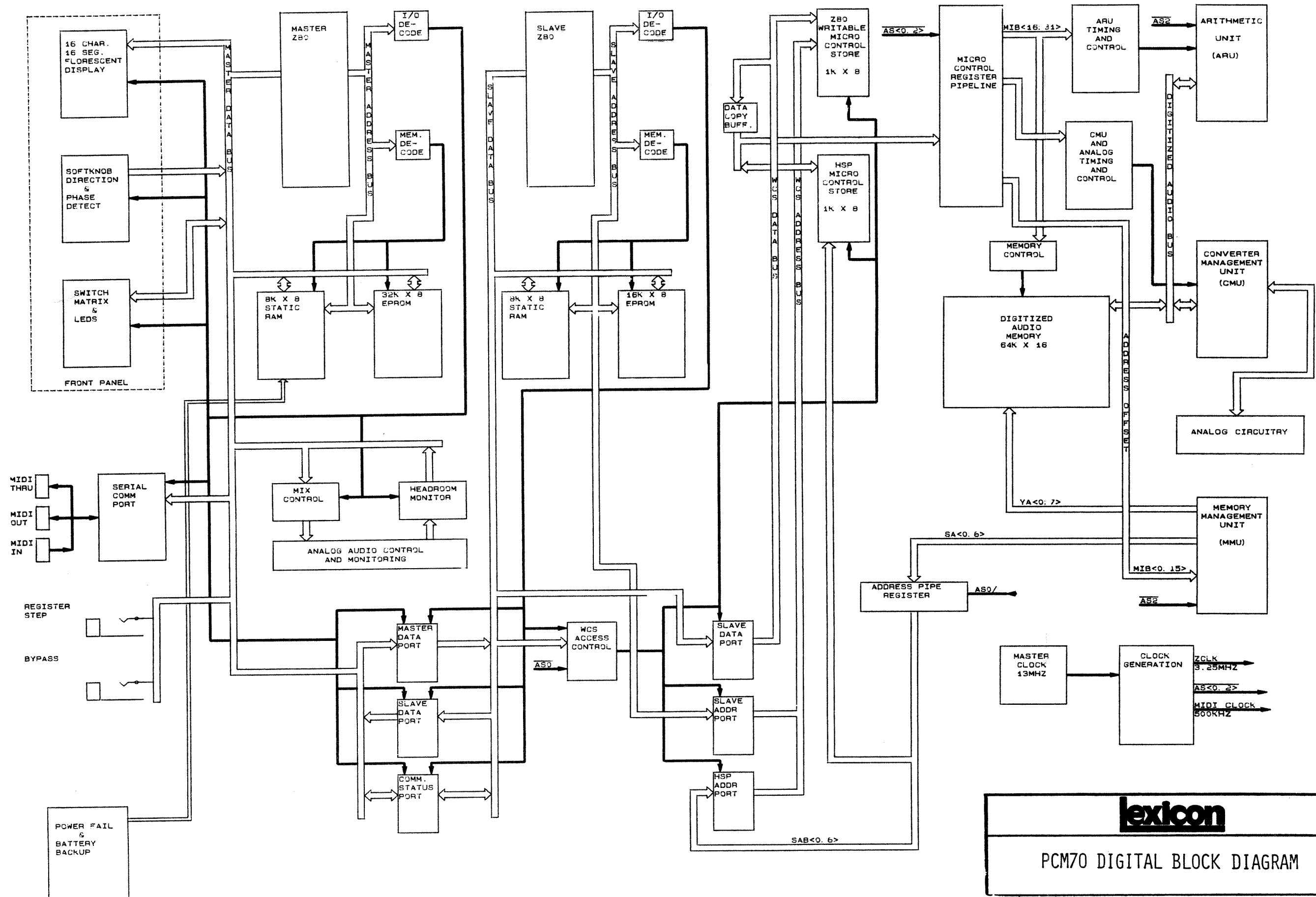
02324-002
 02324-002



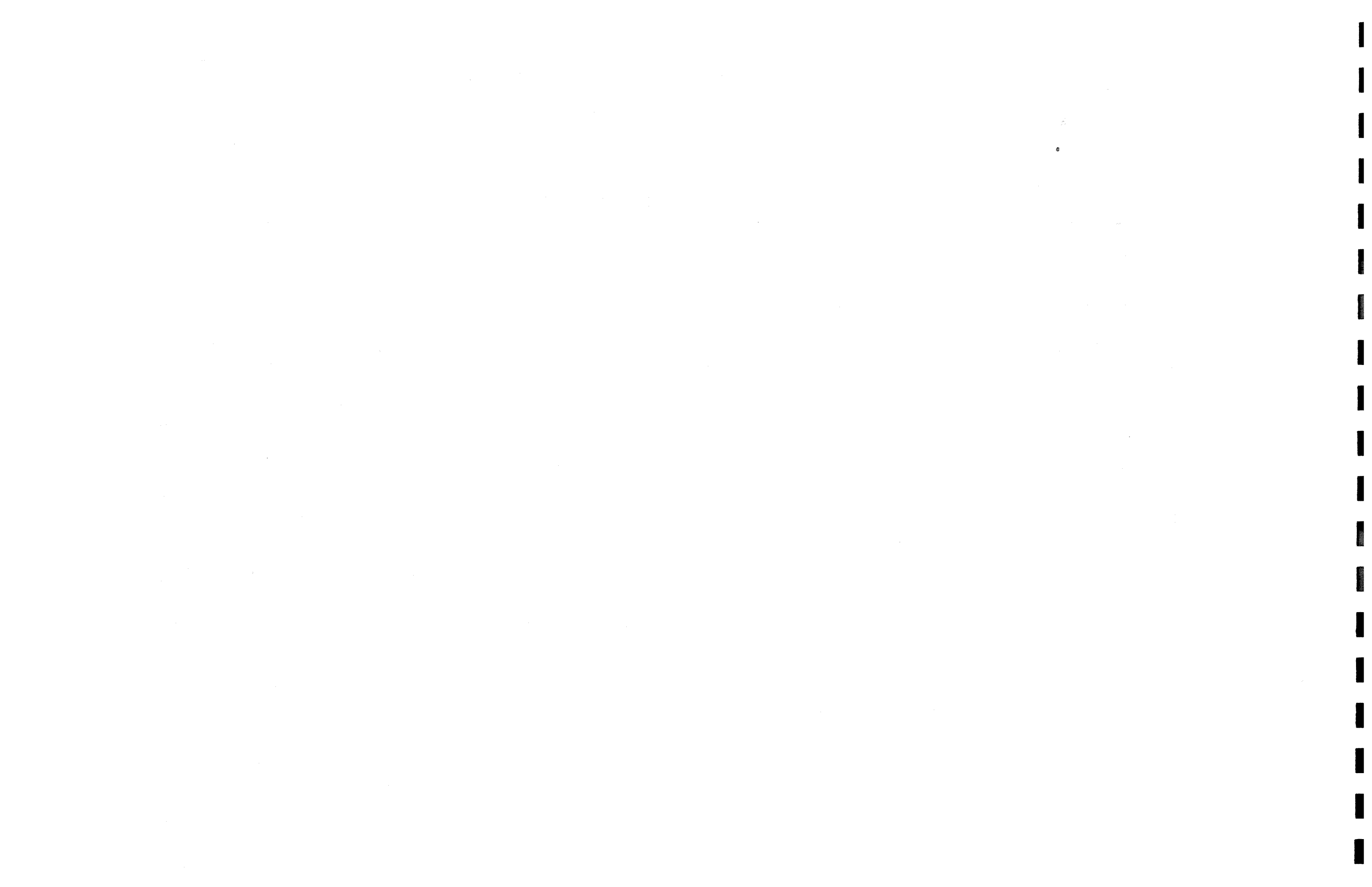


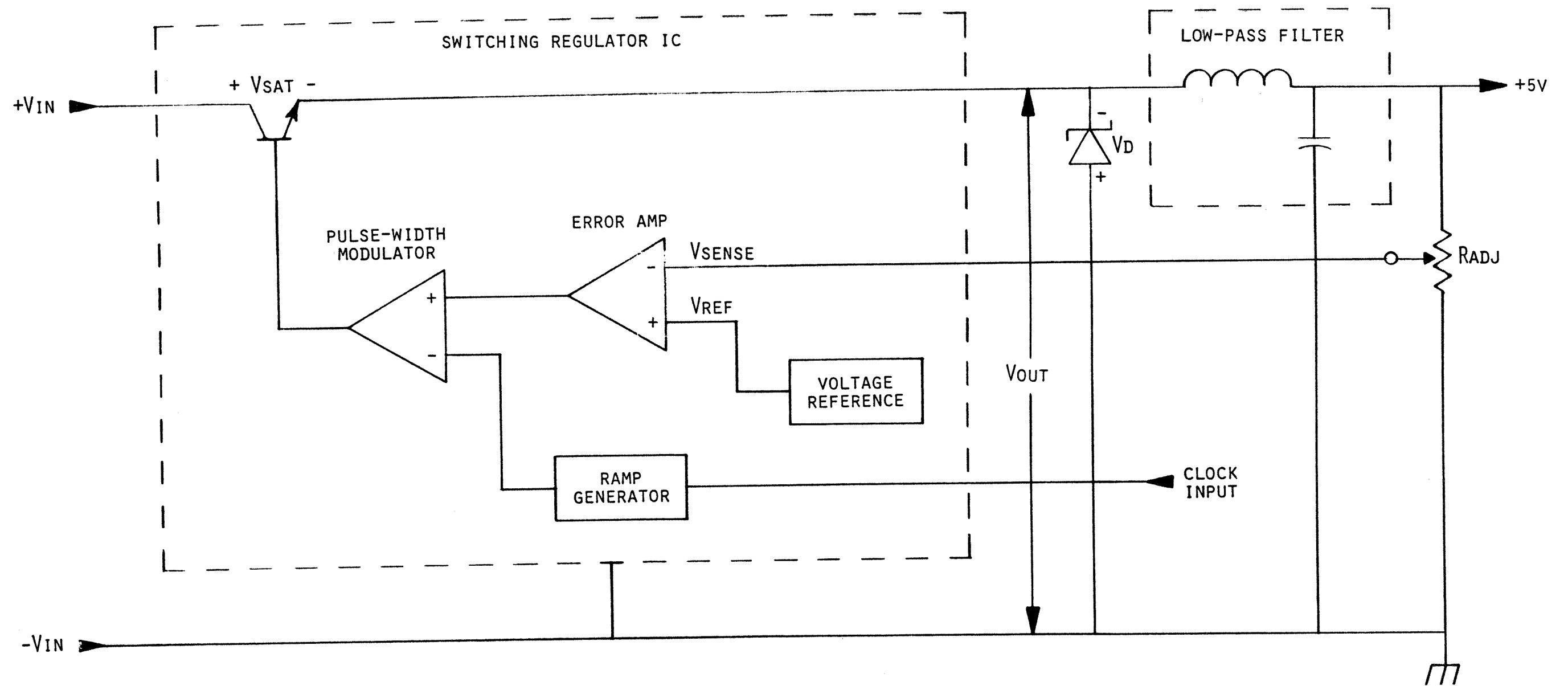
lexicon
 PCM70 ANALOG BLOCK DIAGRAM





lexicon
PCM70 DIGITAL BLOCK DIAGRAM





lexicon
 SWITCHING SUPPLY
 SIMPLIFIED BLOCK DIAGRAM

