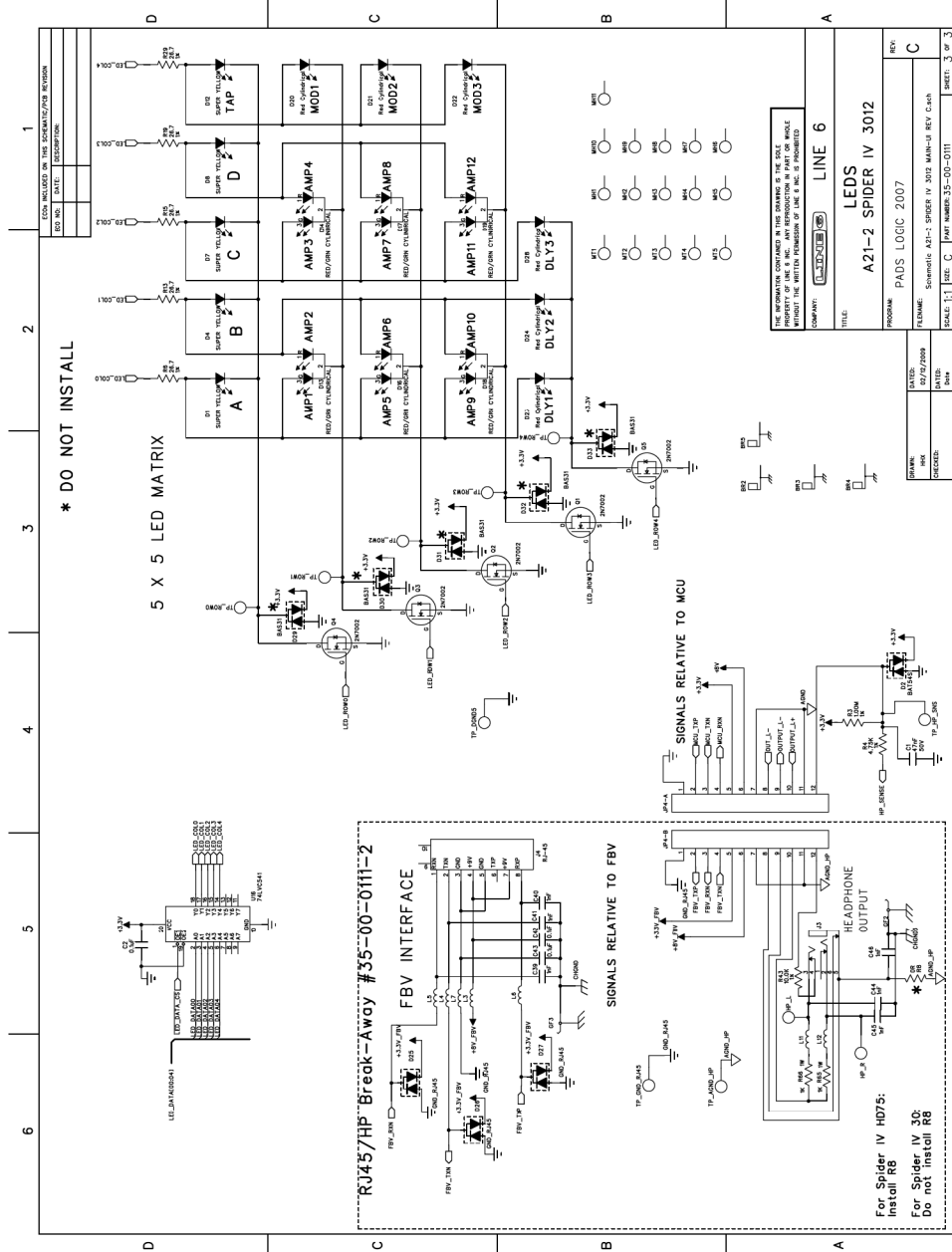


DSP CORE CLOCK = 99,993,600 Hz (approx 100MHz)
 256FS_CLK = 9,999,360 Hz
 64FS_CLK = 2,499,840 Hz
 MASTER_CLK = 12,000,000 Hz

COMPANY	LINE 6
TITLE	DIGITAL SECTION A21-2 SPIDER IV 3012
PROGRAM	PADS LOGIC 2007
DATE	02/12/2008
DESIGNED BY	HHX
CHECKED BY	
SCALE	1:1
SIZE	C
PART NUMBER	35-00-0111
SHEET	2 OF 3



3	12	30-51-0387	1 EA	A	TONE BAR 16.5 X 1.4 X .72 EGS STL SPIDER VI A21-2
3	13	30-57-0580	1 EA	A	HANDLE STRAP HEAVY DUTY BLACK
3	14	30-57-0581	2 EA	A	ENDCAPS BLACK TEXTURED FINISH
3	15	40-25-0083	1 EA	A	4 STICKER CARB WOOD CABINET
2	12	50-04-0071-2	1 EA	B	ASSY E/M CHASSIS SPIDER IV-15 A21-2 JA US
3	1	11-30-0013	1 EA	A	XFMR 100/120VAC 16.5VAC x 2 / 7.2VAC SPIDER2-3012
3	2	24-19-0002	1 EA	A	FUSE 1A 250V 5MM x 20mm FRNT
3	3	50-04-0071	1 EA	C	ASSY E/M CHASSIS COMMON-PARTS SPIDER IV-30 A21-2
4	1	21-34-0055-2	1 EA	B	CBL ASSY 2 PIN 11" LG
4	2	21-34-1015	1 EA	A	CBL FSTN .187-RCPT/.250-F FLAG 1-COND 161.34MM STRND 18AWG BK
4	3	21-34-9036	1 EA	A	CABLE ASSEMBLY - 12 PIN 22 AWG
4	4	24-24-0002	1 EA	A	SWITCH POWER ROCKER PNL MNT M R21S
4	5	30-00-0043	6 EA	A	SCREW 6-32 X 5/16 LG WITH LOCK WASHER PHIL PAN ZINC-PLATED STEEL
4	6	30-00-0402	1 EA	A	SCREW #4 x 1/2IN SEMS w/EXT. TOOTH WASHER STL/ZNC
4	7	30-00-0606	4 EA	A	SCREW 6-32 x 7/16 w/LK WASHER STL PPB
4	8	30-00-0610	1 EA	A	SCREW 6-32 x 5/8 IN PPZ STL ZINC w/LOCK WASHER
4	9	30-03-0400	1 EA	A	WASHER #4 SPLIT LOCKWASHER ZINC
4	10	30-03-0425	1 EA	A	WASHER #4 0.125" ID x .233" OD .018 HEIGHT ZINC PLATE
4	11	30-06-0440	1 EA	A	NUT HEX .242 4-40 STL/ZNC
4	12	30-06-0832	4 EA	A	NUT .335 HEX 8-32 STL ZINC W/ TOOTH WASHER
4	13	30-15-0404	1 EA	A	SHOULDER BUSHING TO-220
4	14	30-15-4020	1 EA	A	SPACER .31 IN .164 IN .35 IN NYLON
4	15	30-24-0003	3 EA	A	CABLE TIE 4" CLEAR
4	16	30-27-0353	5 EA	E	BUTTON PLASTIC CLEAR W/CHROME TOP A21
4	17	30-42-0062	1 EA	E	OVERLAY UI 16.5 X 2.3 X .020 PC CLEAR SPIDER IV A21-2
5	1	41-00-0213	1 EA	D	ARTWORK SILKSCREEN FRONT PANEL SPIDER IV-30 A21-2
4	18	30-45-0023	10 EA	D	KNOB 0.77" DIA X 0.71" HT PLAS TIC CHROME PLATED A21
4	19	30-51-0388	1 EA	E	CHASSIS 16.5 X 5.9 X 3.3 ALUM SPIDER IV A21-2
5	1	41-00-0210	1 EA	D	ARTWORK SILKSCREEN CHASSIS REAR SPIDER IV-30 A21-2
4	20	30-63-0049-1	1 EA	B	FOAM W/ADHESIVE 1 SIDE 419MM X 6.35MM X 2MM A21-2
4	21	30-63-1550	2 EA	B	FOAM W/ADH. 15.50" x 0.25" x 0.06" VOLARAPOLOLEFIN
4	22	30-63-4003	1 EA	A	PAD THERMAL TO-220 TYPE: K6 BERG K6AC-58
4	23	30-75-9600	1 EA	A	GROMMET RUBBER 7/16-D x 1/16 GRV x 3/4" GRV-DIA BLACK
4	24	40-25-0148	1 EA	A	LABEL ETL RYDER 2"X 1" INTERTEK
4	25	50-00-0001	1 EA	A	ASSY RECEPTACLE-A/C W/GND WIRE SNAP-IN
5	1	21-14-0002	1	A	JACK IEC w/FUSE MALE 3 PIN PAN EL MOUNT SNAP IN VERT
5	2	21-34-1116	1	C	CBL EARTHING w/EYELET 16AWG 5" GREEN w/YELLOW STRIPE
4	26	50-02-0111	1 EA	B	PC3A MAIN-UI A21-2 SPIDER IV 30
5	1	01-24-1002	2 EA		RES 10.0K 1% 0805
5	2	01-24-1003	1 EA		RES 100K 1% 0805
5	3	01-24-1004	1 EA		RES 1.00M 1% 0805
5	4	01-24-10R0	1 EA		RES 10.0R 1% 0805
5	5	01-24-1332	4 EA		RES 13.3K 1% 0805
5	6	1/24/1912	2 EA		RES 19.1K 1% 0805
5	7	1/24/2002	2 EA		RES 20.0K 1% 0805
5	8	01-24-22R1	5 EA		RES 22.1R 1% 0805
5	9	01-24-26R7	5 EA		RES 26.7R 1% 0805
5	10	1/24/4750	1 EA		RES 475R 1% 0805
5	11	1/24/4751	12 EA		RES 4.75K 1% 0805

R4 R5 R12 R14 R18 R28 R31 R40 R41 R45 R51 R52

5	12	1/24/5492	1 EA	R44			RES 54.9K 1% 0805
5	13	01-24-5R11	2 EA	R25 R26			RES 5.11R 1% 0805
5	14	01-25-0000	1 EA	R36			RES OR 1% 0603
5	15	01-25-5R11	1 EA	R37			RES 5.11R 1% 0603
5	16	01-48-6103	10 EA	R11 R16 R17 R24 R30 R35 R42 R57 R58 R59			POT MONO 10KB LINEAR TAPER 25MM W/9MM NUT D-SHAFT
5	17	03-45-0332	1 EA	C79			CAP FILM 3.3nF 50V 5% 1206
5	18	03-50-0220	1 EA	C22			CAP NPO 22pF 50V 5% 0805
5	19	03-50-0330	1 EA	C23			CAP NPO 33pF 50V 5% 0805
5	20	03-50-0470	1 EA	C24			CAP NPO 47pF 50V 5% 0805
5	21	03-52-0104	37 EA	C2 C9 C11 C13 C21 C25 C27 C52 C53 C54 C55 C56 C57 C58 C59 C60 C61 C62 C63			CAP X7R 0.1uF 50V 10% 0805
5	22	03-52-0473	2 EA	C64 C65 C66 C68 C69 C70 C71 C80 C81 C82 C87 C88 C89 C90 C91 C92 C93 C94			CAP X7R 47nF 50V 10% 0805
5	23	03-80-0107	1 EA	C1 C30			CAP ELEC 100uF 10V 20% SM 6.3/5.4/7.8
5	24	03-80-0108	1 EA	C29			CAP ELEC 1000uF 6.3V 20% SM 10/10.2/12
5	25	03-80-0476	1 EA	C8			CAP ELEC 47uF 10V 20% SM 5/5.4/6.5
5	26	03-82-0106	1 EA	C33			CAP ELEC 10uF 16V 20% SM 4/5.4/5.5
5	27	03-88-0105	4 EA	C4 C5 C10 C12			CAP ELEC 1uF 50V 20% VS SM
5	28	06-23-0054	5 EA	C3 C6 C7 C14 C15			DIODE SCHOTTKY DUAL 30V 200mA 5nS SOT-23 SM
5	29	9/6/7002	2 EA	D2 D10			TRANS MOSFET N-CHAN 60V 7R5 SOT-23 SM
5	30	11-00-1201	5 EA	Q1 Q2 Q3 Q4 Q5			CRYSTAL 12MHz SHORT CAN HC49 T H
5	31	12-54-0072	1 EA	Y1			IC OP AMP DUAL TL072 SM
5	32	12-62-0053	1 EA	U9			IC SWITCH ANALOG TRIPLE 2-CHAN TSSOP-16 SM
5	33	12-64-4552	1 EA	U12			IC CONVERTER 3V 24 BIT 56KHz AUDIO CODEC AK4552 SM
5	34	15-52-0541	1 EA	U16			IC 74LVC541A LOW VOLT OCTAL BU FFER/DRIVER SOIC-20 SM
5	35	15-62-0014	1 EA	U6			IC 74HC14 HEX SCHMITT TRIGGER INVERTERS SO-14 SM
5	36	15-62-1009	1 EA	U8			IC 74HCU04 HI SPEED CMOS LOGIC HEX INVERTER TSSOP-14 SM
5	37	15-72-0001	1 EA	U7			IC SRAM 256K x 8 BIT TSOP32 SM
5	38	15-86-6362	1 EA	U10			IC DSP 24 BIT AUDIO DSP56362 TQFP-144 SM
5	39	18-00-0003	6 EA	D20 D21 D22 D23 D24 D28			LED RED CYLINDRICAL LAMP T-1 3 MM 627nm TH
5	40	18-06-0003	6 EA	D13 D14 D16 D17 D18 D19			LED RED/GRN CYLINDRICAL T-1 3M M 3-PIN COM-CATH 627/565nm TH
5	41	18-22-0003	5 EA	D1 D4 D7 D8 D12			LED YELLOW SUPER BRIGHT 2MM x 1.25MM SM
5	42	21-18-0002	4 EA	BR2 BR3 BR4 BR5			TERMINAL SCREW PCB MOUNT RIGHT ANGLE SNAP-IN 6-32 THREAD
5	43	21-20-0018	1 EA	JP1_A			HEADER 12 PIN SIL 2.54MM MALE SHROUDED KEYED VERTICLE TH
5	44	21-26-6376	1 EA	JP4			CABLE 12 2.54MM 90.0MM BARE-ENDS
5	45	21-26-6377	1 EA	JP3			CABLE RIBBON 10-PIN 24 AWG 2.54MM 65.0MM BARE-ENDS
5	46	24-31-1105	5 EA	SW1 SW2 SW3 SW4 SW5			SWITCH TACT 6MM SQ 4 PIN TH
5	47	30-27-0365	12 EA	FOR LED D13 D14 D16 D17 D18 D19 D20 D21 D22 D23 D24 D28			SPACER LED 0.2" DIA X 0.3" HIGH ABS BLK
5	48	35-00-0111	1 EA				PC3 MAIN/UI A21-2 SPIDER IV 30
5	49	45-01-0056	1 EA	U3			IC PROGRAMMED MCU SPIDER IV 3012 V1.03 A21-2
6	1	15-84-0936	1 EA	U3			IC MCU 16KB FLASH P89LPC936 TS SOP-28 SM
5	50	45-02-0055	1 EA	U4			IC PROGRAMMED FLASH V1.00 SPIDER4-3012 A21-2
6	1	15-78-0005	1 EA	U4			IC FLASH 512Kb SPI SERIAL SOIC-8 SM
4	27	50-02-0337	1 EA				PC3A POWER SUPPLY A21-2 SPIDER IV 30
5	1	01-24-1000	3	R54 R61 R64			RES 100R 1% 0805
5	2	01-24-1002	2	R53 R55			RES 10.0K 1% 0805
5	3	01-24-1620	1	R63			RES 162R 1% 0805
5	4	03-10-0107	1	C37			CAP ELEC 100uF 10V 20% RADIAL 6.3/8/5
5	5	03-12-0107	2	C30 C34			CAP ELEC 100uF 16V 20% RADIAL 6.3/11/5
5	6	03-12-1338	1	C38			CAP ELEC 3300uF 16V 20% RADIAL 12.5/25/5

5	7	03-18-0106	2	C31-C32	CAP ELEC 10uF 50V 20% RADIAL 5/11/5	
5	8	03-18-0228	2	C35-C36	CAP ELEC 2200uF 50V 20% RADIAL 16/31.5/7.5	
5	9	03-52-0102	2	C50-C51	CAP X7R 1nF 50V 10% 0805	
5	10	03-52-0104	1	C1	CAP X7R 0.1uF 50V 10% 0805	
5	11	5/4/4002	8	D1-D4,D21-D24	DIODE SMALL-SIGNAL 100V 30A DO-41 AXIAL TH 1N4002	
5	12	6/28/8410	2	D13-D14	DIODE ZENER 10V 5% 350mW SOT-2 3 SM	
5	13	09-00-5401	1	Q4	TRANS PNP SMALL SIGNAL 2N5401 TH	
5	14	09-00-5551	1	Q3	TRANS NPN SMALL SIGNAL 2N5551 TH	
5	15	12-00-0317	1	U11	IC VREG ADJ 1.2V-37V 1.5 AMP TO-220 LM317 TH	A
5	16	21-20-1564	1	H4	HDR SIL PCB-MT 4 PIN x .156 MA LE VERT MNT FRIC LOCK	
5	17	21-20-1565	1	H5	HDR SIL PCB-MT 5 PIN x .156 MA LE VERT MNT FRIC LOCK	
5	18	21-30-0014	1		CBL SIL 7 PIN 22AWG 2.54MM x 7 6MM S/T	A
5	19	35-00-0112	1		PC3 POWER SUPPLY A21-2 SPIDER IV 30	B
4	28	50-02-0338	1	EA	PC3A POWER AMP A21-2 SPIDER IV 30	A
5	1	01-20-0R22	1	R51	RES METAL OXIDE 0.22R 2W 5% TH S/B 01-22-0R22	
5	2	01-22-02R2	1	R52	RES METAL OXIDE 2.2R 2W 5% TH	
5	3	1/24/3241	1	R2	RES 3.24K 1% 0805	
5	4	1/24/3921	1	R43	RES 3.92K 1% 0805	
5	5	1/24/7502	1	R46	RES 75.0K 1% 0805	
5	6	03-18-0106	1	C21	CAP ELEC 10uF 50V 20% RADIAL 5/11/5	
5	7	03-18-0107	2	C2 C29	CAP ELEC 100uF 50V 20% 105C LOW Z 0.2R RADIAL 8/20/5	
5	8	03-52-0104	3	C22 C24 C26	CAP X7R 0.1uF 50V 10% 0805	
5	9	12/30/2050	1	U8	IC POWER AMP 32W TDA2050 TO-22 0/5 TH	
5	10	35-00-0113	1		PC3 POWER AMP A21-2 SPIDER IV 30	C
4	29	50-02-0339	1	EA	PC3A HEADPHONE RJ45 A21-2 SPIDERIV	A
5	1	01-21-0102	2	R65-R66	RES METAL OXIDE 1K 1W 5% TH	
5	2	01-24-1002	1	R43	RES 10.0K 1% 0805	
5	3	03-52-0102	6	C39-C41,C44-C46	CAP X7R 1nF 50V 10% 0805	
5	4	03-52-0104	2	C42-C43	CAP X7R 0.1uF 50V 10% 0805	
5	5	06-34-0031	3	D25-D27	DIODE GEN PUR DUAL 120V 600mA 50ns SOT-23 SM	
5	6	11/10/2012	7	L3-L7,L11-L12	FERRITE BEAD 600R @ 100MHz 300 mA 0805 SM	
5	7	21-00-6616	1	J3	JACK 1/4" TRS PCB MOUNT 6 PIN HORIZONTAL TH	B
5	8	21-16-0045	1	J4	JACK RJ-45 MOD 8/8 RT/A FEMALE PCB 50AU	
5	9	30-18-3030	2	GF2-GF3	CLIP GROUND PCB .30 x .30 x .07	
5	10	35-00-0111-2	1		PC3 HEADPHONE RJ45 A21-2 SPIDER IV 30 REV B	C
4	30	50-02-0340	1	EA	PC3A GUITAR IN MP3 A21-2 SPIDER IV 30	A
5	1	01-24-1001	2	R47 R55	RES 1.00K 1% 0805	
5	2	01-24-1004	1	R54	RES 1.00M 1% 0805	
5	3	01-24-1502	1	R53	RES 15.0K 1% 0805	
5	4	1/24/3321	1	R61	RES 3.32K 1% 0805	
5	5	03-52-0100	2	C167-C168	CAP X7R 10pF 50V 10% 0805	
5	6	03-52-0470	1	C28	CAP X7R 47pF 50V 10% 0805	
5	7	03-52-0473	2	C32 C51	CAP X7R 47nF 50V 10% 0805	
5	8	06-34-0031	1	D34	DIODE GEN PUR DUAL 120V 600mA 50ns SOT-23 SM	
5	9	11/10/2012	3	L1-L2,L8	FERRITE BEAD 600R @ 100MHz 300 mA 0805 SM	
5	10	12-54-0072	1	U14	IC OP AMP DUAL TL072 SM	
5	11	21-00-6616	1	J1	JACK 1/4" TRS PCB MOUNT 6 PIN HORIZONTAL TH	B
5	12	21-12-0035	1	J2	JACK 3.5MM STEREO 5 PIN CRIMPE D LEADS NON-THREADED	
5	13	21-18-0002	1	BR1	TERMINAL SCREW PCB MOUNT RIGHT ANGLE SNAP-IN 6-32 THREAD	

