

7

6

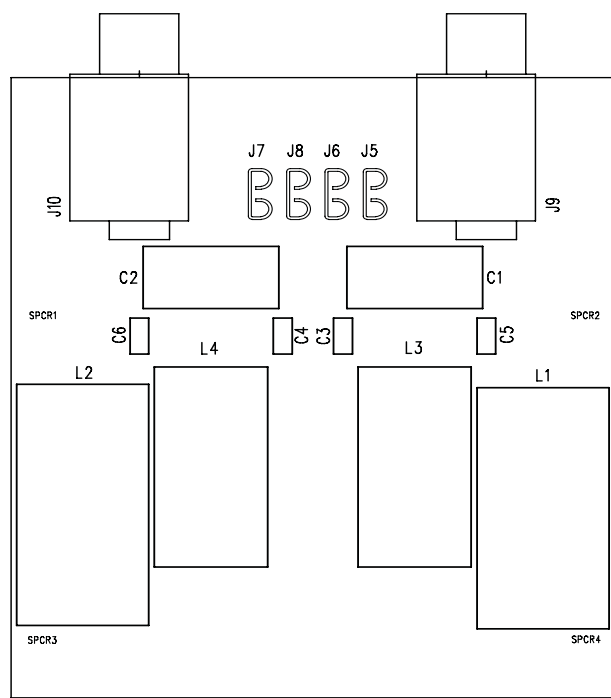
5

4

3

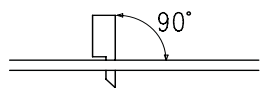
1

# ASSEMBLY TOP



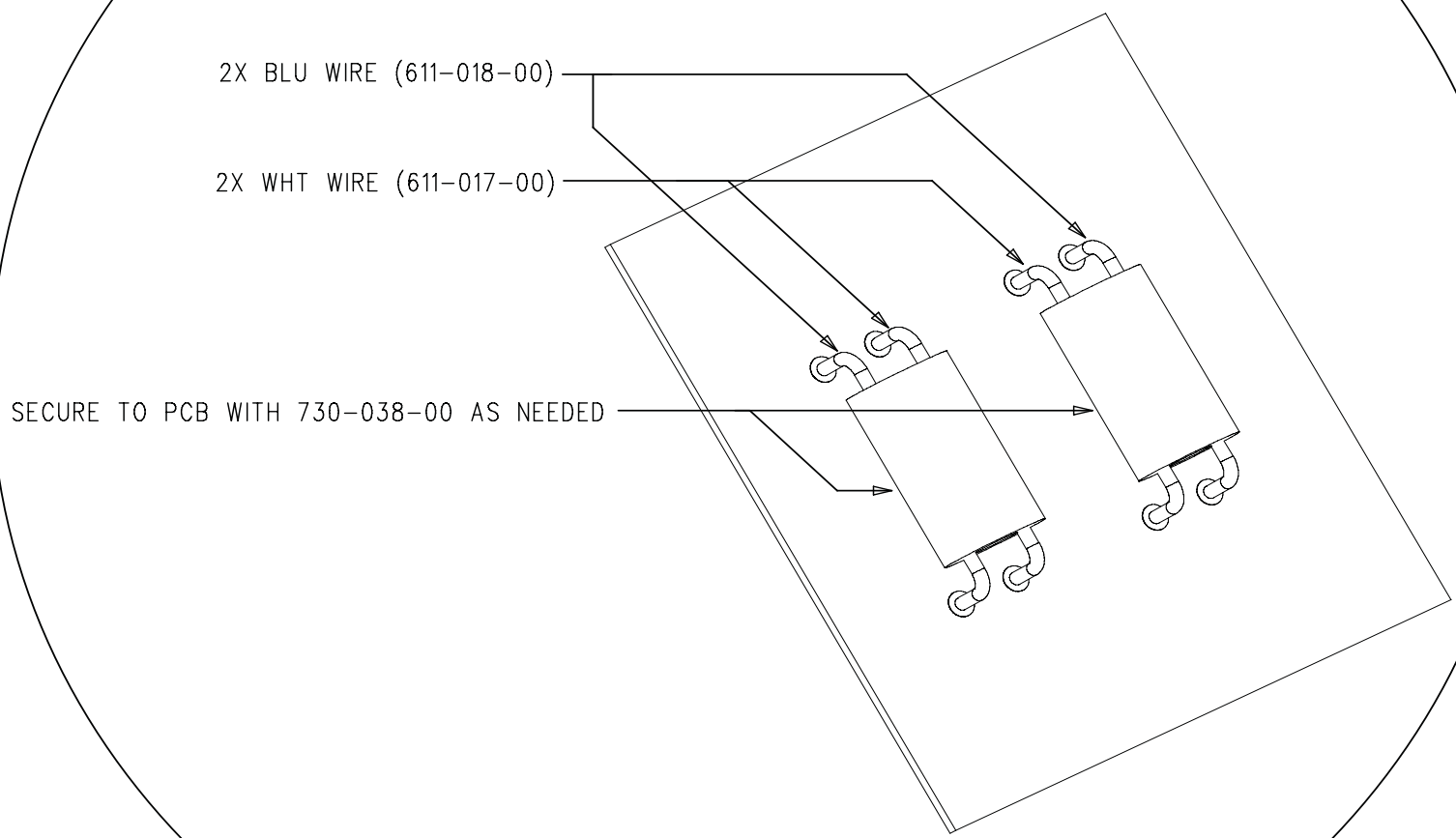
LOUD TECHNOLOGIES INC. | 0029731-00  
REV ADD

NOTE: THE FEMALE FASTON CONNECTORS (4X TOP, 4X BOTTOM)  
NEED TO BE MOUNTED AS "STRAIGHT" AS IS POSSIBLE.



# CHOKE ASSEMBLY DETAIL (L4 & L3)

WIRES RUN STRAIGHT THROUGH AND DO NOT CROSS



<small>UNLESS OTHERWISE SPECIFIED DIMENSIONS ARE IN INCHES TOLERANCES ARE: FRACTIONS: DECIMALS: ANGLES: ± NA .XX ± NA ± NA .XXX ± NA</small>	APPROVALS	DATE	<p>LOUD Technologies Inc. 16220 WOOD-RED RD NE WOODINVILLE, WA 98072</p>	
	DRAWN: mfp	01-24-08		
	CHECKED:			
	MP ENGINEERING:			
	MATERIAL:			
FINISH:	MANUFACTURING:		PCW ASSY, EMI FILTER PPM POWERED BOX MIXERS	
	MFG ENGINEERING:			
	ISSUED:		DWG. NO. 0029732-00	REV. AXX
		DWG FILE:	SHEET 1 OF 2	

©2008 LOUD TECHNOLOGIES INC.  
ALL RIGHTS RESERVED  
THE INFORMATION CONTAINED HEREIN  
IS PROPRIETARY AND CONFIDENTIAL  
PROPERTY OF LOUD TECHNOLOGIES INC.

7

6

5

4

3

1

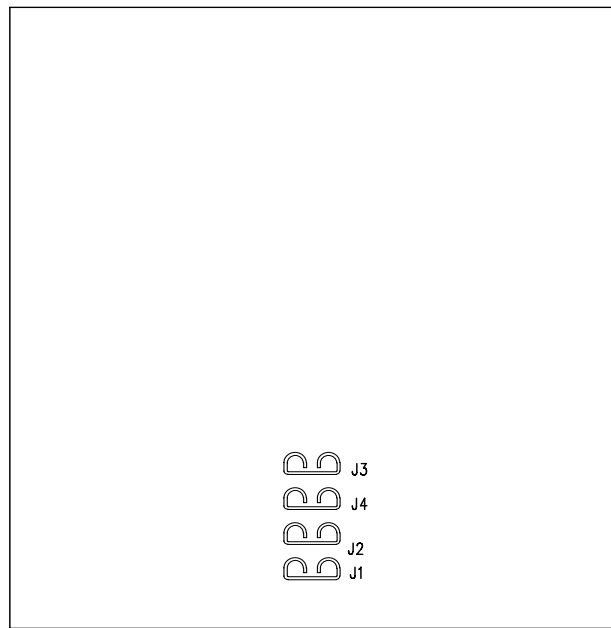
D

D

### ASSEMBLY BOTTOM

C

C



B


B

LOUD TECHNOLOGIES INC. | 0029732-00  
REV A00

A

A

©2008 LOUD TECHNOLOGIES INC.  
ALL RIGHTS RESERVED  
THE INFORMATION CONTAINED HEREIN  
IS PROPRIETARY AND CONFIDENTIAL  
PROPERTY OF LOUD TECHNOLOGIES INC.

<small>UNLESS OTHERWISE SPECIFIED DIMENSIONS ARE IN INCHES TOLERANCES ARE: FRACTIONS: DECIMALS: ANGLES: ± NA .XX ± NA ± NA .XXX ± NA</small>	APPROVALS	DATE	 <b>LOUD Technologies Inc.</b> <small>15220 WOOD-RED RD NE WOODINVILLE, WA 98072</small>	
	DRAWN:			<b>PCB ASSY, EMI FILTER</b> <b>PPM POWERED BOX MIXERS</b>
	CHECKED:			
	MATERIAL:	MP ENGINEERING:		
FINISH:	MANUFACTURING:		<small>DWG. NO.</small> <b>0029732-00</b> <small>REV.</small> <b>AXX</b>	
DO NOT SCALE DRAWING	ISSUED:		<small>DWG FILE:</small> SHEET <b>2</b> OF <b>2</b>	

7

6

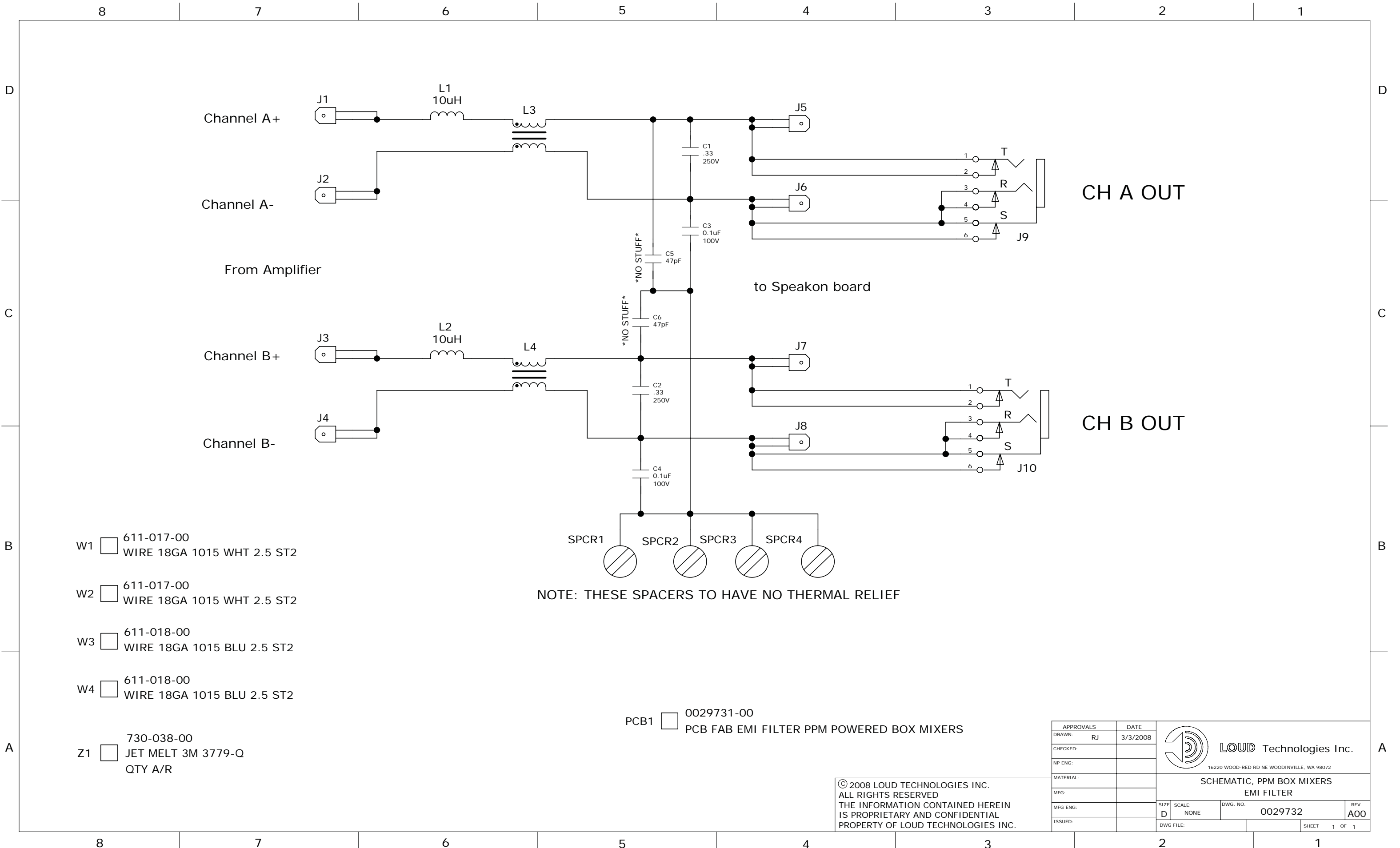
5

4

3

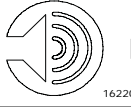
2

1



APPROVALS		DATE
DRAWN:	RJ	3/3/2008
CHECKED:		
NP ENG:		
MATERIAL:		
MFG:		
MFG ENG:		
ISSUED:		

 <b>LOUD Technologies Inc.</b> 16220 WOOD-RED RD NE WOODINVILLE, WA 98072		SCHEMATIC, PPM BOX MIXERS	
		EMI FILTER	
SIZE	SCALE:	DWG. NO.	REV.
D	NONE	0029732	A00
DWG FILE:		SHEET 1 OF 1	

© 2008 LOUD TECHNOLOGIES INC.  
ALL RIGHTS RESERVED  
THE INFORMATION CONTAINED HEREIN  
IS PROPRIETARY AND CONFIDENTIAL  
PROPERTY OF LOUD TECHNOLOGIES INC.