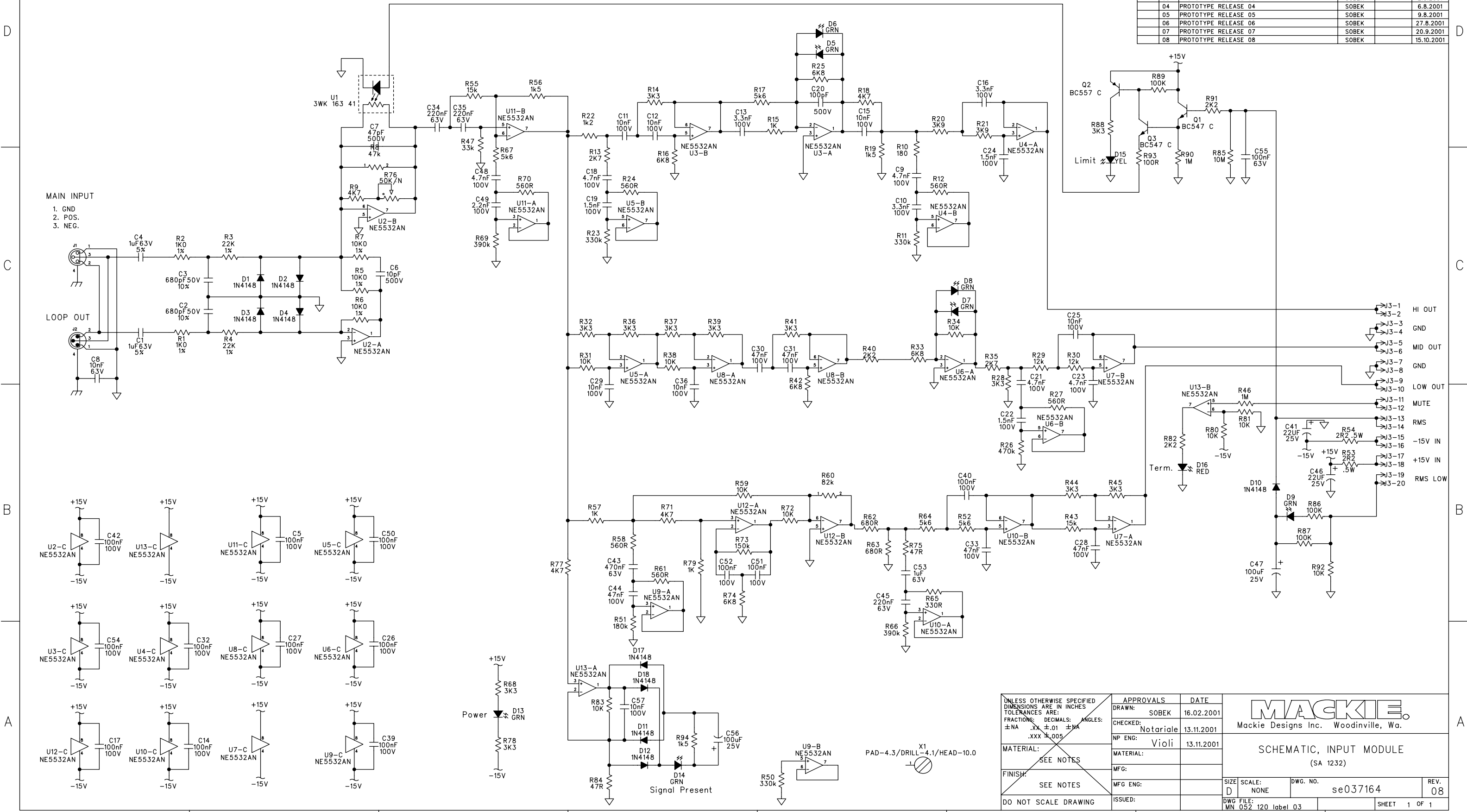


ECO#	REV:	DESCRIPTION	REV. BY:	APP. BY:	DATE
01		PROTOTYPE RELEASE 01	SOBEK		16.2.2001
02		PROTOTYPE RELEASE 02	SOBEK		20.2.2001
03		PROTOTYPE RELEASE 03	SOBEK		2.3.2001
04		PROTOTYPE RELEASE 04	SOBEK		6.8.2001
05		PROTOTYPE RELEASE 05	SOBEK		9.8.2001
06		PROTOTYPE RELEASE 06	SOBEK		27.8.2001
07		PROTOTYPE RELEASE 07	SOBEK		20.9.2001
08		PROTOTYPE RELEASE 08	SOBEK		15.10.2001



MAIN INPUT  
1. GND  
2. POS.  
3. NEG.

LOOP OUT

HI OUT  
GND  
MID OUT  
GND  
LOW OUT  
MUTE  
RMS  
-15V IN  
+15V IN  
RMS LOW

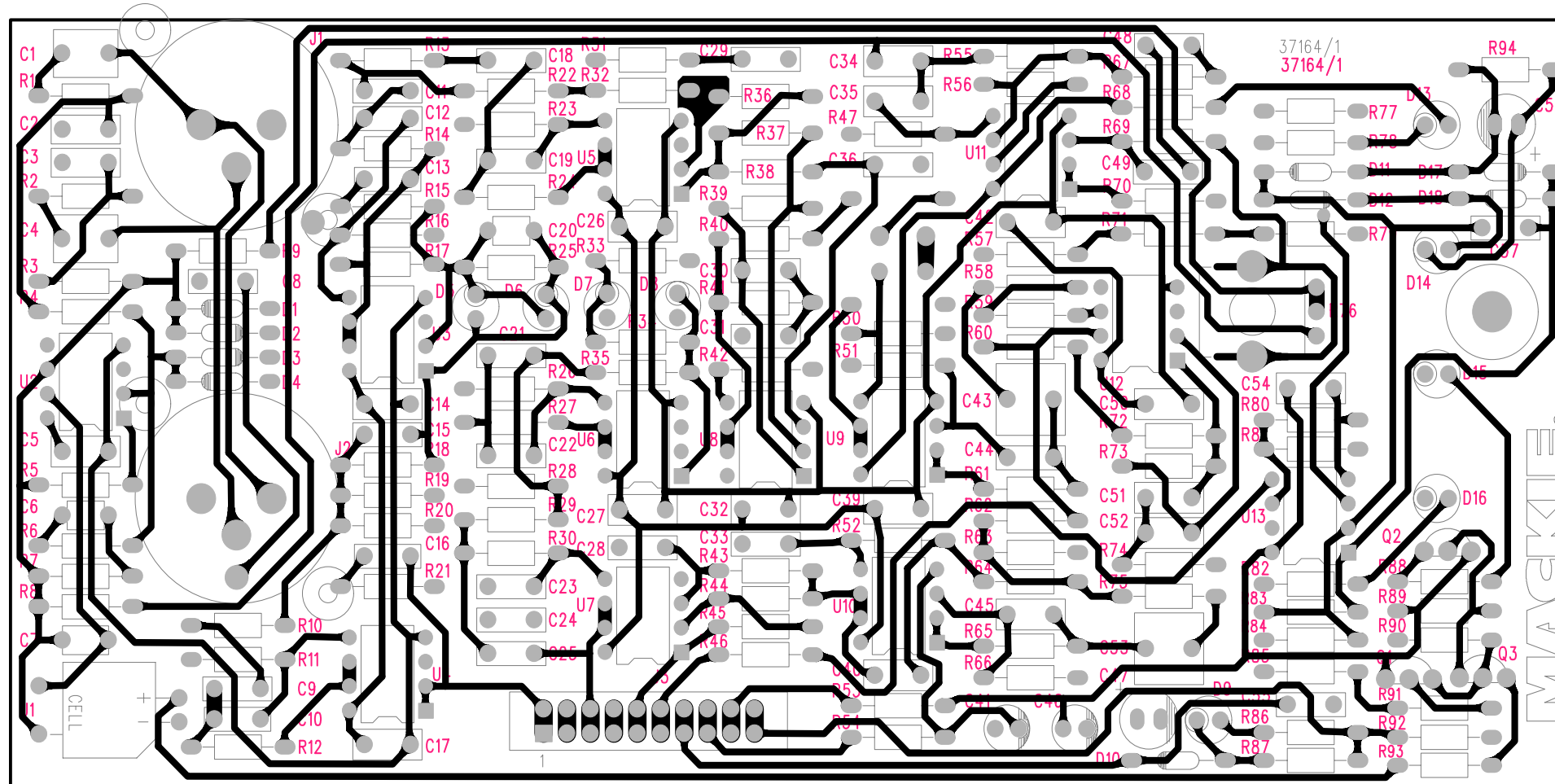
UNLESS OTHERWISE SPECIFIED DIMENSIONS ARE IN INCHES		TOLERANCES ARE:	
FRACTIONS:	DECIMALS:	ANGLES:	
±NA	.XX ±.01	±NA	.XXX ±.005
MATERIAL: SEE NOTES		FINISH: SEE NOTES	
DO NOT SCALE DRAWING		ISSUED:	

APPROVALS	DATE
DRAWN: SOBEK	16.02.2001
CHECKED: Notariale	13.11.2001
NP ENG: Violi	13.11.2001
MATERIAL:	
MFG:	
MFG ENG:	

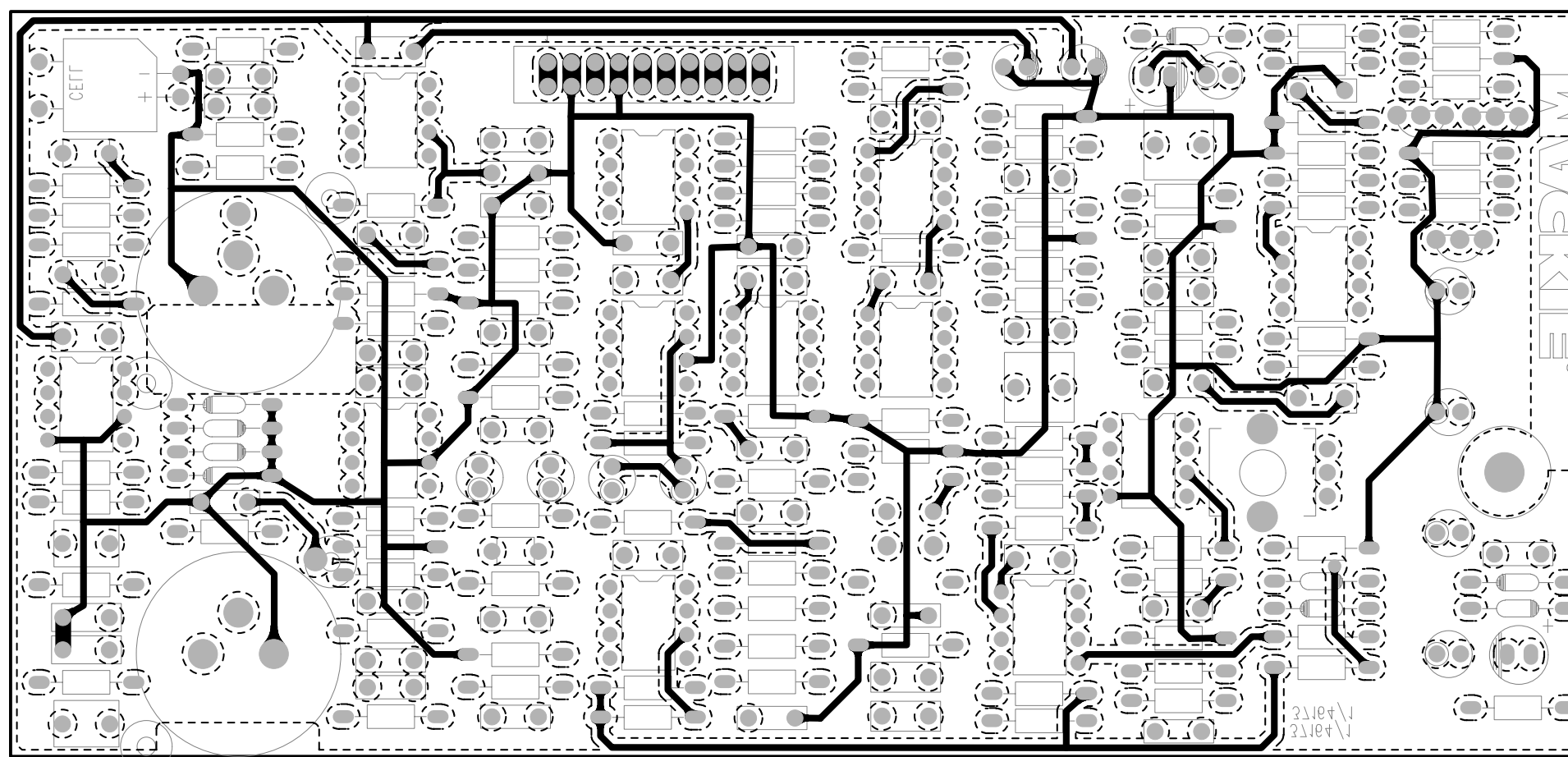
**MACKIE**  
Mackie Designs Inc. Woodinville, Wa.

**SCHEMATIC, INPUT MODULE**  
(SA 1232)

SIZE: D SCALE: NONE DWG. NO. se037164 REV. 08  
DWG FILE: MN 052 120 label 03 SHEET 1 OF 1



Top Surface



Bottom Surface  
Dotted lines are the copper pour layer boundaries