

E-68

INTELLIGENT KEYBOARD

SERVICE NOTES

First Edition

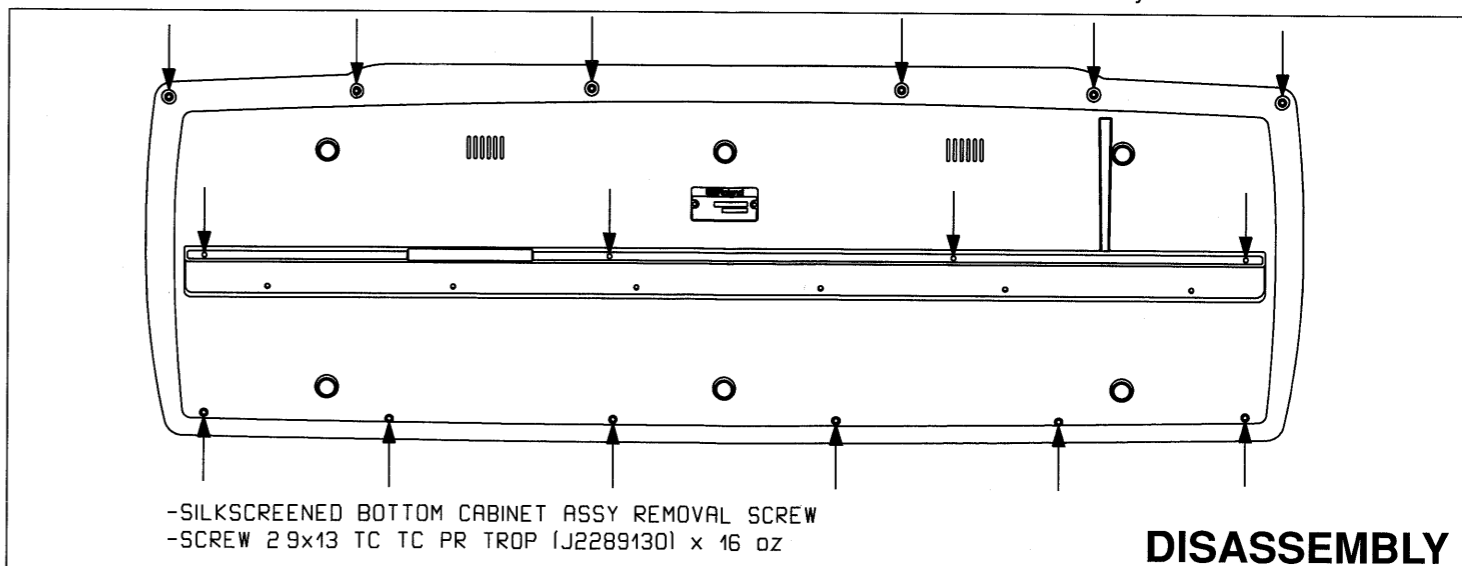
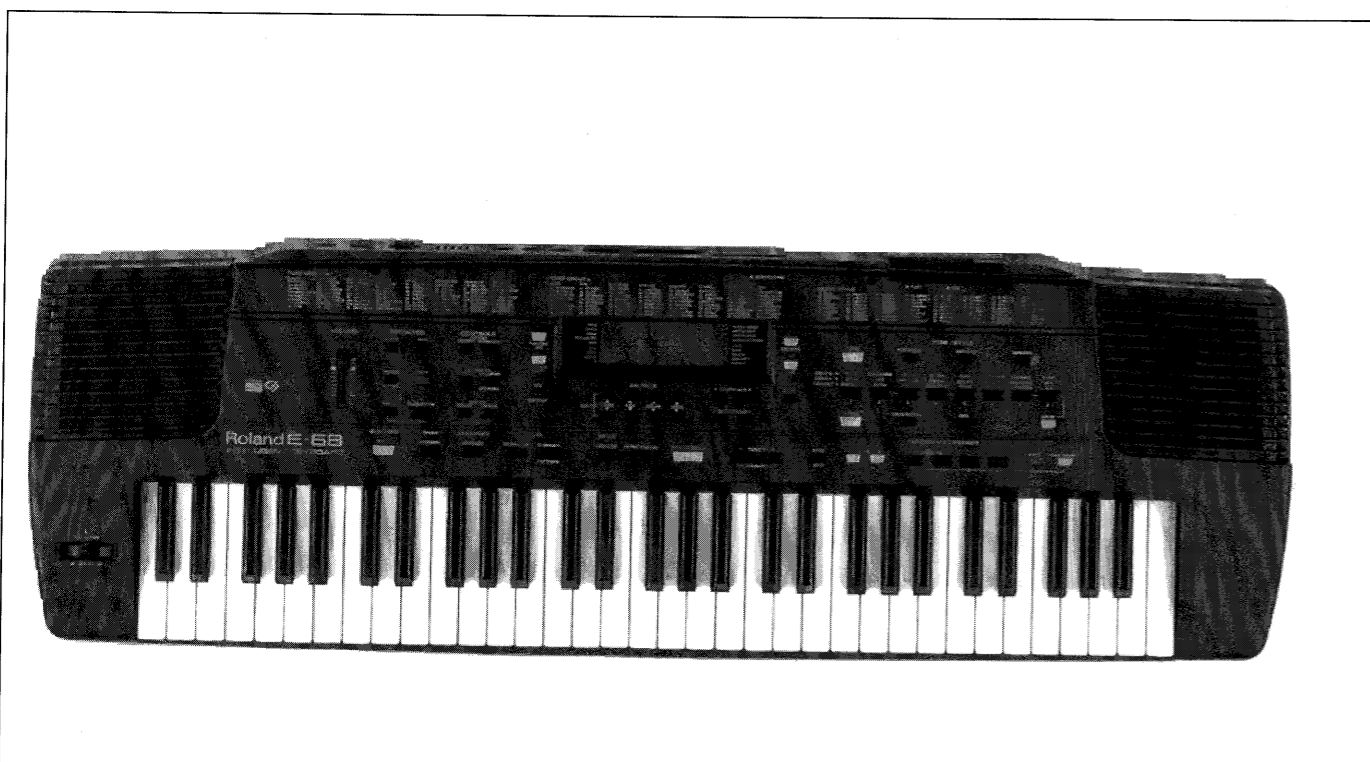
Issued by RES

TABLE OF CONTENTS



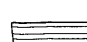




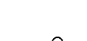
	Page
SPECIFICATIONS	1
DISASSEMBLY	1
LOCATION OF CONTROLS	2
EXPLODED VIEW & REAR VIEW	3
KEYBOARD PARTS LIST	4
BLOCK DIAGRAM	4
RIGHT CONTROL PCB ASSY & CIRCUIT DIAGRAM	5
POWER & AMP. PCB ASSY & CIRCUIT DIAGRAM	6
LEFT CONTROL PCB ASSY	6
CIRCUIT DIAGRAM LEFT CONTROL PCB ASSY	7
MAIN PCB ASSY	8
CIRCUIT DIAGRAM MAIN PCB ASSY (DIGITAL & ANALOG SECTION)	9
RIGHT CONTACT PCB ASSY w/RUBBER CONTACT & CIRCUIT DIAGRAM	10
LEFT CONTACT PCB ASSY w/RUBBER CONTACT & CIRCUIT DIAGRAM	10
IDENTIFYING VERSION NUMBER / AUDIO TEST / RECOVERING FACTORY DATA	11
TRANSLATION FROM ENGLISH INTO JAPANESE	11
PARTS LIST	12

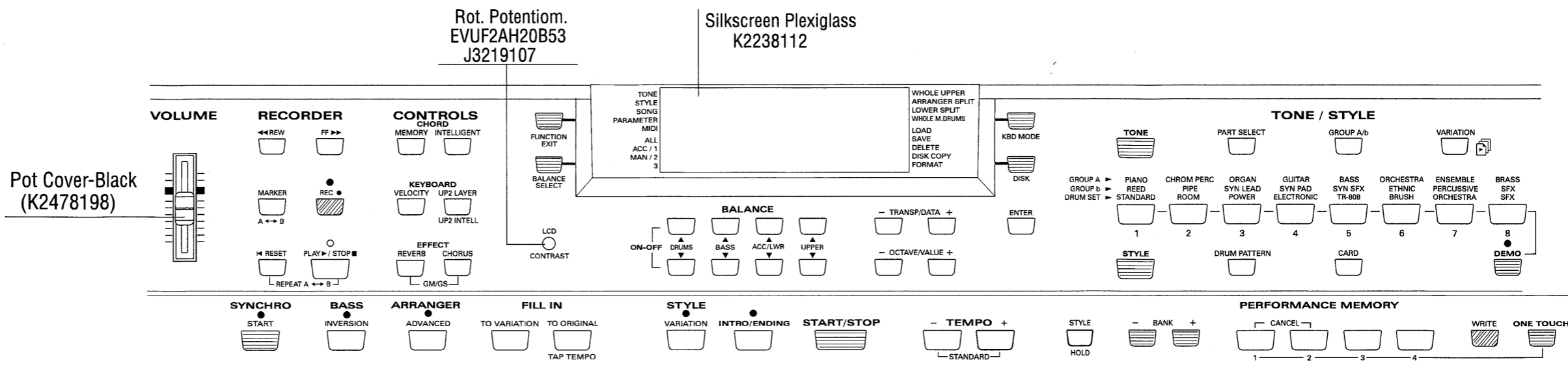
SPECIFICATIONS

- **MKeyboard**.....:61 keys,velocity sensitive
- **Sound Source**.....:Newly developed with TVF(GM/GS Format)
- **Maximum Polyphony**.....:24 Voices
- **Tones**.....:Enhanced variations tones 241 Tones+8 Drum Sets
- **Wave Memory**.....:3 Mbytes
- **Multitimbral Parts**.....:16
- **Built-in Music Styles**.....:64 Original + 64 Variations and Advanced version
- **Recorder**.....:1 Song in SMF type, recorded in memory
- **Demo Songs**.....:16
- **SMF Ram Memory**.....:96 Kbytes
- **Performances Memory**.....:64
- **One Touch settings**.....:4 settings for each of the 64 styles (total 256)
- **Built-in Digital Effects**.....:Reverb,Chorus
- **Display**.....:Large Multi-Function backlit CUSTOM LCD
- **Floppy Disk Driver**.....:Load/Save Song SMF Format 0 and 1,Perf.Memories
- **Card Slot**.....:TN-SC2 Style Card, Ram Card
- **Jack and Connections**.....:Phones
:Output (R,L/Mono)
:Sustain
:MIDI (In,Out)
:Coputer Interface
:DC In
- **Controls**.....:Master Volume (Slider)
:Tempo/Data (Button)
:Pitch Bender (Lever)
:Modulation (Lever)
- **Stereo Output Level**.....:-2.7dBm Master Vol. :Max
:Reverb :Off
:Chorus :Off
:Tone :Sine Wave
:Play :C4 Key
- **Stereo Output Impedence**...:1,6K Ohm
- **Speakers**.....:Full Range 12cm(5") x 2
- **Amplifier**.....:5W + 5W
- **Power Supply**.....:12V,1.6A(ACJ Adapter)
- **External Dimension**.....:1040(W) x 347(D) x115 (H) mm
- **Weight**.....:7,4kg
- **Accessory**.....:Owner's Manual (I/E/D/F) (K6018257)
:Owner's Manual (J/E/D/F) (K6018255)
:MIDI Guide (K6018109)
:MIDI Implementation (K6018258)
:Music Rest (K2198102)
:Music Score Holder (22208320)
:Power Adaptor ACJ 100V (100V) (22448613)
:Power Adaptor ACJ 120V (117V) (22448612)
:Power Adaptor ACJ 230V (230V) (2244861101)
:Power Adaptor ACJ 230VE (230VE) (2244861001)
:Power Adaptor ACJ 240VA (240VA) (22448614)
- **Option** :DP-2, DP-6, or FS-5U Foot Switch, TN-SC2 Music Style Cards



LOCATION OF CONTROLS

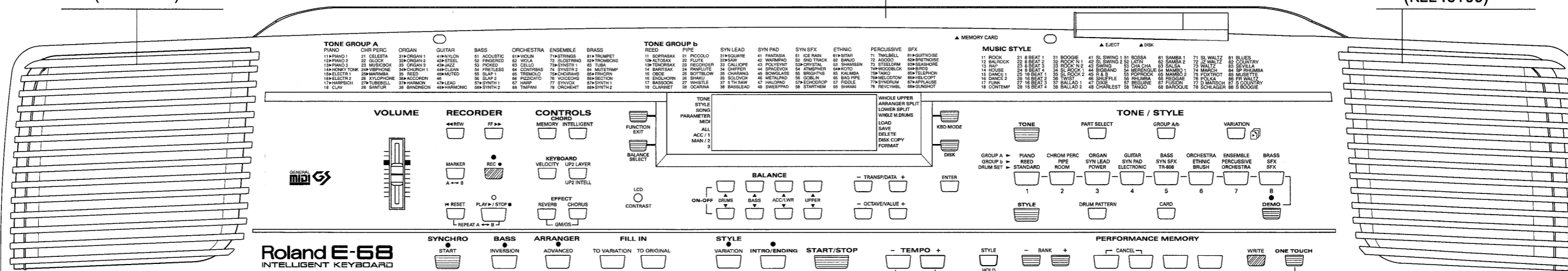
-  Black Button-17,3x8,3
Cod. K2478230
-  Black Button-11,7x6,8
Cod. K2478228
-  Grey Button-24x5
Cod. K2478248
-  Grey Button-17x8
Cod. K2478247
-  Grey Button-11x6
Cod. K2478246
-  Red Button-11,7x6,8
Cod. K2478249
-  Led Diode TLHG4401-Green
(15029320RI)
-  Led Diode TLHR4401-Red
(15029284RI)



Grill for Loudspeaker Left (K2248107)

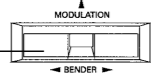
Silk. +Varn.Top CBN Assy 7697905000

Grill for Loudspeaker Right (K2248106)



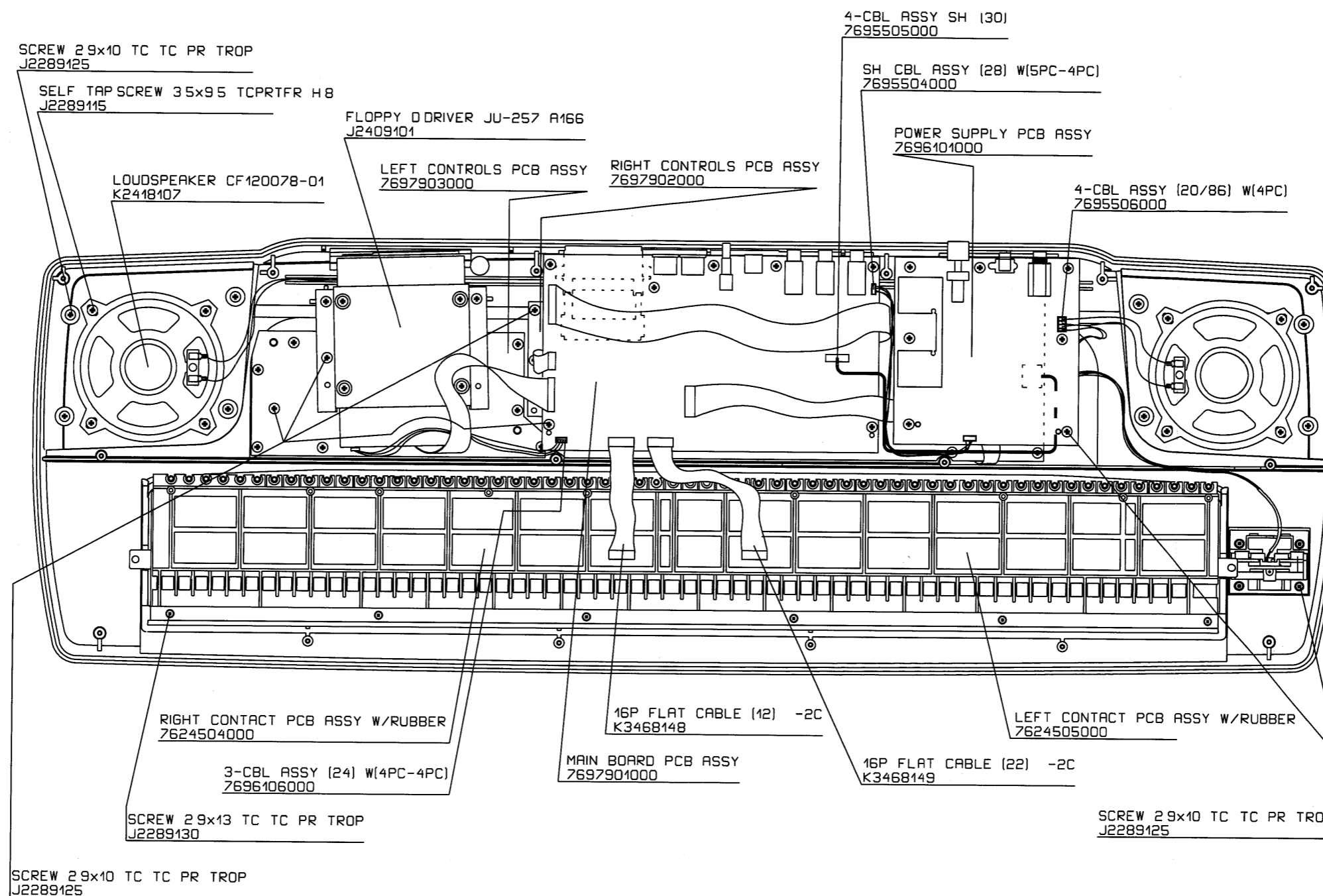
Roland E-68
INTELLIGENT KEYBOARD

Pitch Bender W/Sensor+Cable K3278104

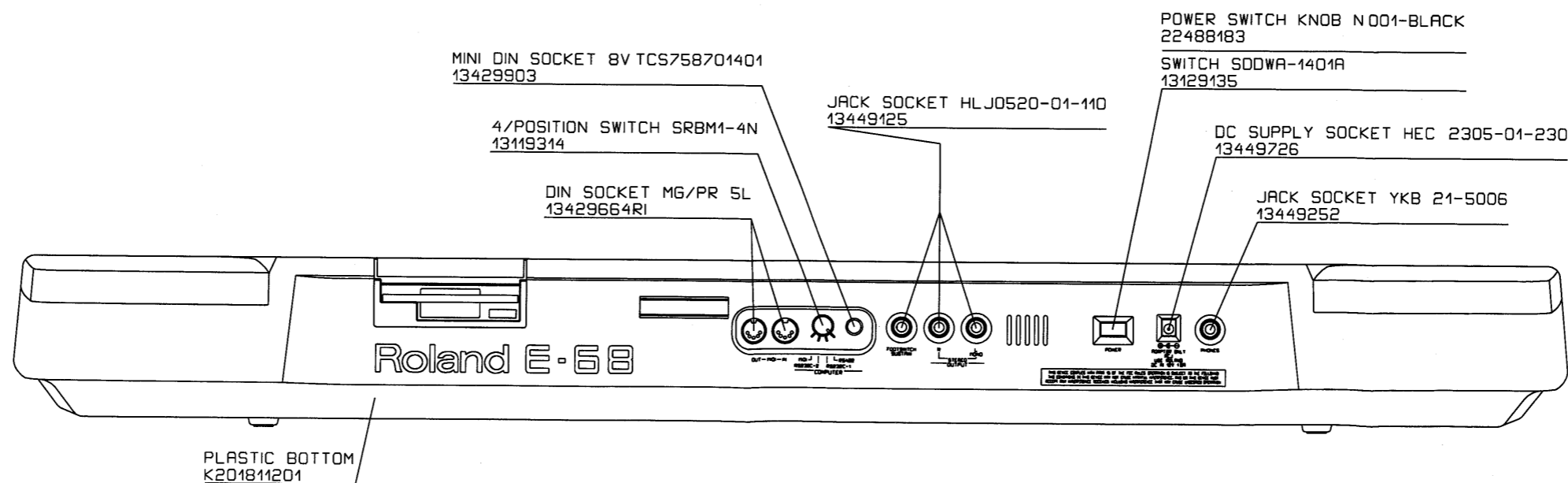


Keyboard Assy 7626921000

EXPLODED VIEW

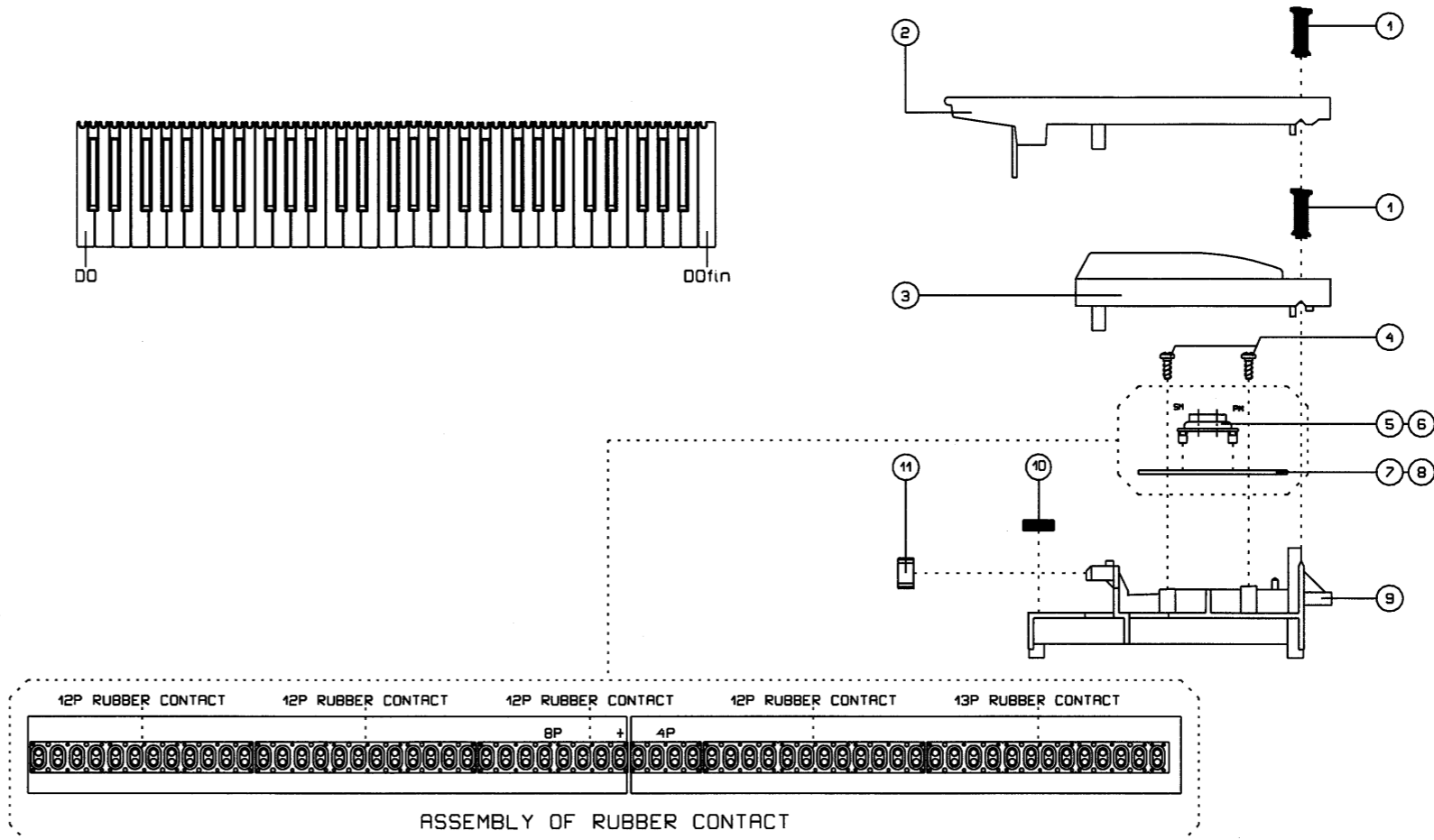


REAR VIEW

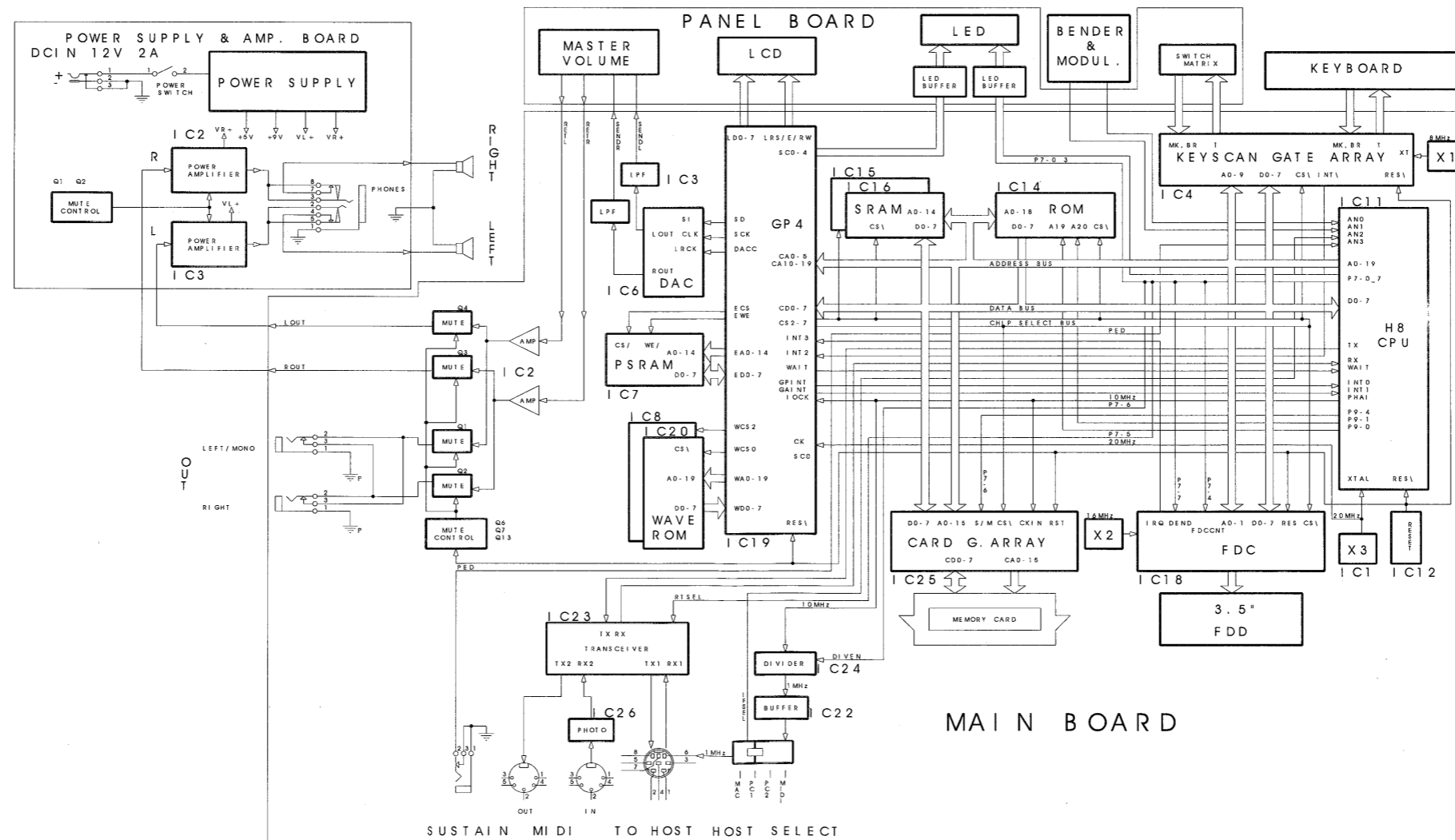


KEYBOARD PARTS LIST

Ref	Description	Code	Quantity	
1	DOUBLE HEADED SPRING	22478226	61	
2	WHITE KEY	DO	J2579423	5
		RE	J2579424	5
		MI	J2579425	5
		FA	J2579426	5
		SOL	J2579427	5
		LA	J2579428	5
		SI	J2579429	5
	DOfin	J2579430	1	
3	BLACK KEY	22578348	25	
4	SCREW 2.9x10 TC TC PR TROP	J2289425	34	
5	RUBBER CONTACT 12 POSITIONS	22485238	4	
6	RUBBER CONTACT 13 POSITIONS	22485239	1	
7	LEFT CONTACT PCB ASSY (WITH RUBBER CONTACT)	7624505000	1	
8	RIGHT CONTACT PCB ASSY (WITH RUBBER CONTACT)	7624504000	1	
9	KEYBOARD SUPPORT 61 KEYS	22818746	1	
10	ADHESIVE RUBBER 8 X 2.5 X 848	22358151	1	
11	RUBBER END STROKE	22458789	61	



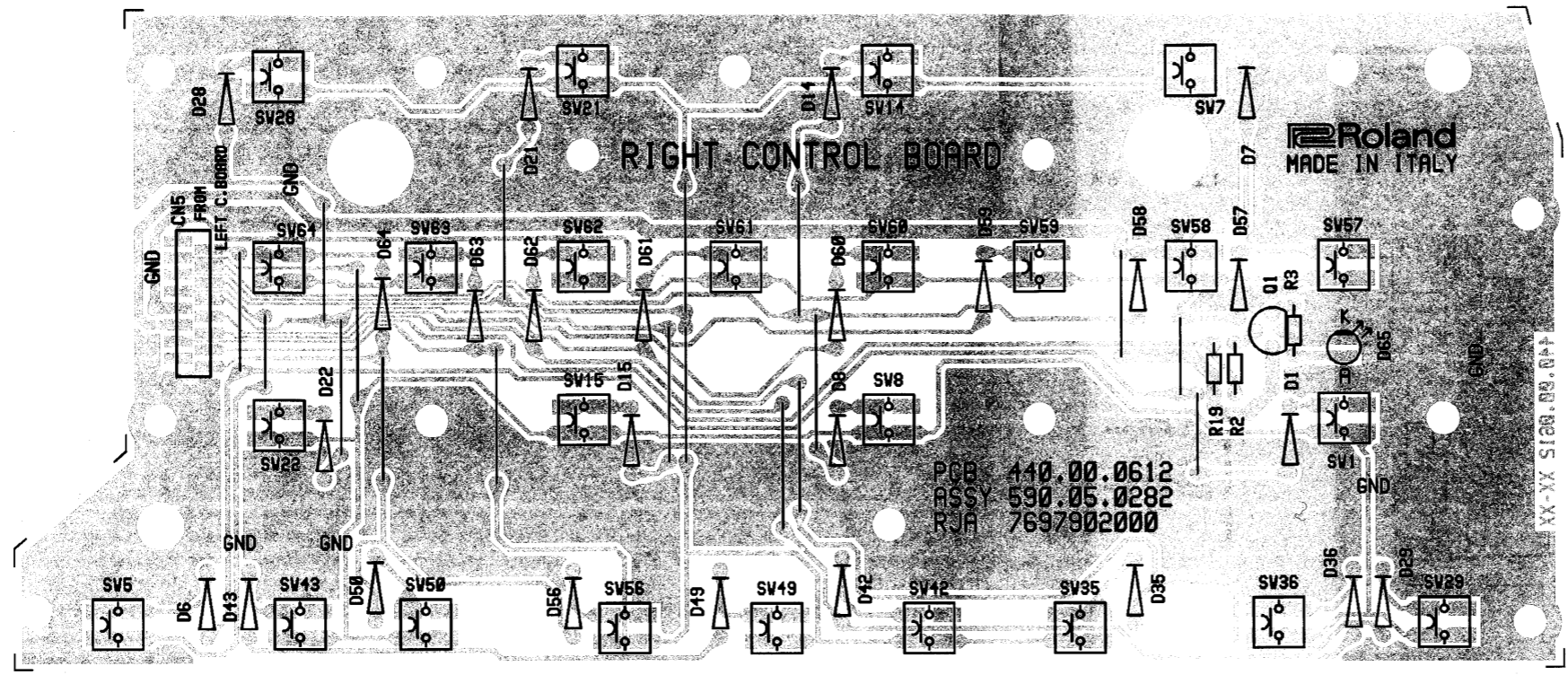
BLOCK DIAGRAM



1 2 3 4 5 6 7 8 9 10 11 12 13 14 15 16 17 18 19 20 21 22 23 24 25 26 27 28 29 30

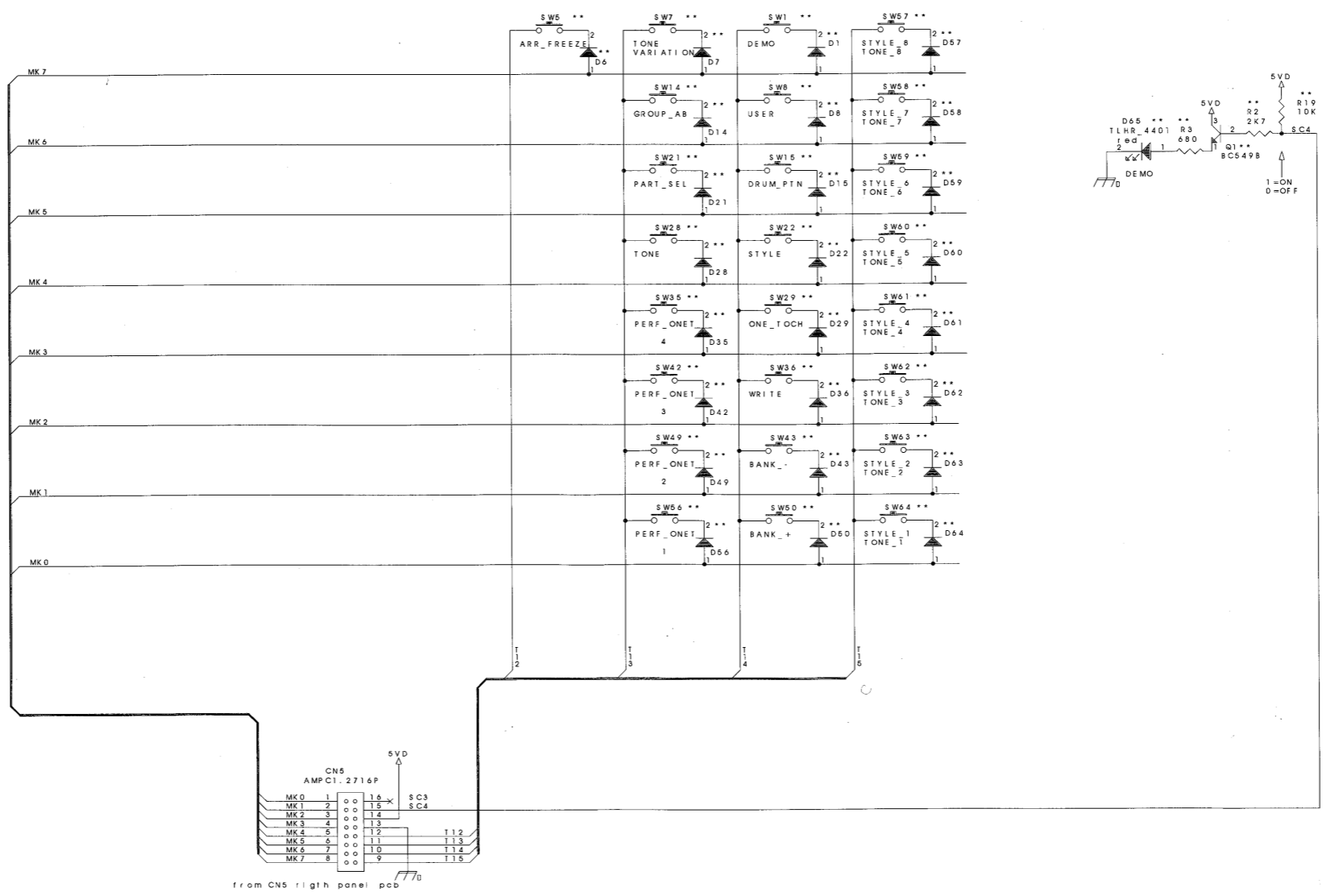
A
B
C
D
E
F
G
H
I
J
K
L
M
N
O
P
Q
R
S
T
U

RIGHT CONTROL PCB ASSY (ASSY 7697902000)



View from component side

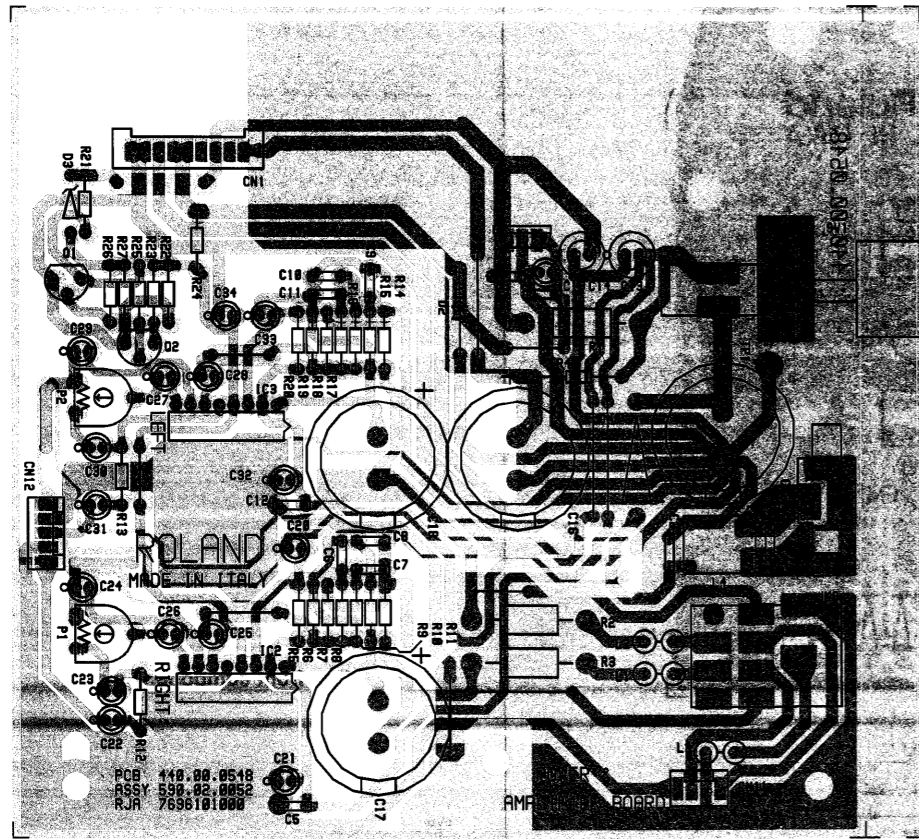
CIRCUIT DIAGRAM



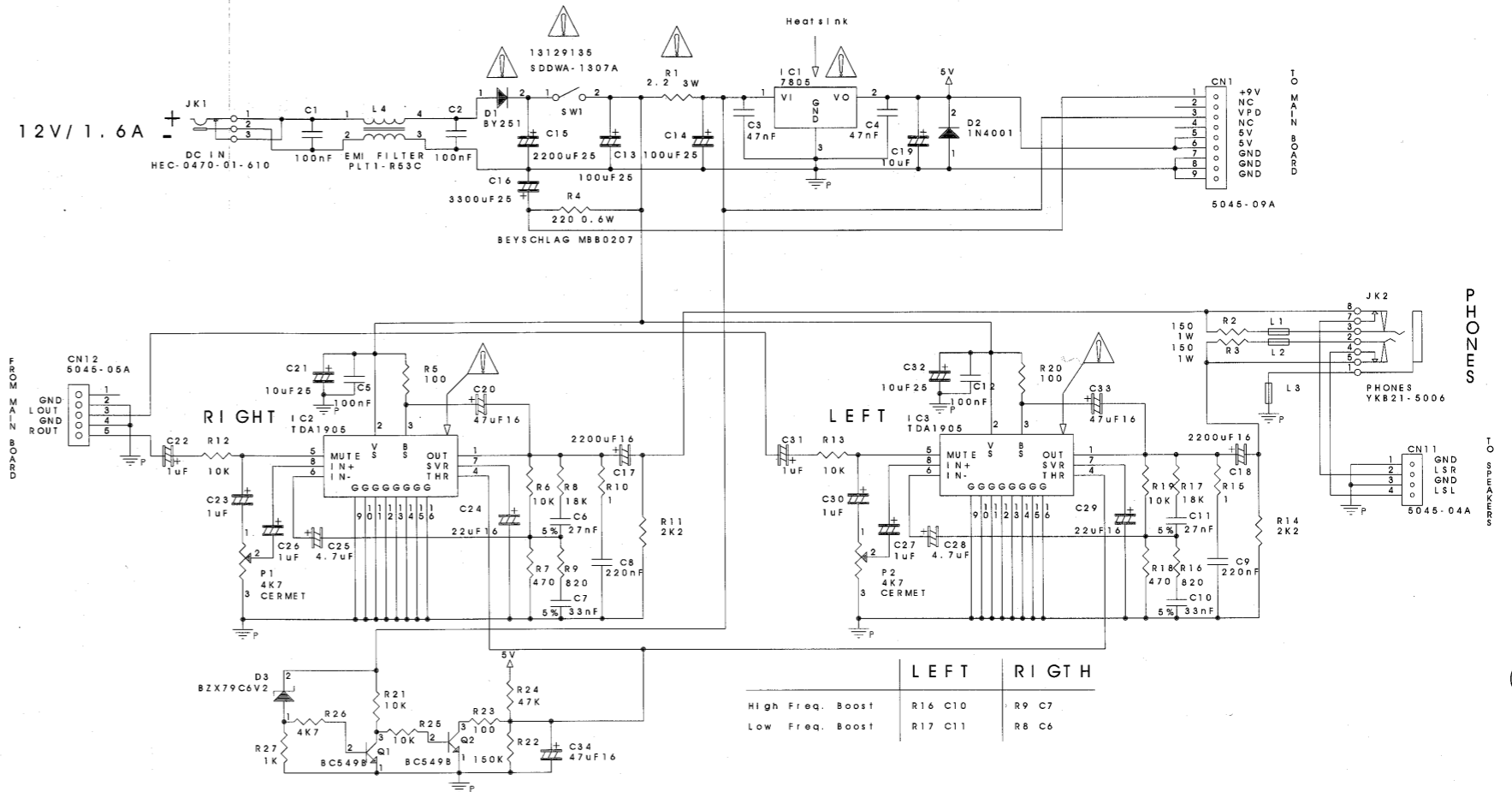
1 2 3 4 5 6 7 8 9 10 11 12 13 14 15 16 17 18 19 20 21 22 23 24 25 26 27 28 29 30

A POWER & AMPLIFIER PCB ASSY ASSY 7696101000

CIRCUIT DIAGRAM POWER & AMPLIFIER PCB ASSY

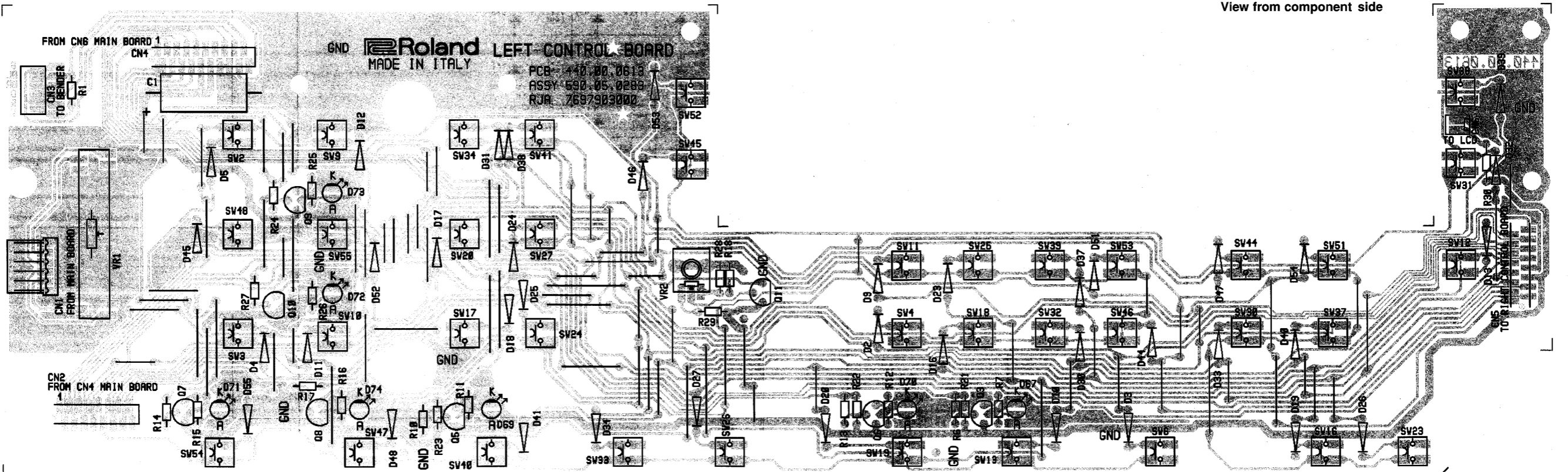


View from component side



L LEFT CONTROL PCB ASSY ASSY 7697903000

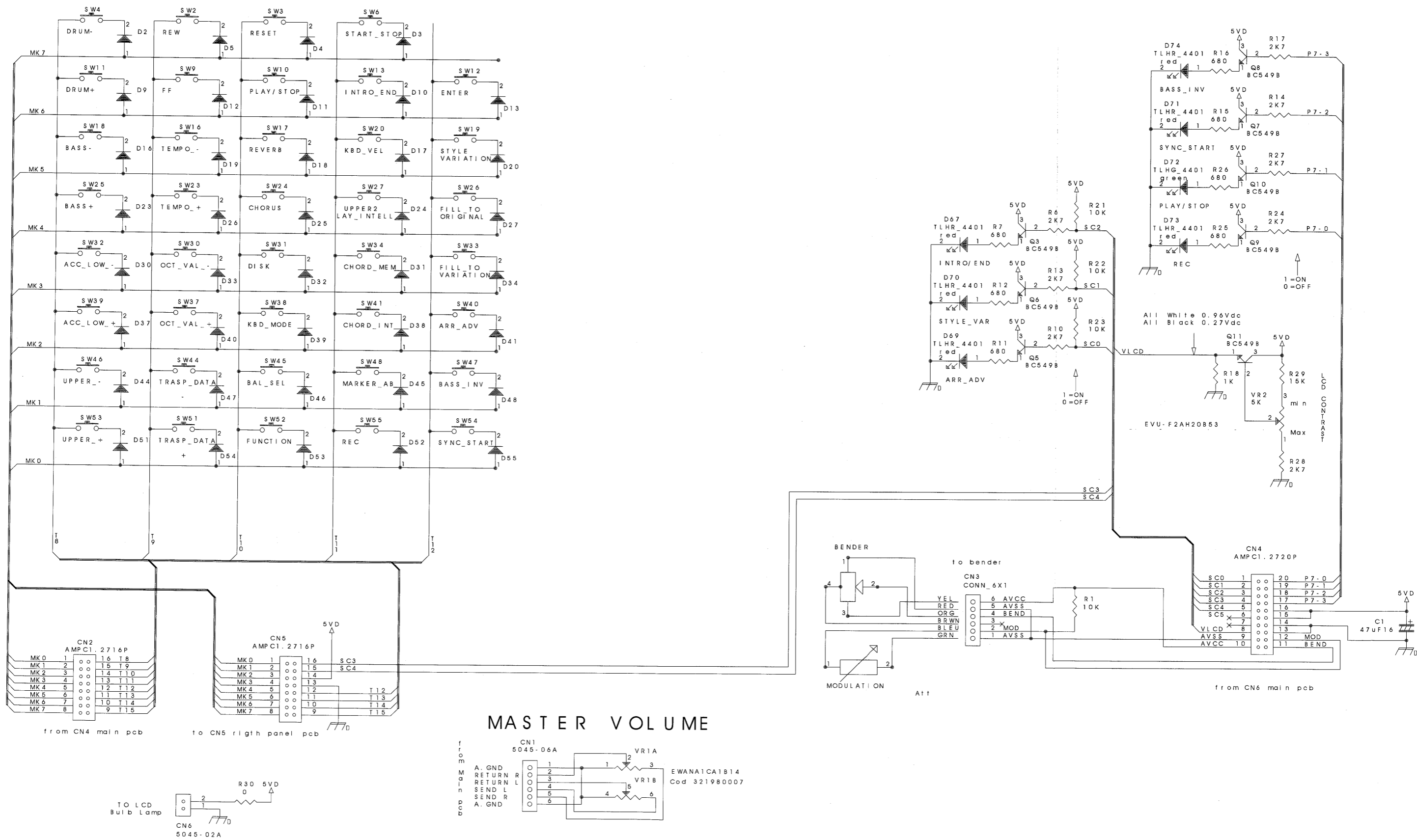
View from component side



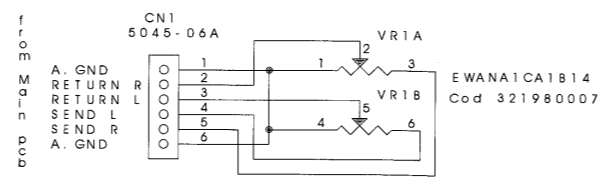
1 2 3 4 5 6 7 8 9 10 11 12 13 14 15 16 17 18 19 20 21 22 23 24 25 26 27 28 29 30

A
B
C
D
E
F
G
H
I
J
K
L
M
N
O
P
Q
R
S
T
U

CIRCUIT DIAGRAM (LEFT CONTROL PCB ASSY)



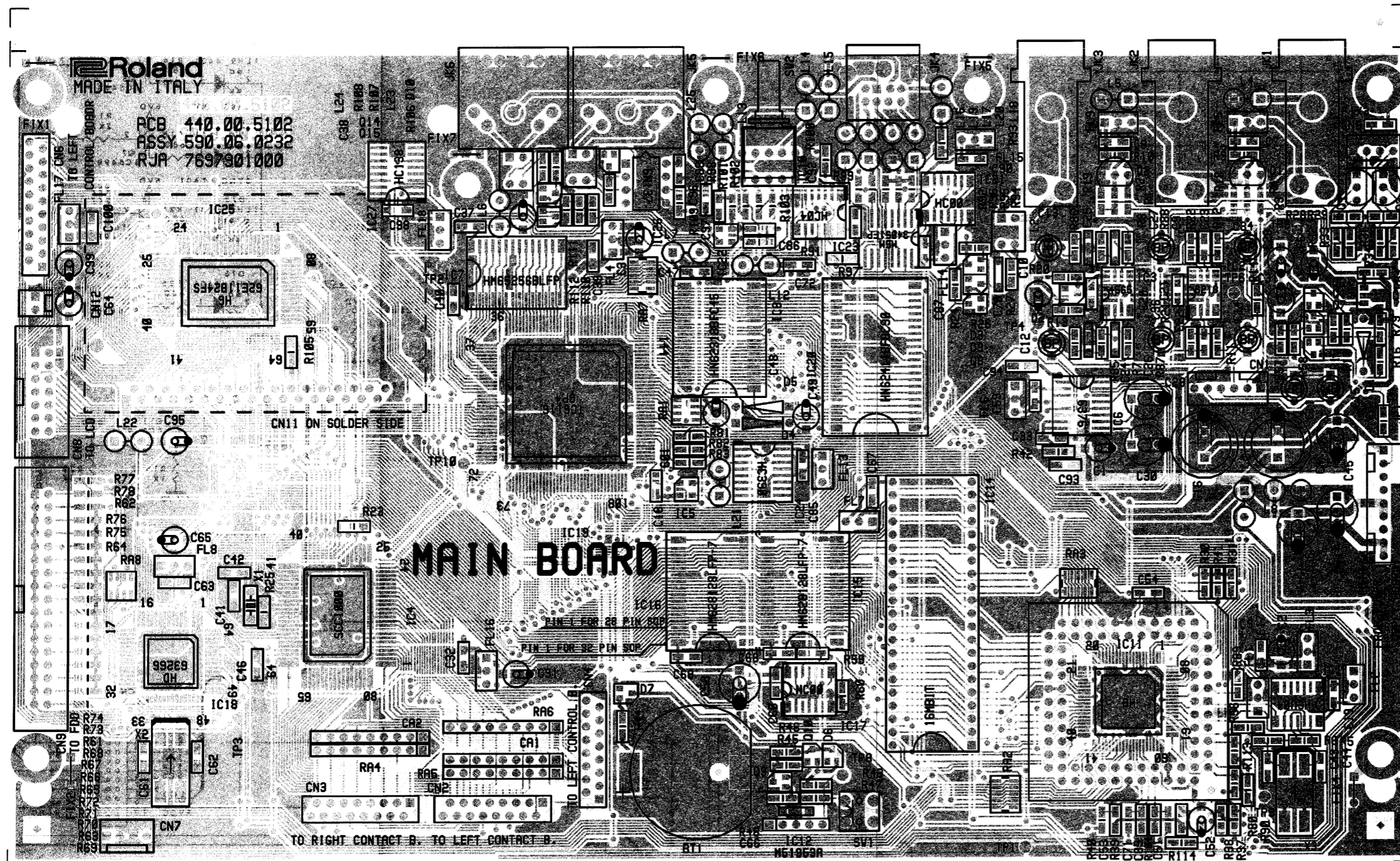
MASTER VOLUME



1 2 3 4 5 6 7 8 9 10 11 12 13 14 15 16 17 18 19 20 21 22 23 24 25 26 27 28 29 30

A MAIN PCB ASSY ASSY 7697901000

B
C
D
E
F
G
H
I
J
K
L
M
N
O
P
Q
R
S
T
U



For Nordic Countries

Apparatus containing Lithium batteries

ADVARSEL!

Lithiumbatteri - Eksplosionsfare ved fejlagtig håndtering. Udskiftning må kun ske med batteri af samme fabrikat og type. Levér det brugte batteri tilbage til leverandøren.

ADVARSEL!

Lithiumbatteri - Eksplosjonsfare. Ved utskifting benyttes kun batteri som anbefalt av apparatfabrikanten. Brukt batteri returneres apparatleverandøren.

VARNING!

Eksplosionsfara vid felaktigt batteribyte. Använd samma batterityp eller en ekvivalent typ som rekommenderas av apparattillverkaren. Kassera använt batteri enligt fabrikantens instruktion.

VAROITUS!

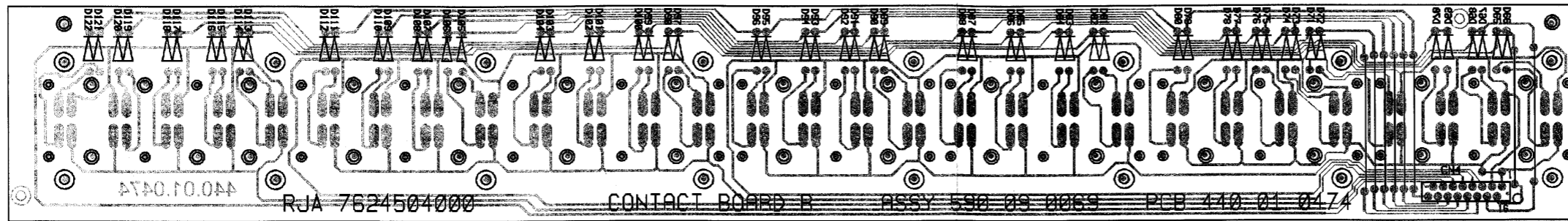
Paristo voi räjähtää, jos se on virheellisesti asennettu. Vaihda paristo ainoastaan laitevalmistajan suosittelemaan tyyppiin. Hävitä käytetty paristo valmistajan ohjeiden mukaisesti.

View from component side

1 2 3 4 5 6 7 8 9 10 11 12 13 14 15 16 17 18 19 20 21 22 23 24 25 26 27 28 29 30

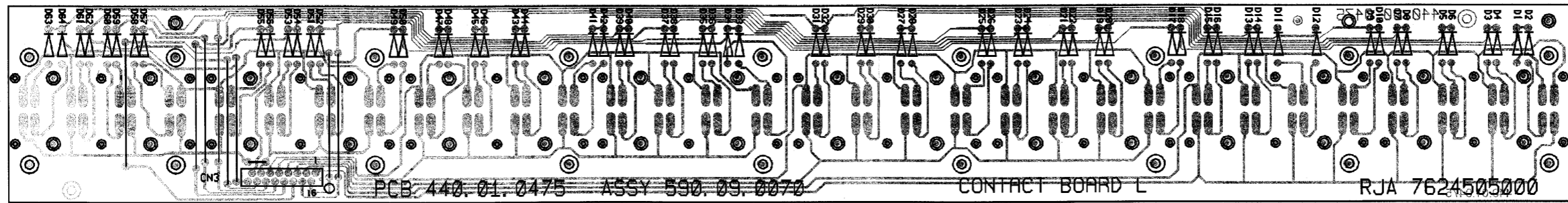
A
B
C
D
E
F
G
H
I
J
K
L
M
N
O
P
Q
R
S
T
U

RIGHT CONTACT PCB ASSY w/RUBBER ASSY 7624504000



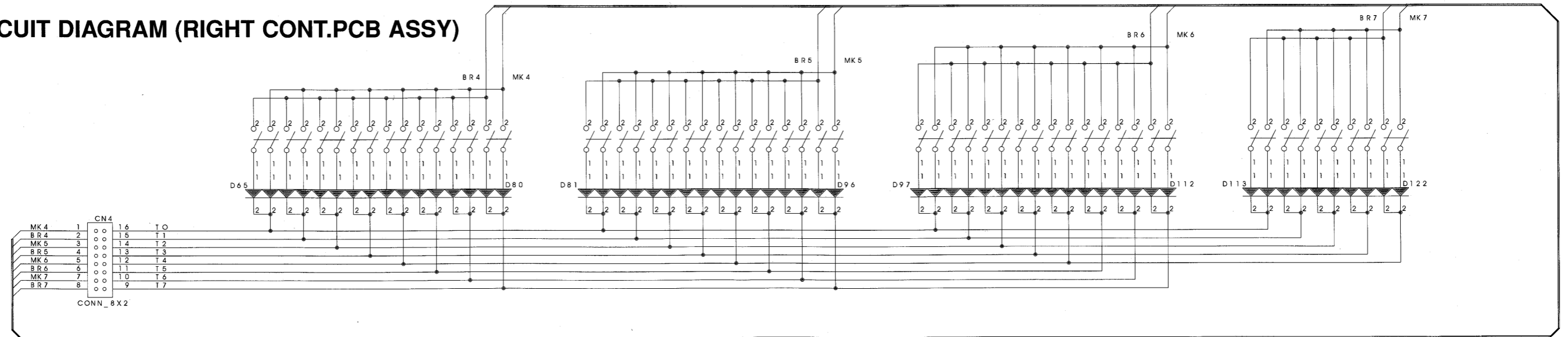
View from component side

LEFT CONTACT PCB ASSY w/RUBBER ASSY 7624505000

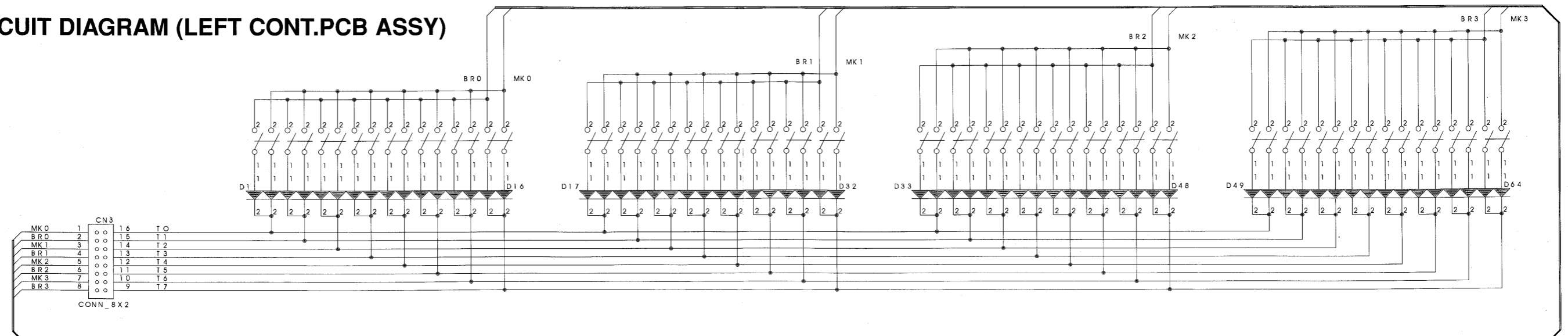


View from component side

CIRCUIT DIAGRAM (RIGHT CONT.PCB ASSY)



CIRCUIT DIAGRAM (LEFT CONT.PCB ASSY)



IDENTIFYING VERSION NUMBER

Hold "TONE2" button while powering on the instrument, the display will show the current Software ROM Version Number .

Power OFF the instrument to Exit from this display.

AUDIO TEST

- 1) Set the Master Volume Potentiometer to Max.
- 2) Hold "TONE3" button while powering on the instrument, the display will show "Audio Test ".
- 3) A 440Hz Sine Wave will be output from Right speaker and a 1760Hz Sine Wave will be output from Left speaker.
- 4) Connect the oscilloscope across Righth speaker and adjust the signal output level at 7.5 Vpp, by trimmer P1, located on the POWER AMP PCB.
- 5) Repeat the same as above for adjusting the Left channel, by trimmer P2, located on the same pcb.
- 6) To exit from this Audio Test , switch off the instrument.

RECOVERING FACTORY DATA

CAUTION !!!

Save Performance Memory (if any), song on to the disk to avoid data loss.
For saving method refer to the Owner Manual (Disk section).
Hold the Write button while powering on the instrument,

the display will show:

FACTORY !

The CMOS S-RAM (IC15, IC16) will be initialized in this way:

- Factory Performance Memory (1 to 64) will be loaded.
- Factory MIDI Set will be loaded.

At the end of the initialization procedure the instrument will enter into normal operation mode.

TRANSLATION FROM ENGLISH INTO JAPANESE/和文対訳

バージョンの確認方法

"TONE 2" ボタンを押しながら電源を入れます。
ディスプレイに現在のROMバージョンが表示されます。

電源を切ると、このモードから抜けることができます。

オーディオテスト

1. マスターボリュームを最大にします。
2. "TONE 3" ボタンを押しながら電源を入れます。
ディスプレイに "Audio Test" と表示されます。
3. 右のスピーカーから440Hz、左のスピーカーから1760Hzのサイン波が出力されます。
4. オシロスコープを右のスピーカーに接続し、スピーカー信号出力値が7.5Vppになるよう、POWER AMP PCB上の半固定抵抗P1を調整して下さい。
5. 同様に、オシロスコープを左のスピーカーに接続し、スピーカー信号出力値が7.5Vppになるよう、POWER AMP PCB上の半固定抵抗P2を調整して下さい。
6. オーディオテストから抜けるには電源を切ります。

ファクトリーデータのロード方法

<注意>

ファクトリーデータをロードすると、ユーザーのデータは消去されてしまいます。
パフォーマンスメモリー等のユーザーデータがある場合は、必ずディスクにセーブしてからファクトリーデータのロードを行って下さい。
セーブの方法については、取扱説明書のディスクの項目を参照して下さい。

<手順>

"WRITE" ボタンを押しながら電源を入れます。
LCDには下図の様に表示されます。

FACTORY !

CMOS SRAM (IC15、IC16) が下記のように初期化されます。

- ・工場出荷時設定のパフォーマンスメモリー (1-64) がロードされます。
- ・工場出荷時設定のMIDIセットがロードされます。

初期化が終了すると、通常の動作モードとなります。

PARTS LIST E-68 (100V/117V/230V/230VE/240VA)

SAFETY PRECAUTIONS :

The parts marked Δ have safety-related characteristics. Use only listed parts for replacement.

CONSIDERATION ON PARTS ORDERING

When ordering any parts listed in the parts list, please specify the following items in the order sheet.
 Ex. QTY PART NUMBER DESCRIPTION MODEL NUMBER
 10 22575241 Sharp Key C-20/50
 15 2247017300 Knob (orange) DAC-15D
 Failure to completely fill the above items with correct number and description will result in delayed or even undelivered replacement.

RCB = Right Contact Board LB = Left Control Board
 RCB = Left Contact Board PB = Power & Amp. Board
 RB = Right Control Board MB = Main Board

NOTE : The parts marked " # " are new (Initial Parts).
 The parts marked Δ have Safety - Related characteristics.
 Use only listed parts for replacement.

<< EMI >> : Component for EMC.

CASING

K2248106	GRILL FOR LOUDSPEAKER - RIGHT	
K2248107	GRILL FOR LOUDSPEAKER - LEFT	
# 7697905000	VARN.+SILKSCR. TOP CABINET	E68
# K2238112	SILKSCREEN PLEXIGLASS	

CHASSIS

# K1188123	SUPPORT FOR LCD
------------	-----------------

KNOB BUTTON

K2478227	POT. KNOB H.13 D.14	(BLACK)
K2478198	POT. COVER	
K2478228	BUTTON	MM 11.7X6.8 (BLACK ABS)
K2478230	BUTTON	MM 17.3X8.3 (BLACK ABS)
# K2478246	BUTTON	MM 11X6 (GREY ABS)
# K2478247	BUTTON	MM 17X8 (GREY ABS)
# K2478248	BUTTON	MM 24X5 (GREY ABS)
# K2478249	BUTTON	MM 11.7X6.8 (RED ABS)
22488183	POWER SWITCH KNOB N.001	(BLACK)

SWITCH

Δ 1312975301	SWITCH	EVQ-QSB 05K GR.160	LB/RB
13129135	SWITCH	SDDWA-1401A	SW1 on PB
13119314	4/POSITION SWITCH	SRBM1-4N	SW2 on MB

JACK, SOCKET

13449726	DC SUPPLY SOCKET	HEC 2305-01-230	JK1 on PB
13449252	JACK SOCKET	YKB 21-5006	JK2 on PB
13449125	JACK SOCKET	HLJ0520-01-110	JK1, JK2, JK3 on MB
13429664RI	DIN SOCKET	MG/PR 5L	JK5, JK6 on MB
13429903	MINI DIN SOCKET	8V.TCS758701401	JK4 on MB

DISPLAY UNIT

# J5039107	LCD ITAROL-M001	
# 7697904000	LCD+CONNECTIONS ASSY	E-68

DISK DRIVE UNIT

* J2409101	FLOPPY D.DRIVER JU-257 A166
------------	-----------------------------

BENDER UNIT

* K3278104	PITCH BENDER W/SENSOR +CABLE
------------	------------------------------

SPEAKER

K2418107	LOUDSPEAKER CF120078-01
----------	-------------------------

KEYBOARD ASSY

7626921000	61-KEY KEYBOARD TP/7BA
------------	------------------------

NOTE :For details, refer to KEYBOARD PARTS LIST (Pag.4)

PCB ASSY

7696101000	POWER SUPPLY PCB ASSY	E-66/68
# 7697902000	RIGHT CONTROLS PCB ASSY	E-68
# 7697903000	LEFT CONTROLS PCB ASSY	E-68
# \square 7697901000	MAIN PCB ASSY	E-68
7624504000	RIGHT CONTACT PCB ASSY W/RUBBER	
7624505000	LEFT CONTACT PCB ASSY W/RUBBER	

IC

15229718RI	PHOTO-COUPLER	6N 137	IC26 on MB
15279824	I.C. HN624116 FBC90	1.00	IC20 on MB
15279726	I.C. HN62318 BCF45	1.00	IC8 on MB
# K522812510	I.C. 16Mbit MASK ROM		IC14 on MB
# K525812210	I.C. HD6435328RF03F	FLAT	IC11 on MB
15259886	I.C. 74 HCU 04	FLAT	IC1 on MB
15259701	I.C. 74 HC 00	FLAT	IC17, IC21 on MB

J5259001	I.C. 74 HC 04	FLAT	IC10 on MB
J5259105	I.C. 74 HC 138	FLAT	IC27 on MB
J5259113	I.C. 74 HC 390	FLAT	IC24 on MB
15239124	I.C. SSC1000-15239124	FLAT	IC4 on MB
15235149	I.C. HG62E11B24FS	FLAT	IC25 on MB
15279510	I.C. HM65256 BLFP-10T	FLAT	IC7 on MB
J5259004	I.C. HM62256LFP-10T	FLAT	IC16 on MB
J5259107	I.C. HM628128ALFP-7	FLAT	IC15 on MB
15289712	I.C. M5M34051FP	FLAT	IC23 on MB
15239229	I.C. TC6116-GP4		IC19 on MB
15199780	I.C. HD63266FP-64A		IC18 on MB
15259884	I.C. TC7S08F	MOS	IC5 on MB
15259887	I.C. TC7SU04F	FLAT	IC22 on MB
15219183	I.C. M51953 A	STANDING	IC12 on MB
15289120	I.C.NJM 4565M-TE3		IC3 on MB
15289702	I.C. UPD6376	DAC	IC6 on MB
15189210	I.C. BA 5218F		IC2 on MB
Δ 15199197RI	I.C. UA 7805 SCNC		IC1 on PB
Δ 15199550RI	I.C. TDA 1905		IC2, IC3 on PB

TRANSISTOR

15119154RI	TRANSISTOR	BC/549-B	LB/Q1 on RB
15129136	TRANSISTOR	2SC-2878-A/B	Q1, Q2, Q3, Q4 on MB
15319101	TRANSISTOR	2SC-2412	Q6,Q8, Q9, Q13, Q15 on MB
15319102	CHIP TRANSISTOR	2SC2882Y-TEL12	Q5 on MB
15309101	TRANSISTOR	2SA-1037KR	Q7, Q10, Q14 on MB

DIODE

15019159RI	DIODE	1N-4148	RCB/LCB/LB/RB/MB
15339112	CHIP DIODE	DA119	D2,D3,D6,D7,D9,D10 MB
15029320RI	LED DIODE	TLHG4401 - GREEN	D72 onLB
15029284RI	LED DIODE	TLHR4401 - RED	LB/RB
J5019101	ZENER DIODE	BZX79C 4V7	D1 on MB
15019332RI	ZENER DIODE	BZX55C 6.2V	D3 on PB
15019158RI	DIODE	IN-4001	D2 on PB
Δ 15091172RI	DIODE	BY 251	D1 on PB

RESISTOR

13919253RI	RESISTOR ARRAY	S.L.8X15K +C	RA4, RA5, RA6 on MB
15399917	CHIP RES. ARRAY	4X 10K E/U	RA1, RA8 on MB
J3919104	CHIP RES.ARRAY	2512 8X10 K +2C	RA2, RA3, RA7 on MB
J3809129	UNINFL. RES.	220 OHM 0.6W 5%	R4 on PB
13819302RI	RESISTOR	150 OHM 1W 10%	R2, R3 on PB
Δ J3809139	WIRE RES.	2.2 OHM 3W 10%	R1 on PB

POTENTIOMETER

J3219107	ROT. POTENTIOM.	EVUF2AH20B53	VR2 on LB
J3339001	SLIDER POT.	10KB STEREO	VR1 on LB
13299226RI	TRIM POT.	4.7K P 2.5X5-HCERMET	P1, P2 on PB

CAPACITOR

13529147RI	CAPAC.ARRAY	8X100 PF	CA1, CA2 on MB
13649668RI	ELECTRL.COND.-H	47UF 25V	C1 on LB
13639154	ELECTRL.COND.-V	1000UF 16V	C4, C16 on MB
13639179RI	ELECTRL.COND.	100U 25V RAD	C13, C14 on PB
13639661RI	ELECTRL.COND.-V	2200UF 25V	C15, C17, C18 on PB
13639167RI	ELECTRL.COND.-V	22UF 25V	C24, C29 on PB
13649662RI	ELECTRL.COND.-V	3300UF 25V	C16 on PB
13639169RI	ELECTRL.COND.-V	47UF 25V	C20, C33, C34 on PB
J3629103	ELECTRL.COND.	100U 25V P5	C5, C29, C30, C35, C45, C58 MB
13639206RI	ELECTRL.COND.-V	10UF 50V	C19, C21, C32 on PB
J3629104	ELECTRL.COND.	10U 50V P5	MB
J3629105	ELECTRL.COND.	47U 50V P5	C6, C28, C49 on MB
13639223RI	ELECTRL.COND.-V	4.7UF 63V	C25, C28 on PB
J3629106	ELECTRL.COND.	4.7U 63V P5	C48 on MB
13639255RI	ELECTRL.COND.-V	1UF 100V	C22, C23, C26, C27, C30, C31 on PB
J3629107	ELECTRL.COND.	1UF 100V P5	C31 on MB
13649103JO	UNPOL.COND.	10U 16 P5	MB

INDUCTOR, COIL, FILTER

22448240	NOISE SUP.	BL02RN2-R62	L1, L2, L3 on PB
12449382RI	NOISE SUP.	PLT1-R53C	L4 on PB
12449370	NOISE SUP.	SBT-0160W	L2, L23, L24 on MB
12449326	NOISE SUP.	SBT-0460	L25 on MB
13529187	NOISE SUP.	ELKTR391CA	MB
13529186	NOISE SUP.	ELKTR150GA	FL1 on MB
12449380	NOISE SUP.	EXC-ELDR25V	MB

CRYSTAL, RESONATOR

15299132	QUARTZ	20MHZ MA-506	X3 on MB
15299156	QUARTZ	16MHZ	X2 on MB
15299112RI	CERAMIC RESONATOR	8 MHZ	X1 on MB

CONNECTOR

J3459102	FEM. TERMINAL 4089C CON.	P.2.5
J3459103	FEM. TERMINAL 4044S CON.	P.2.5
13429233	RAM-CARD CONNECTOR N.001	
13419677RI	16P FEM. CONN. AMP 1.27	
13369689RI	20P FEM. CONN. AMP 1.27	
13369543RI	9P MALE CONN. AMP	
13369688RI	4P MALE CONN. P 2.5 M	
J3439103	6P MALE CONN. P 2.5 M	
J3439108	14P MALE CONN. C/1.27	
J3439109	5P MALE CONN. P 2.5 M	
J3439117	6P MALE CONN. 90 α P.2.5	

WIRING, CABLE

# K3468148	16P FLAT CABLE	(12)	2C	CN3 on MB to CN4 on RCB
# K3468149	16P FLAT CABLE	(22)	2C	CN2 on MB to CN3 on LCB
7695504000	SH. CBL ASSY	(28)	W(5PC-4PC)	CN12 on PB to CN5 on MB
7695505000	4-CBL ASSY SH.	(30)		CN1 on MB to CN1 on RB
7695506000	4-CBL ASSY	(20/86)	W(4PC)	CN11 on PB to Speaker
7696106000	3-CBL ASSY	(24)	W(4PC-4PC)	CN7 on MB to FDD

BATTERY

12569149RI	LITHIUM BATTERY	CR2032
------------	-----------------	--------

SCREW

J2289122	SELF TAP.SCREW 2.2X 6 TC TC
J2289126	SELF TAP.SCREW 2.9X 8 TCTCPRBZ
J2289125	SCREW 2.9X10 TC TC PR TROP
J2289130	SCREW 2.9X13 TC TC PR TROP
J2289108	SELF LOCK.SCREW M3X10 TCTC H.6
J2289115	SELF TAP.SCREW 3.5X9.5 TCPRTFR H.8
J2289149	SPECIAL SCREW 3X20 TFR PR T.7
J2289113	NUT 3MA H.3
J2139102	TOOTHED WASHER I/D 3

PACKING

K2638128	RIGHT POLYESTERENE END-SIDE	
K263815401	RIGHT POLYST. END-SIDE	
K267810702	CARTENE ENVELOPE HD CM.44X120	
# K2618169	OUTER PACKING	E-68

MISCELLANEOUS

22165134	BRASS BUSHING	
K2168105	SPACER F/LED H.12 HEX.	
J2359101	SPACER 3M ART. SJ5012	
22265242	RUBBER GUIDE BUSHING	
J2159102	PLASTIC RIVET SR3055	
# K2268141	RIGHT VIBRATION DAMPER (BLACK)	(BLACK)
# K2268142	LEFT VIBRATION DAMPER	(BLACK)
# K2268143	VIBRATION DAMPER F/LCD (BLACK)	(BLACK)
# K2258112	MYLAR SHIELD MM 105X140	
12569420	SOCKET FOR BATTERY	CR2032
1342982301	POWER SUPPLY SOCKET HOLDER No 2	
22200188	CARD SLOT	

ACCESSORIES

# K6018257	OWNER'S MANUAL (I/E/D/F)	E-68
# K6018255	OWNER'S MANUAL (J/E/D/F)	E-68
# K6018258	MIDI IMPLEMENTATION MANUAL	E68
K6018109	MIDI GUIDE	
22208320	MUSIC SCORE HOLDER	
K2198102	MUSIC REST	
22448613	POWER ADAPTOR	ACJ 100V (100V)
22448612	POWER ADAPTOR	ACJ 120V (117V)
2244861101	POWER ADAPTOR	ACJ 230V (230V)
2244861001	POWER ADAPTOR	ACJ 230VE (230VE)
22448614	POWER ADAPTOR	ACJ 240VA (240VA)

* NOTE : Replacement should be on a unit basis. No replacements available for individual parts. Replacement only be a unit