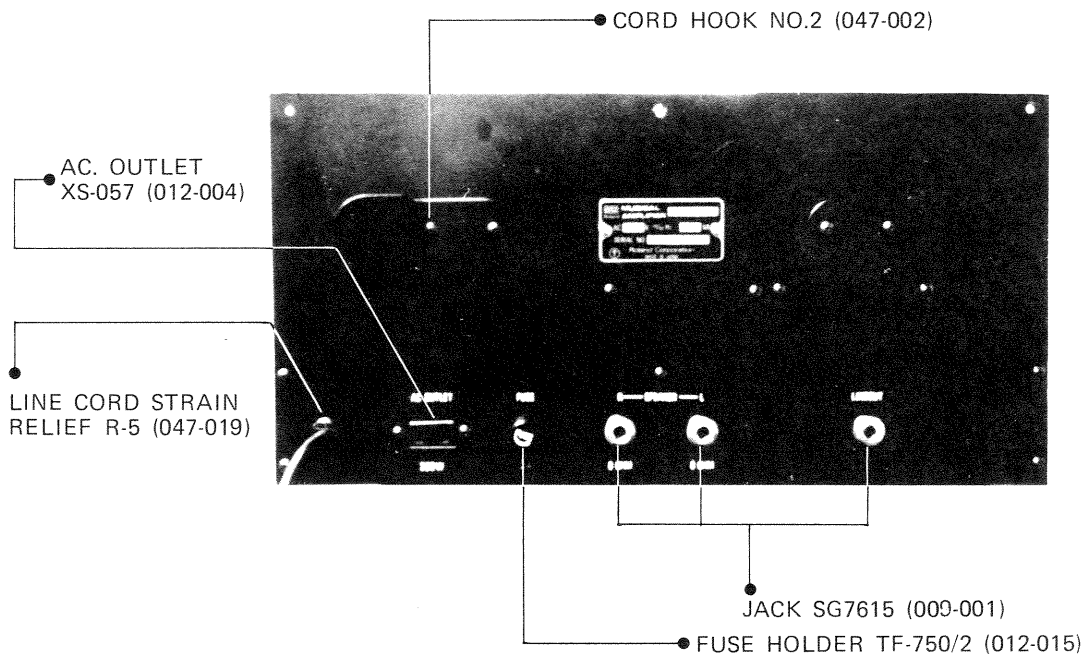
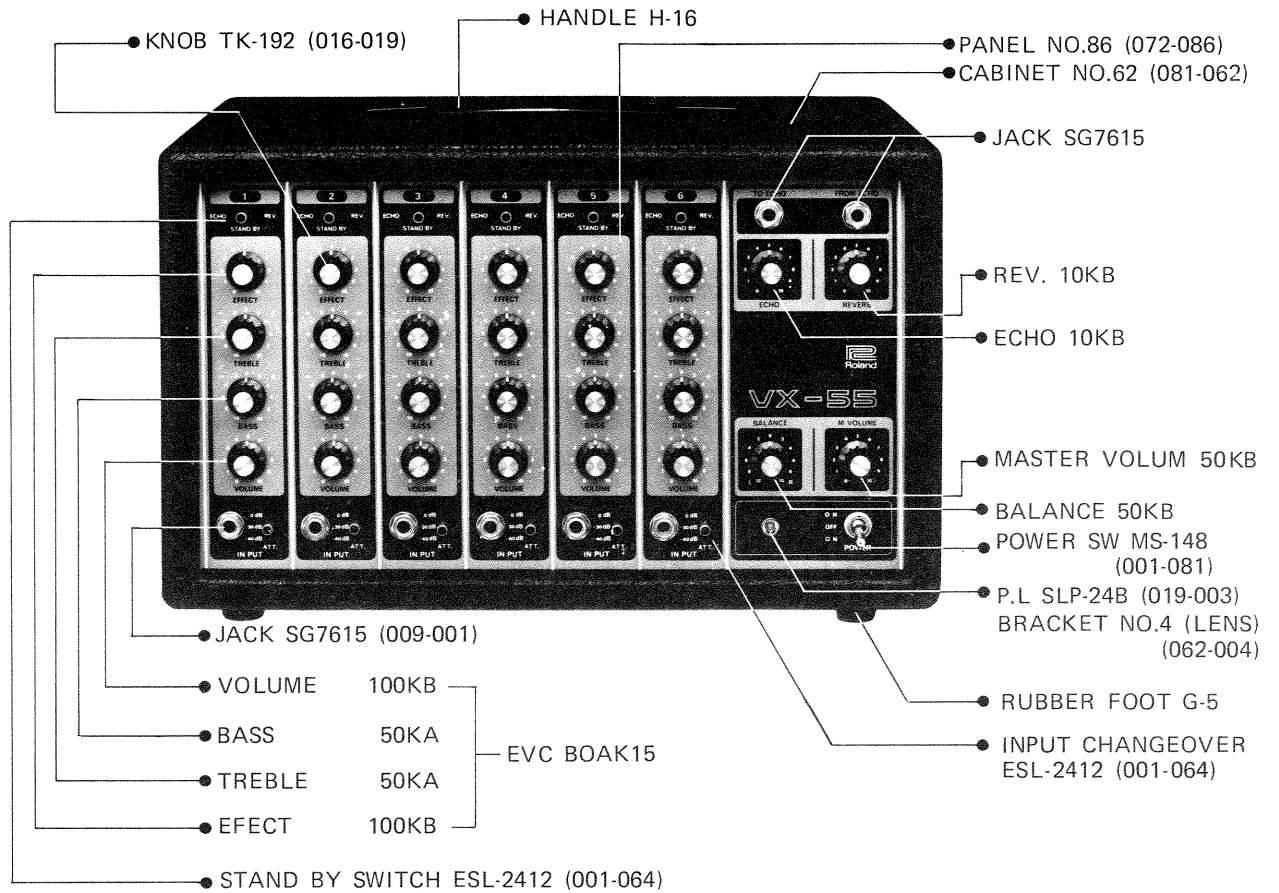


SERVICE NOTES

CONTENTS

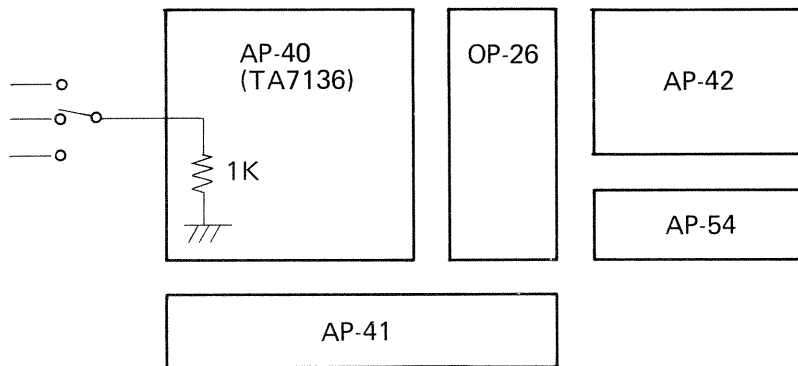
1. PANEL DIAGRAM	1
2. SPECIFICATIONS	2
3. CIRCUIT BOARD ASSEMBLY (OP-26, AP-54, AP-40)	3
4. CIRCUIT BOARD ASSEMBLY (AP-41, AP-42)	4
5. GENERAL CIRCUIT DIAGRAM	5
6. CIRCUIT BOARD ASSEMBLY (PS-29, AP-56).....	6
7. GENERAL CIRCUIT DIAGRAM	7
8. PARTS LIST	8



SPECIFICATIONS

- **Input:** 6-channel
- **Channel Control:** Volume, Bass, Treble, Effect, Standby/Echo/Reverb Change Switch, Input selection switches.
- **Main Control:** Main Volume, Echo Volume, Reverb Volume, Balance Control on each channel.
- **Output:** Speaker x 2, Line Out
- **Other:** AC Outlet, Echo Chamber Input x 2 (to Echo, from Echo)
- **Power:** 30W (8Ω) + 30W (8Ω) R.M.S.
- **Semiconductors:**
- **Power Consumption:** 200VA
- **Dimensions:** 400(W) x 275(D) x 250(H)mm (15.7" x 10.8" x 9.8")
- **Weight:** 10kg (22 lbs.)

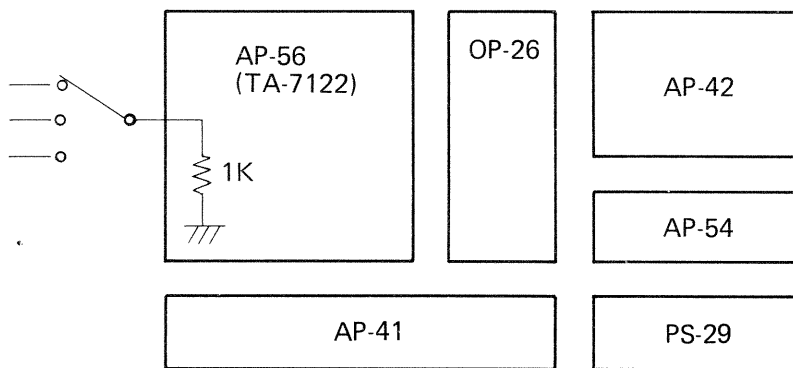
Changes on PCB's used in reference to Production Serial Number.



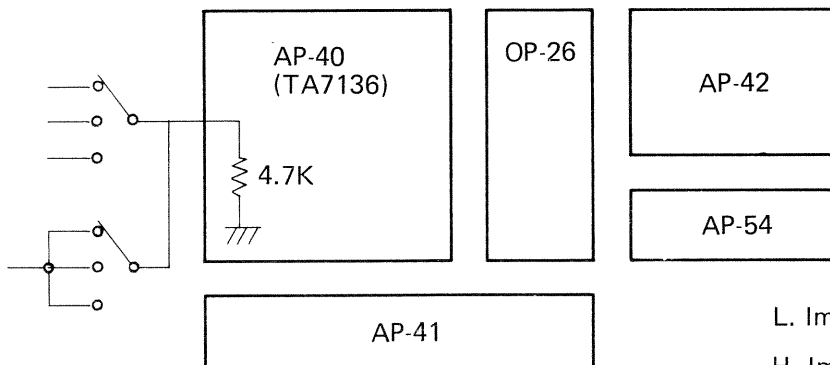
Serial No. 430100 – 480649

Sensitivity and Input Impedance (at 1KHZ)

0 dB:	4.6mV	1Kohm
-20 dB:	50 mV	10Kohm
-40 dB:	480 mV	80Kohm



Serial No. 490650 – 511099

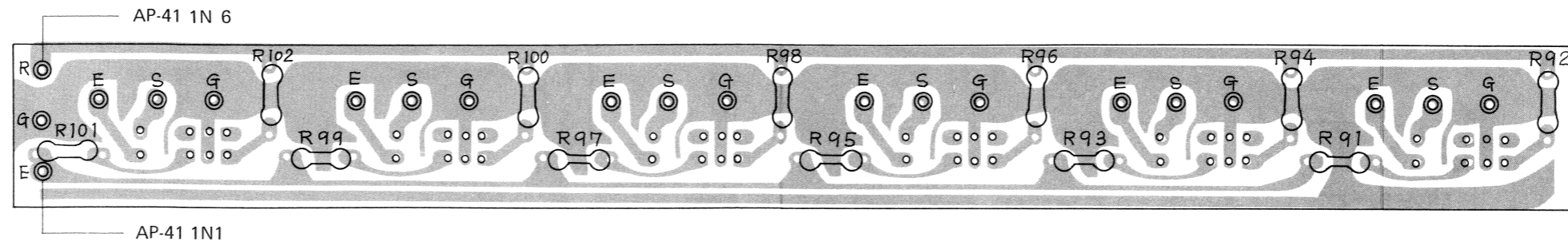


Serial No. 531100 –

L. Imp	4.6mV	1.5 Kohm
H. Imp	29 mV	25 Kohm
L. Gain	48 mV	10 Kohm

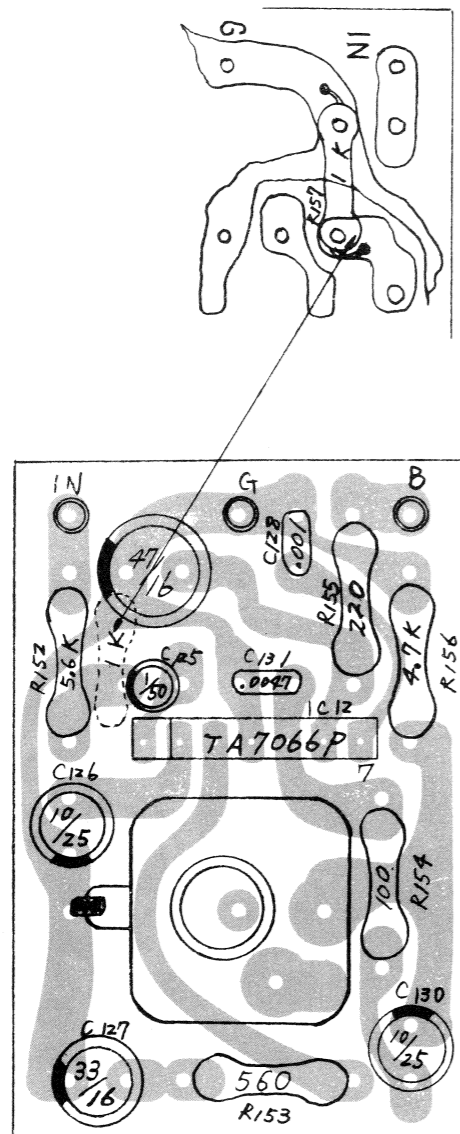
CIRCUIT BOARD ASSEMBLY (OP-26. AP-54. AP-40)

OP-26 (146-026)



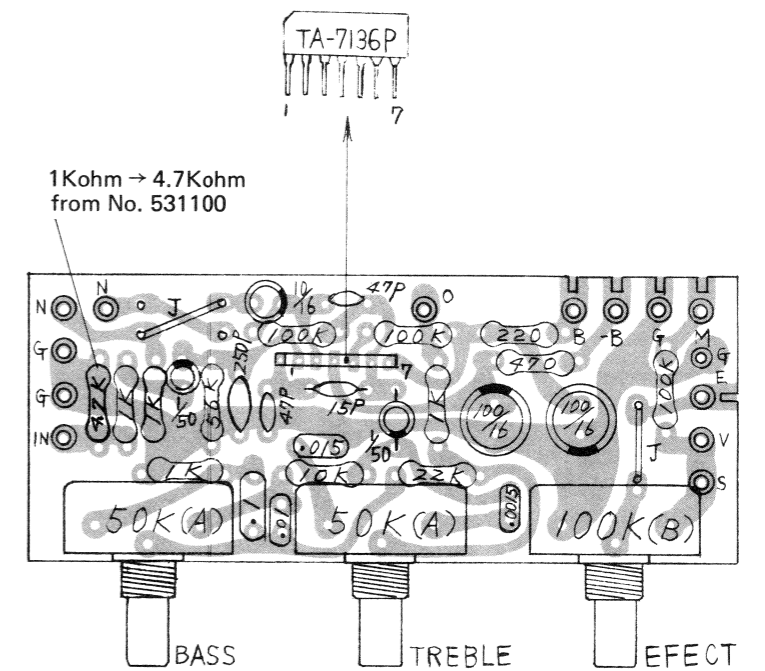
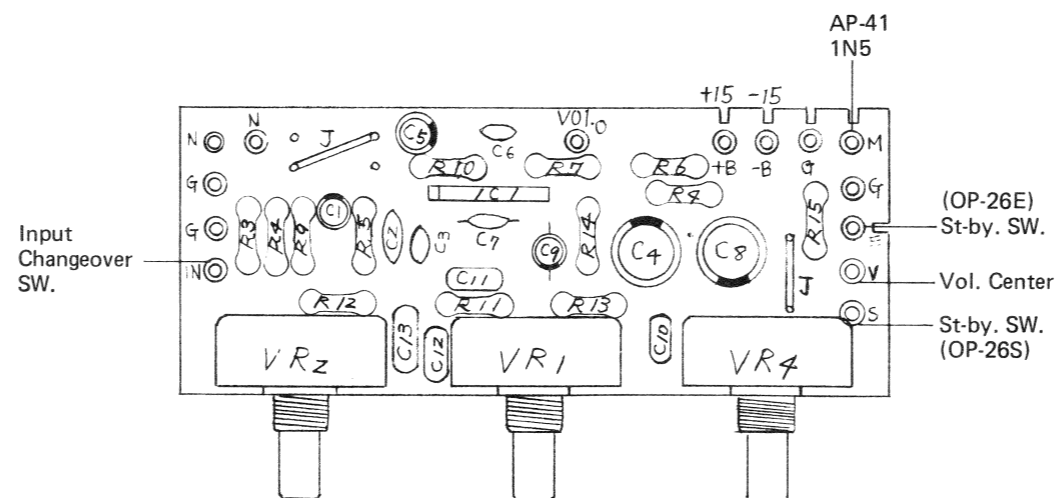
Rear view (looked from Foil pattern). All resistors are 1/4W 100Kohm.

AP-54 (141-054)



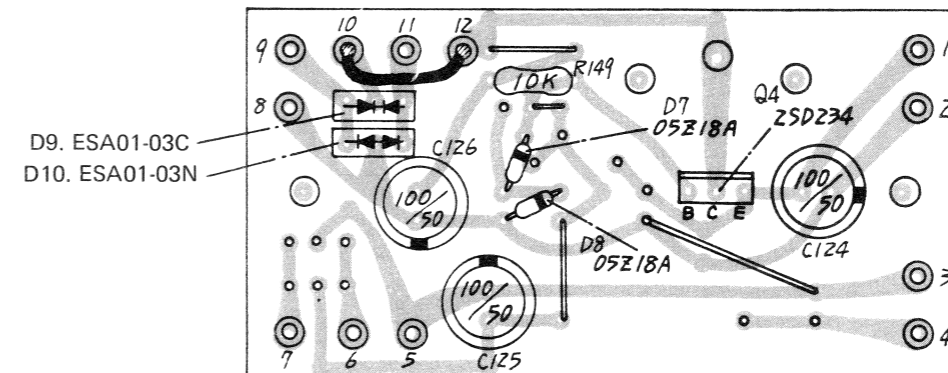
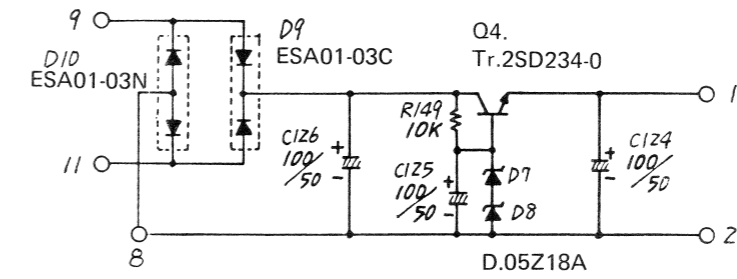
AP-40 (141-040)

The installation of this AP-40 is on those products bearing serial numbers, from 430100 to 480649 and again from 531100 and higher.



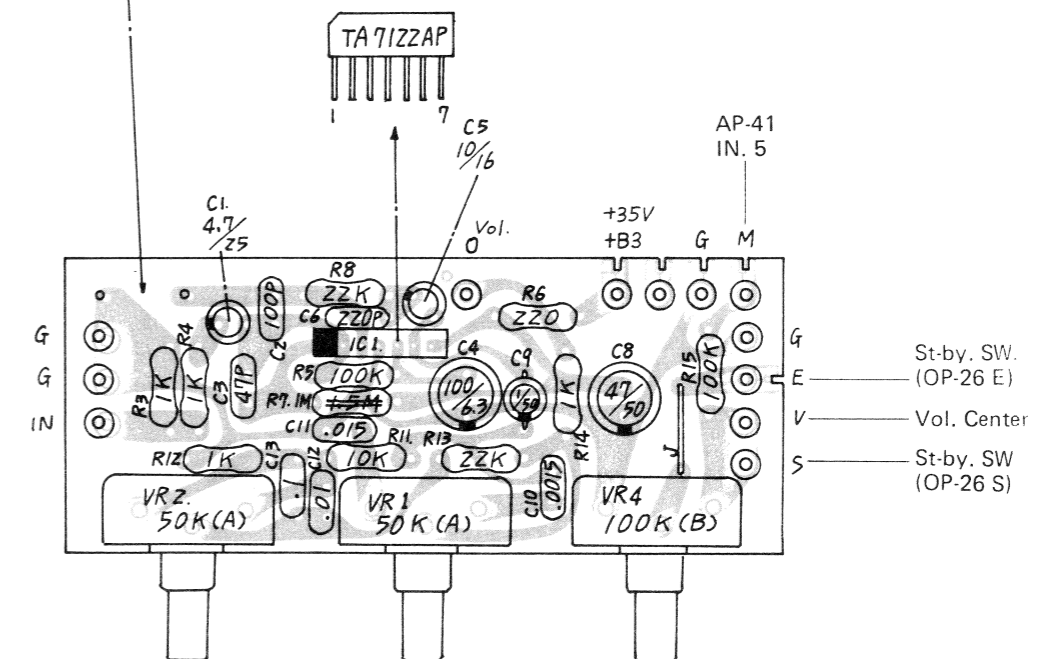
CIRCUIT BOARD ASSEMBLY (PS-29. AP-56)

PS-29 (146-029)

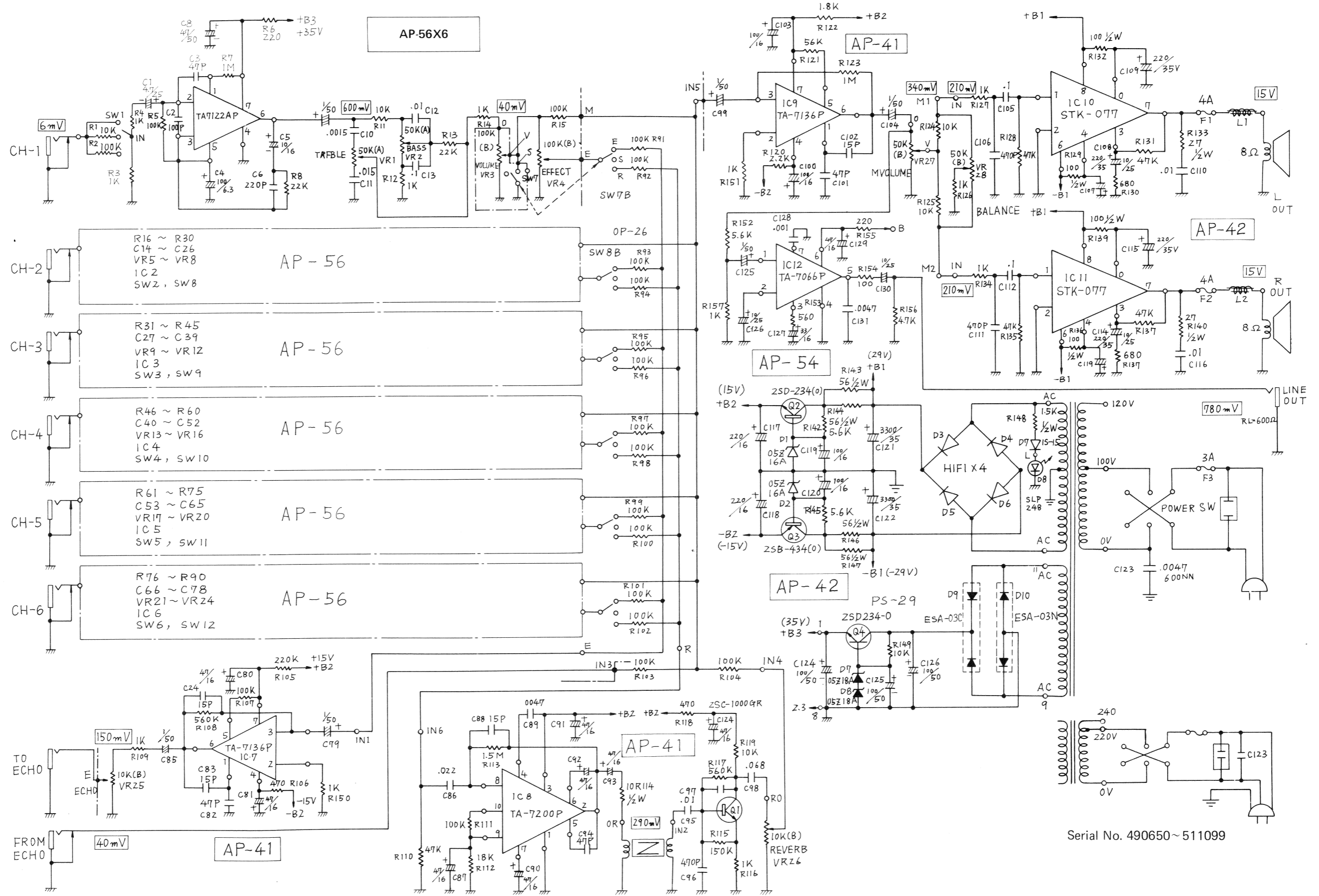


AP-56 (141-056)

When TA7129P is used in place of TA7122AP, resistor 2200hm 1/4W should be mounted onto this point.



VX-55 GENERAL CIRCUIT DIAGRAM



Serial No. 490650~511099

PARTS LIST

JANUARY 20, 1977 VX-55

VX-55 General

081-062 Cabinet
 Handle H-16
 Rubber foot G-5
 131-065 Vinyl Cover
 130-117 Inner carton box

Chassis Ass'y

061-083 Chassis No. 83
 072-086 Pannel No. 86
 048-031 Heatsink No. 31 Rear Panel
 064-065 Holder No. 65 Bracket for st-by SW.
 064-064 Holder No. 64 for input Lever SW.
 065-094 Cover No. 94 for Lever SW.
 022-090 Power transformer No. 90 (100V ~ 120V)
 022-090D Power transformer No. 90D (220V ~ 240V)
 (These can be used in place of 083, 083D)
 008-005 Fuse 1.5A (100V ~ 120V)
 008-049 Fuse 0.75A (220V ~ 240V)
 012-015 Fuse Holder TF-750/2
 012-004 AC outlet XS-057-1-1
 047-019 Line cord strain relief R-5
 001-081 Power switch MS-148 No. 71 6P
 009-001 Jack No. 1 SG7615 No. 5
 019-003 LED SLP-24B
 062-004 Bracket No. 4 (lens for SLP-24B)
 068-001 Bushing No. 1 (insertion pad in bracket)
 121-007 Nut No. 7 M8P (for lock, bracket)
 016-019 Knob TK-192
 001-064 Lever switch ESL-2412 (st-by, input)
 040-001 Reverbration Unit Z-3F
 120-009 Long nut No. 9 13mm
 120-010 Long nut No. 10 35mm
 028-331 Potentiometer 10KB EVCB0AK15B14
 028-334 Potentiometer 100KB EVCB0AK15B15
 028-333 Potentiometer 50KB EVCB0AK15B54
 035-101 Capacitor Polyporpylene 0.0047 ECQM6472
 065-034 Cover No. 34 (Lever SW)

PCB Ass'y

141-040 AP-40 (Pre amp)
 141-056 AP-56 (Used in only serial No. from
 141-029 PS-29 (490650 to 511099 in place of AP-40)
 141-041 AP-41 (mix)
 141-042 AP-42 (main)
 146-026 OP-26 (mix)
 146-054 AP-54 (line out)
 052-119 Board only (AP-40)
 052-121 Board only (AP-41)
 052-122 Board only (AP-42)
 052-120 Board only (OP-26)
 052-110 Board only (AP-54)
 052-184 Board only (AP-56)
 052-013 Board only (PS-29)

IC

020-027 TA-7136P
 020-028 TA-7200P
 020-001 TA-7066P
 020-060 TA-7122AP (AP-56 only)
 020-029 STK-077

Transistor

017-003 2SC-1000GR
 017-010 2SD-234-0
 017-022 2SB-434-0

Diode

018-019 Hi-Fi special
 018-005 1S1555
 018-026 05Z-16A
 018-055 05Z-18A (PS-29 only)

Potentiometer

029-046 10KB EVCT0AK15B14
 029-048 50KB EVCT0AK15B54
 029-331 10KB EVCB0AK15B14
 029-334 100KB EVCB0AK15B15
 029-333 50KB EVCB0AK15B54
 029-039 50KB EVCT0AK15A54
 029-049 100KA EVCT0AK15B15

Capacitor

037-002 Ceramic 15pF
 037-003 Ceramic 47pF
 037-004 Ceramic 100pF 50V 10%
 037-009 Ceramic 470pF
 037-007 Ceramic 250pF
 032-071 Electro, 1 μ 50V ECEA50V1
 032-036 Electro, 47 μ 16V ECEA16V47
 032-037 Electro, 100 μ 16V ECEA16V100
 032-019 Electro, 10 μ 16V ECEA16V10
 032-047 Electro, 10 μ 25V ECEA25V10
 032-035 Electro, 33 μ 16V ECEA16V33
 032-038 Electro, 220 μ 16V ECEA16V220
 Electro, 220 μ 35V ECEA35V220
 032-175 Electro, 3300 μ 35V ECET35R332S μ
 035-103 Polyporpylene 0.01 μ ECQ-M2103 KZ

Resistor

044-103 10 Ω ERC12GR1/2W 10%

Miscellaneous

048-018 Heatsink SB-7 (for 2SB-434, 2SD-234)
 008-018 Fuse Pigtail 4A
 022-020 Chok Coil LB-2.5 μ H

Carbon film resistors of 1/4W, and Mylar Capacitor, 50V are omitted.

Roland®

17059543

UPC

17059543



18981

Roland®