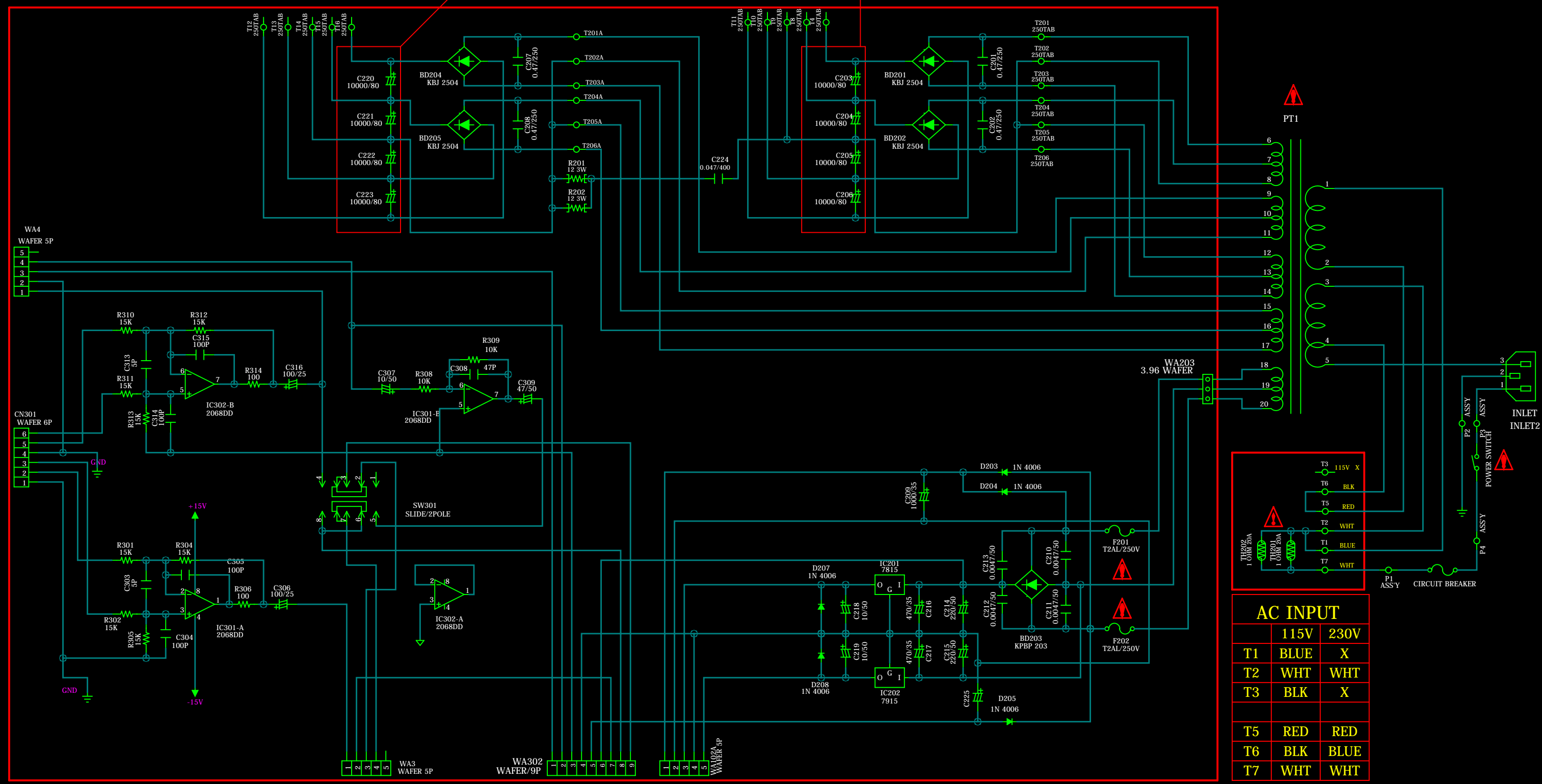
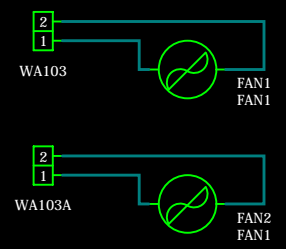
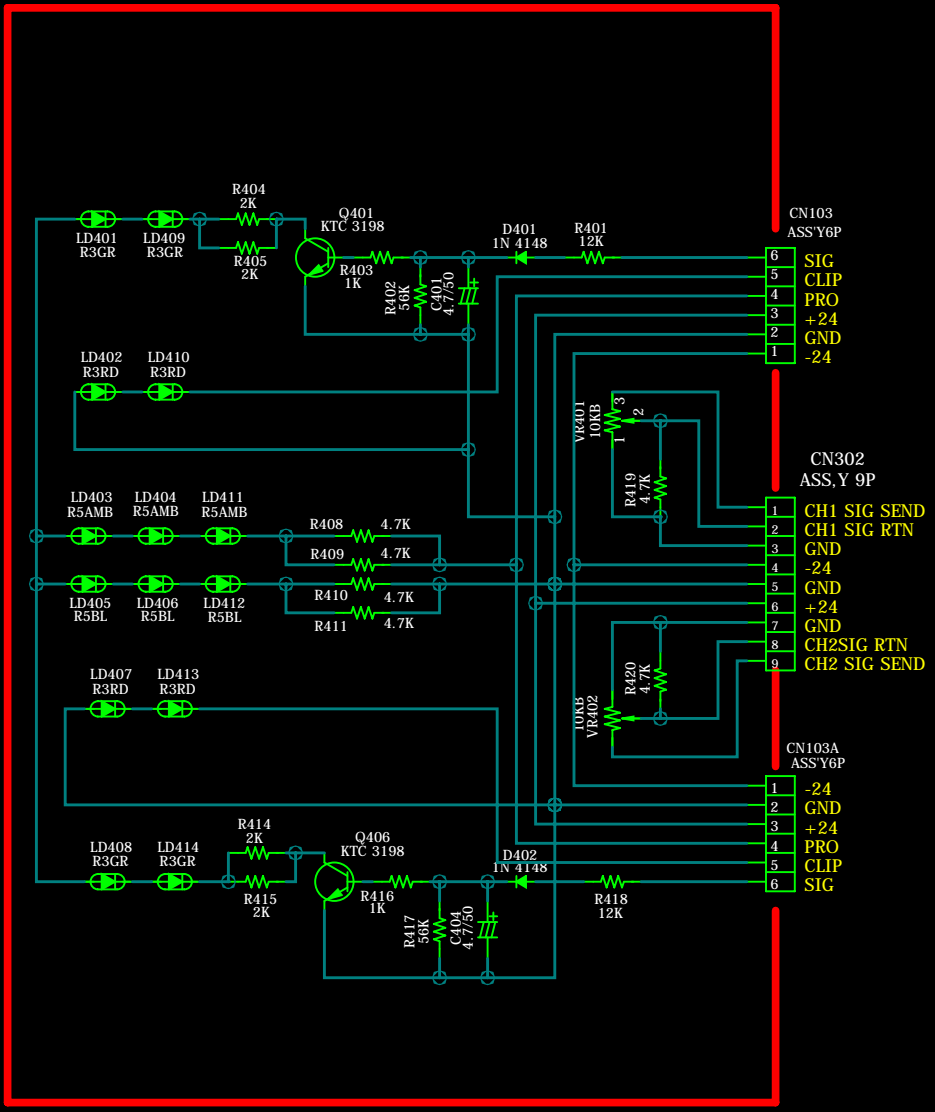
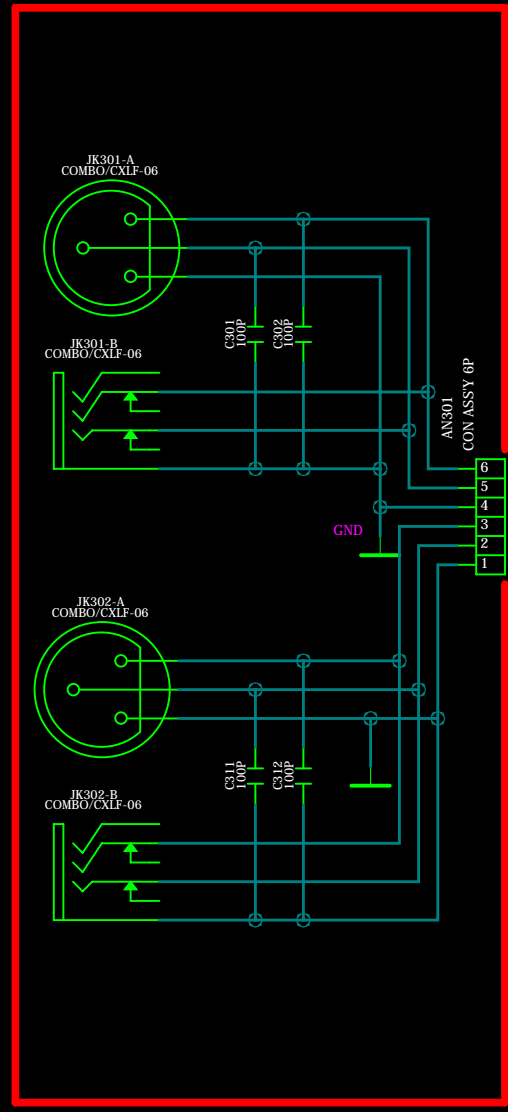
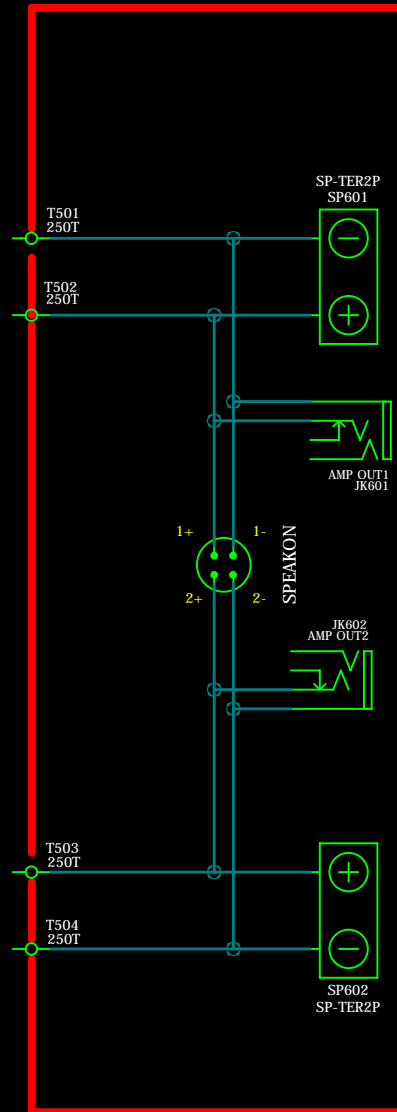


**10000/63 at SX-2400**



AC INPUT		
	115V	230V
T1	BLUE	X
T2	WHT	WHT
T3	BLK	X
T5	RED	RED
T6	BLK	BLUE
T7	WHT	WHT



**\*SERVICE INFORMATION**

- RESISTANCE VALUES ARE INDICATED IN OHMS UNLESS OTHERWISE SPECIFIED.
- CAPACITANCE VALUES ARE SHOWN IN MICROFARADS UNLESS OTHERWISE NOTED.
- ALL VOLTAGES ARE REFERRED TO GROUND UNDER THE FOLLOWING CONDITIONS.  
DC:NO SIGNAL EXCEPT WHERE INDICATED.  
AC:RMS
- PRECAUTION-  
A) ALL COMPONENTS MARKED MUST BE REPLACED WITH ORIGINAL TYPE ONLY AS SPECIFIED BY THE MANUFACTURER (SAMSON CORPORATION) AND INSTALLED IN THE ORIGINAL SPACE AND POSITIONED AWAY FROM ADJACENT COMPONENTS WHERE APPLICABLE.  
B) ALL SOLDERING MUST BE DONE USING ROSIN CORE SOLDER  
C) ALL COVERS, SHIELD AND INSULATING SPACERS MUST BE REPLACED BEFORE  
D) A DAMAGED POWER SUPPLY CORD MUST BE REPLACED BEFORE RETURNING  
E) A DIELECTRIC TEST CONSISTING OF 120V AC, 60HZ IS TO BE APPLIED SUPPLY CORD PLUG AND THE EXPOSED CONDUCTIVE SURFACE OF THE NOT LESS THAN ONE SECOND BEFORE RETURNING UNIT TO CUSTOMER.  
F) THE MARKED RESISTORS ARE MOUNTED TO THE P.C.B ON SLEEVES.

(K=1.000, M=1.000.000)  
(P=MICRO-MICROFARADS)

RETURNING UNIT TO CUSTOMER.  
UNIT TO CUSTOMER.  
BETWEEN BOTH BLADES OF THE POWER  
UNIT FOR A PERIOD OF

		SX1200	SX1800
R107		13K	20K
R108		22K	20K
R170,171		F3.3K	F3.3K
R181		82K	47K
C501,502,503,504		4700/100	6800/100
F101	100V	12A	15A
	115V	12A	15A
	220V	7A	8A
	230-240	7A	8A
FAN1,2			