

- Notes)
- J: Japanese model
 - U,C: U.S and Canadian models
 - H: European model

※ AC circuit board

	F101
Japanese, U.S and Canadian models	6A 125V
European model	T3.15A L 250V

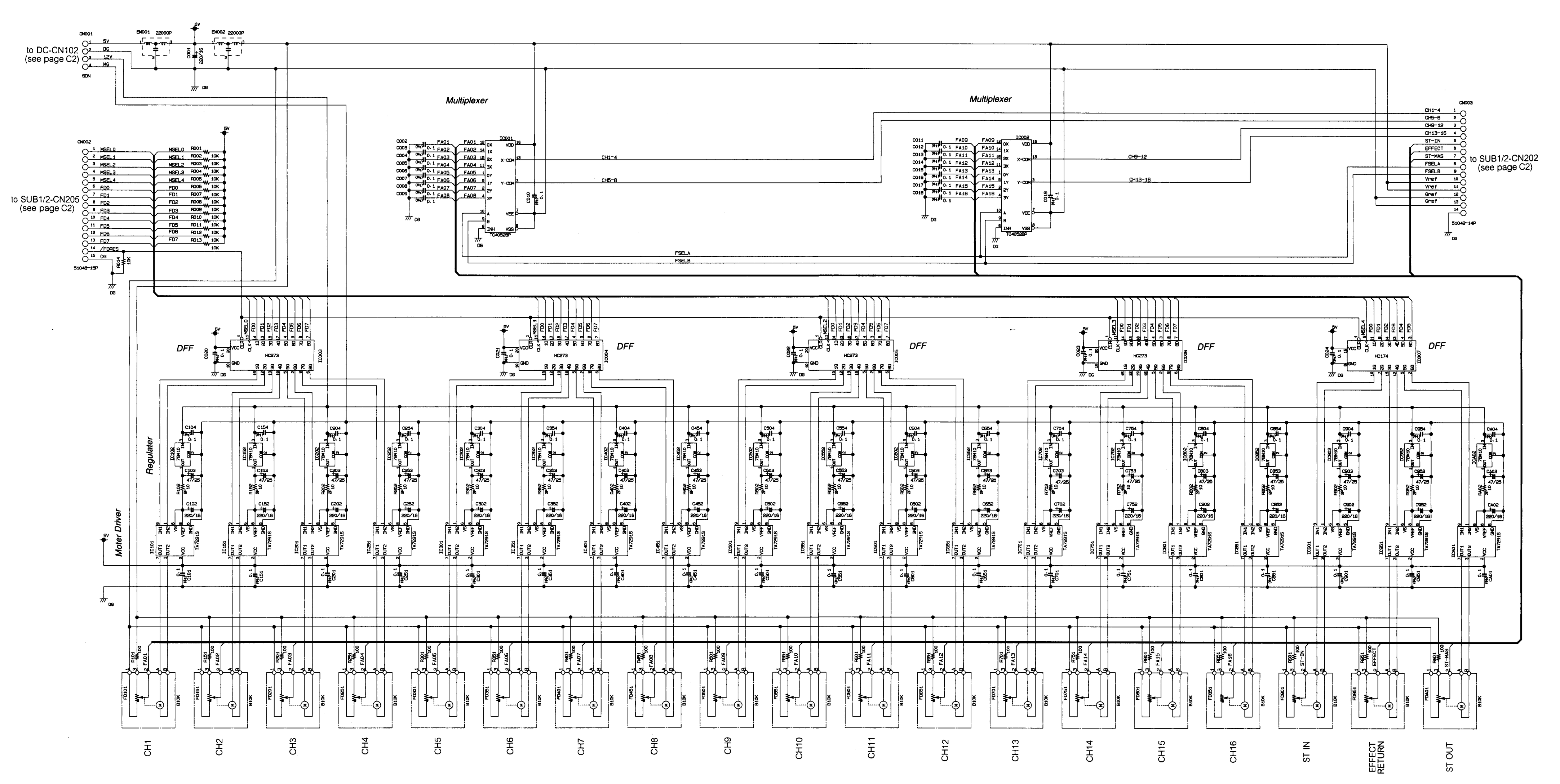
※ DC circuit board

	F201	F202	F203
Japanese, U.S and Canadian models	5A 125V	5A 125V	5A 125V
European model	T5A L 250V	T5A L 250V	T5A L 250V

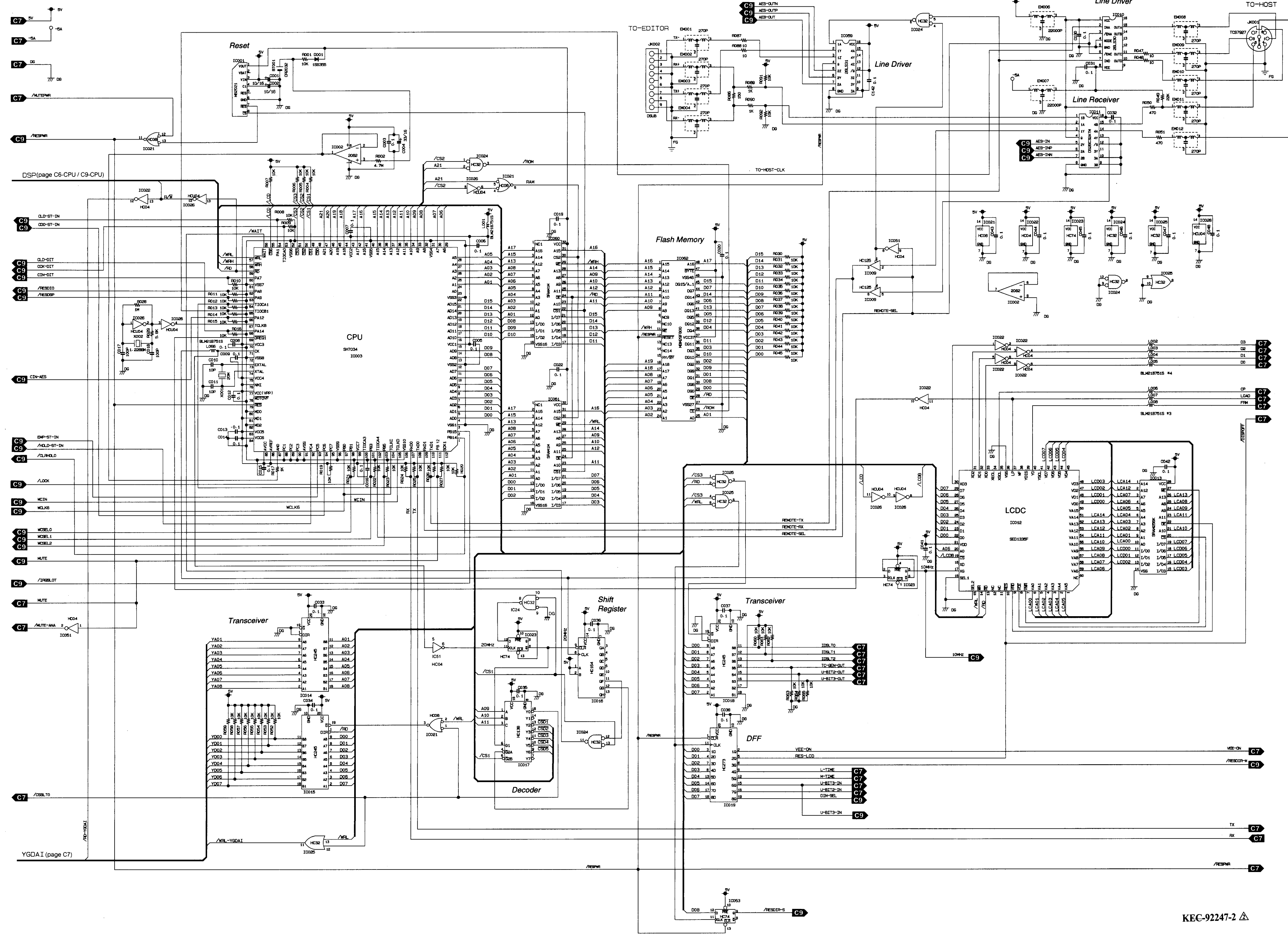
	F204	F205	F206	F207
Japanese, U.S and Canadian models	3A 250V	3A 250V	3A 250V	3A 250V
European model	T2.5A L 250V	T2.5A L 250V	T2.5A L 250V	T2.5A L 250V

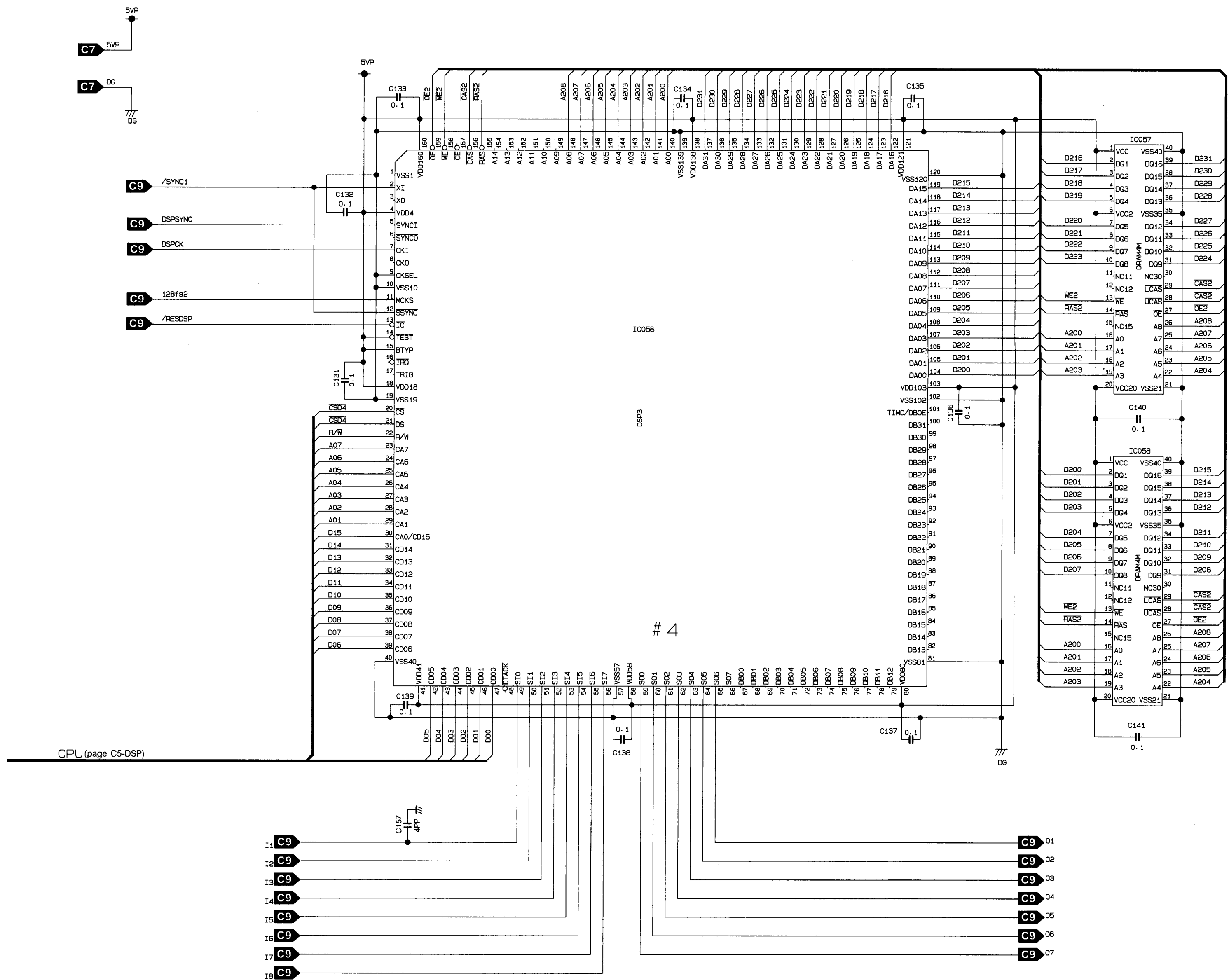
※ Transformer T1

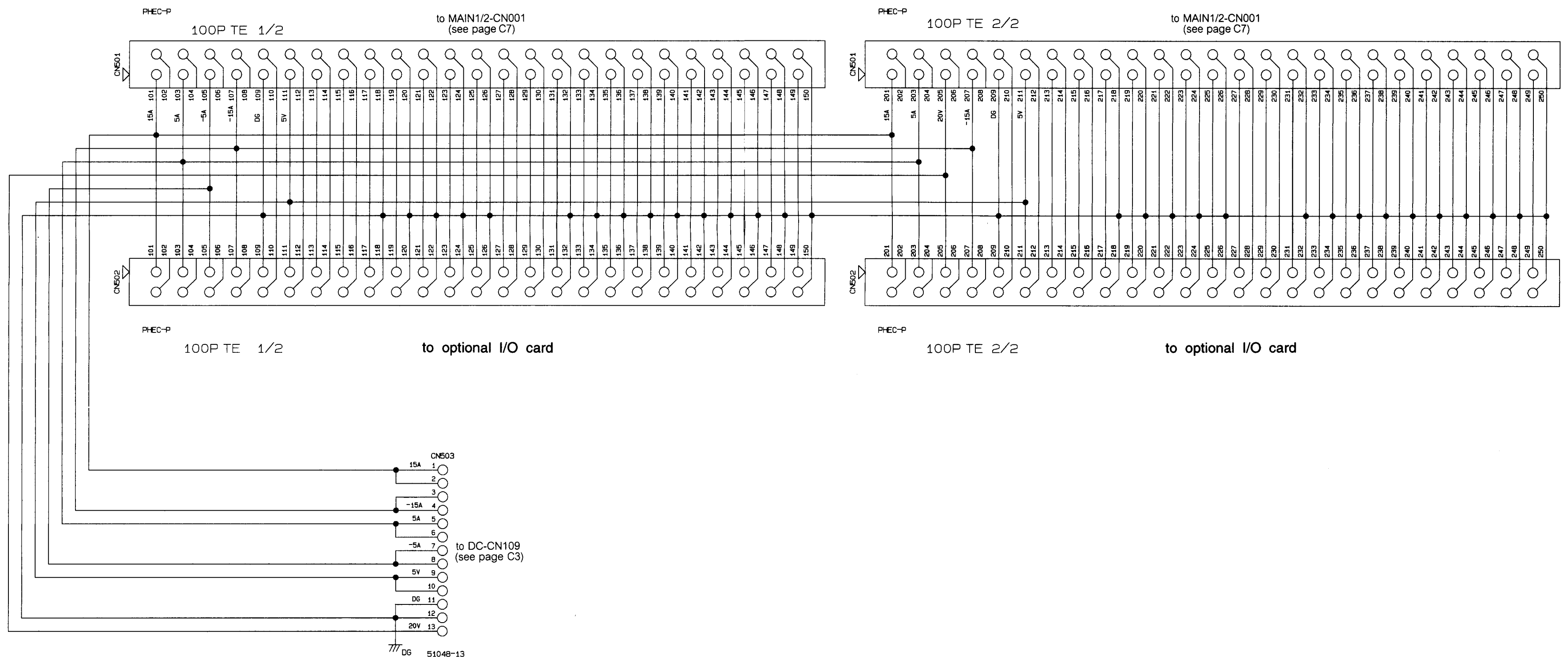
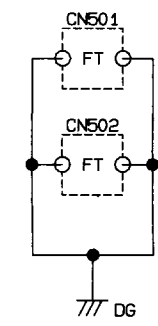
- Japanese model : XS011A00
- U.S and Canadian models : XS012A00
- European model : XS013A00



KEC-92250-2

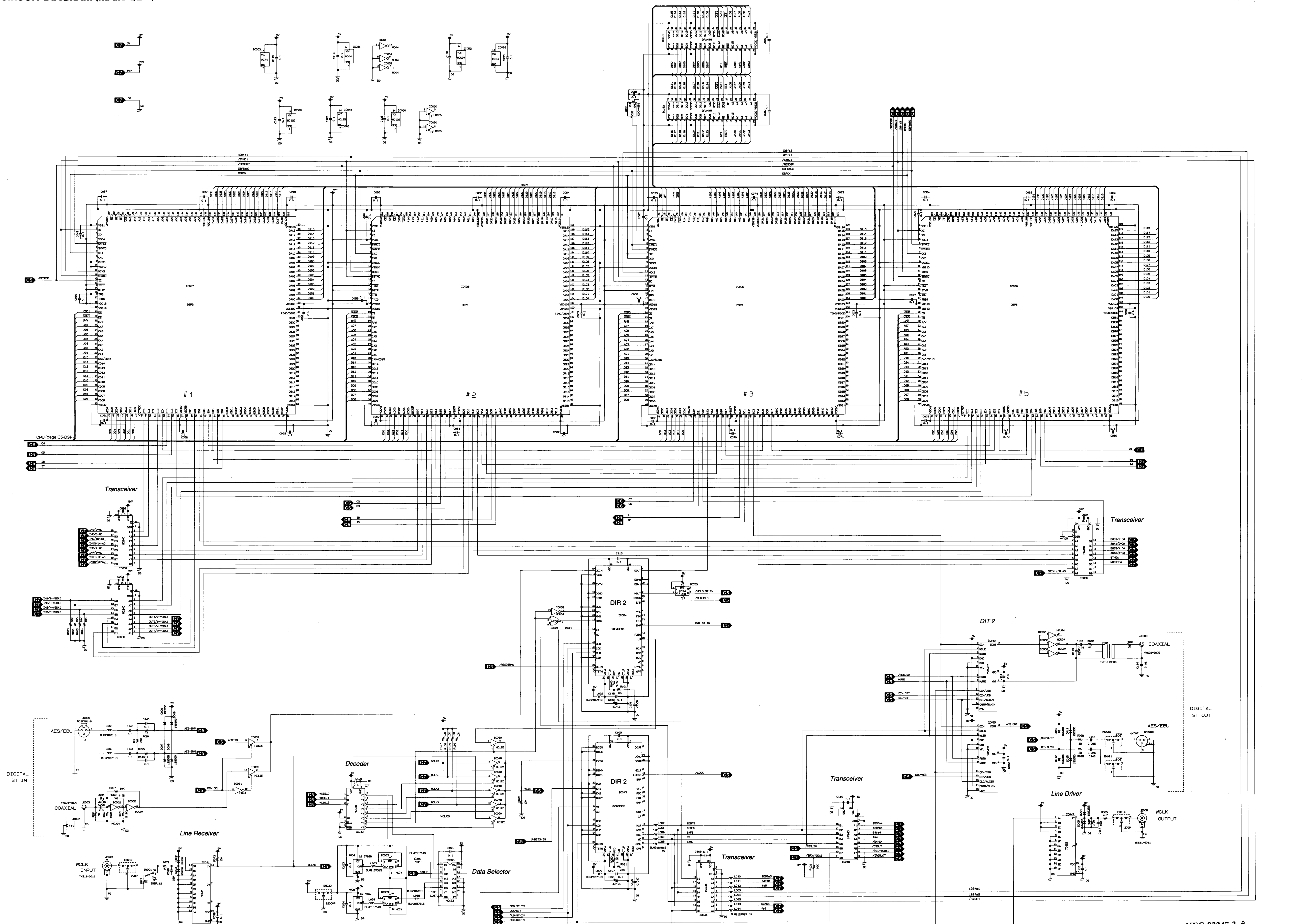




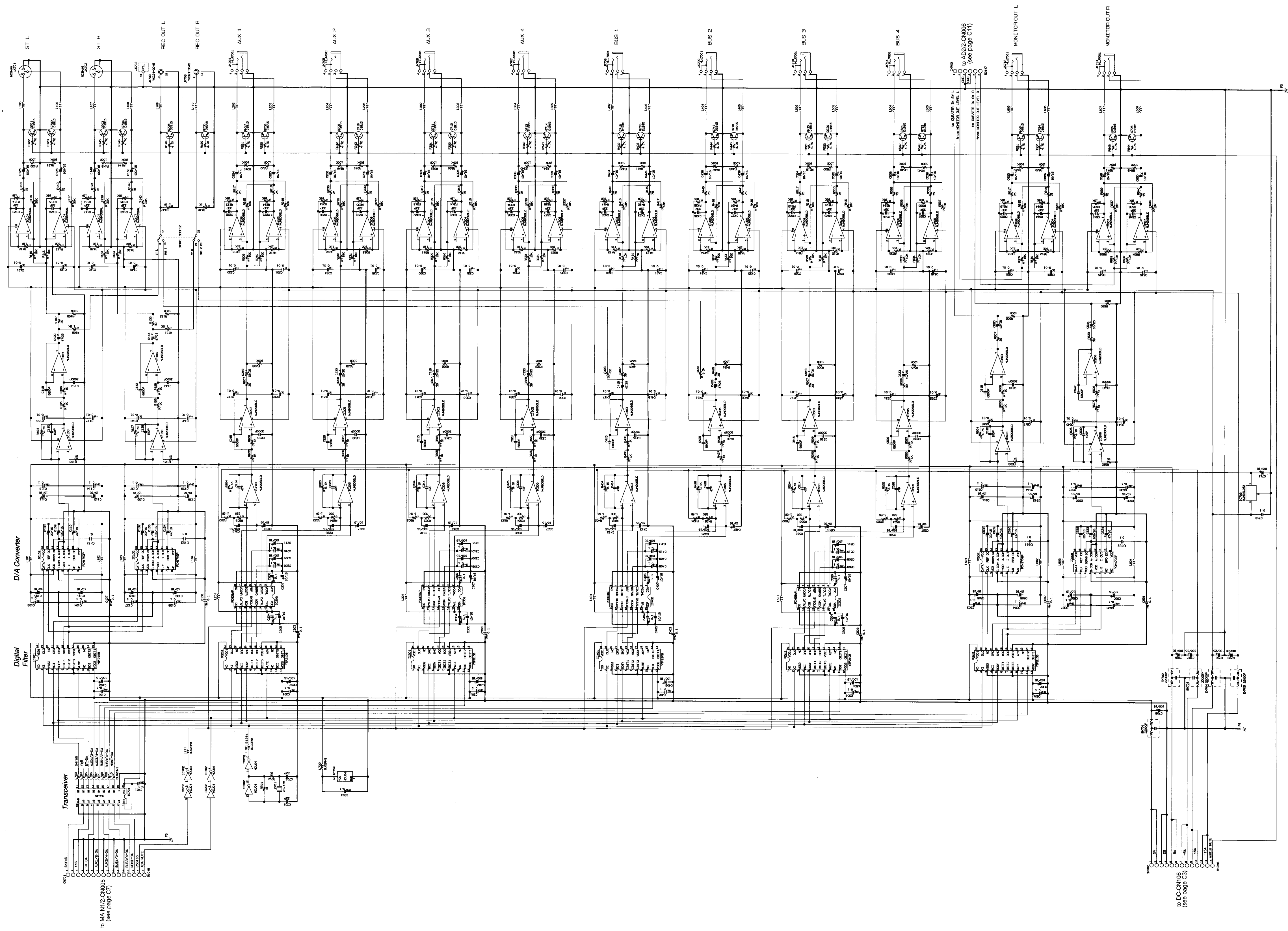


CIRCUIT DIAGRAM (MAIN 1/2-4)

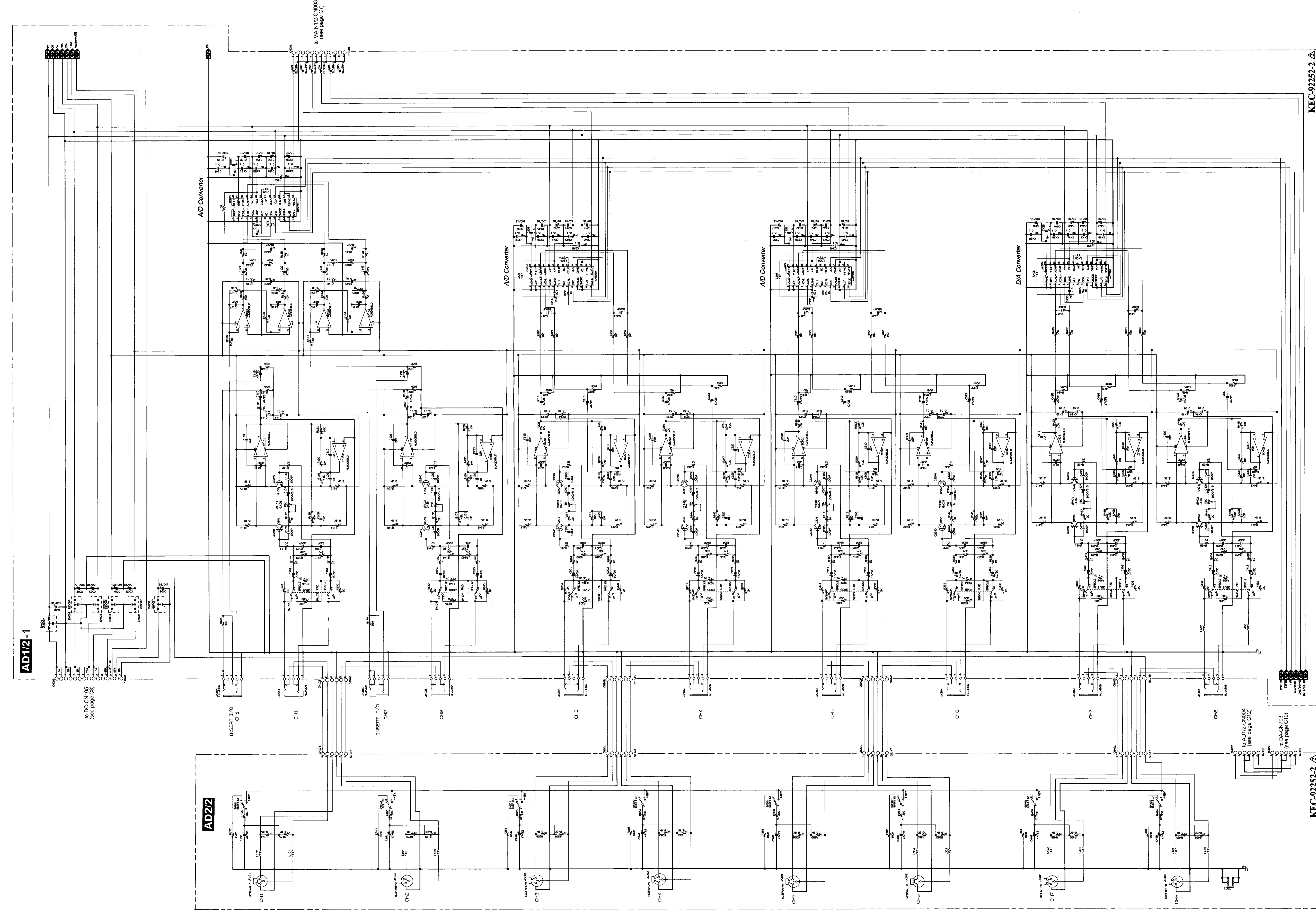
03D



C9



CIRCUIT DIAGRAM (AD 1/2 and AD 2/2)

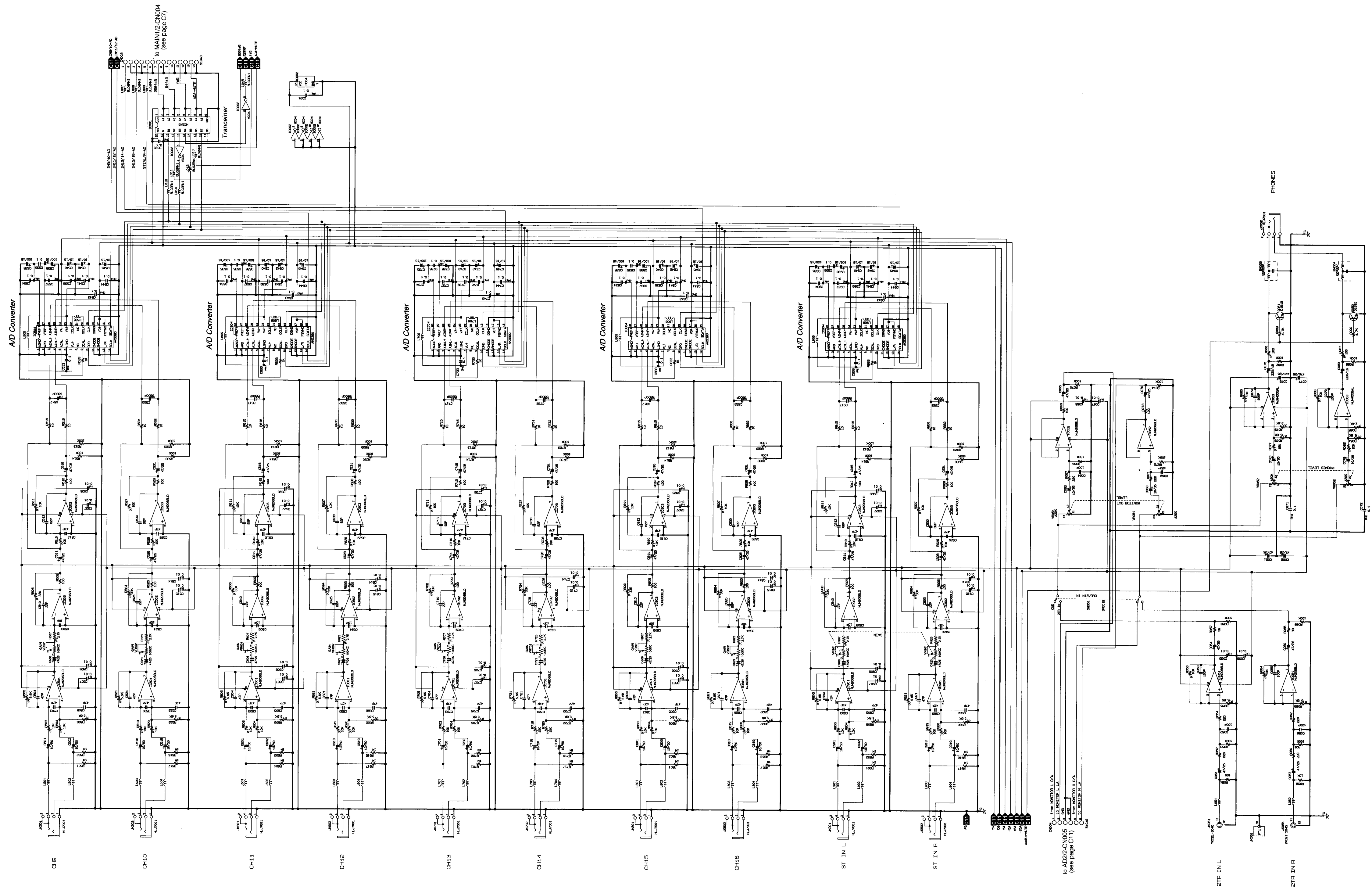


KEC-92252-2

KEC-92252-2

A B C D E F G H I J K L M N O
1 2 3 4 5 6 7 8 9 10
03D
C11

CIRCUIT DIAGRAM (AD 1/2)



2
3
4
5
6
7
8
9
10