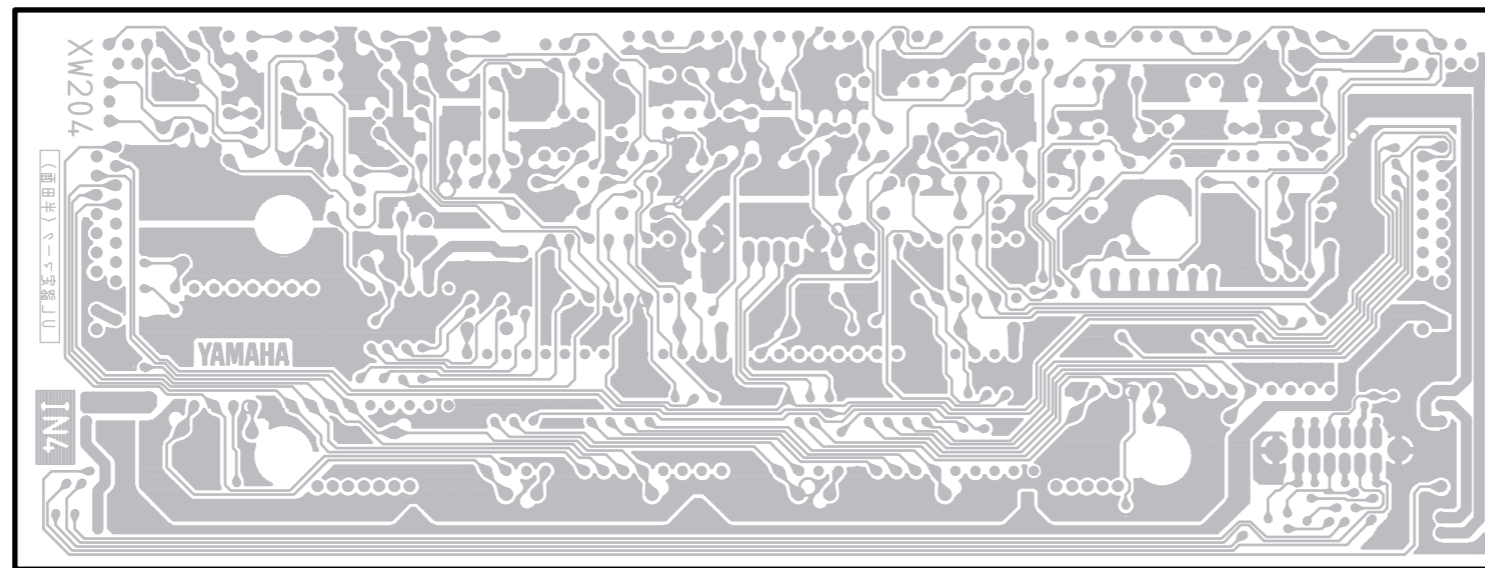
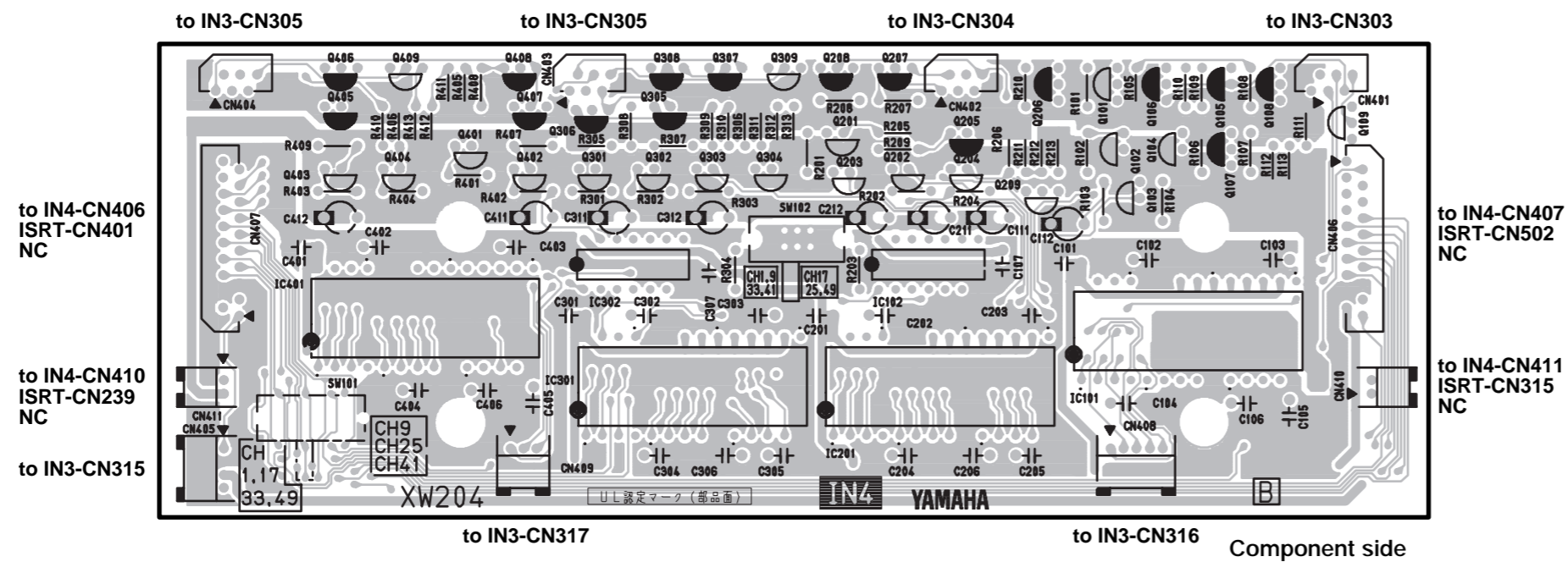
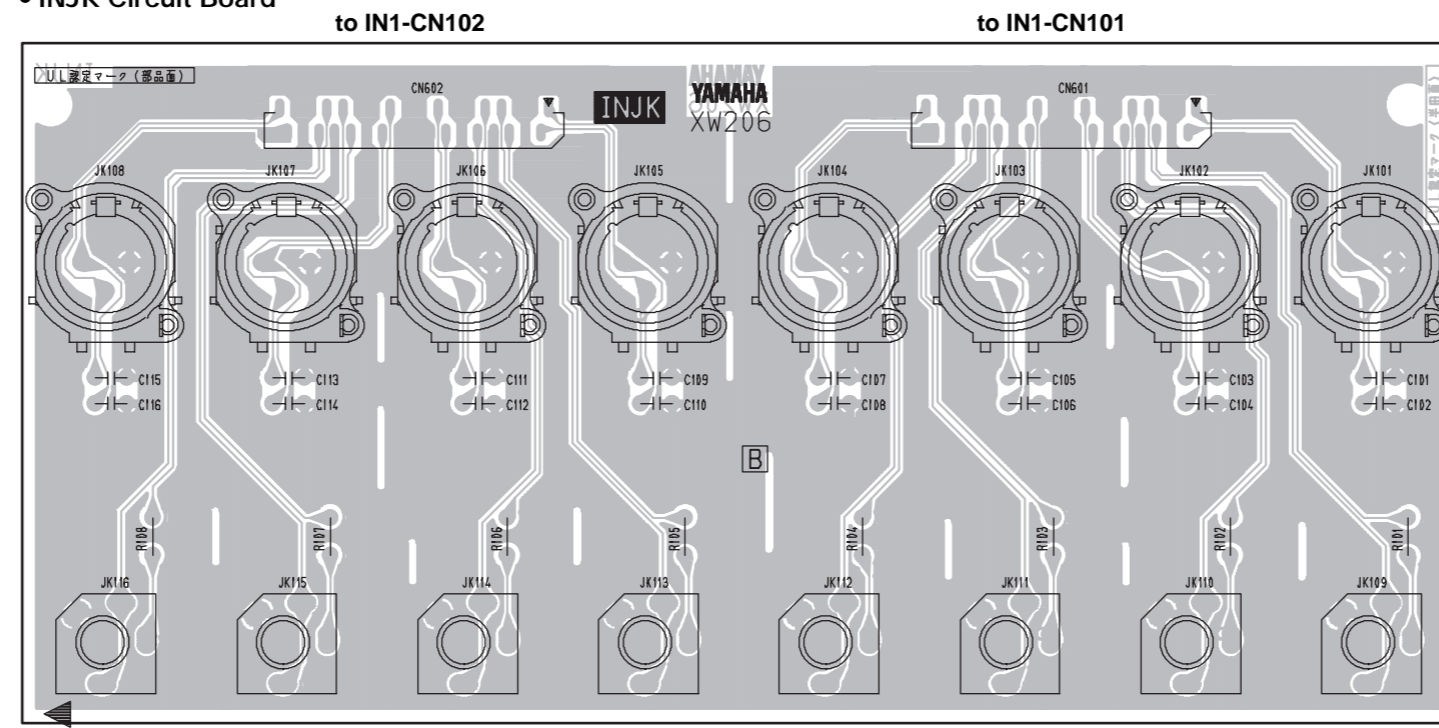


• IN4 Circuit Board



• INJK Circuit Board

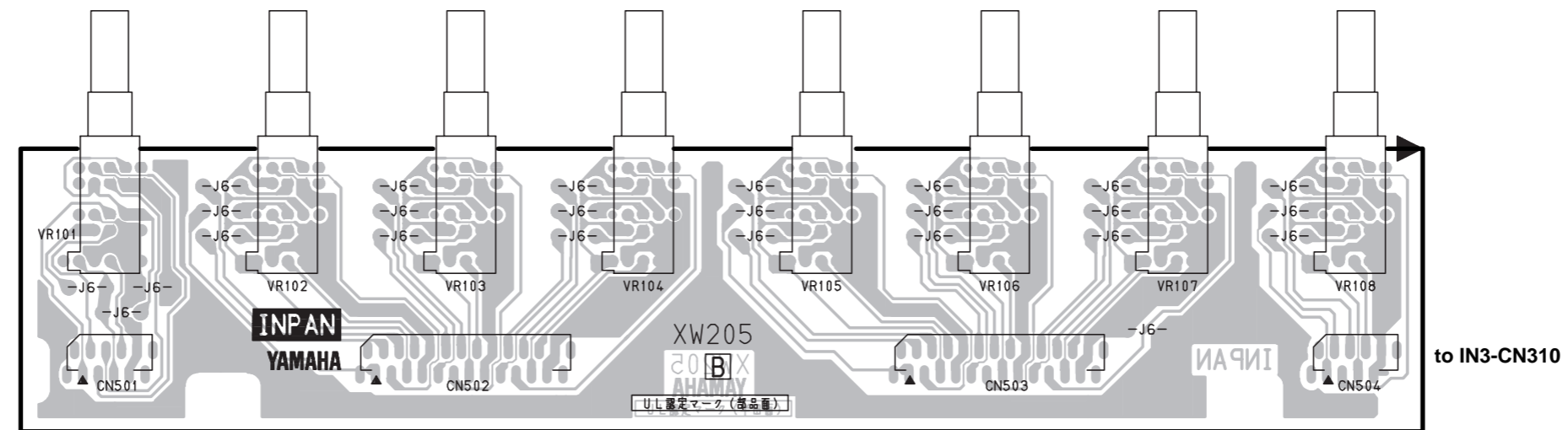


to IN1-CN102

to IN1-CN101

Component side

• INPAN Circuit Board



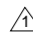
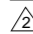
to IN3-CN307

to IN3-CN308

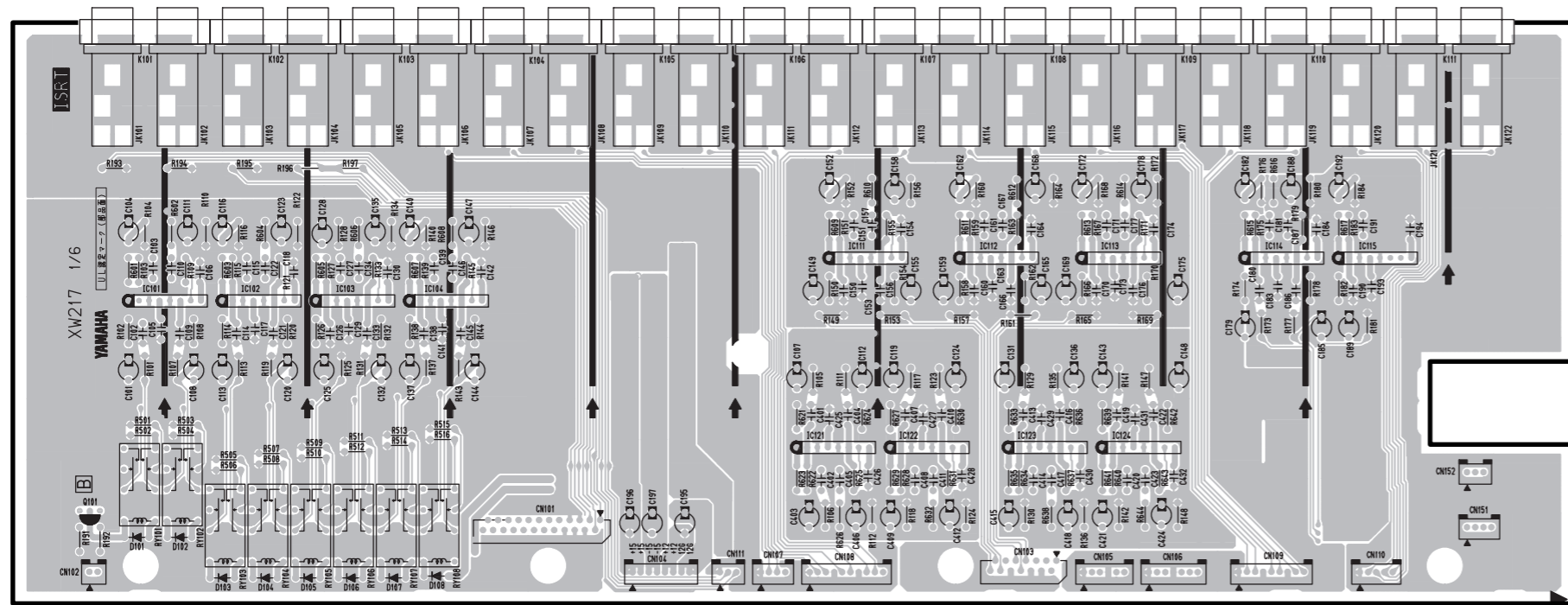
to IN3-CN309

to IN3-CN310

Component side

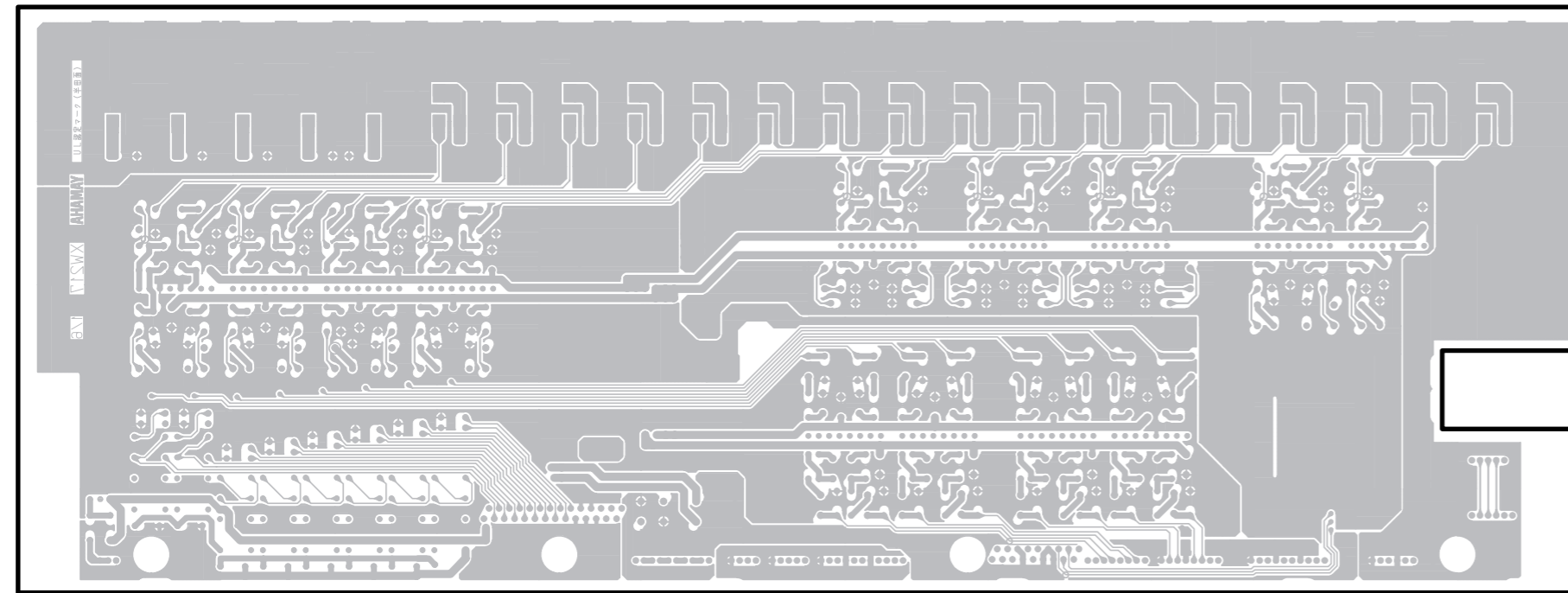
INJK: 3NA-V431270   
 INPAN: 3NA-V431340 

• ISRT 1/6 Circuit Board



to MAS1 -CN104      to ISRT 2/6 -CN234    to ISRT 2/6 -CN236    to MAS1 -CN103    to MAS3 -CN306    to ISRT 2/6 -CN235    to MAS2 -CN202    to MAS2 -CN203    to MAS2 -CN208    to MAS3 -CN307

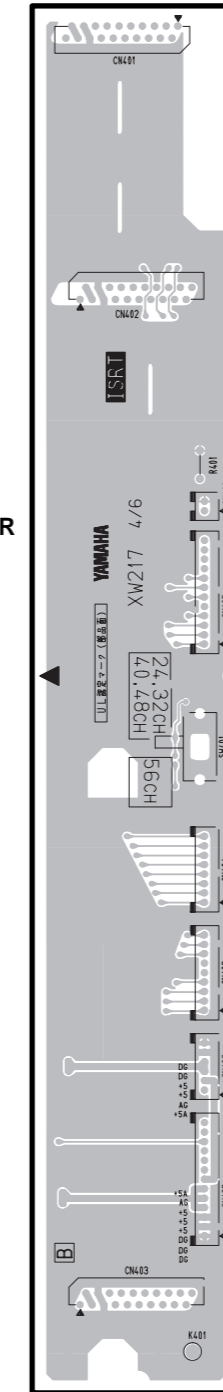
Component side



Pattern side

• ISRT 4/6 Circuit Board

to IN4-CN407



Component side

to ST4 -CN405

to MAS2 -CN211

to CTRL -CN224

to CTRL -CN225

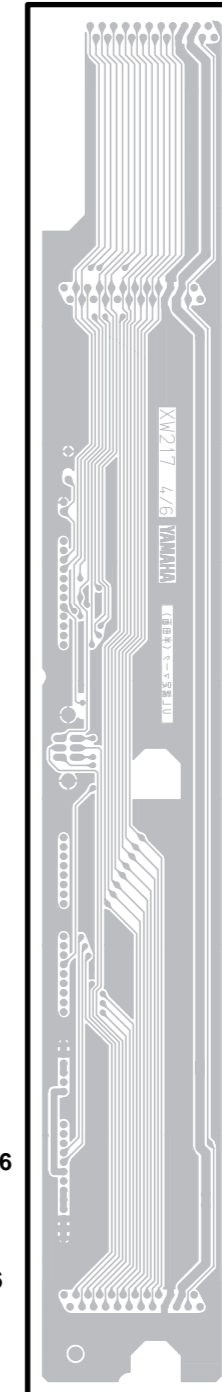
to CTRL -CN226

to CTRL -CN230

to CTRL 2/6 -CN220

to ISRT 5/6 -CN501

Pattern side

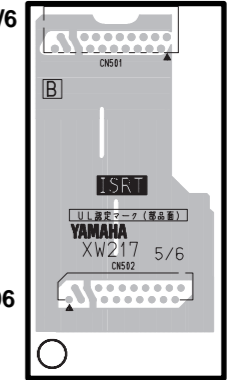


• ISRT 5/6 Circuit Board

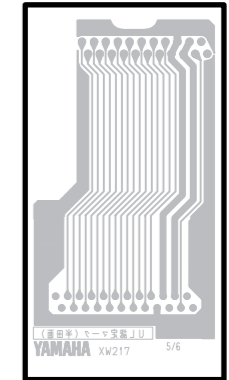
to ISRT 4/6 -CN403

to IN4 -CN406

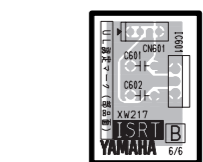
Component side



Pattern side



• ISRT 6/6 Circuit Board



Component side

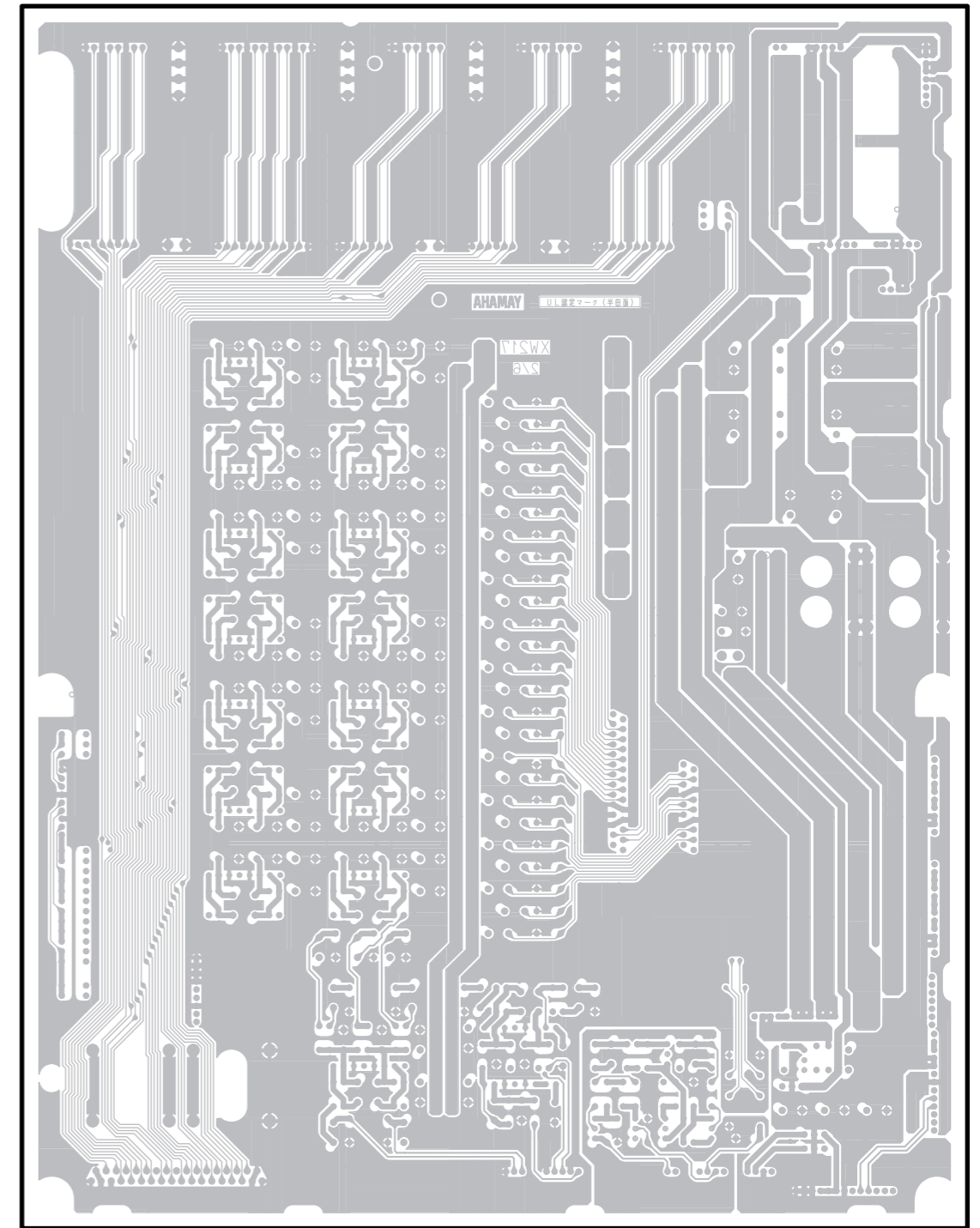
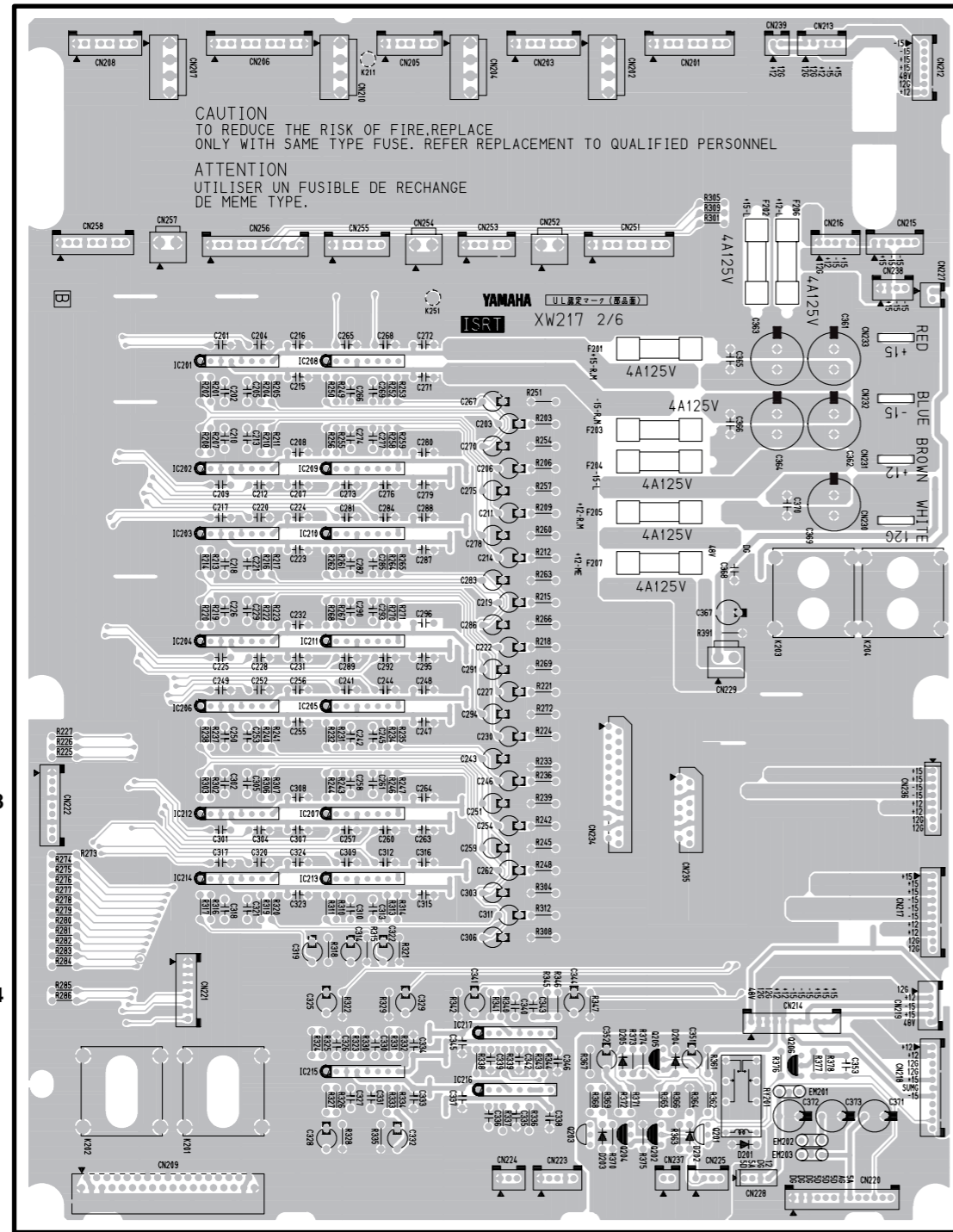


Pattern side



• ISRT 2/6 Circuit Board

- CN208: to IN3(L)-CN312
- CN207: to IN3(\*L)-GND
- CN206: to IN3(L)-CN312
- CN210: to IN2(L)-GND
- CN203: to IN2(L)-CN208
- CN202: to IN2(L)-GND
- CN201: to IN2(L)-CN206



• ISRT 3/6 Circuit Board

