



**Quality and
Innovation
Since 1963**

SERVICE MANUAL YORKVILLE 400B

Before operating this unit, please read this manual thoroughly, and retain it for future use.
Veuillez lire ce manuel attentivement avant d'utiliser l'appareil et le conserver pour consultations ultérieures.

RÉVISÉ 09/95 Printed in Canada

400 B SERVICE MANUAL

SPECIFICATIONS

POWER:

>725W, 4 Ohm load, 1KHz, 2 cycle burst
750W typical

>400W, 4 Ohm load, 1KHz, continuous at 5%THD
440W typical

>300W, 8 Ohm load, 1KHz, continuous at 5%THD
315W typical

Measurements made with regulated 120V supply.

SENSITIVITY:

INPUT 0dB <25mVrms

EFFECTS RETURN <1Vrms
750mVrms typical

DC OFFSET:

<60mV
15mV typical

HUM AND NOISE:

>-90dB below max output voltage, unweighted -94dB typical

Measurement made with GAIN and VOLUME at 5; CONTOUR and EQ off.

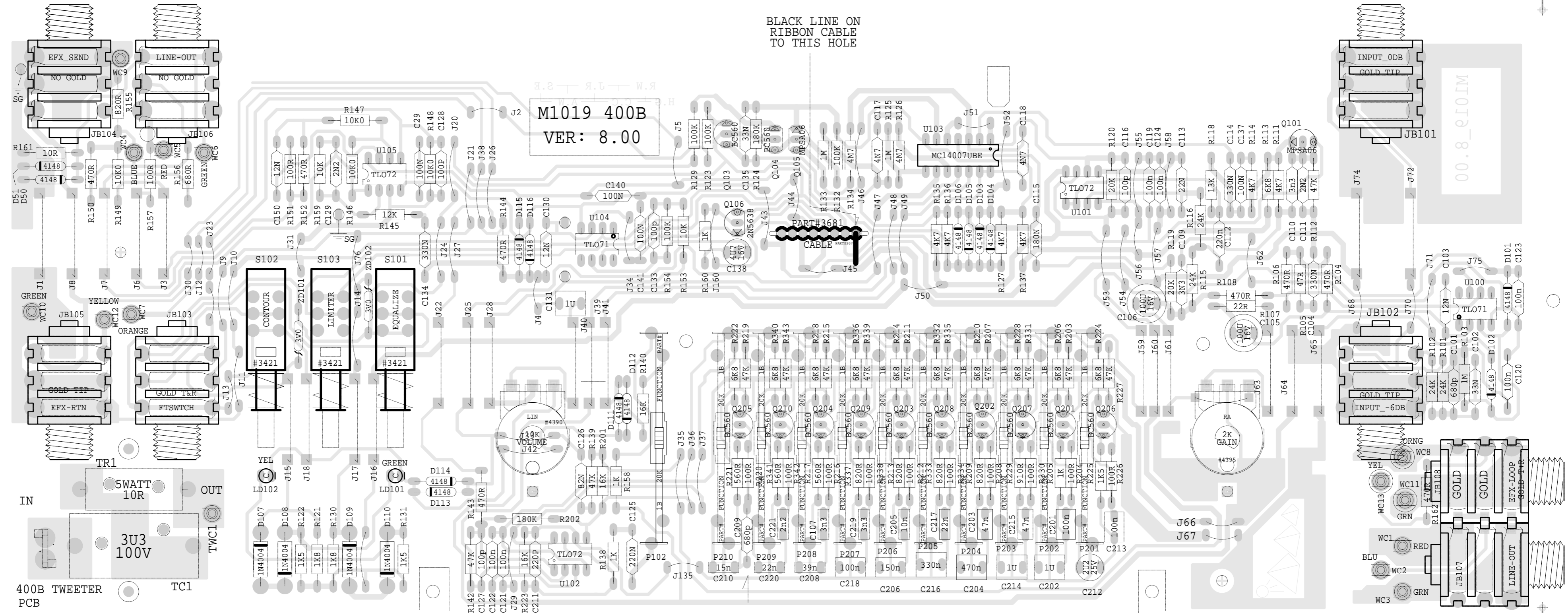
ASSEMBLY M1019-8.00
PCB MECH M1019-8.00

SOLDERSIDE M1019-8.00

ETCH GUIDE

GUIDE ETCH

BLACK LINE ON RIBBON CABLE TO THIS HOLE



BLANK SIZE=15.100" X 6.600"

UP

ETCH GUIDE

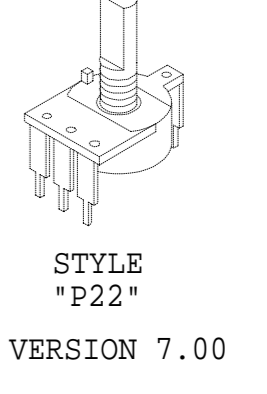
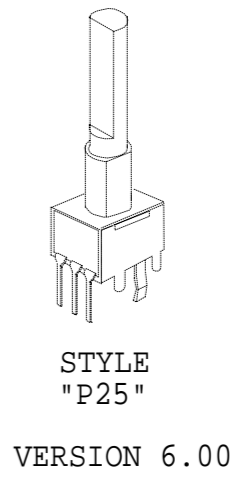
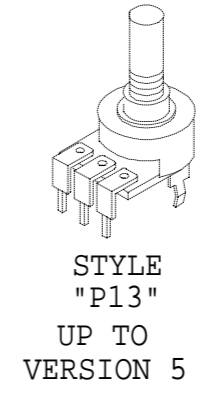
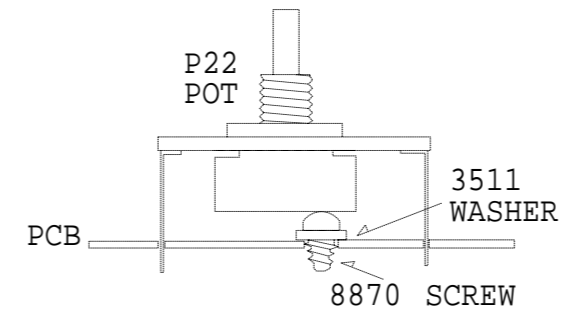
BREAK THIS BOARD AWAY BEFORE SHEARING

M1019.PCB_DATABASE_HISTORY

#	DATE	VER#	DESCRIPTION OF CHANGE
1	JUN/06/97	4.00	PC#4740 MODIFIED SWITCHES
2			AMP-INS TO EYELETS
3	DEC/04/97	5.00	BREAKAWAY PCB FOR TWEETER ADDED
4	DEC/12/97	6.00	ROTARY POTS CHANGED
5	JUN/10/98	7.00	POTS CHANGED TO DETENT STYLE
6	DEC/10/98	8.00	POT_SUPPORT_SCREW_ADDED
7	D	V	N
8	D	V	N
9	D	V	N
10	D	V	N
11	D	V	N

PRODUCTION NOTES

- 1 MAKE SURE THAT THE TRANSISTORS BETWEEN THE SLIDERS DO NOT INTERFERE WITH THE SLIDERS
- 2 C209 MUST NOT TOUCH LEG OF SLIDE POT
- 3 BREAKAWAY TWEETER BOARD IS FOR 400B AND IS DELIVERED TO FINISHING

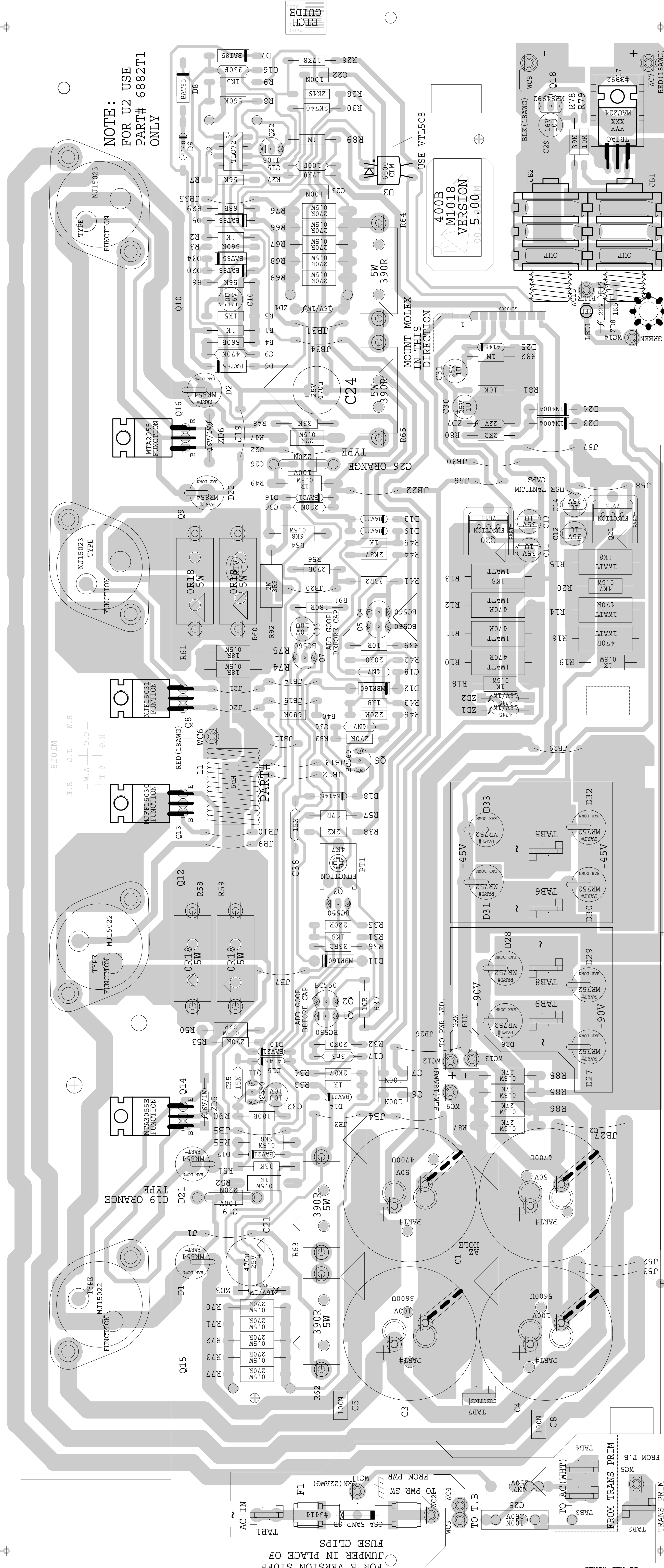


POT STYLES USED

ASSEMBLY M1018-5.00
PCB MECH M1018-5.00

00.2-8101M EDC128ED102

029.VX"029.91=EN12 XMA11B
BLANK SIZE=16.650"X7.950"



M1018.PCB DATABASE HISTORY

MODEL(S) :-	400B-400ES		
#	DATE	VER#	DESCRIPTION OF CHANGE
1	NOV/30/93	3.40	C25 TO 100N
2	APR/02/96	3.50	PC#5050 ADD .470R (R83) _4N7 (C34)
3			BASE TO COLLECTOR Q6
4	JUN/28/96	3.60	PC#5155 R38 3K9-->2K2
5	OCT/15/96	4.00	PC#5221 R83-470K->270R
6	APR/09/97	4.00	PC#5355 ADD 3R9 R92 220N C36
7	JUN/02/98	5.00	PC#5727 C25-SPACING .9" _ADD RTV_HOLES_MOVE_WC15
8			
9			
10			
11			
12			

PRODUCTION NOTES

- 1 U2 USE PART# 6882T1 TEXAS INSTRUMENTS ONLY.
- 2 FOR E VERSION REPLACE FUSE CLIPS WITH A JUMPER WIRE.

FOR E VERSION STUFF JUMPER IN PLACE OF FUSE CLIPS

18 BLACK WIRES

12 RED WIRES

FROM PWR (22AWG) WC1

FROM PWR WC4

FROM PWR WC3

FROM TRANS PRIM WC5

FROM TRANS PRIM WC6

TO T.B WC7

TO AC (WHT) WC8

TO T.B WC9

FROM PWR WC10

FROM PWR WC11

FROM PWR WC12

FROM PWR WC13

FROM PWR WC14

FROM PWR WC15

FROM PWR WC16

FROM PWR WC17

FROM PWR WC18

FROM PWR WC19

FROM PWR WC20

FROM PWR WC21

FROM PWR WC22

FROM PWR WC23

FROM PWR WC24

FROM PWR WC25

FROM PWR WC26

FROM PWR WC27

FROM PWR WC28

FROM PWR WC29

FROM PWR WC30

FROM PWR WC31

FROM PWR WC32

FROM PWR WC33

FROM PWR WC34

FROM PWR WC35

FROM PWR WC36

FROM PWR WC37

FROM PWR WC38

FROM PWR WC39

FROM PWR WC40

FROM PWR WC41

FROM PWR WC42

FROM PWR WC43

FROM PWR WC44

FROM PWR WC45

FROM PWR WC46

FROM PWR WC47

FROM PWR WC48

FROM PWR WC49

FROM PWR WC50

FROM PWR WC51

FROM PWR WC52

FROM PWR WC53

FROM PWR WC54

FROM PWR WC55

FROM PWR WC56

FROM PWR WC57

FROM PWR WC58

FROM PWR WC59

FROM PWR WC60

FROM PWR WC61

FROM PWR WC62

FROM PWR WC63

FROM PWR WC64

FROM PWR WC65

FROM PWR WC66

FROM PWR WC67

FROM PWR WC68

FROM PWR WC69

FROM PWR WC70

FROM PWR WC71

FROM PWR WC72

FROM PWR WC73

FROM PWR WC74

FROM PWR WC75

FROM PWR WC76

FROM PWR WC77

FROM PWR WC78

FROM PWR WC79

FROM PWR WC80

FROM PWR WC81

FROM PWR WC82

FROM PWR WC83

FROM PWR WC84

FROM PWR WC85

FROM PWR WC86

FROM PWR WC87

FROM PWR WC88

FROM PWR WC89

FROM PWR WC90

FROM PWR WC91

FROM PWR WC92

FROM PWR WC93

FROM PWR WC94

FROM PWR WC95

FROM PWR WC96

FROM PWR WC97

FROM PWR WC98

FROM PWR WC99

FROM PWR WC100

FROM PWR WC101

FROM PWR WC102

FROM PWR WC103

FROM PWR WC104

FROM PWR WC105

FROM PWR WC106

FROM PWR WC107

FROM PWR WC108

FROM PWR WC109

FROM PWR WC110

FROM PWR WC111

FROM PWR WC112

FROM PWR WC113

FROM PWR WC114

FROM PWR WC115

FROM PWR WC116

FROM PWR WC117

FROM PWR WC118

FROM PWR WC119

FROM PWR WC120

FROM PWR WC121

FROM PWR WC122

FROM PWR WC123

FROM PWR WC124

FROM PWR WC125

FROM PWR WC126

FROM PWR WC127

FROM PWR WC128

FROM PWR WC129

FROM PWR WC130

FROM PWR WC131

FROM PWR WC132

FROM PWR WC133

FROM PWR WC134

FROM PWR WC135

FROM PWR WC136

FROM PWR WC137

FROM PWR WC138

FROM PWR WC139

FROM PWR WC140

FROM PWR WC141

FROM PWR WC142

FROM PWR WC143

FROM PWR WC144

FROM PWR WC145

FROM PWR WC146

FROM PWR WC147

FROM PWR WC148

FROM PWR WC149

FROM PWR WC150

FROM PWR WC151

FROM PWR WC152

FROM PWR WC153

FROM PWR WC154

FROM PWR WC155

FROM PWR WC156

FROM PWR WC157

FROM PWR WC158

FROM PWR WC159

FROM PWR WC160

FROM PWR WC161

FROM PWR WC162

FROM PWR WC163

FROM PWR WC164

FROM PWR WC165

FROM PWR WC166

FROM PWR WC167

FROM PWR WC168

FROM PWR WC169

FROM PWR WC170

FROM PWR WC171

FROM PWR WC172

FROM PWR WC173

FROM PWR WC174

FROM PWR WC175

FROM PWR WC176

FROM PWR WC177

FROM PWR WC178

FROM PWR WC179

FROM PWR WC180

FROM PWR WC181

FROM PWR WC182

FROM PWR WC183

FROM PWR WC184

FROM PWR WC185

FROM PWR WC186

FROM PWR WC187

FROM PWR WC188

FROM PWR WC189

FROM PWR WC190

FROM PWR WC191

FROM PWR WC192

FROM PWR WC193

FROM PWR WC194

FROM PWR WC195

FROM PWR WC196

FROM PWR WC197

FROM PWR WC198

FROM PWR WC199

FROM PWR WC200

FROM PWR WC201

FROM PWR WC202

FROM PWR WC203

FROM PWR WC204

FROM PWR WC205

FROM PWR WC206

FROM PWR WC207

FROM PWR WC208

FROM PWR WC209

FROM PWR WC210

FROM PWR WC211

FROM PWR WC212

FROM PWR WC213

FROM PWR WC214

FROM PWR WC215

FROM PWR WC216

FROM PWR WC217

FROM PWR WC218

FROM PWR WC219

FROM PWR WC220

FROM PWR WC221

FROM PWR WC222

FROM PWR WC223

FROM PWR WC224

FROM PWR WC225

FROM PWR WC226

FROM PWR WC227

FROM PWR WC228

FROM PWR WC229

FROM PWR WC230

FROM PWR WC231

FROM PWR WC232

FROM PWR WC233

FROM PWR WC234

FROM PWR WC235

FROM PWR WC236