



**Quality and
Innovation
Since 1963**

SERVICE MANUAL YORKVILLE 50B

Before operating this unit, please read this manual thoroughly, and retain it for future use.
Veuillez lire ce manuel attentivement avant d'utiliser l'appareil et le conserver pour consultations ultérieures.

RÉVISÉ 06/93 Printed in Canada

50B SERVICE MANUAL

SPECIFICATIONS

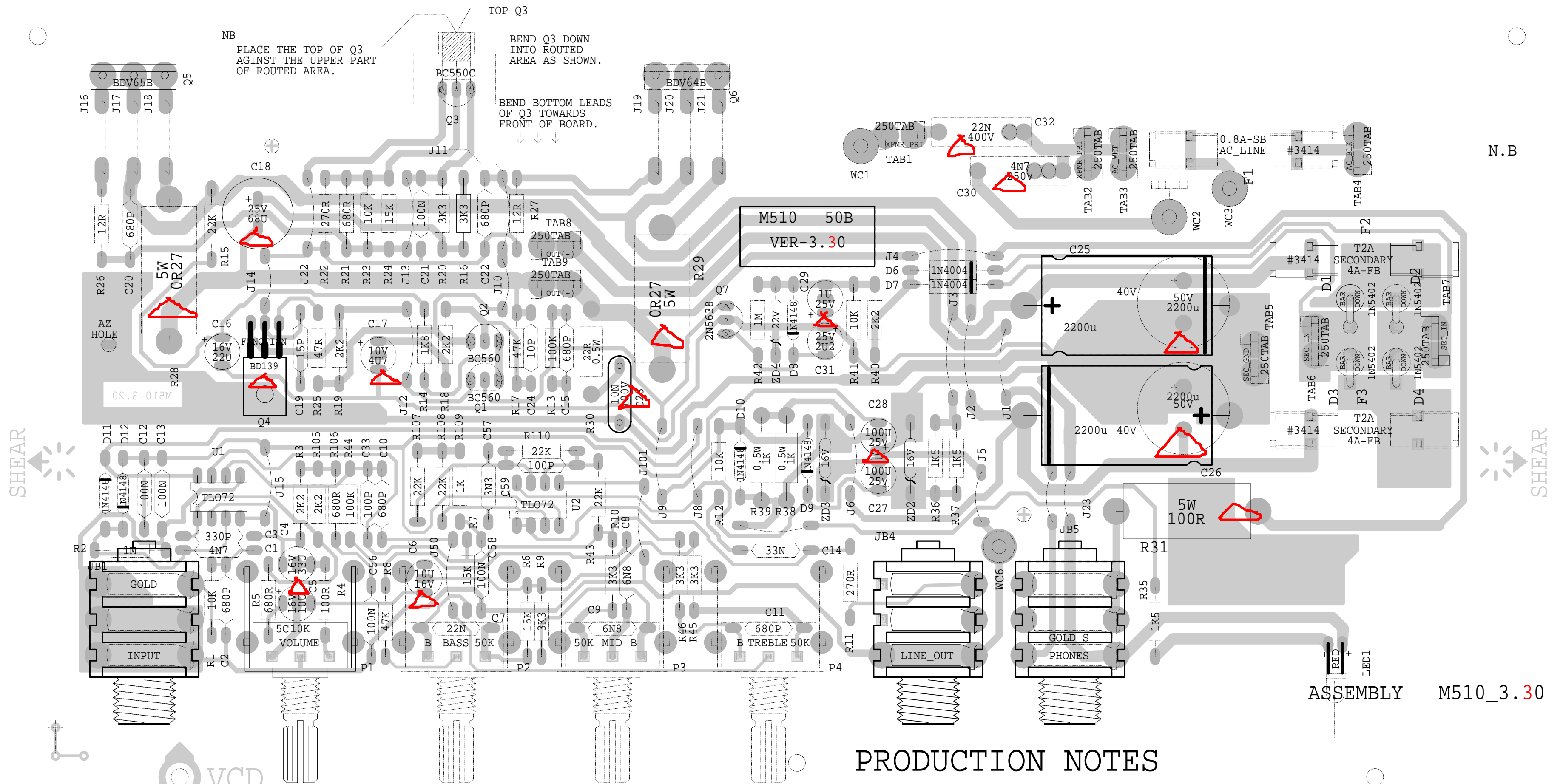
POWER REQUIREMENTS: 117VAC 60Hz 120VA

POWER OUTPUT: 50W, 4 Ohm load, 5%THD, 1KHz

INPUT SENSITIVITY: INPUT <25mVrms
EFFECTS RETURN <1Vrms

SPEAKER: 10 inch, 4 Ohm

BLANK SIZE= 12.250" X 10.925"
 BLANK SIZE= 12.250" X 10.925"



ASSEMBLY M510_3.30

PRODUCTION NOTES

M510.PCB_DATABASE_HISTORY			
MODEL(S):- 50B			
#	DATE	VER#	DESCRIPTION OF CHANGE
1	SEP/12/94	3.10	PC#4625 HOLES ADDED FOR RADIAL PWR SUPPLY CAP
2			
3	MAY/01/95	3.20	PC#4781 D6/D7_BAV21-->1N4004
4	MAY/09/95	3.30	PC#4801_ADD 10P ACROSS R17
5	D	V	NOW_ADDED_IN_AUTO-INSERTION
6	D	V	N
7	D	V	N
8	D	V	N
9	D	V	N
10	D	V	N
11	D	V	N
12	D	V	N
13	D	V	N
14	D	V	N
15	D	V	N
16	D	V	N
17	D	V	N
18	D	V	N
19	D	V	N
20	D	V	N

1 CUT ALL NECESSARY LEADS *THAT ARE PROTRUDING FROM THE BOTTOM OF BOARD SUCH AS WC'S, FUSE HOLDER LEGS, DIODE LEADS, ETC, SO THAT THE DISTANCE BETWEEN BOARD AND CHASSIS COULD BE KEPT TO A MAXIMUM.

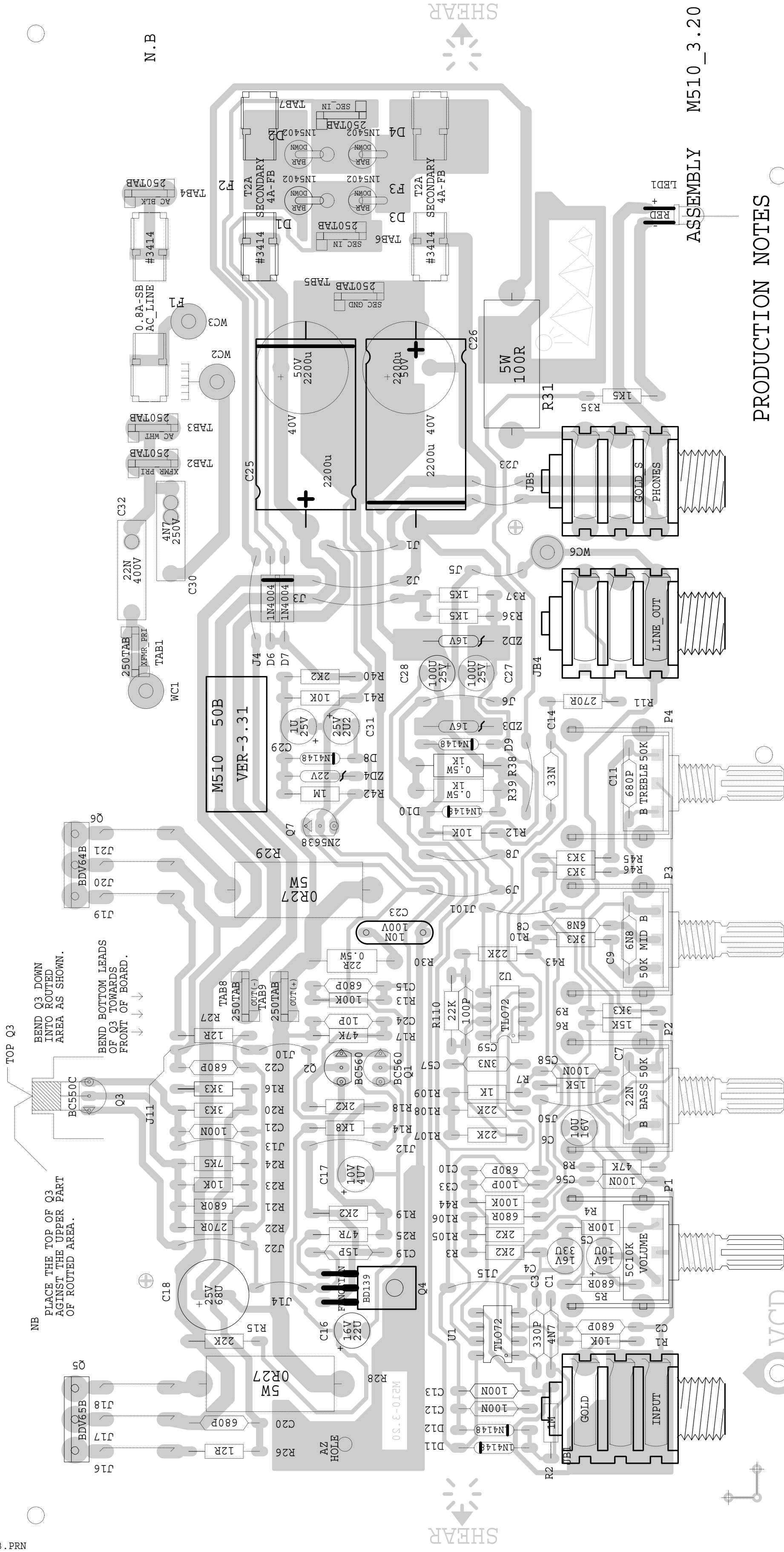
2 WC1 AND WC3 ~~BLACK 18AWG WIRES FOR N.A.~~ ~~BLACK DOUBLE/INSUL. FOR S~~
 WC2=3"GRN AND WC6=5"GRN GREEN WIRES FOR N.A.
 WC6 GRN/YELL WIRE FOR S VERSION ADD TUBING TO S VERSION WIRE
 WC2/WC3 NO WIRE FOR S VERSION

* Fuse holders no longer need trimming
 - However, leads should be no longer than the length of the fuse holders

3 DO NOT STUFF C30 OR F1 FUSEHOLDER FOR S VERSION

4 For "s" ver. secondary fuses. Use # 2403 (T2A)

"250.01X" 02S.SI =E12 KMAJB
 BLANK SIZE= 12.250" X 10.925"



PRODUCTION NOTES

- 1 CUT ALL NECESSARY LEADS THAT ARE PROTRUDING FROM THE BOTTOM OF THE BOARD SUCH AS WC'S, FUSEHOLDER LEGS, DIODE LEADS ETC SO THAT THE DISTANCE BETWEEN BOARD AND CHASSIS WILL BE KEPT TO A MAXIMUM
- 2 WC1 AND WC3 BLACK 18 AWG WIRES FOR N.A. BLACK DOUBLE/INSUL FOR S WC2=3"GRN AND WC6=5"GRN GREEN WIRES FOR N.A. WC6 GRN/YELL WIRE FOR S VERSION ADD TUBING TO S VERSION WIRE WC2/WC3 NO WIRE FOR S VERSION
- 3 DO NOT STUFF C30 OR F1 FUSEHOLDER FOR S VERSION

M510.PCB POT LIST

MODEL(S) :- BM50

M510.PCB DATABASE HISTORY

MODEL(S) :- 50B

#	DATE	VER#	DESCRIPTION OF CHANGE	REF	FUNCTION	PART#	KNOB	AS OF
1	SEP/12/94	3.10	PC#4625 HOLES ADDED FOR RADIAL PWR SUPPLY CAP	P1	VOLUME	#4409	#8693	DEC/99
2	MAY/01/95	3.20	PC#4781 D6/D7 BAV21-->1N4004	P2	BASS	#4406	#8693	DEC/99
3	MAY/09/95	3.30	PC#4801-ADD 10P ACROSS R17 NOW ADDED IN AUTO-INSERTION	P3	MID	#4406	#8693	DEC/99
4	DEC/02/99	3.31	PC#167_R24_I5K->7K5	P4	TREBLE	P	K	N
5	D	V		R	F	P	K	N
6	D	V		R	F	P	K	N
7	D	V		R	F	P	K	N
8	D	V		R	F	P	K	N
9	D	V		R	F	P	K	N
10	D	V		R	F	P	K	N
11	D	V		R	F	P	K	N
12	D	V		R	F	P	K	N
13	D	V		R	F	P	K	N
14	D	V		R	F	P	K	N
15	D	V		R	F	P	K	N
16	D	V		R	F	P	K	N
17	D	V		R	F	P	K	N
18	D	V		R	F	P	K	N
19	D	V		R	F	P	K	N
20	D	V		R	F	P	K	N