

PULSE by Yorkville



SERVICE MANUAL

Sept /98 pu-serv1.pdf Version1.5

WORLD HEADQUARTERS CANADA

Yorkville Sound
550 Granite Court
Pickering, Ontario
L1W-3Y8 CANADA

Voice: (905) 837-8481
Fax: (905) 837-8746

U.S.A.

Yorkville Sound Inc.
4625 Witmer Industrial Estate
Niagara Falls, New York
14305 USA

Voice: (716) 297-2920
Fax: (716) 297-3689



Quality and Innovation Since 1963
Made in Canada

| | |
|-----------|--|
| PL8 | M435C Schematic M435C PCB |
| PL10/PM10 | M435 Schematic M435 PCB |
| PL1070V | M435D Schematic M435D PCB |
| PL12/PM12 | M435 Schematic M435 PCB |
| PL315 | M535 Schematic M535 PCB |
| PL3215 | M535A Schematic M535A PCB |
| PR315 | M536 Schematic M536 PCB |
| PR418 | M537 Schematic M537 PCB |
| PS18 | M534 Schematic M534 PCB |
| PS110P | M530 Schematic M530 PCB |
| PS210P | M508A Schematic M508A PCB M509 Schematic M509 PCB |
| PS210PX | M508C Schematic M508C PCB M532 Schematic M532 PCB |
| PS218P | M508A Schematic M508A PCB M531 Schematic M531 PCB |

PULSE

PROFESSIONAL AUDIO SYSTEMS by YORKVILLE SOUND

IMPORTANT SAFETY INSTRUCTIONS



INSTRUCTIONS PERTAINING TO A RISK OF FIRE, ELECTRIC SHOCK, OR INJURY TO PERSONS.

INSTRUCTIONS RELATIVES AU RISQUE DE FEU, CHOC ÉLECTRIQUE, OU BLESSURES AUX PERSONNES.

CAUTION:

DO NOT REMOVE COVER (OR BACK). NO USER SERVICEABLE PARTS INSIDE.

REFER SERVICING TO QUALIFIED SERVICE PERSONNEL.

AFIN DE RÉDUIRE LES RISQUE DE CHOC ÉLECTRIQUE, N'ENLEVEZ PAS LE COUVERT (OU NE CONTIENT AUCUNE PIÈCE RÉPARABLE PAR L'UTILISATEUR.

CONSULTEZ UN TECHNICIEN QUALIFIÉ POUR L'ENTRETIEN.

Read Instructions:

The *Owner's Manual* should be read and understood before operation of your unit. Please, save these instructions for future reference.

Packaging:

Keep the box and packaging materials, in case the unit needs to be returned for service.

Warning:

When using electric products, basic precautions should always be followed, including the following:

Power Sources:

Your unit should be connected to a power source only of the voltage specified in the owners manual or as marked on the unit. This unit has a polarized plug. Do not use with an extension cord or receptacle unless all three blades can be fully inserted to prevent blade exposure. Precautions should be taken so that the grounding scheme on the unit is not defeated.

Power Cord:

The AC supply cord should be routed so that it is unlikely that it will be damaged. If the AC supply cord is damaged **DO NOT OPERATE THE UNIT.**

Service:

The unit should be serviced only by qualified service personnel.

Veillez lire le manuel:

Il contient des informations qui devraient étre comprises avant l'opération de votre appareil. Conservez S.V.P. ces instructions pour consultations ultérieures

Emballage:

Conservez la boîte au cas ou l'appareil devait étre retourner pour réparation.

Warning:

Attention: Lors de l'utilisation de produits électrique, assurez-vous d'adhérer à des précautions de bases incluant celle qui suivent:

Alimentation:

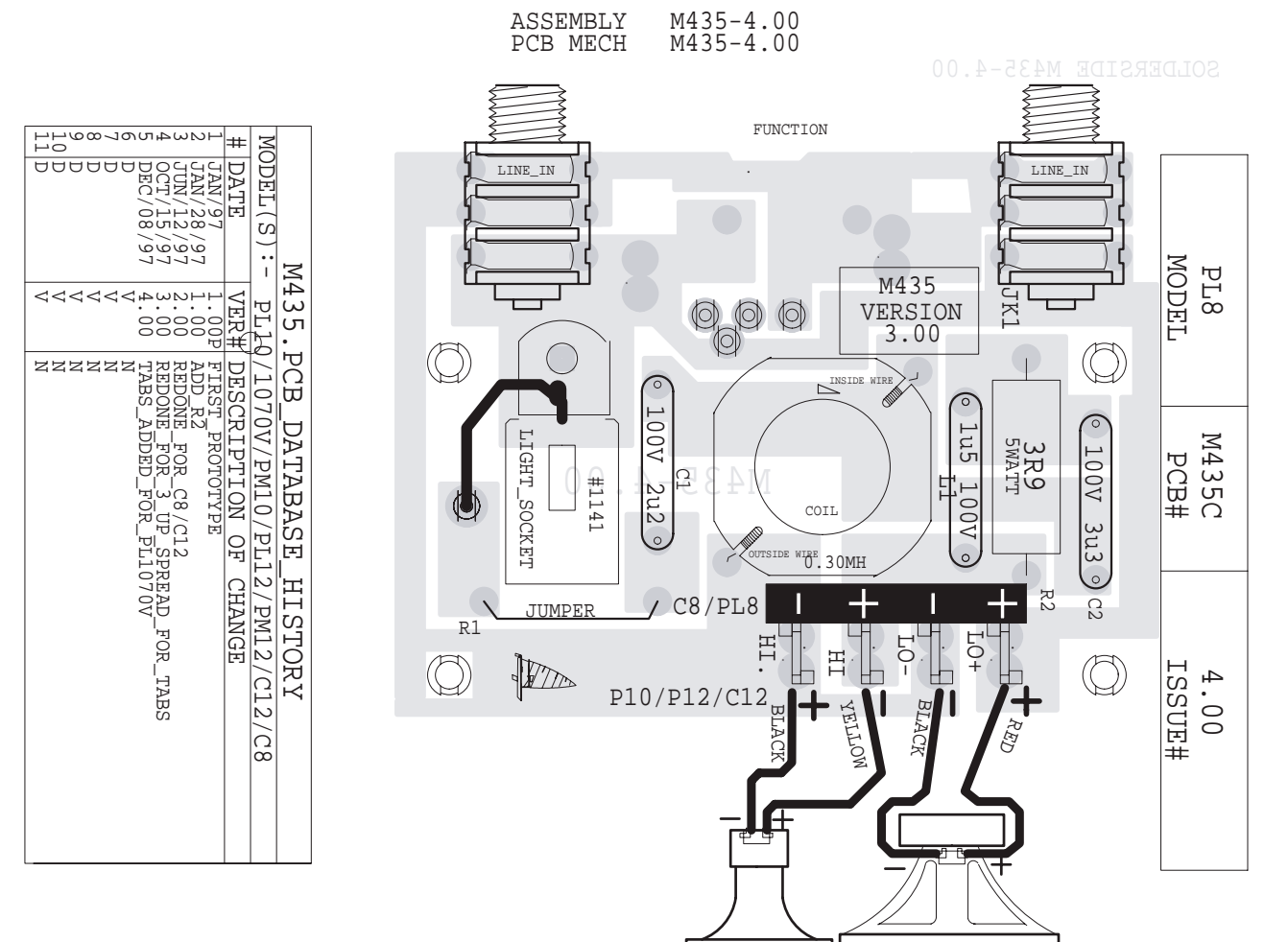
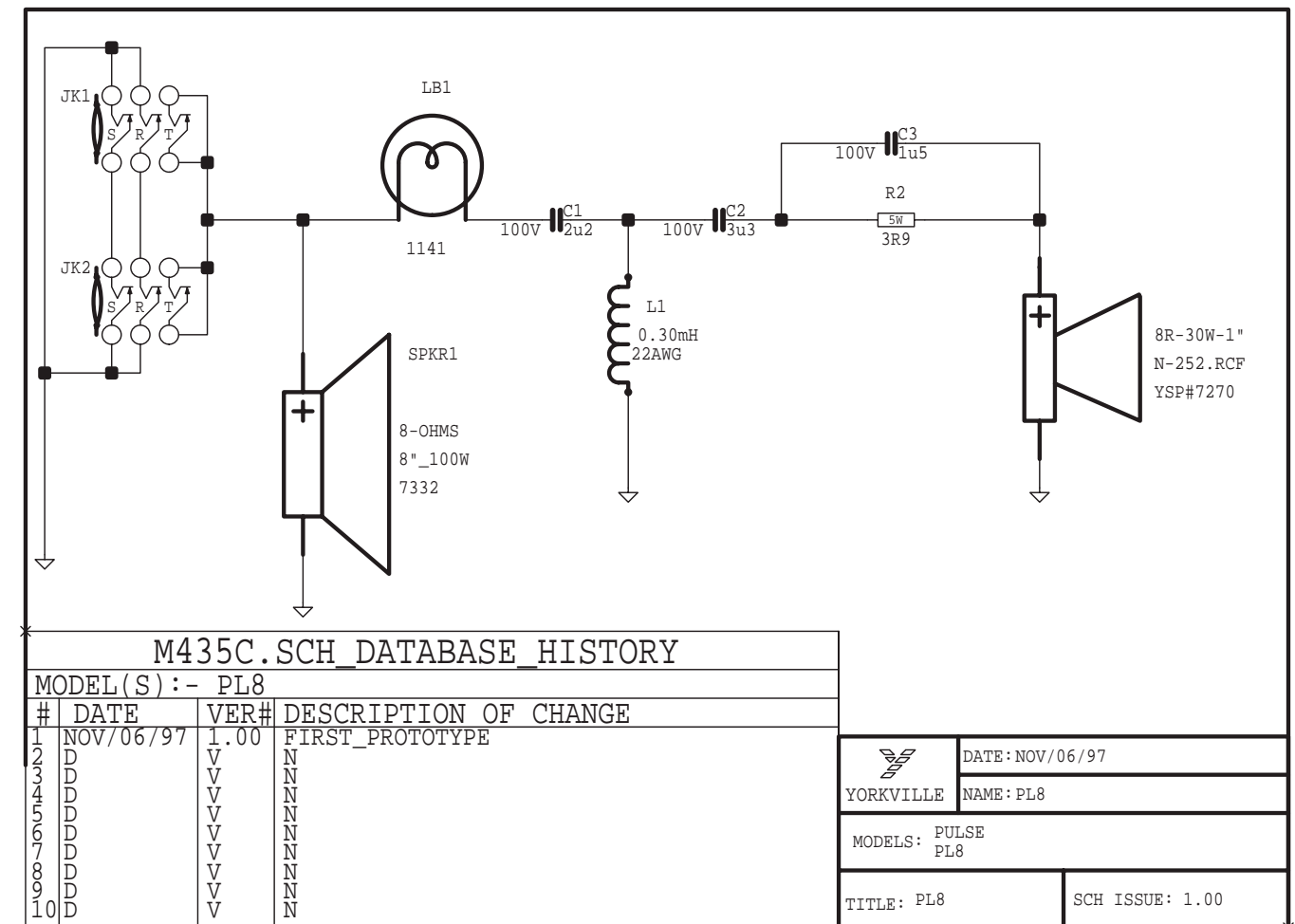
L'appareil ne doit étre branché qu'à une source d'alimentation correspondant au voltage spécifié dans le manuel ou tel qu'indiqué sur l'appareil. Cet appareil est équipé d'une prise d'alimentation polarisée. Ne pas utiliser cet appareil avec un cordon de raccordement à moins qu'il soit possible d'insérer complètement les trois lames. Des précautions doivent étre prises afin d'éviter que le système de mise à la terre de l'appareil ne soit désengagé.

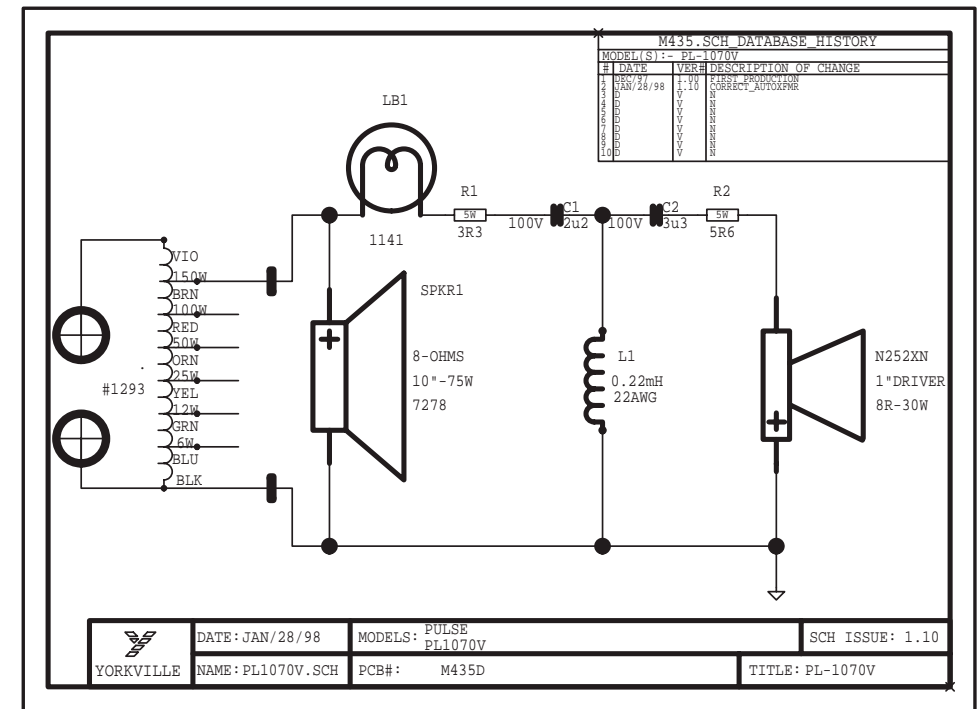
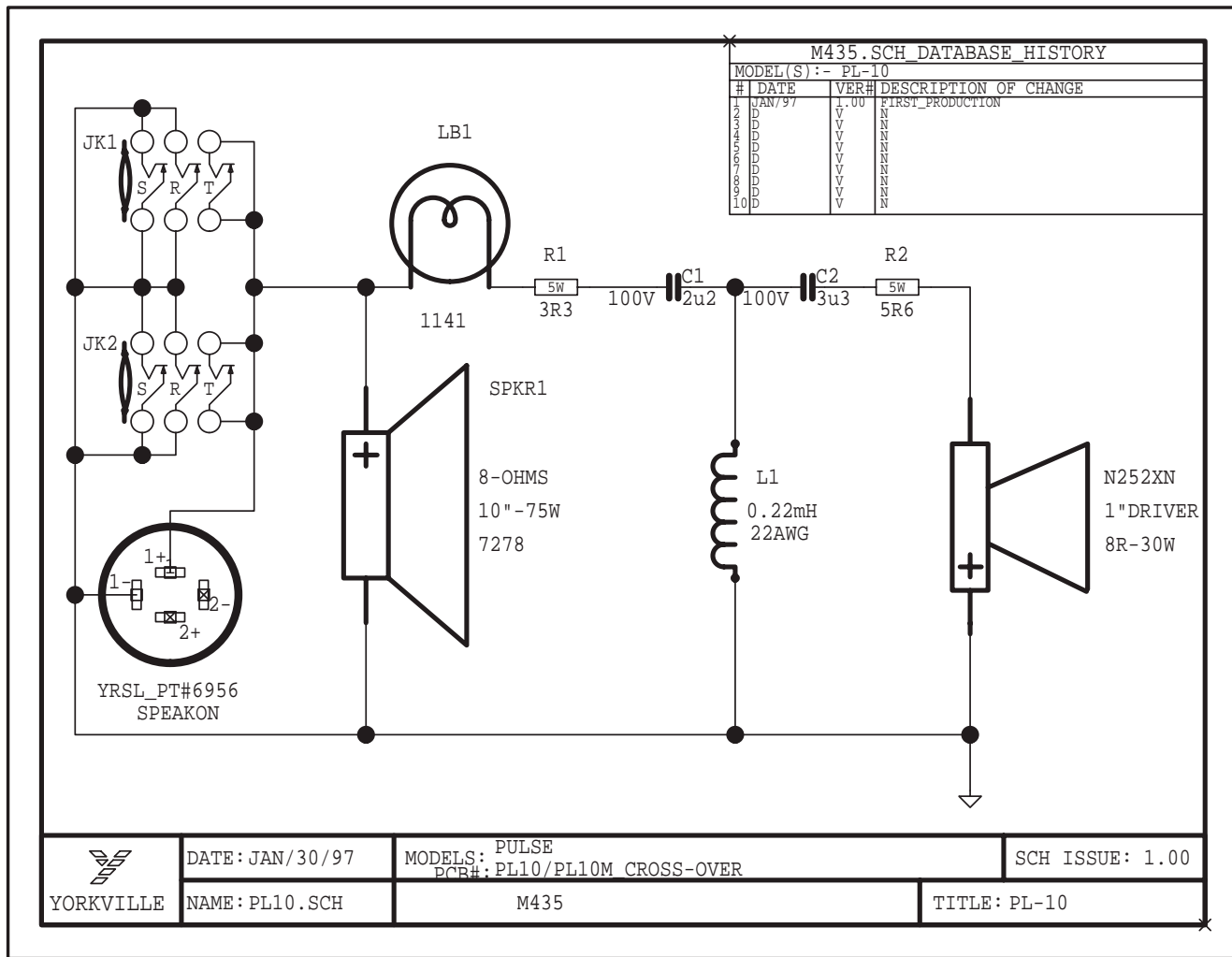
Cordon d'alimentation:

Évitez d'endommager le cordon d'alimentation. **N'UTILISEZ PAS L'APPAREIL** si le cordon d'alimentation est endommagé.

Service:

Consultez un technicien qualifié pour l'entretien de votre appareil.



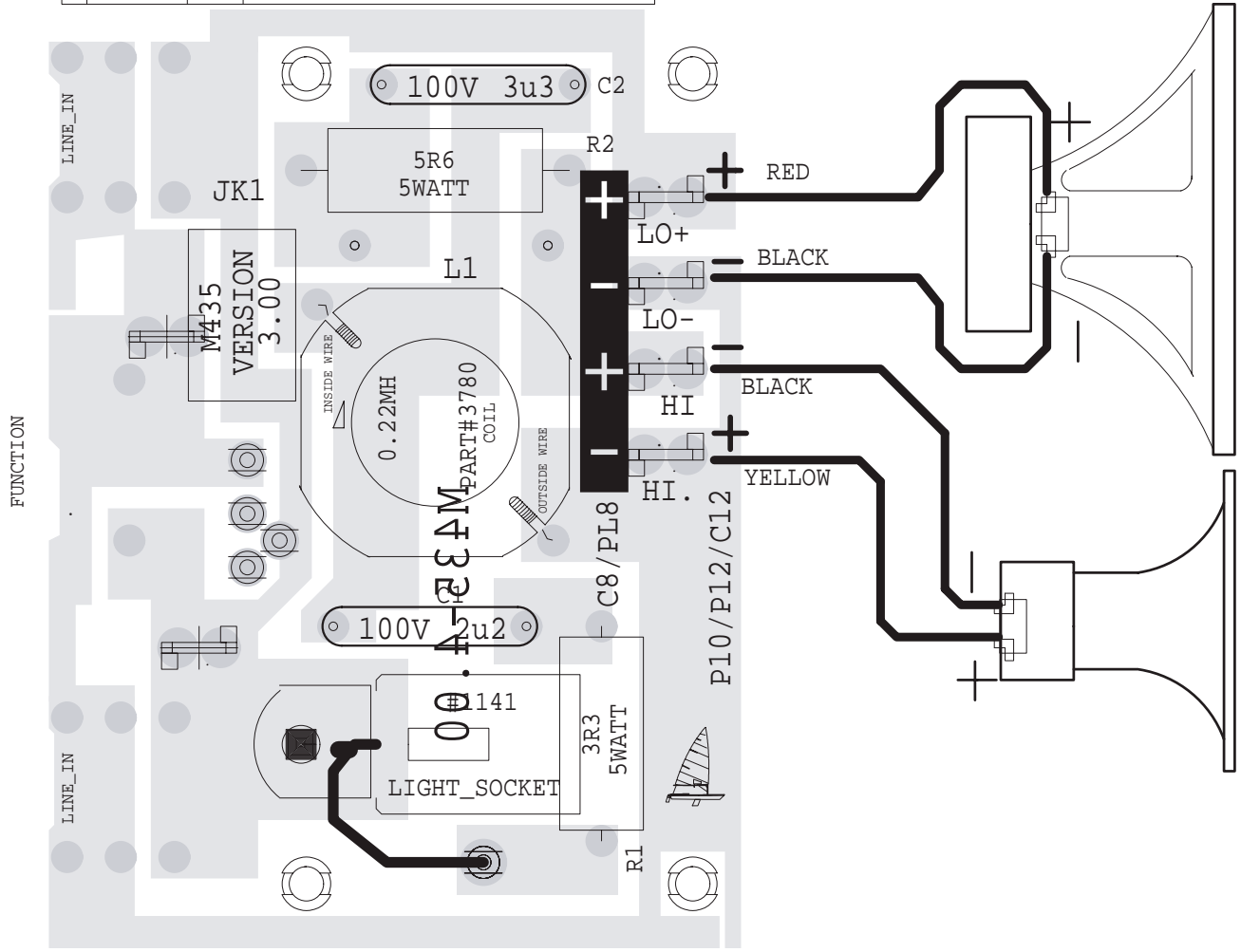
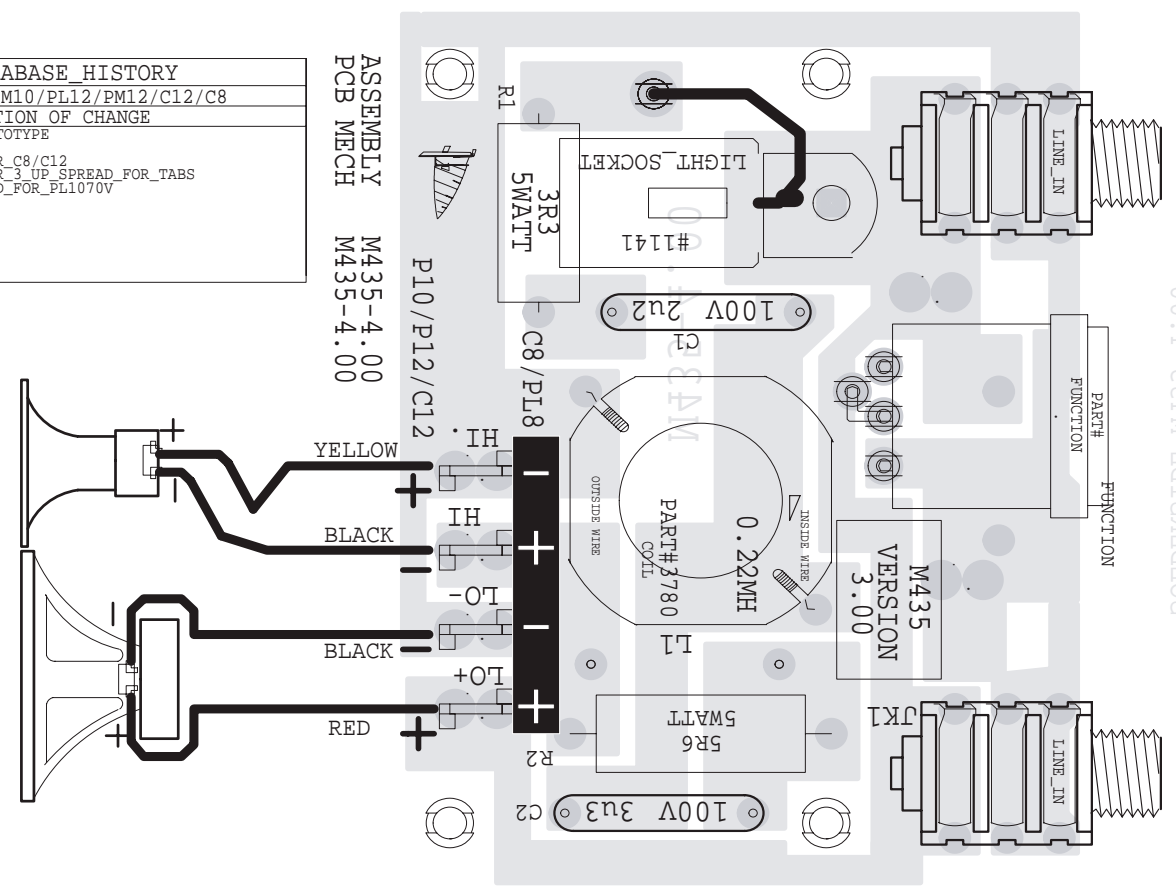


| M435.PCB_DATABASE_HISTORY | | | |
|---|-----------|-------|---------------------------------|
| MODEL(S):- PL10/1070V/PM10/PL12/PM12/C12/C8 | | | |
| # | DATE | VER# | DESCRIPTION OF CHANGE |
| 1 | JAN/97 | 1.00P | FIRST PROTOTYPE |
| 2 | JAN/28/97 | 1.00 | ADD R2 |
| 3 | JUN/12/97 | 2.00 | REDONE FOR C8/C12 |
| 4 | OCT/15/97 | 3.00 | REDONE FOR 3 UP SPREAD FOR TABS |
| 5 | DEC/08/97 | 4.00 | TABS_ADDED_FOR_PL1070V |
| 6 | | | |
| 7 | | | |
| 8 | | | |
| 9 | | | |
| 10 | | | |
| 11 | | | |

| | | |
|---------|-------|--------|
| PL1070V | M435D | 4.00 |
| MODEL | PCB# | ISSUE# |

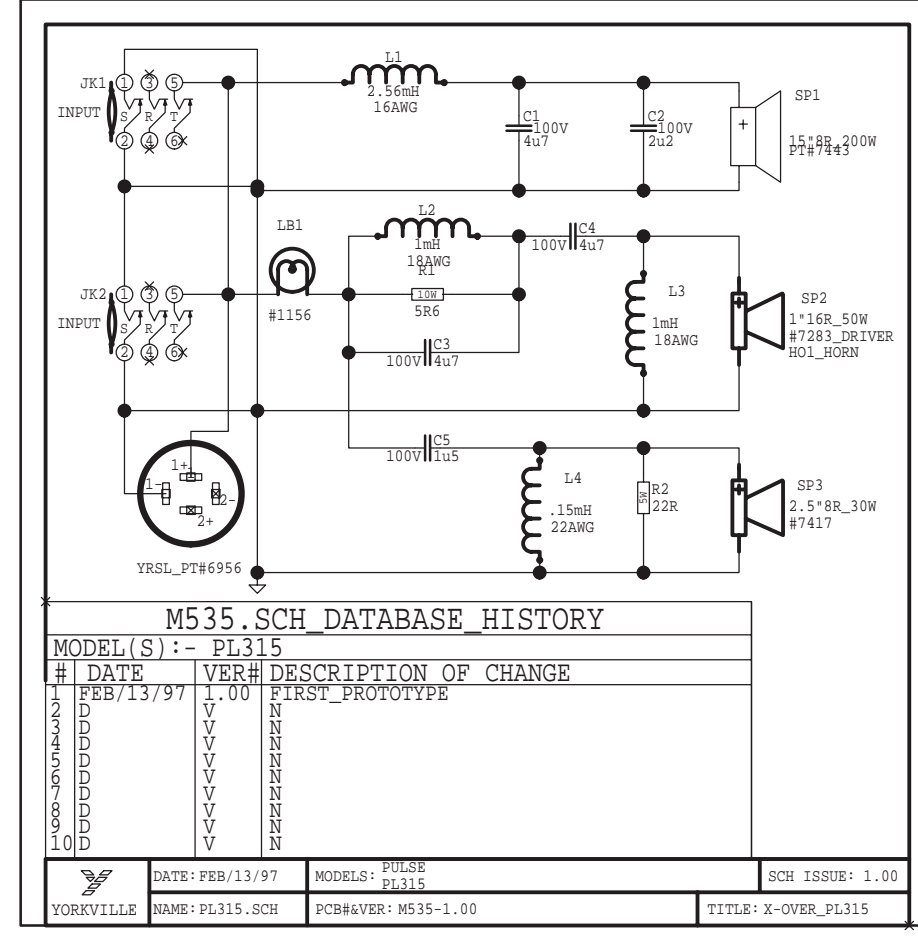
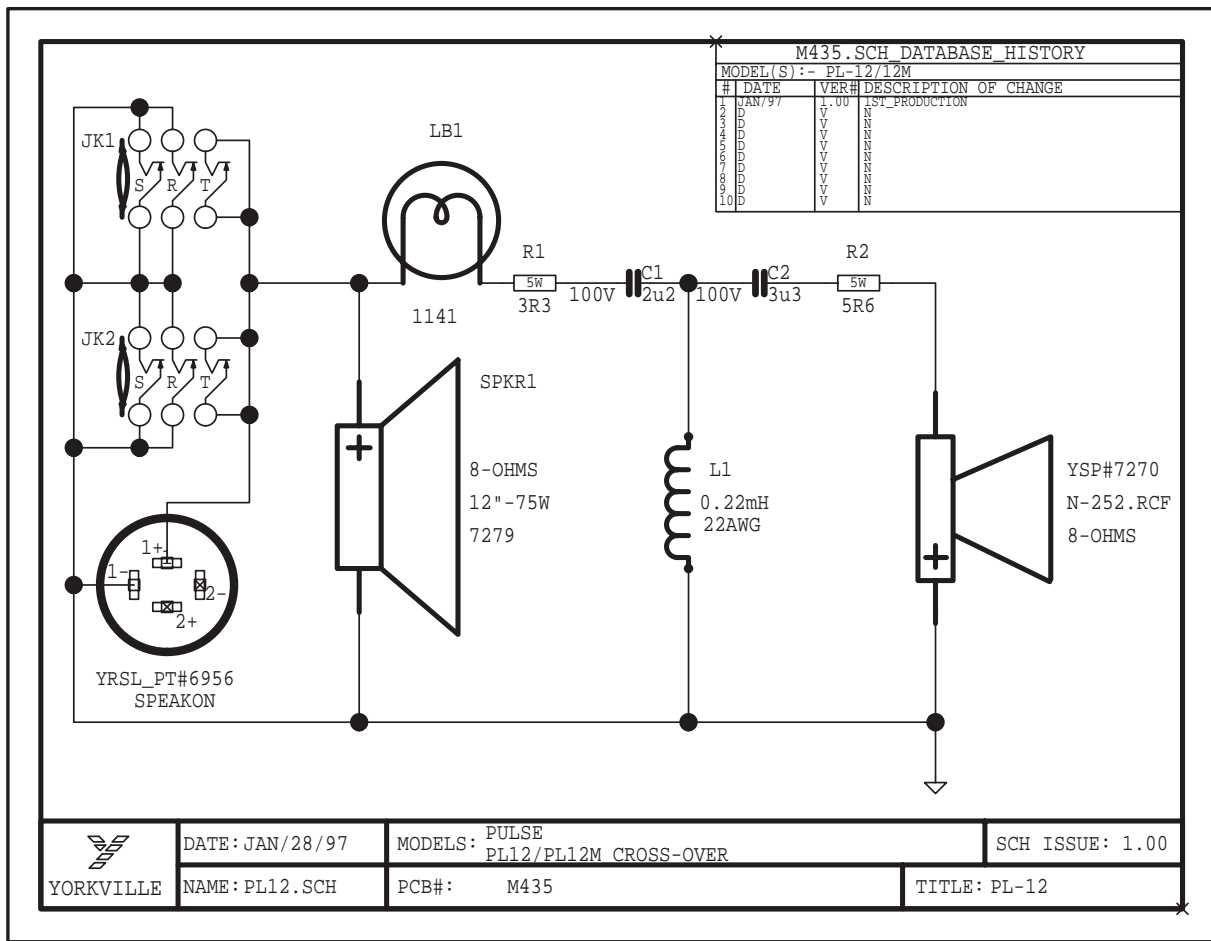
| M435.PCB_DATABASE_HISTORY | | | |
|---|-----------|-------|---------------------------------|
| MODEL(S):- PL10/1070V/PM10/PL12/PM12/C12/C8 | | | |
| # | DATE | VER# | DESCRIPTION OF CHANGE |
| 1 | JAN/97 | 1.00P | FIRST PROTOTYPE |
| 2 | JAN/28/97 | 1.00 | ADD R2 |
| 3 | JUN/12/97 | 2.00 | REDONE FOR C8/C12 |
| 4 | OCT/15/97 | 3.00 | REDONE FOR 3 UP SPREAD FOR TABS |
| 5 | DEC/08/97 | 4.00 | TABS_ADDED_FOR_PL1070V |
| 6 | | | |
| 7 | | | |
| 8 | | | |
| 9 | | | |
| 10 | | | |
| 11 | | | |

| | | |
|-----------|------|--------|
| PL10/PM10 | M435 | 4.00 |
| PL12/PM12 | PCB# | ISSUE# |
| MODEL | | |



TOPSIDE M435-4.00

FUNCTION

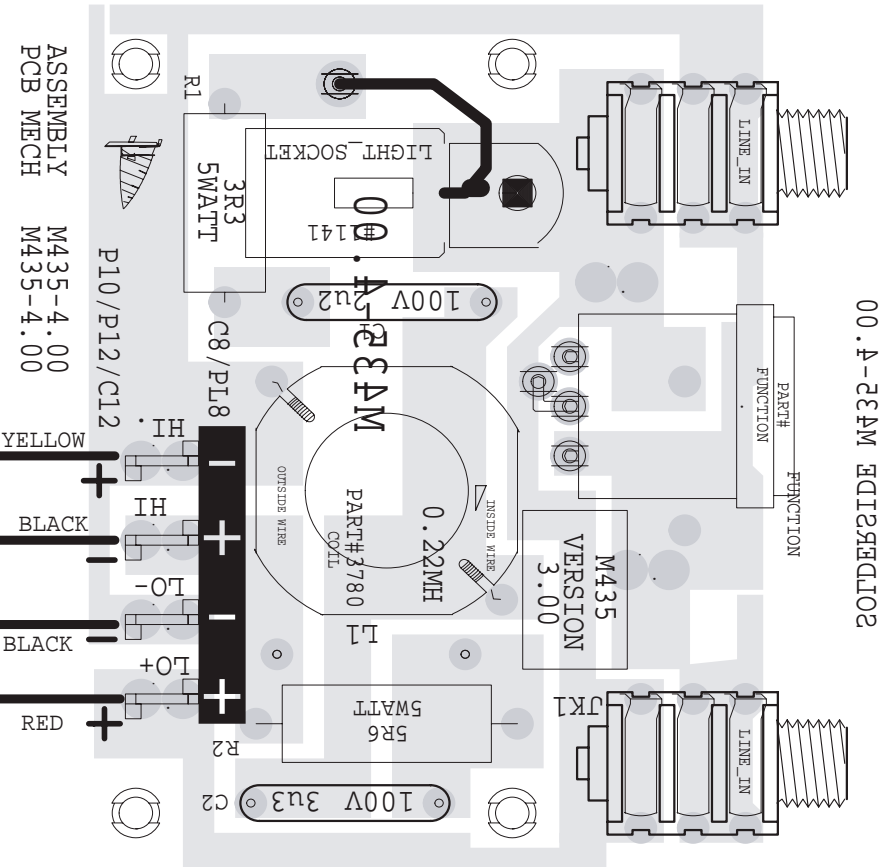


| M435.PCB DATABASE HISTORY | | | |
|---------------------------|-----------|------|---------------------------------|
| # | DATE | VER# | DESCRIPTION OF CHANGE |
| 1 | JAN/97 | 1.00 | FIRST PROTOTYPE |
| 2 | JAN/28/97 | 1.00 | ADD R2 |
| 3 | JUN/12/97 | 2.00 | REDONE FOR C8/C12 |
| 4 | OCT/15/97 | 3.00 | REDONE FOR 3 UP_SPREAD_FOR_TABS |
| 5 | DEC/08/97 | 4.00 | TABS_ADDED_FOR_PL1070V |
| 6 | | | |
| 7 | | | |
| 8 | | | |
| 9 | | | |
| 10 | | | |
| 11 | | | |

PL10/PM10
PL12/PM12
MODEL

M435
PCB#

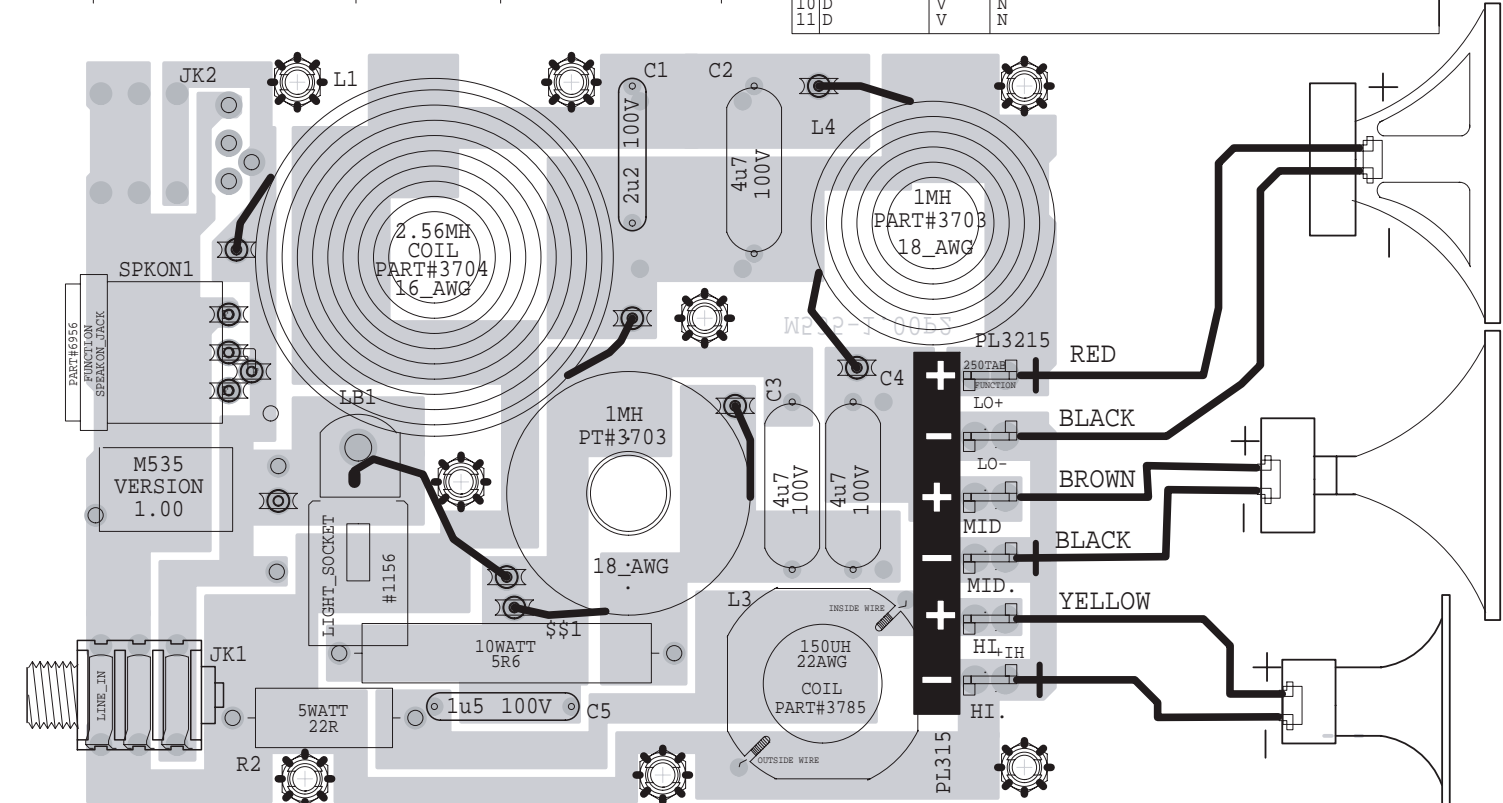
4.00
ISSUE#

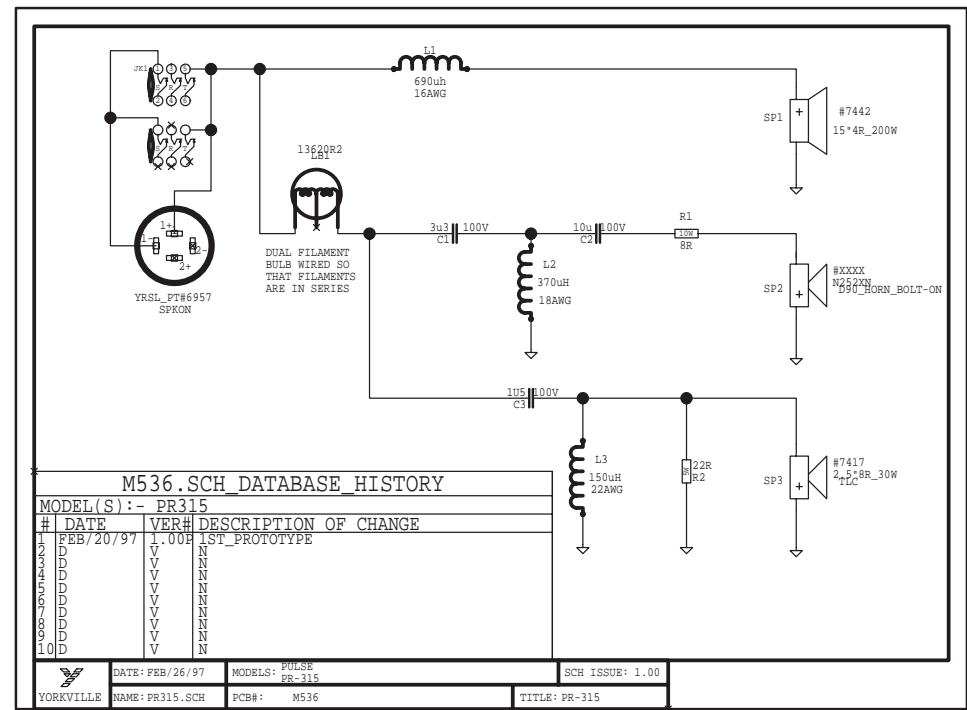
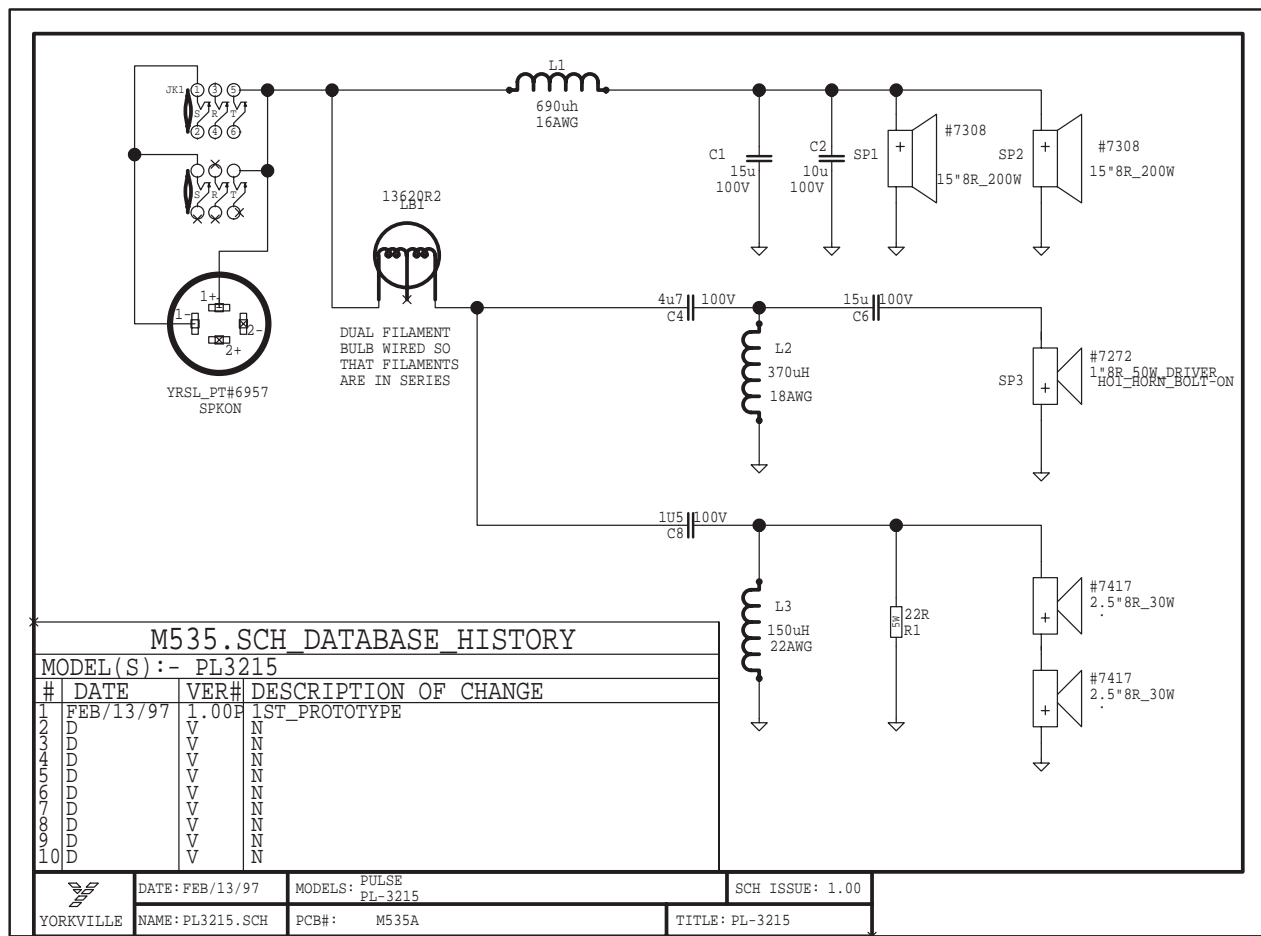


00.A-32AM E12S9E1202

| M535.PCB DATABASE HISTORY | | | |
|---------------------------|--------|------|-----------------------|
| # | DATE | VER# | DESCRIPTION OF CHANGE |
| 1 | FEB/97 | 1.00 | FIRST_PROTOTYPE |
| 2 | | | |
| 3 | | | |
| 4 | | | |
| 5 | | | |
| 6 | | | |
| 7 | | | |
| 8 | | | |
| 9 | | | |
| 10 | | | |
| 11 | | | |

| ISSUE# | PCB# | MODEL |
|--------|------|-------|
| 1.00 | M535 | PL315 |





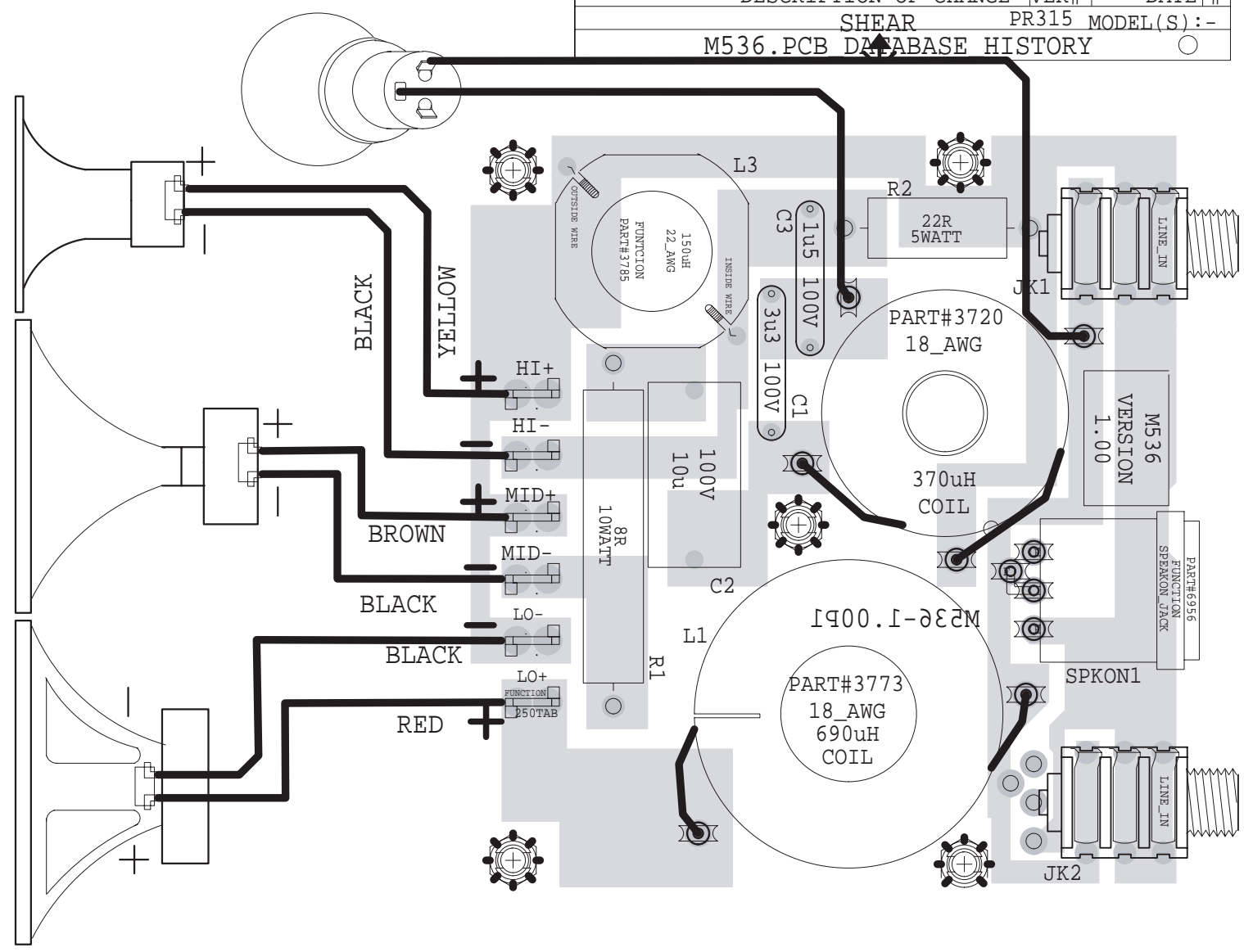
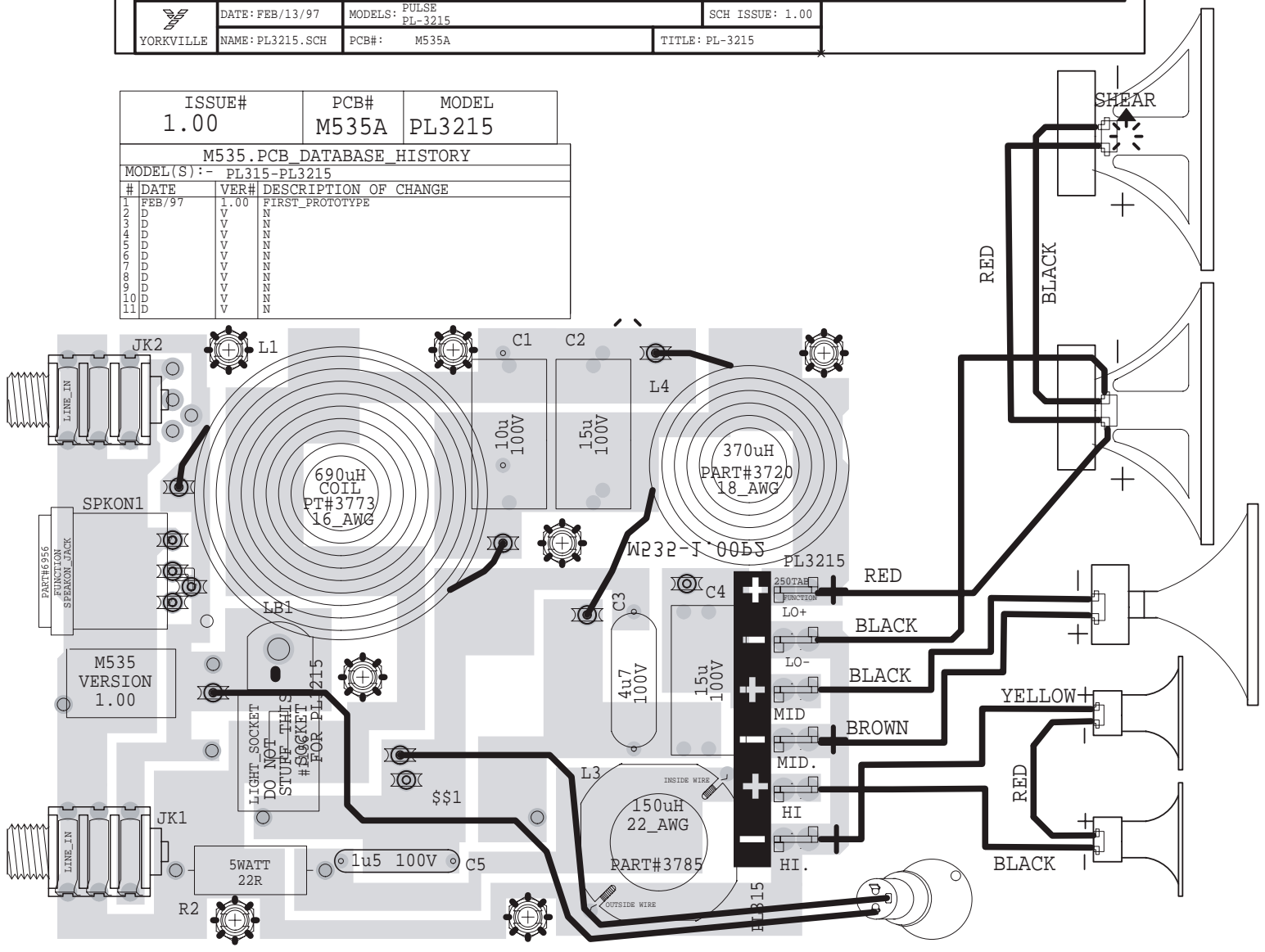
| | | | | | |
|-------|------|--------|-----------------------------------|------|--------|
| PR315 | M536 | 1.00 | FIRST PROTOTYPE | 1.00 | FEB/97 |
| MODEL | PCB# | ISSUE# | DESCRIPTION OF CHANGE VER# DATE # | | |
| | | | SHEAR PR315 MODEL(S) :- | | |

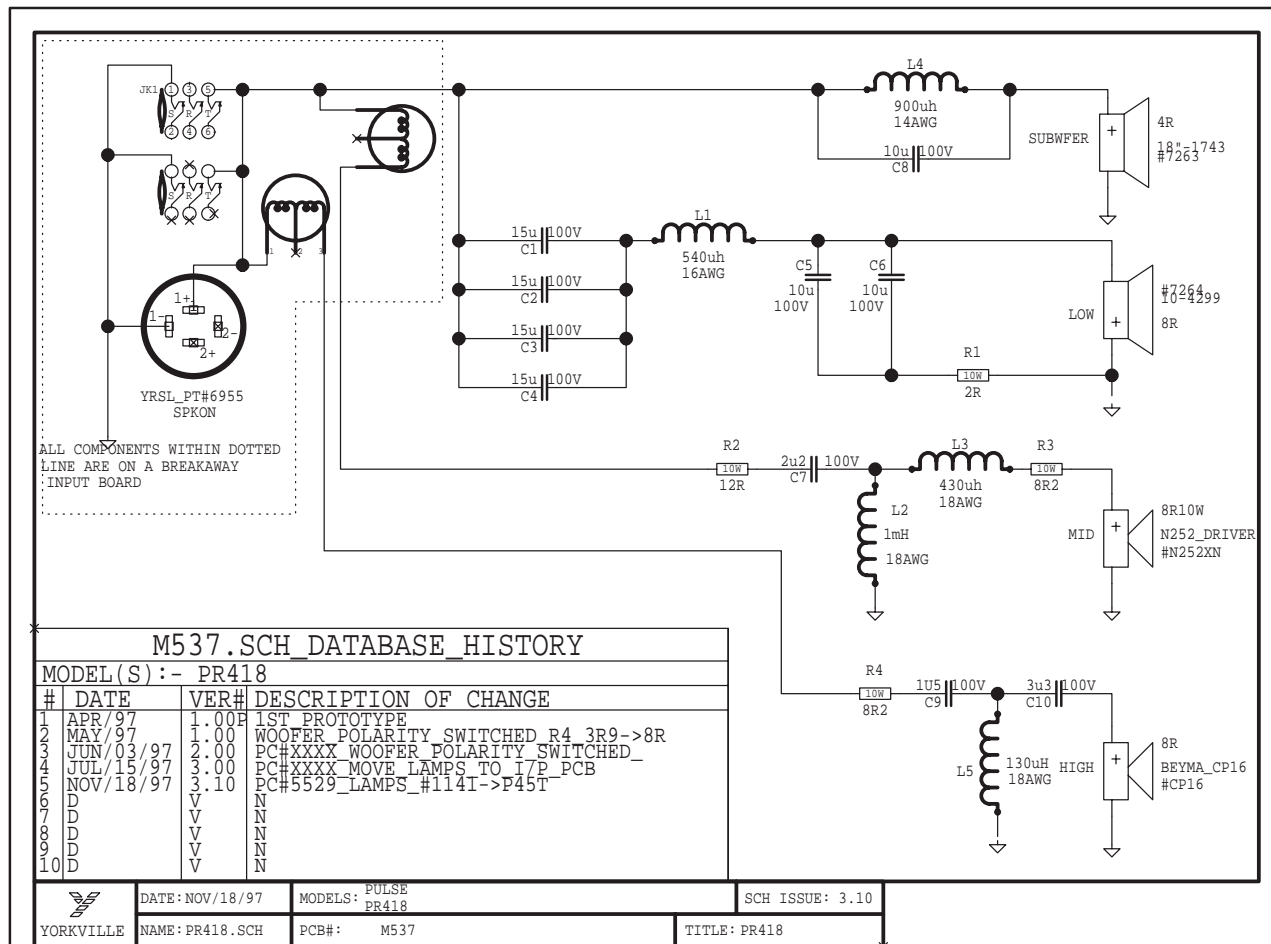
M536.PCB DATABASE HISTORY

| | | |
|--------|-------|--------|
| ISSUE# | PCB# | MODEL |
| 1.00 | M535A | PL3215 |

M535.PCB DATABASE HISTORY

| MODEL(S) :- PL315-PL3215 | | |
|--------------------------|--------|----------------------------|
| # | DATE | VER# DESCRIPTION OF CHANGE |
| 1 | FEB/97 | 1.00 FIRST PROTOTYPE |
| 2 | | |
| 3 | | |
| 4 | | |
| 5 | | |
| 6 | | |
| 7 | | |
| 8 | | |
| 9 | | |
| 10 | | |
| 11 | | |

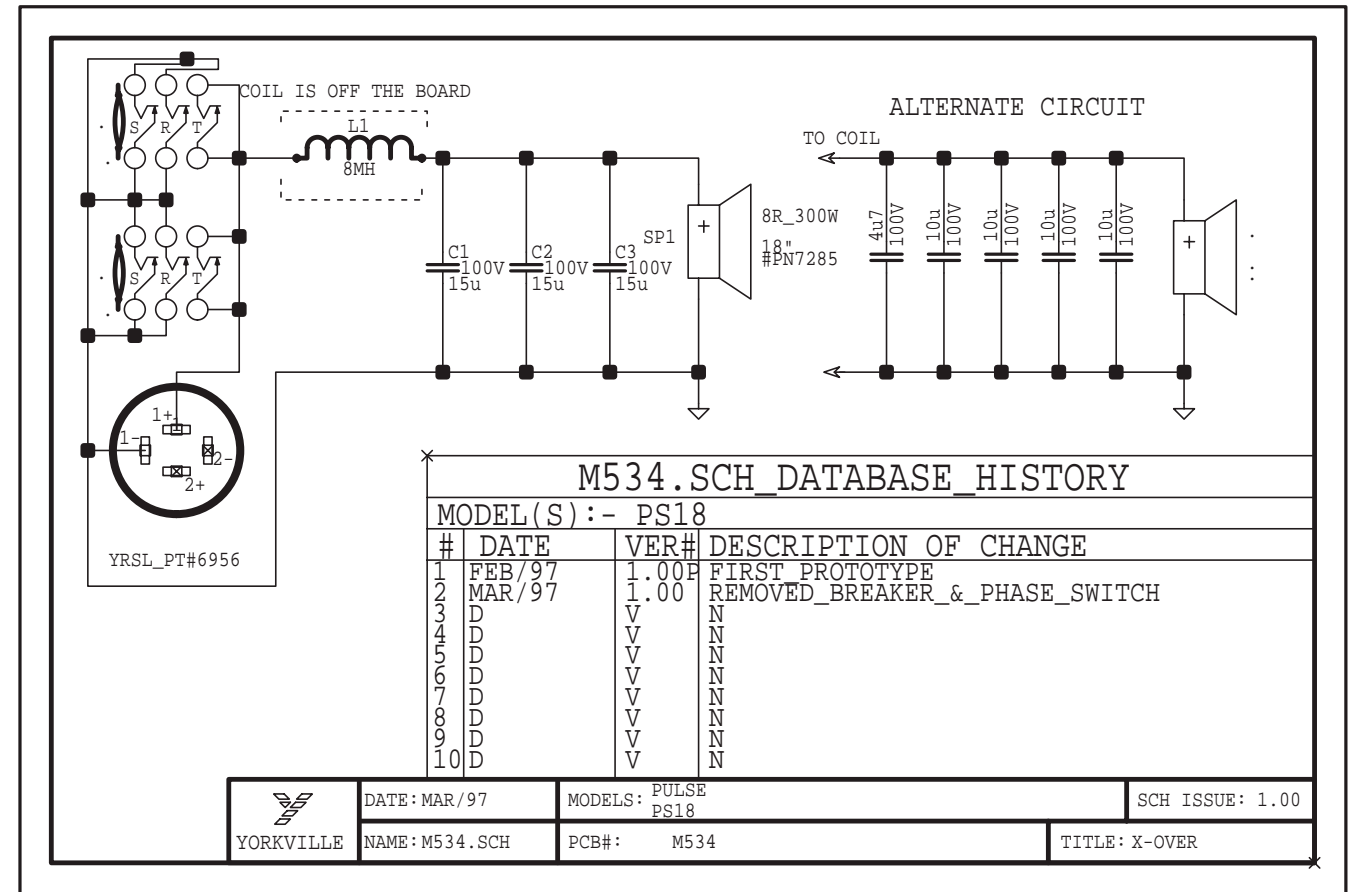




M537.SCH DATABASE HISTORY

| MODEL(S):- PR418 | | | |
|------------------|-----------|-------|-------------------------------------|
| # | DATE | VER# | DESCRIPTION OF CHANGE |
| 1 | APR/97 | 1.00P | FIRST PROTOTYPE |
| 2 | MAY/97 | 2.00 | WOOFER POLARITY SWITCHED R4 3R9->8R |
| 3 | JUN/03/97 | 2.00 | PC#XXXX WOOFER POLARITY SWITCHED |
| 4 | JUL/15/97 | 3.00 | PC#XXXX MOVE LAMPS TO T/P PCB |
| 5 | NOV/18/97 | 3.10 | PC#5529_LAMPS_#1141->P45T |
| 6 | | | |
| 7 | | | |
| 8 | | | |
| 9 | | | |
| 10 | | | |
| 11 | | | |
| 12 | | | |

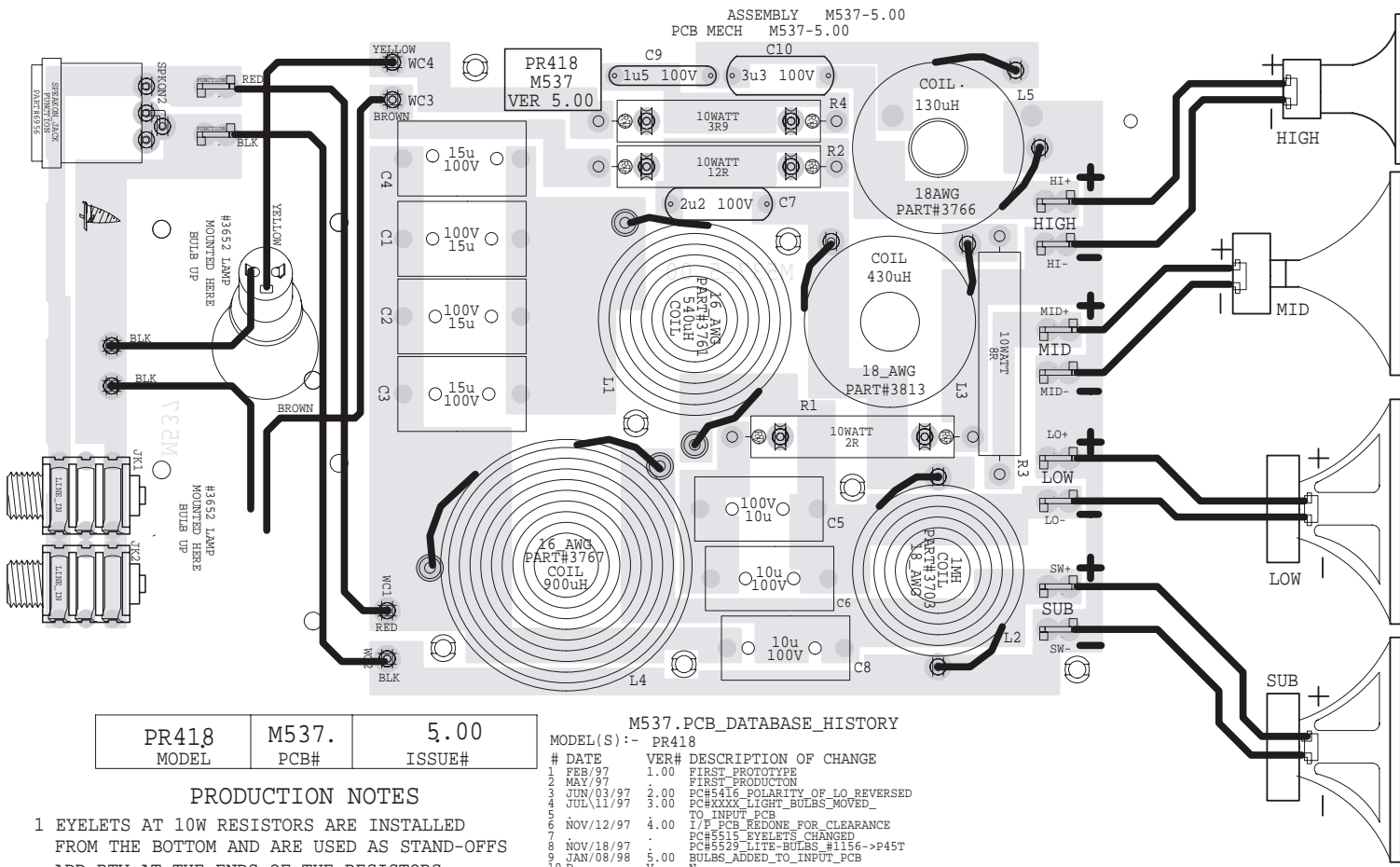
| | | | |
|-----------|-----------------|---------------------|-----------------|
| YORKVILLE | DATE: NOV/18/97 | MODELS: PULSE PR418 | SCH ISSUE: 3.10 |
| YORKVILLE | NAME: PR418.SCH | PCB#: M537 | TITLE: PR418 |



M534.SCH DATABASE HISTORY

| MODEL(S):- PS18 | | | |
|-----------------|--------|-------|--------------------------------|
| # | DATE | VER# | DESCRIPTION OF CHANGE |
| 1 | FEB/97 | 1.00P | FIRST PROTOTYPE |
| 2 | MAR/97 | 1.00 | REMOVED_BREAKER_&_PHASE_SWITCH |
| 3 | | | |
| 4 | | | |
| 5 | | | |
| 6 | | | |
| 7 | | | |
| 8 | | | |
| 9 | | | |
| 10 | | | |
| 11 | | | |
| 12 | | | |

| | | | |
|-----------|----------------|--------------------|-----------------|
| YORKVILLE | DATE: MAR/97 | MODELS: PULSE PS18 | SCH ISSUE: 1.00 |
| YORKVILLE | NAME: M534.SCH | PCB#: M534 | TITLE: X-OVER |

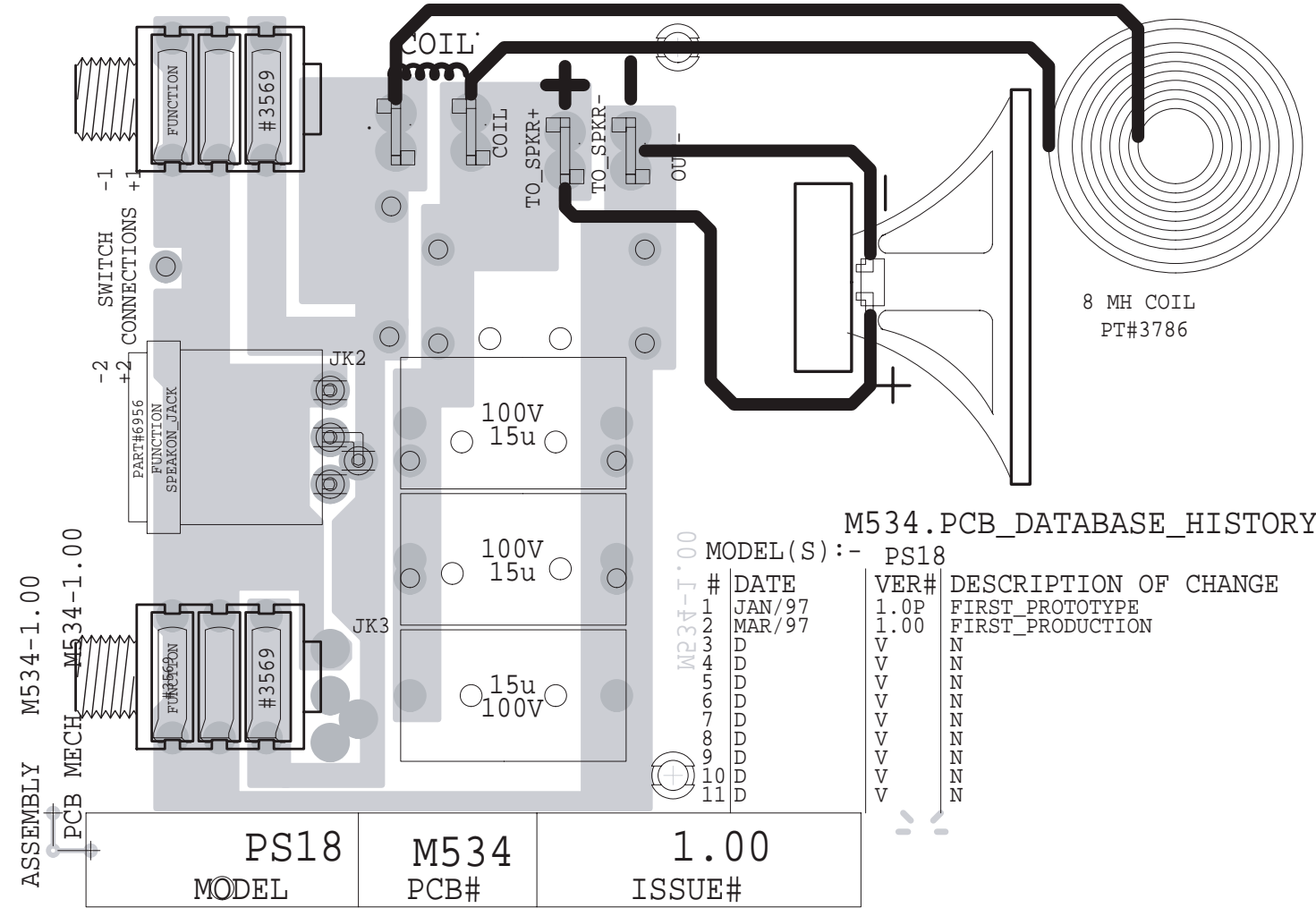


| | | |
|-------|-------|--------|
| PR418 | M537. | 5.00 |
| MODEL | PCB# | ISSUE# |

M537.PCB DATABASE HISTORY

| MODEL(S):- PR418 | | | |
|------------------|-----------|------|--|
| # | DATE | VER# | DESCRIPTION OF CHANGE |
| 1 | FEB/97 | 1.00 | FIRST PROTOTYPE |
| 2 | MAY/97 | 2.00 | FIRST PRODUCTION |
| 3 | JUN/03/97 | 2.00 | PC#5416 POLARITY OF LO REVERSED |
| 4 | JUL/11/97 | 3.00 | PC#XXXX LIGHT BULBS MOVED TO INPUT PCB |
| 5 | NOV/12/97 | 4.00 | T/P PCB REDONE FOR CLEARANCE |
| 6 | NOV/18/97 | 5.00 | PC#5515 EYELETS CHANGED |
| 7 | NOV/18/97 | 5.00 | PC#5529_LITE-BULBS_#1156->P45T |
| 8 | JAN/08/98 | 5.00 | BULBS_ADDED_TO_INPUT_PCB |
| 9 | | | |
| 10 | | | |
| 11 | | | |
| 12 | | | |

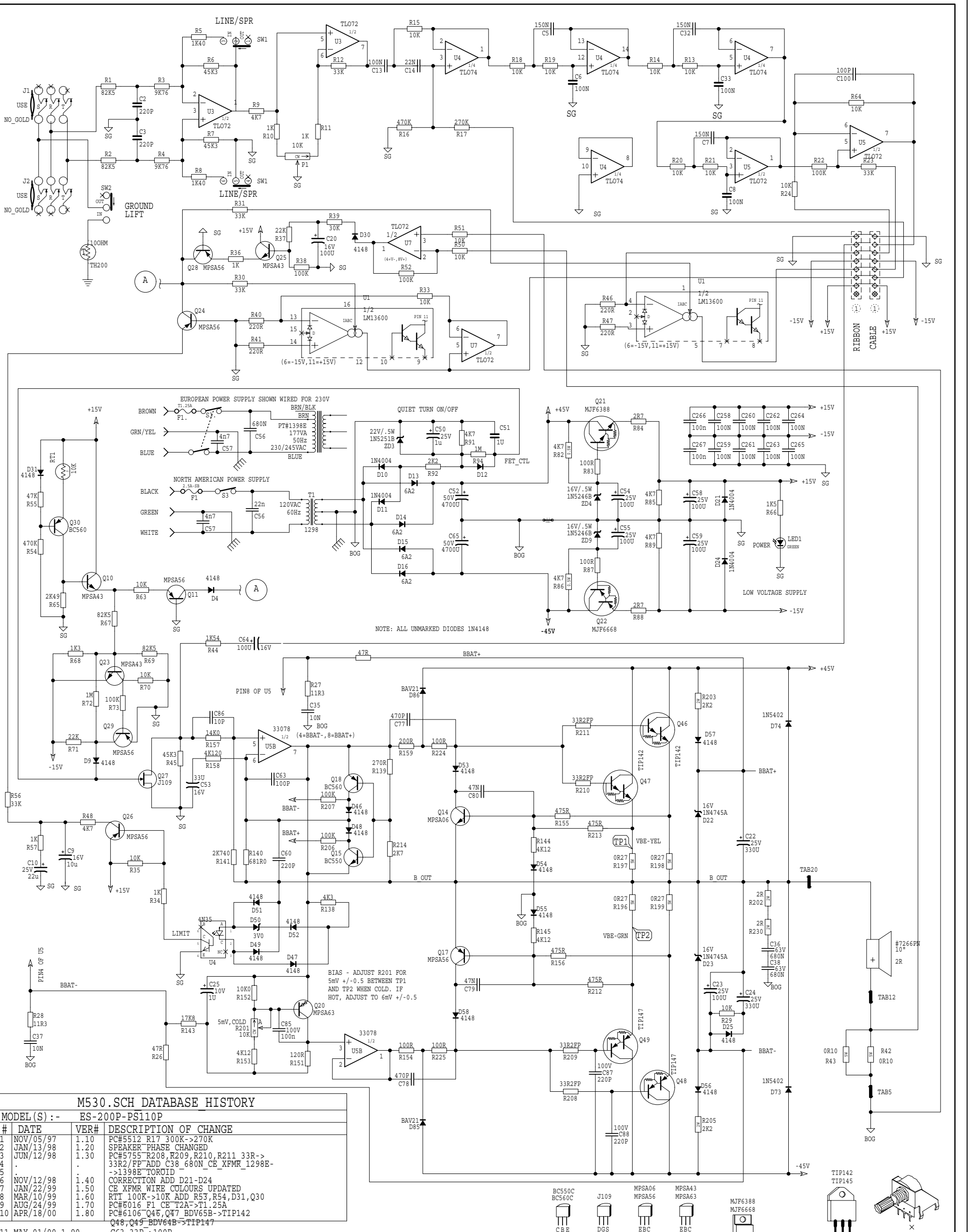
- PRODUCTION NOTES
- EYELETS AT 10W RESISTORS ARE INSTALLED FROM THE BOTTOM AND ARE USED AS STAND-OFFS. ADD RTV AT THE ENDS OF THE RESISTORS.
 - BEND 10W RESISTOR LEADS AS SHOWN
 - C9,C10 BEND OVER AND RTV AFTER SHEARING



| | | |
|-------|------|--------|
| PS18 | M534 | 1.00 |
| MODEL | PCB# | ISSUE# |

M534.PCB DATABASE HISTORY

| MODEL(S):- PS18 | | | |
|-----------------|--------|------|-----------------------|
| # | DATE | VER# | DESCRIPTION OF CHANGE |
| 1 | JAN/97 | 1.0P | FIRST PROTOTYPE |
| 2 | MAR/97 | 1.00 | FIRST PRODUCTION |
| 3 | | | |
| 4 | | | |
| 5 | | | |
| 6 | | | |
| 7 | | | |
| 8 | | | |
| 9 | | | |
| 10 | | | |
| 11 | | | |

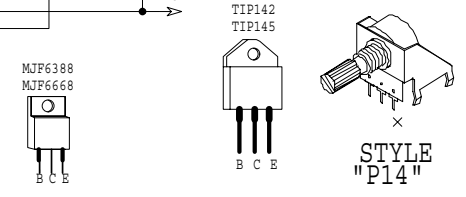


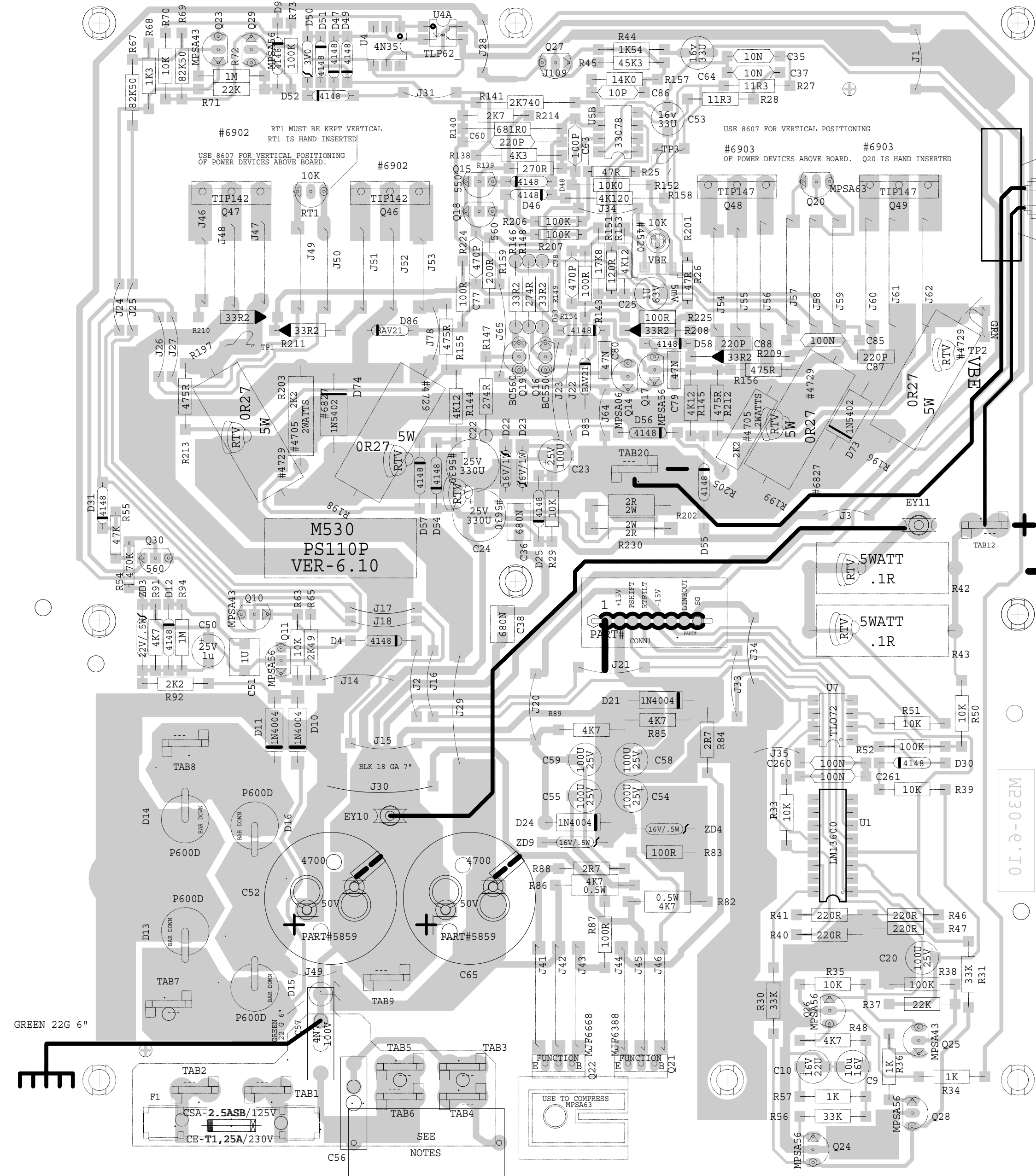
M530.SCH DATABASE HISTORY

| MODEL(S) :- ES-200P-PS110P | | | |
|----------------------------|-----------|------|--|
| # | DATE | VER# | DESCRIPTION OF CHANGE |
| 1 | NOV/05/97 | 1.10 | PC#5512 R17 300K->270K |
| 2 | JAN/13/98 | 1.20 | SPEAKER PHASE CHANGED |
| 3 | JUN/12/98 | 1.30 | PC#5755 R208, R209, R210, R211 33R->33R2/FP ADD C38 680N CE XFMR 1298E->1398E TOROID |
| 4 | . | . | . |
| 5 | NOV/12/98 | 1.40 | CORRECTION ADD D21-D24 |
| 6 | JAN/22/99 | 1.50 | CE XFMR WIRE COLOURS UPDATED |
| 7 | MAR/10/99 | 1.60 | RTI 100K->10K ADD R53, R54, D31, Q30 |
| 8 | AUG/24/99 | 1.70 | PC#6016 F1 CE T2A->T1.25A |
| 9 | APR/18/00 | 1.80 | PC#6106 Q46, Q47 BDV65B->TIP142 Q48, Q49 BDV64B->TIP147 |
| 11 | MAY 01/00 | 1.90 | C63 33P->100P |
| 12 | SEP 08/00 | 2.00 | PC#6274 REMOVE Q16, 19 R146, 147, 148, 149, |

U:\ES200P20.PRN

| | | | |
|-----------|-------------------|---------------------------|-----------------|
| YORKVILLE | DATE: SEP/08/2000 | MODELS: ES-200P PS110P | SCH ISSUE: 2.00 |
| | NAME: M530-.SCH | TITLE: POWERED_SUB_WOOFER | |



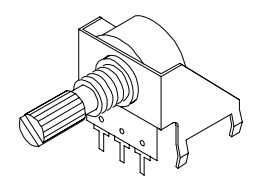


M530.PCB DATABASE HISTORY

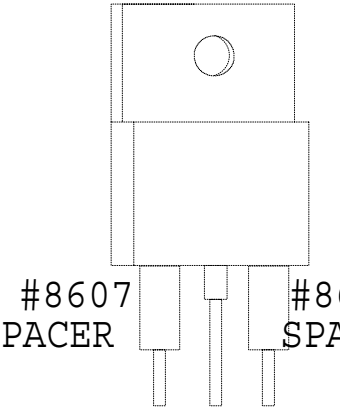
MODEL(S) :- PS-110P

| # | DATE | VER# | DESCRIPTION OF CHANGE |
|----|-----------|------|--|
| 1 | FEB/97 | 1.00 | FIRST PROTOTYPE |
| 2 | MAY/97 | 2.00 | TRACKS_AT_I/P JACKS_REDONE_C50,C51 MOVED |
| 3 | | | |
| 4 | NOV/05/97 | 2.01 | R17 300K->270K |
| 5 | JAN/13/98 | 2.10 | SPKR PHASE CHANGED |
| 6 | JUN/11/98 | 2.20 | PC#5755 C36 330N->680N R208,R209, R210,R211 33R->33R2 FLM-PRF |
| 7 | | | |
| 8 | JUN/12/98 | 3.00 | ADD C38 680N PC#5755 PART_2 |
| 9 | JAN/25/99 | 4.00 | PC5908 ADD TLP621 (U4A) |
| 10 | MAR/11/99 | | PC#5980 RT1_100K->10K ADD D31_R54, R55,Q30 |
| 11 | | | |
| 12 | SEP/17/99 | | C9 NON-POLARIZED->POLARIZED |
| 13 | APR/18/00 | 4.10 | PC#6106 Q46,Q47 BDV65B->TIP142 |
| 14 | | | Q48,Q49 BDV64B->TIP147 |
| 15 | MAY/01/00 | 4.20 | C63 33P->100P |
| 16 | MAY/26/00 | 5.00 | REMOVE UNUSED TRACE CAUSING SHORTS |
| 17 | | | PC#5783 PC#5810 MOVE C32,C34 APART |
| 18 | JUN/19/00 | 6.00 | PC# ALIGN POT WITH JACKS |
| 19 | SEP/08/00 | 6.10 | PC#6274 REMOVE Q19,Q16,R146,R147, R148,R149 CIRCUIT NOT NEEDED |
| 20 | | | |

PRODUCTION NOTES



STYLE "P14"

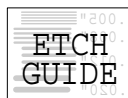


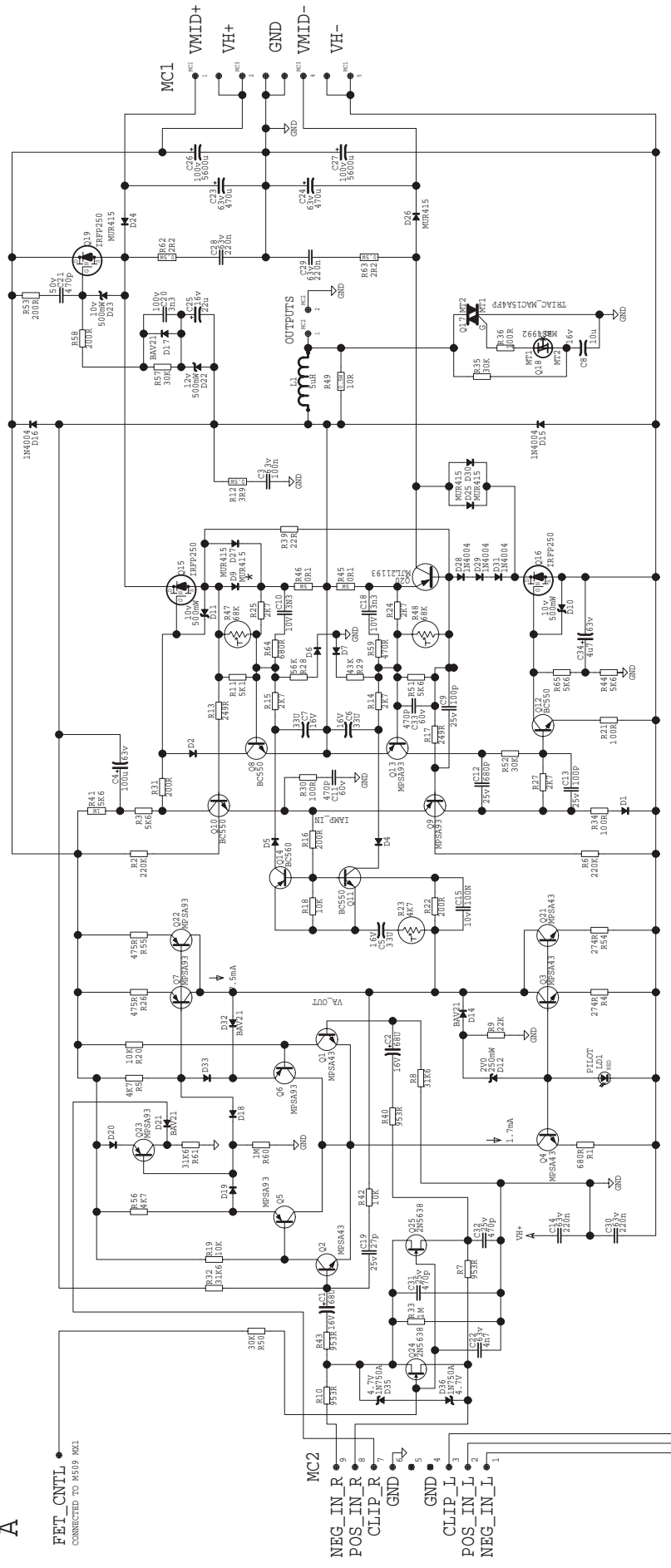
#8607 SPACER #8607 SPACER

Q46, Q47, Q48, Q49

- 1 NO FUSE AND HOLDERS FOR "CE"
- 2 C56 = 680N FOR 230VAC OPERATION
- 3 C56 = 22N FOR 120VAC OPERATION
- 4 Q20/RT1 = TO BE HAND INSERTED
- 5 STUFF U4 (4N35)OR U4A (TLP621 NOT BOTH (NOTE U4A IS HAND INSERTED
- 6 USE THIS LAYOUT IF RT1 IS 10K

BLANK SIZE=12.250 X 9.925

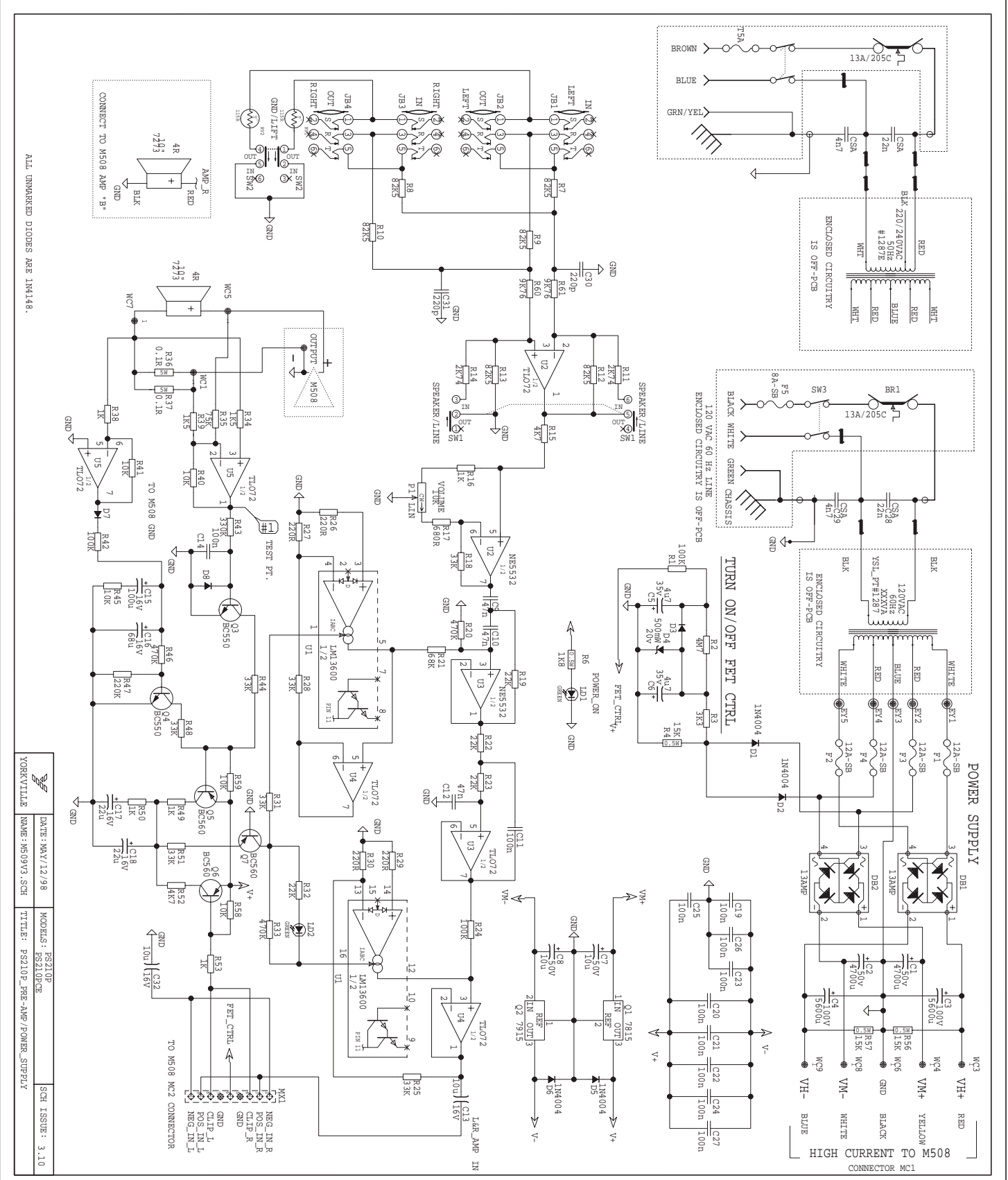




SERVICE WARNING: POTENTIALS GREATER THAN 130VDC PRESENT.
USE EXTREME CAUTION.

- CONNECTIONS TO THE LEFT CHANNEL AMPLIFIER
- CLIP_L_1
 - POS_IN_L_1
 - NEG_IN_L_1
 - GND
 - CLIP_L_2
 - POS_IN_L_2
 - NEG_IN_L_2
 - GND
 - CLIP_L_3
 - POS_IN_L_3
 - NEG_IN_L_3
 - GND
 - CLIP_L_4
 - POS_IN_L_4
 - NEG_IN_L_4
 - GND
 - CLIP_L_5
 - POS_IN_L_5
 - NEG_IN_L_5
 - GND
 - CLIP_L_6
 - POS_IN_L_6
 - NEG_IN_L_6
 - GND
 - CLIP_L_7
 - POS_IN_L_7
 - NEG_IN_L_7
 - GND
 - CLIP_L_8
 - POS_IN_L_8
 - NEG_IN_L_8
 - GND
 - CLIP_L_9
 - POS_IN_L_9
 - NEG_IN_L_9
 - GND
 - CLIP_L_10
 - POS_IN_L_10
 - NEG_IN_L_10
 - GND
 - CLIP_L_11
 - POS_IN_L_11
 - NEG_IN_L_11
 - GND
 - CLIP_L_12
 - POS_IN_L_12
 - NEG_IN_L_12
 - GND
 - CLIP_L_13
 - POS_IN_L_13
 - NEG_IN_L_13
 - GND
 - CLIP_L_14
 - POS_IN_L_14
 - NEG_IN_L_14
 - GND
 - CLIP_L_15
 - POS_IN_L_15
 - NEG_IN_L_15
 - GND
 - CLIP_L_16
 - POS_IN_L_16
 - NEG_IN_L_16
 - GND
 - CLIP_L_17
 - POS_IN_L_17
 - NEG_IN_L_17
 - GND
 - CLIP_L_18
 - POS_IN_L_18
 - NEG_IN_L_18
 - GND
 - CLIP_L_19
 - POS_IN_L_19
 - NEG_IN_L_19
 - GND
 - CLIP_L_20
 - POS_IN_L_20
 - NEG_IN_L_20
 - GND
 - CLIP_L_21
 - POS_IN_L_21
 - NEG_IN_L_21
 - GND
 - CLIP_L_22
 - POS_IN_L_22
 - NEG_IN_L_22
 - GND
 - CLIP_L_23
 - POS_IN_L_23
 - NEG_IN_L_23
 - GND
 - CLIP_L_24
 - POS_IN_L_24
 - NEG_IN_L_24
 - GND
 - CLIP_L_25
 - POS_IN_L_25
 - NEG_IN_L_25
 - GND
 - CLIP_L_26
 - POS_IN_L_26
 - NEG_IN_L_26
 - GND
 - CLIP_L_27
 - POS_IN_L_27
 - NEG_IN_L_27
 - GND
 - CLIP_L_28
 - POS_IN_L_28
 - NEG_IN_L_28
 - GND
 - CLIP_L_29
 - POS_IN_L_29
 - NEG_IN_L_29
 - GND
 - CLIP_L_30
 - POS_IN_L_30
 - NEG_IN_L_30
 - GND
 - CLIP_L_31
 - POS_IN_L_31
 - NEG_IN_L_31
 - GND
 - CLIP_L_32
 - POS_IN_L_32
 - NEG_IN_L_32
 - GND
 - CLIP_L_33
 - POS_IN_L_33
 - NEG_IN_L_33
 - GND
 - CLIP_L_34
 - POS_IN_L_34
 - NEG_IN_L_34
 - GND
 - CLIP_L_35
 - POS_IN_L_35
 - NEG_IN_L_35
 - GND
 - CLIP_L_36
 - POS_IN_L_36
 - NEG_IN_L_36
 - GND
 - CLIP_L_37
 - POS_IN_L_37
 - NEG_IN_L_37
 - GND
 - CLIP_L_38
 - POS_IN_L_38
 - NEG_IN_L_38
 - GND
 - CLIP_L_39
 - POS_IN_L_39
 - NEG_IN_L_39
 - GND
 - CLIP_L_40
 - POS_IN_L_40
 - NEG_IN_L_40
 - GND
 - CLIP_L_41
 - POS_IN_L_41
 - NEG_IN_L_41
 - GND
 - CLIP_L_42
 - POS_IN_L_42
 - NEG_IN_L_42
 - GND
 - CLIP_L_43
 - POS_IN_L_43
 - NEG_IN_L_43
 - GND
 - CLIP_L_44
 - POS_IN_L_44
 - NEG_IN_L_44
 - GND
 - CLIP_L_45
 - POS_IN_L_45
 - NEG_IN_L_45
 - GND
 - CLIP_L_46
 - POS_IN_L_46
 - NEG_IN_L_46
 - GND
 - CLIP_L_47
 - POS_IN_L_47
 - NEG_IN_L_47
 - GND
 - CLIP_L_48
 - POS_IN_L_48
 - NEG_IN_L_48
 - GND
 - CLIP_L_49
 - POS_IN_L_49
 - NEG_IN_L_49
 - GND
 - CLIP_L_50
 - POS_IN_L_50
 - NEG_IN_L_50
 - GND

DATE: MAR/30/98
MODEL: PS210P
NAME: PS210P
TITLE: PS210P
REV: 1.0

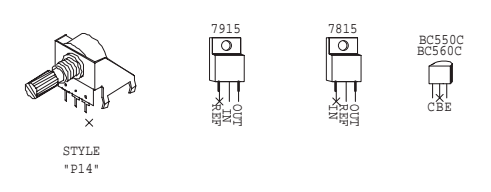


DATE: MAY/12/98
MODEL: PS210P
NAME: PS210P
TITLE: PS210P
REV: 1.0

M509_SCH_DATABASE_HISTORY

| # | DATE | VER# | DESCRIPTION OF CHANGE |
|---|-----------|------|--|
| 1 | SEP/22/95 | | |
| 2 | MAR/03/96 | | |
| 3 | MAR/26/97 | | |
| 4 | MAY/12/98 | 3.10 | PC#4881 UPDATE POWER SUPPLY PC#5079 R16 2K7 TO 1K PC#5340 U3 TL072 --> NE5532 REDONE FOR PS210P |

PRODUCTION NOTES



ALL UNMARKED DIODES ARE 1N4148.

00.2-80M SOLDRSIDE M208-2.00

ASSEMBLY M508-5.00
PCB MECH M508-5.00

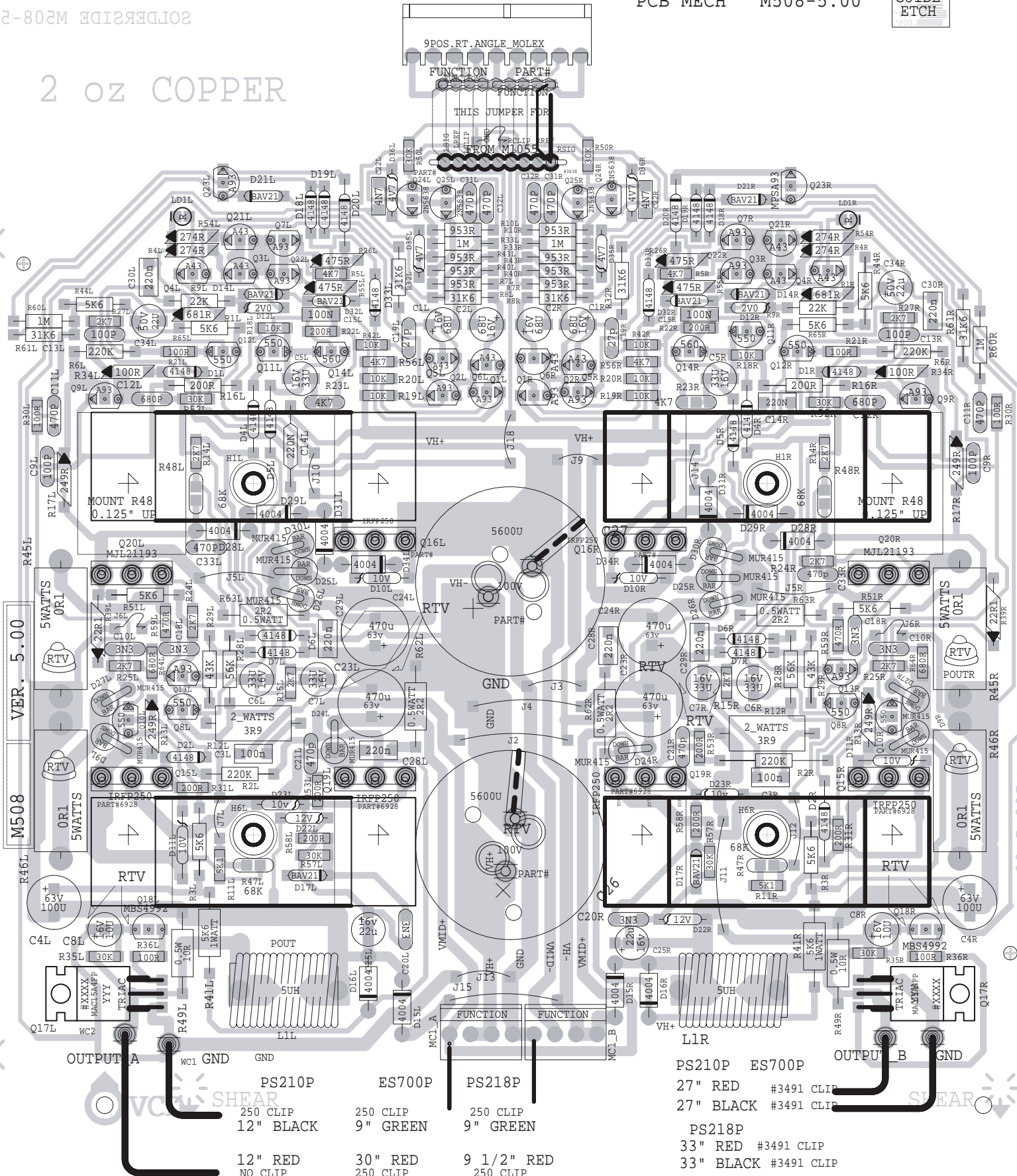
GUIDE ETCH

2 oz COPPER

M508A /ES700P/PS218/PS210P PRODUCTION NOTES

SHEAR

"28.8X" 28.71=EN12 MAIN
BLANK SIZE=17.35"X8.625"



SHEAR

1. ADD RTV TO THE FOLLOWING COMPONENTS
C34L/R, C5L/R, C1L/R, C2L/R, L1L/R
R45L/R, R46L/R, C6L/R, C8L/R, C25L/R
ADD RTV BETWEEN C23L/R , C24L/R AND
C7L/R,C26L/R.
2. LD1L/R ARE BENT OVER FLAT TO PCB AND
RTV'D IN PLACE
3. C26 AND C27 ARE BROKEN AWAY AFTER WAVE
SOLDER AND SOLDERED MANUALLY TO THEIR
CORRECT POSITION. THESE CAPS ARE RTV'D
AND HELD IN POSITION WITH NYLON CABLE
TIES.
4. ADD RTV UNDER THE MOLEX RIBBON CABLE
BEFORE IT IS PUT INTO THE STRAIN RELIEF.
5. ADD TOOTH PICKS TO EYELETS BEFORE WAVE
SOLDER.
6. USE #8799 SCREW TO MOUNT Q17L/R.
7. BEND THERMISTORS R23L/R OVER FLAT TO PCB.

| M508/A/C.PCB_DATABASE_HISTORY | | | |
|---------------------------------|-----------|------|------------------------------------|
| MODEL(S):- ES700P PS218 PS210PX | | | |
| # | DATE | VER# | DESCRIPTION OF CHANGE |
| 1 | FEB/24/95 | 3.40 | SOME TRACES ALTERED.PADS FOR MOLEX |
| 2 | . | . | CHANGED FROM S100 TO R120. |
| 3 | . | . | ROUTING BY FILTER CAPS CHANGED. |
| 4 | AUG/27/97 | 4.00 | PC#XXXX_FILTER CAPS CHANGED |
| 5 | . | . | PC#4409_Q11R MOVED |
| 6 | SEP/05/97 | . | PC#XXXX_Q1L/R_Q2L/R_MOVED |
| 7 | MAR/25/98 | 5.00 | J10_RADIAL->AXIAL |
| 8 | D | V | N |
| 9 | D | V | N |
| 10 | D | V | N |
| 11 | D | V | N |
| 12 | D | V | N |
| 13 | D | V | N |
| 14 | D | V | N |
| 15 | D | V | N |
| 16 | D | V | N |
| 17 | D | V | N |
| 18 | D | V | N |
| 19 | D | V | N |
| 20 | D | V | N |

GUIDE ETCH

SHEAR

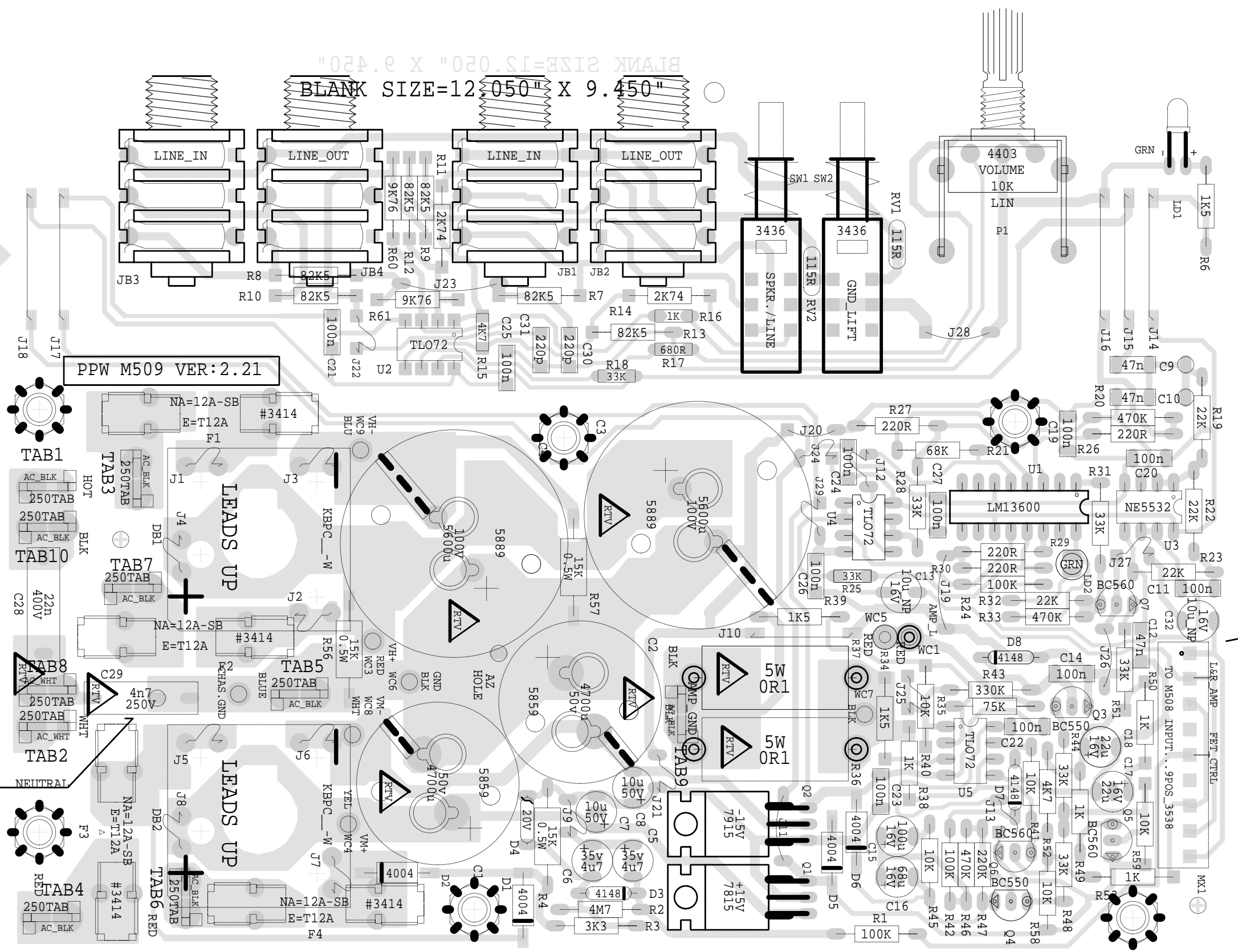
PS210P ES700P PS218P PS210P ES700P

27" RED #3491 CLIP 27" BLACK #3491 CLIP

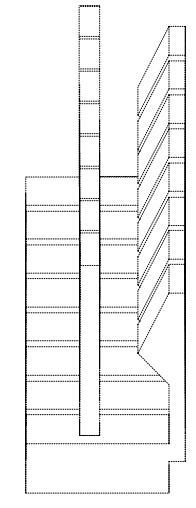
PS218P

33" RED #3491 CLIP 33" BLACK #3491 CLIP

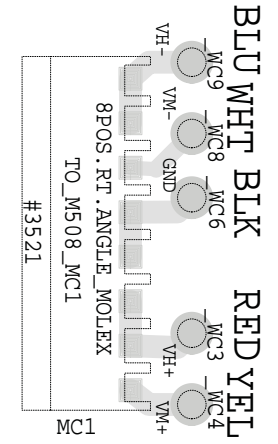
12" RED NO CLIP 30" RED 250 CLIP 9 1/2" RED 250 CLIP



REMOVE C29 (4N7) FOR EUROPEAN



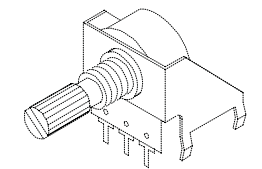
9_PIN MOLEX



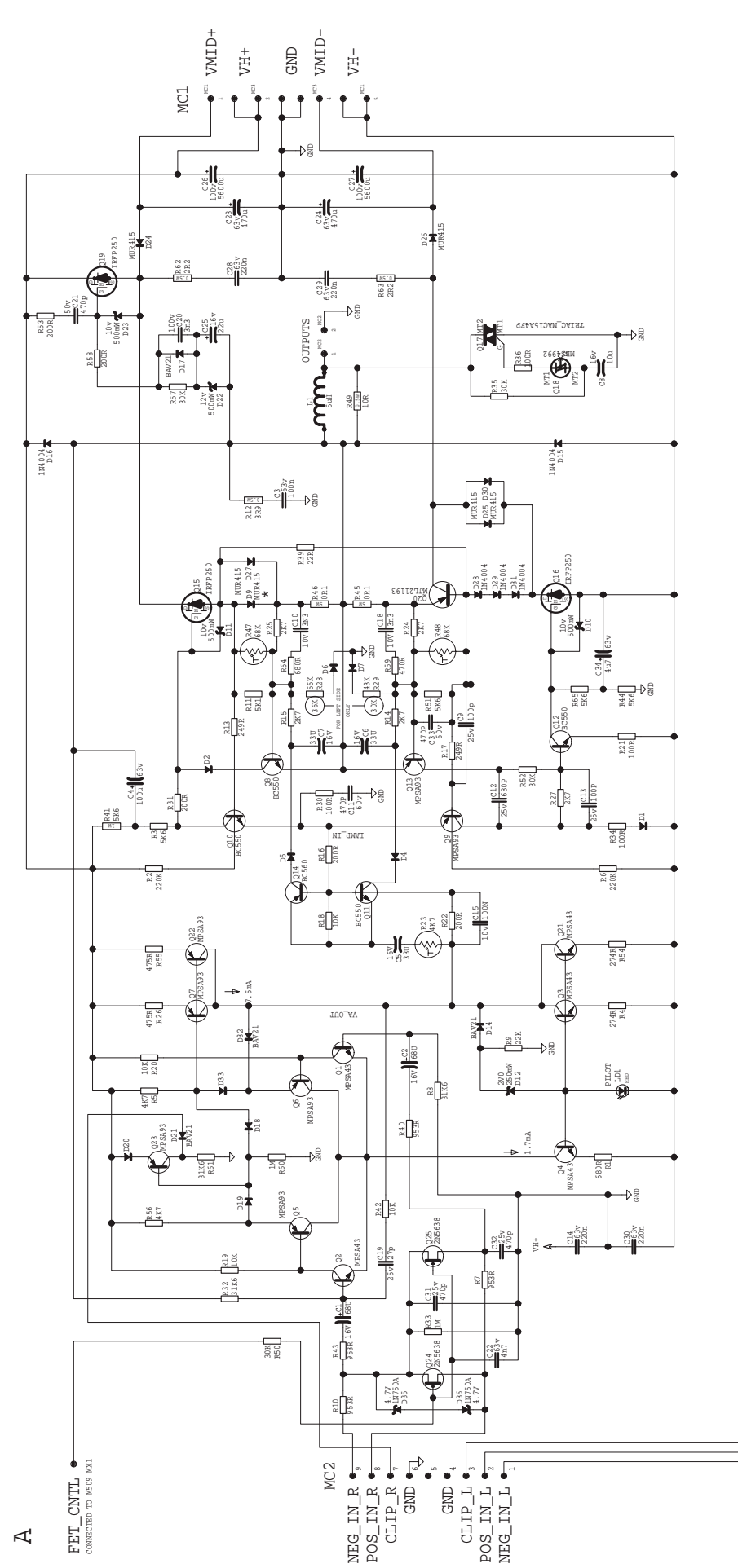
8 POS. RT. ANGLE MOLEX TO_M508_MC1 #3521

M509.PCB_DATABASE_HISTORY

| # | DATE | VER# | DESCRIPTION OF CHANGE |
|---|-----------|------|----------------------------------|
| 1 | JUN/26/95 | 2.20 | PC#4832_REPLACE_EYELETS_FOR_XFMR |
| 2 | | | SECONDARY WIRES WITH TABS |
| 3 | APR/03/96 | 2.21 | PC#5079_R16_2K7-->1K |
| 4 | MAR/26/97 | 2.22 | PC#5340_U3_TL072-->NE5532 |
| 5 | D | N | |
| 6 | D | V | |



STYLE "P14"

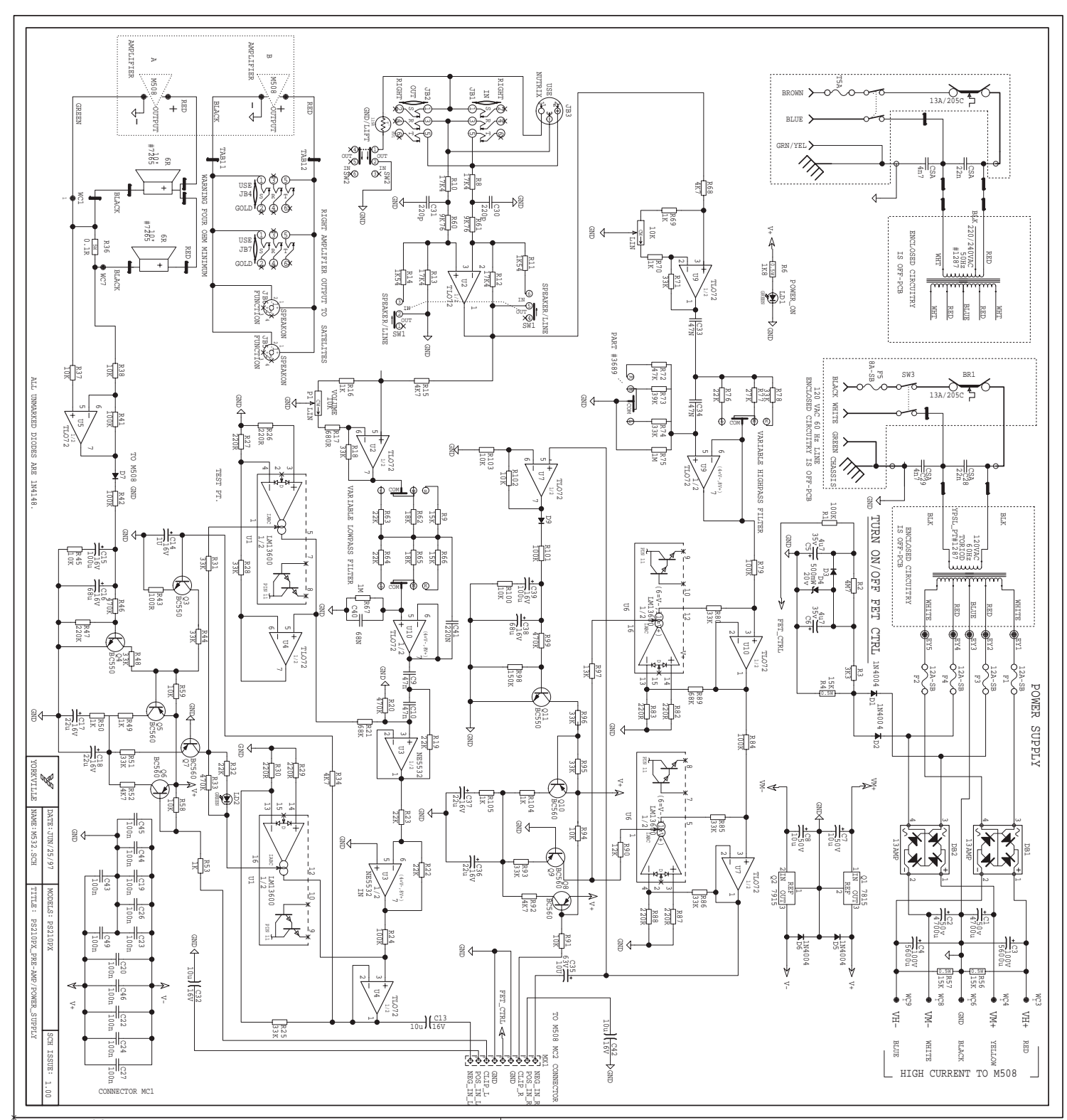


USE EXTREME CAUTION.
 SERVICE WARNING: POTENTIALS GREATER THAN 130VDC PRESENT.

- CONNECTIONS TO THE LEFT CHANNEL AMPLIFIER
- CLIP_L
 - POS_IN_L
 - NEG_IN_L
- CONNECTIONS TO THE RIGHT CHANNEL AMPLIFIER
- MC1
 - VH+
 - GND
 - VMID-
 - VH-
- CONNECTOR PINOUTS:
- IRFP250: GDS, BCE
 - MJL21193: M, G, B, C, E
 - MPSA43: M, G, B, C, E
 - MPSA443: M, G, B, C, E
 - MPSA93: C, B, E
 - MPSA93: D, S, G
 - MPSA43: M, B, S
 - MPSA443: M, B, S

| | |
|------------------------|---------|
| MODEL(S): | PS210PX |
| DATE: | 7/81 |
| VER#: | 1 |
| DESCRIPTION OF CHANGE: | |

YORKVILLE
 MODEL: 24197
 NAME: MUSIC_SCH
 COMPANIES: M532, 3, 45
 TITLE: PWR_AMP
 SHEET: 1 OF 1



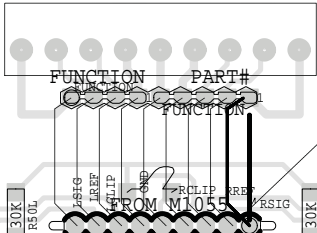
M532.SCH_DATABASE_HISTORY

| # | DATE | VER# | DESCRIPTION OF CHANGE |
|-----|------|------|-----------------------|
| 1 | | 1 | |
| 2 | | 2 | |
| 3 | | 3 | |
| 4 | | 4 | |
| 5 | | 5 | |
| 6 | | 6 | |
| 7 | | 7 | |
| 8 | | 8 | |
| 9 | | 9 | |
| 10 | | 10 | |
| 11 | | 11 | |
| 12 | | 12 | |
| 13 | | 13 | |
| 14 | | 14 | |
| 15 | | 15 | |
| 16 | | 16 | |
| 17 | | 17 | |
| 18 | | 18 | |
| 19 | | 19 | |
| 20 | | 20 | |
| 21 | | 21 | |
| 22 | | 22 | |
| 23 | | 23 | |
| 24 | | 24 | |
| 25 | | 25 | |
| 26 | | 26 | |
| 27 | | 27 | |
| 28 | | 28 | |
| 29 | | 29 | |
| 30 | | 30 | |
| 31 | | 31 | |
| 32 | | 32 | |
| 33 | | 33 | |
| 34 | | 34 | |
| 35 | | 35 | |
| 36 | | 36 | |
| 37 | | 37 | |
| 38 | | 38 | |
| 39 | | 39 | |
| 40 | | 40 | |
| 41 | | 41 | |
| 42 | | 42 | |
| 43 | | 43 | |
| 44 | | 44 | |
| 45 | | 45 | |
| 46 | | 46 | |
| 47 | | 47 | |
| 48 | | 48 | |
| 49 | | 49 | |
| 50 | | 50 | |
| 51 | | 51 | |
| 52 | | 52 | |
| 53 | | 53 | |
| 54 | | 54 | |
| 55 | | 55 | |
| 56 | | 56 | |
| 57 | | 57 | |
| 58 | | 58 | |
| 59 | | 59 | |
| 60 | | 60 | |
| 61 | | 61 | |
| 62 | | 62 | |
| 63 | | 63 | |
| 64 | | 64 | |
| 65 | | 65 | |
| 66 | | 66 | |
| 67 | | 67 | |
| 68 | | 68 | |
| 69 | | 69 | |
| 70 | | 70 | |
| 71 | | 71 | |
| 72 | | 72 | |
| 73 | | 73 | |
| 74 | | 74 | |
| 75 | | 75 | |
| 76 | | 76 | |
| 77 | | 77 | |
| 78 | | 78 | |
| 79 | | 79 | |
| 80 | | 80 | |
| 81 | | 81 | |
| 82 | | 82 | |
| 83 | | 83 | |
| 84 | | 84 | |
| 85 | | 85 | |
| 86 | | 86 | |
| 87 | | 87 | |
| 88 | | 88 | |
| 89 | | 89 | |
| 90 | | 90 | |
| 91 | | 91 | |
| 92 | | 92 | |
| 93 | | 93 | |
| 94 | | 94 | |
| 95 | | 95 | |
| 96 | | 96 | |
| 97 | | 97 | |
| 98 | | 98 | |
| 99 | | 99 | |
| 100 | | 100 | |

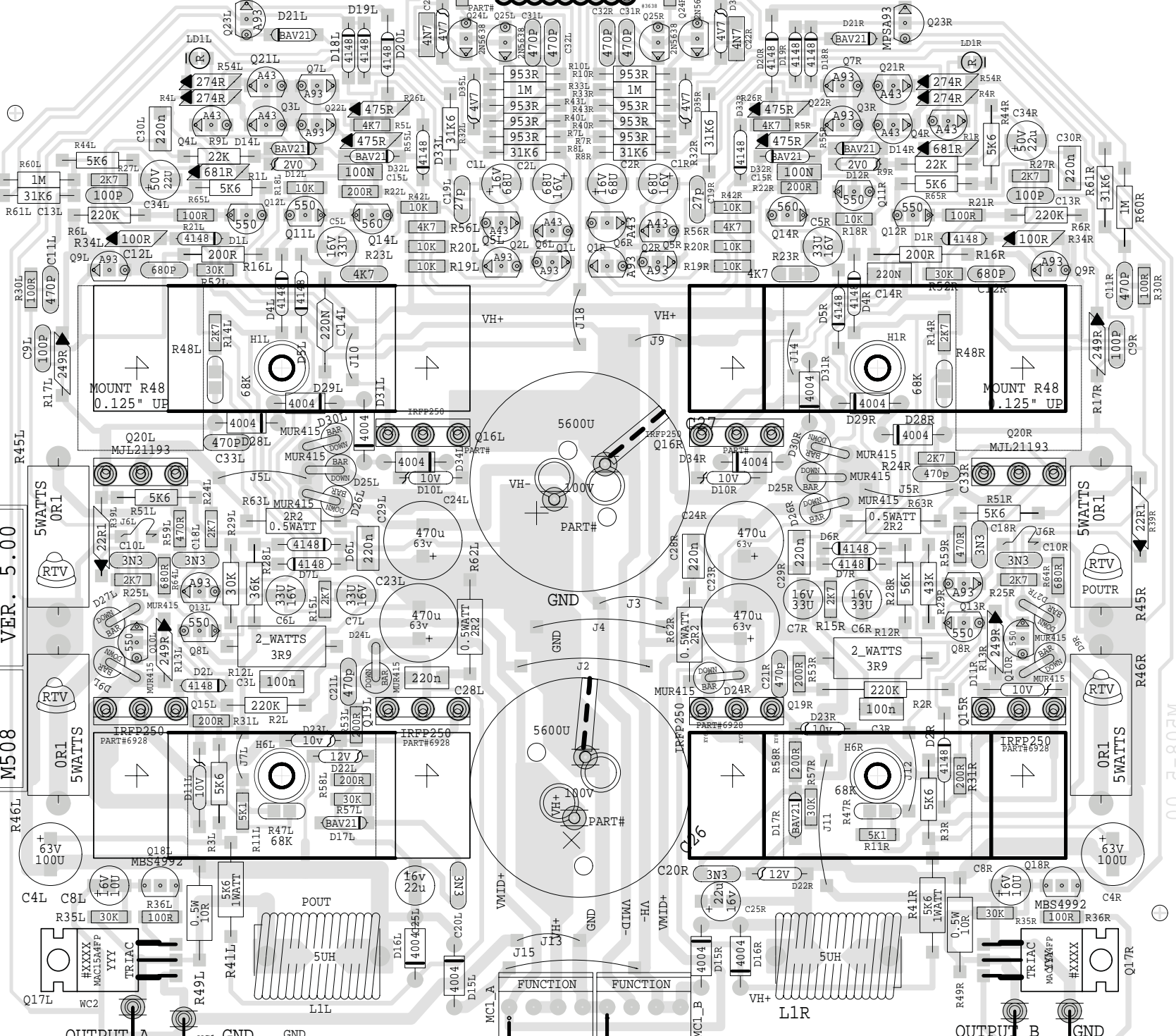
- PRODUCTION NOTES
- 7515
 - 7615
 - 7715
 - 7815
 - 7915
- HIGH CURRENT TO M508
 TURN ON/OFF FET CTRL
 VARIABLE HIGHRES FILTER
 VARIABLE COMPASS FILTER
 RIGHT AMPLIFIER OUTPUT TO SPEAKERS
 M508 FOR COM. M508

SOLDERSIDE M508-5.00

2 oz COPPER



SHEAR



"250.8X"28.VI=ESIS XMAIB
BLANK SIZE=17.35"X8.625"

GUIDE
ETCH

VER. 5.00

M508

OR1
5WATTS

OR1
5WATTS

OR1
5WATTS

OR1
5WATTS

OR1
5WATTS

OR1
5WATTS

OR1
5WATTS

OR1
5WATTS

OR1
5WATTS

OR1
5WATTS

OR1
5WATTS

OR1
5WATTS

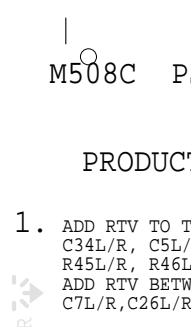
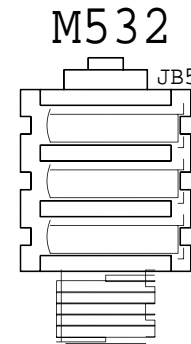
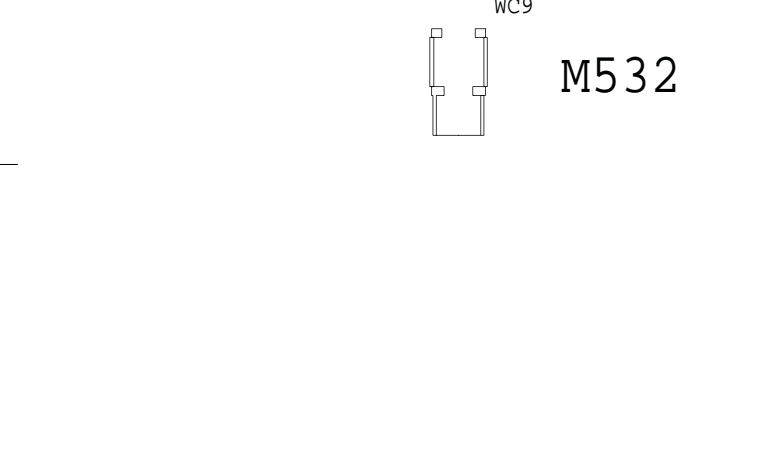
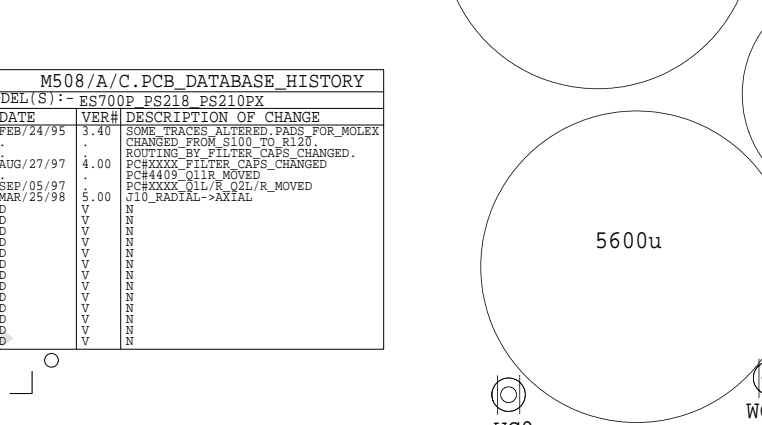
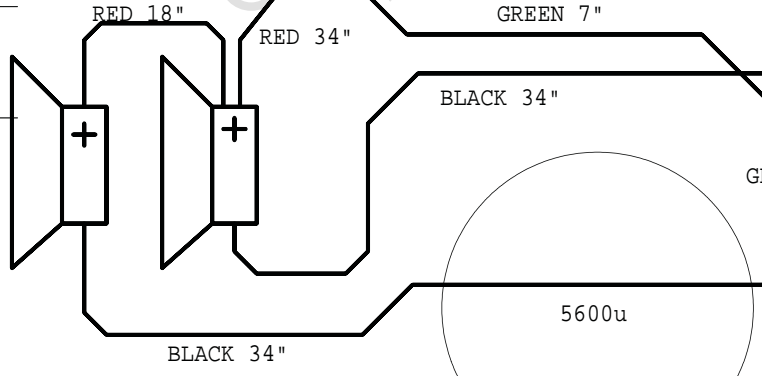
OR1
5WATTS

OR1
5WATTS

OR1
5WATTS

OR1
5WATTS

OR1
5WATTS



PRODUCTION NOTES

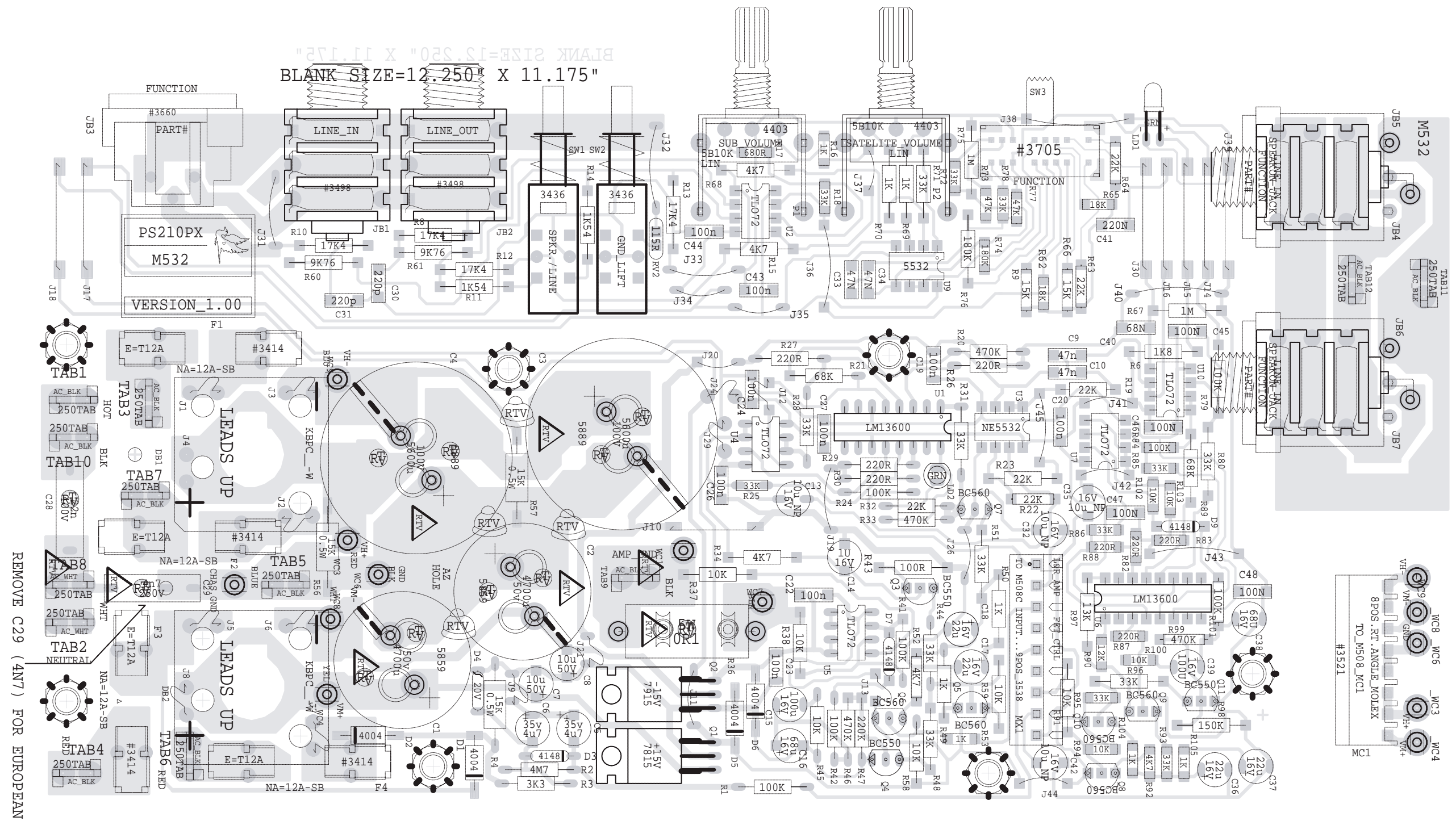
1. ADD RTV TO THE FOLLOWING COMPONENTS
C34L/R, C5L/R, C1L/R, C2L/R, L1L/R
R45L/R, R46L/R, C6L/R, C8L/R, C25L/R
ADD RTV BETWEEN C23L/R, C24L/R AND
C7L/R, C26L/R.
2. LD1L/R ARE BENT OVER FLAT TO PCB AND
RTV'D IN PLACE
3. C26 AND C27 ARE BROKEN AWAY AFTER WAVE
SOLDER AND SOLDERED MANUALLY TO THEIR
CORRECT POSITION. THESE CAPS ARE RTV'D
AND HELD IN POSITION WITH NYLON CABLE
TIES.
4. ADD RTV UNDER THE MOLEX RIBBON CABLE
BEFORE IT IS PUT INTO THE STRAIN RELIEF.
5. ADD TOOTH PICKS TO EYELETS BEFORE WAVE
SOLDER.
6. USE #8799 SCREW TO MOUNT Q17L/R.
7. BEND THERMISTORS R23L/R OVER FLAT TO PCB.

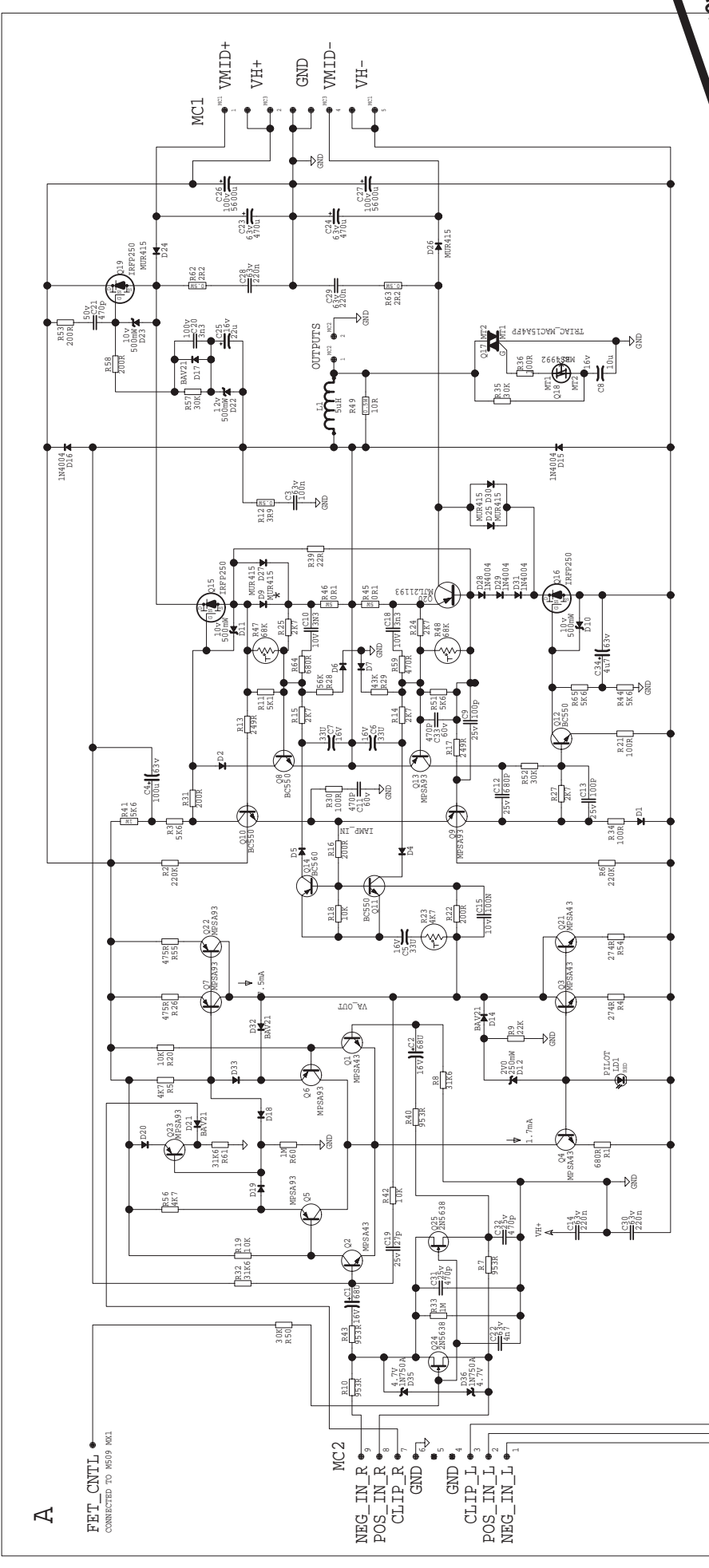
| M508/A/C PCB DATABASE HISTORY | | |
|-------------------------------|-----------|--|
| # | DATE | DESCRIPTION OF CHANGE |
| 1.00 | FEB/24/95 | MODEL(S):- ES700P PS218 PS210PX CHANGED FROM S100 TO R120. |
| 2.00 | AUG/27/97 | ROUTING BY FILTER CAPS CHANGED. PCBXXXXX FILTER CAPS CHANGED. |
| 3.00 | SEP/05/97 | PCB4409 Q1L/R MOVED PCBXXXXX Q1L/R, Q2L/R MOVED |
| 4.00 | MAR/25/98 | PCB10_RADIAL->AXIAL |

| M532.PCB_DATABASE_HISTORY | | | |
|---------------------------|------|------|-----------------------|
| MODEL(S):- PS210PX | | | |
| # | DATE | VER# | DESCRIPTION OF CHANGE |
| 1 | D | V | N |
| 2 | D | V | N |
| 3 | D | V | N |
| 4 | D | V | N |
| 5 | D | V | N |
| 6 | D | V | N |
| 7 | D | V | N |
| 8 | D | V | N |
| 9 | D | V | N |
| 10 | D | V | N |
| 11 | D | V | N |
| 12 | D | V | N |
| 13 | D | V | N |
| 14 | D | V | N |
| 15 | D | V | N |
| 16 | D | V | N |
| 17 | D | V | N |
| 18 | D | V | N |
| 19 | D | V | N |
| 20 | D | V | N |

PS210PX PRODUCTION NOTES

1. REMOVE C29 FOR(4N7)FOR EUROPEAN.
2. ADD RTV TO ALL CAPS AND RV2.



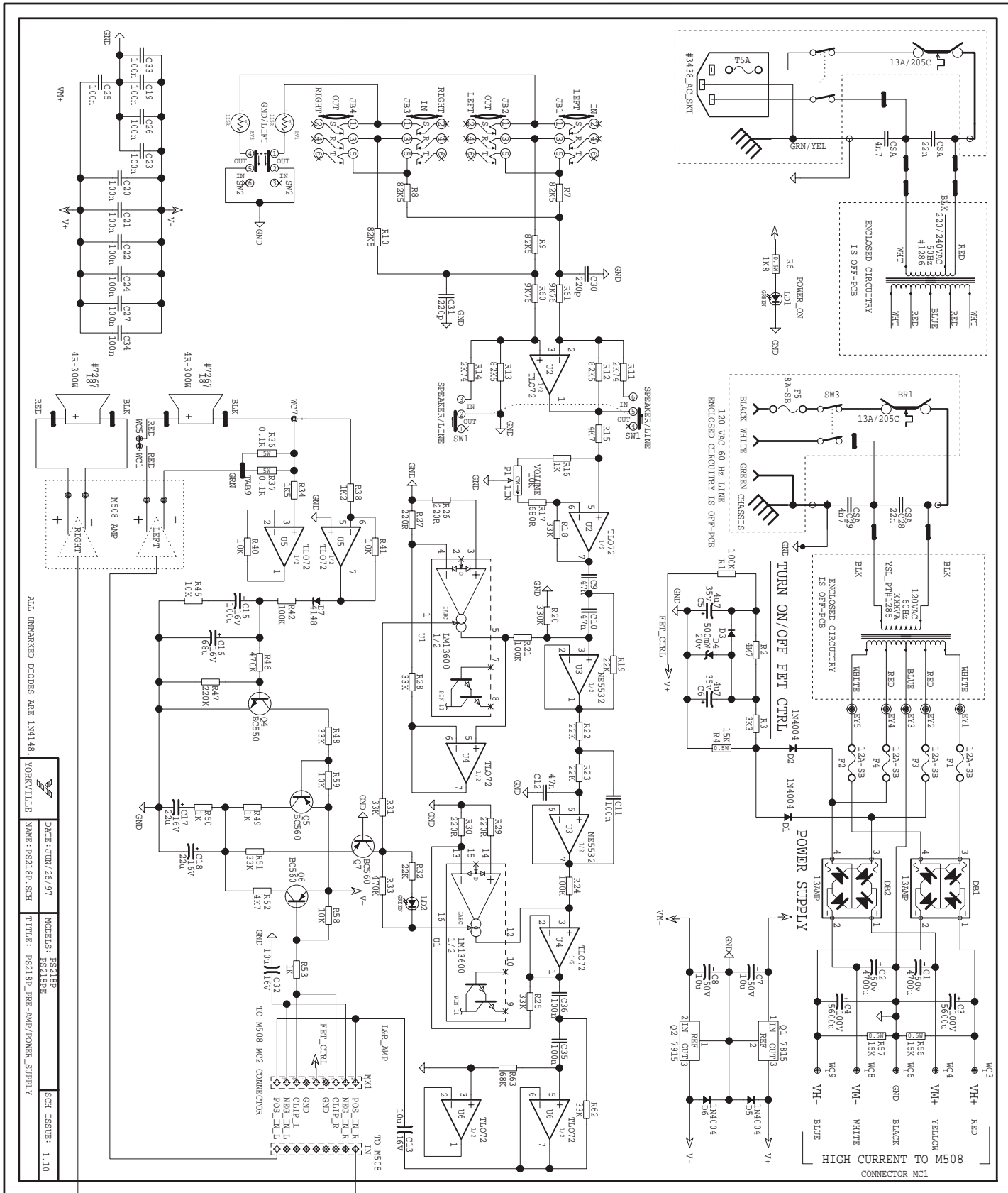


PLEASE NOTE PCB layout included with M531

SERVICE WARNING: POTENTIALS GREATER THAN 130VDC PRESENT. USE EXTREME CAUTION.

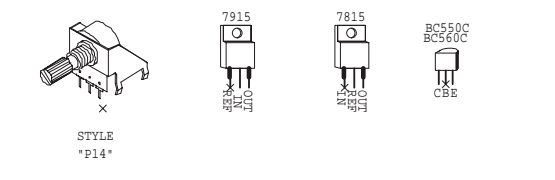
- CONNECTIONS TO THE LEFT CHANNEL AMPLIFIER**
- CLIP_L
 - POS_IN_L
 - NEG_IN_L
- CONNECTIONS TO THE RIGHT CHANNEL AMPLIFIER**
- M508 AMP
 - D5G
 - EBC
 - CBE

| | | | |
|-----------------|------------------|-----------------|------------------|
| DATE: 01/26/97 | DESIGNER: PS218P | DATE: 01/26/97 | DESIGNER: PS218P |
| NAME: M531A.SCH | PCB: M531A.PCB | NAME: M531A.SCH | PCB: M531A.PCB |
| YORKVILLE | | YORKVILLE | |
| TITLE: PWR_AMP | | TITLE: PWR_AMP | |



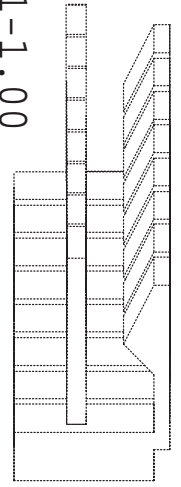
M531.SCH DATABASE HISTORY

| # | DATE | VER# | DESCRIPTION OF CHANGE |
|---|-----------|------|--|
| 1 | JAN/31/97 | | FIRST PROTYPE |
| 2 | MAR/12/97 | | PCB CHG 1K -> 2K2 U5A NOT USED MX1_ALTRD |
| 3 | MAY/25/97 | | PCB CHG U3 TL072 -> NE5532 |
| 4 | JUN/26/97 | 1.10 | CORRECTIONS TO CLARIFY |

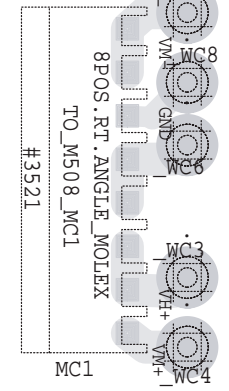


STYLE *P14*

PCBMECH
 ASSEMBLY
 M531-1.00



9_PIN
 MOLEX

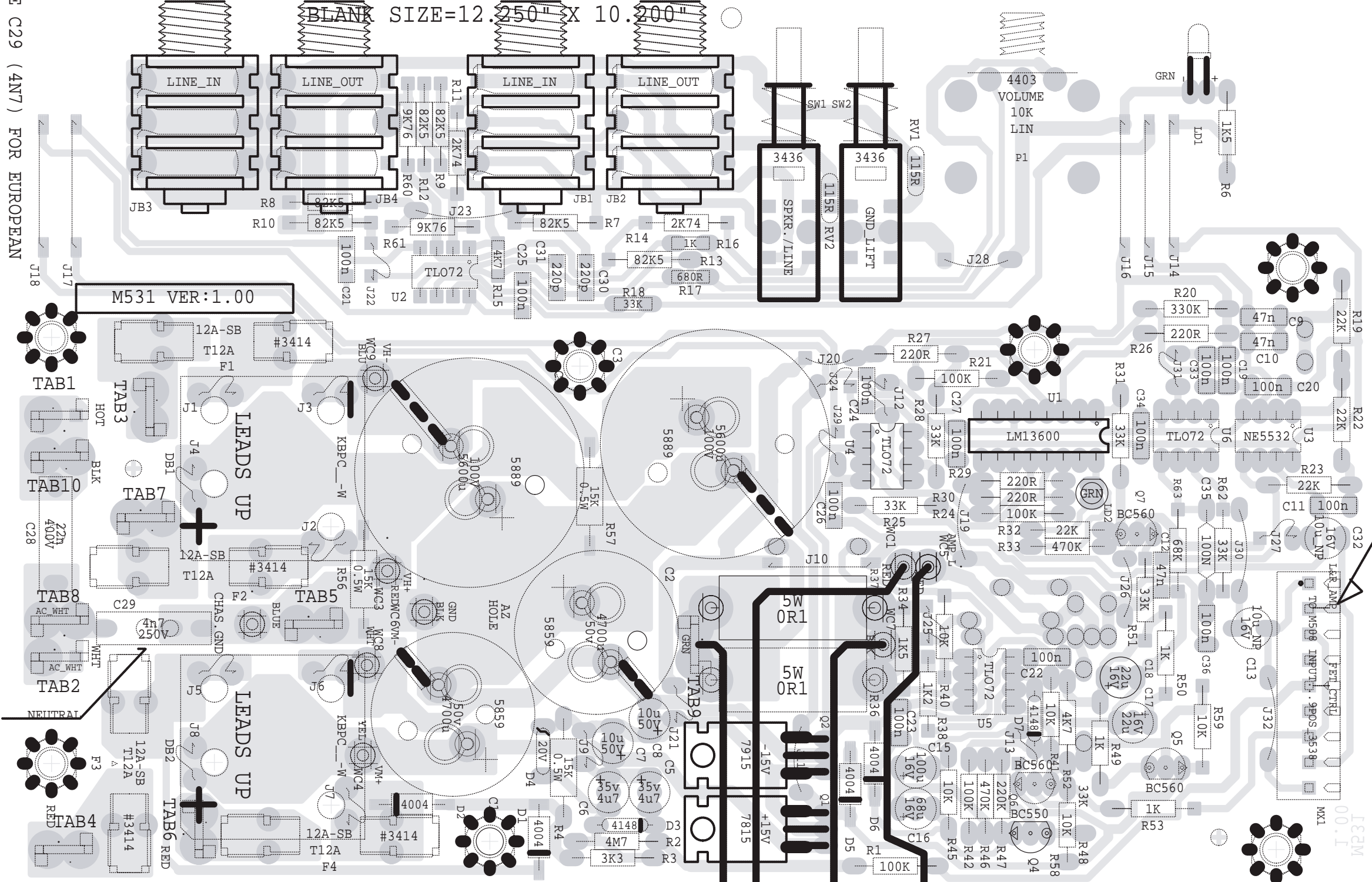


8POS. RT. ANGLE MOLEX
 TO_M508_MC1
 #3521

MC1

BLANK SIZE=12.250" X 10.200"

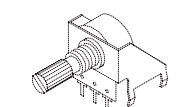
REMOVE C29 (4N7) FOR EUROPEAN



M531.PCB_DATABASE_HISTORY

| # | DATE | VER# | DESCRIPTION OF CHANGE |
|----|-----------|------|-----------------------------------|
| 1 | FEB/97 | 1.P1 | 1ST PROTOTYPE |
| 2 | FEB/17/97 | 1.P2 | AMP-INS REPLACED BY EYELETS |
| 3 | MAR/12/97 | . | R38 1K->2K2 R35,R39,R43,C14,D8,Q3 |
| 4 | . | . | DELETED POLARITY L&R AT MX1 |
| 5 | . | . | REVERSED |
| 6 | MAR/25/97 | 1.P3 | PC#5349 U3 TL072-->NE5532 |
| 7 | APR/23/97 | 1.00 | FIRST PRODUCTION |
| 8 | MAY/30/97 | 1.01 | PC#5391 R38_2K2->1K2 |
| 9 | D | V | N |
| 10 | D | V | N |
| 11 | D | V | N |

PRODUCTION NOTES
 FOR Q1 Q2 USE #8742 THREAD-FORMING
 WITH A #3501 BELL WASHER



STYLE
 "P14"

INSERT 35" SPKR WIRES
 BLK TO WC7
 RED TO WC5

