



SERVICE MANUAL

MODEL TYPE: YS1054

UCS1P

WEB ACCESS: <http://www.yorkville.com>

WORLD HEADQUARTERS CANADA

Yorkville Sound
550 Granite Court
Pickering, Ontario
L1W-3Y8 CANADA

Voice: (905) 837-8481
Fax: (905) 837-8746

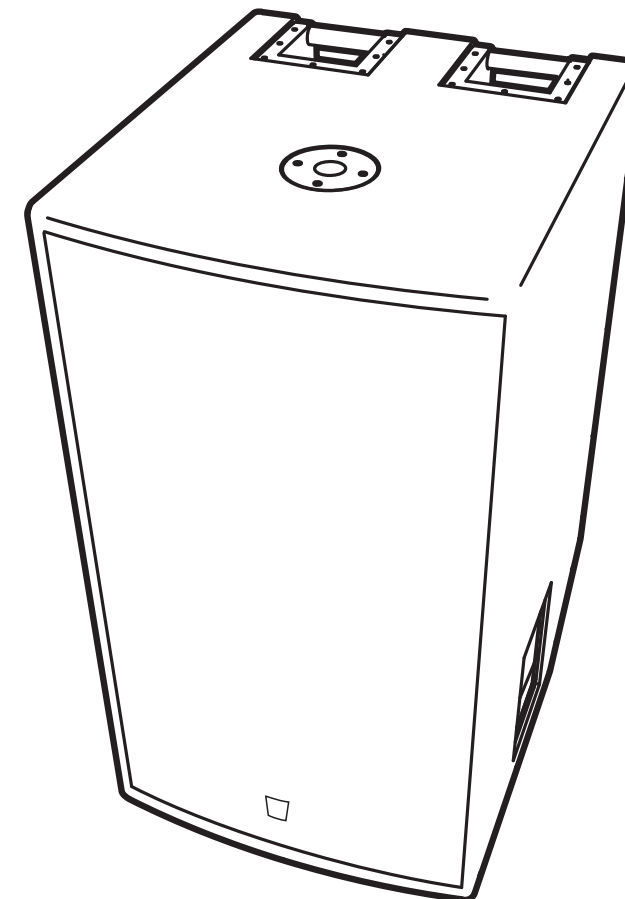
U.S.A.

Yorkville Sound Inc.
4625 Witmer Industrial Estate
Niagara Falls, New York
14305 USA

Voice: (716) 297-2920
Fax: (716) 297-3689



Quality and Innovation Since 1963
Printed in Canada



IMPORTANT SAFETY INSTRUCTIONS



This lightning flash with arrowhead symbol, within an equilateral triangle, is intended to alert the user to the presence of uninsulated "dangerous voltage" within the product's enclosure that may be of sufficient magnitude to constitute a risk of electric shock to persons.

Ce symbole d'éclair avec tête de flèche dans un triangle équilatéral est prévu pour alerter l'utilisateur de la présence d'un « voltage dangereux » non-isolé à proximité de l'enceinte du produit qui pourrait être d'ampleur suffisante pour présenter un risque de choqué électrique.



S2125A

CAUTION AVIS

RISK OF ELECTRIC SHOCK
DO NOT OPEN

RISQUE DE CHOC ELECTRIQUE
NE PAS OUVRIR



The exclamation point within an equilateral triangle is intended to alert the user to the presence of important operating and maintenance (servicing) instructions in the literature accompanying the appliance.

Le point d'exclamation à l'intérieur d'un triangle équilatéral est prévu pour alerter l'utilisateur de la présence d'instructions importantes dans la littérature accompagnant l'appareil en ce qui concerne l'opération et la maintenance de cet appareil.

FOLLOW ALL INSTRUCTIONS

Instructions pertaining to a risk of fire,
electric shock, or injury to a person

CAUTION: TO REDUCE THE RISK OF ELECTRIC SHOCK, DO NOT REMOVE COVER (OR BACK).

NO USER SERVICEABLE PARTS INSIDE.

REFER SERVICING TO QUALIFIED SERVICE PERSONNEL.

SUIVEZ TOUTES LES INSTRUCTIONS

Instructions relatives au risque de feu,
choc électrique, ou blessures aux personnes

AVIS: AFIN DE REDUIRE LES RISQUE DE CHOC ELECTRIQUE, N'ENLEVEZ PAS LE COUVERT (OU LE PANNEAU ARRIERE) NE CONTIENT AUCUNE PIECE

REPARABLE PAR L'UTILISATEUR.

CONSULTEZ UN TECHNICIEN QUALIFIE POUR L'ENTRETIEN

Read Instructions: The Owner's Manual should be read and understood before operation of your unit. Please, save these instructions for future reference and heed all warnings.

Clean only with dry cloth.

Packaging: Keep the box and packaging materials, in case the unit needs to be returned for service.

Warning: To reduce the risk of fire or electric shock, do not expose this apparatus to rain or moisture. *Do not use this apparatus near water!*

Warning: When using electric products, basic precautions should always be followed, including the following:

Power Sources

Your unit should be connected to a power source only of the voltage specified in the owners manual or as marked on the unit. This unit has a polarized plug. Do not use with an extension cord or receptacle unless the plug can be fully inserted. Precautions should be taken so that the grounding scheme on the unit is not defeated.

Hazards

Do not place this product on an unstable cart, stand, tripod, bracket or table. The product may fall, causing serious personal injury and serious damage to the product. Use only with cart, stand, tripod, bracket, or table recommended by the manufacturer or sold with the product. Follow the manufacturer's instructions when installing the product and use mounting accessories recommended by the manufacturer.

The apparatus should not be exposed to dripping or splashing water; no objects filled with liquids should be placed on the apparatus.

Terminals marked with the "lightning bolt" are hazardous live; the external wiring connected to these terminals require installation by an instructed person or the use of ready made leads or cords.

Ensure that proper ventilation is provided around the appliance. Do not install near any heat sources such as radiators, heat registers, stoves, or other apparatus (including amplifiers) that produce heat.

No naked flame sources, such as lighted candles, should be placed on the apparatus.

Power Cord

Do not defeat the safety purpose of the polarized or grounding-type plug. A polarized plug has two blades with one wider than the other. A grounding type plug has two blades and a third grounding prong. The wide blade or the third prong are provided for your safety. If the provided plug does not fit into your outlet, consult an electrician for replacement of the obsolete outlet. The AC supply cord should be routed so that it is unlikely that it will be damaged. If the AC supply cord is damaged DO NOT OPERATE THE UNIT.

Unplug this apparatus during lightning storms or when unused for long periods of time.

Service

The unit should be serviced only by qualified service personnel.

Veillez Lire le Manuel: Il contient des informations qui devraient être comprises avant l'opération de votre appareil. Conservez. Gardez S.V.P. ces instructions pour consultations ultérieures et observez tous les avertissements.

Nettoyez seulement avec le tissu sec.

Emballage: Conservez la boîte au cas où l'appareil devait être retourner pour réparation.

Avertissement: Pour réduire le risque de feu ou la décharge électrique, n'exposez pas cet appareil à la pluie ou à l'humidité. *N'utilisez pas cet appareil près de l'eau!*

Attention: Lors de l'utilisation de produits électrique, assurez-vous d'adhérer à des précautions de bases incluant celle qui suivent:

Alimentation

L'appareil ne doit être branché qu'à une source d'alimentation correspondant au voltage spécifié dans le manuel ou tel qu'indiqué sur l'appareil. Cet appareil est équipé d'une prise d'alimentation polarisée. Ne pas utiliser cet appareil avec un cordon de raccordement à moins qu'il soit possible d'insérer complètement les trois lames. Des précautions doivent être prises afin d'éviter que le système de mise à la terre de l'appareil ne soit désengagé.

Risque

Ne pas placer cet appareil sur un chariot, un support, un trépied ou une table instables. L'appareil pourrait tomber et blesser quelqu'un ou subir des dommages importants. Utiliser seulement un chariot, un support, un trépied ou une table recommandés par le fabricant ou vendus avec le produit. Suivre les instructions du fabricant pour installer l'appareil et utiliser les accessoires recommandés par le fabricant.

Il convient de ne pas placer sur l'appareil de sources de flammes nues, telles que des bougies allumées.

L'appareil ne doit pas être exposé à des égouttements d'eau ou des éclaboussures et qu'aucun objet rempli de liquide tel que des vases ne doit être placé sur l'appareil.

Assurez que l'appareil est fourni de la propre ventilation. Ne procédez pas à l'installation près de source de chaleur tels que radiateurs, registre de chaleur, fours ou autres appareils (incluant les amplificateurs) qui produisent de la chaleur.

Les dispositifs marqués d'une symbole "d'éclair" sont des parties dangereuses au toucher et que les câblages extérieurs connectés à ces dispositifs de connexion extérieure doivent être effectués par un opérateur formé ou en utilisant des cordons déjà préparés.

Cordon d'Alimentation

Ne pas enlever le dispositif de sécurité sur la prise polarisée ou la prise avec tige de mise à la masse du cordon d'alimentation. Une prise polarisée dispose de deux lames dont une plus large que l'autre. Une prise avec tige de mise à la masse dispose de deux lames en plus d'une troisième tige qui connecte à la masse. La lame plus large ou la tige de mise à la masse est prévu pour votre sécurité. La prise murale est désuète si elle n'est pas conçue pour accepter ce type de prise avec dispositif de sécurité. Dans ce cas, contactez un électricien pour faire remplacer la prise murale. Évitez d'endommager le cordon d'alimentation. **N'UTILISEZ PAS L'APPAREIL** si le cordon d'alimentation est endommagé.

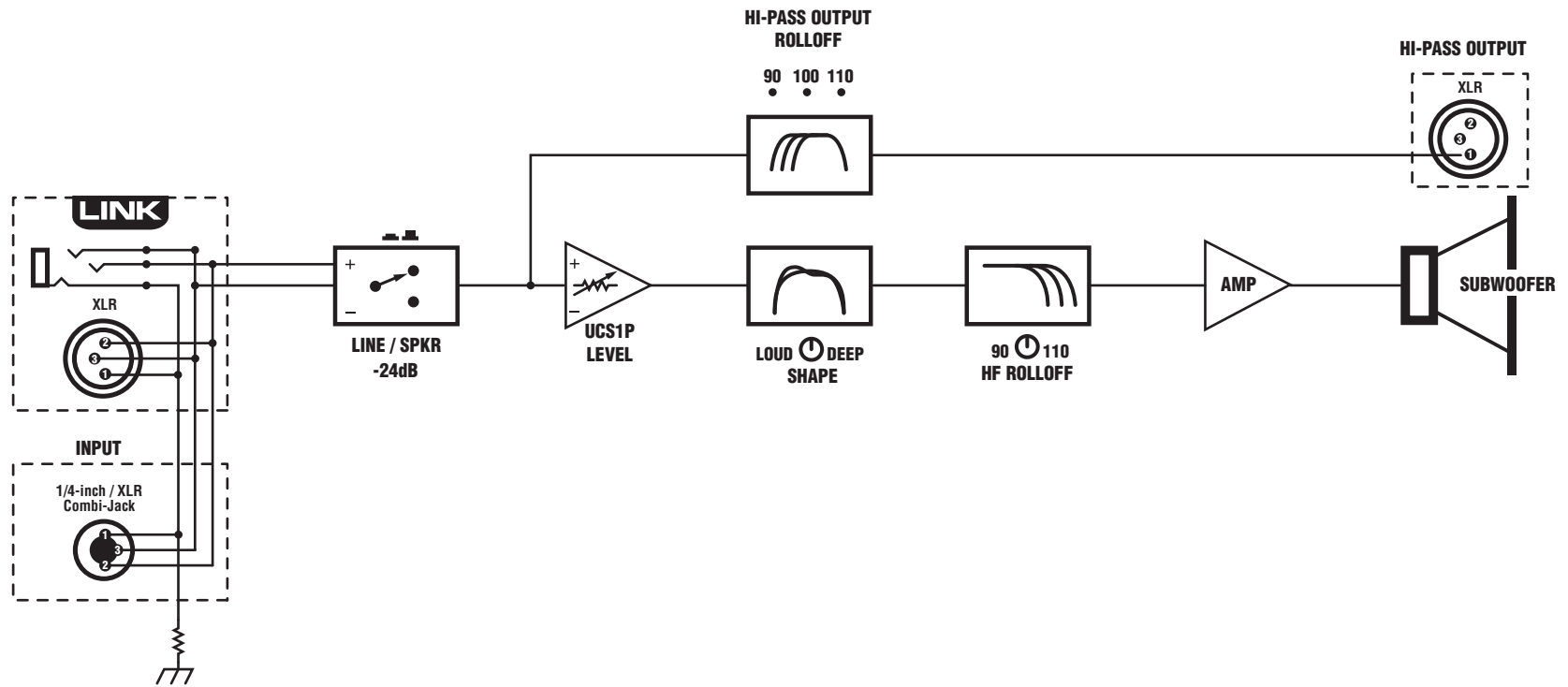
Débranchez cet appareil durant les orages ou si inutilisé pendant de longues périodes.

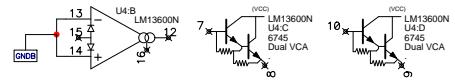
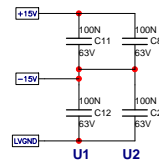
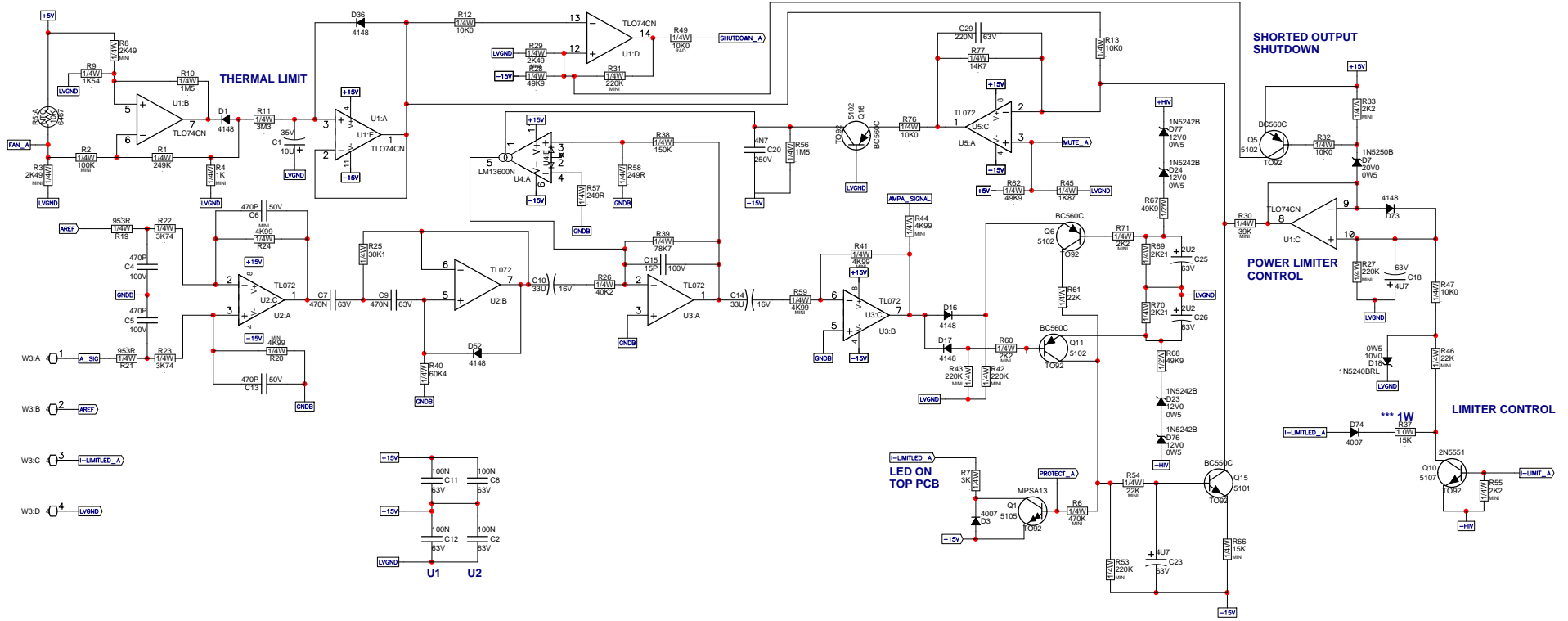
Service

Consultez un technicien qualifié pour l'entretien de votre appareil.

Block Diagram for UCS1P

DESIGNED & MANUFACTURED BY YORKVILLE SOUND





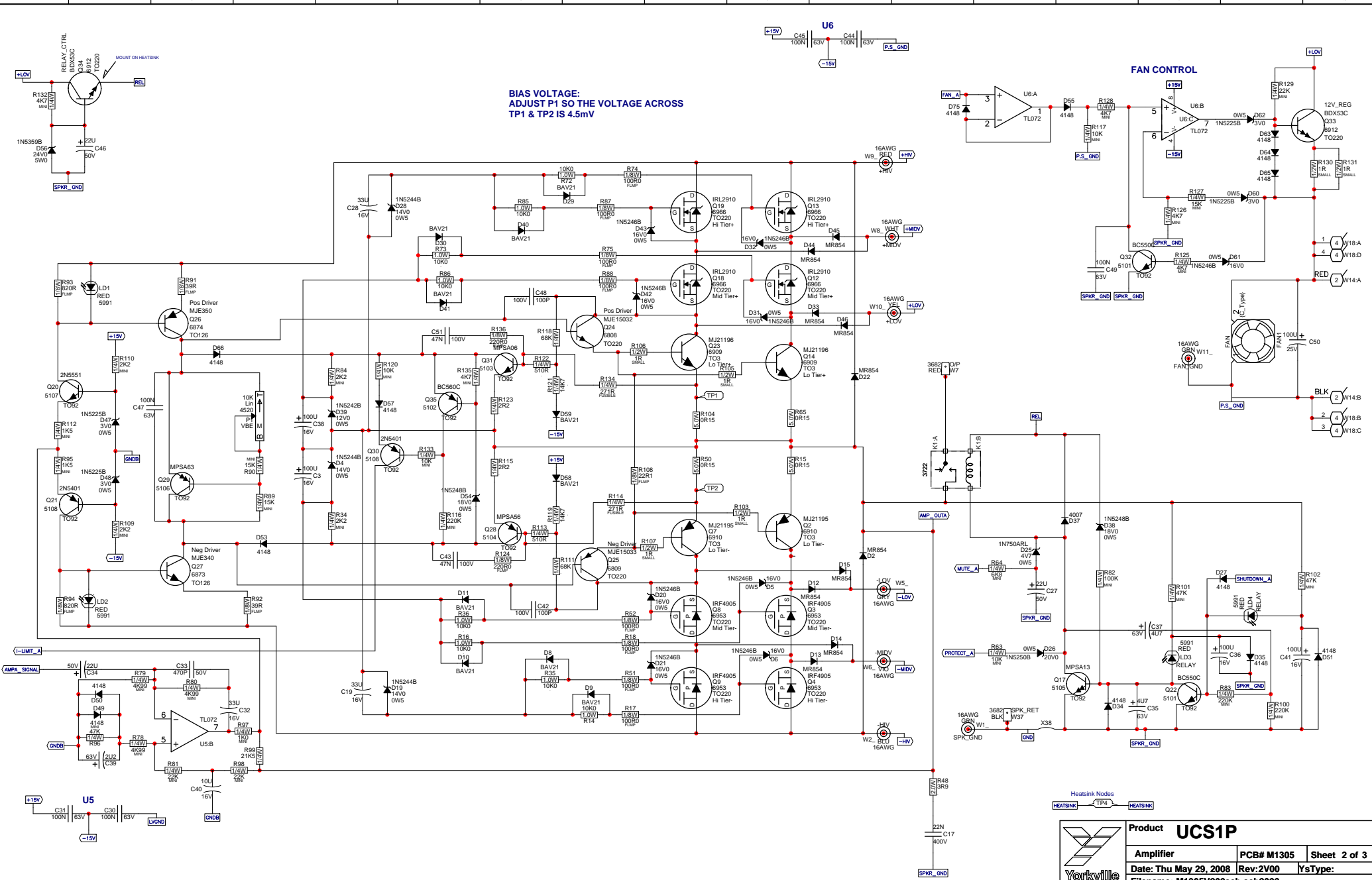
SHORTED OUTPUT SHUTDOWN

POWER LIMITER CONTROL

LIMITER CONTROL



Product UCS1P		
Ampln	PCB# M1305	Sheet 1 of 3
Date: Thu May 29, 2008	Rev: 2V00	YsType:
Filename: M1305V200sch.sch.2002		



BIAS VOLTAGE:
 ADJUST P1 SO THE VOLTAGE ACROSS
 TP1 & TP2 IS 4.5mV

FAN CONTROL



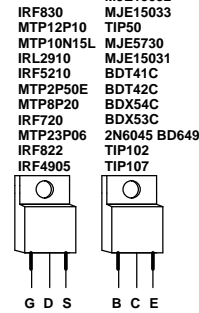
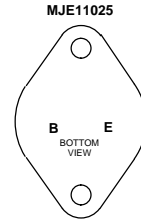
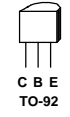
Product UCS1P		
Amplifier	PCB# M1305	Sheet 2 of 3
Date: Thu May 29, 2008	Rev: 2V00	YsType:
Filename: M1305V200sch.sch2002		

M1305 Database History			
MODEL(S):-	UCS1P	VER#	DESCRIPTION OF CHANGE
1		1.00	FIRST PROTO
2			Changed W3&W50 to ribbons. NEW ART REQUIRED.
3			Changed FET clip bolts.
4			R100 1M2->220k
5			Moved supply caps out and eyelets to more convenient place
6			Updated pattern on spring clips screws (now larger holes)
7		2.00	Removed copper rings from spacer holes
8			Created new AI files per PC7326
9			AH, PC7583: Change pin out of Fan Connector
10	D		N
11	D		N
12	D		N
13	D		N

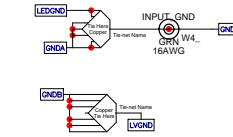
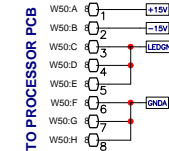
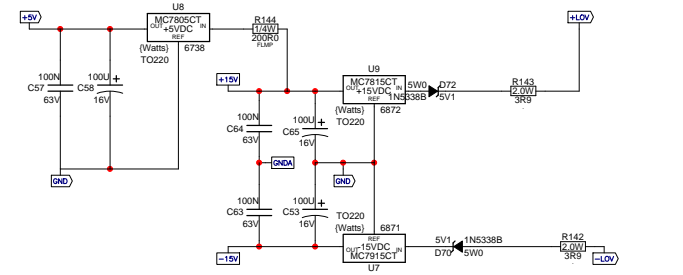
M1305 PENDING CHANGES		
MODEL(S):-	UCS1P	PENDING CHANGE
1	PC	X
2	PC	X
3	PC	X
4	PC	X
5	PC	X
6	PC	X

*PLACE IMPLEMENTED CHANGES INTO BOARD HISTORY

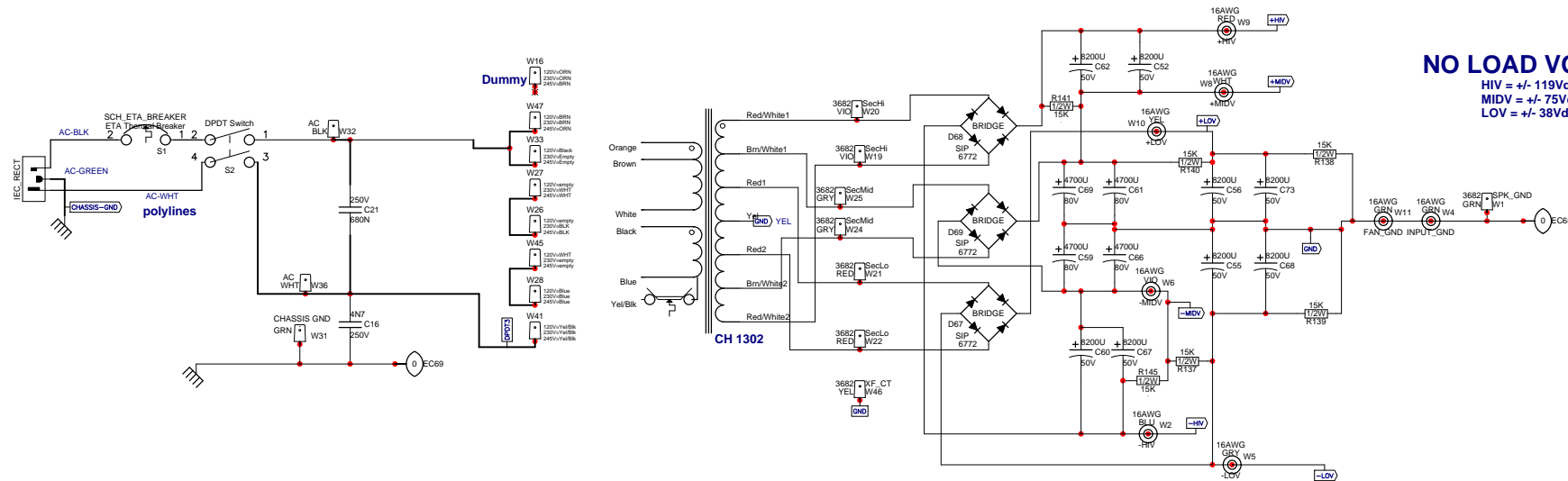
2N5401
2N5551
MPSA06
MPSA13
MPSA43
MPSA56
MPSA63



IRF830
MTP12P10
MTP10N15L
IRL2910
MJE5730
MJE15031
BDT41C
BDT42C
BDX54C
BDX53C
2N6045 BD649
IRF720
MTP23P06
IRF822
IRF4905



NO LOAD VOLTAGES:
HIV = +/- 119Vdc
MIDV = +/- 75Vdc
LOV = +/- 38Vdc



Product UCS1P		
Power Supply	PCB# M1305	Sheet 3 of 3
Date: Thu May 29, 2008	Rev: 2V00	YsType:
Filename: M1305V200sch.sch2002		

BlankSize - 16000x10000

StepAndRepeat - X0@0.000Y0@0.000

BlankSize - 16000x10000

Into Wave



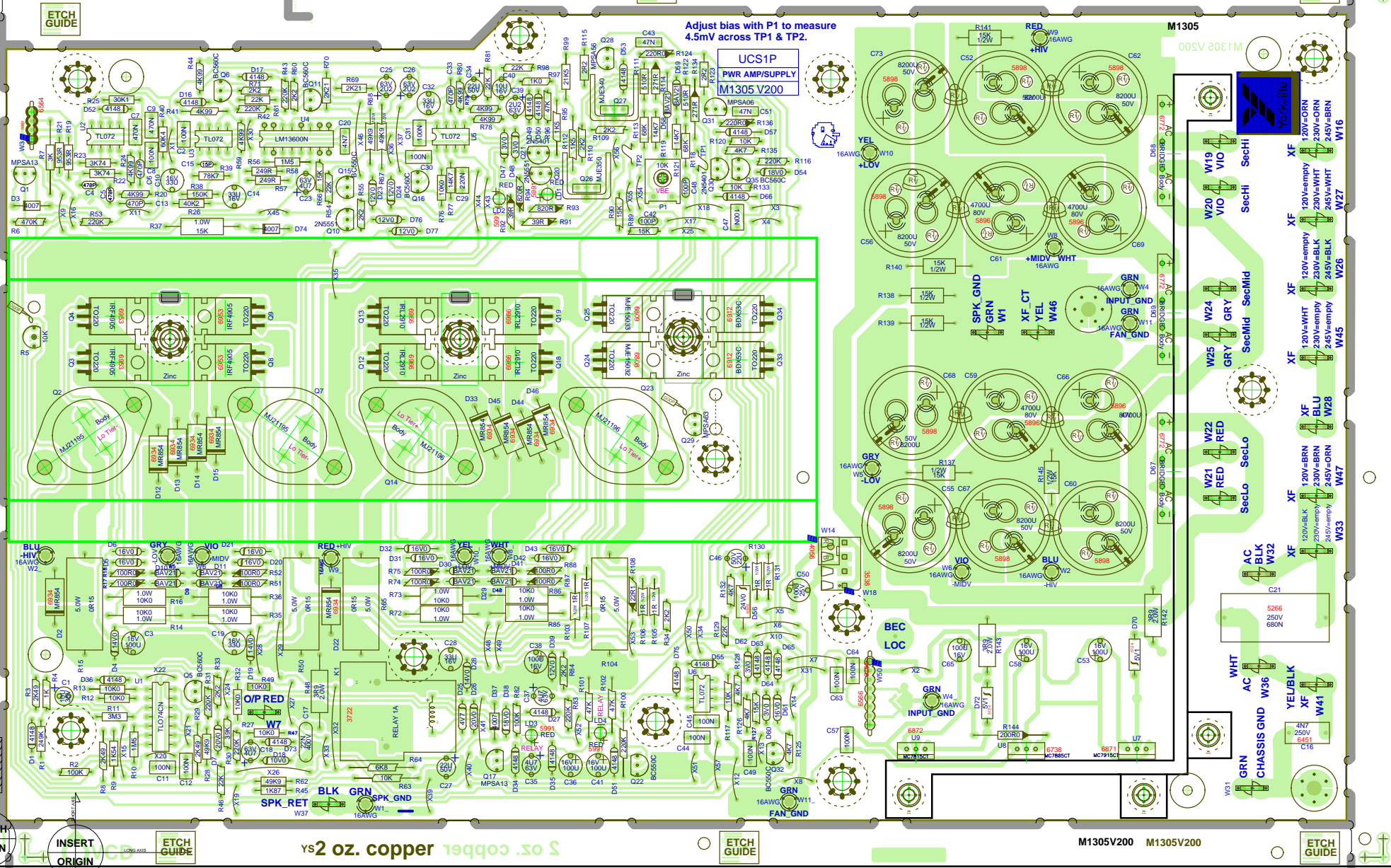
ETCH GUIDE

ETCH GUIDE

ETCH GUIDE

Adjust bias with P1 to measure 4.5mV across TP1 & TP2.

UCS1P
PWR AMP/SUPPLY
M1305 V200



- W19 VIO 4 SecHi
- W20 VIO 4 SecHi
- W21 RED 4 SecLo
- W22 RED 4 SecLo
- W23 GRY 4 SecMid
- W24 GRY 4 SecMid
- W25 GRY 4 SecMid
- W26 BLK 4 SecLo
- W27 BLU 4 SecLo
- W28 BRN 4 SecLo
- W29 BRN 4 SecLo
- W30 BRN 4 SecLo
- W31 GRN 4 Chassis GND
- W32 AC BLK 4
- W33 BLK 4
- W34 YEL/BLK 4
- W35 YEL 4
- W36 WHT 4
- W37 AC WHT 4
- W38 BLK 4
- W39 BLK 4
- W40 BLK 4
- W41 YEL/BLK 4
- W42 BLU 4
- W43 BRN 4
- W44 BRN 4
- W45 BRN 4
- W46 YEL CT 4
- W47 BRN 4
- W48 BRN 4
- W49 BRN 4
- W50 BRN 4
- W51 BRN 4
- W52 BRN 4
- W53 BRN 4
- W54 BRN 4
- W55 BRN 4
- W56 BRN 4
- W57 BRN 4
- W58 BRN 4
- W59 BRN 4
- W60 BRN 4
- W61 BRN 4
- W62 BRN 4
- W63 BRN 4
- W64 BRN 4
- W65 BRN 4
- W66 BRN 4
- W67 BRN 4
- W68 BRN 4
- W69 BRN 4
- W70 BRN 4
- W71 BRN 4
- W72 BRN 4
- W73 BRN 4
- W74 BRN 4
- W75 BRN 4
- W76 BRN 4
- W77 BRN 4
- W78 BRN 4
- W79 BRN 4
- W80 BRN 4
- W81 BRN 4
- W82 BRN 4
- W83 BRN 4
- W84 BRN 4
- W85 BRN 4
- W86 BRN 4
- W87 BRN 4
- W88 BRN 4
- W89 BRN 4
- W90 BRN 4
- W91 BRN 4
- W92 BRN 4
- W93 BRN 4
- W94 BRN 4
- W95 BRN 4
- W96 BRN 4
- W97 BRN 4
- W98 BRN 4
- W99 BRN 4
- W100 BRN 4

ys2 oz. copper

M1305V200 M1305V200

ETCH GUIDE

ETCH GUIDE

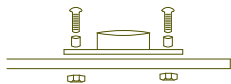
SEE LAYOUT DOCUMENTATION

↑ SEE LAYOUT DIAGRAM ↑

M1305 PRODUCTION NOTES

1 - USE THREE #8786 SCREWS INSERTED FROM THE BOTTOM OF THE PCB TO HOLD TRANSISTOR CLIPS IN PLACE. USE #8841 NUTS ON THE TOP SIDE OF THE CLIP.

2 - MOUNT Q2,Q7,Q14,Q23 SCREWS FROM THE TOP



3 - BOARD ASSEMBLY: INSERT R5 #6467 10K THERMISTOR BY HAND

4 - FILL SPACE BETWEEN HEATSPREADER AND Q29 AND R5 WITH THERMAL GOOP

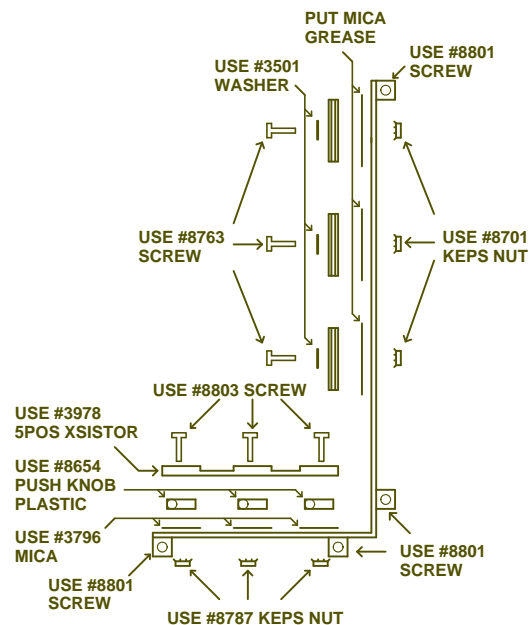
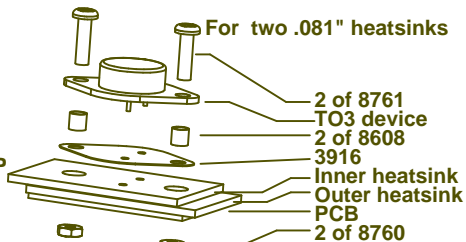


5 - INSERT #8829 THROUGH THE TWO TOOLING HOLES ON THE HEATSPREADER

6 - INSERT SCREWS ON POWER SUPPLY HEAT SPREADER FROM THE BOTTOM IN ORDER TO TAP INTO THE ALUMINUM

7 - INSERT POWER SUPPLY WIRES AND ATTACH RECTIFIERS TO HEATSINK INSERTING POWER SUPPLY CAPACITORS

8 - RTV LARGE ELECTROLYTIC CAPACITORS TOGETHER, RTV SMALL ELECTROLYTICS TO THE BOARD



↓ SEE HISTORY AND PIN-OUT TABLES ↓



SEE PRODUCTION NOTES



M1305 Database History

MODEL(S):-		UCS1P	
#	DATE	VER#	DESCRIPTION OF CHANGE
1	9-MAR-2007	1.00	FIRST PROTO
2	.	.	Changed W3&W50 to ribbons. NEW ART REQUIRED.
3	23-MAR-2007	.	Changed FET clip bolts.
4	.	.	R100 1M2->220k
5	7-MAY-2007	.	Moved supply caps out and eyelets to more convenient place
6	.	.	Updated pattern on spring clips screws (now larger holes!)
7	7-MAR-2008	2.00	Removed copper rings from spacer holes
8	.	.	Created new AI files per PC7326
9	28-MAY-2008	.	AH, PC7583: Change pin out of Fan Connector
10	D	V	N
11	D	V	N
12	D	V	N
13	D	V	N

M1305 PENDING CHANGES

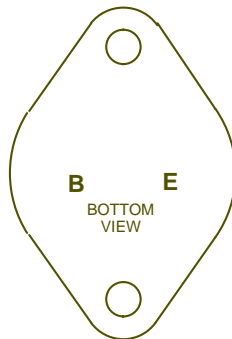
MODEL(S):-		UCS1P	
#	PC#	PENDING CHANGE	
1	PC	X	
2	PC	X	
3	PC	X	
4	PC	X	
5	PC	X	
6	PC	X	

MJE11025

MJE11025

MJE11025

MJE11025



MJE15032

MJE15033

TIP50

MJE5730

MJE15031

BDT41C

BDT42C

BDX54C

BDX53C

2N6045 BD649

TIP102

TIP107

MJE15032

MJE15033

TIP50

MJE5730

MJE15031

BDT41C

BDT42C

BDX54C

BDX53C

2N6045 BD649

TIP102

TIP107

MJE15032

IRF830

MTP12P10

MTP10N15L

IRL2910

IRF5210

MTP2P50E

MTP8P20

IRF720

MTP23P06

IRF822

IRF4905

MJE15032

MJE15033

TIP50

MJE5730

MJE15031

BDT41C

BDT42C

BDX54C

BDX53C

2N6045 BD649

TIP102

TIP107

MJE15032

BD139

BD237

BD238

MJE340

MJE350

MJE271

MJE270

BD140

MJE15032

MJE15033

TIP50

MJE5730

MJE15031

BDT41C

BDT42C

BDX54C

BDX53C

2N6045 BD649

TIP102

TIP107

2N5401

2N5551

MPSA06

MPSA13

MPSA43

MPSA56

MPSA63

MJE15032

MJE15033

TIP50

MJE5730

MJE15031

BDT41C

BDT42C

BDX54C

BDX53C

2N6045 BD649

TIP102

TIP107

BC550C

BC560C

MJE15032

MJE15033

TIP50

MJE5730

MJE15031

BDT41C

BDT42C

BDX54C

BDX53C

2N6045 BD649

TIP102

TIP107

MJE15032

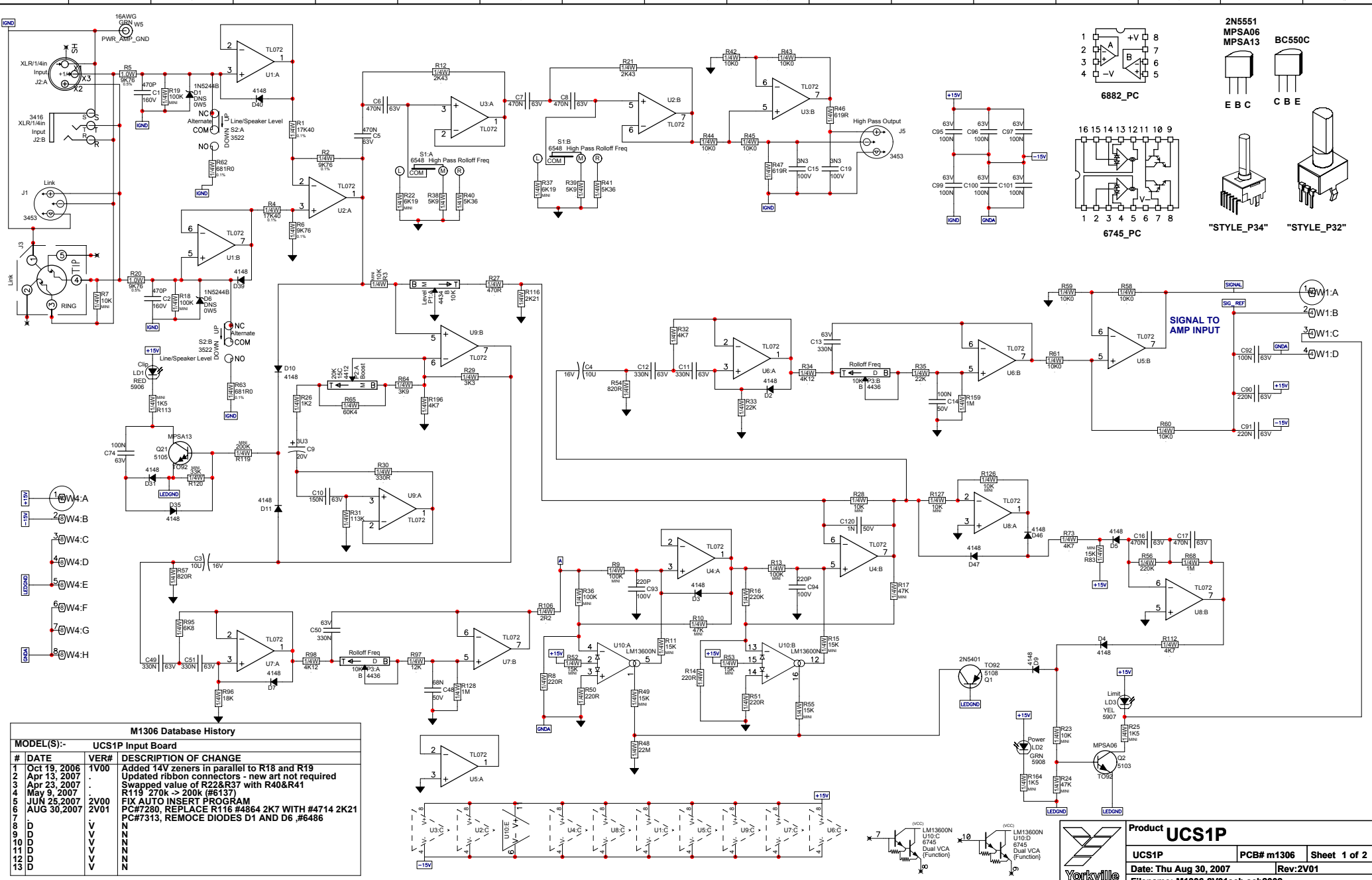
*PLACE IMPLEMENTED CHANGES INTO BOARD HISTORY

BlankSize - 16000x10000

M1305 V200

2 oz. copper





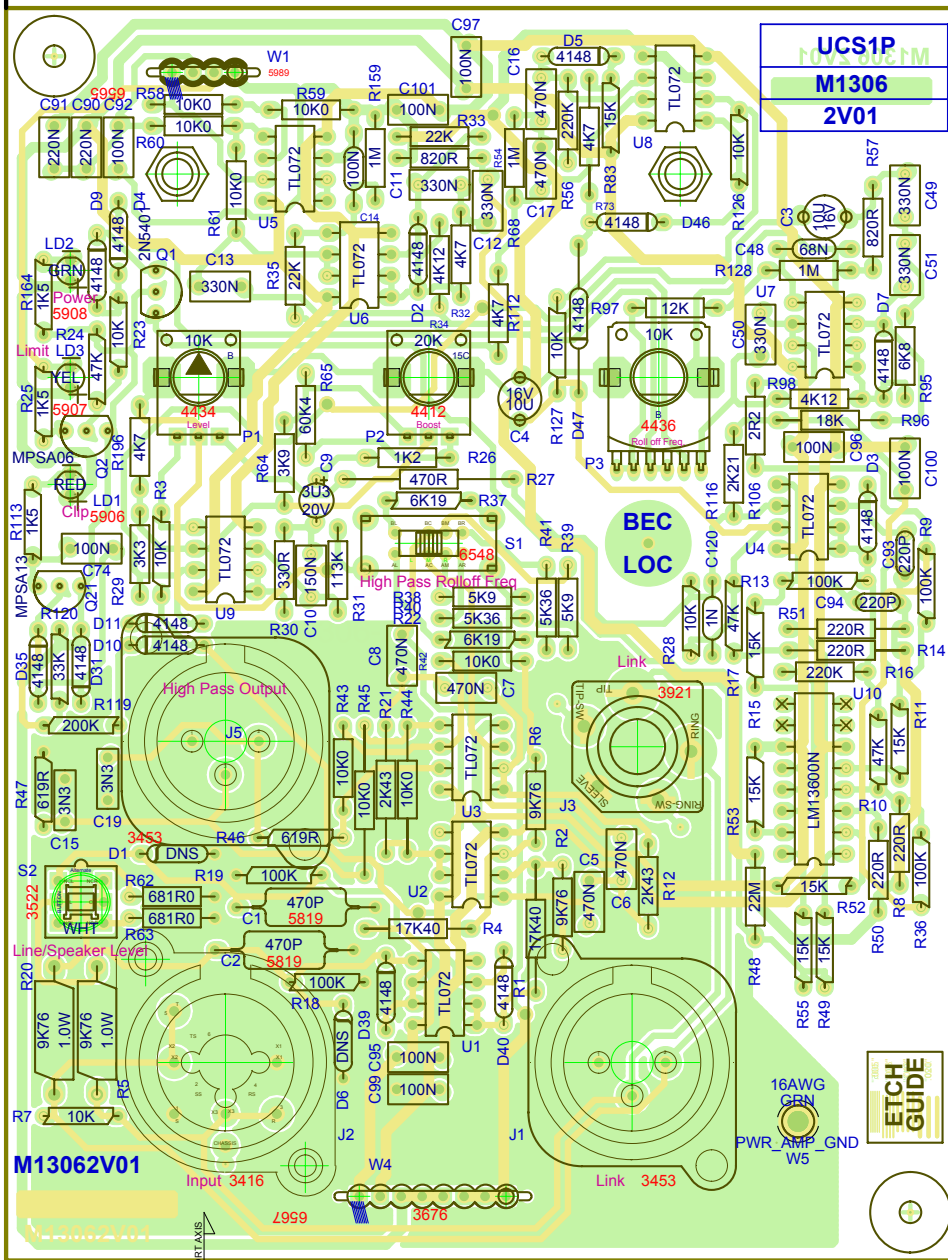
M1306 Database History

MODEL(S):-		UCS1P Input Board	
#	DATE	VER#	DESCRIPTION OF CHANGE
1	Oct 19, 2006	1V00	Added 14V zeners in parallel to R18 and R19
2	Apr 13, 2007		Updated ribbon connectors - new art not required
3	Apr 23, 2007		Swapped value of R22&R37 with R40&R41
4	May 9, 2007		R119 270k -> 200k (#6137)
5	JUN 25,2007	2V00	FIX AUTO INSERT PROGRAM
6	AUG 30,2007	2V01	PC#7280, REPLACE R116 #4864 2K7 WITH #4714 2K21
7			PC#7313, REMOVE DIODES D1 AND D6, #6486
8			
9			
10			
11			
12			
13			



Product UCS1P

UCS1P	PCB# M1306	Sheet 1 of 2
Date: Thu Aug 30, 2007	Rev: 2V01	
Filename: M1306-2V01sch.2002		



UCS1P
M1306
2V01

M13062V01

ETCH GUIDE

CLINCH ORIGIN

INSERT ORIGIN

LONG AXIS

LONG AXIS

SEE LAYOUT DOCUMENTATION





SEE LAYOUT DIAGRAM



PRODUCTION NOTES

- 1) C9 is hand inserted until new stock arrives. Part is fix
- 2) DO NOT STUFF D1 AND D6.

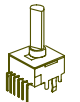
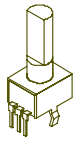
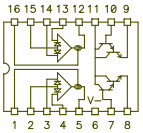
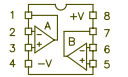
M1306 Database History			
MODEL(S):- UCS1P Input Board			
#	DATE	VER#	DESCRIPTION OF CHANGE
1	Oct 19, 2006	1V00	Added 14V zeners in parallel to R18 and R19
2	Apr 13, 2007	.	Updated ribbon connectors - new art not required
3	Apr 23, 2007	.	Swapped value of R22&R37 with R40&R41
4	May 9, 2007	.	R119 270k -> 200k (#6137)
5	JUN 25,2007	2V00	FIX AUTO INSERT PROGRAM
6	AUG 30,2007	2V01	PC#7280, REPLACE R116 #4864 2K7 WITH #4714 2K21
7	.	.	PC#7313, REMOCE DIODES D1 AND D6 ,#6486
8	D	V	N
9	D	V	N
10	D	V	N
11	D	V	N
12	D	V	N
13	D	V	N

M1306 PENDING CHANGES		
MODEL(S):- UCS1P Input Board		
#	PC#	PENDING CHANGE
1	PC	X
2	PC	X
3	PC	X
4	PC	X
5	PC	X
6	PC	X
7	PC	X
8	PC	X
9	PC	X
10	PC	X
11	PC	X
12	PC	X
13	PC	X

M1306 Drilling History			
MODEL(S):- UCS1P Input Board			
#	DATE	VER#	DESCRIPTION OF CHANGE
1	D	V	N
2	D	V	N
3	D	V	N
4	D	V	N
5	D	V	N
6	D	V	N
7	D	V	N
8	D	V	N
9	D	V	N
10	D	V	N
11	D	V	N
12	D	V	N
13	D	V	N

*PLACE IMPLEMENTED CHANGES INTO BOARD HISTORY

M1306 Potlist				
MODEL(S):- UCS1P Input Board				
REF	FUNCTION	PART#	KNOB	{NEW}
P1	LEVEL	4434	K	N
P2	BOOST	4412	K	N
P3	ROLL OF FREQ.	4438	K	N
R	F	P	K	N
R	F	P	K	N
R	F	P	K	N
R	F	P	K	N
R	F	P	K	N
R	F	P	K	N
R	F	P	K	N
R	F	P	K	N
R	F	P	K	N
R	F	P	K	N

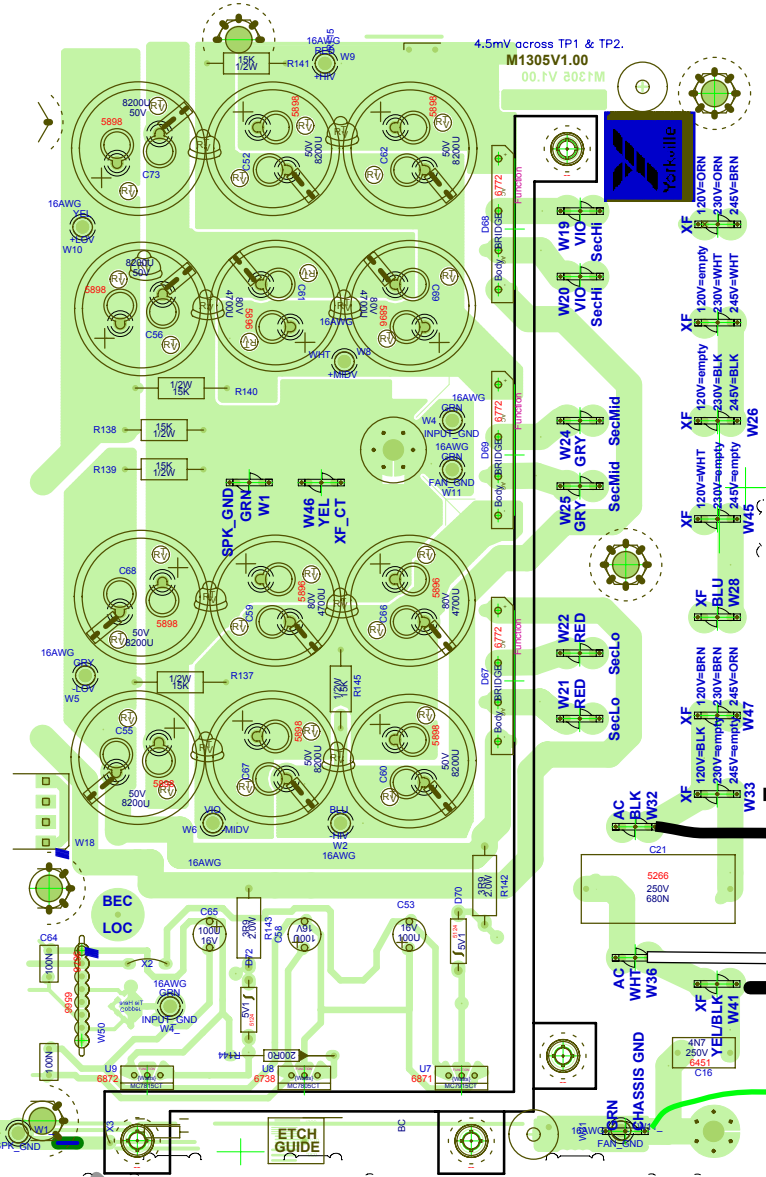


"STYLE_P32"

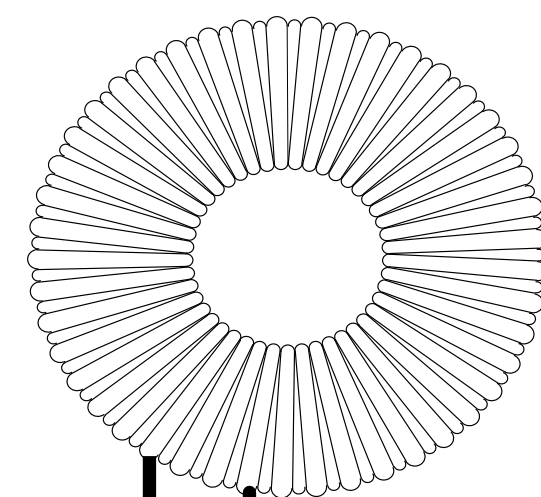
"STYLE_P34"



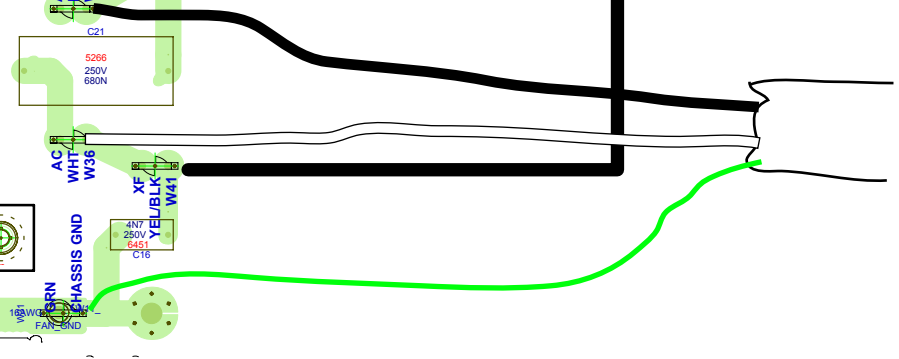
YS Type -(Company Name)



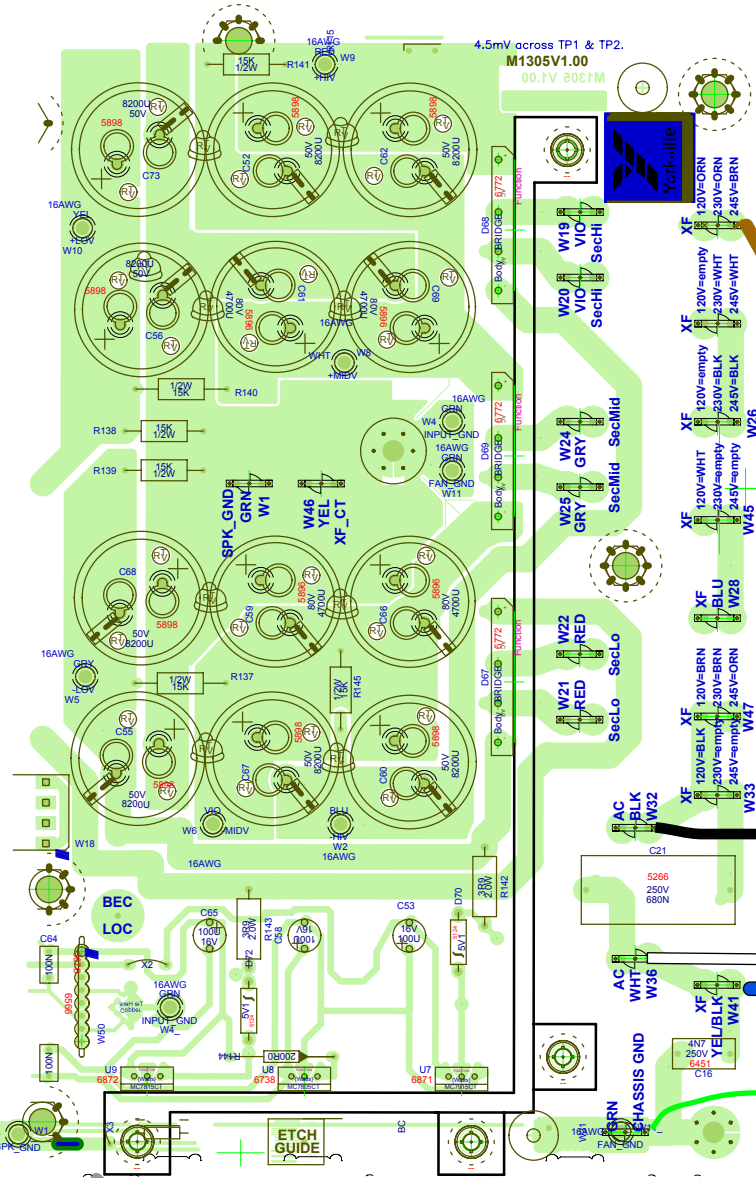
WIRED FOR 120V AC N.A



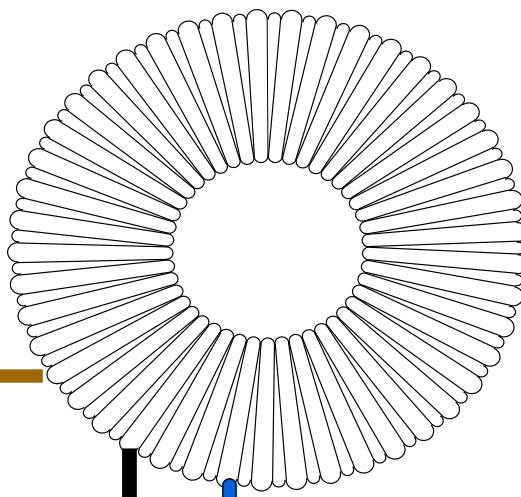
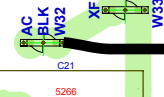
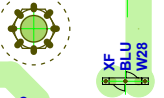
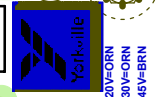
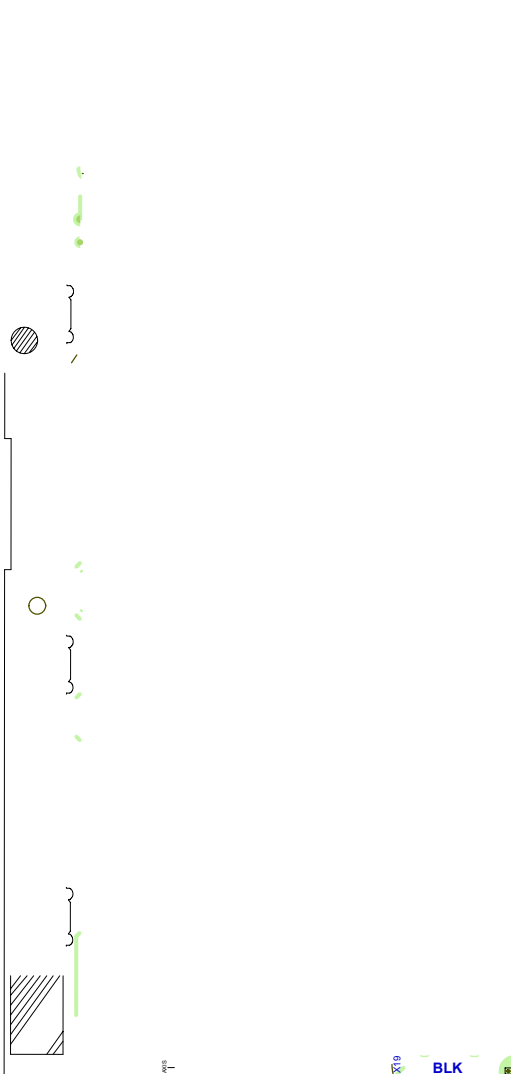
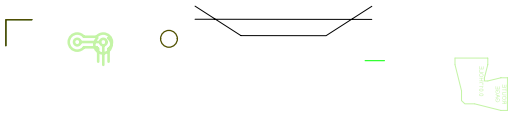
TAPE



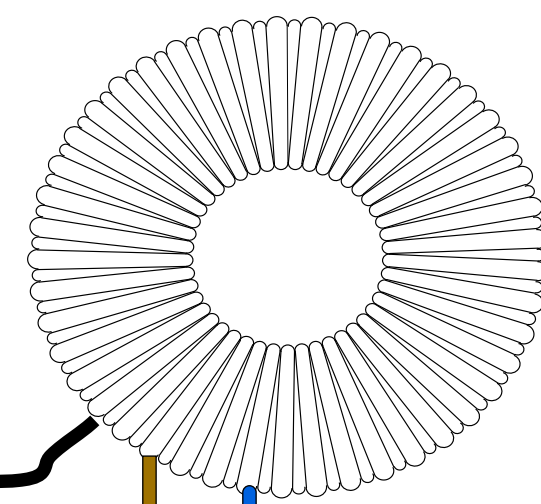
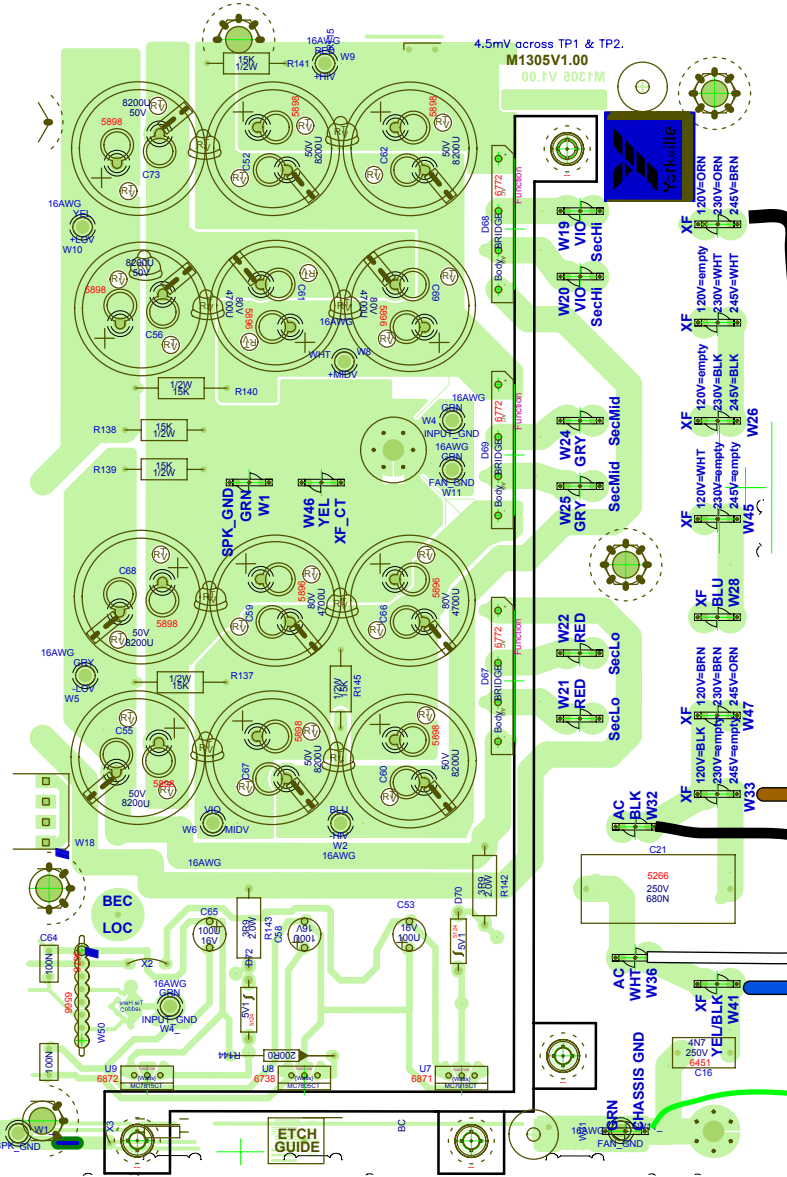
UCS1P
WIRED FOR 245V AC



NOTE: PRIM. VOLTAGE LABELS FOR TRANS. TABS
APPLY ONLY FOR UNIVERSAL XFMR



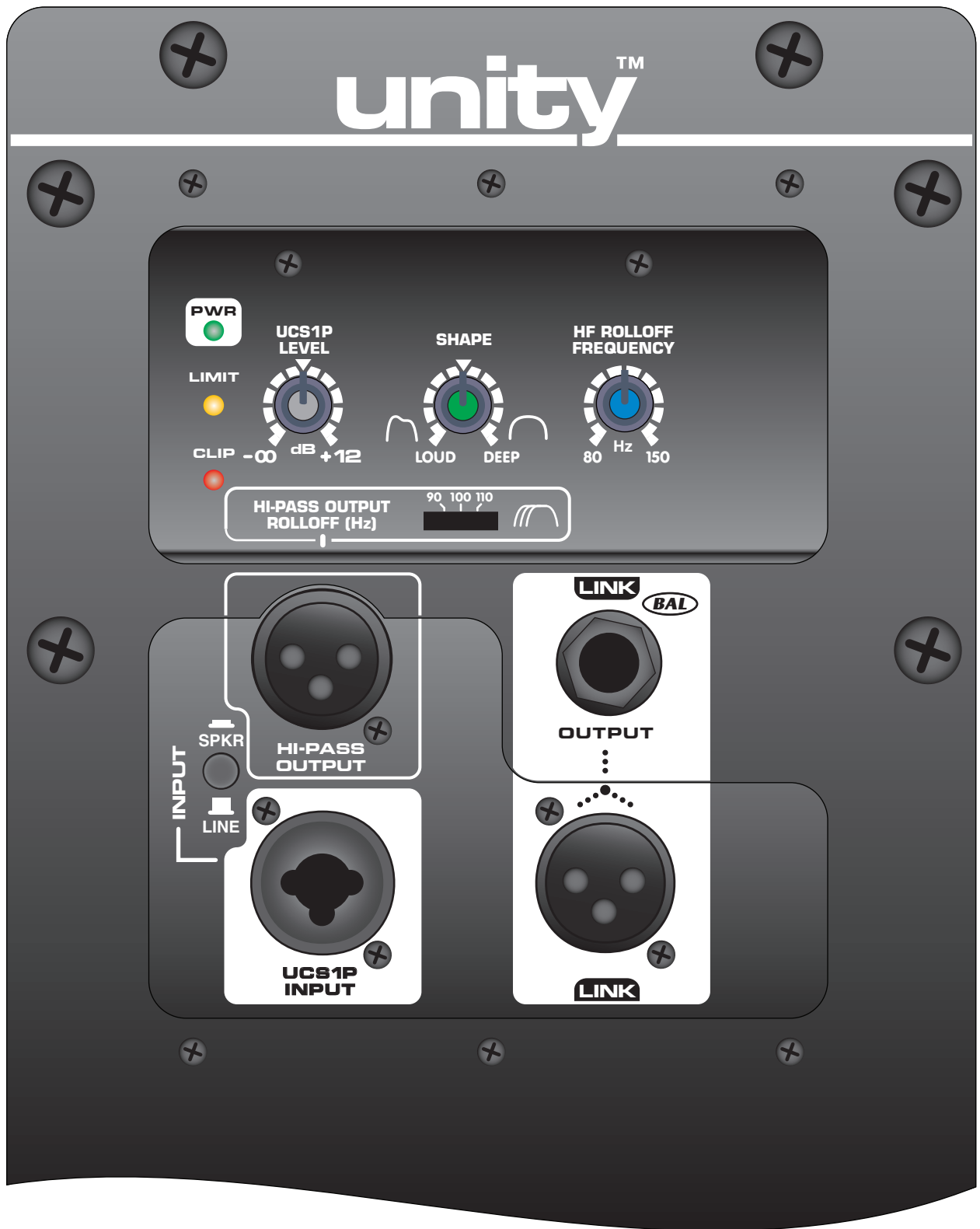
UCS1P
WIRED FOR 230V AC CE



NOTE: PRIM. VOLTAGE LABELS FOR TRANS. TABS
APPLY ONLY FOR UNIVERSAL TRANSF.



YSP Type -(Company Name)
S or Cobber



 **YS#9916 Gray Knob (qty: 1)**

 **YS#9917 Green Knob (qty: 1)**

 **YS#9918 Blue Knob (qty: 1)**