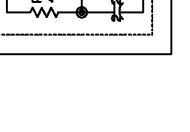
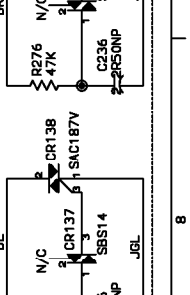
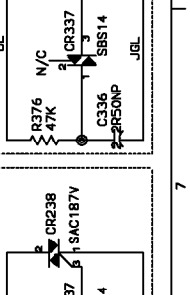
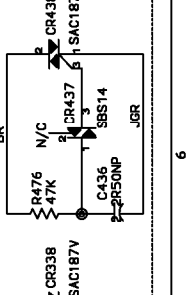
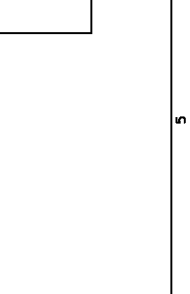
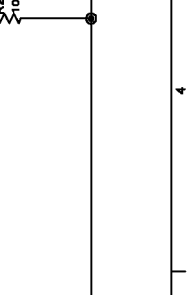
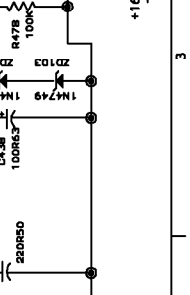
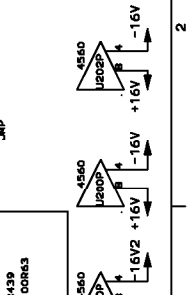


PEAVEY ELECTRONICS CORP.
 Meridian, Mississippi 39301
 TITLE: 400 WATT XR POWER AMP
 PROJECT: P950023B MRP: 9557420
 SIZE: NUMBER: (400SC)
 DATE: 15-FEB-99 SHEET 1 OF 2

FILE: 400S



XR1204 (99573032-dom. / -3042-exp.)

DO NOT insert JP502.

C238, R173, R174, U202, JP901 &

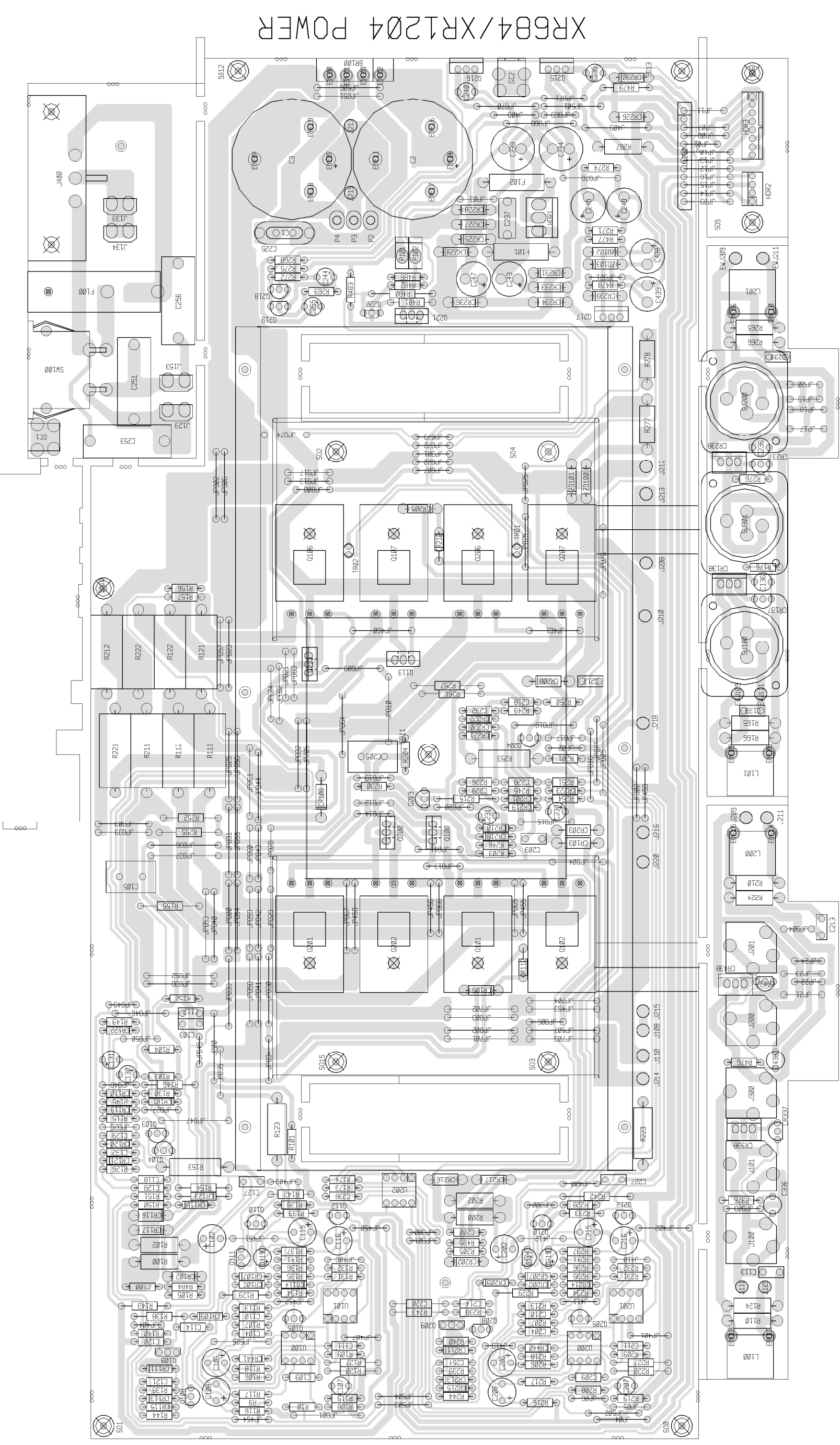
JP900, J300, J1200, C225, JP22 & JP23

For XR684 (Dom & Exp):

Insert for EXPORT ONLY:
(C253 & C256)

Insert for DOMESTIC ONLY:

DO NOT insert JP05.
JP21 & JP24



XR684/XR1204 POWER

BILL OF MATERIALS REPORT

BOARD NAME: 400SC POWER REPORT DATE: 16FEB99
 ASSEMBLY LEVEL NUMBER: 99573032/61
 PROJECT NUMBER: P9700142
 CBDS

PART PART DESCRIPTION AND
 ** QTY. NAME VALUE NUMBER DEVICE DESIGNATIONS *****

- 1 98873032 98873032 ECN19194 PCB
- 2 .0017 .0017 70340007 .0017MF---10%---50VDC---MON---T&R
 C121, C254
- 4 .015 .015 70340010 .015MF---10%---50VDC---T/C---T&R
 C129, C132, C229, C232
- 1 .01CD .01CD 70320248 .01MF---20%---1000VDC---CD--T&A
 C1
- 4 .1 .1 70340100 .1MF---+80-20%--50VDC---AXL---T&R
 C118, C128, C218, C228
- 10 .1SF .1SF 70330113 0.10 MFD 10% 100V STCK FILM T&A
 C103, C112, C113, C127, C133, C203,
 C212, C213, C227, C233
- 2 .22MY .22MY 70320080 .22 MFD +/-10% 100V MYLAR
 C105, C205
- 8 .33W5 .33W5 70250003 .33--5W--10%--WW--AXL
 R111, R112, R121, R122, R211, R212,
 R221, R222
- 1 .47MY .47MY 70320081 .47 MFD 100VDC MYLAR CAP
 C225
- 1 .47SF .47SF 70330111 0.47 MFD STAC FILM 5% CAP
 C237
- 3 .47X2 .47X2 70320271 .47MF-20%-275VAC-MP-R/W
 C251, C253, C256
- 2 1.5KW1 1.5KW1 70210007 1.5K--1W---5%---MO--T&R
 R100, R200
- 2 1.5SBPCB 1.5SBPCB 70901446 FUSE,1.5A--2AG--S/B--T&R
 F101, F102
- 4 1.82KP1 1.82KP1 70241078 1.82K-1/4W--1%---CF--T&R
 R106, R116, R206, R216
- 2 1000R35 1000R35 70320186 1000MF---20%---35VDC--EL--T&A
 C234, C239

9	100FP	100FP	70240096	100FP-1/4W--5%---FP--T&R
				R103, R115, R130, R149, R203, R215, R230, R249, R479
10	100K	100K	70240034	100K--1/4W--5%---CF--T&R
				R119, R150, R151, R219, R250, R251, R269, R271, R274, R478
4	100PF	100PF	70340054	100PF-----10%----50VDC----T/C----T&R
				C100, C120, C200, C220
2	100R63	100R63	70320264	100MF-----20%----63VDC---EL--T&A
				C438, C439
5	10K	10K	70240025	10K---1/4W--5%---CF--T&R
				R118, R131, R218, R231, R477
2	10KUF80V	10KUF80V	70330161	10,000mf @ 80V R/S Capacitor
				C2, C3
4	10PF	10PF	70340050	10PF-----5%-----T/C----T&R
				C104, C111, C204, C211
2	10R50L	10R50L	70320185	10MF-----20%----50VDC---LL--T&A
				C119, C219
1	12K	12K	70240057	12K---1/4W--5%---CF--T&R
				R480
2	13080	13080	70413080	LM3080N CUSTOM SELECTED
				U101, U201
2	13886	13886	70413886	SZ-13886-2 DUAL DIODE
				CR112, CR212
2	15	15	70240005	15---1/4W--5%---CF--T&R
				R9, R10
2	150	150	70240001	150---1/4W--5%---CF--T&R
				R128, R228
2	18	18	70240006	18---1/4W--5%---CF--T&R
				R140, R240
2	180FP	180FP	70240099	180 OHM FLAME PROOF RESISTOR
				R104, R204
4	1K	1K	70240017	1K---1/4W--5%---CF--T&R
				R108, R136, R208, R236
1	1M	1M	70240039	1M---1/4W--5%---CF--T&R
				R275

17 1N4003 1N4003 70464003 1N4003 200V SILICON DIODE
CR102, CR105, CR117, CR202, CR205,
CR217, CR225, CR226, CR227, CR228,
CR229, CR230, CR231, CR233, CR234,
CR236, CR239

32 1N4148 4148 70464148 1N4148 75V 10MA SILICON DIODE
CR101, CR106, CR107, CR109, CR110,
CR111, CR113, CR114, CR115, CR118,
CR119, CR120, CR121, CR122, CR123,
CR201, CR206, CR207, CR209, CR210,
CR211, CR213, CR214, CR215, CR218,
CR219, CR220, CR221, CR222, CR223,
CR440, CR441

2 1N4744 4744 70440102 SZG40102 15V 5% ZENER DIODE
ZD100, ZD101

2 1N4749 4749 70466164 1N4749ARL 24.5V 5% ZD T&R
ZD102, ZD103

4 1N5393 5393 70465393 1N5393-RL 200V, 1.5, 5% DIODE -T&R
CR103, CR108, CR203, CR208

1 2.2R50 2.2R50 70320180 2.2MF-----20%----50VDC---EL--T&A
C244

6 2.2R50NP 2.2R50NP 70320184 2.2MF-----20%----50VDC---NP--T&A
C107, C136, C207, C236, C336, C436

5 2.7K 2.7K 70240021 2.7K--1/4W--5%----CF--T&R
R117, R137, R217, R237, R483

4 2.7KW1 2.7KW1 70210016 2.7K--1W----5%----MO--T&R
R102, R202, R277, R278

2 220K 220K 70240036 220K--1/4W--5%----CF--T&R
R141, R241

4 220R50 220R50 70320187 220MF-----20%----50VDC---EL--T&A
C243, C245, C247, C249

5 22K 22K 70240029 22K---1/4W--5%----CF--T&R
R120, R173, R174, R220, R268

7 22R50 22R50 70320181 22MF-----20%----50VDC---EL--T&A
C130, C131, C230, C231, C235, C240, C255

9 22W1 22W1 70210001 22----1W----5%----MO--T&R
R110, R124, R165, R166, R210, R224,
R265, R266, R267

12 250STW 70901856 70901856 SPCR, 1/4,R(#4),.187 SW,AL
SO0, SO1, SO2, SO3, SO4, SO5, SO6,
SO10, SO11, SO12, SO13, SO15

4 2N3904 3904 70463904 3904/SPS7239 TO 92 NPN T&A
Q110, Q111, Q210, Q211

2 2N4249 4249 70464249 2N4249/690 30V TO-92 PNP T&A
Q112, Q212

2 2N5400 5400 70460761 761/2N5400 120V 10MA T0-92 PNP T&A
Q108, Q208

4 2SA1302D 2SA1302D 70458200 200V PLASTIC PNP POWER TRANSISTOR
Q106, Q107, Q206, Q207

2 2SA1837V 2SA1837V 70401837 PNP TRAN TO-220 230V 1A VERT
Q113, Q213

4 2SC3281D 2SC3281D 70468200 200V PLASTIC NPN POWER TRANSISTOR
Q101, Q102, Q201, Q202

3 2SC4793V 2SC4793V 70404793 NPN TRAN TO-220 230V 1A VERT
Q100, Q200, Q221

1 330 330 70240014 330---1/4W--5%---CF--T&R
R272

2 330KT 330KT 70240208 330K THERMISTOR
TR01, TR02

2 33K 33K 70240030 33K---1/4W--5%---CF--T&R
R109, R209

7 39PF 39PF 70340052 39PF-----50VDC----T/C----T&R
C109, C110, C114, C209, C210, C214, C238

4 3UH 3UH 70519939 3 UHY INDUCTOR
L100, L101, L200, L201

5 4.7FP 4.7FP 70240094 4.7FP-1/4W--10%---FP--T&R
R105, R205, R484, R485, R486

8 4.7K 4.7K 70240023 4.7K--1/4W--5%---CF--T&R
R139, R142, R146, R154, R239, R242,
R246, R254

2 4.7KW1 4.7KW1 70210006 4700--1W----5%---MO--T&R
R123, R223

1 4.99KP1 4.99KP1 70241060 4.99K-1/4W--1%---MF--T&R
R482

3 4560 4560 70414560 4560 DUAL OP AMP IC
U100, U200, U202

2 470 470 70240015 470---1/4W--5%---CF--T&R
 R129, R229

5 470FP 470FP 70240098 470--1/4W--5%---FP--T&R
 R126, R145, R226, R245, R481

4 47FP 47FP 70240090 47FP--1/4W--5%---FP--T&R
 R101, R143, R201, R243

14 47K 47K 70240031 47K---1/4W--5%---CF--T&R
 R107, R113, R133, R135, R138, R176,
 R207, R213, R233, R235, R238, R276,
 R376, R476

10 47V50 47V50 70320182 47MF-----20%---50VDC---LL--T&A
 C102, C106, C108, C115, C116, C202,
 C206, C208, C215, C216

1 4PHVL 4PHVL 73717015 4 PIN HEADER VERT. W/LOCK
 HDR2

2 5331V 5331V 70425331 SJE-5331 CASE-77 NPN VERTICAL
 Q109, Q209

2 6.8KW2 6.8KW2 70250052 6.8K---2W---5%---MF---T&R
 R153, R253

2 6531 6531 70466531 MPS-6531 TO92 NPN TRANS. T&A
 Q103, Q203

2 6533 6534 70466533 MPS-6533/34 TO-92 PNP TRANS T&A
 Q104, Q204

2 6534 6534 70466533 MPS-6533/34 TO-92 PNP TRANS T&A
 Q218, Q219

2 68 68 70240009 68---1/4W--5%---CF--T&R
 R127, R227

8 680 680 70240016 680---1/4W--5%---CF--T&R
 R144, R152, R155, R156, R157, R244,
 R252, R255

4 68K 68K 70240032 68K---1/4W--5%---CF--T&R
 R132, R134, R232, R234

3 71466258 71466258 71466258 PCB CONN, 4 POLE SPEAKON (NEUTRIK)
 SJ100, SJ200, SJ301

1 7815FVRT 7815FVER 70400318 7815 15V 1A POS TO-220 RG VERT MNT INS
 Q215

1 7915FVRT 7915FVER 70400319 7915 15V 1A NEG TO 220 RG VERT MNT INS

Q216

2 820 820 70240019 820---1/4W--5%---CF--T&R

R256, R257

1 8SRHDRL 73717010 73717010 8 PIN HEADER W/LOCK

HDR3

1 933 933 70400933 2SA933ASLN 40V, .1A, PNP, LOW NOISE T&A

Q220

2 CLIP1785 70901785 70901785 screw term, 6-32 - pcb mnt.

GC1, GC2

1 EP430U EP430 70400430 EP-430 1A TO-220 NPN TRAN

Q217

20 EYE090 73700219 73700219 EYELET .090-DRILL-HOLE .068-EYELET-HOLE

EYE00, EYE01, EYE02, EYE03, EYE04,
EYE05, EYE06, EYE07, EYE08, EYE09,
EYE10, EYE11, EYE12, EYE13, EYE14,
EYE15, EYE16, EYE17, EYE18, EYE19,

1 FMP FMP 73711811 M118-171 C.B. FEMALE MOLEX PIN

P3

1 FUSERA 70901429 70901429 EXT. FUSEHOLDER, PC MT

F100

5 HIDMI 71466215 71466215 2 TIP HID JACK INSU W/SPD

J100, J101, J200, J201, J300

1 IECPCB 70901257 70901257 IEC POWER INLET R/A PCB MT.

J400

2 J111 J111 70460111 J-111 35V TO-92 NFET LOW T&A

Q105, Q205

6 J325 J 70600005 22GA JUMPER WIRES T&R

JP300, JP301, JP302, JP303, JP900,
JP904,

105 J4 J 70600005 22GA JUMPER WIRES T&R

J408, J409, J410, J411, J412, J413,
JP400, JP401, JP402, JP403, JP404,
JP406, JP407, JP450, JP451, JP452,
JP453, JP454, JP455, JP456, JP458,
JP459, JP460, JP461, JP804, JP805,
JP806, JP807, JP808, JP809, JP810,
JP811, JP812, JP813, JP814, JP815,
JP816, JP817, JP818, JP819, JP820,
JP821, JP822, JP823, JP824, JP825,
JP826, JP827, JP828, JP829, JP830,
JP831, JP832, JP833, JP834, JP835,
JP836, JP837, JP838, JP839, JP840,
JP841, JP842, JP843, JP844, JP845,
JP846, JP847, JP848, JP849, JP850,

JP851, JP852, JP853, JP854, JP855,
JP856, JP857, JP858, JP859, JP860,
JP861, JP862, JP863, JP864, JP865,
JP866, JP867, JP868, JP869, JP870,
JP871, JP872, JP873, JP874, JP875,
JP876, JP877, JP878, JP901,
JP909, JP913, JP917, JP921, JP925,

7 J5 J 70600005 22GA JUMPER WIRES T&R
JP501, JP502, JP503, JP504,
JP505, JP506, JP507

2 J6 J 70600005 22GA JUMPER WIRES T&R
JP902, JP906,

5 J7 J 70600005 22GA JUMPER WIRES T&R
JP701, JP702, JP703, JP704,
JP705,

4 J8 J 70600005 22GA JUMPER WIRES T&R
JP800, JP801, JP802, JP803

25 JMP JMP 70600005 22 GA. JUMPER WIRE T&R
JP00, JP01, JP02, JP03, JP04, JP05,
JP06, JP07, JP08, JP09, JP10, JP11,
JP12, JP13, JP14, JP15, JP16, JP17,
JP18, JP19, JP20, JP21, JP22, JP23, JP24

1 KBU6J 70400605 70400605 6A, 600V, INLINE DIODE BRIDGE RECTIFIER
BR100

2 MMP MMP 73711812 R93-12 PN C.B. MALE MOLEX PIN
P2, P4

2 MR812 MR812 70404933 MR812 FAST RECOVERY DIODE
CR116, CR216

1 PCMTRASW PCMTRASW 71322377 PC MOUNT PIGHT ANGLE POWER SWITCH
SW100

4 SAC187V SAC187 70400187 SAC187 200V TO220 TRIAC
CR138, CR238, CR338, CR438

4 SBS14 SBS14 70460014 SBS14 8V T0-92 BI-DIRECTIOAL SWITCH T&A
CR137, CR237, CR337, CR437

2 SPD 73716194 73716194 .250 PC MNT SPADE .093 PCB
J133, J134

2 SPDU 73716194 73716194 .250 PC MNT SPADE .093 PCB
J123, J153

2 SPX1U SPX1U 73717003 1 STAKE PIN
P101, P102

1 SPX3 SPX3 XXXXSPX3 3 EACH OF STAKE PINS

HDR1

1 TCONN12 73716722 73716722 12C-WTB-HDR-SHRD-.098"-TIN

J1200

4 WJ8BL6 WJ8BL6 91090172 BL-18G-6"-CPT-CPT

J108, J109, J208, J211

4 WJ8YL6 WJ8YL6 91090173 Y-18G-6"-CPT-CPT

J110, J111, J209, J210

13 WJX WJX XXXXXXXXX XXXXXXXXX

EWJ109, EWJ111, EWJ209, EWJ211, J212,
J213, J214, J215, J216, J217, J218,
J219, J220

* END OF BILL OF MATERIALS REPORT *
