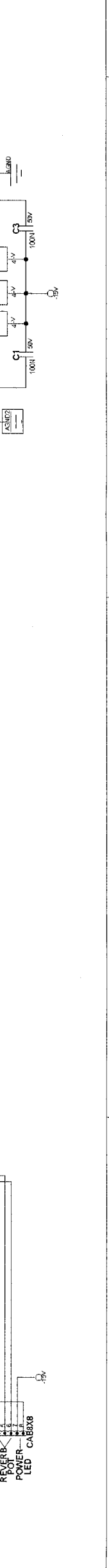
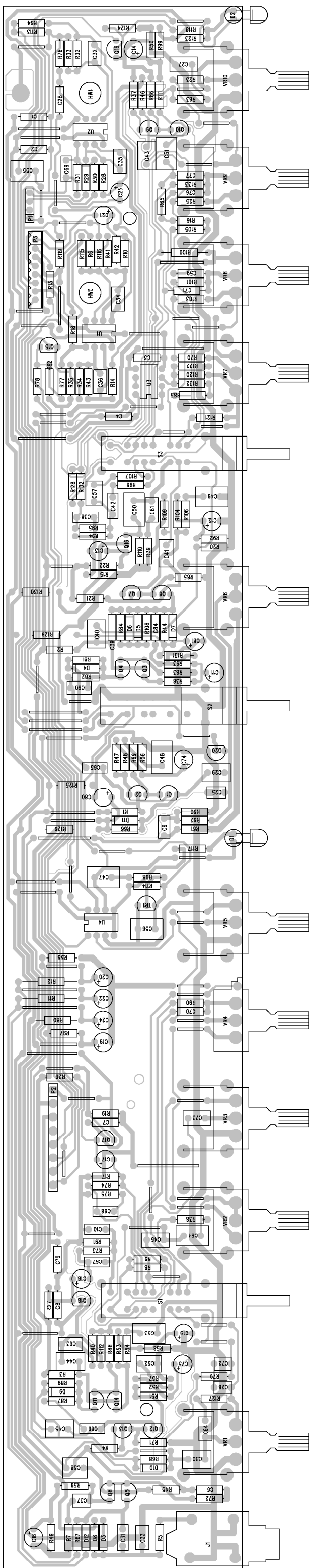


Note: All thru hole Resistors are 1/4 Watt unless otherwise indicated.  
 All SMT 1206 Resistors are 1/10 Watt.  
 All SMT 0805 Resistors are 1/10 Watt.  
 Note Capacitor Values are indicated as Follows:  
 val P = pF (picoFarads) val \* 10 exp-12  
 val N = nF (nanoFarads) val \* 10 exp-9 (1N=1000pF, 100N=0.1uF)  
 val U = uF (microFarads) val \* 10 exp-6





BILL OF MATERIAL REPORT

-----

REPORT DATE/TIME: 4/21/2003 3:20:43 PM

BOARD NAME: SUPREME XL PREAMP      ASSEMBLY LEVEL NUMBER: 99060260

PROJECT NUMBER: P0200090      DESIGNER: ELC

Qty.	Part #	Description	Reference Designators
--			
1	70240008	47      1/4W 5% CF AXL	R98
1	70240009	68      1/4W 5% CF AXL	R6
3	70240010	100     1/4W 5% CF AXL	R36 R52 R130
2	70240016	680     1/4W 5% CF AXL	R104 R123
5	70240017	1K      1/4W 5% CF AXL	R11 R12 R13 R14 R117
10	70240018	1500    1/4W 5% CF AXL	R47 R48 R49 R51 R53 R54 R55 R107 R125 R131
2	70240020	2200    1/4W 5% CF AXL	R106 R124
4	70240022	3300    1/4W 5% CF AXL	R56 R57 R58 R75
4	70240023	4700    1/4W 5% CF AXL	R93 R94 R95 R97
1	70240024	6800    1/4W 5% CF AXL	R113
13	70240025	10K     1/4W 5% CF AXL	R22 R23 R25 R26 R27 R29 R30 R32 R33 R34 R35 R42 R74
4	70240026	56K     1/4W 5% CF AXL	R60 R61 R79 R122
2	70240027	15K     1/4W 5% CF AXL	R96 R99
2	70240028	18K     1/4W 5% CF AXL	R5 R63
3	70240029	22K     1/4W 5% CF AXL	R41 R43 R118
2	70240030	33K     1/4W 5% CF AXL	R62 R64
6	70240031	47K     1/4W 5% CF AXL	R28 R31 R91 R100

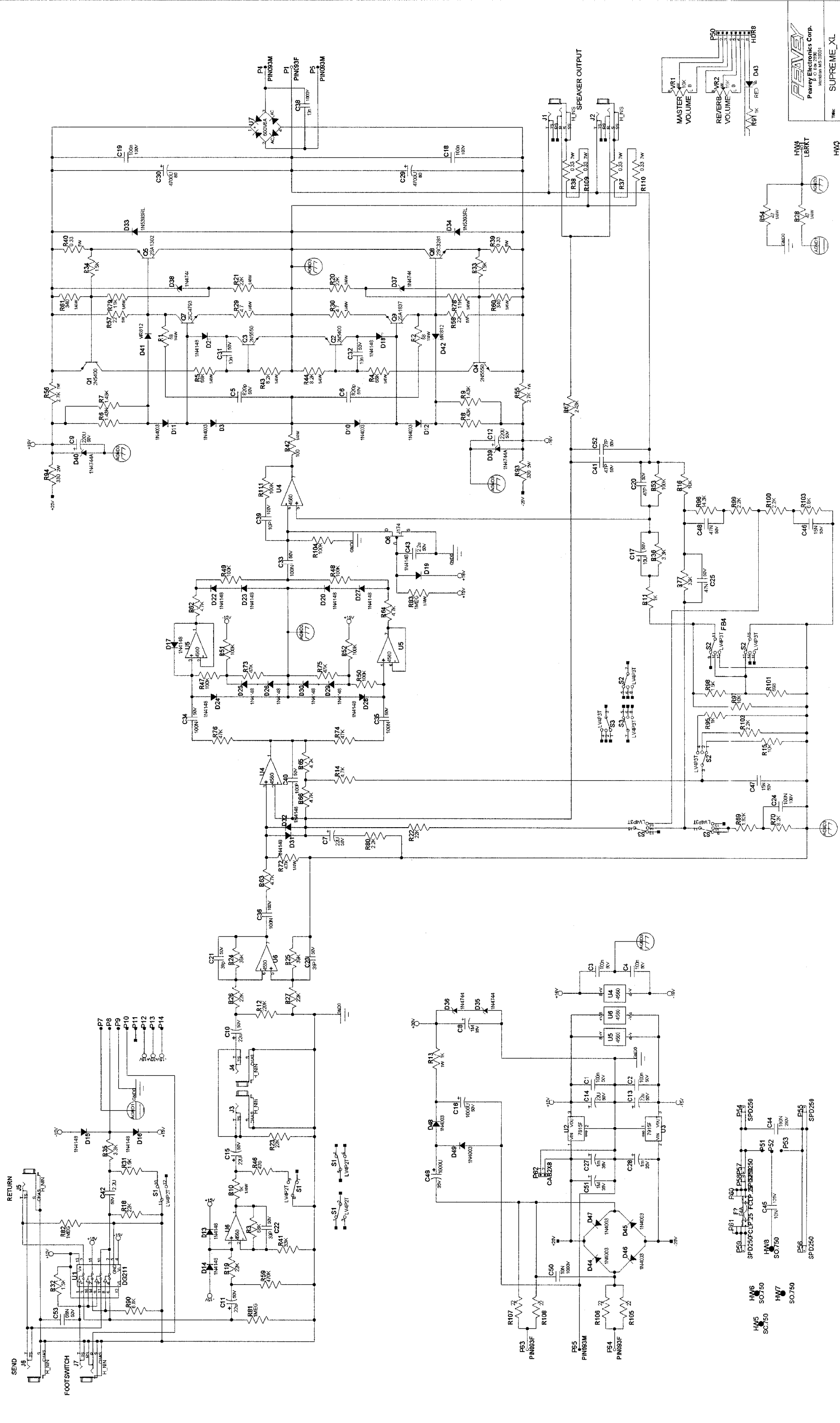
						R101 R128
4	70240032	68K	1/4W	5%	CF AXL	R7 R8 R9 R10
1	70240033	82K	1/4W	5%	CF AXL	R44
10	70240034	100K	1/4W	5%	CF AXL	R69 R70 R71 R72 R73 R76 R77 R78 R102 R133
1	70240035	150K	1/4W	5%	CF AXL	R105
4	70240036	220K	1/4W	5%	CF AXL	R15 R16 R17 R18
11	70240038	470K	1/4W	5%	CF AXL	R81 R82 R83 R84 R85 R86 R87 R88 R89 R90 R132
6	70240039	1M	1/4W	5%	CF AXL	R108 R109 R110 R111 R112 R114
2	70240040	2.2M	1/4W	5%	CF AXL	R19 R20
2	70240048	39K	1/4W	5%	CF AXL	R38 R103
1	70240052	37.4K	1/4W	1%	MF AXL	R45
2	70240057	12K	1/4W	5%	CF AXL	R80 R121
1	70240061	1.3K	1/4W	5%	CF AXL	R92
2	70240066	180K	1/4W	5%	CF AXL	R39 R40
1	70240090	47	1/4W	5%	FP AXL	R119
1	70240095	10	1/4W	5%	FP AXL	R115
1	70240100	22	1/4W	5%	FR AXL	R116
2	70240151	100K	1/4W	1%	MF AXL	R46 R120
2	70241009	14.3K	1/4W	1%	MF AXL	R126 R129
1	70241034	121K	1/4W	1%	MF AXL	R127
4	70241035	150K	1/4W	1%	MF AXL	R1 R2 R3 R4
3	70241037	243K	1/4W	1%	MF AXL	R66 R67 R68
1	70241070	68.1K	1/4W	1%	MF AXL	R21
1	70241071	5.23K	1/4W	1%	MF AXL	R59
1	70241078	1.82K	1/4W	1%	MF AXL	R50

1	70241093	3.9K	1/4W	5%	CF	AXL		R37
1	70241094	240K	1/4W	5%	CF	AXL		R65
2	70320180	2.2UF	50V	20%	EL	RAD		C74 C75
16	70320181	22UF	50V	20%	EL	RAD		C11 C12 C13 C14 C15 C16 C17 C18 C19 C20 C21 C22 C23 C24 C80 C81
3	70320269	100PF	100V	5%	NPO	RAD		C33 C34 C36
1	70330113	0.1UF	100V	10%	PPS	RAD		C31
3	70330116	4700PF	50V	5%	PE	RAD		C9 C40 C41
1	70330117	6800PF	50V	5%	PE	RAD		C37
3	70330118	470PF	50V	5%	PE	RAD		C60 C61 C63
2	70330120	1500PF	50V	5%	PE	RAD		C25 C26
1	70330125	0.027UF	50V	5%	PE	RAD		C46
2	70330128	0.22UF	50V	5%	PE	RAD		C29 C30
9	70330129	0.1UF	50V	5%	PE	RAD		C47 C48 C49 C50 C51 C53 C54 C55 C56
3	70330132	820PF	50V	5%	PE	RAD		C32 C35 C64
2	70330133	0.12UF	50V	5%	PE	RAD		C52 C57
3	70330134	0.022UF	50V	5%	PE	RAD		C27 C58 C73
3	70330136	0.047UF	50V	5%	PE	RAD		C43 C44 C45
5	70330155	0.01UF	50V	5%	PE	RAD		C10 C38 C42 C68 C72
4	70330156	1000PF	50V	5%	PE	RAD		C65 C66 C67 C69
1	70340000	1000PF	50V	10%	NPO	AXL		C59
2	70340004	2200PF	50V	10%	X7R	AXL		C71 C84
1	70340010	0.015UF	50V	10%	X7R	AXL		C28
1	70340017	0.047UF	50V	10%	X7R	AXL		C39
1	70340052	39PF	50V	5%	NPO	AXL		C82

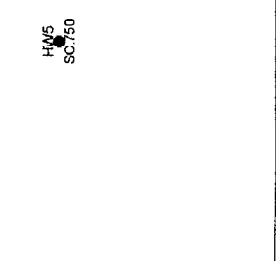
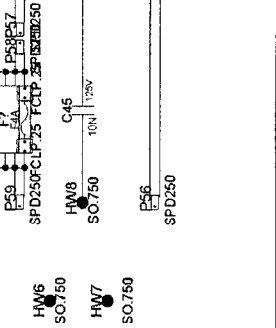
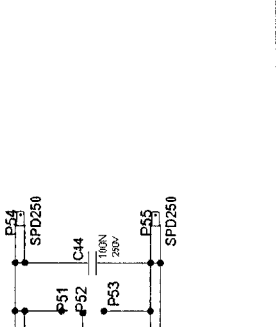
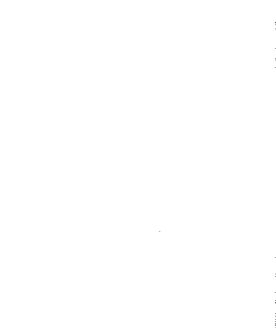
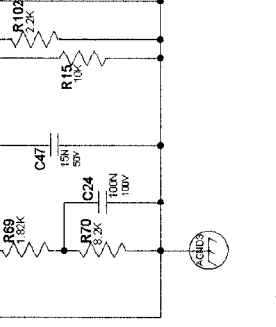
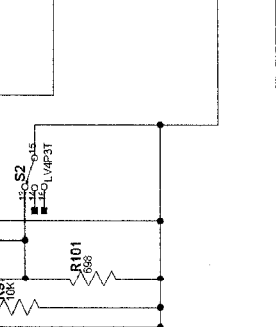
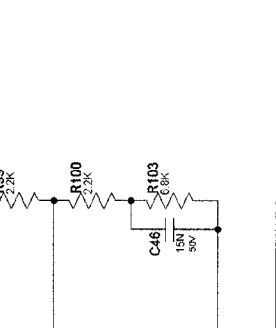
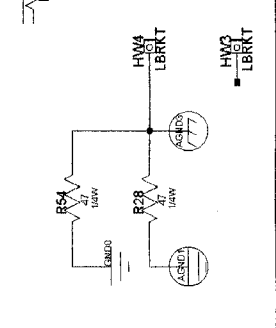
3	70340054	100PF	50V 10% NPO	AXL	C76 C77 C83
1	70340057	270PF	50V 10% NPO	AXL	C70
8	70340100	0.1UF	50V 80-20%	Z5U AXL	C1 C2 C3 C4 C6 C7 C8 C79
3	70400933	2SA933ASLN	PNP	LN RAD	Q16 Q17 Q18
14	70401740	2SC1740SLN	NPN	LN RAD	Q1 Q2 Q3 Q4 Q5 Q6 Q7 Q8 Q9 Q10 Q11 Q12 Q13 Q14
3	70414560	4560	DUAL	OPAMP DIP8	U1 U2 U3
1	70420419	DG419	SPDT	ANALOG SW DIP	U4
1	70450053	RED T1	LED	W/STOP LEAD	D2
1	70450054	GRN T1	LED	W/STOP LEAD	D1
1	70460097	MAC97-6	TRIAC	TO-92 T&A	TR1
2	70460174	J174	JFET	P 30V TO92 RAD	Q15 Q20
1	70463904	3904/SPS7239	TO92	NPN RAD	Q19
10	70464148	1N4148	75V	10MA DIODE	D3 D4 D5 D6 D7 D8 D9 D10 D11 D12
1	70600018	8C .156	STRP	SRCON 5"	P2
1	70600071	4C 2.5MM	STRP	SPOX 4"	P1
1	70600571	8C 2.5MM	WPCB	JST-EHR 8"	P3
1	70900936	STND .750	T4-40,	SW,NB,ST	HW3
2	70901837	STND .591	T4-40,	SW,AL	HW4 HW5
2	70901875	STND .750	T4-40,	SW,AL,ST	HW1 HW2
1	71190511	50KB	SNGL	16MM HOR	VR10
4	71190515	250KB	SNGL	16MM HOR	VR5 VR7 VR8 VR9
1	71190518	20KB	SNGL	16MM HOR	VR3
1	71190522	1M5A	SNGL	16MM HOR	VR2
1	71190547	250K10A	SNGL	16MM HOR	VR1
1	71190560	250K 5%A	SNGL	16MM HOR	VR6

1	71190561	300K25AM SNGL CT 17MM HOR	VR4
1	71322395	SWITCH 4P2T RA LEVER PC H	S2
2	71322396	SWITCH 4P3T RA LEVER PC H	S1 S3
1	71466322	JACK, MONO R/A 1/4" 6.5MM NINS	J1
66	JUMPER	????????????????????????????????	JMP1 JMP2 JMP3 JMP4 JMP5 JMP6 JMP7 JMP8 JMP9 JMP10 JMP11 JMP12 JMP13 JMP14 JMP15 JMP16 JMP17 JMP18 JMP19 JMP20 JMP21 JMP22 JMP23 JMP24 JMP25 JMP26 JMP27 JMP28 JMP29 JMP30 JMP31 JMP32 JMP33 JMP34 JMP35 JMP36 JMP37 JMP38 JMP40 JMP41 JMP42 JMP43 JMP44 JMP46 JMP48 JMP49 JMP50 JMP51 JMP52 JMP53 JMP54 JMP55 JMP56 JMP57 JMP58 JMP59 JMP60 JMP61 JMP62 JMP63 JMP64 JMP65 JMP66 JMP67 JMP68 JMP69

-----  
END OF BILL OF MATERIAL REPORT  
-----

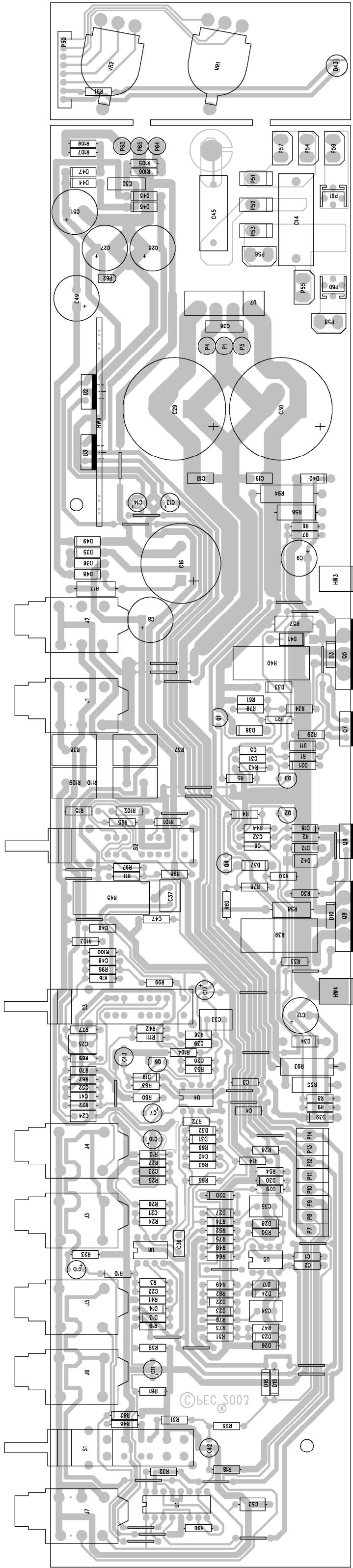


SUPREME\_XL  
 Peavey Electronics Corp.  
 MERRIMACK, MASS. 01840  
 THE SHEET TITLE: SUPREME\_XL  
 SHEET NO. 1 OF 1  
 DATE: 4-16-2002 14:10



COMPONENTS:  
 U1: LM333  
 U2: LM317  
 U3: LM4850  
 U4: LM4850  
 U5: LM4850  
 R1-R100: Various resistors  
 C1-C50: Various capacitors  
 D1-D30: Various diodes  
 VR1: Potentiometer  
 VR2: Potentiometer  
 J5: 1.8V BATTERY  
 J6: SEND  
 J7: FOOTSWITCH  
 P50: Multi-pin connector





BILL OF MATERIAL REPORT

REPORT DATE/TIME: 4/16/2003 9:50:30 AM

BOARD NAME: SUPREME XL POWER AMP ASSEMBLY LEVEL NUMBER: 99060220

PROJECT NUMBER: P0200090 DESIGNER: JTH

Qty.	Part #	Description	Reference Designators
1	70210000	1K 1W 5% MO AXL	R13
2	70210001	22 1W 5% MO AXL	R57 R58
2	70210016	2700 1W 10% MO AXL	R55 R56
2	70240009	68 1/4W 5% CF AXL	R1 R2
1	70240015	470 1/4W 5% CF AXL	R46
4	70240017	1K 1/4W 5% CF AXL	R10 R11 R91 R95
5	70240018	1500 1/4W 5% CF AXL R98	R31 R32 R33 R34
4	70240020	2200 1/4W 5% CF AXL	R80 R99 R100 R102
2	70240022	3300 1/4W 5% CF AXL	R35 R36
6	70240023	4700 1/4W 5% CF AXL R65 R66	R14 R62 R63 R64
2	70240024	6800 1/4W 5% CF AXL	R90 R103
3	70240025	10K 1/4W 5% CF AXL	R15 R16 R97
8	70240029	22K 1/4W 5% CF AXL R22 R23 R26 R27	R18 R19 R20 R21
2	70240030	33K 1/4W 5% CF AXL	R41 R77
5	70240031	47K 1/4W 5% CF AXL R76	R72 R73 R74 R75
3	70240032	68K 1/4W 5% CF AXL	R3 R4 R5
8	70240034	100K 1/4W 5% CF AXL R51 R52 R53 R104	R47 R48 R49 R50
1	70240036	220K 1/4W 5% CF AXL	R12
1	70240038	470K 1/4W 5% CF AXL	R59
3	70240039	1M 1/4W 5% CF AXL	R81 R82 R83
2	70240048	39K 1/4W 5% CF AXL	R24 R25
3	70240049	8.2K 1/4W 5% CF AXL	R43 R44 R70
1	70240055	2.43K 1/4W 1% MF AXL	R67
2	70240069	11K 1/4W 5% CF AXL	R78 R79

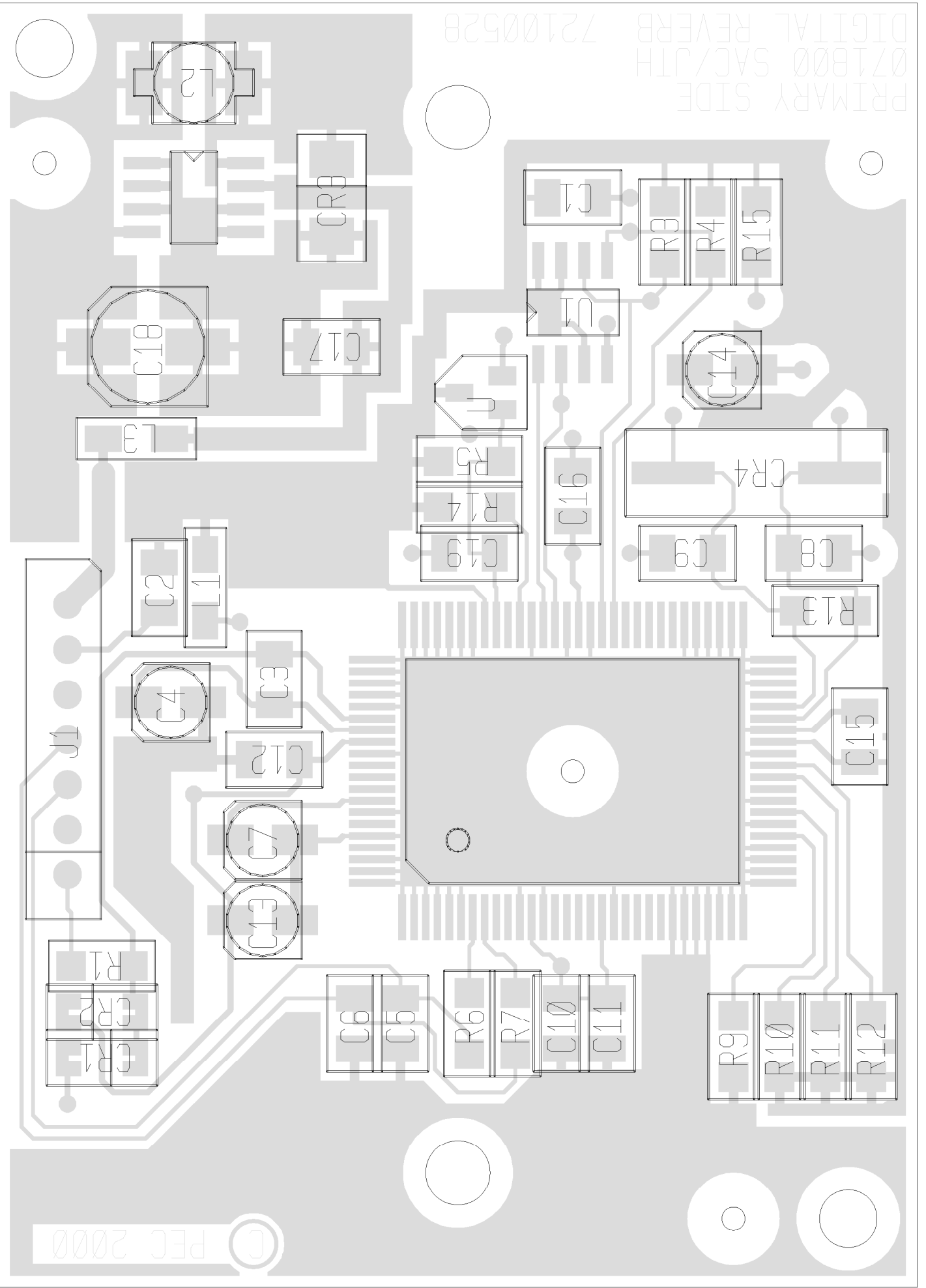
1	70240086	698	1/4W	1% MF	AXL	R101
2	70240090	47	1/4W	5% FP	AXL	R28 R54
2	70240094	4.7	1/4W	10% FP	AXL	R29 R30
4	70240100	22	1/4W	5% FR	AXL	R105 R106 R107 R108
1	70240151	100K	1/4W	1% MF	AXL	R111
1	70241009	14.3K	1/4W	1% MF	AXL	R96
2	70241011	340	1/4W	1% MF	AXL	R60 R61
4	70241039	1.43K	1/4W	1% MF	AXL	R6 R7 R8 R9
1	70241075	100	1/4W	1% MF	AXL	R42
1	70241078	1.82K	1/4W	1% MF	AXL	R69
2	70250003	0.33	5W	10% WW	AXLH	R39 R40
2	70250074	330	RSS2W	5% MO	AXL	R93 R94
4	70250163	.33	7W	5% WW	RADH	R37 R38 R109 R110
1	70320104	0.01UF	125V-20%	"X"	RADH	C45
1	70320147	1000UF	30-20%	50V EL	R/S	C16
6	70320181	22UF	50V 20% EL	RAD		C7 C10 C11 C13 C14 C15
2	70320184	2.2UF	50V 20% ELN	RAD		C42 C43
1	70320185	10UF	50V 20% ELL	RAD		C17
5	70320186	1000UF	35V 20% EL	RAD		C8 C27 C28 C49 C51
2	70320187	220UF	50V 20% EL	RAD		C9 C12
2	70320248	0.01UF	1000V 80-20%	Z5U	RAD	C38 C50
1	70320298	0.1UF	250V 20%	"X"	RADH	C44
2	70320440	4700UF	80V 20% EL	SNPHT3		C29 C30
4	70330113	0.1UF	100V 10% PPS	RAD		C18 C19 C24 C36
3	70330129	0.1UF	50V 5% PE	RAD		C33 C34 C35
1	70330136	0.047UF	50V 5% PE	RAD		C25
2	70340010	0.015UF	50V 10% X7R	AXL		C46 C47
2	70340011	0.01UF	50V 10% X7R	AXL		C31 C32
1	70340016	0.047UF	50V 80-20%	Z5U	AXL	C48
1	70340018	0.068UF	50V 10% X7R	AXL		C53
1	70340050	10PF	100V 5% NPO	AXL		C39
3	70340052	39PF	50V 5% NPO	AXL		C21 C22 C23

1	70340054	100PF 50V 10% NPO AXL	C40
2	70340062	820PF 50V 10% NPO AXL	C5 C6
1	70340066	27PF 50V 10% NPO AXL	C52
2	70340067	47PF 50V 10% NPO AXL	C20 C41
4	70340100	0.1UF 50V 80-20% Z5U AXL	C1 C2 C3 C4
1	70400318	7815F +15V INS TO-220F HOR	U2
1	70400319	7915 -15V INS TO-220F HOR	U3
1	70400605	BR RECT INLINE 600V 6A	U7
1	70401837	2SA1837 PNP TO-220 230V	Q9
1	70404793	2SC4793 NPN TO-220 230V	Q7
2	70404933	MR812 FAST RECOVERY DIODE	D41 D42
3	70414560	4560 DUAL OPAMP DIP8	U4 U5 U6
1	70420211	DG211 4-ANALOG SW DIP	U1
4	70440102	SZG40102 15V 5% ZENER	D35 D36 D37 D38
1	70450068	RED T1 3/4 LED S-BRT BULK	D43
1	70458200	2SA1302 200V PNP TO-247AC	Q5
1	70460174	J174 JFET P 30V TO92 RAD	Q6
2	70460761	2N5400 PNP 120V 10MA TO92	Q1 Q2
10	70464003	1N4003 200V 1A SI DIODE D44 D45 D46 D47 D48 D49	D3 D10 D11 D12 D44 D45 D46 D47 D48 D49
20	70464148	1N4148 75V 10MA DIODE D17 D18 D19 D20 D21 D22 D23 D24 D25 D26 D27 D28 D29 D30 D31 D32	D13 D14 D15 D16 D17 D18 D19 D20 D21 D22 D23 D24 D25 D26 D27 D28 D29 D30 D31 D32
2	70464744	1N4744A 15V 1W 5% ZENER	D39 D40
2	70465393	1N5393-RL 1.5A RECT DIODE	D33 D34
2	70465550	2N5550 TO92 NPN T&A	Q3 Q4
1	70468200	2SC3281 200V NPN POWER	Q8
1	70600184	2C 2.5MM STRP SPOX 8"	P62
1	70900936	STND .750 T4-40,SW,NB,ST	HW8
2	70901183	FUSECLIP, PC MT RAD	P60 P61
3	70901875	STND .750 T4-40,SW,AL,ST	HW5 HW6 HW7
2	71190336	10KB SNGL 16MM SPD	VR1 VR2
1	71322395	SWITCH 4P2T RA LEVER PC H	S1

2	71322396	SWITCH 4P3T RA LEVER PC H	S2 S3
2	71466223	JACK, STEREO R/A 1/4" 6.5MM	J1 J2
4	71466322	JACK, MONO R/A 1/4" 6.5MM NINS	J3 J4 J5 J6
1	71466323	JACK, STEREO R/A 1/4" 6.5MM NINS	J7
2	71500238	????????????????????????????	HW3 HW4
3	73711811	PIN-F .093 MOLEX PC-MNT	P1 P63 P64
3	73711812	PIN-M .093 MOLEX PC-MNT	P4 P5 P65
6	73716194	SPADE .250 PC MNT .093 P58 P59	P54 P55 P56 P57
11	73717003	1 STAKE PIN .045 .625 TIN P11 P12 P13 P14 P51 P52 P53	P7 P8 P9 P10
1	73717194	8 HDR V JST-EHR 2.5MM TIN	P50
1	98002978	DUAL V REG HEATSINK VRT	HW9
35	JUMPER	???????????????????????????? JMP5 JMP6 JMP7 JMP8 JMP9 JMP10 JMP11 JMP12 JMP13 JMP14 JMP15 JMP16 JMP17 JMP18 JMP19 JMP20 JMP21 JMP22 JMP23 JMP24 JMP25 JMP26 JMP27 JMP28 JMP29 JMP30 JMP31 JMP32 JMP33 JMP34 JMP36	JMP1 JMP2 JMP3 JMP4

-----  
 END OF BILL OF MATERIAL REPORT  
 -----





PRIMARY SIDE  
Ø71800 SAC/JTH  
DIGITAL REVERB  
72100528

© PEC 2000

BILL OF MATERIALS REPORT

BOARD NAME: DIGITREVERB REPORT DATE: 24JUL00  
 ASSEMBLY LEVEL NUMBER: 99053090 DESIGNER: SAULARK/JAMES HUGHES  
 PROJECT NUMBER: P9800155

CBDS PART DESCRIPTION AND  
 \*\*QTY. NAME VALUE NUMBER DEV. CE DESIGNATIONS \*\*\*\*\*  
 \*\*\*\*\*

1 72100528 72100528 FCB  
 3 .001S .001 70300036 .001MF X7R 50V 10% SMT 1206  
 C3, C5, C6  
 8 .047S .047 70300027 .047----SURFACE MNT--1206 PACK  
 C1, C2, C10, C11, C12, C15, C16, C19  
 1 .1S .1 70300035 .1MF Z5U 50V 20% SMT 1206  
 C17  
 1 10BQ040 10BQ040 70418219 10BQ040 SCHOTTKY DIODE, 40V,1A,SMT  
 C18  
 6 10KS 10K 70200028 10K--1/8W--5%---SMT  
 R6, R7, R9, R10, R11, R12  
 3 10V16S 70300080 70300080 10MFD--+/--20%--16VDC--EL--SMT  
 C4, C13, C14  
 1 1MS 1M 70200036 1M--1/8W--5%---SMT  
 R13  
 2 1N4148S 4148 70418226 1N4148 (LL54) DIODE SMT  
 CR1, CR2  
 1 1V50S 70300081 70300081 1MFD--+/--20%--50VDC--EL--SMT  
 C7  
 1 220UHS 220UH 70800037 220UH INDUCTOR, 200MA, SMT  
 L2  
 5 3.3KS 3.3K 70200023 3.3K--1/8W--5%---smt  
 R3, R4, R5, R14, R15  
 1 330S 330 70200071 330--1/8W--5%---SM  
 R1  
 2 39PFS 39PF 70300012 39PF COG 50V 5% SMT 1206  
 C8, C9  
 1 47V35S 70300079 70300079 47MFD--+/--20%--35VDC--EL--SMT  
 C18

1 8.192MHHS 8.192MH 70800036 8.192 MHZ, CRYSTAL, SMT, T&R  
 CR4  
 2 BEAD4101 FB 70504101 BLM41A01-PT FERRITE CHIP  
 L1, L3  
 1 CS4811 CS4811 70418224 CS4811 DSP+CODEC, 100-PIN MQFP, SMT  
 U2  
 1 EESPRVRB EESPRVRB 70418223 8K X 8BIT SERIAL EEPROM W/SPR.REVERB ALG.,5MHZ  
 S U1  
 1 LM2594M5 LM2594M5 70418220 LM2594M5.0.5V STEP-DOWN REGULATOR, SMT  
 U4  
 1 MN13821T MN13821T 70418225 VOLT. DET/RESET MONITOR, 4.4V, N-CH, OPEN DRAIN,  
 U5  
 1 TCONN7 73716729 73716729 7 CCND. SPOX WIRE TO BOARD HEADER  
 J1

\*\*\*\*\*  
 \* END OF BILL OF MATERIALS REPORT \*  
 \*\*\*\*\*