

\*COMPANY PROPRIETARY INFORMATION\*

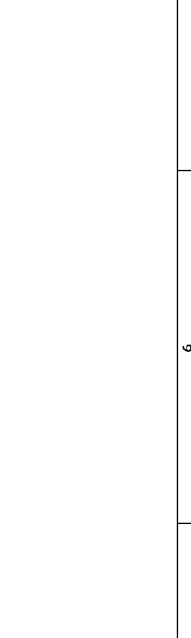
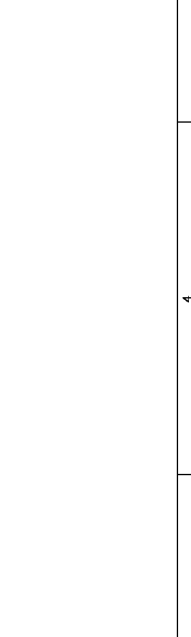
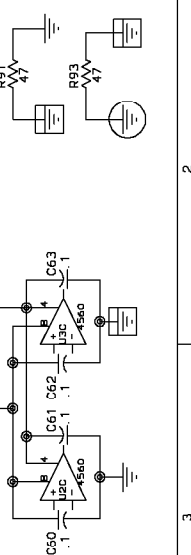
PEAVEY ELECTRONICS CORP.  
711 A STREET  
Meridian, Mississippi 39301

TITLE  
TUBE PRE-AMPLIFIER

REV  
P9800152

PRINT  
DATE 28-OCT-99

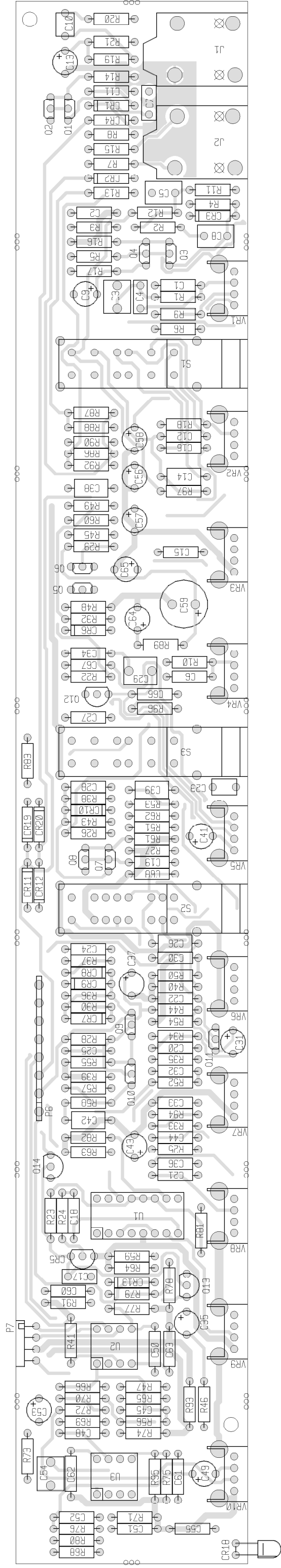
SHEET 1 OF 1



NOTICE: THIS CIRCUITRY IS PROTECTED BY U.S. PATENT NOS. 7,114,482; 7,114,483; 7,114,484; 7,114,485; 7,114,486; 7,114,487; 7,114,488; 7,114,489; 7,114,490; 7,114,491; 7,114,492; 7,114,493; 7,114,494; 7,114,495; 7,114,496; 7,114,497; 7,114,498; 7,114,499; 7,114,500; 7,114,501; 7,114,502; 7,114,503; 7,114,504; 7,114,505; 7,114,506; 7,114,507; 7,114,508; 7,114,509; 7,114,510; 7,114,511; 7,114,512; 7,114,513; 7,114,514; 7,114,515; 7,114,516; 7,114,517; 7,114,518; 7,114,519; 7,114,520; 7,114,521; 7,114,522; 7,114,523; 7,114,524; 7,114,525; 7,114,526; 7,114,527; 7,114,528; 7,114,529; 7,114,530; 7,114,531; 7,114,532; 7,114,533; 7,114,534; 7,114,535; 7,114,536; 7,114,537; 7,114,538; 7,114,539; 7,114,540; 7,114,541; 7,114,542; 7,114,543; 7,114,544; 7,114,545; 7,114,546; 7,114,547; 7,114,548; 7,114,549; 7,114,550; 7,114,551; 7,114,552; 7,114,553; 7,114,554; 7,114,555; 7,114,556; 7,114,557; 7,114,558; 7,114,559; 7,114,560; 7,114,561; 7,114,562; 7,114,563; 7,114,564; 7,114,565; 7,114,566; 7,114,567; 7,114,568; 7,114,569; 7,114,570; 7,114,571; 7,114,572; 7,114,573; 7,114,574; 7,114,575; 7,114,576; 7,114,577; 7,114,578; 7,114,579; 7,114,580; 7,114,581; 7,114,582; 7,114,583; 7,114,584; 7,114,585; 7,114,586; 7,114,587; 7,114,588; 7,114,589; 7,114,590; 7,114,591; 7,114,592; 7,114,593; 7,114,594; 7,114,595; 7,114,596; 7,114,597; 7,114,598; 7,114,599; 7,114,600; 7,114,601; 7,114,602; 7,114,603; 7,114,604; 7,114,605; 7,114,606; 7,114,607; 7,114,608; 7,114,609; 7,114,610; 7,114,611; 7,114,612; 7,114,613; 7,114,614; 7,114,615; 7,114,616; 7,114,617; 7,114,618; 7,114,619; 7,114,620; 7,114,621; 7,114,622; 7,114,623; 7,114,624; 7,114,625; 7,114,626; 7,114,627; 7,114,628; 7,114,629; 7,114,630; 7,114,631; 7,114,632; 7,114,633; 7,114,634; 7,114,635; 7,114,636; 7,114,637; 7,114,638; 7,114,639; 7,114,640; 7,114,641; 7,114,642; 7,114,643; 7,114,644; 7,114,645; 7,114,646; 7,114,647; 7,114,648; 7,114,649; 7,114,650; 7,114,651; 7,114,652; 7,114,653; 7,114,654; 7,114,655; 7,114,656; 7,114,657; 7,114,658; 7,114,659; 7,114,660; 7,114,661; 7,114,662; 7,114,663; 7,114,664; 7,114,665; 7,114,666; 7,114,667; 7,114,668; 7,114,669; 7,114,670; 7,114,671; 7,114,672; 7,114,673; 7,114,674; 7,114,675; 7,114,676; 7,114,677; 7,114,678; 7,114,679; 7,114,680; 7,114,681; 7,114,682; 7,114,683; 7,114,684; 7,114,685; 7,114,686; 7,114,687; 7,114,688; 7,114,689; 7,114,690; 7,114,691; 7,114,692; 7,114,693; 7,114,694; 7,114,695; 7,114,696; 7,114,697; 7,114,698; 7,114,699; 7,114,700; 7,114,701; 7,114,702; 7,114,703; 7,114,704; 7,114,705; 7,114,706; 7,114,707; 7,114,708; 7,114,709; 7,114,710; 7,114,711; 7,114,712; 7,114,713; 7,114,714; 7,114,715; 7,114,716; 7,114,717; 7,114,718; 7,114,719; 7,114,720; 7,114,721; 7,114,722; 7,114,723; 7,114,724; 7,114,725; 7,114,726; 7,114,727; 7,114,728; 7,114,729; 7,114,730; 7,114,731; 7,114,732; 7,114,733; 7,114,734; 7,114,735; 7,114,736; 7,114,737; 7,114,738; 7,114,739; 7,114,740; 7,114,741; 7,114,742; 7,114,743; 7,114,744; 7,114,745; 7,114,746; 7,114,747; 7,114,748; 7,114,749; 7,114,750; 7,114,751; 7,114,752; 7,114,753; 7,114,754; 7,114,755; 7,114,756; 7,114,757; 7,114,758; 7,114,759; 7,114,760; 7,114,761; 7,114,762; 7,114,763; 7,114,764; 7,114,765; 7,114,766; 7,114,767; 7,114,768; 7,114,769; 7,114,770; 7,114,771; 7,114,772; 7,114,773; 7,114,774; 7,114,775; 7,114,776; 7,114,777; 7,114,778; 7,114,779; 7,114,780; 7,114,781; 7,114,782; 7,114,783; 7,114,784; 7,114,785; 7,114,786; 7,114,787; 7,114,788; 7,114,789; 7,114,790; 7,114,791; 7,114,792; 7,114,793; 7,114,794; 7,114,795; 7,114,796; 7,114,797; 7,114,798; 7,114,799; 7,114,800; 7,114,801; 7,114,802; 7,114,803; 7,114,804; 7,114,805; 7,114,806; 7,114,807; 7,114,808; 7,114,809; 7,114,810; 7,114,811; 7,114,812; 7,114,813; 7,114,814; 7,114,815; 7,114,816; 7,114,817; 7,114,818; 7,114,819; 7,114,820; 7,114,821; 7,114,822; 7,114,823; 7,114,824; 7,114,825; 7,114,826; 7,114,827; 7,114,828; 7,114,829; 7,114,830; 7,114,831; 7,114,832; 7,114,833; 7,114,834; 7,114,835; 7,114,836; 7,114,837; 7,114,838; 7,114,839; 7,114,840; 7,114,841; 7,114,842; 7,114,843; 7,114,844; 7,114,845; 7,114,846; 7,114,847; 7,114,848; 7,114,849; 7,114,850; 7,114,851; 7,114,852; 7,114,853; 7,114,854; 7,114,855; 7,114,856; 7,114,857; 7,114,858; 7,114,859; 7,114,860; 7,114,861; 7,114,862; 7,114,863; 7,114,864; 7,114,865; 7,114,866; 7,114,867; 7,114,868; 7,114,869; 7,114,870; 7,114,871; 7,114,872; 7,114,873; 7,114,874; 7,114,875; 7,114,876; 7,114,877; 7,114,878; 7,114,879; 7,114,880; 7,114,881; 7,114,882; 7,114,883; 7,114,884; 7,114,885; 7,114,886; 7,114,887; 7,114,888; 7,114,889; 7,114,890; 7,114,891; 7,114,892; 7,114,893; 7,114,894; 7,114,895; 7,114,896; 7,114,897; 7,114,898; 7,114,899; 7,114,900; 7,114,901; 7,114,902; 7,114,903; 7,114,904; 7,114,905; 7,114,906; 7,114,907; 7,114,908; 7,114,909; 7,114,910; 7,114,911; 7,114,912; 7,114,913; 7,114,914; 7,114,915; 7,114,916; 7,114,917; 7,114,918; 7,114,919; 7,114,920; 7,114,921; 7,114,922; 7,114,923; 7,114,924; 7,114,925; 7,114,926; 7,114,927; 7,114,928; 7,114,929; 7,114,930; 7,114,931; 7,114,932; 7,114,933; 7,114,934; 7,114,935; 7,114,936; 7,114,937; 7,114,938; 7,114,939; 7,114,940; 7,114,941; 7,114,942; 7,114,943; 7,114,944; 7,114,945; 7,114,946; 7,114,947; 7,114,948; 7,114,949; 7,114,950; 7,114,951; 7,114,952; 7,114,953; 7,114,954; 7,114,955; 7,114,956; 7,114,957; 7,114,958; 7,114,959; 7,114,960; 7,114,961; 7,114,962; 7,114,963; 7,114,964; 7,114,965; 7,114,966; 7,114,967; 7,114,968; 7,114,969; 7,114,970; 7,114,971; 7,114,972; 7,114,973; 7,114,974; 7,114,975; 7,114,976; 7,114,977; 7,114,978; 7,114,979; 7,114,980; 7,114,981; 7,114,982; 7,114,983; 7,114,984; 7,114,985; 7,114,986; 7,114,987; 7,114,988; 7,114,989; 7,114,990; 7,114,991; 7,114,992; 7,114,993; 7,114,994; 7,114,995; 7,114,996; 7,114,997; 7,114,998; 7,114,999; 7,114,1000.

LAST REFNUM USED: R95 C68 CR18 Q14 U3 S7 VR11 J2 P6

COPYRIGHT 2000 PEAVEY ELECTRONICS CORP. PRINTED IN U.S.A.



# Transtube Preamp

## Notes

Do NOT insert CR18 & R92 for: Bandit II/Studio Pro II

Use Ribbon-Cable P/N 70600018 for:

BanditII/StudioII

Use Ribbon-Cable P/N 70600097 for:

EnvoyII



BILL OF MATERIALS REPORT

BOARD NAME: TRANSTUBE PREAMP REPORT DATE: 2APR01  
 ASSEMBLY LEVEL NUMBER: 99091990/91  
 PROJECT NUMBER: P9800152

CBDS

PART PART DESCRIPTION AND  
 \*\* QTY. NAME VALUE NUMBER DEVICE DESIGNATIONS \*\*\*\*\*  
 \*\*\*\*\*

|   |          |          |          |                                      |
|---|----------|----------|----------|--------------------------------------|
| 1 | 72100710 | 72100710 | ECN00198 | PCB                                  |
| 2 | .001     | .001     | 70340000 | .001MF----10%----50VDC----MON----T&R |
|   |          |          |          | C20, C27                             |
| 1 | .0015M   | .0015M   | 70330120 | .0015M 5% 50vdc my T&A               |
|   |          |          |          | C23                                  |
| 1 | .0033    | .0033    | 70340006 | .0033MF---10%----50VDC----T/C----T&R |
|   |          |          |          | C1                                   |
| 1 | .0039M   | .0039M   | 70330153 | .0039MF-5%-50VDC-MY-T&A              |
|   |          |          |          | C4                                   |
| 1 | .0068    | .0068    | 70340008 | .0068MF---10%----50VDC----MON----T&R |
|   |          |          |          | C33                                  |
| 1 | .0068M   | .0068M   | 70330117 | .0068mf--5%--50vdc---my---t&a        |
|   |          |          |          | C10                                  |
| 1 | .01      | .01      | 70340011 | .01MF-----10%----50VDC----T/C----T&R |
|   |          |          |          | C67                                  |
| 1 | .012     | .012     | 70340009 | .012MF---10%----50VDC----T/C----T&R  |
|   |          |          |          | C16                                  |
| 2 | .015     | .015     | 70340010 | .015MF---10%----50VDC----T/C----T&R  |
|   |          |          |          | C32, C50                             |
| 4 | .022     | .022     | 70340012 | .022MF---10%----50VDC----MON----T&R  |
|   |          |          |          | C12, C15, C36, C44                   |
| 4 | .047     | .047     | 70340017 | .047MF---10%----50VDC----MON----T&R  |
|   |          |          |          | C19, C24, C25, C55                   |
| 2 | .047M    | .047M    | 70330136 | .047M 5% 50vdc my T&A                |
|   |          |          |          | C5, C8                               |
| 7 | .1       | .1       | 70340100 | .1MF----+80-20%--50VDC----AXL----T&R |
|   |          |          |          | C2, C18, C22, C60, C61, C62, C63     |
| 5 | .1P10    | .1P10    | 70340101 | .1MF-----10%----50VDC----MON----T&R  |
|   |          |          |          | C14, C26, C38, C39, C42              |
| 2 | .1SF     | .1SF     | 70330113 | 0.10 MFD 10% 100V STCK FILM T&A      |

C7, C17

2 .22SF2 .22SF2 70330114 0.22 MF 5% 100V STCK FILM t&a

C3, C29

1 .47SF63 .47SF63 70330159 .047 MF 63V STACK FILM T&A

C54

1 1.3K 1.3K 70240061 1.3K--1/4W--5%----CF--T&R

R63

7 1.5K 1.5K 70240018 1.5K--1/4W--5%----CF--T&R

R21, R45, R49, R51, R80, R90, R92

1 100 100 70240010 100---1/4W--5%----CF--T&R

R83

8 100K 100K 70240034 100K--1/4W--5%----CF--T&R

R6, R14, R16, R46, R47, R48, R71, R77

1 100KARA 71190906 71190906 100K--15A--12MM--R/A D-SHAFT

VR1

4 100PF 100PF 70340054 100PF-----10%----50VDC----T/C----T&R

C48, C51, C52, C66

1 105KP1 105KP1 70241076 105K-1/4W--1%----MF--T&R

R5

4 10K 10K 70240025 10K---1/4W--5%----CF--T&R

R44, R64, R65, R96

1 10KBRA 71190900 71190900 10KB--12MM--R/A D-SHAFT

VR10

1 12K 12K 70240057 12K---1/4W--5%----CF--T&R

R86

1 133KP1 133KP1 70240133 133K 1% 1/4W MF T&R

R1

2 150KP1 150KP1 70241035 150K--1/4W--1%----MF--T&R

R26, R29

10 1740 1740 70401740 2SC1740SLN 40V.,1A, NPN, LOW NOISE T&A

Q1, Q2, Q3, Q4, Q5, Q6, Q7, Q8, Q9, Q10

6 1K 1K 70240017 1K----1/4W--5%----CF--T&R

R52, R56, R68, R73, R87, R88

6 1M 1M 70240039 1M---1/4W--5%----CF--T&R

R22, R23, R36, R39, R40, R59

2 1M5ARA 71190910 71190910 1M--5A--12MM--R/A D-SHAFT  
VR2, VR6

14 1N4148 4148 70464148 1N4148 75V 10MA SILICON DIODE  
CR1, CR2, CR3, CR4, CR6, CR7, CR8, CR9,  
CR10, CR11, CR12, CR13, CR19, CR20

2 2.2K 2.2K 70240020 2.2K--1/4W--5%---CF--T&R  
R53, R58

3 2.2M 2.2M 70240040 2.2M--1/4W--5%---CF--T&R  
R4, R11, R27

2 2.2R50 2.2R50 70320180 2.2MF-----20%---50VDC---EL--T&A  
C49, C65

2 20KBRA 71190903 71190903 20KB--12MM--R/A D-SHAFT  
VR3, VR7

3 22 22 70240007 22---1/4W--5%---CF--T&R  
R75, R78, R95

2 220K 220K 70240036 220K--1/4W--5%---CF--T&R  
R41, R54

1 220R50 220R50 70320187 220MF-----20%---50VDC---EL--T&A  
C59

7 22K 22K 70240029 22K---1/4W--5%---CF--T&R  
R7, R15, R50, R66, R70, R72, R76

12 22R50 22R50 70320181 22MF-----20%---50VDC---EL--T&A  
C9, C13, C31, C35, C37, C41, C43, C53,  
C56, C57, C58, C64

2 243KP1 243KP1 70241037 243---1/4W--1%---MF--T&R  
R13, R32

1 25.5KP1 25.5KP1 70240121 25.5K 1% 1/4W MF T&R  
R9

1 250K5ARA 71190907 71190907 250K--5A--12MM--R/A D-SHAFT  
VR5

2 250KBRA 71190908 71190908 250KB--12MM--R/A D-SHAFT  
VR8, VR9

3 270PF 270PF 70340057 270PF-----10%---50VDC---T/C---T&R  
C6, C11, C21

1 27PF 27PF 70340066 27PF-----10%---50VDC---T/C---T&R  
C45

3 3.3K 3.3K 70240022 3.3K--1/4W--5%----CF--T&R  
R17, R60, R62

1 300KARA 71190912 71190912 300K--25A--CT--12MM--R/A D-SHAFT  
VR4

1 330K 330K 70240037 330K--1/4W--5%----CF--T&R  
R25

1 33K 33K 70240030 33K---1/4W--5%----CF--T&R  
R97

1 37.4KP1 37.4KP1 70240052 37.4K-1/4W--1%---MF--T&R  
R3

1 39K 39K 70240048 39K---1/4W--5%----CF--T&R  
R18

1 4.53KP1 4.53KP1 70240109 4.53K 1% 1/4W MF T&R  
R19

3 4.7K 4.7K 70240023 4.7K--1/4W--5%----CF--T&R  
R8, R79, R89

2 4560 4560 70414560 4560 DUAL OP AMP IC  
U2, U3

3 47 47 70240008 47----1/4W--5%----CF--T&R  
R24, R91, R93

7 470K 470K 70240038 470K--1/4W--5%----CF--T&R  
R10, R37, R38, R43, R55, R61, R94

3 470PF 470PF 70340058 470PF-----10%----50VDC----T/C----T&R  
C28, C30, C68

2 47K 47K 70240031 47K---1/4W--5%----CF--T&R  
R34, R35

2 4P2TLRA 4P2TLRA 71322395 4P2T RA LEVER ACTUATED SLIDE SWITCH  
S1, S3

1 4P3TLRA 4P3TLRA 71322396 4P3T RA LEVER ACTUATED SLIDE SWITCH  
S2

1 4SRHRAU 73717084 73717084 4 PIN RA SQ/P F/LK HD .100  
P7

2 6.8K 6.8K 70240024 6.8K--1/4W--5%----CF--T&R  
R81, R82

1 68 68 70240009 68----1/4W--5%----CF--T&R

R74

1 680 680 70240016 680---1/4W--5%---CF--T&R

R57

1 680K 680K 70240065 680K---1/4W--5%---CF--T&R

R2

4 68K 68K 70240032 68K---1/4W--5%---CF--T&R

R12, R20, R33, R69

1 68KP1 68KP1 70241070 68K---1/4W--1%---MF--T&R

R28

1 820PF 820PF 70340062 820PF-----10%-----50VDC----T/C----T&R

C34

1 82K 82K 70240033 82K---1/4W--5%---CF--T&R

R30

1 933 933 70400933 2SA933ASLN 40V, .1A, PNP, LOW NOISE T&A

Q11

1 CAB0018 70600018 70600018 8C .156 - 5" JMPR W/FEED-TO CONN.

P6

1 DG211 DG211 70420211 DG211 C.J.I.C.

U1

3 J174 J174 70460174 J-174 30V TO-92 P-CHAN FET T&A

Q12, Q13, Q14

1 MAC97 MAC97 70460097 MAC97-6 400V .6A TO-92 TRIAC T&A

CR5

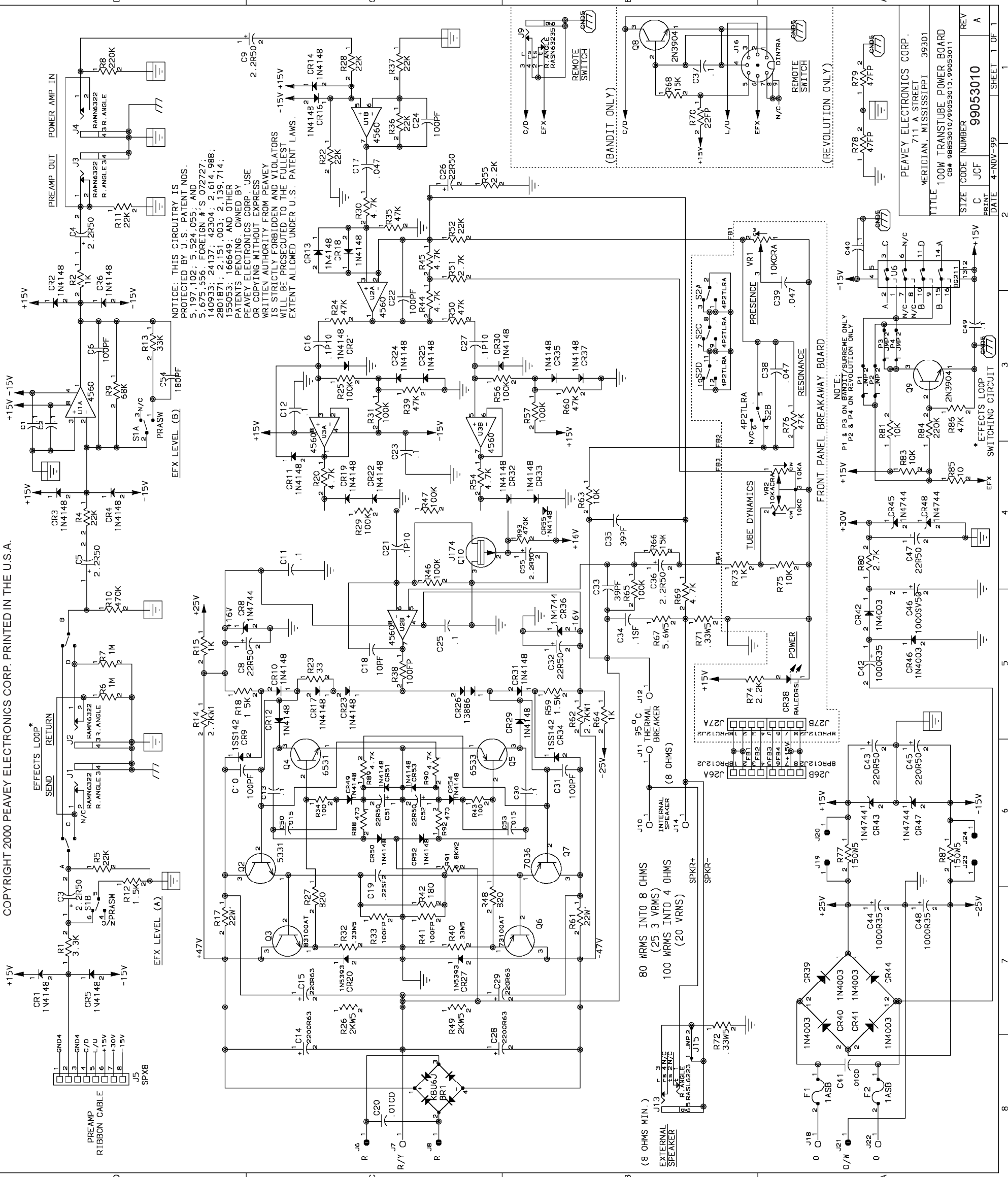
1 RALEDRSL RALEDRSL 70450053 LED, T-1, RED, W/STOPPER LEAD T&A

CR18

2 RAMN6322 71466322 71466322 JACK MONO R/A 1/4" 6.5MM NINS

J1, J2

\*\*\*\*\*  
\* END OF BILL OF MATERIALS REPORT \*  
\*\*\*\*\*



NOTICE: THIS CIRCUITRY IS PROTECTED BY U.S. PATENT NOS. 5,197,102; 5,524,055; AND 5,675,556. FOREIGN # S 072727; 140933; 24137; 42304; 2,614,988; 2801871; 2,151,003; 2,135,714; 150553; 166649; AND OTHER PATENTS PENDING. OWNED BY PEAVEY ELECTRONICS CORP. USE OR COPYING WITHOUT EXPRESS WRITTEN AUTHORITY FROM PEAVEY IS STRICTLY FORBIDDEN AND VIOLATORS WILL BE PROSECUTED TO THE FULLEST EXTENT ALLOWED UNDER U.S. PATENT LAWS.

**FRONT PANEL BREAKAWAY BOARD**  
(REVOLUTION ONLY)

NOTE: P1 & P3 ON BANDIT/SURREME ONLY  
P2 & P4 ON REVOLUTION ONLY

PEAVEY ELECTRONICS CORP.  
711 A STREET  
MERIDIAN, MISSISSIPPI 39301

TITLE 100W TRANSUBE POWER BOARD  
CB# 98653010/99053010; 99053011

SIZE CODE NUMBER **99053010** REV A

PRINT C JCF  
DATE 4-NOV-99 SHEET 1 OF 1

(8 OHMS MIN.)  
J13 EXTERNAL SPEAKER  
R7 ANGLE  
R5 RASL6223

80 WRMS INTO 8 OHMS  
(25.3 VRMS)  
100 WRMS INTO 4 OHMS  
(20 VRMS)

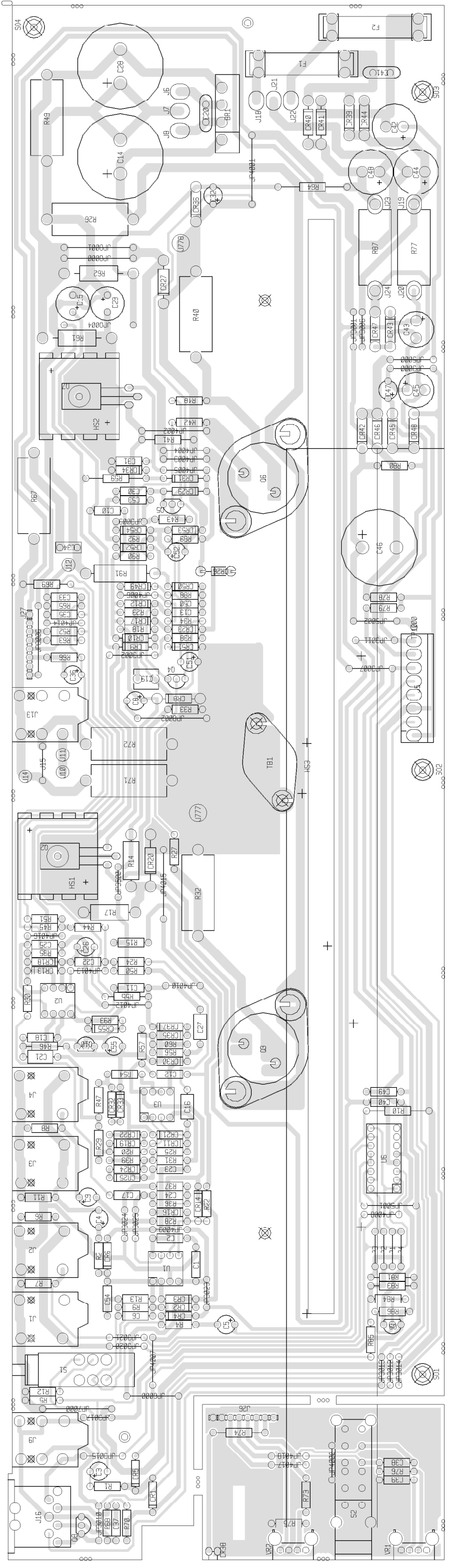
TUBE DYNAMICS  
VR2 10KACR4  
VR1 10KCR4

PRESENCE 3  
VR1 10KCR4

(BANDIT ONLY.)  
C/D  
E/FX  
R ANGLE  
R ANGLE  
R ANGLE  
R ANGLE

(REVOLUTION ONLY.)  
C/D  
E/FX  
L/U  
E/FX  
N/C  
DIN7RA





TRANSTUBE 100W POWER AMP

BILL OF MATERIALS REPORT

BOARD NAME: 104TMOD      REPORT DATE: 18NOV99  
 ASSEMBLY LEVEL NUMBER: 99053010  
 PROJECT NUMBER: P9800153

CBDS

PART      PART      DESCRIPTION AND

\*\* QTY. NAME    VALUE    NUMBER    DEVICE DESIGNATIONS \*\*\*\*\*  
 \*\*\*\*\*

|    |          |          |          |  |
|----|----------|----------|----------|--|
| 1  | 98853010 | 98853010 | 98853010 | PCB  |
| 2  | .015     | .015     | 70340010 | .015MF----10%----50VDC----T/C----T&R<br>C50, C53   |
| 2  | .01CD    | .01CD    | 70320248 | .01MF----20%---1000VDC---CD--T&A<br>C20, C41   |
| 3  | .047     | .047     | 70340017 | .047MF----10%----50VDC----MON----T&R<br>C17, C38, C39  |
| 11 | .1       | .1       | 70340100 | .1MF----+80-20%--50VDC----AXL----T&R<br>C1, C2, C11, C12, C13, C23, C25, C30,<br>C37, C40, C49 |
| 3  | .1P10    | .1P10    | 70340101 | .1MF-----10%----50VDC----MON----T&R<br>C16, C21, C27   |
| 1  | .1SF     | .1SF     | 70330113 | 0.10 MFD 10% 100V STCK FILM T&A<br>C34   |
| 1  | .22SF2   | .22SF2   | 70330114 | 0.22 MF 5% 100V STCK FILM t&a<br>C19   |
| 4  | .33W5    | .33W5    | 70250003 | .33--5W--10%--WW--AXL<br>R32, R40, R71, R72  |
| 3  | 1.5K     | 1.5K     | 70240018 | 1.5K--1/4W--5%----CF--T&R<br>R12, R18, R59   |
| 1  | 10       | 10       | 70240003 | 10----1/4W--5%----CF--T&R<br>R85   |
| 2  | 100      | 100      | 70240010 | 100---1/4W--5%----CF--T&R<br>R34, R43  |
| 3  | 1000R35  | 1000R35  | 70320186 | 1000MF----20%----35VDC--EL--T&A<br>C42, C44, C48   |
| 1  | 1000SV50 | 1000SV50 | 70320147 | 1000MF--30/20%--50VDC--EL-R/S<br>C46   |
| 3  | 100FP    | 100FP    | 70240096 | 100FP-1/4W--5%----FP--T&R<br>R33, R38, R41   |
| 8  | 100K     | 100K     | 70240034 | 100K--1/4W--5%----CF--T&R  |

R25, R29, R31, R46, R47, R56, R57, R65

5 100PF 100PF 70340054 100PF-----10%----50VDC----T/C----T&R  
C6, C10, C22, C24, C31

4 10K 10K 70240025 10K---1/4W--5%----CF--T&R  
R63, R75, R81, R83

1 10KACRA 71190914 71190914 10K--15A--12MM--R/A D-SHAFT  
VR2

1 10KCRA 71190902 71190902 10K--15C--12MM--R/A D-SHAFT  
VR1

1 10PF 10PF 70340050 10PF-----5%-----T/C----T&R  
C18

1 13886 13886 70413886 SZ-13886-2 DUAL DIODE  
CR26

2 150W5 150W5 70250040 150--5W--10%--WW--AXL  
R77, R87

2 15K 15K 70240027 15K---1/4W--5%----CF--T&R  
R66, R68

1 180 180 70240012 180---1/4W--5%----CF--T&R  
R42

1 180PF 180PF 70340056 180PF-----10%----50VDC----T/C----T&R  
C54

2 1ASB 1ASB 70900379 1 AMP S/B FUSE WITH 2 FUSECLIPS #70900816  
F1, F2

4 1K 1K 70240017 1K----1/4W--5%----CF--T&R  
R2, R15, R64, R73

2 1M 1M 70240039 1M----1/4W--5%----CF--T&R  
R6, R7

6 1N4003 1N4003 70464003 1N4003 200V SILICON DIODE  
CR39, CR40, CR41, CR42, CR44, CR46

34 1N4148 4148 70464148 1N4148 75V 10MA SILICON DIODE  
CR1, CR2, CR3, CR4, CR5, CR6, CR10,  
CR11, CR12, CR13, CR14, CR16, CR17,  
CR18, CR19, CR21, CR22, CR23, CR24,  
CR25, CR29, CR30, CR31, CR32, CR33,  
CR35, CR37, CR49, CR50, CR51, CR52,  
CR53, CR54, CR55

6 1N4744 4744 70440102 SZG40102 15V 5% ZENER DIODE

CR8, CR36, CR43, CR45, CR47, CR48

2 1N5393 5393 70465393 1N5393-RL 200V, 1.5, 5% DIODE -T&R

CR20, CR27

2 1SS142 1SS142 70400142 1ss142 250v SILICON DIODE

CR9, CR34

2 2.2K 2.2K 70240020 2.2K--1/4W--5%---CF--T&R

R55, R74

6 2.2R50 2.2R50 70320180 2.2MF-----20%---50VDC---EL--T&A

C3, C4, C5, C9, C36, C55

2 2.7K 2.7K 70240021 2.7K--1/4W--5%---CF--T&R

R51, R80

2 2.7KW1 2.7KW1 70210016 2.7K--1W---5%---MO--T&R

R14, R62

2 2200R63 2200R63 70320347 2200MF---20%---63VDC---EL---R/S

C14, C28

2 220K 220K 70240036 220K--1/4W--5%---CF--T&R

R8, R84

2 220R50 220R50 70320187 220MF-----20%---50VDC---EL--T&A

C43, C45

2 220R63 220R63 70320305 220uF---63V--20%---EL--T&A

C15, C29

1 22FP 22FP 70240100 22FP--1/4W--5%---FP-----

R70

8 22K 22K 70240029 22K---1/4W--5%---CF--T&R

R4, R5, R11, R22, R28, R36, R37, R52

6 22R50 22R50 70320181 22MF-----20%---50VDC---EL--T&A

C8, C26, C32, C47, C51, C52

2 22W1 22W1 70210001 22----1W---5%---MO--T&R

R17, R61

2 2KW5 2KW5 70250063 2K--5W--10%--WW--AXL

R26, R49

2 2N3904 3904 70463904 3904/SPS7239 TO 92 NPN T&A

Q8, Q9

1 3.3K 3.3K 70240022 3.3K--1/4W--5%---CF--T&R

R1

1 33 33 70240004 33----1/4W--5%----CF--T&R  
 R23

1 33K 33K 70240030 33K---1/4W--5%----CF--T&R  
 R13

2 39PF 39PF 70340052 39PF-----50VDC----T/C----T&R  
 C33, C35

8 4.7K 4.7K 70240023 4.7K--1/4W--5%----CF--T&R  
 R20, R30, R44, R45, R54, R69, R89, R90

4 437STW 70901891 70901891 SPCR, .437(#4),.187 SW,AL  
 SO1, SO2, SO3, SO4

3 4560 4560 70414560 4560 DUAL OP AMP IC  
 U1, U2, U3

2 470 470 70240015 470---1/4W--5%----CF--T&R  
 R88, R92

2 470K 470K 70240038 470K--1/4W--5%----CF--T&R  
 R10, R93

2 47FP 47FP 70240090 47FP--1/4W--5%----FP--T&R  
 R78, R79

7 47K 47K 70240031 47K---1/4W--5%----CF--T&R  
 R24, R35, R39, R50, R60, R76, R86

1 4P2TLRA 4P2TLRA 71322395 4P2T RA LEVER ACTUATED SLIDE SWITCH  
 S2

1 5.6W5 5.6W5 70250026 5.6--5W--10%--WW--AXL  
 R67

1 5331 5331 70405331 SJE-5331 CASE-77 NPN  
 Q2

1 6.8KW2 6.8KW2 70250052 6.8K---2W---5%---MF---T&R  
 R91

1 6531 6531 70466531 MPS-6531 TO92 NPN TRANS. T&A  
 Q4

1 6533 6534 70466533 MPS-6533/34 TO-92 PNP TRANS T&A  
 Q5

1 68K 68K 70240032 68K---1/4W--5%----CF--T&R  
 R9

1 7036 7036 70407036 SJE-7036 CASE-77 PNP XSISTOR

Q7

1 73100AT 73100T 70473100 SJ-73100, 3 AMP, 100V, METRIC TO-3, PNP TRANS

Q6

2 820 820 70240019 820---1/4W--5%---CF--T&R

R27, R48

1 83100AT 83100T 70483100 SJ-83100, NPN, 3 AMP, 100V, METRIC TO-3 TRANS

Q3

2 8PRC12J2 8PRC12J2 70600052 8C PRE-TIN .100 CTR 12" JUMPER (SPLIT VERSION)

J26, J27

1 DG211 DG211 70420211 DG211 CJ I.C.

U6

1 DIN7RA 71466226 71466226 CONN 7P R/A PCMNT DIN W/ 4 MNT. HOLES

J16

3 FMPU 73711811 73711811 M118-171 C.B. FEMALE MOLEX PIN

J7, J18, J22

1 HS0675 98000675 98000675 TKO 80 HEATSINK

HS3

2 HS2522 98002522 98002522 3/8" HEATSINK PUNCHED

HIS1, HIS2

1 J174 J174 70460174 J-174 30V TO-92 P-CHAN FET T&A

Q10

18 J325 J 70600005 22GA JUMPER WIRES T&R

JP3000, JP3001, JP3002,  
JP3006, JP3007, JP3009,  
JP3010, JP3011, JP3012, JP3013, JP3014,  
JP3015, JP3017,  
JP3020, JP3021, JP3023, JP3024,  
JP3025

1 J35 J 70600005 22GA JUMPER WIRES T&R

JP3500,

18 J4 J 70600005 22GA JUMPER WIRES T&R

JP4000, JP4001, JP4002, JP4003, JP4004,  
JP4005, JP4006, JP4007, JP4008, JP4009,  
JP4010, JP4012, JP4013, JP4014,  
JP4015, JP4016, JP4017, JP4018,

3 J5 J 70600005 22GA JUMPER WIRES T&R

JP5000, JP5001, JP5002,

1 J6 J 70600005 22GA JUMPER WIRES T&R

JP6000,

1 J7 J 70600005 22GA JUMPER WIRES T&R  
JP7000,

5 J8 J 70600005 22GA JUMPER WIRES T&R  
JP8000, JP8001, JP8002, JP8004,  
JP8006,

5 JMP JMP 70600005 22 GA. JUMPER WIRE T&R  
J15, P1, P2, P3, P4

1 KBU6J 70400605 70400605 6A, 600V, INLINE DIODE BRIDGE RECTIFIER  
BR1

7 MMPU 73711812 73711812 R93-12 PN C.B. MALE MOLEX PIN  
J6, J8, J19, J20, J21, J23, J24

1 PRASW PRASW 71322289 DPDT P/P CB MNT SWITCH  
S1

1 RALEDRSL RALEDRSL 70450053 LED, T-1, RED, W/STOPPER LEAD T&A  
CR38

4 RAMN6322 71466322 71466322 JACK MONO R/A 1/4" 6.5MM NINS  
J1, J2, J3, J4

1 RASL6223 71466223 71466223 jack stereo r/a 1/4" 6.5mm  
J13

1 RASN6323 71466323 71466323 JACK STEREO R/A 1/4" 6.5MM NINS  
J9

1 SPX8 SPX8 XXXXXXXXX 8 EACH OF STAKE PINS  
J5

1 TB1129 70901129 70901129 2455R-8082-723 95 DEGREE THERMAL BREAKER  
TB1

1 TP XXXXXXXXX XXXXXXXXX  
TP1000

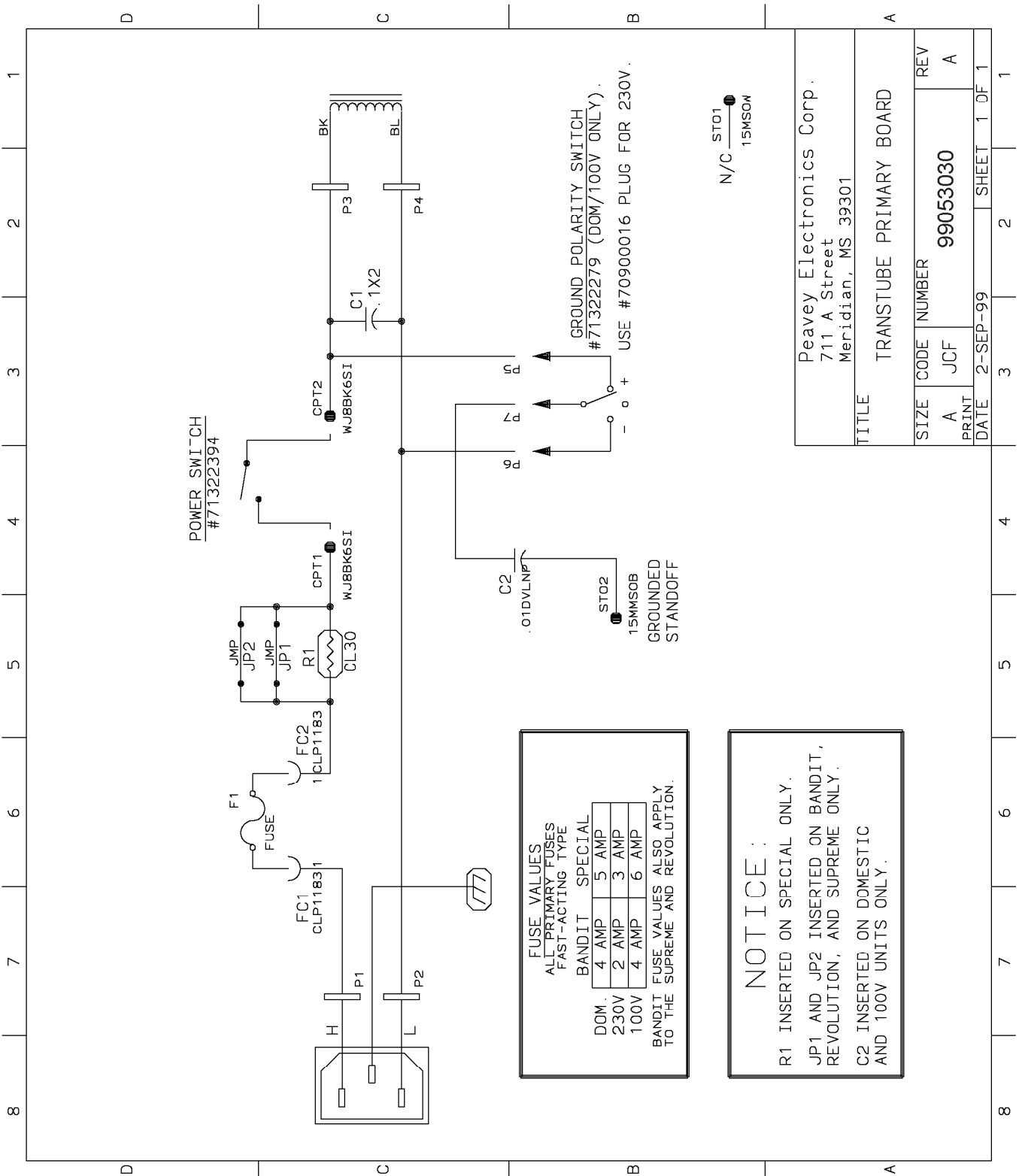
2 WJ6WH8 91090507 91090507 WH--16G--8"--WJ6--WJ6  
J777, J778

2 WJ8BK5SP WJ8BK5SP 91090506 BK-18G-5"-CPT-250SPD/RA  
J11, J12

1 WJ8BL14 WJ8BL14 91014148 BL-18G-14"-CPT-205SPD  
J14

1 WJ8YL14 WJ8YL14 91015149 YL-18G-14"-CPT-205SPD  
J10

\*\*\*\*\*



FUSE VALUES  
ALL PRIMARY FUSES  
FAST-ACTING TYPE

| BANDIT     | SPECIAL |
|------------|---------|
| DOM. 4 AMP | 5 AMP   |
| 230V 2 AMP | 3 AMP   |
| 100V 4 AMP | 6 AMP   |

BANDIT FUSE VALUES ALSO APPLY  
TO THE SUPREME AND REVOLUTION.

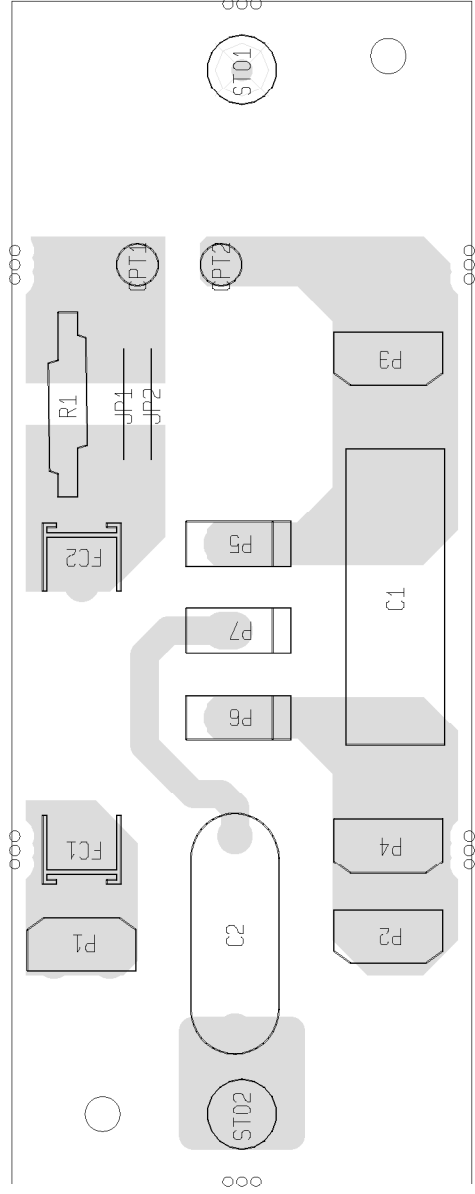
**NOTICE:**

R1 INSERTED ON SPECIAL ONLY.  
JP1 AND JP2 INSERTED ON BANDIT,  
REVOLUTION, AND SUPREME ONLY.  
C2 INSERTED ON DOMESTIC  
AND 100V UNITS ONLY.



|                                    |    |
|------------------------------------|----|
| PARTS NOT PLACED<br>IN<br>99053030 | R1 |
|------------------------------------|----|

|                                    |            |
|------------------------------------|------------|
| PARTS NOT PLACED<br>IN<br>99053031 | C2, R1     |
|                                    | P5, P6, P7 |



## TRANSTUBE PRIMARY

|                                    |          |
|------------------------------------|----------|
| PARTS NOT PLACED<br>IN<br>99053032 | JP1, JP2 |
|------------------------------------|----------|

|                                    |              |
|------------------------------------|--------------|
| PARTS NOT PLACED<br>IN<br>99053033 | C2, JP1, JP2 |
|                                    | P5, P6, P7   |

|           |                           |          |                           |          |                      |          |                      |          |
|-----------|---------------------------|----------|---------------------------|----------|----------------------|----------|----------------------|----------|
| ASS'Y P/N | BANDIT / REV DOM. PRIMARY | 99053030 | BANDIT / REV EXP. PRIMARY | 99053031 | SPECIAL DOM. PRIMARY | 99053032 | SPECIAL EXP. PRIMARY | 99053033 |
|-----------|---------------------------|----------|---------------------------|----------|----------------------|----------|----------------------|----------|

BILL OF MATERIALS REPORT

-----

BOARD NAME: TTPRIMARY REPORT DATE: 24NOV99

HUGHES ASSEMBLY LEVEL NUMBER: 99053030 DESIGNER: TIM TAYLOR/JAMES  
PROJECT NUMBER: P9800153

CBDS  
PART PART DESCRIPTION AND

\*\* QTY. NAME VALUE NUMBER DEVICE DESIGNATIONS \*\*\*\*\*  
\*\*\*\*\*

1 98853030 98853030 98853030 PCB

1 .01DVLNP .01DVLNP 70320104 .01 MFD 125VDC DVL MYLAR +0-20%

C2

1 .1X2 70320298 70320298 .1MF 250VAC X2 20%

C1

1 15MMSOB 70901889 70901889 SPACER, 15MM, .187 BRASS

STO2

1 15MSOW 70901837 70901837 SPACER, 15mm-r(#4) .187 swage alum.

STO1

1 CL30 CL30 70240202 INRUSH CURRENT LIMITER

R1

2 CLP1183 CLP1183 70901183 FUSECLIP, PC MT - T&A

FC1, FC2

2 JMP JMP 70600005 22 GA. JUMPER WIRE T&R

JP1, JP2

4 SPD 73716194 73716194 .250 PC MNT SPADE .093 PCB

P1, P2, P3, P4

3 SPX1U SPX1U 73717003 1 STAKE PIN

P5, P6, P7

2 WJ8BK6SI WJ8BK6SI 91090305 BK-18G-6"-CPT-SI187

CPT1, CPT2

\*\*\*\*\*

\* END OF BILL OF MATERIALS REPORT \*

\*\*\*\*\*