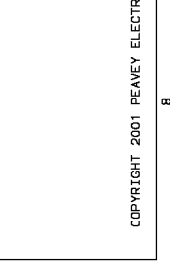
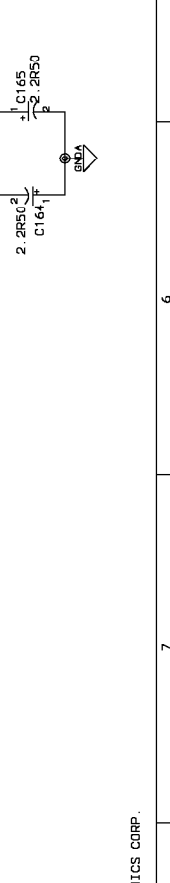
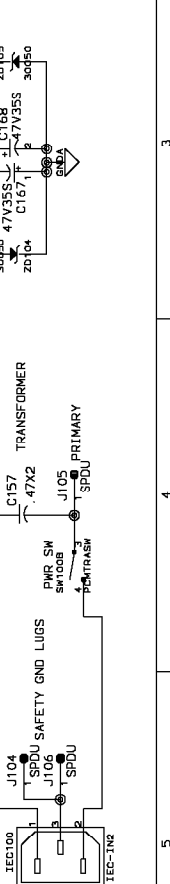
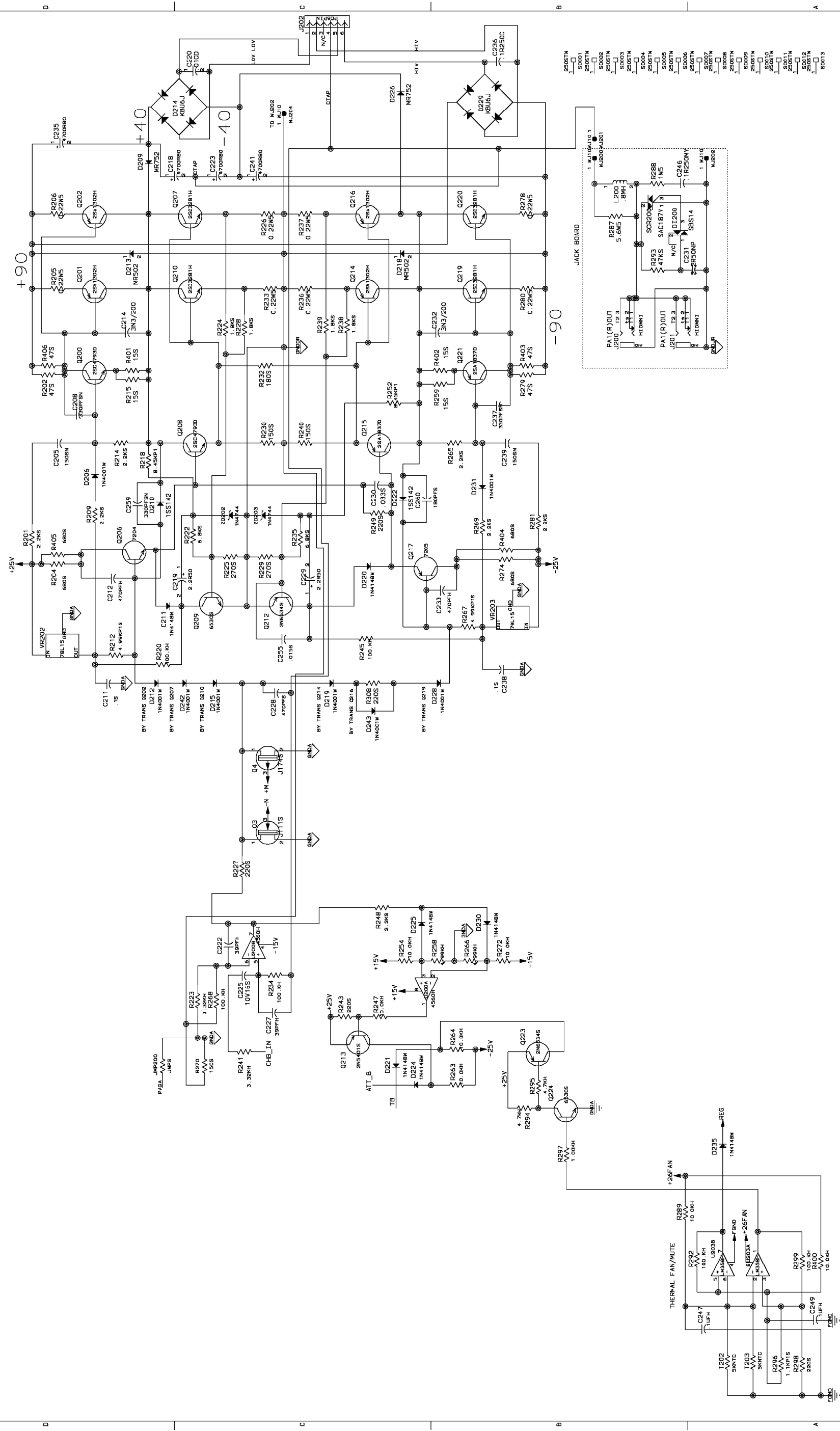


REV	A
SIZE	D
NUMBER	1
DATE	16-MAY-2003
COMPANY PROPRIETARY INFORMATION PAT. PENDING	
TITLE	Mixer amp 500 watts A
PEAVEY ELECTRONICS CORP.	
711 A STREET	
Meridian, Mississippi 39001	

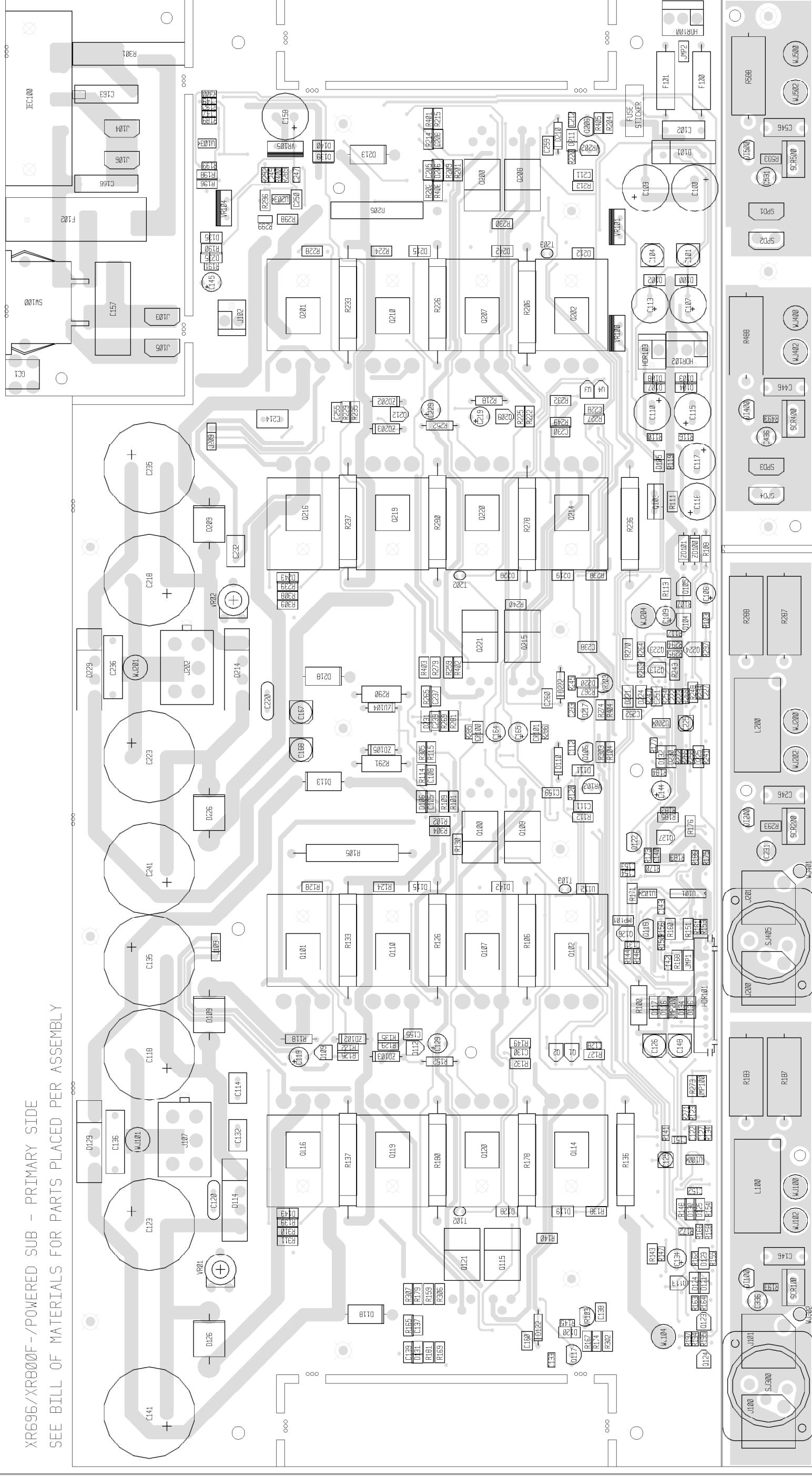




PEAVEY ELECTRONICS CORP.
 711 A STREET
 Meridian, Mississippi 39301
 TITLE Mixer amp 500 watts B
 SIZE CODE NUMBER /
 D DATE 16-MAY-2003 / SHEET 1 OF 2
 REV A

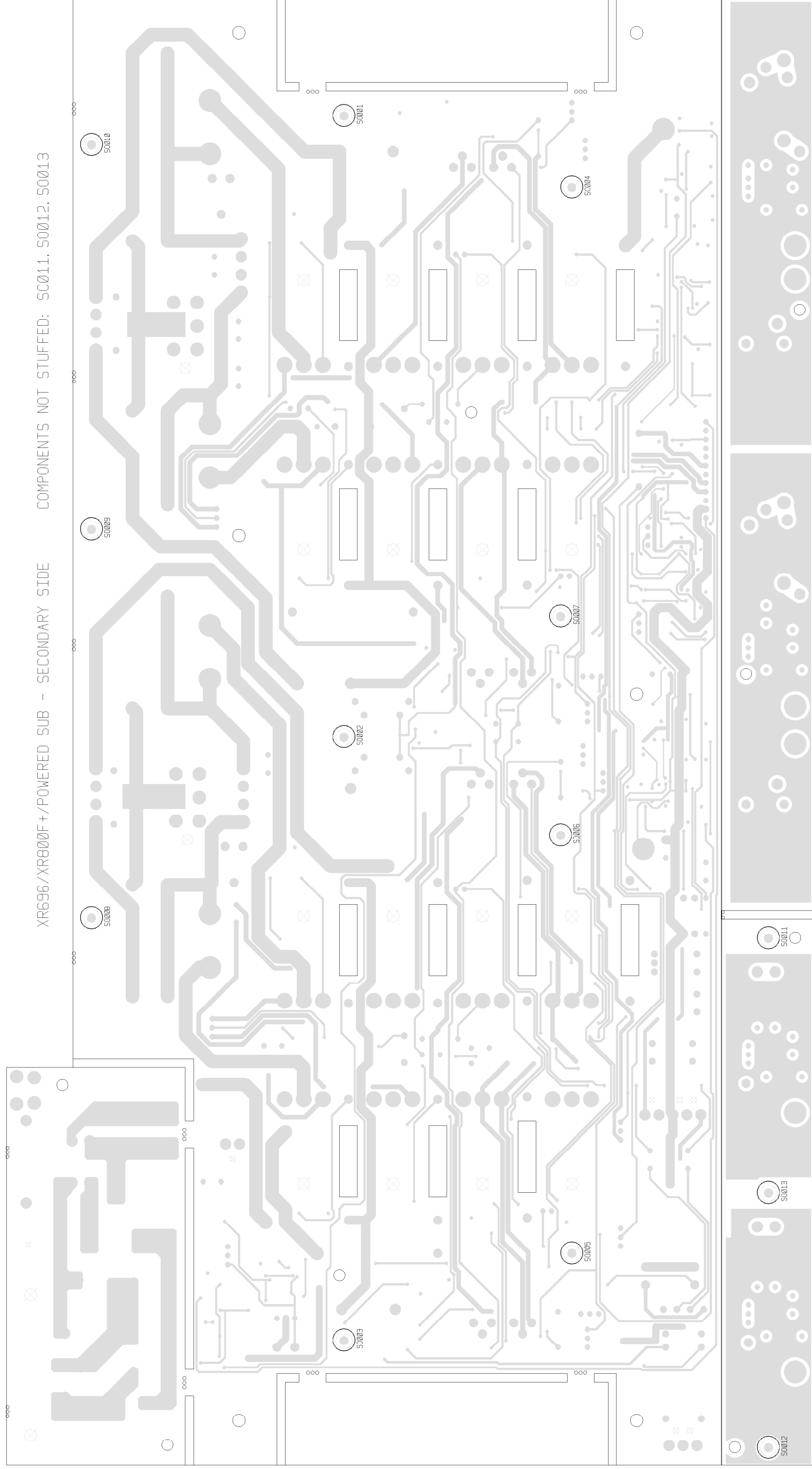
COMPANY PROPRIETARY INFORMATION PAT. PENDING REF DES 3282 C149 D243 Q224 M204
 COPYRIGHT 20001 PEAVEY ELECTRONICS CORP.

XR696/XR800F - POWERED SUB - PRIMARY SIDE
SEE BILL OF MATERIALS FOR PARTS PLACED PER ASSEMBLY



XR696/XR800F+/POWERED SUB - SECONDARY SIDE

COMPONENTS NOT STUFFED: S0011, S0012, S0013



BILL OF MATERIALS REPORT

BOARD NAME: XR696PWR REPORT DATE: 19MAY03
 ASSEMBLY LEVEL NUMBER: 99099396 DESIGNER: JAMES HUGHES / GARY GOODIN
 PROJECT NUMBER: P0000162

CBDS
 PART PART DESCRIPTION AND

** QTY. NAME VALUE NUMBER DEVICE DESIGNATIONS *****

1	72100943	72100943	ECN#0020	PCB
2	.015S	.015	70300024	.015UF--SURFACE MNT--1206 PACK C155, C255
2	.01CD	.01CD	70320248	.01MF----20%---1000VDC---CD--T&A C120, C220
2	.033S	.033	70300026	.033MF X7R 50V 5% SMT 1206 C130, C230
2	.1R250C	.1R250	70320307	.1MFD 250V CAP RADIAL C136, C236
2	.1R250MY	.1R250MY	70320096	.1 MFD 250VDC MYLAR CA/BR C146, C246
7	.1S	.1	70300035	.1MF Z5U 50V 20% SMT 1206 C111, C138, C211, C238, C250, C251, C252
10	.1UFH	.1UF	70300085	.1MF--Z5U--50V--20%--SMT--805 C142, C143, C147, C149, C151, C152, C153, C154, C247, C249
1	.47SF	.47SF	70330111	0.47 MFD STAC FILM 5% CAP C102
1	.47X2	.47X2	70320271	.47MF-20%-275VAC-MP-R/W C157
2	.8MH	.8MH	70519917	.8MH AIR CORE COIL / CS1200 L100, L200
16	0.22W5	0.22W5	70241102	.22--5W--5%--WW--AXL R105, R106, R126, R133, R136, R137, R178, R180, R205, R206, R226, R233, R236, R237, R278, R280
2	1.00KH	1.00K	70200188	1.00K OHM 1/10W 1% 805 SMT R197, R297
1	1.00MH	1.00M	70200195	1.00M--1/10W--1%--SMT--0805 R117
2	1.1KP1S	1.1K	70200069	1.1K--1/8W--1%--SMT 1206

R196, R296

2 1.5SBPCB 1.5SBPCB 70901446 FUSE,1.5A--2AG--S/B--T&R
F100, F101

8 1.8KS 1.8K 70200157 1.8K-1/8W--1%----SM
R124, R128, R138, R139, R224, R228,
R238, R239

23 10.0KH 10.0K 70200174 10K--1/10W--1%--SMT--805
R146, R147, R153, R154, R156, R161,
R163, R164, R172, R173, R175, R182,
R183, R189, R191, R247, R254, R263,
R264, R272, R289, R300, R400

16 100.KH 100.K 70200194 100K OHM 1/10W 1% 805 SMT
R107, R110, R116, R119, R120, R134,
R145, R192, R199, R220, R234, R245,
R268, R271, R292, R299

3 1000R35 1000R35 70320186 1000MF----20%----35VDC--EL--T&A
C100, C103, C158

1 100FP 100FP 70240096 100FP-1/4W--5%----FP--T&R
R108

2 100R63 100R63 70320264 100MF-----20%----63VDC---EL--T&A
C116, C117

1 10KS 10K 70200051 10K--1/8W--1%----SMT
R111

2 10V16S 70300080 70300080 10MFD--+-20%--16VDC--EL--SMT
C125, C225

1 13700M 13700M 70418231 DUAL TRANSCONDUCT AMP - SMT
U101

6 150S 150 70200014 150---1/8w--5%---smt
R130, R140, R230, R240, R270, R273

4 150SN 150N 70300065 150PF-NPO-50V-5%-SMT
C105, C139, C205, C239

1 15KS 15K 70200080 15K--1/8W--5%----SM
R190

8 15S 15 70200117 15-1/4W-5%-SMT-1206
R115, R159, R215, R259, R305, R306,
R401, R402

2 180PFS 180PF 70300054 180PF----SURFACE MNT--1206 PACK
C160, C260

2 180S 180 70200015 180---1/8w--5%---smt
R132, R232

2 1MEGH 1MEG 70200177 1MEG--1/10W--5%--SMT--805
R285, R286

25 1N4001W 1N4001 70418405 1N4001 50V 1.6A DIODE SMA, SMT
D100, D102, D103, D104, D105, D106,
D107, D108, D112, D115, D119, D128,
D131, D139, D140, D142, D143, D206,
D212, D215, D219, D228, D231, D242, D243

22 1N4148W 4148 70418328 1N4148W DIODE SOD-123, SMT
CR100, CR101, D111, D116, D117, D120,
D121, D123, D124, D125, D130, D132,
D134, D135, D136, D211, D220, D221,
D224, D225, D230, D235

4 1N4744 4744 70440102 SZG40102 15V 5% ZENER DIODE
ZD102, ZD103, ZD202, ZD203

2 1N4749 4749 70466164 1N4749ARL 24.5V 5% ZD T&R
ZD100, ZD101

4 1SS142 1SS142 70400142 1ss142 250v SILICON DIODE
D110, D122, D210, D222

2 1W5 1W5 70250056 1--5W--5%--WW--AXL
R188, R288

18 2.2KS 2.2K 70200021 2.2K---1/8W--5%---smt
R101, R109, R114, R148, R151, R165,
R168, R169, R171, R176, R181, R201,
R209, R214, R248, R265, R269, R281

10 2.2R50 2.2R50 70320180 2.2MF-----20%----50VDC---EL--T&A
C109, C119, C129, C134, C144, C145,
C164, C165, C219, C229

2 2.2R50NP 2.2R50NP 70320184 2.2MF-----20%----50VDC---NP--T&A
C231, C336

2 220KS 220K 70200044 220K--1/8W--5%---SMT
R160, R185

2 220R50 220R50 70320187 220MF-----20%----50VDC---EL--T&A
C110, C115

2 220R63 220R63 70320305 220uF--63V--20%---EL--T&A
C107, C113

10 220S 220 70200016 220---1/8w--5%---smt
R127, R143, R149, R198, R227, R243,
R249, R298, R308, R310

2 220W1 220W1 70210019 220---1W----5%----MO--T&R
R290, R291

1 22KH 22K 70200169 22K--1/10W--5%--SMT--805
R103

1 22R50 22R50 70320181 22MF-----20%----50VDC---EL--T&A
C106

1 22W1 22W1 70210001 22----1W----5%----MO--T&R
R100

13 250S1W 70901856 70901856 SPCR, 1/4,R(#4),.187 SW,AL
SO001, SO002, SO003, SO004, SO005,
SO006, SO007, SO008, SO009, SO010,
SO011, SO012, SO013

4 270S 270 70200017 270---1/8w--5%---smt
R125, R129, R225, R229

2 2N5401S 2N5401 70418136 2N5401 PNP (SOT23)
Q113, Q213

6 2N6534S 6534 70418033 2N6533/34 PNP (SOT-23) XSISTOR SMT
Q104, Q105, Q112, Q123, Q212, Q223

1 2PHDRR 73719107 73719107 2 PIN .156" IIEADER VERTICAL/LOCKING
J102

8 2SA1302H 2SA1302H 70458200 200V PLASTIC PNP POWER TRANSISTOR (TAB-UP)
Q101, Q102, Q114, Q116, Q201, Q202,
Q214, Q216

4 2SA1837D 2SA1837D 70401837 PNP,TRANS,TO220,230V,IA
Q115, Q121, Q215, Q221

8 2SC3281H 2SC3281H 70468200 200V PLASTIC NPN POWER TRANSISTOR (TAB-UP)
Q107, Q110, Q119, Q120, Q207, Q210,
Q219, Q220

2 2SC3792 2SC3792 70403792 HIGH REVERSE BREAKDOWN NPN TRANSISTOR T&A
Q118, Q122

4 2SC4793D 2SC4793D 70404793 NPN,TRANS,TO220,230V,IA
Q100, Q108, Q200, Q208

1 2SC4793V 2SC4793V 70404793 NPN TRAN TO-220 230V 1A VERT
Q103

4 3.32KH 3.32K 70200202 3.32K OHM 1/10W 1% 805 SMT
R123, R141, R223, R241

2 30050 30050 70430050 SZP30050 16V 1 WATT 5% ZENER DIODE T&R

ZD104, ZD105

6 330PFSN 330PF 70300056 330PF NPO 100V 5% SMT 1206

C108, C137, C159, C208, C237, C259

1 330S 330 70200071 330--1/8W--5%---SM

R113

6 39PFH 39PF 70300087 39PF--NPO--50V--5%--SMT--805

C122, C127, C131, C140, C222, C227

4 3N3/200 3N3/200 70320308 3.3NF,200V,RADIAL POLY,5% T&A

C114, C132, C214, C232

1 3PHDRR 3PHDRR 73719111 MOLEX 3 PIN HEADER 26-64-42491

HDR100

4 4.7KH 4.7K 70200165 4.7K--1/10W--5%--SMT--805

R194, R195, R294, R295

8 4.99KH 4.99K 70200173 4.99K--1/10W--1%--SMT--805

R150, R155, R158, R166, R177, R186,
R258, R266

4 4.99KP1S 4.99kp1 70200049 4.99k--1/8W--1%---SMT

R112, R167, R212, R267

3 4560H 4560 70418053 4560 DL OP AMP SOIC-8

U100, U102, U200

5 47.5KH 47.5K 70200205 47.5K OHM 1/10W 1% 805 SMT

R144, R162, R170, R184, R193

8 4700R80 4700R80 70320371 4700UF 80VDC ELECT

C118, C123, C135, C141, C218, C223,
C235, C241

5 470PFH 470PF 70300090 470PF--NPO--50V--5%--SMT--805

C112, C128, C133, C212, C233

1 470PFS 470PF 70300047 470PF COG 50V 5% SMT 1206

C228

1 47KS 47K 70200032 47K---1/8W--5%---SMT

R293

8 47S 47 70200012 47---1/8w--5%---smt

R102, R179, R202, R279, R304, R307,
R403, R406

6 47V35S 70300079 70300079 47MFD--+-20%--35VDC--EL--SMT

C101, C104, C126, C148, C167, C168
 2 5.6W5 5.6W5 70250026 5.6--5W--10%--WW--AXL
 R187, R287
 4 5KNTC 5KNTC 70240217 5K NTC TEMPSISTOR (RADIAL)
 T102, T103, T202, T203
 4 6.8KS 6.8K 70200084 6.8K--1/8W--1%---SMT
 R122, R135, R222, R235
 4 6530S 6530 70418191 6530 SOT-23
 Q109, Q124, Q209, Q224
 8 680S 680 70200085 680---1/8w--1%---smt
 R104, R174, R204, R274, R302, R303,
 R404, R405
 2 7204 7204 70467204 SDS-7204 CASE306 NPN T&A
 Q106, Q206
 2 7205 7205 70467205 SDS-7205 CASE306 PNP T&A
 Q117, Q217
 2 7815FVRT 7815FVER 70400318 7815 15V 1A POS TO-220 RG VERT MNT INS
 VR100, VR105
 2 78L15 78L15 70400015 78L15ACP 15V 100MA REG
 VR102, VR202
 1 7915FVRT 7915FVER 70400319 7915 15V 1A NEG TO 220 RG VERT MNT INS
 VR101
 2 79L15 79L15 70400016 MC79L15 -15V VR
 VR103, VR203
 4 8.45KP1 8.45KP1 70241010 8.45K-1/4W--1%---MF--T&R
 R118, R152, R218, R252
 1 BR81D BR81D 70400081 100 VOLT-2A-BRIDGE RECT.
 D101
 1 CLIP1785 70901785 70901785 screw term, 6-32 - pcb mnt.
 GC1
 1 FUSERA 70901429 70901429 EXT. FUSEHOLDER, PC MT
 F102
 4 HIDMNI 71466214 71466214 2 TIP HID JACK NINS W/SPD
 J100, J101, J200, J201
 1 IEC-IN2 70901428 70901428 PWR INLET, RA SCREW MT PC

IEC100

4 J111S J111 70418138 J111 N-CH JFET SOT23-SMT

Q1, Q3, Q126, Q127

2 J174S J174 70418139 J-174 P-CHNL JFET 30V SOT-23

Q2, Q4

5 JMP5 JMP 70200010 0.0---1/8w--5%---smt

JMP1, JMP2, JMP100, JMP101, JMP200

4 KBU6J 70400605 70400605 6A, 600V, INLINE DIODE BRIDGE RECTIFIER

D114, D129, D214, D229

1 K1CONN12 73716730 73716730 12--SHRD HDR--2.5MM--KWANASIA

HDR101

1 LM317FV LM317FV 70400316 LM317 ADJ. REG TO220 VERTICAL

VR104

2 LM358H LM358 70418015 LM358 SMT DUAL OP AMP

U103, U203

4 MR502 MR502 70400502 MR502/1N5402 200V, 3A SILICON DIODE

D113, D118, D213, D218

4 MR752 MR752 70400752 MR752/P600D 200V, 6A SILICON DIODE

D109, D126, D209, D226

2 PC6PIN 73714951 73714951 6 PIN POWER CONNECTOR

J107, J202

1 PCMTRASW PCMTRASW 71322377 PC MOUNT PIGHT ANGLE POWER SWITCH

SW100

2 SAC187V SAC187 70400187 SAC187 200V TO220 TRIAC

SCR100, SCR200

2 SBS14 SBS14 70460014 SBS14 8V T0-92 BI-DIRECTIOAL SWITCH T&A

DI100, DI200

1 SL322R25 70250124 70250124 SURGE LIMITER 2 OHM 25A

R301

4 SPDU 73716194 73716194 .250 PC MNT SPADE .093 PCB

J103, J104, J105, J106

8 WJ10 WJ10 73713820 WR.-TO-BD. CRIMP TERM - 10GA.

WJ100, WJ101, WJ102, WJ104, WJ200,
WJ201, WJ202, WJ204

* END OF BILL OF MATERIALS REPORT *