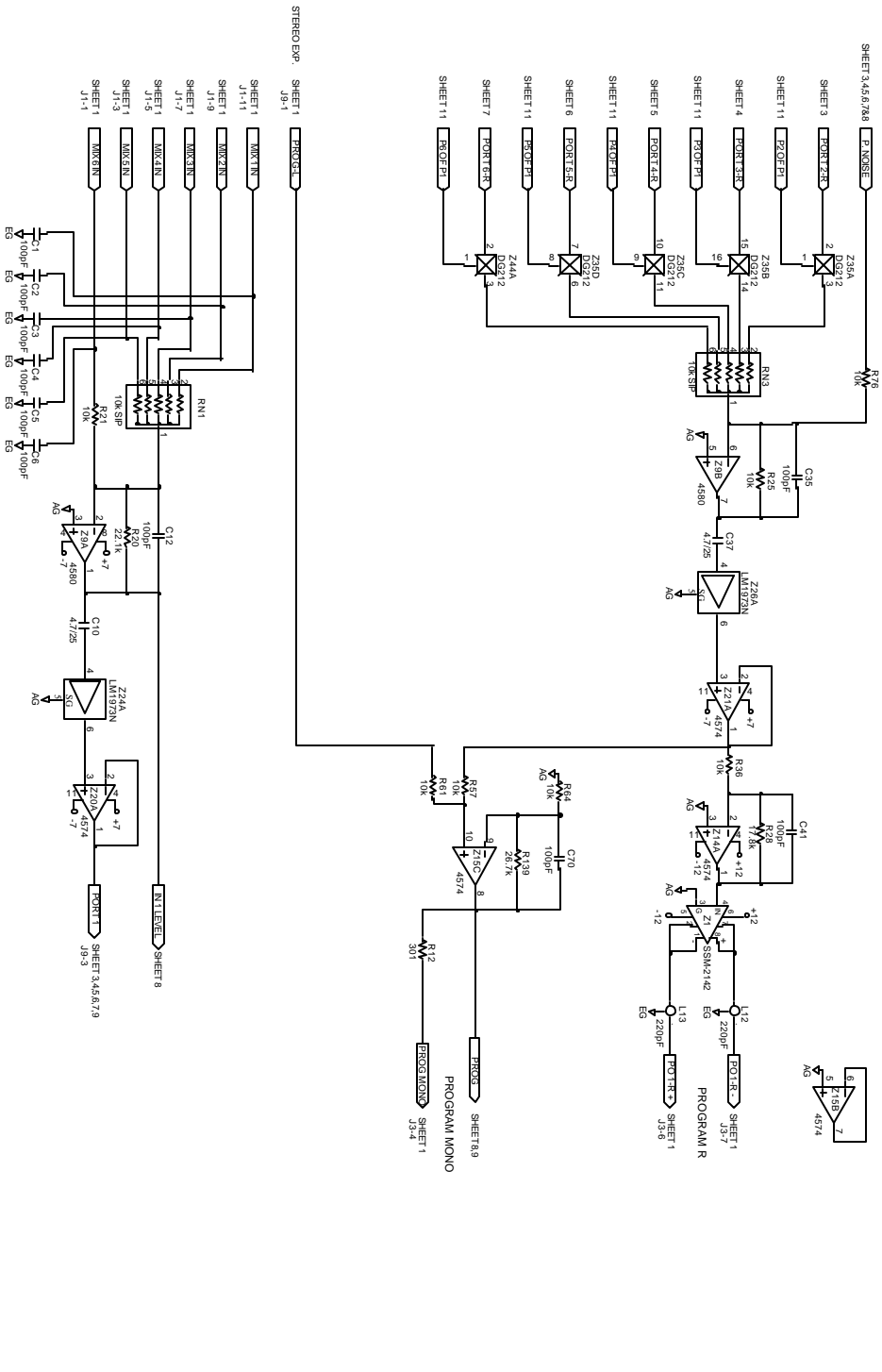






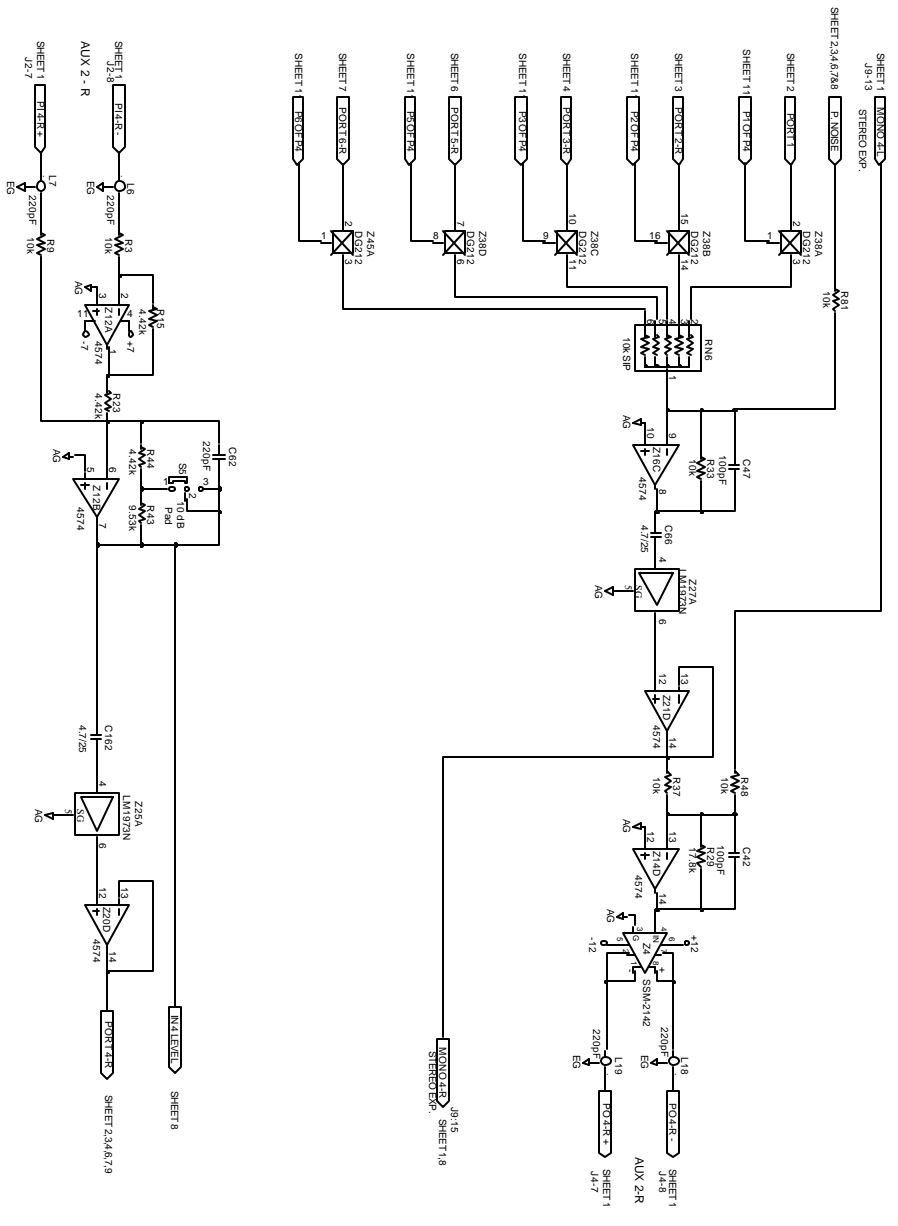


ACTION: CHANGE TO THIS SHEET  
 WAS: 103886, KRRI18JUL00  
 DRAWN BY: MS  
 CHECKED: ENS  
 10802 47th Avenue West  
 Mukden, WA 98275-5088  
**PAVANE**  
 SHEET 2 OF 12  
**PORT 1 : ROOM/PROG E08 628**





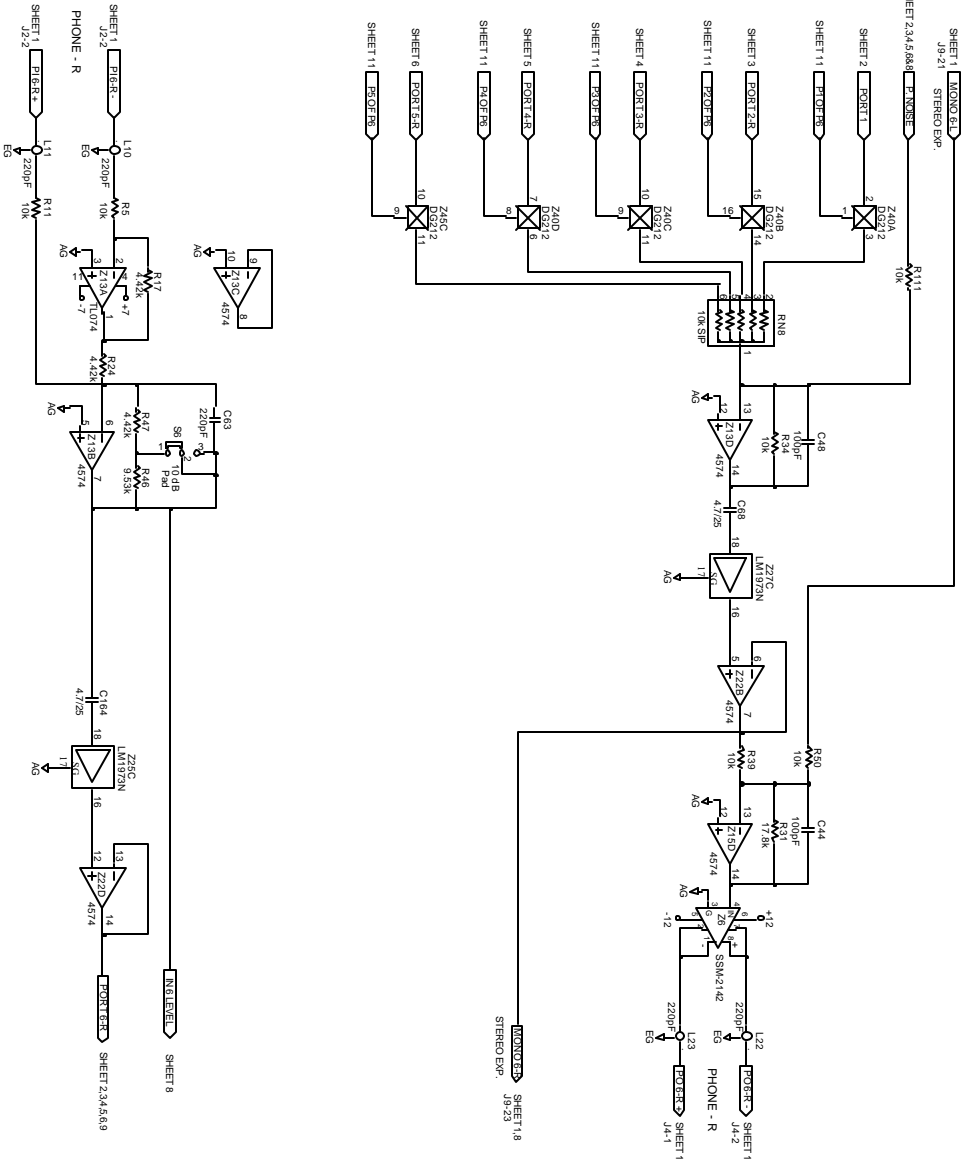




ACTION:		DRAWN BY: MS		CHECKED: ENS	
NO CHANGE TO THIS SHEET		10802 47TH AVENUE WASH		SHEET 5 OF 12	
WAS 103886, KR1810100		MARKERS WA 88275-5981		104289	
PORT 4: AUX2-R: EOB 629					

FILE: C:\P2\10\28094.SCH 6/Mar/2001



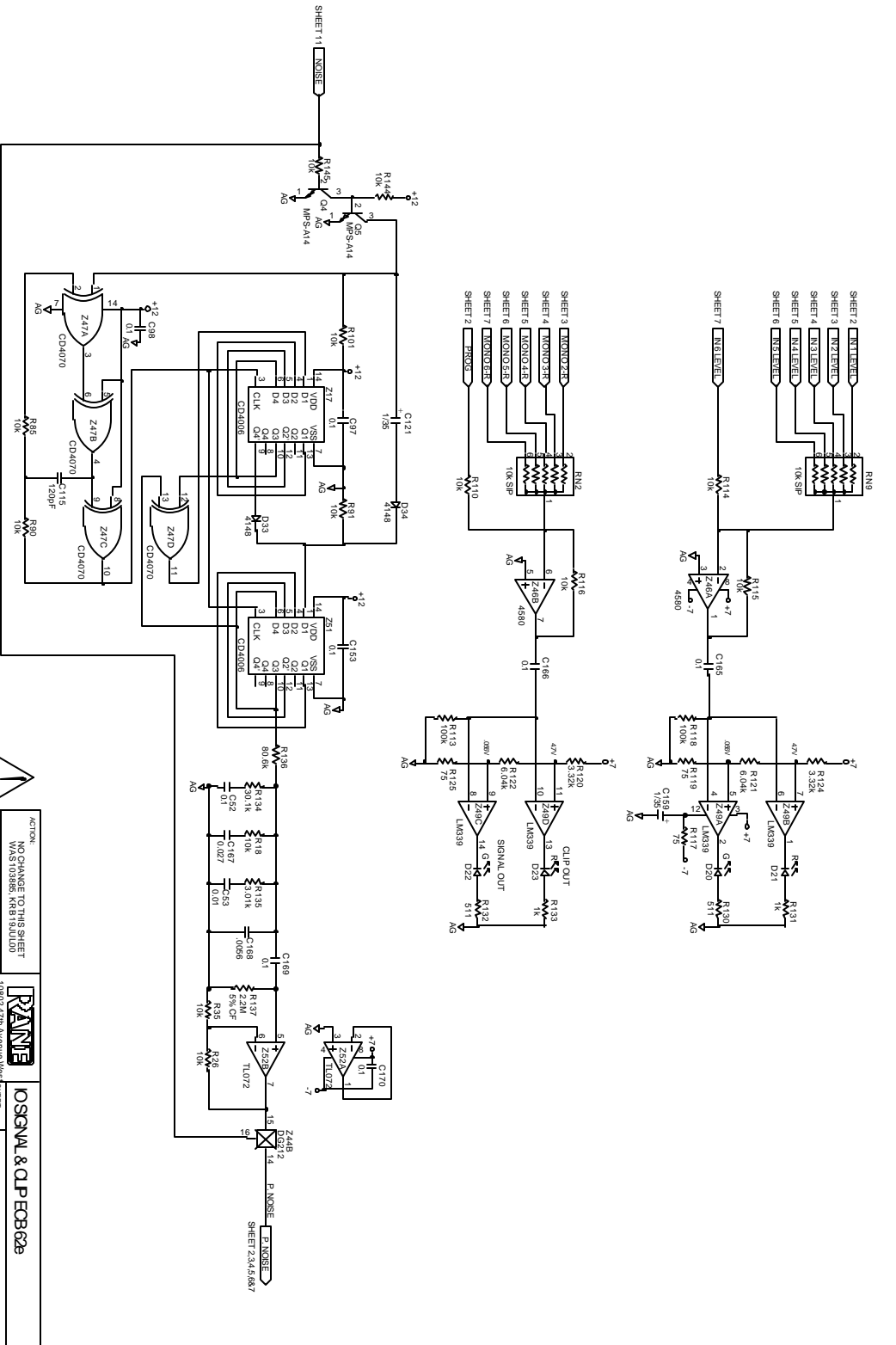


ACTION:  
NO CHANGE TO THIS SHEET  
WAS 103885, KR11810100  
DRAWN BY: MAS CHECKED: EMS

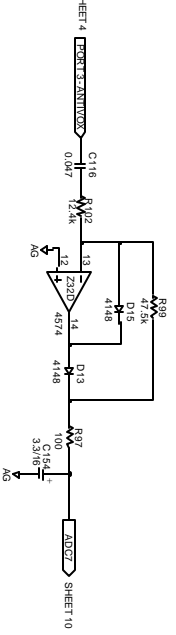
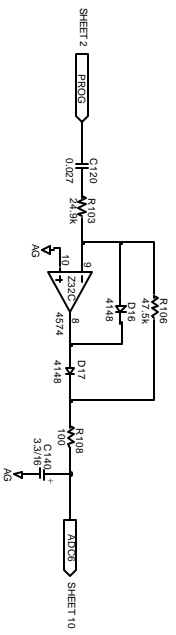
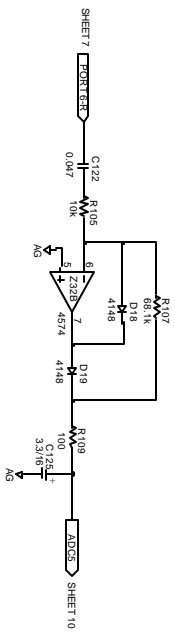
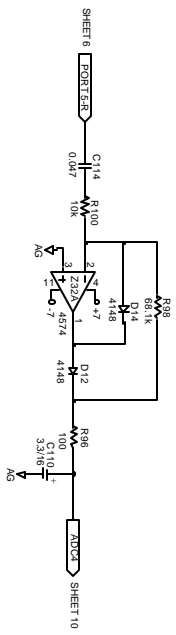
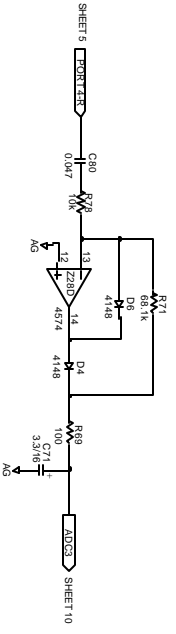
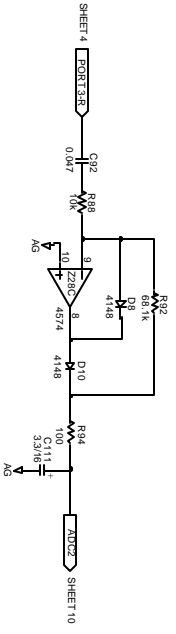
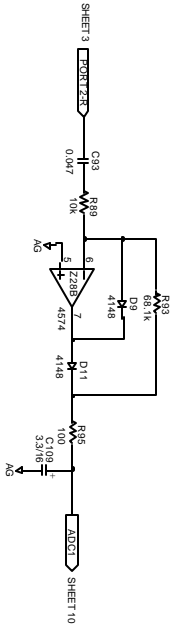
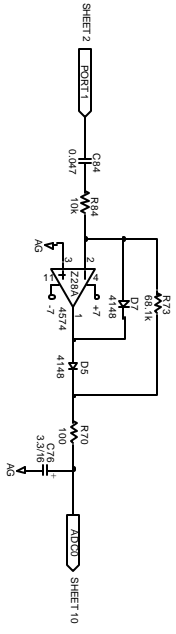
10802 47th Avenue West  
Maplewood, VA 98275-5988

PORT 6: PHONE - REOB 629  
SHEET 7 OF 12 104289

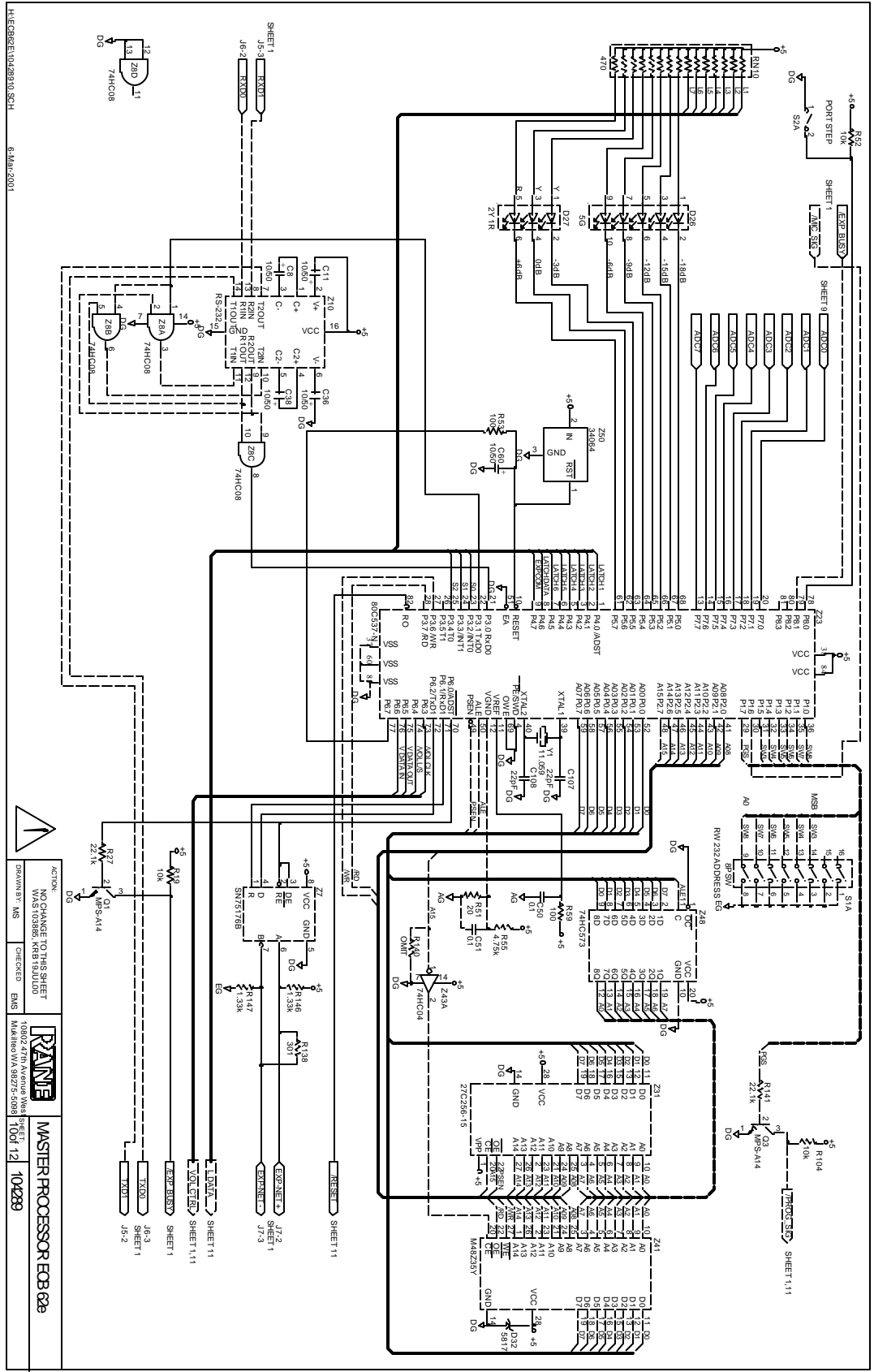




ACTION: CHANGE TO THIS SHEET WAS 103885, RFR18JUL00	CHECKED: EMS MADE WVA 58275-5888	<b>RAYNIE</b> 10802 47TH AVENUE WASH SHEET 8 OF 12 104289
---	-------------------------------------	--



ACTION: NO CHANGE TO THIS SHEET WAS 103886, KR1810100 DRAWN BY: MS	CHECKED: EMS		10802 47th Avenue West Shoreline, WA 98148 206-491-9393 9 OF 12 10/2/99
---	--------------	--	--



SHEET 1  
 SHEET 2  
 SHEET 3  
 SHEET 4  
 SHEET 5  
 SHEET 6  
 SHEET 7  
 SHEET 8  
 SHEET 9  
 SHEET 10  
 SHEET 11

10802 47th Avenue West  
 WASH 108886, KRRI 181010  
 10/2/89  
 10/2/89  
 10/2/89

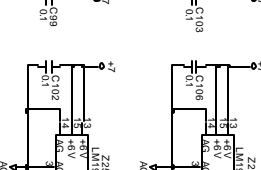
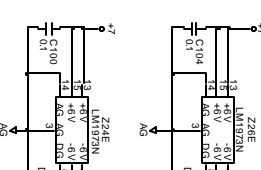
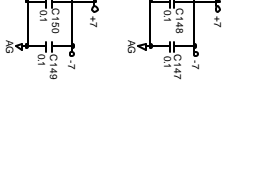
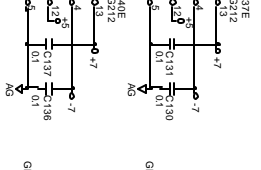
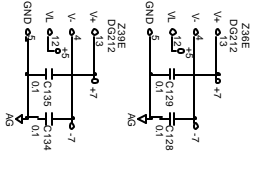
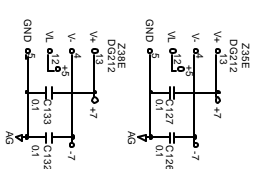
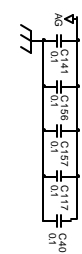
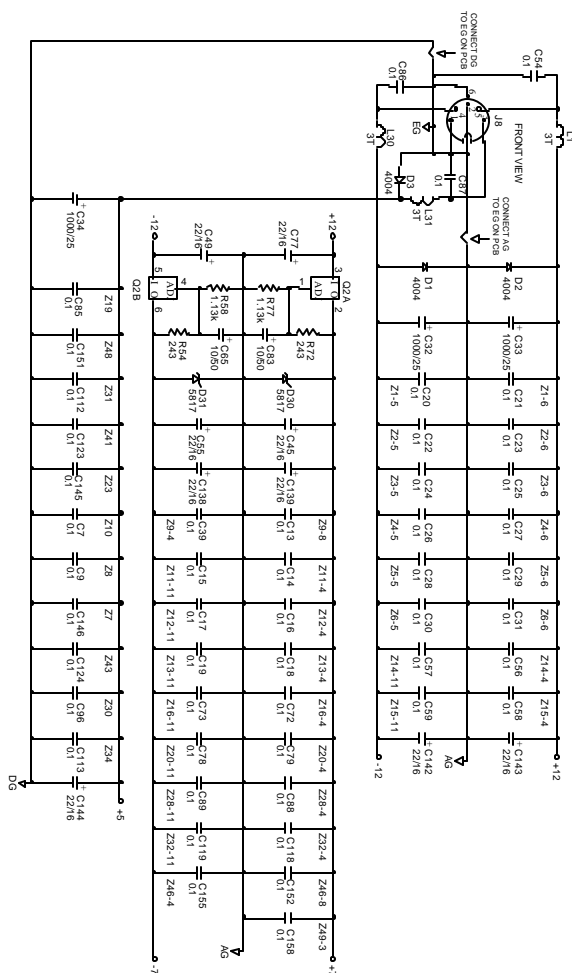
MASTER PROCESSOR EOB 029  
 10/2/89

NO CHANGE TO THIS SHEET  
 WAS 108886, KRRI 181010  
 10/2/89

ACTION  
 DRAWN BY MS  
 CHECKED EMS  
 10/2/89

10802 47th Avenue West  
 WASH 108886, KRRI 181010  
 10/2/89





ACTION: NO CHANGE TO THIS SHEET WAS 103885, KRBI 18JUL00 DRAWN BY: MS	CHECKED: EHS		10802 47TH AVENUE WASH STATE MIDWORTH WA 98275-5988	SHEET 120 12 104289	POWER SUPPLY EOB 829
--	--------------	--	--	---------------------------	----------------------