

THE RANGE ROVER

2011

The Range Rover stands alone, above all others as the flagship, as the ultimate, as the supreme luxury four-wheel drive vehicle. It stands enhanced, further extending its leadership with the world's finest interior and increases its capability, performance and economy yet again. It is peerless. The most advanced, most powerful, most complete luxury four-wheel drive vehicle is the Range Rover.



RANGE ROVER



Introduction

PAGES
1-3

The Range Rover

The ultimate in luxury, capability and performance. The ultimate in refinement. The ultimate four-wheel drive vehicle

PAGES
4-5

The new Exterior Design Pack

An even more individual manifestation of exterior style, elegance and appeal for the Range Rover in its most modern form

PAGES
6-7

The new LR-TDV8 Diesel engine

More power, improved economy, class-leading refinement, reduced emissions. The superb new LR-TDV8 Diesel engine joins the remarkable LR-V8 Supercharged engine. The all-V8 Range Rover line-up

PAGES
8-10

Autobiography

The ultimate expression of personal luxury, style and individuality

PAGE
11

On-road and off-road

Effortless on-road, legendary off-road. Technology, the command driving position. Confidence, capability and security

PAGES
12-25

Interiors

Masterful interior design and craftsmanship. The finest quality leather and veneers

PAGES
26-31

First-class Entertainment

World-class audio with 19 speakers for outstanding performance

PAGES
32-33

Specifications and choices

Models, engines, wheels, exterior and interior colours and materials

PAGES
34-49

Accessories

Adding more capability, more style and more individuality

PAGES
50-61

Our Planet

Our plan for a sustainable future

PAGES
62-63

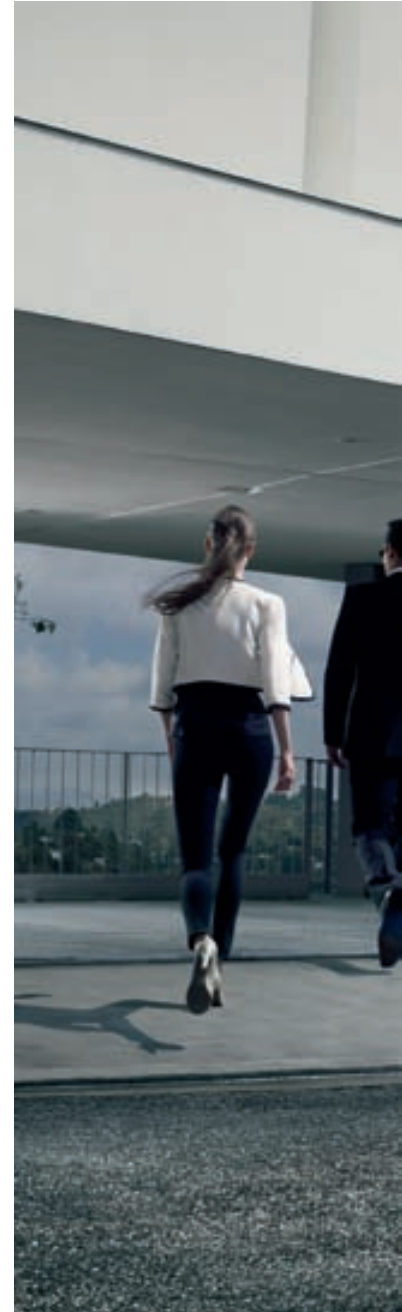


The Range Rover. The iconic Range Rover design in its most modern, most contemporary form. Iconic design expressed through unique exterior styling. A front grille and front headlamps featuring the Range Rover signature 'concentric circle' design. A 'three-stripe' LED theme on indicators and all-LED rear lamps, continued through the side vents on all models. A pure design for the front bumpers creating a wide, assured stance. Complemented with a Jupiter finish to the front grille and side vents, as well as a unique Noble-plated finish on Autobiography derivatives. Supremely gracious and utterly elegant. The Range Rover.

The imposing grille provides a commanding on-road presence.

Unique Range Rover front headlamps make optimum use of Xenon and LED technology offering 'automatic on' functionality and directional lighting.

Automatic High Beam Assist* for the headlamps detects oncoming or followed vehicles to switch between high and dipped beam.



*Automatic High Beam Assist forms part of the optional Vision Assist Pack.





The new, exclusive Exterior Design Pack. Individual. Assertive.
An even more imposing attitude that's authentically Range Rover.

Features include unique bumpers, side sills that create a deeper, wider road presence, front grille, side vents and fog lamp surrounds in Titan silver, stainless steel exhaust finishers and the option of new, stunning 20 inch Shadow Chrome Finish alloy wheels.







The new LR-TDV8 Diesel's astonishingly smooth delivery of power and torque has been described as 'like a plane accelerating down a runway'.

All new LR-TDV8 Diesel engines feature an eight-speed automatic transmission incorporating Drive Select with Paddle Shift as standard.

The new LR-TDV8 Diesel's advanced 8HP70 eight-speed automatic transmission adapts to driving style and outside conditions. It is also able to 'skip shift' (for instance, directly from eighth to third gear in one step) to improve response, performance and fuel economy. The transmission has a wider spread of ratios which results in a more relaxed 'cruising gear' while preserving 'off-the-line' and off-road performance. All this is achieved with no increase in weight and improves fuel efficiency by 15 percent.

The new LR-TDV8 Diesel has been developed as part of the Land Rover e_TERRAIN TECHNOLOGIES engineering philosophy which commits to sustainable initiatives.

Introducing the new LR-TDV8's 4.4 litres of turbocharged diesel power. The new LR-TDV8 Diesel 4.4 litre engine provides more power, new levels of refinement and better fuel economy for the most accomplished, most capable, luxury four-wheel drive vehicle in the world. This is the Range Rover's most powerful ever diesel engine. Now with a new, faster eight-speed automatic transmission incorporating Drive Select with Paddle Shift as standard. It joins the much acclaimed LR-V8 Supercharged as part of the all-V8 Range Rover line-up.

The new LR-TDV8 uses advanced technologies, including parallel sequential turbocharging. This works with the new, eight-speed transmission to improve economy by 15 percent and lower CO₂ emissions from 295 to 253g/km while making truly remarkable increases in the breadth and, utterly polished, delivery of instantaneous power and torque. The new, smooth-shifting wide ratio eight-speed transmission, with its Transmission Idle Control and advanced gear and clutch configurations, makes full use of this significant improvement. The result is 0-60mph in 7.5 seconds and the availability of 700Nm of torque all the way from 1,500 to 3,350rpm. Ceramic glow plugs improve combustion efficiency and effectively provide Press & Go start up. A reduced compression ratio of 16:1 improves engine durability. The new LR-TDV8 works in perfect unison with its new, eight-speed automatic transmission to deliver on the Range Rover promise: performance, refinement and an ultimate breadth of capability that is equally at home in the outback as it is at the opera.



Image shown is LR-TDV8.

LR-V8 Supercharged reaches unsurpassed levels of performance with a power output of 510hp and is the most powerful engine ever fitted to the Range Rover.

The 5.0L LR-V8 Supercharged Petrol engine is designed specifically with the Range Rover in mind. This engine raised the art of Petrol engine design to a whole new level and set new benchmarks for economy, refinement and performance. The lightweight engine is super-efficient and meets the stringent EU5 emissions regulations. Delivering 510PS and 625Nm, this supreme V8 engine is 29 percent more powerful than its predecessor and produces 12 percent more torque. Such massive performance allows the supercharged Range Rover to accelerate to 60mph from rest in a mere 5.9 seconds. Even more remarkably CO₂ emissions are just 348g/km, a reduction of 7.4 percent compared with its predecessor.



LR-V8 Petrol engines incorporate the Dual Independent Variable Camshaft Timing system (DIVCT) which provides increased torque at low speeds and greater power at high speeds.

Direct injection on LR-V8 engines for optimised performance and fuel efficiency.

The latest-generation supercharger on the LR-V8 Supercharged engine improves airflow for low-speed torque and high-speed power.

The LR-V8 Supercharged engine features a six-speed automatic transmission with CommandShift® for better response and smoother, more efficient gear changes. It is tuned to maximise the Range Rover's performance and capability in all conditions.



Autobiography

Autobiography is the ultimate expression of craftsmanship and exclusiveness for the interior of the Range Rover. Enveloping and cocooning driver and passengers in the finest leather, it is the definitive demonstration of the Range Rover's unique luxury.



Image shown is Supercharged.

Bespoke. The word's origins are in London's Savile Row, where cloth put aside on behalf of clients was said to 'be spoken for'.

Complementing the semi-aniline leather seats is full leather covering for the fascia, glove box lids, around the centre vents, door casings and behind the steering wheel. Even the driver's knee airbag panel is full leather.

Premium carpet mats with 2,050 gr/ms twist pile and aluminium corner protectors.

A full leather headlining swathes occupants in unparalleled opulence.

Autobiography leather is examined by hand. Fitted by hand. It's the personal touch.

The command driving position. The confidence and the security to take advantage of the Range Rover's capability on-road and off-road because the driver is perfectly placed to interact with the vehicle and the surrounding environment in a wide range of conditions. The command driving position brings a sense of control. It offers all-round visibility and a familiar sense of wellbeing, security and composure with intuitive control of all key vehicle functions. One glance at the virtual instrument panel reveals the very latest Thin Film Transistor (TFT)-LCD technology providing a revolution in the clarity of driver information. There is the subtlest mood lighting to enhance the interior ambience at night.



The 12 inch TFT-LCD virtual instrument panel uses the same technology found in high-quality computer laptops and can be both personalised and adapted to suit the driving conditions.

Steering wheel controls and switches, including two five-way toggle switches, control the In-Car Entertainment system, the TFT-LCD virtual instrument panel and numerous other vehicle feature settings.

High grade leather for the steering wheel and the addition of a Noble finish to the steering wheel spokes for extra refinement.

Voice Recognition system with simple commands to aid safe and convenient interactivity with the infotainment system.

Image shown right is Autobiography Supercharged.









The Range Rover. The finest, most capable, luxury four-wheel drive vehicle on-road in the world. It offers sublime handling and comfort courtesy of both air suspension and Land Rover's unique Terrain Response® system. The acclaimed interlinked electronic air suspension is standard across the range and copes effortlessly with a wide variety of vehicle loads and works alongside Adaptive Dynamics. Additionally Dynamic Stability Control (DSC) provides enhanced handling when accelerating or cornering and includes compensation for the towing of trailers. It constantly monitors key indicators and applies the Anti-lock Brakes (ABS) selectively to individual wheels, helping to correct deviations from the driver's chosen line. 21st century technology that gives extra peace of mind.

Enhanced Understeer Control uses the Range Rover's technologies to increase stability and help improve safety. The system recognises when the vehicle is travelling too fast to smoothly negotiate a corner, by reducing engine torque and, if necessary, applying the brakes to the appropriate wheel.

Hydraulic Rear Brake Boost works when the rear axle is heavily loaded and the ABS is triggered on the front brakes only. It increases rear brake line pressure until the ABS activates. This ensures grip is maintained regardless of vehicle loading.

Trailer Stability Assist compensates for trailer oscillations employing engine torque reduction and/or braking to help re-establish control.



RANGE ROVER

LDS 992






The Range Rover. Unsurpassed control and driveability. Terrain Response® works alongside Adaptive Dynamics. Adaptive Dynamics not only provides the best ever Range Rover experience over rough roads by fully utilising the vehicle's long suspension travel to absorb potholes or ruts, it also provides enhanced control at higher speeds while cornering or braking. Adaptive Dynamics takes the Range Rover's ride and handling to a new level.

It works by predicting the response to driver input, and monitors contact with the surface of the road 500 times a second, allowing the system to help mitigate any excessive movement, rather than a conventional system which reacts after the vehicle has already moved. From the extremely rough surface to the smoothest road, this delivers significant off-road and on-road benefits.

Terrain Response® uses a fingertip control on the centre console (and grouped in a convenient cluster with the air suspension height control, Hill Descent Control (HDC) with Gradient Release Control (GRC) and the high/low gear ratio selector) to choose settings for different driving environments.

Adaptive Dynamics predicts the response to the driver's actions and helps ensure that all occupants are transported in the greatest possible comfort and security regardless of the road surface and variations in conditions.



-  General Driving
-  Grass, Gravel, Snow
-  Mud & Ruts
-  Sand
-  Rock Crawl





The Sand Launch Control system minimises wheel spin when moving off from a standstill and helps to prevent the vehicle from 'grounding out'. Once the vehicle reaches the appropriate speed slip thresholds are increased to maintain progress.

Hill Descent Control (HDC) with Gradient Release Control (GRC) is designed to apply varied brake and accelerator pressure to help achieve acceleration gradually and more smoothly.

The Range Rover. The finest, most capable, luxury four-wheel drive vehicle off-road in the world. With an unrivalled heritage, it is packed with 21st century technology that delivers the most outstanding all-round performance and incorporates more than 60 years of Land Rover expertise. Terrain Response® remains the benchmark for off-road vehicle systems.

As well as including Sand Launch Control, traction control while braking, enhanced traction during rock crawl and Hill Descent Control (HDC) with Gradient Release Control (GRC), this technology takes yet another step forward with Gradient Acceleration Control and Hill Start Assist. Gradient Acceleration Control prevents situations where the vehicle might 'run away' on a steep gradient (and Hill Descent Control has not been selected), allowing the driver time to regain control. Hill Start Assist automatically releases brake pressure progressively on a steep gradient, helping to prevent the vehicle from inadvertently rolling backwards.



The Range Rover combines craftsmanship and luxurious internal dimensions that are complemented with an array of advanced technology features such as the availability of Touch-screen with optional dual view technology. This allows different images to be viewed simultaneously by driver and passenger. For instance, the passenger may watch a DVD while the driver maintains normal vehicle navigation information. The Touch-screen with dual view technology is accommodated in the centre control panel.

The Touch-screen with dual view technology uses 1,280 x 480 resolution, patented Parallax Barrier technology to display alternative columns of pixels to left and right-hand views, allowing driver and passenger to see different images.





Satellite Navigation is based on a Hard Disc system that facilitates more prompt retrieval of information as well as increasing reliability and accuracy and offering data upgrades from a Land Rover dealership. Graphics and information are displayed clearly along with intuitive menus for ease of use.

Breakthrough technology appears in the form of the advanced Surround Camera System*, which gives the driver five different views from points around the exterior of the vehicle.

Another cutting edge technology is the introduction of Tow Assist, a next-generation reversing aid designed to predict the rearward trajectory of both vehicle and trailer.



*Surround Camera System is available as part of the Vision Assist Pack option.



Blind Spot Monitoring* uses side-mounted radar to warn of vehicles in the driver's blind spot. A bright amber warning icon is illuminated in the appropriate door mirror when a hazard is identified.

The Range Rover has one of the most sophisticated arrays of safety aids ever built into a vehicle. Its monocoque body and integrated chassis give, thanks to the high-strength steel construction, class-leading torsional rigidity. There are seven airbags. For side impact protection there is one of the largest curtain airbags ever fitted to a passenger vehicle. There is permanent four-wheel drive with Dynamic Stability Control.

There is Hill Descent Control (HDC) with Gradient Release Control (GRC), which gives even greater control and confidence in demanding off-road conditions. And there is Blind Spot Monitoring*. This system, utilises side-mounted radar to detect other vehicles that may be obscured in the driver's blind spot. More technology. More safety systems. The Range Rover.

*Blind Spot Monitoring is available as part of the Vision Assist Pack option.





Effortless driving in demanding conditions. In addition to cruise control, which is fitted as standard, Adaptive Cruise Control (ACC) is also available. This latest generation ACC system uses 12 beams to scan the road ahead ten times every second and provides earlier identification of vehicles moving into the path of the Range Rover. One of the most advanced systems on the market, it offers more progressive deceleration and resets more accurately. It is also better able to identify smaller road users, such as motorcycles, against larger vehicles and trucks. Forward Alert and Emergency Brake Assist (EBA) complement ACC and work together to help, in the first instance, avoid a collision by giving audible and visual alerts and then, should an impact become inevitable, triggering EBA and priming the vehicle braking system.



The Adaptive Cruise Control System can be programmed to one of four settings of between a 1.0 and 2.2 second interval from the vehicle in front in normal driving conditions or when Grass, Gravel, Snow is selected on the Terrain Response® system.

RANGE ROVER

Design that is truly masterful. Renowned for the world's finest luxury interior, the Range Rover reaches even higher levels of luxury and elegance. The finest combination of veneers and leather.

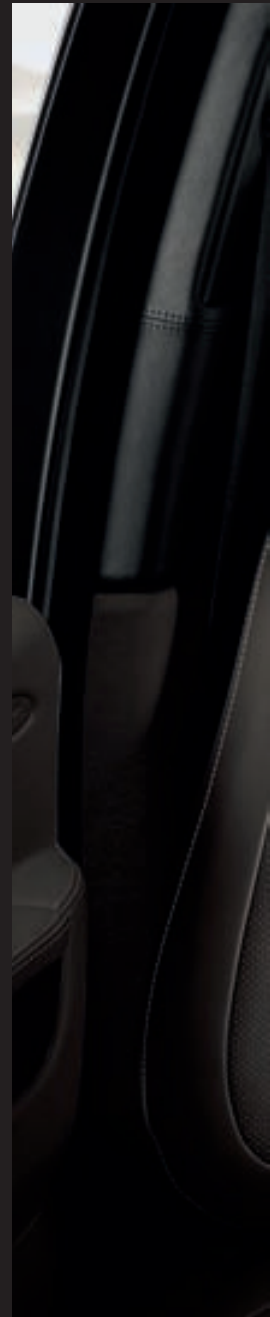


Image shown is Autobiography Supercharged.

As many as ten of the finest leather hides* cocoon all occupants in the Range Rover. A full leather headlining and a full leather covering for the fascia, as well as glove box lids, door casings, centre vents and the driver's knee airbag panel are available depending on the model.



The softest leathers from only the very highest quality hides. Hides that retain the leather's natural grain. Hides designed to improve with use and age.



*Bovine sourced







Optional reclining rear seats with four-way lumbar control, heated/cooled functionality, head restraints with lateral support.



The Range Rover's rear accommodation offers superb noise insulation and complements the recent redesign to rear seating, which increased comfort and ease of entry and exit. The option of electronically controlled reclining rear seats, offering up to eight degrees of recline, is available on certain models. This is the perfect place to travel in chauffeur-driven style, comfort and luxury, whether travelling for business or pleasure.



A new Touch-screen remote control is introduced for vehicles fitted with the Rear Screen Entertainment System. Housed in a specially designed charging docking port within the rear centre armrest, it can be easily removed for use by the occupants of any seat and provides a more intuitive, user-friendly experience.



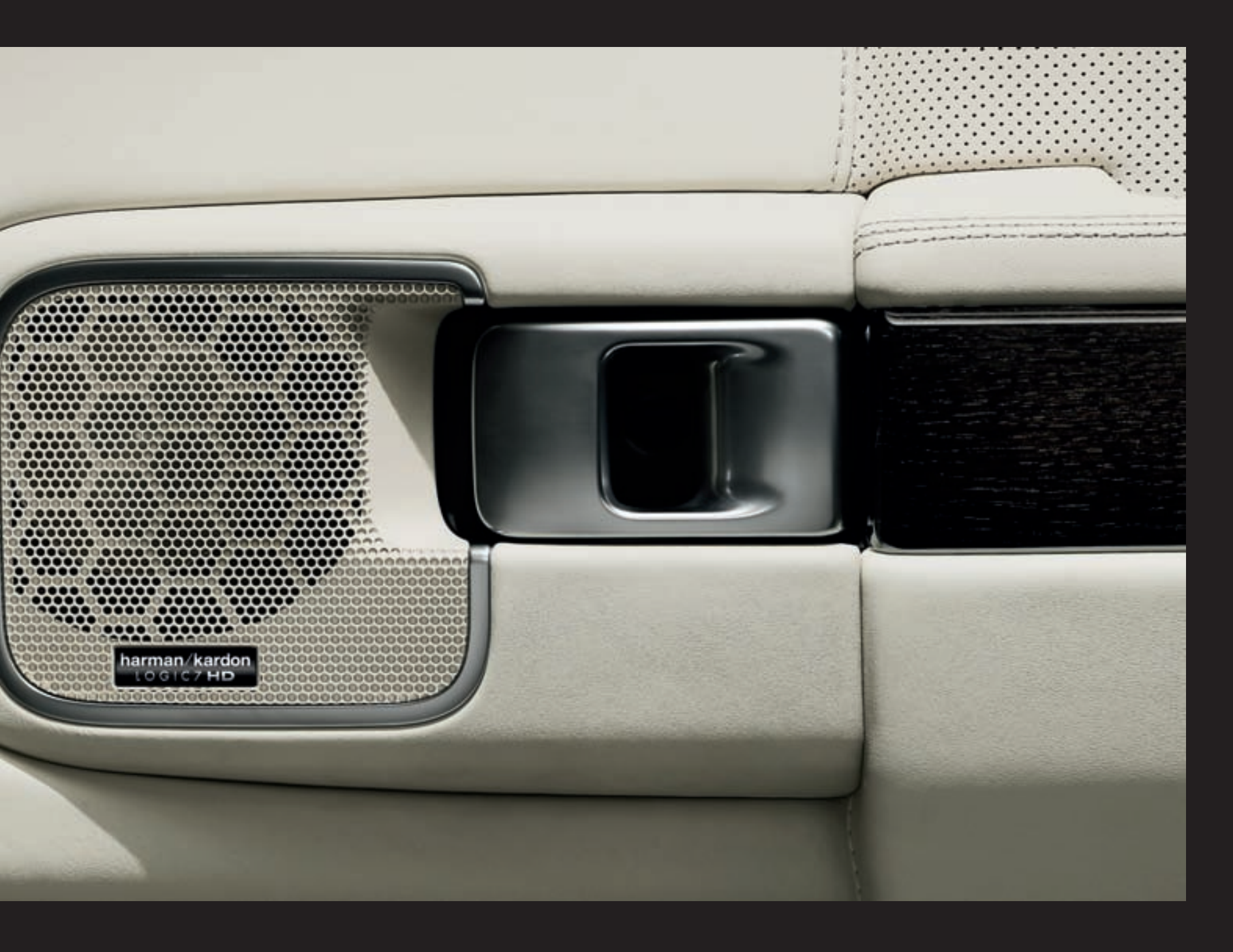
Portable Audio Interface includes a 3.5mm auxiliary socket, USB port and dedicated iPod connection.

Digital Audio Broadcasting (DAB) and HD radio options available.

A total of 19 integrated speakers, including four in the doors and one centrally-mounted in the fascia.

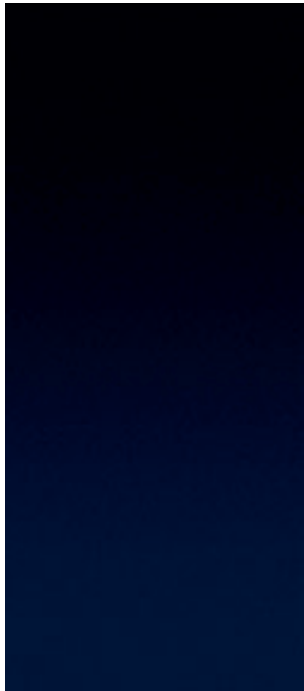
First-class entertainment. With the option to upgrade to a maximum output of 1,200W. The Range Rover houses a superb 19 speaker LOGIC7® **harman/kardon**® sound system with Portable Audio Interface that allows files from a wide range of sources to be played and controlled through the Touch-screen, while also offering the front seat passenger the opportunity to watch visual entertainment simultaneously. This world-class system uses the latest digital technology to deliver effortless performance.

harman/kardon® and LOGIC7® are registered trademarks of Harman International Industries, Incorporated. iPod is a trademark of Apple, Inc. registered in the US and other countries.

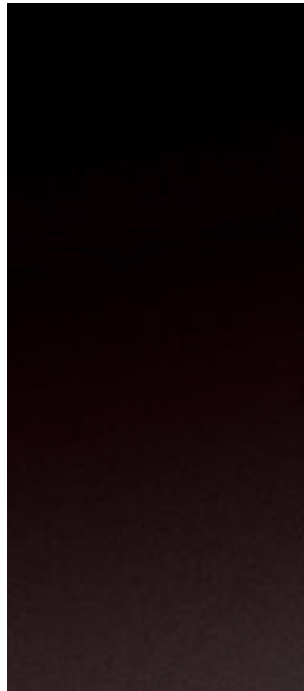


harman/kardon
LOGIC7 HD

EXTERIOR COLOUR CHOICES



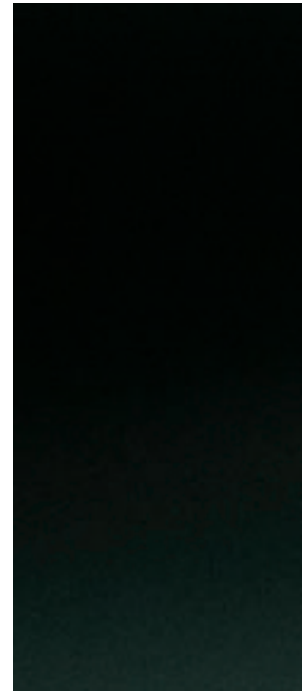
BALTIC BLUE (METALLIC)*



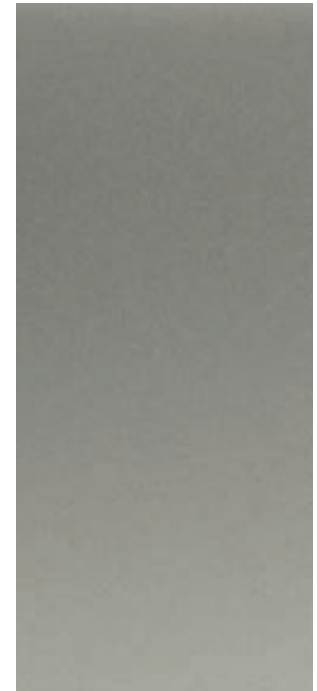
BOURNVILLE (METALLIC)



FUJI WHITE (SOLID)*



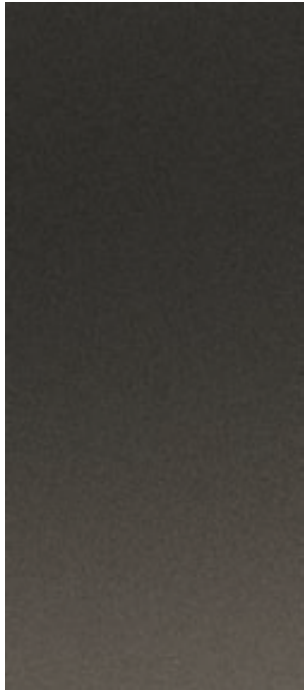
GALWAY GREEN (METALLIC)



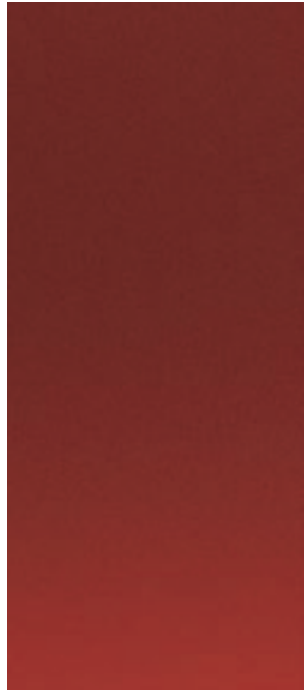
IPANEMA SAND (METALLIC)

Fuji White and Baltic Blue are two new beautiful exterior colours available on the Range Rover. An extensive range of stunning choices is available with regard to exterior colour and interior colour and trim.

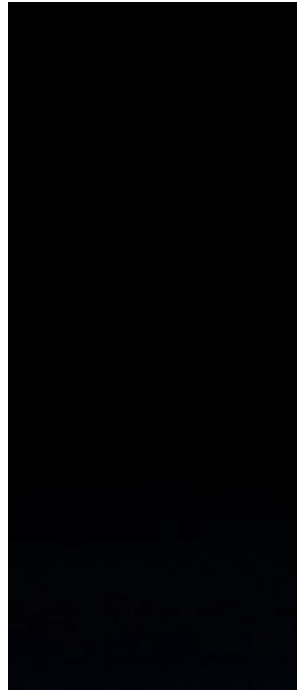
*New colours



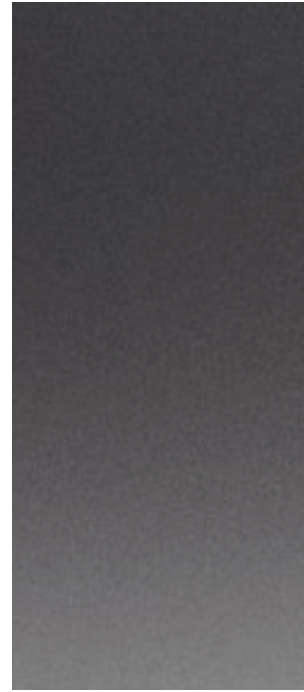
NARA BRONZE (METALLIC)



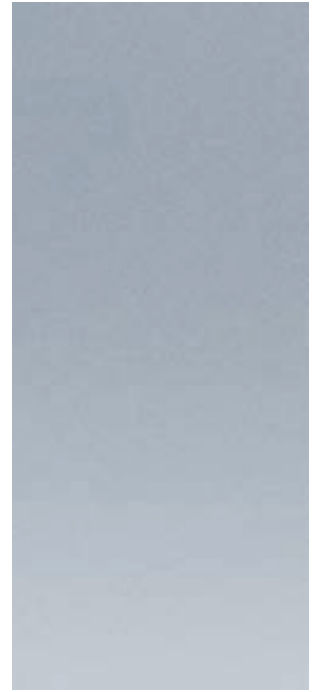
RIMINI RED (METALLIC)



SANTORINI BLACK (METALLIC)



STORNOWAY GREY (METALLIC)

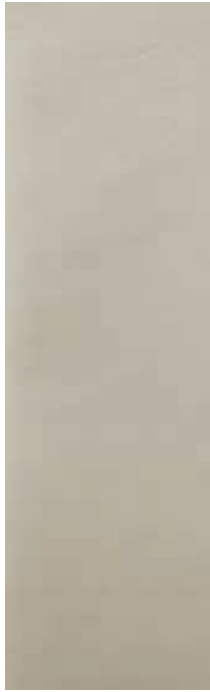


ZERMATT SILVER (METALLIC)

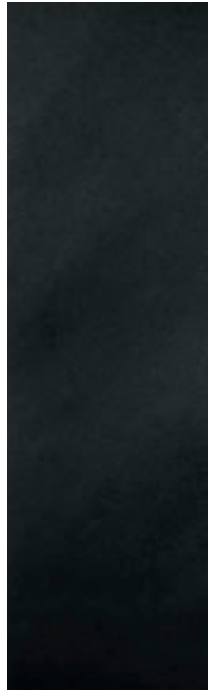
INTERIOR COLOUR CHOICES



ARABICA



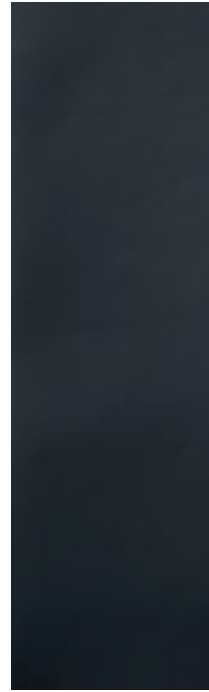
IVORY



JET



KINGFISHER



NAVY



PARCHMENT



PIMENTO



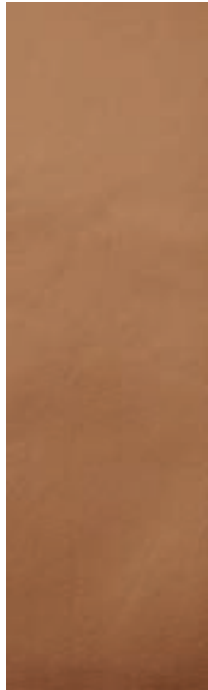
INTERIOR TRIM FINISHER



SAND



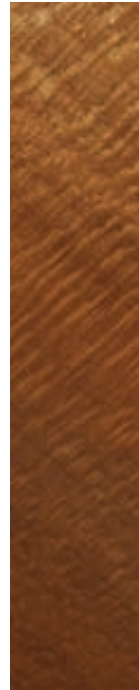
STORM



TAN



BURR WALNUT



CHERRY WOOD



GRAND BLACK
LACQUER



ASH BURL



BURR MAPLE
PRUSSIAN BLUE



LINED OAK
ANTHRACITE

COLOURWAYS

THERE IS A RANGE OF 8 SUPERB DESIGNER'S CHOICE INTERIORS.

Arabica/Ivory

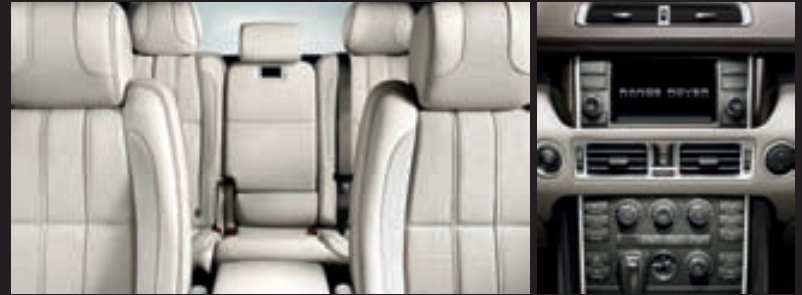


Arabica seats with Ivory stitching/Arabica carpet*

Centre console Ivory
IP/Topper Arabica

Grand Black Lacquer Finisher

Arabica/Ivory

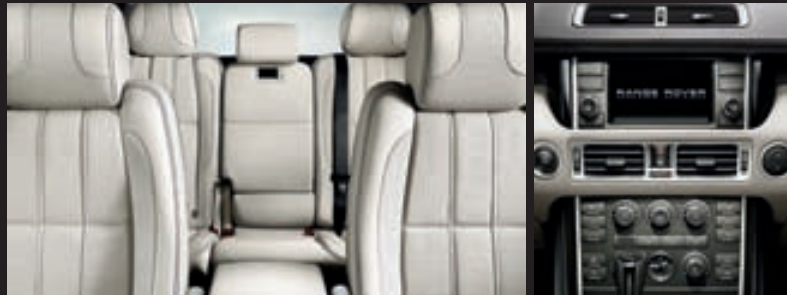


Ivory seats with Arabica stitching/Arabica carpet*

Centre console Ivory
IP/Topper Arabica

Lined Oak Anthracite Wood
Finisher

Jet/Ivory

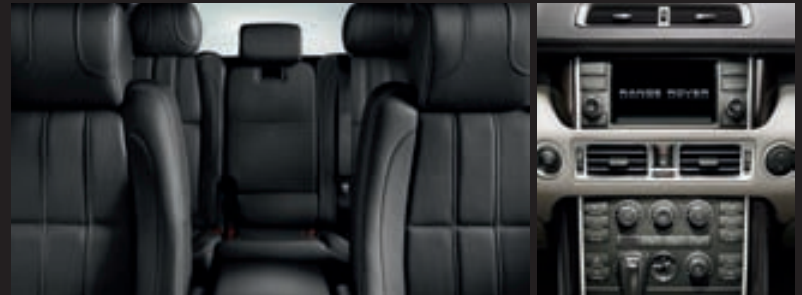


Ivory seats with Jet stitching/Jet carpet*

Centre console Ivory
IP/Topper Jet

Grand Black Lacquer Finisher

Jet/Ivory



Jet seats with Ivory stitching/Jet carpet*

Centre console Ivory
IP/Topper Jet

Lined Oak Anthracite Wood Finisher

Jet/Jet

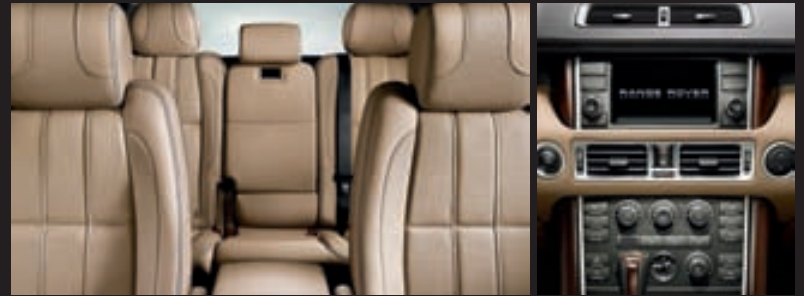


Jet seats with Ivory stitching/Jet carpet*

Centre console Jet
IP/Topper Jet

Grand Black Lacquer Finisher

Jet/Sand

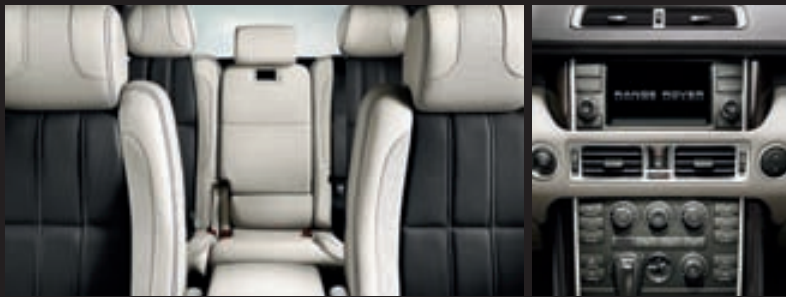


Sand seats with Jet stitching/Jet carpet*

Centre console Sand
IP/Topper Jet

Burr Walnut Wood Finisher

Jet/Ivory



Ivory/Jet seats with Jet stitching/Jet carpet†

Centre console Ivory
IP/Topper Jet

Lined Oak Anthracite Wood
Finisher

Jet/Jet



Jet/Ivory seats with Ivory stitching/Jet carpet†




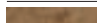






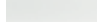


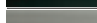


Centre console Jet
IP/Topper Jet

Lined Oak Anthracite Finisher

*Images show Semi-Aniline leather, other leather styles will vary in appearance.

†Images show Duo-Tone Semi-Aniline leather.

COLOUR & TRIM MATRIX

COLOURWAYS	JET/JET			JET/TAN	JET/ KINGFISHER	JET/IVORY			ARABICA/IVORY			JET/STORM		NAVY/PARCHMENT			NAVY/ IVORY	JET/SAND		
	JET	JET/IVORY	JET/ PIMENTO	TAN	KINGFISHER	JET	IVORY	IVORY/ JET	ARABICA	IVORY	ARABICA/ IVORY	STORM	STORM/ JET	PARCHMENT	NAVY	NAVY/ PARCHMENT	IVORY	SAND	SAND	SAND/ JET
SEAT COLOUR	JET	JET/IVORY	JET/ PIMENTO	TAN	KINGFISHER	JET	IVORY	IVORY/ JET	ARABICA	IVORY	ARABICA/ IVORY	STORM	STORM/ JET	PARCHMENT	NAVY	NAVY/ PARCHMENT	IVORY	SAND	SAND	SAND/ JET
CARPET	JET	JET	JET	JET	JET	JET	JET	JET	ARABICA	ARABICA	ARABICA	JET	JET	NAVY	NAVY	NAVY	NAVY	SAND	JET	JET
TRIM MATERIAL																				
Oxford Leather - Style 2	□	-	-	-	-	-	□	-	□	□	-	□	-	-	□	□	-	□	□	-
Semi-Aniline Leather - Style 3	□	-	-	□	□	□	□	-	□	□	-	□	-	□	□	-	□	□	□	-
Autobiography Duo-Tone Semi-Aniline Leather - Style 3*	-	□	□	-	-	-	-	□	-	-	□	-	□	-	-	□	-	-	-	□
INTERIOR TRIM FINISHER																				
 Burr Walnut	□	□	□	R	□	□	□	□	□	□	□	□	□	R	R	R	R	■	■	■
 Cherry Wood	□	□	□	R	□	R	R	R	□	□	□	-	-	■	■	■	■	R	R	R
 Grand Black Lacquer	■	■	■	■	■	■	■	■	R	R	R	■	■	□	□	□	□	□	□	□
 Ash Burl	R	R	□	□	□	□	□	□	R	R	R	□	□	■	■	■	■	-	-	-
 Burr Maple Prussian Blue	R	R	R	R	R	R	R	R	R	R	R	□	□	R	■	■	R	R	R	R
 Lined Oak Anthracite	■	■	■	■	■	■	■	■	■	■	■	■	■	□	□	□	□	R	■	■
EXTERIOR COLOUR																				
 Baltic Blue	□	□	□	R	R	■	■	■	-	-	-	□	□	■	■	■	■	□	□	□
 Bournville	□	□	R	□	□	□	□	□	■	■	■	□	□	□	□	□	□	□	□	□
 Fuji White	□	□	□	□	□	□	□	□	□	□	□	□	□	□	□	□	■	□	□	□
 Galway Green	□	□	□	□	□	□	□	□	□	R	□	□	□	-	-	-	-	■	□	□
 Ipanema Sand	■	■	R	R	□	□	□	□	■	■	■	□	□	□	□	□	■	□	□	□
 Nara Bronze	□	□	□	□	-	□	□	□	■	■	■	□	□	-	-	-	□	□	□	□
 Rimini Red	■	■	■	-	□	■	■	■	□	□	□	■	■	□	-	-	□	□	□	□
 Santorini Black	■	■	■	■	■	■	■	■	□	□	□	■	■	□	□	□	□	■	■	■
 Stornoway Grey	■	■	■	■	R	□	□	□	□	□	□	■	■	□	□	□	R	□	□	□
 Zermatt Silver	■	■	■	■	■	■	■	■	□	□	□	■	■	■	■	■	□	□	□	□

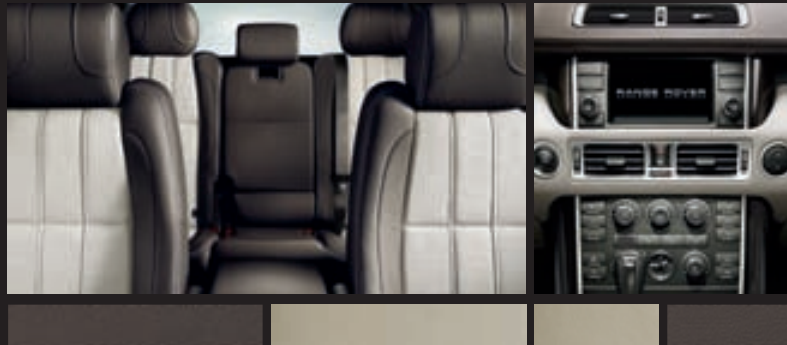
■ Combination is Designer's Choice R Combination is Recommended □ Combination is Available - Combination is Not Available

*Duo-Tone leathers are only available on Autobiography.

COLOURWAYS

A FURTHER 12 STUNNING SPECIAL ORDER INTERIORS ARE ALSO AVAILABLE.

Arabica/Ivory

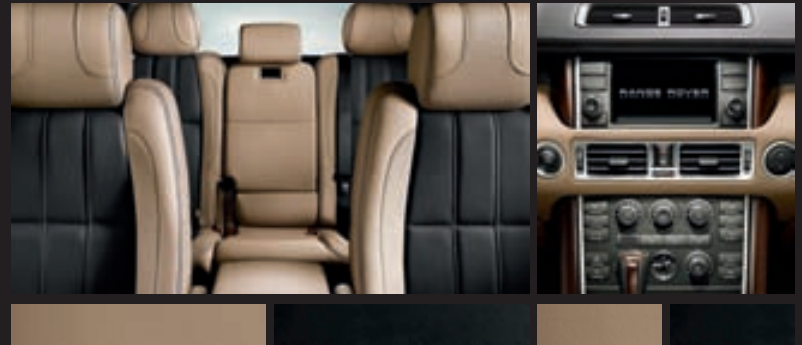


Arabica/Ivory seats with Ivory stitching/Arabica carpet†

Centre console Ivory
IP/Topper Arabica

Lined Oak Anthracite Finisher

Jet/Sand

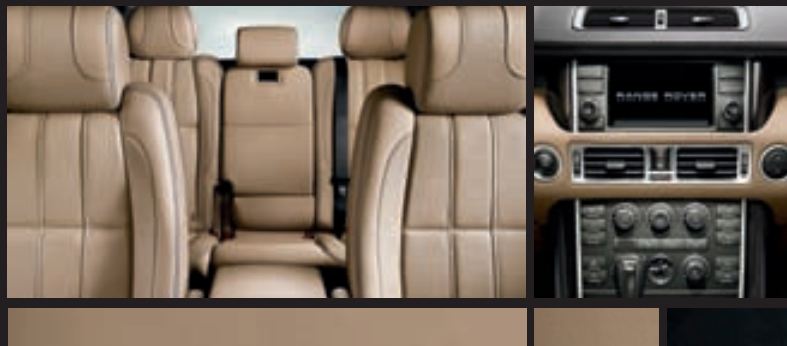


Sand/Jet seats with Jet stitching/Jet carpet†

Centre console Sand
IP/Topper Jet

Burr Walnut Wood Finisher

Jet/Sand



Sand seats with Jet stitching/Sand carpet*

Centre console Sand
IP/Topper Jet

Lined Oak Anthracite Wood

Jet/Storm



Storm seats with Jet stitching/Jet carpet*

Centre console Storm
IP/Topper Jet

Grand Black Lacquer Finisher

*Combination only available on Autobiography.
†Images show Duo-Tone Semi-Aniline leather.

COLOURWAYS

Jet/Tan



Tan seats with Jet stitching/Jet carpet*

Centre console Tan
IP/Topper Jet

Grand Black Lacquer Finisher

Jet/Kingfisher



Kingfisher seats with Jet stitching/Jet carpet*

Centre console Kingfisher
IP/Topper Jet

Burr Maple Prussian Blue Finisher

Navy/Parchment

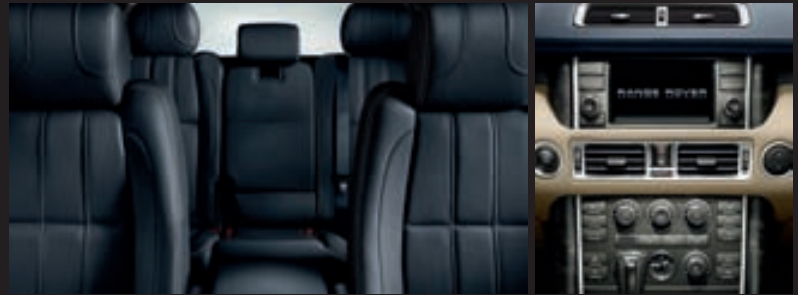


Parchment seats with Navy stitching/Navy carpet*

Centre console Parchment
IP/Topper Navy

Cherry Wood Finisher

Navy/Parchment

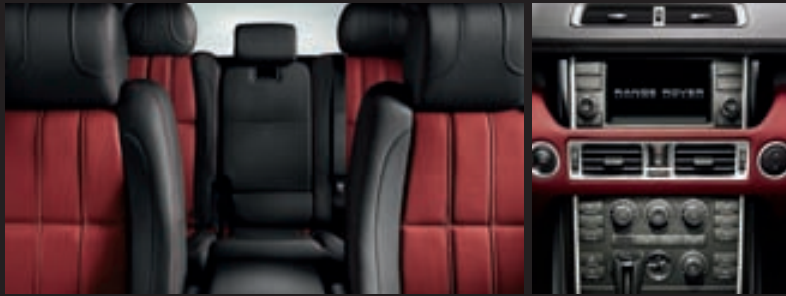


Navy seats with Parchment stitching/Navy carpet*

Centre console Parchment
IP/Topper Navy

Burr Maple Prussian Blue Finisher

Jet/Pimento



Jet/Pimento seats with Pimento stitching/Jet carpet*†

Centre console Pimento
IP/Topper Jet

Grand Black Lacquer Finisher

Jet/Storm

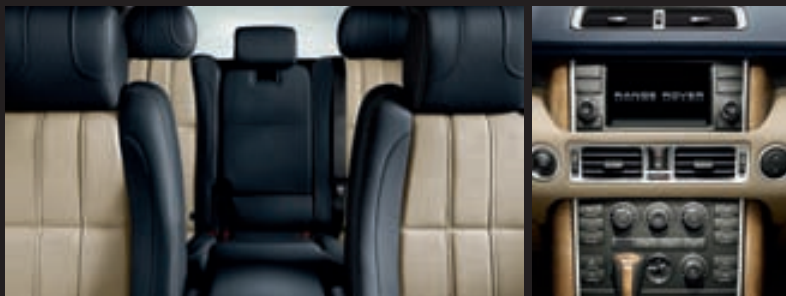


Storm/Jet seats with Jet stitching/Jet carpet†

Centre console Storm
IP/Topper Jet

Grand Black Lacquer Finisher

Navy/Parchment

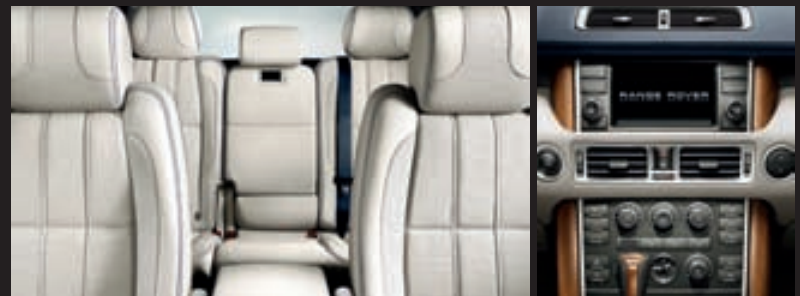


Navy/Parchment seats with Parchment stitching/Navy carpet†

Centre console Parchment
IP/Topper Navy

Ash Burl Wood Finisher

Navy/Ivory



Ivory seats with Navy stitching/Navy carpet*

Centre console Ivory
IP/Topper Navy

Cherry Wood Finisher

*Combination only available on Autobiography.
†Images show Duo-Tone Semi-Aniline leather.

The Range Rover's alloy wheels are manufactured from extremely resilient material. They are designed to enhance looks and improve handling by reducing unsprung weight, allowing the suspension to react more quickly. Not only has each one been through a series of formidable tests, to simulate on and off-road stresses, every individual wheel is also x-ray checked before delivery.



19 INCH 10-SPOKE ALLOYS
'STYLE 15'*



20 INCH 10-SPOKE ALLOYS
DECAL SILVER FINISH 'STYLE 17'†

Please note: When choosing vehicles fitted with specific wheel and tyre combinations or optional wheels and tyres, your intended use of the vehicle should be considered. Wheels with larger diameters and lower profile tyres may offer certain styling or driving benefits, but may be more vulnerable to damage, please see your Land Rover dealership for details.

*New wheel styles

†Only available as an option for TDV8 Vogue SE and Supercharged Autobiography when Exterior Design Pack is specified.

‡Not available for TDV8 Vogue SE or TDV8 Autobiography when Exterior Design Pack is specified.



20 INCH V-SPOKE ALLOYS
'STYLE 9'



20 INCH 10-SPOKE ALLOYS
'STYLE 11'



20 INCH 6-SPOKE ALLOYS
DIAMOND TURNED FINISH 'STYLE 14'



20 INCH 15-SPOKE ALLOYS
SHADOW CHROME FINISH 'STYLE 18'*



20 INCH 15-SPOKE ALLOYS
DIAMOND TURNED FINISH 'STYLE 19'†

DIMENSIONS & CAPABILITIES

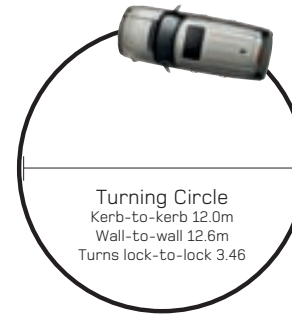


Height† 1,877mm
Front wheel track 1,629mm

†Access height air suspension setting reduces height given by 40mm to 1,837mm



Wheelbase 2,880mm



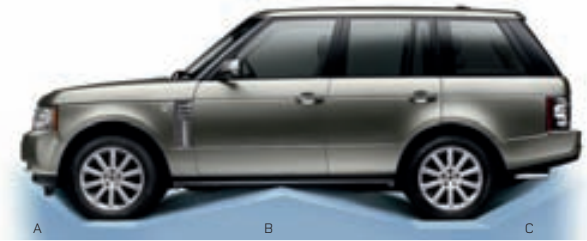
Obstacle Clearance
Ground clearance off-road height 283mm
(Standard ride height 232mm)



Rear wheel track 1,625mm
Width 2,034mm mirrors folded
Width 2,216mm mirrors out



Overall length 4,972mm



A
Approach Angle
Standard ride height 29° (22.9°)*, off-road 34° (25.4°)* to spoiler

B
Ramp Angle
Standard ride height 24.4° (22.6°)*, off-road 30° (21.9°)*

C
Departure Angle
Standard ride height 24.2° (20.2°)*, off-road 26.6° (22.4°)*
with reduced section spare wheel (to bumper)

*For vehicles fitted with Exterior Design Pack.

Luggage Capacity

Rear seats upright
Height 1,002mm Width 1,124mm
Loadspace volume 994 litres (983 litres where reclining seat specified and reclined)
Loadspace width between arches 1,040mm Length at floor 1,082mm

Rear seats forward
Height 1,002mm Width 1,124mm
Loadspace volume 2,099 litres
Loadspace width between arches 1,040mm Length at floor 1,529mm
Maximum box size (length x width x height) 1,265 x 1,024 x 815mm

Headroom

Maximum front headroom 997mm (identical for sunroof or non-sunroof vehicles)
Rear headroom 974mm



Wading Depth

Maximum wading depth 700mm

PERFORMANCE & WEIGHTS

WEIGHTS (kg)	TDV8 4.4L	V8 SUPERCHARGED 5.0L
Total (EEC kerb)	2,810	2,810
Gross Vehicle Weight	3,200	3,200
Maximum payload	375-500	375-460
Maximum roof load (including roof rack)	100	100

TOWING (kg) (towing pack optional)†

Unbraked trailer	750	750
Trailer with over-run brakes	3,500	3,500

FUEL ECONOMY* & PERFORMANCE

Urban mpg (L/100km)	24.6 (11.5)	12.5 (22.6)
Extra urban mpg (L/100km)	34.5 (8.2)	27.2 (10.4)
Combined mpg (L/100km)	30.1 (9.4)	19.0 (14.9)
CO ₂ emissions (g/km)	253	348
Maximum speed mph (kph)	130 (210)	140 (225)
0-60mph	7.5	5.9
0-100kph	7.8	6.2

*Manufacturer's data according to new government test regulations.

†If towing for commercial gain, please refer to your Land Rover dealership for information relating to digital tachograph installation.

Fuel consumption figures: The results given here do not express or imply any guarantee of the fuel consumption of any particular vehicle with which this information may be supplied. Vehicles are not individually tested and there are inevitable differences between individual vehicles of the same model. The vehicle may also incorporate particular modifications. Furthermore, the driver's style and road traffic conditions, as well as the extent to which the vehicle has been driven and the standard of maintenance, will affect its fuel consumption. Usable fuel tank capacity of 23 gallons (104.5 litres). Low fuel warning at 17 gallons (8 litres) approximately.

Dimensions & Capability

Thanks to its innovative cross-linked air suspension, the Range Rover can maintain a level ride height even over undulating terrain and be set to lower gently to ensure easy entry and exit when parked. Despite its impressive power and peerless capabilities, front and rear Park Distance Control and speed sensitive power-assisted rack and pinion steering ensure that manoeuvring in tight spots is always a simple, trouble-free operation. With up to 2,099 litres of cargo space the Range Rover again demonstrates its breadth of capability.

Performance & Weights

The Range Rover Supercharged has an impressive 0-60mph time of 5.9 seconds. Both the fuel economy and the performance are aided by the extensive use of aluminium components that include the bonnet assembly, outer door skins and inner door construction, wheels, transmission housing and front wings.

TECHNICAL SPECIFICATION

ENGINE DATA	TDV8 4.4L	V8 SUPERCHARGED 5.0L
Capacity	4,367	4,999
No. of cylinders	8	8
Cylinder layout	Longitudinal V8	Longitudinal V8
Bore (mm)	84	92.5
Stroke (mm)	98.5	93
Compression ratio (:1)	16.1 (+/- 0.5)	9.5 (+/- 0.5)
Cylinder head material	Aluminium	Aluminium
Cylinder block material	Compacted Graphite Iron	Aluminium
Ignition system	Bosch CR 32	Denso PAN PAG EMS Generation 1.6
Valves per cylinder	4	4
Maximum power kW (hp) @ rpm	230 (313) @ 4,000	375 (510) @ 6,000 - 6,500
Maximum torque Nm @ rpm	700/1,500 - 3,000	625/2,500-5,500
TRANSMISSION DATA		
Transmission type	Automatic	Automatic
Gear ratio 6th (High/Low) :1	1/2.93	0.691/2.020
5th (High/Low) :1	1.285/3.765	0.867/2.540
4th (High/Low) :1	1.667/4.884	1.143/3.350
3rd (High/Low) :1	2.106/6.171	1.521/4.460
2nd (High/Low) :1	3.143/9.209	2.340/6.860
1st (High/Low) :1	4.714/13.812	4.171/12.220
Reverse (High/Low) :1	3.317/9.719	3.403/9.960
Final Drive ratio :1	2.76	3.54
Transfer box ratio High :1	1	1
Transfer box ratio Low :1	2.93:1	2.93:1
Shift-on-the-move (mph/kph) - max High to Low	25/40	25/40
Low to High (mph/kph)	38/60	38/60
In gear speed (mph/kph) 6th High	130 (209)	140 (225)
1st High (mph/kph)	26/42	31 /50
1st Low (mph/kph)	9 /14	11/17
BRAKES		
Front Type	6 piston fixed caliper ventilated disc	6 piston fixed caliper ventilated disc
Front size (mm)	380 x 34	380 x 34
Rear Type	45 piston sliding caliper ventilated disc	45 piston sliding caliper ventilated disc
Rear size (mm)	365 x 20	365 x 20
Parking	Duo Servo	Duo Servo

FEATURES BY DERIVATIVE

4.4 TDV8 VOGUE

ENGINE & TRANSMISSION

- 4.4 litre 8 cylinder twin sequential turbocharged and intercooled diesel engine
- 8-speed automatic transmission
- 'Drive Select' rotary shift gear selector
- Paddle Shift
- Diesel Particulate Filter.

SUSPENSION & DRIVING DYNAMICS

- Terrain Response®
- Adaptive Dynamics
- Fully independent Electronic Air Suspension with variable ride height
- Hill Descent Control feat. Hill Start Assist and Gradient Acceleration Control
- Centre electronically controllable differential
- 4-channel all-terrain ABS power braking with all round ventilated disc brakes
- Advanced Emergency Brake Assist (EBA).

WHEELS

- 19" 10-spoke Style - 15 alloy wheels
- Locking wheel nuts
- Reduced size space saver spare wheel.

EXTERIOR LIGHTING

- Xenon headlamps
- LED front and rear signature lights.

EXTERIOR FEATURES

- Jupiter grille mesh finish on front grille and side vents
- Sill tread plates with Range Rover lettering.

INTERIOR FEATURES

- Memory function - driver's seat, exterior mirrors and steering wheel
- Heated front and rear seats
- Oxford leather seats
- Facia toppler panel in Belgravia leather
- Cherry Wood 12 piece wood set (Burr Wood and Grand Black Lacquer no-cost options)
- Heated leather steering wheel with memory function switches and cruise control.

COMFORT & CONVENIENCE

- Smokers pack (non-smoker's pack a no-cost option)
- Park Distance Control (PDC)
- Rear view camera with parking aid
- Rain sensing wipers and automatic lights
- Acoustic glass
- Green tinted glass
- Heated windscreen

- Headlamp power wash
- Auto dimming interior rear view mirror
- Heated powerfold door mirrors with memory function
- Volumetric alarm plus tilt sensor
- Keyless push button start
- Park heating with remote control
- Side impact beams on all doors
- Full size driver & front passenger airbags
- Driver & front passenger head & side airbags
- Driver's knee airbag
- Rear outboard passenger head airbags
- Electric sunroof.

INFORMATION, COMMUNICATION & AUDIO

- 12" TFT Virtual Instrument Panel
- Touch-screen hard disc drive navigation system including 4x4 interface and TMC and Voice Control
- Hybrid TV system
- Bluetooth® phone system
- LOGIC7® – Hi-Fi (14 speakers, surround sound harman/kardon® system)
- iPod® and USB audio connectivity interface
- Digital Audio Broadcasting (DAB) Radio.

4.4 TDV8 VOGUE SE

As 4.4 TDV8 VOGUE plus

SUSPENSION & DRIVING DYNAMICS

- Advanced Adaptive Cruise Control with forward alert.

WHEELS

- 20" 10-spoke Style-11 alloy wheels.

EXTERIOR FEATURES

- Sill tread plates, brushed finish with Range Rover lettering.

INTERIOR FEATURES

- Heated and cooled front and heated rear seats
- Perforated semi-aniline leather seats
- Jet headlining no-cost option (not available with Arabica/Navy interior)
- Cherry Wood 14 piece wood set (Burr Wood and Grand Black Lacquer no-cost options).

COMFORT & CONVENIENCE

- Auto dimming heated powerfold door mirrors with memory function
- Side loadspace nets.

INFORMATION, COMMUNICATION & AUDIO

- Homelink® garage door opener.

4.4 TDV8 AUTOBIOGRAPHY

As 4.4 TDV8 VOGUE SE plus

SUSPENSION & DRIVING DYNAMICS

- Adaptive xenon headlamps

WHEELS

- 20" Style-17 Decal Silver finish alloy wheels.

EXTERIOR FEATURES

- Autobiography badge
- Autobiography design pack including Noble finish grille, side vents and Titan finish front bumper splitter bar and fog lamp bezels, bright finish pedals
- Sill tread plates, brushed finish with Autobiography insert.

INTERIOR FEATURES

- Full leather facia
- Autobiography leather door panels
- Leather headlining including rear vanity mirrors
- Autobiography luxury floor mats with leather trim edge.

INFORMATION, COMMUNICATION & AUDIO

- Dual view touch-screen.

5.0 SUPERCHARGED AUTOBIOGRAPHY

As 4.4 TDV8 AUTOBIOGRAPHY plus

ENGINE & TRANSMISSION

- 5.0 litre Supercharged V8 petrol engine
- 6-speed automatic transmission: Stick-Shift operation featuring CommandShift® (10 8-speed automatic transmission and drive select).

WHEELS

- 20" Style-19 diamond turned alloy wheels.





ACCESSORIES

The new 2011 Range Rover offers a unique range of accessories that can add both a degree of personalisation and individual style as well as further practicality and capability. A small selection of accessories is illustrated here.

The vehicle shown left includes Fixed Side Steps, Rear Mudflaps and Bright Finish Mirror Caps and Power Vents.

The alloy wheels shown on pages 44-45 may also be available as an accessory fitment. Please see your Land Rover dealership for further details.





Automatically deployable side steps add even more personal convenience to the Range Rover and find particular favour with passengers and when the vehicle is being chauffeur-driven.

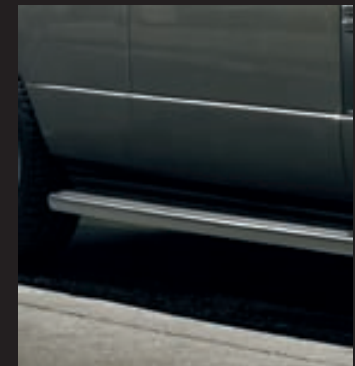
This smart, practical product helps ease entry and exit to and from the vehicle. Neatly stowed under the sills, the side steps automatically deploy as soon as a door is opened or by using the key fob then stow when the door is closed. The side steps are sensitive to obstructions and will not deploy in off-road or low range settings. Automatic mode can be overridden to allow access to the roof when the doors are closed. The deployable side steps are compatible with front mudflaps and feature a Range Rover branded tread mat.



Deployable Side Steps (deployed)*



Deployable Side Steps (stowed)*



Fixed Side Steps*

*See overleaf for part numbers and details. For vehicles with an Exterior Design Pack, the following sill mouldings must be fitted;
Right Hand LR018383
Left Hand LR018484

Also applies to Stainless and Black Steel Side Protection Tubes*. Please see your Land Rover dealership for further details.

Image left shows optional 20 inch Style 18 Shadow Chrome Wheel.



Deployable Side Steps (deployed)
(shown left) - VPLMP0041

Electronic Control Unit (ECU)*
(not shown) - VPLMP0026
2010 Model Year vehicles onwards
(not shown) - LR004028
2007-2009 Model Year vehicles only

Wiring Harness*
(not shown) - VPLMV0023
2010 Model Year vehicles onwards
(not shown) - VPLMV0022
2007-2009 Model Year vehicles only



Deployable Side Steps (stowed)



Fixed Side Steps
VUB503660
Includes integrated Front Mudflaps.



Side Protection Tubes - Stainless Steel
VUB001230

Side Protection Tubes - Black Steel
(not shown) - VUB002510

Can be fitted with or without
Front Mudflaps.



Snow Traction System
LR005737
For front 20 inch wheels only

Snow Chains
VUJ000020 (not shown)
For rear 18 and 19 inch wheels only

*Electronic Control Unit (ECU) and Wiring Harness must be ordered with deployable side steps.



Front Mudflaps
CAS500060PMA
Compatible with deployable side steps. For vehicles without Exterior Design Pack.

Front Mudflaps
(not shown) - VPLMP0046
Compatible with deployable side steps. For vehicles with Exterior Design Pack.



Rear Mudflaps
CAT500070PMA
Compatible with deployable side steps. For vehicles without Exterior Design Pack.

Rear Mudflaps
(not shown) - VPLMP0047
Compatible with deployable side steps. For vehicles with Exterior Design Pack.



Bright Finish Mirror Caps
VPLMB0041 - (Upper)
2010 Model Year vehicles onwards

Wind Deflectors
VUB000610



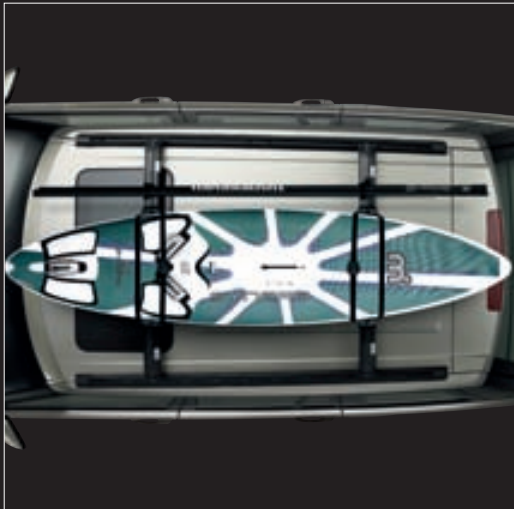
Bright Finish Power Vents
VUB503650



Roof Rails and Crossbars*
 CAB000040PMA
 Adjustable position crossbars included. Lockable for security. Load capacity 91.6kg.



Sports Bars*
 VUB502790
 Fixed position crossbars, easily removed when not in use. Aerodynamic profile. Load capacity 96.2kg. Vehicle height when fitted 1938mm.



Aqua Sports Carrier*
 LR006846
 Carries one surfboard or sailboard and mast, or one canoe or kayak. Load capacity 45kg.



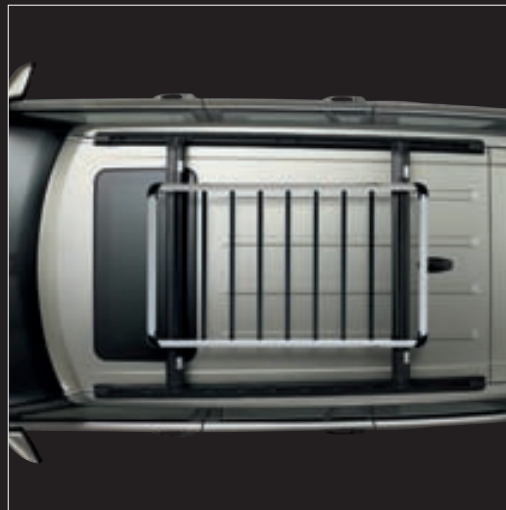
Ski and Snowboard Carrier*
 LR006849
 Lockable for security. Carries four pairs of skis or two snowboards. Incorporates slider rails for easy loading. Load capacity 36kg.



Luggage Box*

VPLDR0003

Lockable for security.
Opens from both sides.
External dimensions: 1,600mm long,
960mm wide, 410mm high.
Volume 450 litres.
Load capacity 60kg.



Luggage Carrier*

LR006848

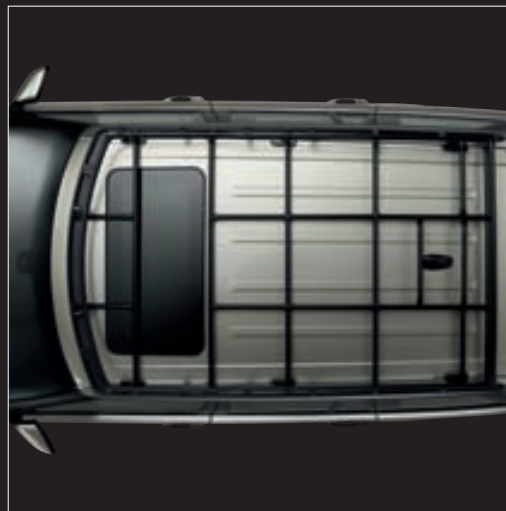
Load capacity 87kg on Sports Bars,
82.4kg on Roof Rails and Crossbars.



Sports Box*

VPLDR0002

Can be mounted on either side
of the vehicle for kerbside
opening in any country. Internal
retention system for skis or
other long loads. Lockable for
security. External dimensions:
2,300mm long, 620mm wide,
390mm high. Volume 400 litres.
Load capacity 60kg.



Expedition Roof Rack

CAB500070PMA

Load capacity 81kg.
Vehicle height when fitted 1,988mm.

Lashing Eye Kit*

VUB503160

Six additional tie down points for
use with Crossbar T-slots.

Ratchet Strap

CAR500010

Strap for securing items to the
Luggage Carrier or Expedition Roof
Rack, 5 metres long, 20mm wide.
Supplied individually.



*Roof Rails and Crossbars or Sports Bars are required for all Land Rover roof mounted accessories. Objects placed above the roof mounted satellite antenna may reduce the quality of the signal received by the vehicle and could have a detrimental effect on the navigation and satellite radio system, if fitted.



Quick Release Tow Bar*
 VUB000730
 Easily removed.
 Lockable for security.
 3,500kg trailer load capacity
 (250kg trailer nose load).



Multi-Height Tow Bar*
 VUB000720
 Offers three different towing
 height options. Lowest tow ball
 position 360mm from ground.
 3,500kg trailer load capacity
 (250kg trailer nose load).

TOURING ACCESSORIES

iPod Link Lead
 (not shown) - LR019691
 Integrates the latest iPod technology
 into the vehicle audio system.
 In addition the link lead also acts as
 a charger for your iPod device.

Bulb Kit
 (not shown) - VUB001062
 A selection of essential bulbs
 are a legal requirement in
 certain countries.
 2010 Model Year vehicles onwards

Fire Extinguisher
 (not shown) - KDB500060
 1kg powder extinguisher
 with mounting bracket.

Warning Triangle
 (not shown) - KCC500021
 Vital in emergencies and a legal
 requirement in certain countries.

First Aid Kit
 (not shown) - STC7642

Tow Strap
 (not shown) - STC8919AA
 Includes storage bag that
 can be attached as a warning
 flag to the strap. 3,000Kg
 maximum load capacity.

***Tracking Target Sticker**
 LR021589
 Required for vehicles equipped
 with Surround Camera System
 option which includes Tow Assist.



13 Pin Type Towing Electrics**
 VPLMT0007
 European style towing electrics,
 capable of supplying all trailer rear
 lighting and interior equipment power.
 2010 Model Year vehicles onwards



12N/12S Type Towing Electrics**
 VPLMT0006
 Provides all trailer rear lighting and
 interior equipment power, where
 required. Supplied as a combined kit.
 2010 Model Year vehicles onwards



Lighting Board**
 STC8153
 4 metre cable plugs into 'N' Type
 Towing Electrics socket.



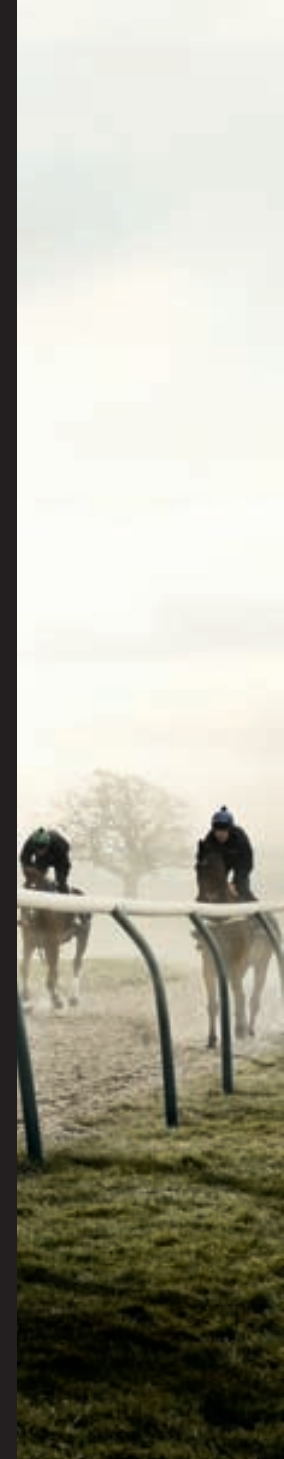
Tow Bar Armature
 VUB503960
 Towing subframe bolts to
 vehicle chassis. Accepts Quick
 Release Tow Bar, Multi-Height
 Tow Bar and Bike Carrier.
 2006 Model Year vehicles onwards



Bike Carrier
 VTG500020
 Fits directly into Tow Bar Armature.
 Holds two bikes. Upper and lower
 tailgate can be opened with carrier
 in place.

For further information on
 Land Rover bikes please go to
www.2x2worldwide.com

**Please note: These accessories are not suitable for Caravans, Trailers or Lighting Boards fitted with rear mounted LED Lamp Kits.







Load Retention Net
(shown left) - VUB000700
Includes floor net and two ratchet straps. Strap length approximately 2 metres.

Side Luggage Nets Pair
(not shown) - VUB000710



Illuminated Tread Plates
VPLMV0063
Illuminates the words Range Rover when the driver or passenger door is opened.



Loadspace Rubber Mat
LR003894
Waterproof with retaining lip and non-slip surface.



Cargo Barrier Full Height
VUB503890
Easily removed, incorporates useful integral ski hatch. Retractable Loadspace Cover can still be fitted. Complies with EC regulation 17. Not compatible with vertical blind and Rigid Loadspace Protector.

Cargo Barrier Full Height
VPLMS0039
For vehicles with Reclining Rear Seats.



Cargo Barrier Half Height
LR007320
Easily removed. Retains cargo according to EC regulation 17.

Cargo Barrier Half Height
VPLMS0040
For vehicles with Reclining Rear Seats.



Rigid Loadspace Protector
EBF000040
Complete with anti-slip mat (not shown). Easy access to tie-down points via removable grommets. Not compatible with Cargo Barrier Full Height.



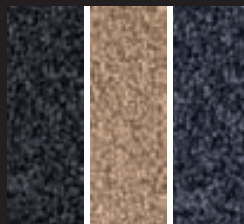
Premium Carpet Mat Set
Deep pile carpet with waterproof backing.

Arabica
(shown left) - VPLMS0068AUM

Jet
(shown right) - VPLMS0061PVA

Sand
(shown right) - VPLMS0064SUN

Navy
(shown right) - VPLMS0067JMN
2011 Model Year vehicles onwards



Arabica
(not shown) - LR008844

Jet
(not shown) - EAH500280PVA

Sand
(not shown) - EAH500280SUN

Navy
(not shown) - EAH500280JMN
2007-2010 Model Year vehicles only



Flexible Loadspace Protector
VPLMS0017
Heavy duty fabric protects loadspace up to window height. Includes protective gloves.



Rubber Mat Set
EAH500320PMA
2007-2010 Model Year vehicles only
VPLMS0084
2011 Model Year vehicles onwards



BABY-SAFE plus II infant carrier*
VPLMS0007
For babies 0-13kg (birth to approximately 12-15 months). Includes sun/wind canopy. Padded machine washable cover. Can be installed with the vehicle's 3-point seat belt or the BABY-SAFE ISOFIX Base VPLMS0008 (shown below).



DUO plus Child Seat*
LR006637
For children 9-18kg (approximately 9 months – 4 years). One-pull, height-adjustable headrest and harness. Padded machine washable cover. Forward facing on rear seat. ISOFIX system anchors the seat directly to the car's ISOFIX connection points.



Electric Cool Bag
VUP100140L
Powered by the 12 volt auxiliary socket. Thermostatically controlled temperature. Easy clean interior surfaces. Height 380mm, length 380mm, width 220mm. Volume 14 litres.



BABY-SAFE ISOFIX Base
VPLMS0008



KID plus Child Seat*
LR004940
For children 15-36kg (approximately 4 – 12 years). Seat belt guides correctly position seat belt. Three adjustable width positions. Improved side impact protection. Padded machine washable cover.

Land Rover Watch Stolen Vehicle Tracking System

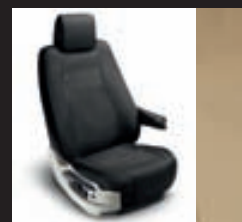
Land Rover Watch and Land Rover Trackstar are the pan-European vehicle tracking systems for Land Rover. They comply with Europe's highest insurance standards and are available in two formats: Standard and Advanced. The system constantly monitors the vehicle, so you can be assured protection is provided 24 hours a day, 7 days a week both in the UK and in European countries that have adopted the GSM mobile phone system.

Please see your Land Rover dealership for further details.



Security/Gun Box
STC8018AB
Heavy gauge steel with 2 high security locks. Internal Dimensions: 870mm long, 190mm wide, 190mm high.

Installation Kit
(not shown) VUB000750



Waterproof Seat Covers**

Jet Front Pair, Standard and DVD Headrests included
VPLMS0086PVJT VPLMS0085PVJ†

Rear Seat Set, Standard Headrest
VPLMS0088PVJT

Rear Seat Set, Winged Headrest
VPLMS0087PVJ†

Sand Front Pair, Standard and DVD Headrests Included
VPLMS0086SUN† VPLMS0085SUN†

Rear Seat Set, Standard Headrest
VPLMS0088SUN†

Rear Seat Set, Winged Headrest
VPLMS0087SUN†

*Children are safer when correctly restrained in the rear of a vehicle. Note: all seat cover patterns and colours are periodically updated.

**For 2010 Model Year vehicles onwards. Includes headrest and armrest covers. Seat shown is Jet Front with DVD headrest.

†HSE models only.

‡Vogue SE and Autobiography models only.



Our plan for a sustainable future.

We take our responsibility to our planet very seriously, with an integrated and innovative approach for a sustainable business and lower carbon world. As a company we are committed to:

Reducing our dependency on fossil fuels and the production of man-made CO₂ emissions...

Using fewer resources and creating less waste...

Enthusiasing our employees and stakeholders for sustainable business development

At Land Rover we do this by investing in four key areas:



e_TERRAIN TECHNOLOGIES. EFFICIENT POWER SYSTEMS; LIGHTWEIGHT STRUCTURES, REDUCED EMISSIONS

A joint £800m investment into new technologies designed to reduce CO₂ emissions and improve fuel consumption. We are targeting a 25 percent reduction in joint fleet average tailpipe CO₂ emissions within the next five years. Beginning with an intelligent Stop/Start system on Freelander 2 diesel manual, followed by Intelligent Power Systems Management (IPSM) with Smart regenerative braking on all Discovery 4, Freelander 2 and Range Rover vehicles, to the announcement of our new compact Range Rover, e_TERRAIN TECHNOLOGIES form a fundamental part of our carbon management plan.

Freelander 2 eD4 models with intelligent Stop/Start now have 158g/km CO₂ emissions



SUSTAINABLE MANUFACTURING. USING FEWER RESOURCES AND CREATING LESS WASTE

World class manufacturing facilities, certified to ISO14001 since 1998. As a company we are targeting a 25 percent reduction in operating CO₂ emissions by 2012, 25 percent in waste to landfill and 10 percent in water consumption, based off 2007 levels. Going forward we are measuring our total operating carbon footprint and setting targets to reduce it; since 2006 this integrated approach has included the carbon offset of all manufacturing assembly CO₂ emissions from our Solihull and Halewood plants. But it doesn't stop there. Every new vehicle is designed to be 95 percent recoverable and reusable – with 85 percent that's recyclable and a further 10 percent that can be used to generate energy.

In 2009, we reduced our CO₂ emissions by 26,550 tonnes, water consumption by 192,000 m³ and 1,300 tonnes to landfill



CO₂ OFFSETTING. INVESTING IN RENEWABLE ENERGY, TECHNOLOGY CHANGE AND ENERGY EFFICIENCY PROJECTS

For every tonne of CO₂ emitted during the manufacturing assembly of all our vehicles, Land Rover invests in carbon reduction projects that reduce an equivalent tonne of CO₂ elsewhere. In addition, we enable our customers to offset their first 45,000 miles/72,000 km of driving in their new vehicles. We do this in the UK as well as countries in Europe, the Middle East and Asia. Independently administered by ClimateCare and governed by a body of climate change experts, CO₂ offsetting allows us to take action now, to reduce our impact on the environment as part of our integrated carbon management plan.

Land Rover currently has 19 emissions reduction projects in our plan to offset approximately 2,500,000 tonnes of CO₂ by 2012...

Our customers in the Middle East have contributed over \$1,650,000 to this target since October 2008...

We have three Gold Standard projects in the portfolio: energy efficient stoves in Uganda and Ghana and wind generation in Aliaga Turkey



CONSERVATION AND HUMANITARIAN PARTNERSHIPS. WORKING PARTNERSHIPS FOR CONSERVATION & SOCIETIES GAIN

Our vehicles are designed for purpose, so are used by conservation and humanitarian organisations worldwide. Working with our five Global Conservation partners and the International Federation of Red Cross and Red Crescent Societies (IFRC), Land Rover is proud to support the important work of the Royal Geographical Society (with IBG), The Born Free Foundation, Earthwatch Institute, Biosphere Expeditions and the China Exploration and Research Society.

As part of our Sustainability policy Land Rover has actively promoted responsible off-road driving since 1990...

This year Land Rover launched a new three-year global initiative with the IFRC entitled 'Reaching Vulnerable People around the World' through which Land Rover aims to support IFRC's life saving work. To date Land Rover has given over £2.5m worth of support to IFRC, including vehicle donations and funds raised

To find out more visit landrover.co.uk/ourplanet



IN SUPPORT OF



International Federation of Red Cross and Red Crescent Societies

www.landrover.co.uk

LAND ROVER FINANCE Land Rover finance offers a wide range of competitive finance and insurance plans, developed exclusively for Land Rover owners and tailored to meet all your individual requirements*. With Land Rover Finance you are dealing with people who have a close working relationship with your local dealership and who are as passionate about Land Rover as you are. Your Land Rover dealership will match your personal or business requirements to the most appropriate finance plan, provide you with quotations and process your application.

WARRANTY Every new Land Rover supplied by Land Rover UK comes with a standard three year unlimited mileage warranty. Please apply to your dealership at the time of purchase for full details of the manufacturer's terms and conditions.

*Finance is subject to status and conditions. Available to over 18's in the UK only.
Guarantees/indemnities may be required. Certain categories of business user may be excluded.

IMPORTANT NOTICE: This publication is intended for use in the United Kingdom and whilst Land Rover take the utmost care in ensuring that all details in the publication are correct at the time of going to press, we are constantly striving for improvement and therefore reserve the right to alter specifications and equipment without notice. Details of specifications and equipment are also subject to change to suit local market conditions and requirements, and not all products are available in every market. Some vehicles are shown with accessories or optional equipment fitted.

All Land Rover Approved Accessories fitted by a Land Rover dealership within one month or 1,000 miles/1,600 kilometres (which ever occurs first) of the handover of a new registered vehicle will benefit from the same warranty terms and period of cover as the vehicle warranty. Accessories purchased outside of these parameters will be subject to 12 month unlimited mileage warranty. All Land Rover Approved Accessories are rigorously tested to the same exacting standards as those applied to our vehicles. Performance in extreme hot and cold temperatures, corrosion resistance, impact and airbag deployment highlight some of the exhaustive product testing carried out to ensure accessories are both durable and importantly, continue to comply with current legislation. All our accessories are designed to be an integral part of Land Rover vehicles. While many items such as roof carriers are simple to fit, some products require specialist tools and diagnostic equipment to ensure correct integration with the vehicle structure and electrical systems. These products vary from market to market, please consult your Land Rover dealership who will be pleased to advise you on current specifications and any query you may have. Distributors and dealerships are not agents of Land Rover and have absolutely no authority to bind Land Rover to any express or implied undertaking or representation.

The colours reproduced here are subject to the limitations of the printing process and may therefore vary slightly from the actual vehicle. The company reserves the right to alter or withdraw any colour finish without notice. Some of these colours may not be obtainable in your country. Please check availability of colours and current specifications with your Land Rover dealership. Distributors and dealerships are not agents of Land Rover and have absolutely no authority to bind Land Rover to any express or implied undertaking or representation.

LAND ROVER Registered Office:
Banbury Road, Gaydon, Warwick CV35 0RR
Registered in England and Wales: Number 4019301
www.landrover.co.uk



BY APPOINTMENT
TO HM THE QUEEN
MANUFACTURERS OF
LAND ROVER VEHICLES
LAND ROVER, WARWICK



BY APPOINTMENT
TO HRH THE DUKE OF EDINBURGH
MANUFACTURERS OF
LAND ROVER VEHICLES
LAND ROVER, WARWICK



BY APPOINTMENT
TO HRH THE PRINCE OF WALES
MANUFACTURERS OF
LAND ROVER VEHICLES
LAND ROVER, WARWICK

RANGE
ROVER