

DMM4020, DMM4040, and DMM4050 Connectivity Installation Manual



DMM4020, DMM4040, and DMM4050
Connectivity
Installation Manual

Copyright © Tektronix. All rights reserved. Licensed software products are owned by Tektronix or its subsidiaries or suppliers, and are protected by national copyright laws and international treaty provisions.

Tektronix products are covered by U.S. and foreign patents, issued and pending. Information in this publication supersedes that in all previously published material. Specifications and price change privileges reserved.

TEKTRONIX and TEK are registered trademarks of Tektronix, Inc.

Contacting Tektronix

Tektronix, Inc.
14200 SW Karl Braun Drive
P.O. Box 500
Beaverton, OR 97077
USA

For product information, sales, service, and technical support:

- In North America, call 1-800-833-9200.
- Worldwide, visit www.tektronix.com to find contacts in your area.

Table of Contents

Introduction to DMM Connectivity 1
USB-to-RS232 Serial Cable Installation 1

Introduction to DMM Connectivity

You can connect the digital multimeter (DMM) to the USB port on your MS-Windows personal computer (PC) through the USB-to-Serial cable that comes standard with your DMM. The serial end of the cable attaches to the RS-232 port on the rear panel of the DMM, and the other end plugs into a USB port on the PC.

You can connect to a PC with a serial port through the serial port on the rear-panel of the DMM.

You can connect to a PC with IEEE-488 capability through the IEEE-488 port on the rear panel of the DMM4040 or DMM4050.

The USB port on the front panel of the DMM4040 or DMM4050 is for USB memory devices, not for connecting to a remote PC.

USB-to-RS232 Serial Cable Installation

To use the cable, you need to install the USB-to-RS232 drivers on your PC. This allows the USB-to-RS232 cable to communicate between the DMM and the PC. To install the drivers, use the Documentation Browser CD, or plug in the USB-to-RS232 adapter and use your PC Wizard to locate and install the drivers.

On the DMM4040 or DMM4050 DMM, after you install the drivers, you can select and set up an interface port by pushing the front-panel instrument setup key, labelled **Instr Setup**, then pushing the buttons under the display with the resulting labels **Select Port**, **Port I/F** and **RS-232C** (highlighted when selected).

Installation Instructions for the USB-IR Optical Serial Cable

Revision: II

Version: v1.0.2176 for WinXP/2K

v1.09.06 for WinME/98

1. **PC Requirements.** To use the USB-IR serial cable, your Windows PC must meet the following requirements:

- a) Have an available USB port on the PC, or on a USB Hub connected to the PC.
- b) Your PC must be running one of the following versions of Windows:
 - Windows XP (Home or Professional)
 - Windows 2000
 - Windows ME
 - Windows 98 Second Edition (only the Second Edition of Windows 98 supports USB)

If you have a later version of Windows, you can check online at: www.tektronix.com for an updated list of compatible versions.

The USB-IR serial cable is not supported on Windows 95, Windows NT, or Windows 98 (original edition) operating systems, which do not support USB.

c) To install the drivers for the cable on Windows XP or Windows 2000, you must be able to login to Windows with Administrator privileges.

2. Installing the USB-IR Cable Drivers.

a) If your PC is running Windows XP or Windows 2000, log into an account with Administrator privileges.

b) Plug the USB side of the USB-IR serial cable into an available USB port on your PC, or into a USB hub connected to your PC. Plug the serial side into the RS-232 port on the rear panel of your DMM.

c) Windows will respond that it has *found new hardware*, and the Windows Hardware Wizard dialog will appear.

d) Follow the instructions from the wizard to install the new hardware.

e) For a detailed installation guide, follow the **Installation Guides** link provided on the Documentation Browser CD.

f) For automatic downloading of the latest driver from the Internet, allow Windows XP or Windows 2000 to search Microsoft Windows Update for updated software when asked.

To load the drivers from the Documentation Browser CD supplied with the cable, select **Specific Location** to install the drivers from the CD.

g) The Hardware Wizard will find the FT232R USB UART driver and install the USB Serial Converter.

h) Additionally, the Windows *found new hardware* wizard will run again to install the USB Serial Port.

i) The Hardware Wizard will finish.

The USB-IR cable drivers have now been installed on the PC. On some systems, you may need to reboot the PC once following the driver installation before you can use the USB-IR cable.

3. Determining the USB-IR Cable's COM Port. Once you have installed the USB-IR cable drivers and assigned a virtual COM port to your USB-IR cable, you can use this COM port to perform serial communications over your USB-IR cable.

To find out which COM port is associated with your cable, do the following:

a) Ensure that you have attached the cable to the PC, or to a USB hub connected to your PC.

b) Go to the Windows Control Panel. Open the **System** applet. This brings up the **System Properties** dialog box.



c) Open the **Device Manager**:

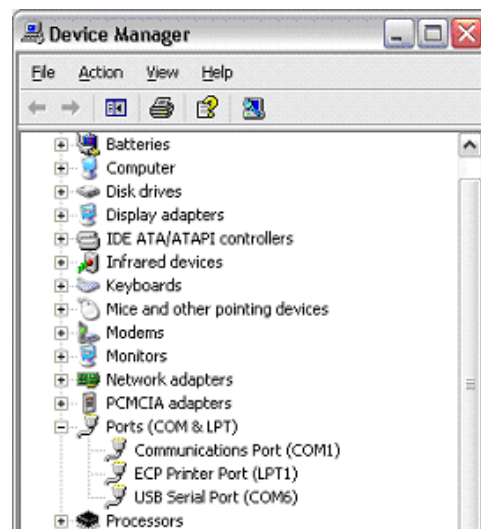
- On Windows 2000 and Windows XP, click on the **Hardware** tab of the **System Properties** dialog box. Then click on the **Device Manager** button.



- On Windows 98 SE and Windows ME, this is a tab named **Device Manager** on the **System Properties** dialog box.

d) On the **Device Manager** dialog box, look under the **Ports (COM & LPT)** tree.

The COM port associated with the USB-IR cable is listed there as **USB Serial Port (COM n)**.



4. **Changing the COM Port #.** Some programs require COM 1, COM 2, COM 3 or COM 4, and the USB-IR cable is sometimes installed as COM 5. To change the assigned COM port number, do the following:

a) Open the **Device Manager** by doing the following:

- On Windows 2000 and Windows XP, click on the **Hardware** tab of the **System Properties** dialog box. Then click on the **Device Manager** button.
- On Windows 98 SE and Windows ME, this is a tab named **Device Manager** on the **System Properties** dialog box.
- b) On the **Device Manager** dialog box, look under the **Ports (COM & LPT)** tree.
- c) Click on the **Port Settings** tab. Click on the **Advanced** button.
- d) On the bottom left side, pull down the bar and select **COM 1**, **COM 2**, **COM 3** or **COM 4**. NOTE: Choose one that does not say *in use* next to it. Click **OK**.
- e) Click **OK** again. Notice that the device will show up as being on the same COM port that it was before (i.e., COM 5), but will show up on the new port if you close the Device Manager and open it again.
- f) Close the **Device Manager**. Your serial device should work properly.

5. **Uninstalling the Driver.** When un-installing the driver from Windows, always use the **Add/Remove Programs** utility as this uses the driver uninstaller program to remove files and registry entries to leave a clean system. Other methods may leave fragments of the driver, which may interfere with future installations.