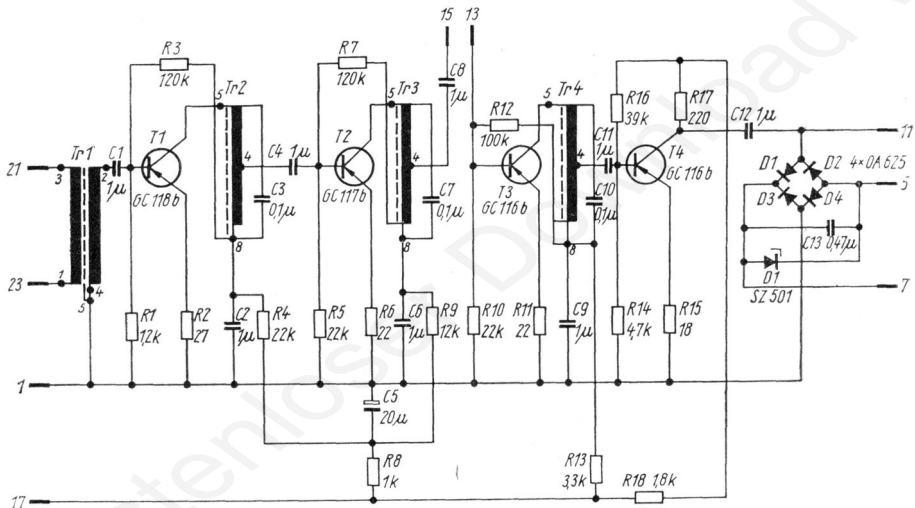
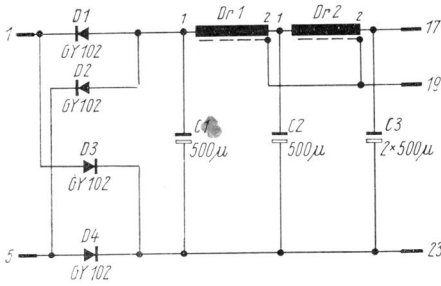


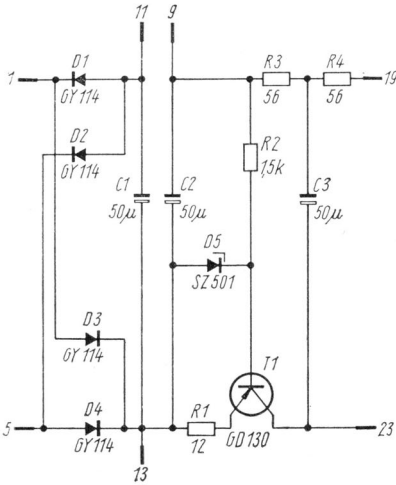
Transistoren-Meßgerät Typ 1029



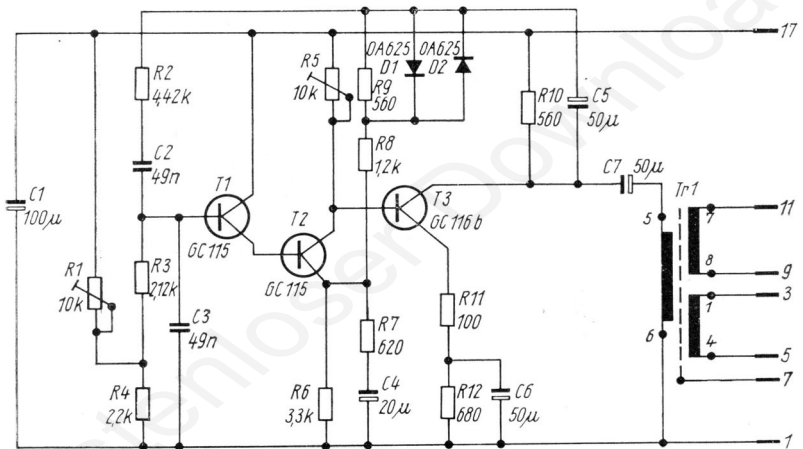
Transistoren-Meßgerät Typ 1029 - Selektivverstärker Ks 1



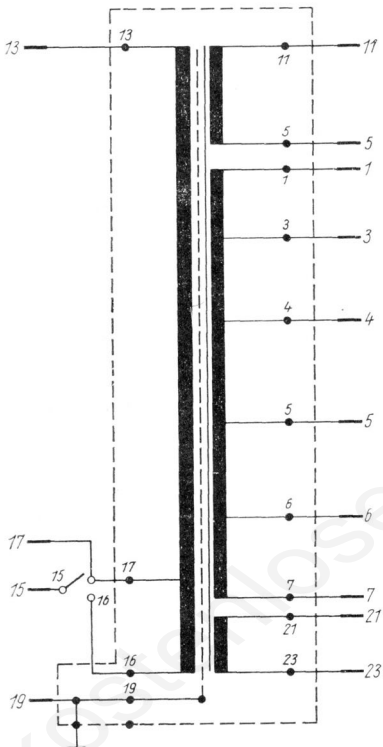
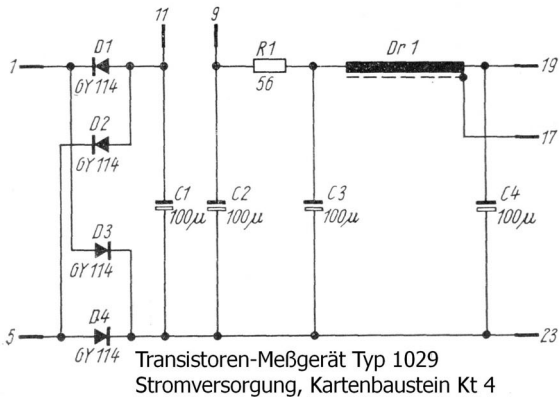
Transistoren-Meßgerät Typ 1029 -
Stromversorgung, Kartenbaustein Kt 1

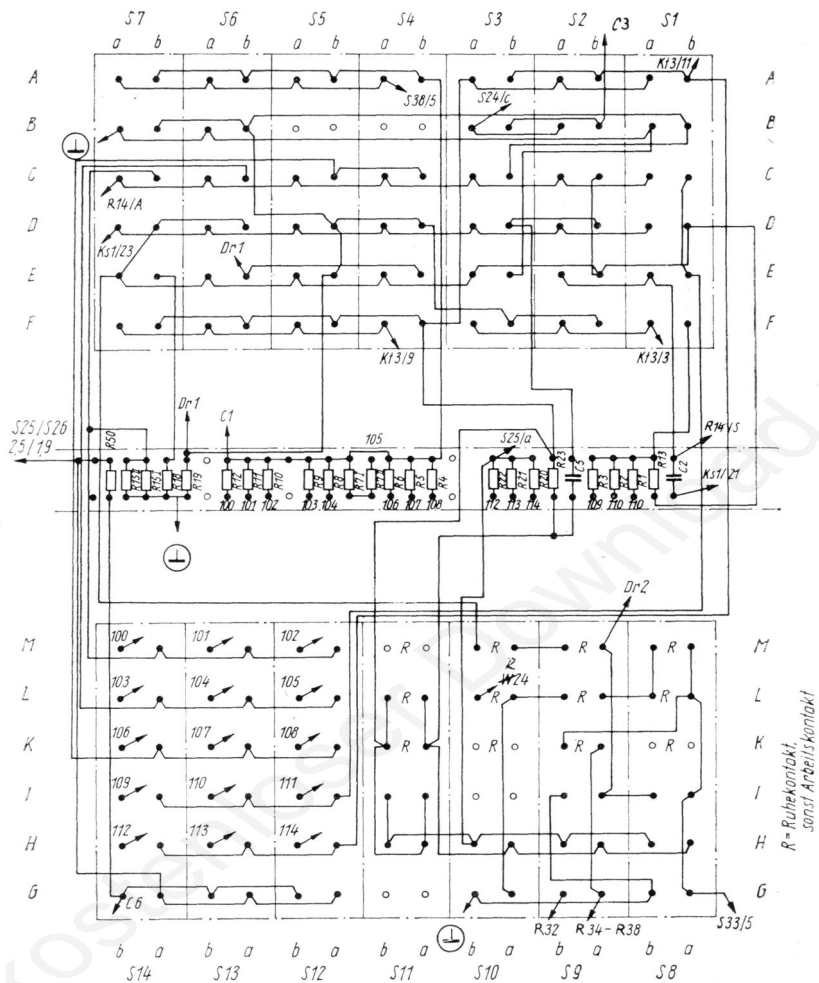


Transistoren-Meßgerät Typ 1029
Stromversorgung, Kartenbaustein Kt 2



Transistoren-Meßgerät Typ 1029
Oszillator, Kartenbaustein Kt 3





Transistoren-Meßgerät Typ 1029 - Kontaktbelegung der Schalter