



# Instructions

## 016-0825-01

### RACKMOUNTING KIT

## INTRODUCTION

### DESCRIPTION

The TEKTRONIX 2400 Series Oscilloscopes can be mounted into a standard 19-inch equipment rack using the Rackmount Kit (Part Number 016-0825-00) or by ordering the instrument with Option 1R. Assembling the Rackmounting Conversion Kit and mounting the adapted oscilloscope in accordance with the following instructions allows the instrument to meet the electrical specification as stated in the respective Service Manual and Operators Manual. Changes to the standard instrument's environmental specification are explained in the following paragraphs. Should mounting methods other than those described in these procedures be used, the instrument may not meet the stated environmental characteristics for temperature, vibration, and shock.

Throughout these procedures, the numbered items in parentheses refer to the circled items shown in Figure 8 (exploded view at the rear of these instructions).

### ENVIRONMENTAL REQUIREMENTS FOR RACKMOUNTED INSTRUMENTS

With the exception of the following characteristics, the environmental specification listed in the associated Operators and Service Manuals apply to the rackmounted instrument.

#### Temperature

##### Operating

Inside Rack Cabinet      $-15^{\circ}\text{C}$  to  $+55^{\circ}\text{C}$ .

Fan Exhaust  
Temperature              $\leq +65^{\circ}\text{C}$ .

#### Vibration

15 minutes along each of three axes at a total displacement of 0.015 inch p-p (2.3g at 55 Hz), with frequency varied from 10 Hz to 55 Hz in one minute sweeps. Held 10 minutes at each major resonance or, if none existed, held 10 minutes at 55 Hz (75 minutes total test time).

#### Shock (operating and nonoperating)

30g, half-sine, 11 ms duration, three shocks on each face, for a total of 18 shocks.

### CLEARANCE REQUIREMENTS

The dimensional drawing in Figure 1 illustrates the assembled Rack Adapter and instrument. At least 7 inches (178 mm) of vertical space is required to mount the instrument (with the attached Adapter) into an equipment rack. Minimum width between the left- and right-front rails in the rack must be 17 5/8 inches (448 mm). Total depth of the rack must be at least 20 inches (508 mm). These clearances provide sufficient space for air circulation and accommodation of the power cord and mounting hardware.

### TOOLS REQUIRED

The following tools are required to attach the rackmount adapter and install the rackmounted instrument into a standard equipment cabinet.

- Flat-head screwdriver
- T-15 torx-head screwdriver
- T-20 torx-head screwdriver
- 5/16-inch wrench or nut driver
- 7/16-inch wrench or nut driver
- 3/32-inch Allen wrench

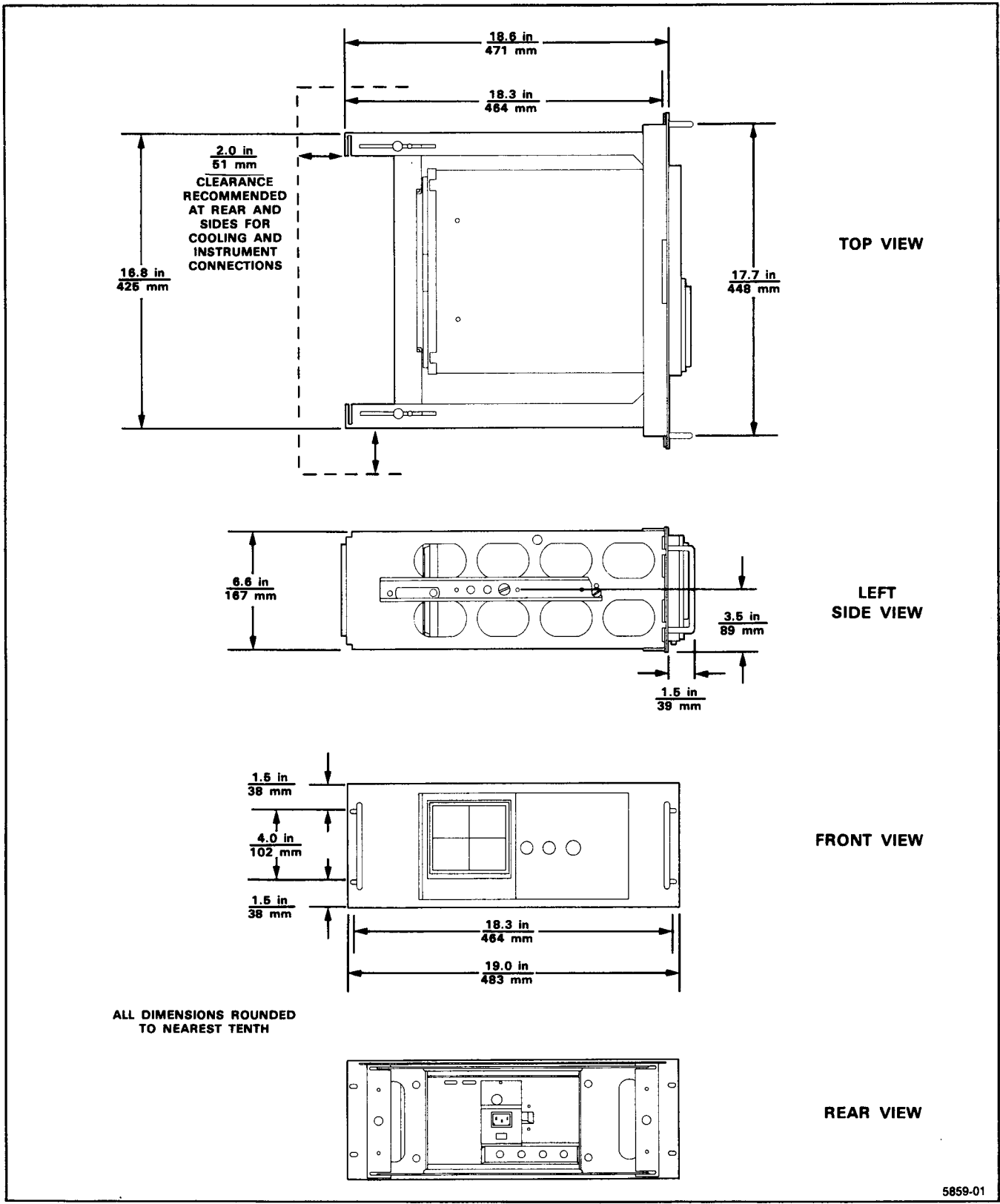


Figure 1. Dimensional drawing of the 2400 Series Rack Adapter.

## MOUNTING PROCEDURE

### NOTE

If your instrument was purchased in the rackmount configuration (Option 1R), the following section "Attaching The Adapter" was already performed at the factory. Proceed to the section titled "Rear-Panel Cabling."

### ATTACHING THE ADAPTER

The rackmounting conversion kit contains the necessary hardware and the directions (this instruction sheet) for converting a standard instrument into a rackmounted instrument. Installation of additional cabling and hardware required to route the rear-panel BNC connectors to the rack adapter's front panel is explained in the "Rear-Panel Cabling" description.

To convert the standard instrument to the rack-adapted version, perform the following steps.

### NOTE

*All parts removed from the instrument in this procedure should be kept. Some of them will be needed to perform this rack conversion, and the remainder will be needed if reversion to a standard instrument configuration is desired at a later time.*

1. Disconnect the ac-power cord from the power source and detach it from the instrument.

2. Install the protective front cover on the instrument and place it face down on a smooth work surface.

3. Remove the four torx-head screws retaining the instrument's rear feet and two torx-head screws from the center of the rear cover. Note cabinet and rear-cover orientation, then lift the rear cover from the cabinet.

4. Slide the wrap-around cabinet off the instrument, using care not to pull on any internal instrument wiring.

5. Lay the instrument on its top to gain access to the bottom of the front-panel trim ring and remove the protective front cover.

6. Remove the two center flathead screws from the bottom of the front-panel trim ring (do not remove the recessed screw). Place the instrument in a safe place while continuing the remaining steps.

### NOTE

*Before the cabinet handle can be removed from 2465/2465A and 2467 instruments, the shield must be removed, located over the torx-head screws and spring washers. To do this, remove the two phillips-head screws on each side of the shield.*

7. Remove the two torx-head screws and spring washers retaining the cabinet handle and remove the handle. Also remove the three torx-head screws holding the accessory pouch to the cabinet and remove the pouch.

### NOTE

*Numbers in parentheses refer to numbers shown in the mechanical parts exploded view, Figure 8.*

8. On the rack-adapter chassis, loosen (but don't remove) the four torx-head screws (18) with lock washers (19) and the four torx-head screws (16) with nylon washers (17) holding the rear cabinet support (23) in position. Slide the support to the rear of the rack adapter.

9. Place the rear of the rack adapter on a smooth work surface so the chassis is standing face up.

### NOTE

*The next step involves adding four spacers to the rear cabinet support. This kit provides appropriate spacers to assemble several different instrument types. To prevent damage to the instrument, be sure to use the correct spacers for your oscilloscope. (See Figures 8 and 9 and the parts list for Figure 9.)*

10. Install the appropriate spacers (24) in the rear cabinet support (23). The spacers screw into the support.

11. Remove the rubber feet from the instrument's rear cover and place the cover on top of the four spacers (24) on the rear cabinet support (23). Orient the rear cover so that the labels are toward the rear of the rack adapter and the holes for the BNC connectors are toward the bottom.

*NOTE*

*Failure to install the cabinet properly will block ventilation causing overheating and subsequent failure of CCDs and/or A to D converter. This may require replacement of the Main Board or Time Base Board.*

12. Insert the cabinet into the rack adapter through the top or bottom of the adapter chassis so that it mates with the rear panel as noted in Step 3 (cabinet seam should be on the bottom and the handle holes nearest the front).

13. Slide the rear cabinet support (23) forward until approximately 1/4 inch of the cabinet protrudes through the rack adapter's front panel (6).

14. Tighten the four screws (18), two on each side (top and bottom), enough to temporarily hold the rear cabinet support (23) in place.

15. Orient the instrument to mate with the cabinet and rear cover as noted in Step 3, then slide the instrument into the wrap-around cabinet, using care not to pull on any internal instrument wiring.

*NOTE*

*Before continuing with the next step, ensure that the EMI gasket is in place between the instrument front panel and chassis and is in contact with the cabinet on all sides.*

*NOTE*

*The next step involves installing four screws through the rear support bracket and spacers. This kit provides appropriate screws to assemble several different instrument types. Be sure to use the correct screws for your oscilloscope to prevent damage. See Figure 9 and its parts list.*

16. Install the four screws (25) with the four flat washers (26) through the rear support bracket (23), spacers (24), and instrument rear cover into the instrument chassis and tighten. The 2467 instrument does not require the use of the four flat washers.

17. Install the two shorter torx-head screws, removed in Step 3, into the two center holes of the rear panel and tighten.

18. Loosen the four screws (18) tightened in Step 14 and adjust the rear cabinet support (23) until the two holes in the bottom of the instrument trim ring are aligned with the two holes in the angle bracket (8). Maintain this alignment throughout Steps 19 and 20.

19. Install two 6-32 x 0.5-inch torx-head screws (29) into the angle bracket (8) and tighten.

20. Tighten the four screws (18) with lock washers (19). Next tighten the four screws (16) with nylon washers (17), two on each side (top and bottom). Be sure to maintain the alignment obtained in Step 18.

*NOTE*

*The setscrews are self-locking and require some effort to either tighten or loosen.*

21. Install two hex-head setscrews (12) into the top of the adapter frame and tighten to hold the front of the instrument firmly in place. Do not over-tighten these screws, as they may bend the cabinet.

## REAR-PANEL CABLING

The rear-panel connectors may not be readily accessible with the rack-adapted instrument mounted in an equipment rack. If it is desired to bring any of the rear-panel BNC connectors to the front panel of the rack adapter, some additional hardware must be used. Holes in the rack adapter front panel have been provided for mounting any of the desired BNC-to-BNC adapters and interconnecting cables. The BNC-to-BNC adapters and interconnecting cables are not provided in the Rack Adapter Kit, but they can be ordered through your local Tektronix Field Office or representative. Part numbers for required BNC adapters and cables are:

| Item                 | Tektronix Part Number |
|----------------------|-----------------------|
| BNC-to-BNC adapter   | 103-0070-00           |
| 30-inch BNC cable    | 012-0117-00           |
| Adhesive cable clamp | 343-0298-00           |

Accessory kits are available for instruments equipped with Option 9 (Word Recognizer) and/or Option 11 (Probe-Power). The accessory kits allow the option connectors on the rear panel to be connected to the front panel of the rack adapter. Part numbers for the Option 9 and Option 11 accessory kits are listed under the "Optional Accessories" heading in the "Replaceable Parts List".

The BNC-to-BNC adapters and interconnecting cables are installed as follows.

1. Remove the plastic plug (5) from the desired mounting hole on the rack adapter's front panel and install the BNC-to-BNC adapter (see Figure 2).

2. Install the nylon channel grommet (27) into the appropriate hole in the rear support channel.

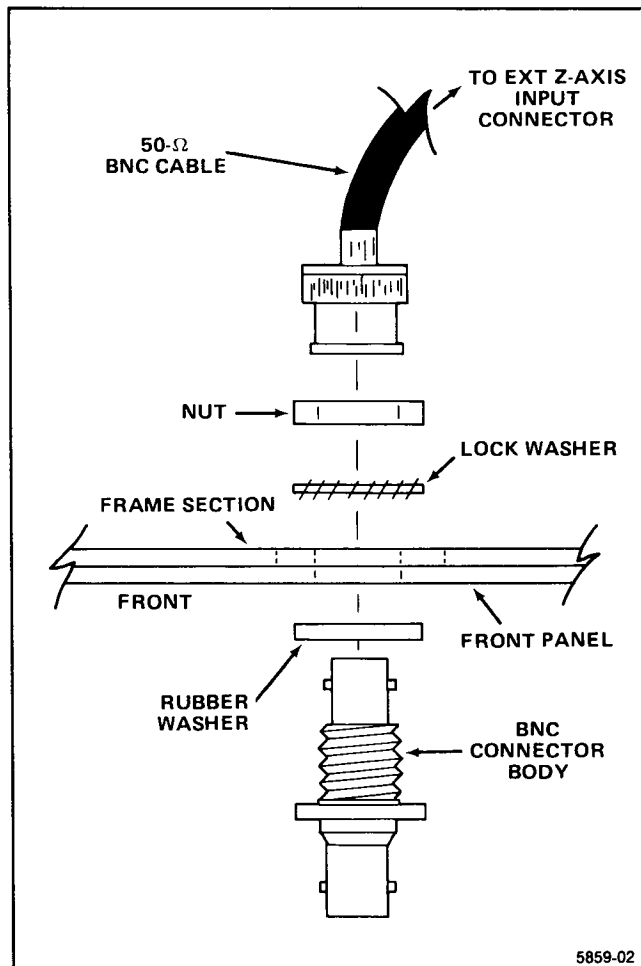


Figure 2. Installing the optional BNC connector(s).

3. Connect one end of the cable into its mating connector on the instrument's rear panel. Route the other end through the plastic grommet and connect it to the front-panel adapter. Peel the backing from an adhesive cable clamp and secure the cable to the rack adapter chassis.

4. Peel the backing from the appropriate identity marker (4) and install it above the front-panel connector.

Rack conversion of the instrument is now complete. To install the converted instrument into a standard 19-inch rack, use the following procedures.

## INSTALLING THE OPTION 1R AND RACK-ADAPTED INSTRUMENT

### NOTE

The rack hardware kit contains hardware needed for mounting the instrument in several configurations. All of the hardware in the kit will not be needed.

The slide-out tracks permit the rack-adapted 2400 Series Oscilloscopes to be extended out of the rack for rear-panel and connector maintenance without removing the instrument from the rack. When the tracks are fully extended, the instrument may be tilted up for easier access to the rear-panel connectors. To operate the oscilloscope in the extended position, be sure the power cord and any interconnecting cables are long enough for this type of use.

### WARNING

During rackmount installation, interchanging the left and right slide-out track assemblies defeats the extension stop (safety latch) feature of the tracks. Equipment could, when extended, come out of the slides and fall from the rack, possibly causing personal injury and equipment damage.

### NOTE

In an environment where the rackmounted instrument will be subject to severe vibration and shock, the optional rear-support kit (Tektronix Part Number 016-0096-00) must be used.

016-0825-01 Rackmounting Kit

To install the rack-adapted instrument into a standard 19-inch rack using the optional rear-support kit, perform the following.

1. Select the appropriate front-rail mounting holes on the equipment rack cabinet, verifying the 7-inch (178 mm) vertical clearance requirements as shown in Figure 3.

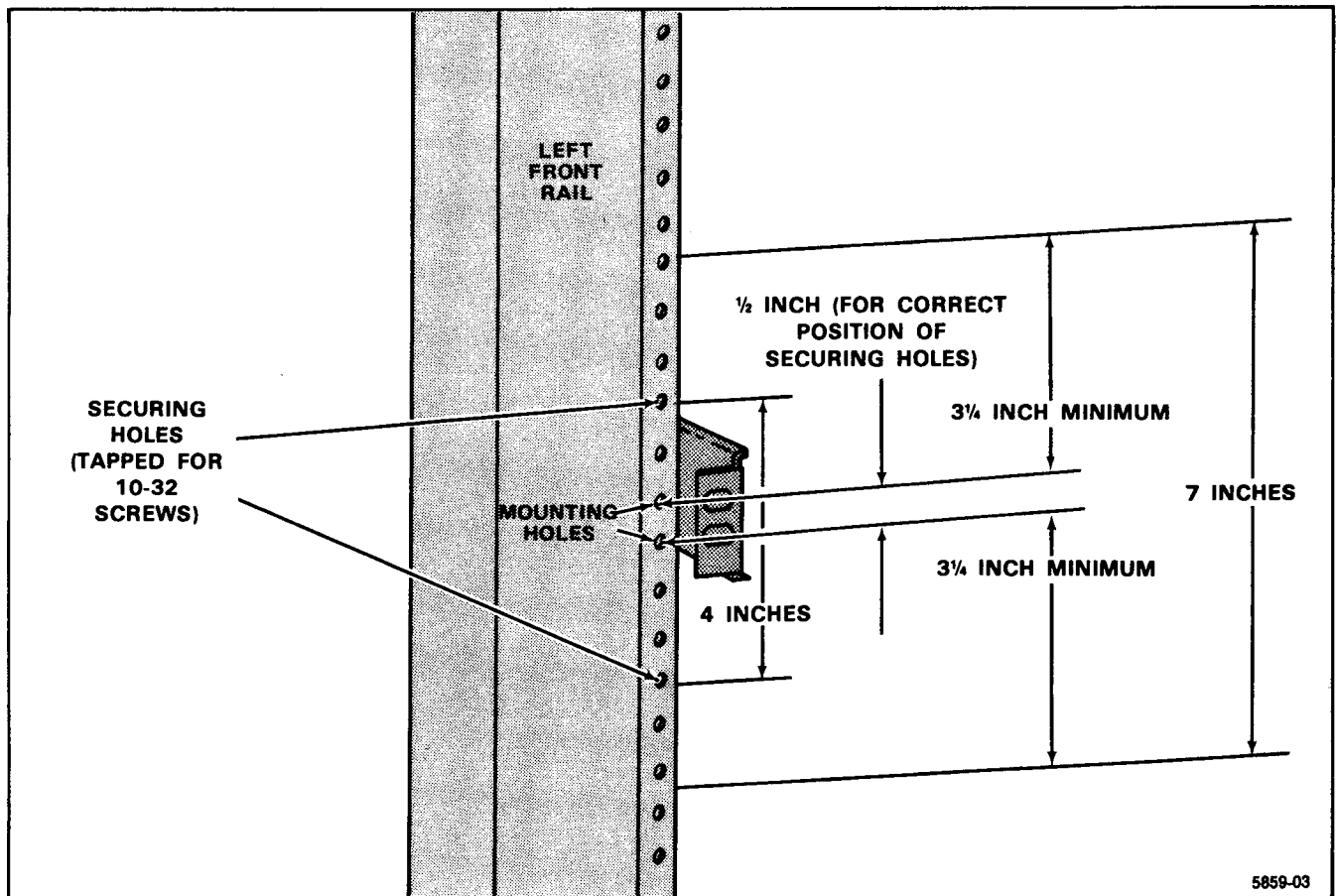


Figure 3. Locating mounting holes for the stationary sections.

2. If the mounting flanges of the stationary section are to be mounted in front of the front rails, attach as shown in Figure 4A.

If the mounting flanges are to be mounted behind the front rails attach them using the barnuts as shown in Figure 4B.

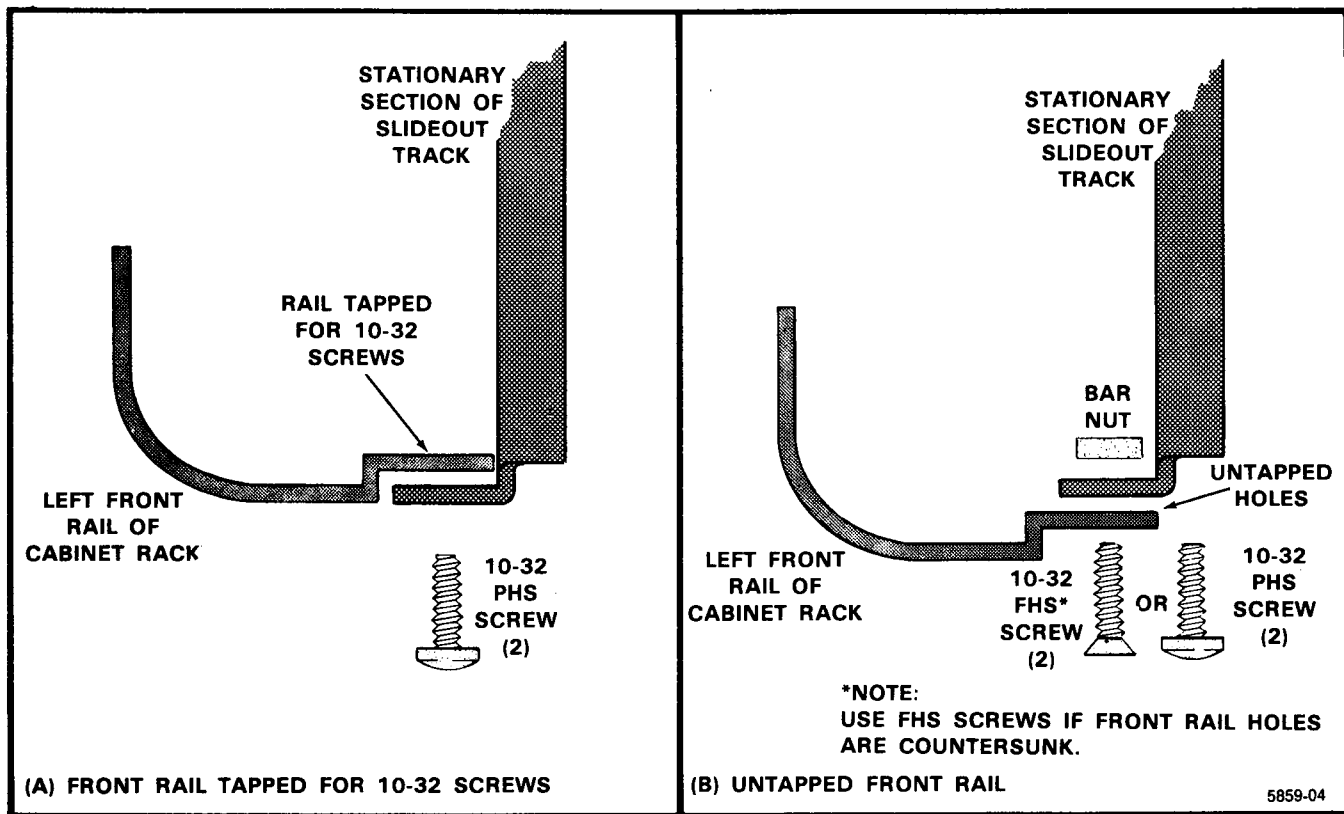


Figure 4. Methods of mounting the stationary sections to the front rails.

**NOTE**

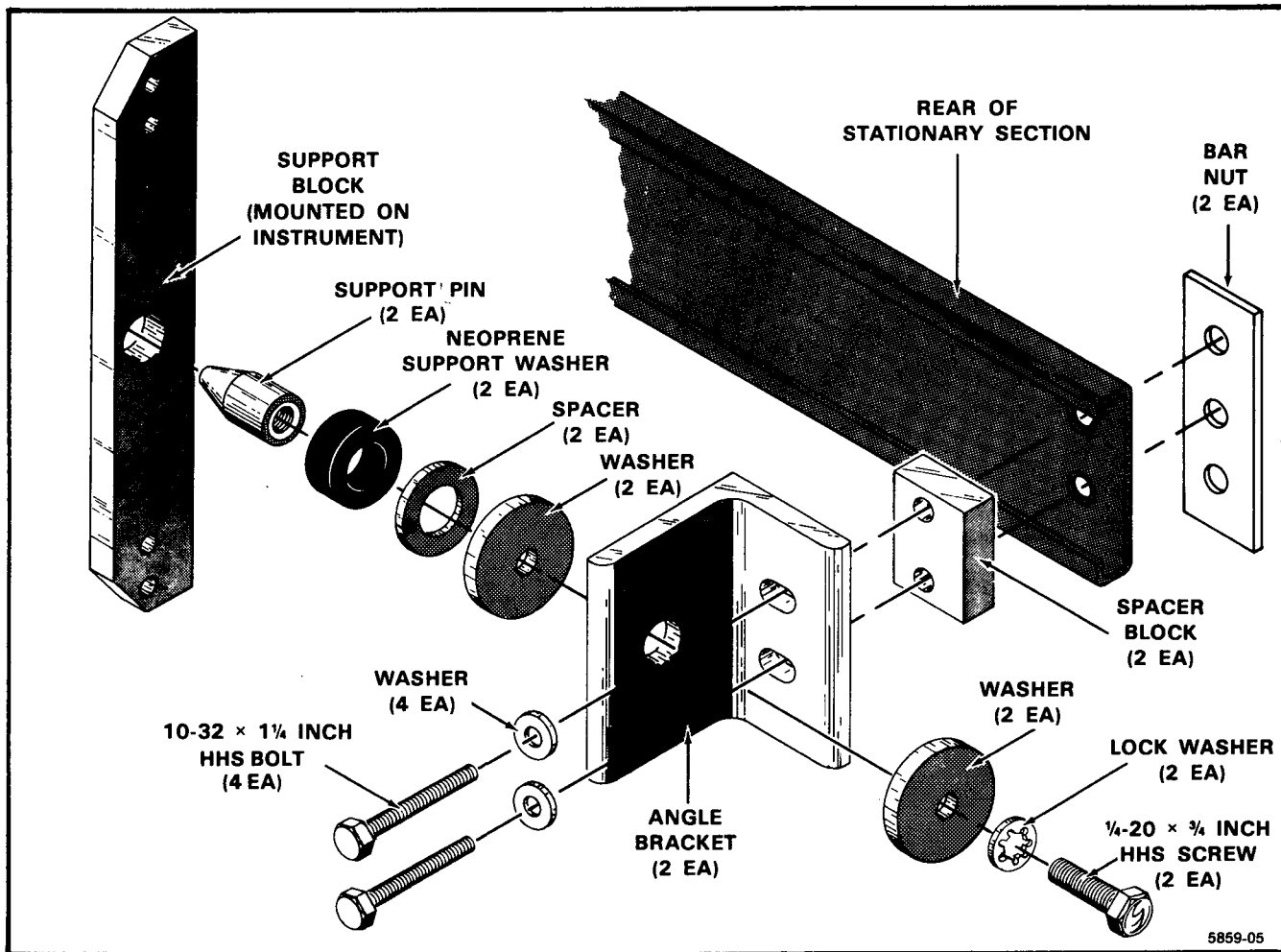
The holes in the spacer block (shown in Figure 5) are not centered. The spacer blocks must be mounted with their narrow edges toward the front of the rack. This allows the instrument to slide fully into the rack.

the parts as shown in Figure 5. The bolts should be fully inserted and lightly seated, but not tightened at this time.

4. Attach the support pins to the angle brackets as shown in Figure 5, temporarily leaving out the spacers between the neoprene support washers and flat washers.

5. Install a support block on each rear corner of the rack-adaptor chassis.

3. Attach an angle bracket to each of the rear rails by inserting the mounting bolts through the angle brackets, spacer blocks, stationary sections of the slide-out tracks, and into the rear-support members of the rack cabinet, assembling



5859-05

Figure 5. Rear support kit.



6. If you desire to let the instrument tilt up as shown in Figure 6, (for maintenance purposes), remove the swivel retaining screw from the rear of each chassis rail before performing the next step. Figure 7 (page 10) illustrates the location of the swivel retaining screw in the chassis rails.

7. Insert the slide-out tracks, attached to the rack-adaptor chassis, into the stationary tracks mounted in the rack cabinet. Slide the rack-adapted instrument fully into the rack cabinet.

**NOTE**

*Do not install the power cord or front-panel-securing screws until Steps 8 through 13 have been performed.*

8. With the instrument pushed all the way into the rack, adjust the angle brackets at the rear of the instrument until the neoprene washers on the support pins are firmly seated against the support blocks at the rear of the instrument.

9. Tighten the rear-mounting bolts; then pull the instrument partially out of the rack.

10. Remove the neoprene washers, install spacers on the support pins, and reinstall the neoprene washers.

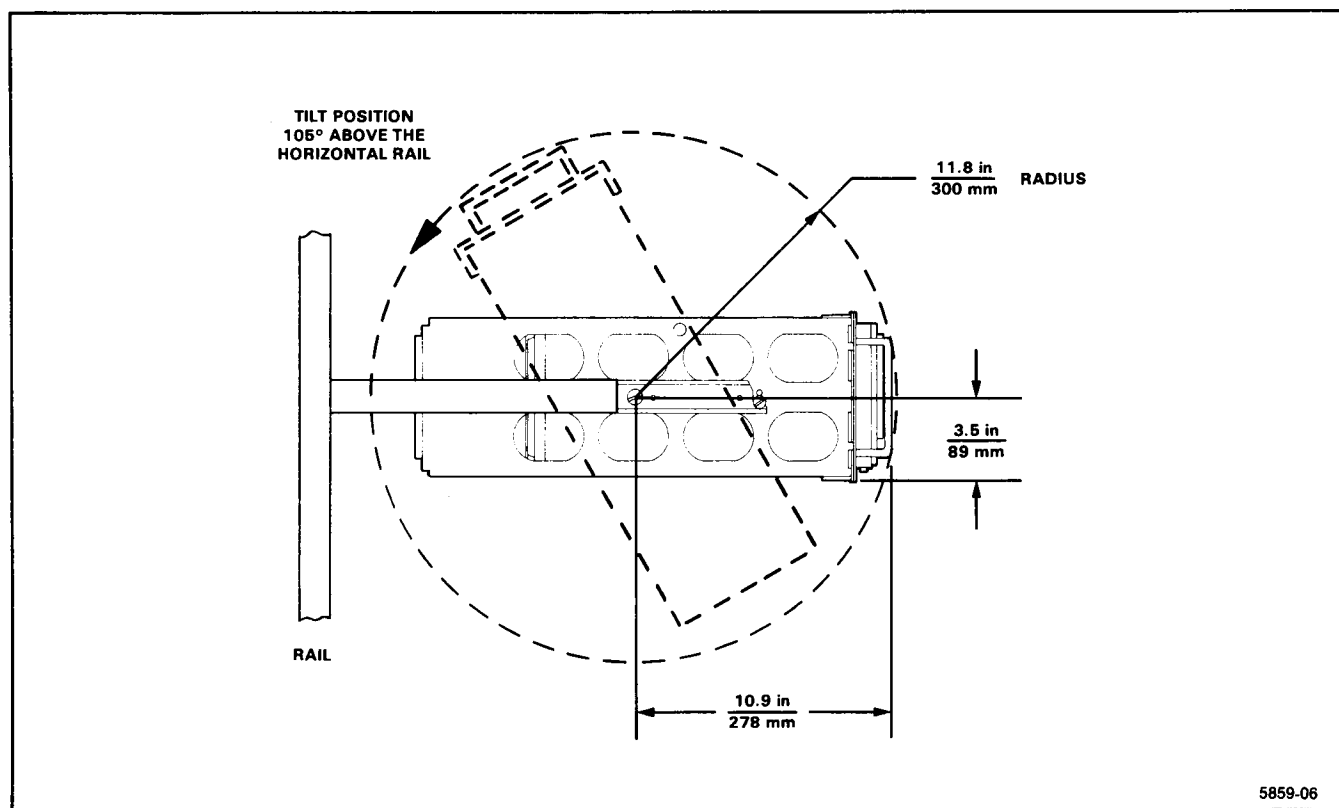
11. Position the instrument so the pivot screws are approximately even with the front rails.

12. Loosen the mounting screws at the front of both stationary track sections (the two screws attached to each front rail of the cabinet) and allow the tracks to seek their normal positions.

13. Retighten the screws and push the instrument all the way into the rack. If the tracks do not slide smoothly, recheck track alignment as set in Steps 8 through 13.

14. Attach the power cord and any other cabling to the rear of the instrument.

15. With the instrument pushed all the way into the rack cabinet, install and tighten the mounting screws at the four corners of the rack adapter's front panel.



**Figure 6. Tilting the rack-adapted instrument.**

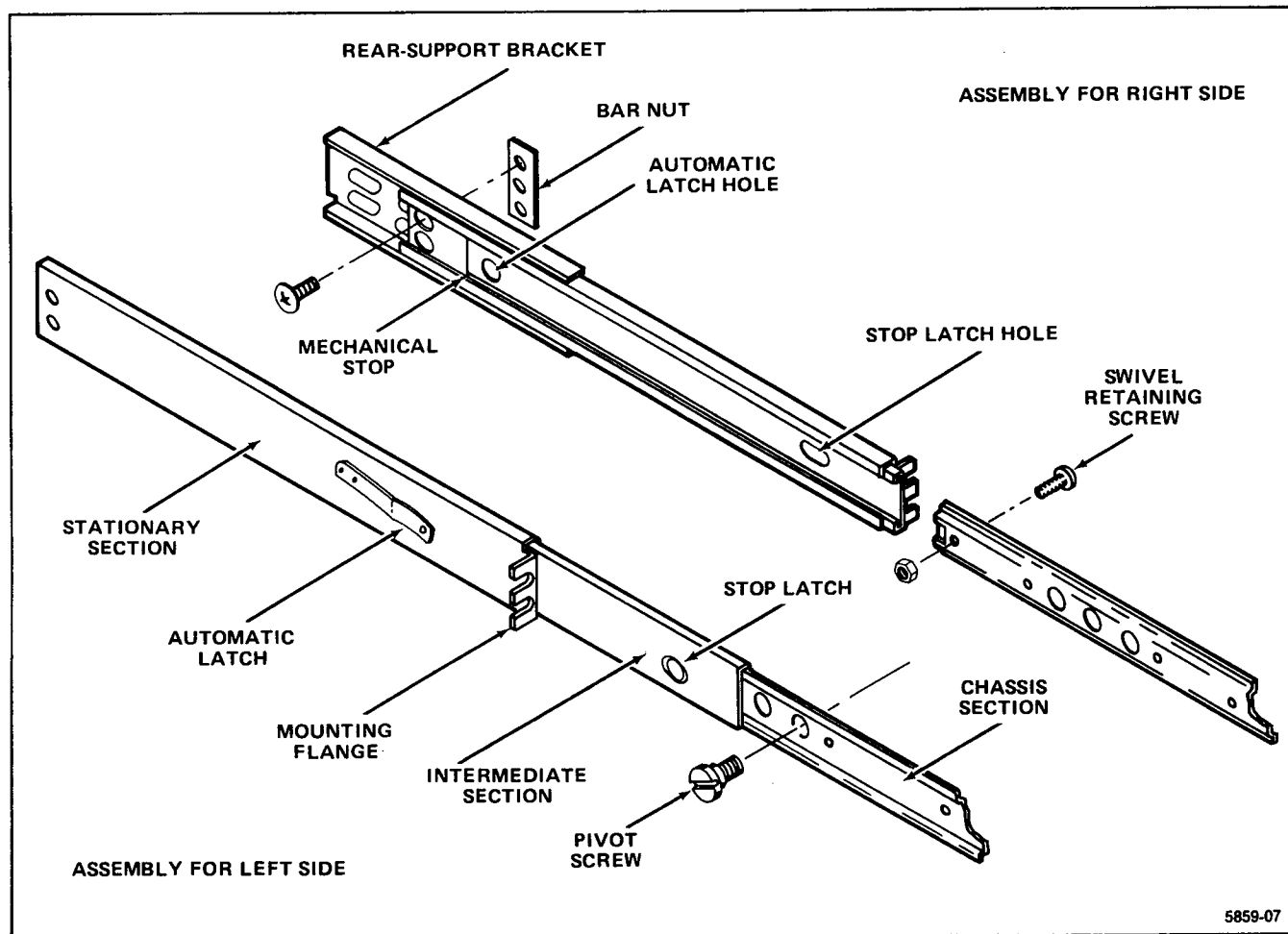


Figure 7. Slide-out track assembly .

### ALTERNATE MOUNTING METHOD



*Although the following method provides satisfactory mounting under normal conditions, it does not provide solid support at the rear of the instrument. Should the instrument be subjected to severe shock or vibration when mounted in the following manner, it may be damaged.*

The rear-support extension brackets supplied with the rack-adapter chassis tracks allow the rack-adapted instrument to be mounted in equipment cabinets having front-to-rear rail spacings between 14 inches and 26 inches. Depending on how the rear-support brackets are attached to the cabinet's rear rail, mounting points for the rear of the stationary track can be provided either in front of or behind the rear cabinet rail. The rear-support kit cannot be properly used with this type of installation.

# REPLACEABLE MECHANICAL PARTS

## PARTS ORDERING INFORMATION

Replacement parts are available from or through your local Tektronix, Inc. Field Office or representative.

Changes to Tektronix instruments are sometimes made to accommodate improved components as they become available, and to give you the benefit of the latest circuit improvements developed in our engineering department. It is therefore important, when ordering parts, to include the following information in your order: Part number, instrument type or number, serial number, and modification number if applicable.

If a part you have ordered has been replaced with a new or improved part, your local Tektronix, Inc. Field Office or representative will contact you concerning any change in part number.

Change information, if any, is located at the rear of this manual.

## ITEM NAME

In the Parts List, an Item Name is separated from the description by a colon (:). Because of space limitations, an Item Name may sometimes appear as incomplete. For further Item Name identification, the U.S. Federal Cataloging Handbook H6-1 can be utilized where possible.

## FIGURE AND INDEX NUMBERS

Items in this section are referenced by figure and index numbers to the illustrations.

## INDENTATION SYSTEM

This mechanical parts list is indented to indicate item relationships. Following is an example of the indentation system used in the description column.

```

1 2 3 4 5           Name & Description
Assembly and/or Component
Attaching parts for Assembly and/or Component
    ....END ATTACHING PARTS....
Detail Part of Assembly and/or Component
Attaching parts for Detail Part
    ....END ATTACHING PARTS....
Parts of Detail Part
Attaching parts for Parts of Detail Part
    ....END ATTACHING PARTS....
  
```

Attaching Parts always appear in the same indentation as the item it mounts, while the detail parts are indented to the right. Indented items are part of, and included with, the next higher indentation.

**Attaching parts must be purchased separately, unless otherwise specified.**

## ABBREVIATIONS

|       |                    |         |                       |          |                      |          |                 |
|-------|--------------------|---------|-----------------------|----------|----------------------|----------|-----------------|
| "     | INCH               | ELCTRN  | ELECTRON              | IN       | INCH                 | SE       | SINGLE END      |
| #     | NUMBER SIZE        | ELEC    | ELECTRICAL            | INCAND   | INCANDESCENT         | SECT     | SECTION         |
| ACTR  | ACTUATOR           | ELECT   | ELECTROLYTIC          | INSUL    | INSULATOR            | SEMICOND | SEMICONDUCTOR   |
| ADPTR | ADAPTER            | ELEM    | ELEMENT               | INTL     | INTERNAL             | SHLD     | SHIELD          |
| ALIGN | ALIGNMENT          | EPL     | ELECTRICAL PARTS LIST | LPHLDR   | LAMPHOLDER           | SHLDR    | SHOULDERED      |
| AL    | ALUMINUM           | EQPT    | EQUIPMENT             | MACH     | MACHINE              | SKT      | SOCKET          |
| ASSEM | ASSEMBLED          | EXT     | EXTERNAL              | MECH     | MECHANICAL           | SL       | SLIDE           |
| ASSY  | ASSEMBLY           | FIL     | FILLISTER HEAD        | MTG      | MOUNTING             | SLFLKG   | SELF-LOCKING    |
| ATTEN | ATTENUATOR         | FLEX    | FLEXIBLE              | NIP      | NIPPLE               | SLVG     | SLEEVING        |
| AWG   | AMERICAN WIRE GAGE | FLH     | FLAT HEAD             | NON WIRE | NOT WIRE WOUND       | SPR      | SPRING          |
| BD    | BOARD              | FLTR    | FILTER                | OBD      | ORDER BY DESCRIPTION | SQ       | SQUARE          |
| BRKT  | BRACKET            | FR      | FRAME or FRONT        | OD       | OUTSIDE DIAMETER     | SST      | STAINLESS STEEL |
| BRS   | BRASS              | FSTNR   | FASTENER              | OVH      | OVAL HEAD            | STL      | STEEL           |
| BRZ   | BRONZE             | FT      | FOOT                  | PH BRZ   | PHOSPHOR BRONZE      | SW       | SWITCH          |
| BSHG  | BUSHING            | FXD     | FIXED                 | PL       | PLAIN or PLATE       | T        | TUBE            |
| CAB   | CABINET            | GSKT    | GASKET                | PLSTC    | PLASTIC              | TERM     | TERMINAL        |
| CAP   | CAPACITOR          | HDL     | HANDLE                | PN       | PART NUMBER          | THD      | THREAD          |
| CER   | CERAMIC            | HEX     | HEXAGON               | PNH      | PAN HEAD             | THK      | THICK           |
| CHAS  | CHASSIS            | HEX HD  | HEXAGONAL HEAD        | PWR      | POWER                | TNSN     | TENSION         |
| CKT   | CIRCUIT            | HEX SOC | HEXAGONAL SOCKET      | RCPT     | RECEPTACLE           | TPG      | TAPPING         |
| COMP  | COMPOSITION        | HLCPS   | HELICAL COMPRESSION   | RES      | RESISTOR             | TRH      | TRUSS HEAD      |
| CONN  | CONNECTOR          | HLEXT   | HELICAL EXTENSION     | RGD      | RIGID                | V        | VOLTAGE         |
| COV   | COVER              | HV      | HIGH VOLTAGE          | RLF      | RELIEF               | VAR      | VARIABLE        |
| CPLG  | COUPLING           | IC      | INTEGRATED CIRCUIT    | RTNR     | RETAINER             | W/       | WITH            |
| CRT   | CATHODE RAY TUBE   | ID      | INSIDE DIAMETER       | SCH      | SOCKET HEAD          | WSHR     | WASHER          |
| DEG   | DEGREE             | IDENT   | IDENTIFICATION        | SCOPE    | OSCILLOSCOPE         | XFMR     | TRANSFORMER     |
| DWR   | DRAWER             | IMPLR   | IMPELLER              | SCR      | SCREW                | XSTR     | TRANSISTOR      |

## CROSS INDEX - MFR. CODE NUMBER TO MANUFACTURER

| Mfr.<br>Code | Manufacturer                                    | Address                             | City, State, Zip Code |
|--------------|---|-------------------------------------|-----------------------|
| 01536        | TEXTRON INC<br>CAMCAR DIV<br>SEMS PRODUCTS UNIT | 1818 CHRISTINA ST                   | ROCKFORD IL 61108     |
| 06666        | GENERAL DEVICES CO INC                          | 1410 S POST RD<br>P O BOX 39100     | INDIANAPOLIS IN 46239 |
| 06915        | RICHCO PLASTIC CO                               | 5825 N TRIPP AVE                    | CHICAGO IL 60646      |
| 11897        | PLASTIGLIDE MFG CORP                            | 2701 W EL SEGUNDO BLVD              | HAWTHORNE CA 90250    |
| 63743        | WARD LEONARD ELECTRIC CO INC                    | 31 SOUTH ST                         | MOUNT VERNON NY 10550 |
| 78189        | ILLINOIS TOOL WORKS INC<br>SHAKEPROOF DIVISION  | ST CHARLES ROAD                     | ELGIN IL 60120        |
| 80009        | TEKTRONIX INC                                   | 4900 S W GRIFFITH DR<br>P O BOX 500 | BEAVERTON OR 97077    |
| 83385        | MICRODOT MANUFACTURING INC<br>GREER-CENTRAL DIV | 3221 W BIG BEAVER RD                | TROY MI 48098         |
| 83486        | ELCO INDUSTRIES INC                             | 1101 SAMUELSON RD                   | ROCKFORD IL 61101     |
| 86928        | SEASTROM MFG CO INC                             | 701 SONORA AVE                      | GLENDALE CA 91201     |
| 88245        | LITTON SYSTEMS INC<br>USECO DIV                 | 13536 SATICOY ST                    | VAN NUYS CA 91409     |
| 91836        | KINGS ELECTRONICS CO INC                        | 40 MARBLEDALE ROAD                  | TUCKAHOE NY 10707     |
| TK0435       | LEWIS SCREW CO                                  | 4114 S PEORIA                       | CHICAGO IL 60609      |
| TK0858       | STAUFFER SUPPLY CO                              | 105 SE TAYLOR                       | PORTLAND OR 97214     |
| TK1309       | LEXINGTON COMPANY                               | PO BOX 66-T                         | EDEN NY 14057         |
| TK1556       | CONSOLIDATED VINYL SALES                        | 1237 S SAN GABRIEL BLVD             | SAN GABRIEL CA 91776  |

| Fig. &<br>Index<br>No. | Tektronix<br>Part No. | Serial/Assembly No. |         | Qty | 12345<br>Name & Description   | Mfr.   |                  |
|------------------------|-----------------------|---------------------|---------|-----|---|--------|------------------|
|                        |                       | Effective           | Discont |     |   | Code   | Mfr. Part No.    |
| 8-1                    | 367-0022-00           |                     |         | 2   | HANDLE,BOW:4.579 L,BRS CRPL<br>(ATTACHING PARTS)                                    | 88245  | 15986            |
| -2                     | 212-0671-00           |                     |         | 4   | SCREW,MACHINE:10-32 X 0.625,FLH,100 DEG, STL,CD<br>PL,TORX<br>(END ATTACHING PARTS) | 83486  | ORDER BY DESCR   |
| -3                     | 214-3405-01           |                     |         | 2   | PLUG,HOLE:0.47 DIA,ABS CYN GSM  | 80009  | 214-3405-01      |
| -4                     | 334-4866-01           |                     |         | 1   | MARKER,IDENT:RACKMOUNT LABELS   | 80009  | 334-4866-01      |
| -5                     | 134-0144-01           |                     |         | 10  | BUTTON,PLUG:0.875 OD X 0.08,SMOKE TAN   | 80009  | 134-0144-01      |
| -6                     | 333-2934-01           |                     |         | 1   | PANEL,FRONT:<br>(ATTACHING PARTS)   | 80009  | 333-2934-01      |
| -7                     | 210-0586-00           |                     |         | 4   | NUT,PL,ASSEM WA:4-40 X 0.25,STL CD PL<br>(END ATTACHING PARTS)                      | 78189  | 211-041800-00    |
| -8                     | 407-2887-00           |                     |         | 1   | BRKT,DBL ANGLE:UPPER & LWR,FRAME PANEL<br>(ATTACHING PARTS)                         | 80009  | 407-2887-00      |
| -9                     | 212-0159-00           |                     |         | 3   | SCREW,MACHINE:8-32 X 0.375,FLH,100 DEG,STL<br>(END ATTACHING PARTS)                 | 83486  | ORDER BY DESCR   |
| -10                    | 426-1893-01           |                     |         | 1   | FRAME PNL,CAB.:FRONT<br>(ATTACHING PARTS)   | 80009  | 426-1893-01      |
| -11                    | 212-0159-00           |                     |         | 8   | SCREW,MACHINE:8-32 X 0.375,FLH,100 DEG,STL<br>(END ATTACHING PARTS)                 | 83486  | ORDER BY DESCR   |
| -12                    | 213-0921-00           |                     |         | 2   | SCREW,MACHINE:10-32 X 0.625,HEX SCH,SST   | TK1309 | ORDER BY DESCR   |
| -13                    | 351-0104-00           |                     |         | 1   | SL SECT,DWR EXT:12.625 X 2.25<br>(ATTACHING PARTS)                                  | 06666  | C-720-2          |
| -14                    | 212-0158-00           |                     |         | 6   | SCREW,MACHINE:8-32 X 0.375,PNH,STL<br>(END ATTACHING PARTS)                         | 83486  | ORDER BY DESCR   |
| -15                    | 426-1900-00           |                     |         | 2   | FRAME SECT,CAB.:RIGHT & LEFT<br>(ATTACHING PARTS)                                   | 80009  | 426-1900-00      |
| -16                    | 212-0157-00           |                     |         | 4   | SCREW,MACHINE:8-32 X 0.5,FLH,100 DEG,STL  | 83486  | ORDER BY DESCR   |
| -17                    | 210-1143-00           |                     |         | 4   | WASHER,FNSH:U/W #8 FLATHEAD SCR,NYLON   | 11897  | ORDER BY DESCR   |
| -18                    | 212-0004-00           |                     |         | 4   | SCREW,MACHINE:8-32 X 0.312,PNH,STL  | TK0435 | ORDER BY DESCR   |
| -19                    | 210-0007-00           |                     |         | 4   | WASHER,LOCK:#8 EXT,0.02 THK,STL<br>(END ATTACHING PARTS)                            | 78189  | 1108-00-00-0541C |
| -20                    | 211-0721-00           |                     |         | 2   | SCREW,MACHINE:6-32 X 0.375,PHN,STL  | 83486  | ORDER BY DESCR   |
| -21                    | 210-0808-00           |                     |         | 2   | WASHER,RECESSED:0.173 X 0.156,BRS,0.562   | 63743  | 25151.13-3       |
| -22                    | 210-0457-00           |                     |         | 2   | NUT,PL,ASSEM WA:6-32 X 0.312,STL CD PL  | 78189  | 511-061800-00    |
| -23                    | 386-4821-00           |                     |         | 1   | SUPPORT,CABINET:REAR  | 80009  | 386-4821-00      |
| -24                    | -----                 |                     |         | 4   | SPACER,SLEEVE:(SEE FIG 9 FOR PART NUMBER)<br>(ATTACHING PARTS)                      |        |                  |
| -25                    | -----                 |                     |         | 4   | SCREW,MACHINE:(SEE FIG 9 FOR PART NUMBER)   |        |                  |
| -26                    | -----                 |                     |         | 4   | WASHER,FLAT:(SEE FIG 9 FOR PART NUMBER)<br>(END ATTACHING PARTS)                    |        |                  |
| -27                    | 255-0334-00           |                     |         | 2   | PLASTIC CHANNEL:12.75 X 0.175 X 0.155   | 11897  | 122-37-2500      |
| -28                    | 016-0099-00           |                     |         | 1   | HDW KIT,ELEK EQ:RACKMOUNTING HDW  | 80009  | 016-0099-00      |
| -29                    | 211-0720-00           |                     |         | 2   | SCR,ASSEM WSHR:6-32 X 0.50,PNH,STL,TORX,T15   | 01536  | 829-09487        |
| STANDARD ACCESSORIES   |                       |                     |         |     |   |        |                  |
| -30                    | 351-0241-01           |                     |         | 1   | SLIDE,DWR,EXT:W/CLOSED MOUNTING SLOTS   | 80009  | 351-0241-01      |
|                        | 016-0096-00           |                     |         | 1   | HDW KIT,ELEK EQ:RACKMOUNTING  | 80009  | 016-0096-00      |
|                        | 016-0521-00           |                     |         | 1   | POUCH,ACCESSORY:PROBE ACCESSORIES   | TK1556 | ORDER BY DESCR   |
|                        | 070-5859-01           |                     |         | 1   | SHEET,TECHNICAL:INSTR,2400 SERIES   | 80009  | 070-5859-01      |
| OPTIONAL ACCESSORIES   |                       |                     |         |     |   |        |                  |
|                        | 103-0070-00           |                     |         | 1   | ADAPTER,CONN:BNC FEMALE TO BNC FEMALE   | 91836  | UG492 TR-5       |
|                        | 012-0117-00           |                     |         | 1   | CABLE ASSY,RF:50 OHM COAX,30.0 L  | 91836  | K-3804           |
|                        | 343-0298-00           |                     |         | 1   | STRAP,RETAINING:0.25 DIA CABLE  | 06915  | HUC-4            |

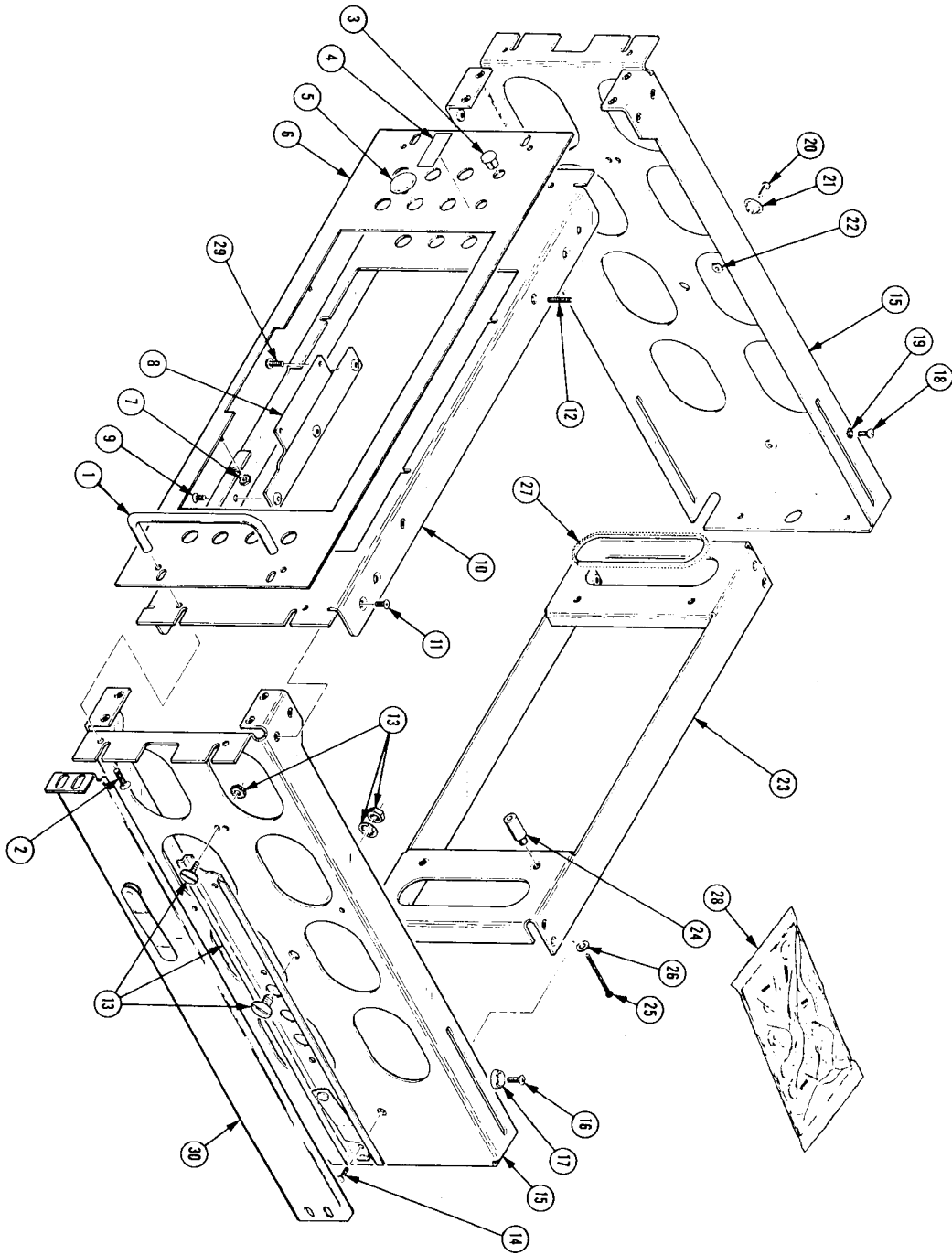


FIGURE 8

016-0825-01 Rackmounting Kit

| Fig. &<br>Index<br>No. | Tektronix<br>Part No. | Serial/Assembly No.<br>Effective Dscont | Qty | 12345<br>Name & Description                                  | Mfr.<br>Code | Mfr. Part No.  |
|------------------------|-----------------------|---|-----|--|--------------|----------------|
| 9-                     |                       |   |     | 2445,2465 SPACER AND HARDWARE                                |              |                |
| -1                     | 361-1177-01           |   | 4   | SPACER,SLEEVE:0.70 L,0.175 ID,AL<br>(ATTACHING PARTS)        | 80009        | 361-1177-01    |
| -2                     | 212-0037-00           |   | 4   | SCREW,MACHINE:8-32 X 1.75,FILH,STL                           | 83385        | ORDER BY DESCR |
| -3                     | 210-0804-00           |   | 4   | WASHER,FLAT:0.17 ID X 0.375 OD,STL<br>(END ATTACHING PARTS)  | 86928        | 76430-000      |
|                        |                       |   |     | 2430 SPACER AND HARDWARE                                     |              |                |
| -4                     | 361-1177-00           |   | 4   | SPACER,SLEEVE:0.55 L X 0.175 ID,AL<br>(ATTACHING PARTS)      | 80009        | 361-1177-00    |
| -5                     | 212-0037-00           |   | 4   | SCREW,MACHINE:8-32 X 1.75,FILH,STL                           | 83385        | ORDER BY DESCR |
| -6                     | 210-0804-00           |   | 4   | WASHER,FLAT:0.17 ID X 0.375 OD,STL<br>(END ATTACHING PARTS)  | 86928        | 76430-000      |
|                        |                       |   |     | 2467 SPACER AND HARDWARE                                     |              |                |
| -7                     | 361-1378-00           |   | 4   | SPACER,SLEEVE:0.175 ID X 0.50 L,AL<br>(ATTACHING PARTS)      | 80009        | 361-1378-00    |
| -8                     | 212-0029-00           |   | 4   | SCREW,MACHINE:8-32 X 3.0 HEX HD,STL<br>(END ATTACHING PARTS) | TK0858       | ORDER BY DESCR |

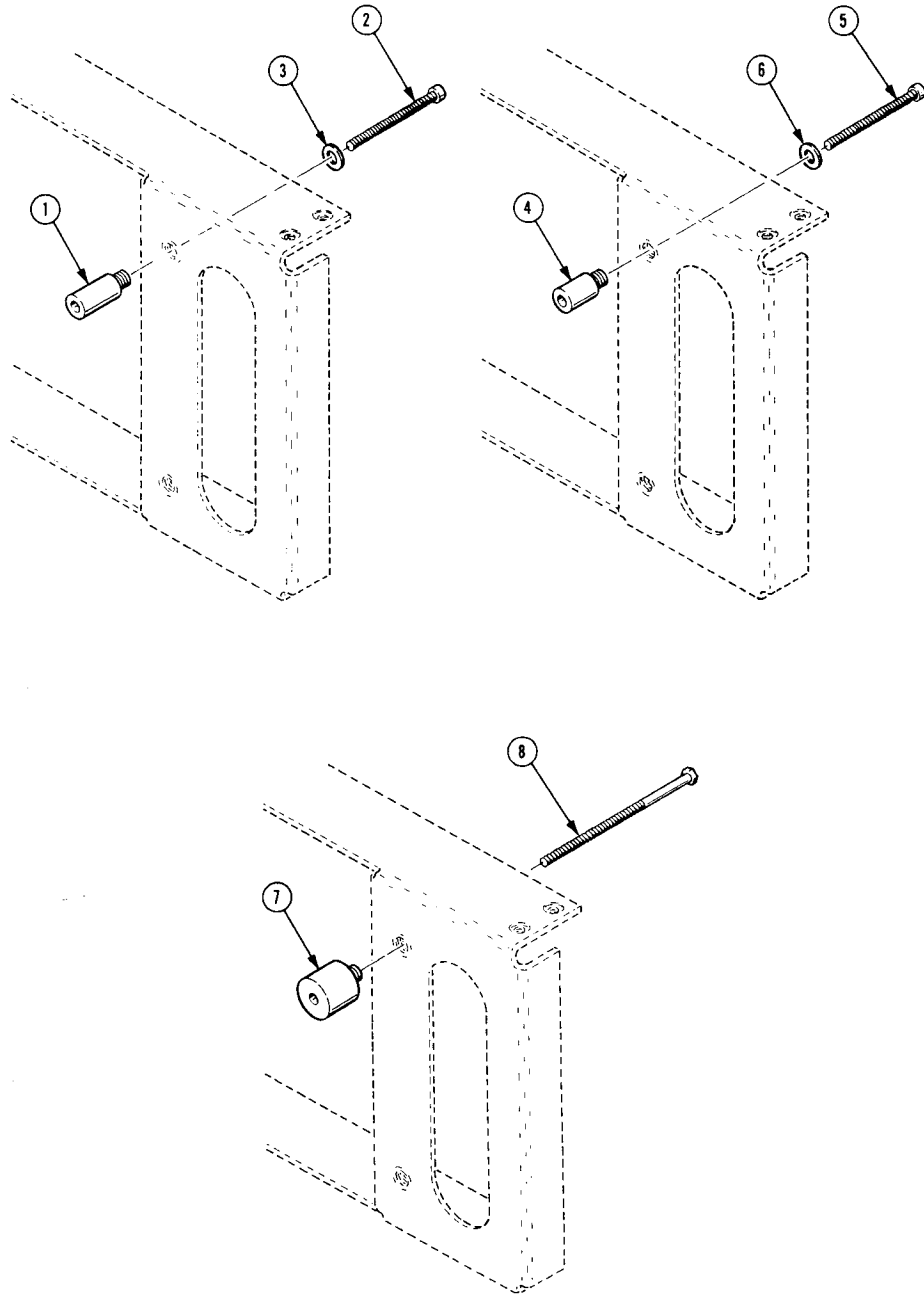


FIGURE 9