

$14 \times 2 \times 72'' \text{ length of } 2 \times 2 =$

2" x 2" SAs Fir
FINISHED 1 1/2" x 1 1/2"

6' 8" 1/2
135.1/2

21 1/2"

20"

28 1/4"

ROOF

3 CORNER JOISTS
2x2 FIC 72" LING

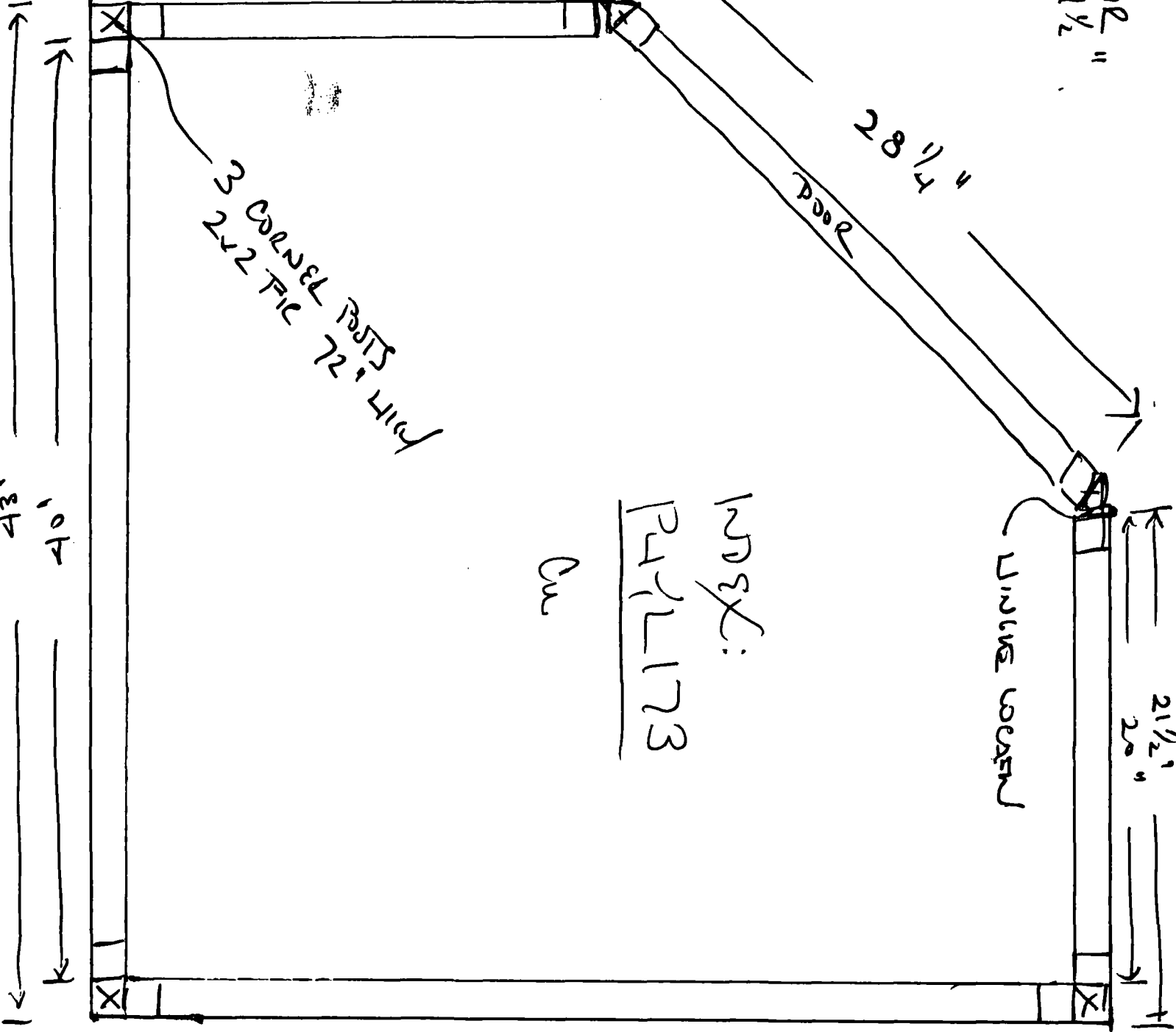
UNIQUE BEAMS

INDS:
P47L173

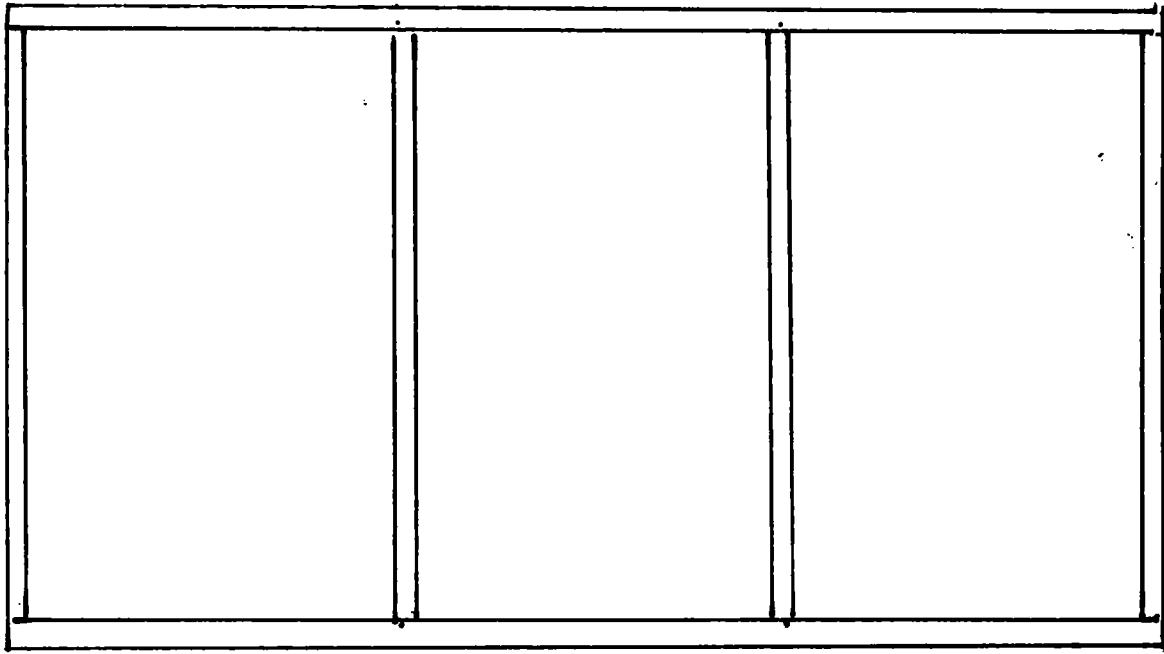
or

21 1/2"
20"

40"
43"



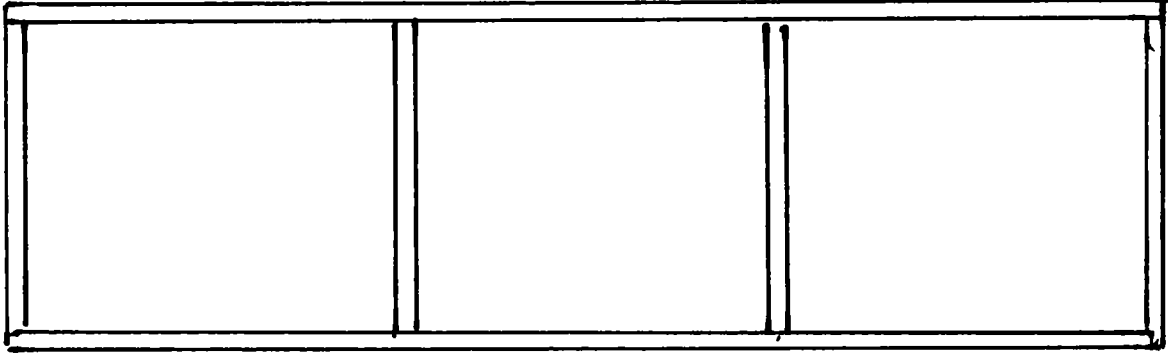
← 40" →



↑ 72" ↓

MAKE 2
2 x 2 FIR S4S FINISHED 1 1/2 x 1 1/2

← 20" →



↑ 72" ↓

MAKE 2

MATERIALS

PART 1 14 LEAKS x 6' of 2x2 FRL S4S $1\frac{1}{2} \times 1\frac{1}{2}$
(= 84'

8 x 37" cross hcl	+	296
8 x 17" cross hcl	+	136
4 x 25"		100
		<hr/>
		532' ~ 44 45'

TOTAL: 129'

1 PIECE 4' x 8' PLYWOOD x $\frac{1}{2}$ "

CUT IN HALF

SCREEN

4' WIDTH x 4 PLYWOOD x 6'

4' W x 25' LONG.

+ APPROX 32 sq ft for top + base

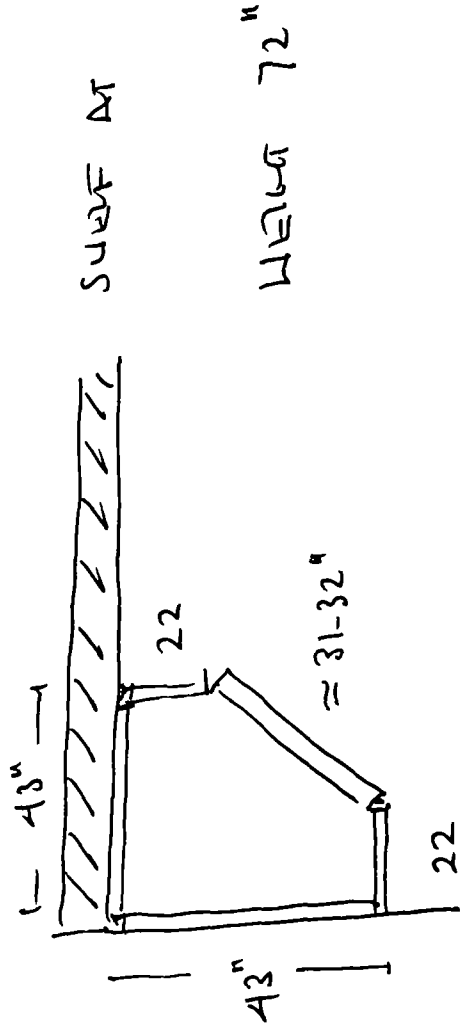
WINKLE

PURIFIED METAL 3722

SW "MICROSCOPY & ULTRA-VIOLET IMAGING" PUT 3713

ROOM DIMENSIONS 127" D x 123" W

SHIELDED ENCLOSURE TO BE LOCATED IN SW CORNER



TOP +
BASE: 1/4" ALUMINUM PLATE

SCREEN FRAME: 2 x 2 S45 WHITE FIL
(LINE TIGHT) K1W TIGHT SHOWN S45
(1 1/2" x 1 1/2" FINISHED)

ALUMINUM SCREEN: PURIFIED 18 x 16 MELD.
4 1/2" x 1 1/2" ROLL \$172 0.011" WIDE
0.021" THICK
= 502 TRANSMISSION

NOTE:
16 MELD COPPER SCREEN, 0.011" WIDE 11 \$1050 | 17H
= 36X HOME EXHAUSTIVE TANK ALUMINUM

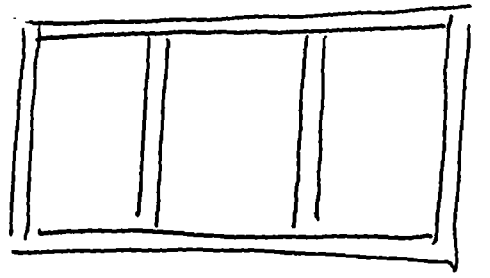
(see other side)

SMB

← 22" →

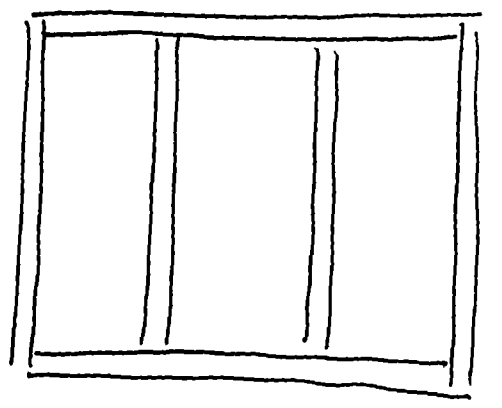
43"

↑
72" ↓



≈ 21"
≈ 21"
≈ 21"

MAVE 2



MAVE 2

Pool