



Newport

Newport Power Meter Drivers

CD Installation Software

Version 2.3.1

Revision Date: October 16, 2008

IMPORTANT NOTES:

The USB drivers on your CD must be installed before the Newport Power Meter is connected to your PC (via USB cable).

Manual: The latest manuals for the Newport Power Meters can be found on Newport Corporation's website (see below), on the product specific page. For your convenience a recent version of the manuals can be found on the CD and will be installed on your PC.

Newport Corp. World Wide Web Server

You can access a variety of Newport Corporation information sources via the Newport Web Server, <http://www.newport.com>.

Technical Support

Please review the User's Manual first if you are experiencing difficulties with the product. The following Technical Support information is listed below if you still need help.

Tel: 1-800-222-6440
Fax: 1-949-253-1479
Email: rma.service@newport.com

CD Contents:

The root folder on the CD contains this readme file and the user's manuals.

The Win32 folder contains setup files for Windows 32-bit operating systems. It also contains setup files for the .NET Framework 2.0 and the Windows Installer 3.1 in their respective folders.

Installation:

This software may be installed on the following Microsoft Windows 32-bit operating systems: Windows 2000 SP4 and later, Windows XP, and Windows Vista.

The prerequisites for installing this software include the .NET Framework 2.0 and the Windows Installer 3.1. Copies of this software are included on the CD.

The setup program should start automatically. If it does not, then run Setup.exe from the Win32 folder on the CD.

If a "Security Alert – Driver Installation" message is displayed (during setup or soon after the setup program is closed), then verify that the driver software is "WinDriver" and it is published by "Jungo LTD". If so, then click "Yes", otherwise click "No".

After all required setup programs have been run and all setup related message boxes have been closed, your software is installed and is ready for use.

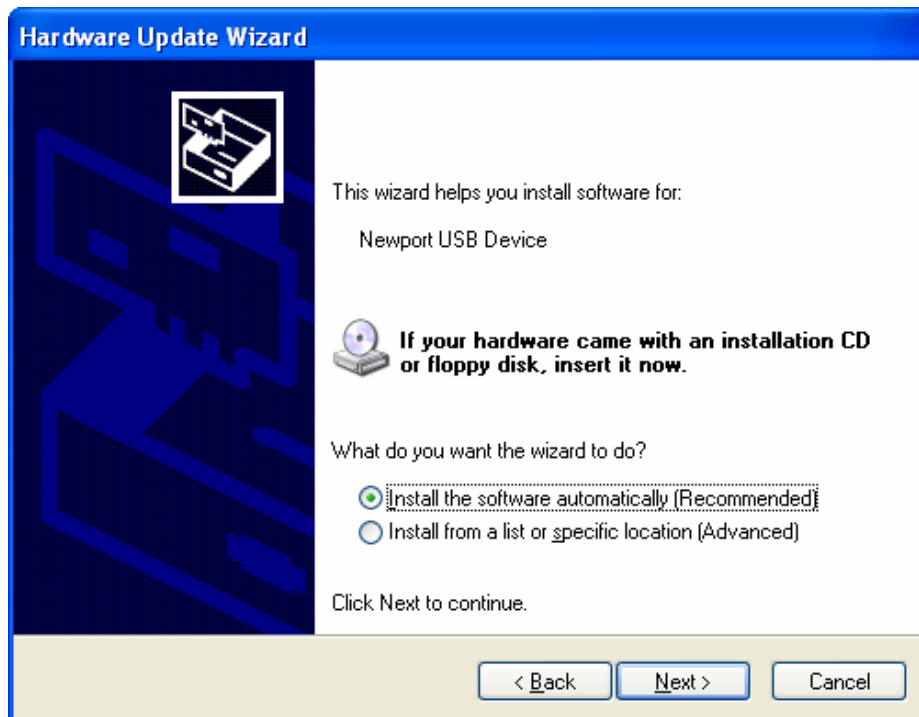
Updating Drivers:

If you are upgrading from version 2.0.3 or older to version 2.1.0 or newer then you must update your drivers after installation. After the software is installed successfully, then connect the USB cable to your power meter and turn on the power meter. Then perform the following steps on your PC:

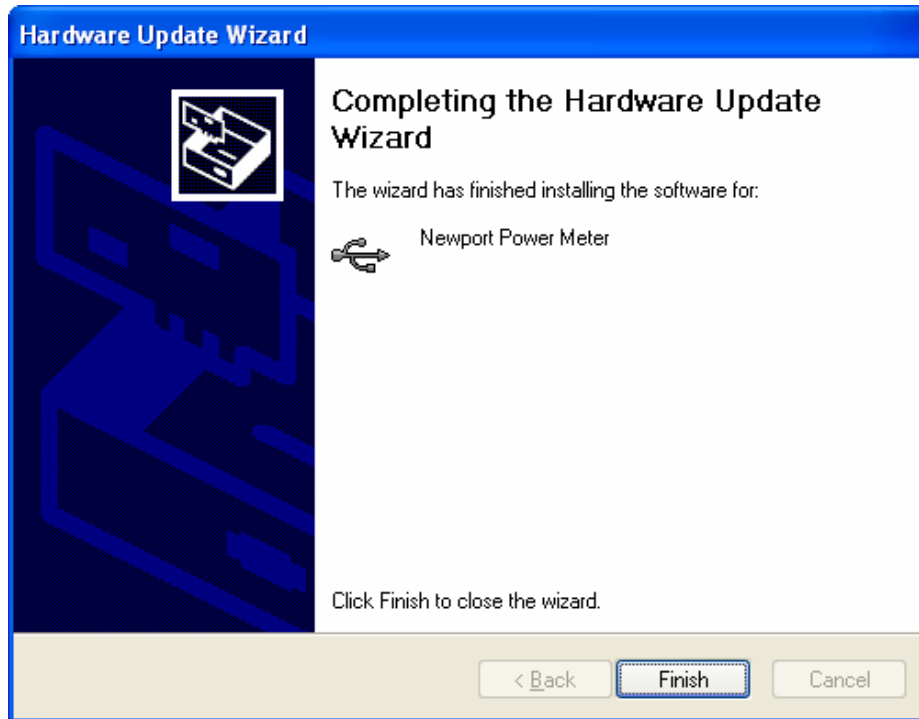
1. Open the Windows Device Manager and expand the node containing the Universal Serial Bus (USB) controllers.
2. Right click the node labeled "Newport USB Device" and select "Update Driver..." to run the Hardware Update Wizard.
3. When asked, "Can Windows connect to Windows Update to search for software?" respond by selecting "No, not this time" and click the Next button.



4. When asked, “What do you want the wizard to do?” respond by clicking the radio button labeled “Install the software automatically (Recommended)” and then click the Next button.



5. It should begin updating the driver to “Newport Power Meter”. Click the Finish button when the wizard has finished installing the software for the “Newport Power Meter”. If this step was successful then your USB drivers have been updated. Skip the rest of these steps.



6. If step #4 did not work properly then repeat steps 1 – 3 and then when asked, “What do you want the wizard to do?” respond by clicking the radio button labeled “Install from a list or specific location (Advanced)” and then click the Next button.
7. Select the radio button labeled “Don’t search. I will choose the driver to install.” and then click the Next button.
8. Select “Newport Power Meter” and then click the Next button.
9. Go to step #5.

Installed Files:

Software Drivers

Model 1918, 1931, 1936, 2931, 2936 LabVIEW 6.x
Model 1918, 1931, 1936, 2931, 2936 LabVIEW 7.x
Model 1918, 1931, 1936, 2931, 2936 LabVIEW 8.x
Model 1918, 1931, 1936, 2931, 2936 USB Drivers

Version 2.0
Version 2.0
Version 2.0
Version 2.1.9

Manuals and Startup Guides

Model 1918 User’s Manual

Rev. D

Model 1918 Startup Guide	Rev. A
Model 1931, 2931 User's Manual	Rev. B
Model 1936, 2936 User's Manual	Rev. B
Model 1931, 1936, 2931, 2936 Startup Guide	Rev. C

Programming Samples

Visual Basic GPIB/USB Terminal	Rev. A
C# .NET USB Terminal	Version 1.1
C# .NET Data Store	Version 1.1

Windows Application

Newport Power Meter Application	Version 2.3.1
--	----------------------

What's New

The following is a list of added features and corrections to Newport Power Meter Drivers CD:

VERSION 2.3.1 October 16, 2008

Fixes:

1. Updated the documentation.

Feature Enhancements:

1. None.

VERSION 2.3.0 June 3, 2008

Fixes:

1. None.

Feature Enhancements:

1. Added support for the 1936 / 2936.
2. Updated USBDLL.dll to allow opening devices by product ID.
3. Added a sample data store application in Visual C#.

VERSION 2.2.0 November 29, 2007

Fixes:

1. Added M530DLL.dll for the LabVIEW sample drivers.
2. Updated USBDLL.dll to version 2.1.4.

Feature Enhancements:

1. New installation folder structure and shortcuts.
2. Added a sample terminal application in Visual C#.

VERSION 2.1.0 April 4, 2007

Fixes:

1. None.

Feature Enhancements:

1. Modified USB drivers to improve USB communication throughput.
2. Added compatibility with 64-bit operating systems.

VERSION 2.0.3 Jun. 21, 2006

Fixes:

1. Fixed 1930 Console dropping last character.
2. Fixed Units and Modes to match modes for all supported models.
3. Disabled main channel updates when Dos Console is show in application.

Feature Enhancements:

1. Added support for model 1931.
2. Changed function of search for devices in Options to only search when Update button is clicked.

VERSION 2.0.0 Mar. 7, 2006

Fixes:

1. Added support for new USB dll and 1935/2935 system driver, and support for 1930/2930.

Feature Enhancements:

1. Added USB address selection when not connected.
2. Added dll support for multiple instruments.

VERSION 1.2.3 Jan. 11, 2006

Fixes:

1. Fixed Channel 2 of power meter not getting mode set correctly in options.

Feature Enhancements:

1. Added Menu item and shortcut for Connect.

VERSION 1.2.2 Dec. 21, 2005

Fixes:

1. Updated units and pull-downs to match 2935 settings.

Feature Enhancements:

1. Added display of connected unit name to title, when connected.
2. Improved notification messages for lost connection errors.

VERSION 1.2.1 Dec. 14, 2005

Fixes:

1. Modified Connection to allow both 2930 and 2935 connection to the USB dll, 1935 currently is fixed at Address 2, for this to work.

Feature Enhancements:

1. Added Error display.
2. Removed setting Attenuator setting for instruments that do not support it.

VERSION 1.2.0 Dec. 1, 2005

Fixes:

1. Modified LabVIEW sample to initialize outside main loop.

Feature Enhancements:

1. Added support for 1935, 2935

VERSION 1.1.0 June 22, 2004

Fixes:

1. None.

Feature Enhancements:

1. None.

©2003—2008 Newport Corporation. All rights reserved.

This document is for informational purposes only. Newport Corp. makes no warranties, express or implied, in this document. LabVIEW is a registered trademark of National Instruments Corporation.