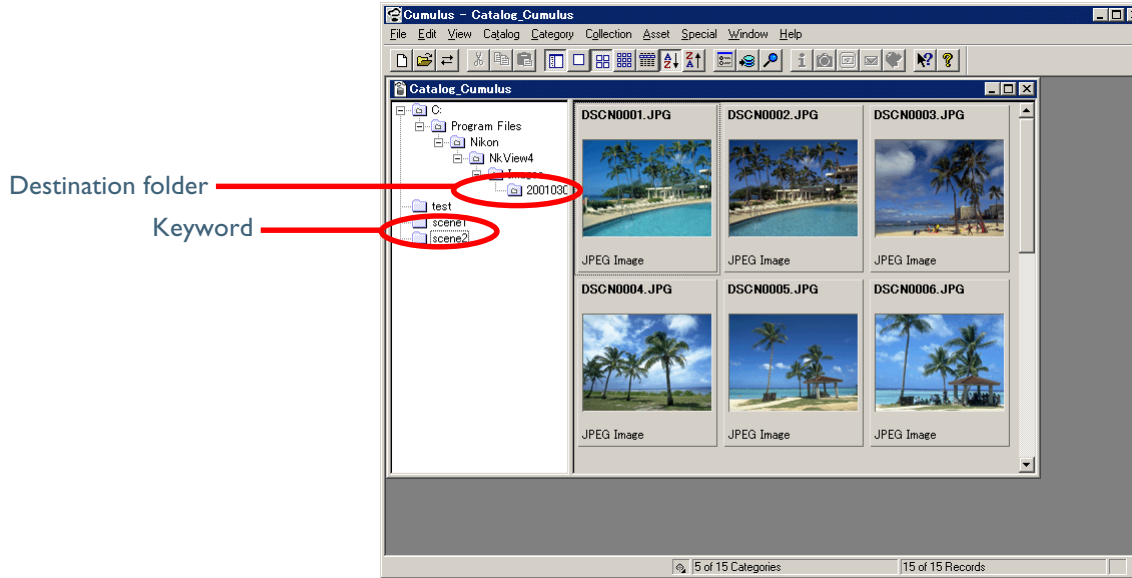


About Cumulus 5.0

About Cumulus 5.0

Using image database software such as Cumulus 5.0, you can catalog or register images as they are transferred to your computer, making it much easier to keep track of your photographs. Use the Database tab of the Preferences dialog (🔍 40) to select Cumulus as the image database software. If Cumulus is selected, Cumulus will start automatically when images are transferred to the computer using Nikon View 4. Images will be registered in a catalog file within Cumulus, which is also specified using the Database tab. Note that Cumulus 5.0 will also start any time you open a catalog file; a window like that shown below will be displayed. Once Cumulus is running, if you select the destination folder specified in the Transfer tab of the Preferences dialog (🔍 35), the images already transferred to that folder will be displayed. If you select a keyword listed in the File information tab of the Preferences dialog (🔍 41), a list of transferred files with the chosen keyword will be displayed.

If you want to install Cumulus 5.0, please turn to the [next page](#).



[Click here](#)  to return to the previous screen.

Cumulus 5.0

The demo version of Cumulus 5.0 allows a maximum of fifty images to be registered in a single catalog. No more than two catalogs can be opened at the same time. The Limited Edition of Cumulus 5.0 allows a maximum of 2000 images to be registered in a single catalog. No more than two catalogs can be opened at the same time.

Install Cumulus 5.0

Please install Cumulus 5.0 before installing Nikon View 4.

COOLPIX5000/995/885/775/990/880

Click **Cumulus 5.0** in the Bundle Software tab of the Welcome window to start the **Cumulus 5.0** installer. Follow the on-screen instructions to install **Cumulus 5.0**.

DIx/DIh

Insert the **Cumulus 5 Single User LE** CD-ROM (included with Nikon View 4) into the CD-ROM drive, and install **Cumulus 5.0**.

DI

DI users may purchase Cumulus 5.0 separately, if desired. (Please note that **Cumulus 5.0** is not included with Nikon View 4 when Nikon View 4 is purchased as part of Nikon Capture 2.)

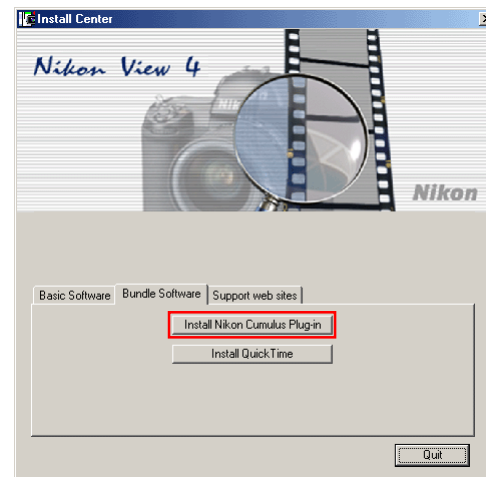
Canto Software : <http://www.canto.com/>

Install the Nikon Cumulus Plug-in

If you installed Cumulus 5.0 image database software, you can install the Nikon Cumulus Plug-in.

Step 1 : Start the installer

Click **Install Nikon Cumulus Plug-in** in the Bundle Software tab of the Welcome window to begin installation of the Nikon Cumulus Plug-in.



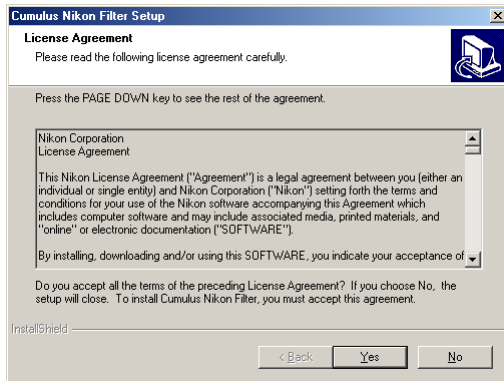
Click [here](#)  to proceed to the next step.

The Nikon Cumulus Plug-in

This plug-in allows Cumulus 5.0 to handle image information from Nikon digital cameras.

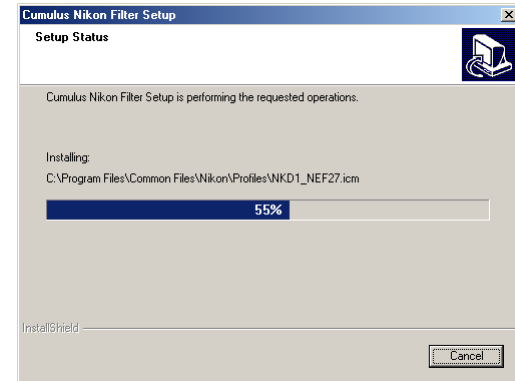
Step 2 :Accept the license agreement

The license agreement is displayed at the start of installation. After reading the agreement, click **Yes** to continue installation.



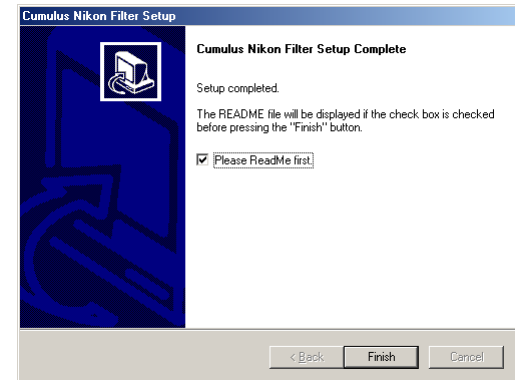
Step 3 : Installation

While installation is in progress, the dialog shown below will be displayed.



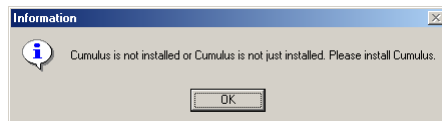
Step 4 :View the ReadMe file

When installation is complete, the dialog shown below will be displayed. Confirm that **Please ReadMe first** is checked and click **Finish** to display the ReadMe file. Take a few moments to view this file, which may contain important information that could not be included in this manual.



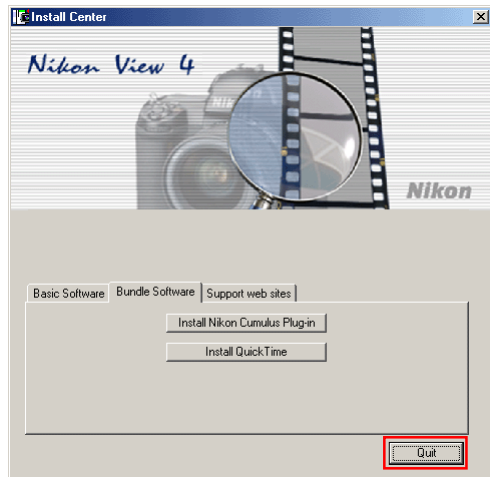
If Cumulus 5.0 Is Not Installed

If you attempt to install the Nikon Cumulus Plug-in when Cumulus 5.0 is not installed, the message shown below will be displayed. Install the Nikon Cumulus Plug-in after installing Cumulus.



Step 5 : Exit the installer

Click the **Quit** button in the Welcome window to exit the installer.

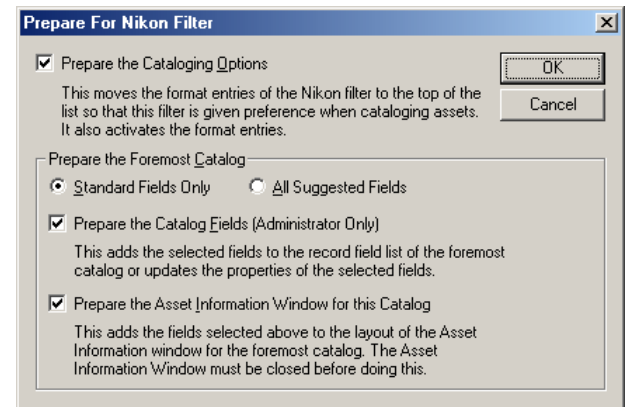


Nikon Cumulus Plug-in Settings

After installing the Nikon Cumulus Plug-in (Nikon filter), start Cumulus 5.0 and follow the instructions below.

Step 1

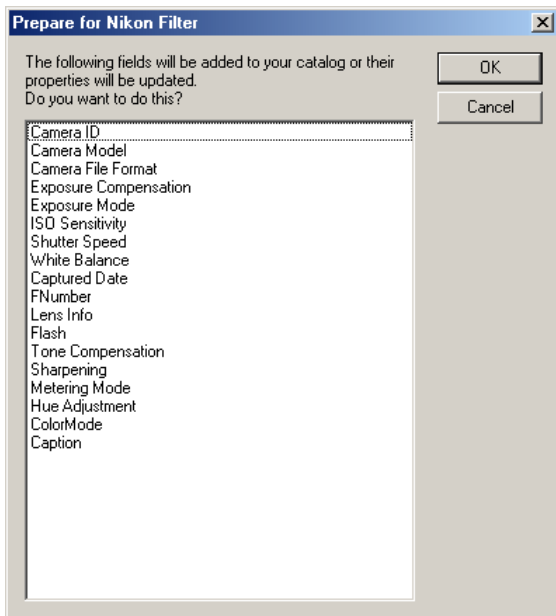
Select **Prepared for Nikon Filter** from the Catalog menu. The Prepare for Nikon Filter dialog box will appear. Check that the boxes are checked as shown below, and click **OK**. (Cataloging options for file formats are prepared automatically, and can be confirmed in Step 4.)



[Click here](#)  to proceed to the next step.

Step 2

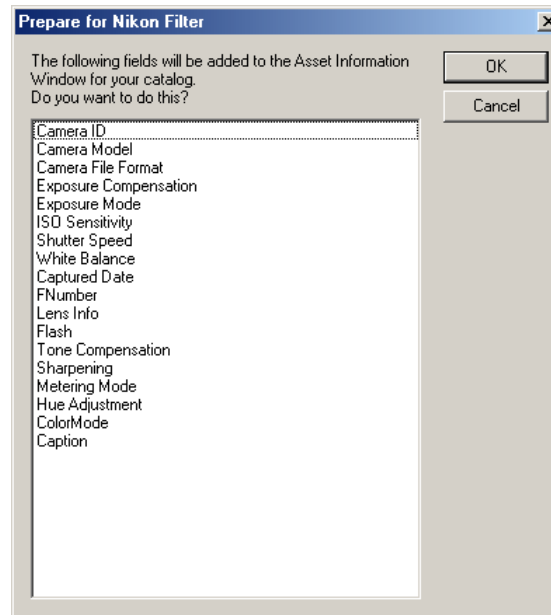
A dialog box showing fields to be added to the asset information window will appear. Check that all the fields are displayed as shown below, and click **OK**.



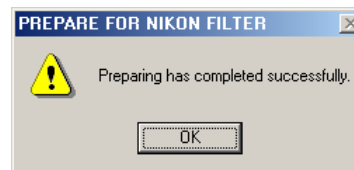
- Camera ID
- Camera Model
- Camera File Format
- Exposure Compensation
- Exposure Mode
- ISO Sensitivity
- Shutter Speed
- White Balance
- Captured Date
- FNumber
- Lens Info
- Flash
- Tone Compensation
- Sharpening
- Metering Mode
- Hue Adjustment
- ColorMode
- Caption

Step 3

A dialog box will appear to confirm the fields to be added to the asset information window. Click **OK**.



When the window shown below appears, click **OK**.

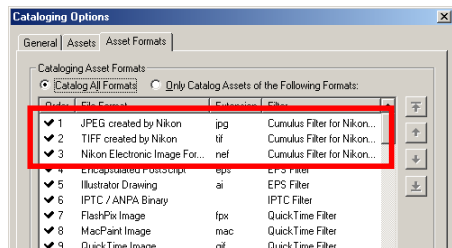


The asset information window fields, and cataloging options for file formats have now been prepared.

[Click here](#)  to proceed to the next step.

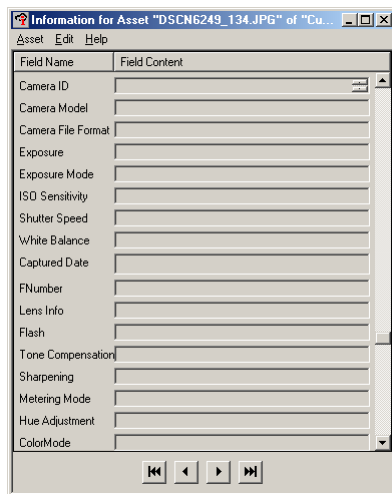
Step 4

Select **cataloging options** from the catalog menu. The dialog shown below will appear. Check that **Nikon Electronic Image Format**, **TIFF created by Nikon**, and **JPEG created by Nikon** are the first three items on the list. (This confirms the settings carried out by the computer in Step 1.)



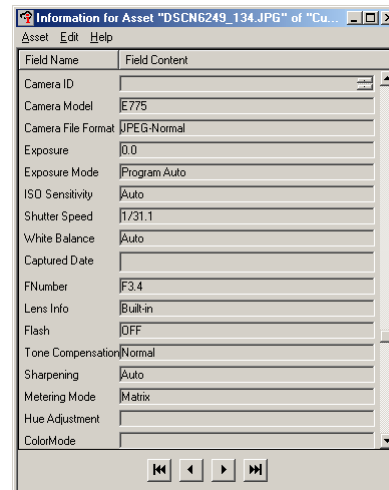
Step 5

Select **Information** from the Asset Menu. The asset information dialog shown below will appear. Check that the information in each asset information field is correctly displayed.



Step 6

Select all currently displayed images, then select **Update record > Always** from the catalog menu to update the information fields.



When creating a new catalog, repeat all the above steps (1-6).

To return to the *Install Bundled Software* screen:

Windows users click [here](#)

Macintosh users click [here](#)