

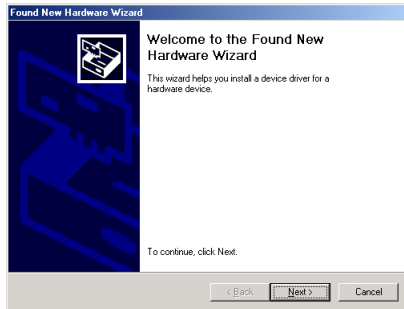
Registering the COOLPIX990/880 under Windows 2000 Professional

Installing Windows Hardware Drivers for the COOLPIX990/880

The following explanation uses COOLPIX990 as an example. Registration for the COOLPIX880 follows exactly the same procedure. The dialog boxes may however show slight differences.

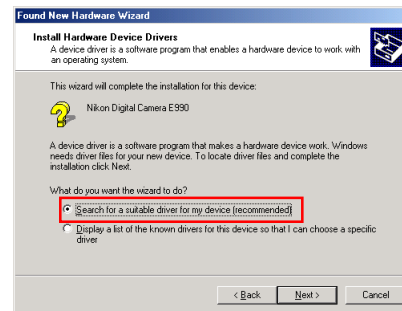
Step 1

Install Nikon View 4 and restart your computer. Once Windows has restarted, turn on the camera and connect it to the computer using a USB cable. The opening dialog for the Windows hardware wizard will be displayed; click **Next**.



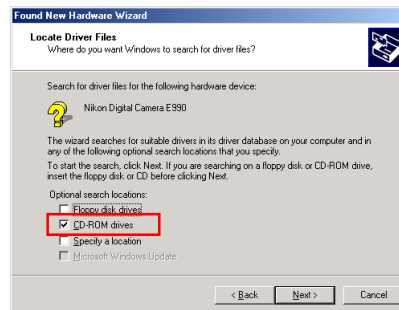
Step 2

Select "Search for a suitable driver for my device(recommended)", and click **Next**.



Step 3

Holding down the shift key to prevent the Welcome dialog from opening automatically, insert the Nikon View 4 CD into the CD-ROM drive. Select **CD-ROM drives** and click **Next**.



If the Welcome dialog appears when the CD-ROM is inserted, close the dialog by clicking the **Quit** button.

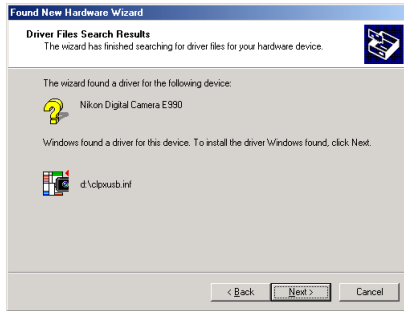
Log On

You will need to log on as "Administrator" to register the COOLPIX990/880

[Click here](#)  to proceed to the next step.

Step 4

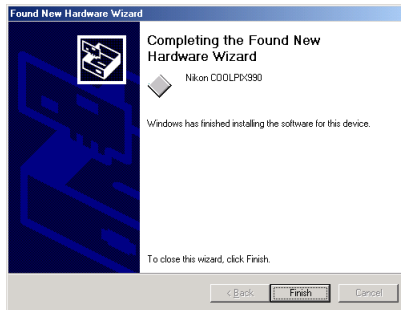
The dialog shown below will be displayed; click **Next**.



If the message, “Windows was unable to find a suitable driver for this device,” is displayed, this may indicate that the Nikon View 4 CD was not correctly inserted in the CD-ROM drive or that the correct search location was not specified. Click **Back** to return to the dialog shown in Step 3, where you can confirm that the correct location has been specified.

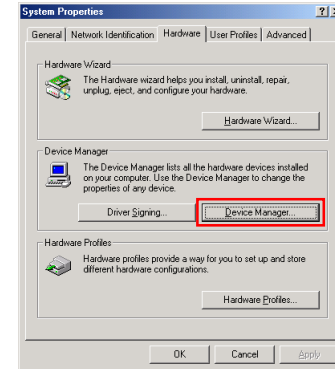
Step 5

The dialog shown below will be displayed; click **Finish**.



Step 6

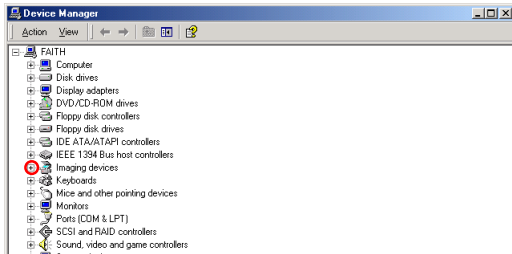
Once registration is complete, check that the camera has been correctly registered with the system. Click the My Computer icon on the desktop with the right mouse button and select Properties from the menu that appears to display the System Properties dialog. Open the Hardware tab and click the **Device Manager...** button in the Device Manager section.




Click [here](#)  to proceed to the next step.

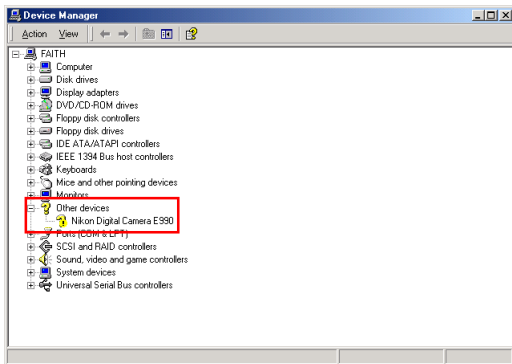
Step 7

The Device Manager will be displayed. After confirming that “Imaging device” is listed in the Device Manager, click the “+” sign to its left.



If Imaging Device does not appear

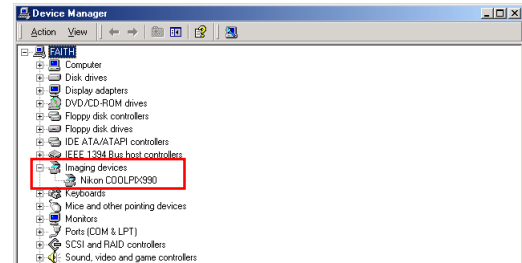
If “Nikon Digital Camera E990” is listed under “Other Devices”, click [here](#) .



If “Imaging Device” is not listed in the Device Manager and “Nikon Digital Camera E990” is not listed under Other Devices, re-start your computer and return to [Step 1](#).

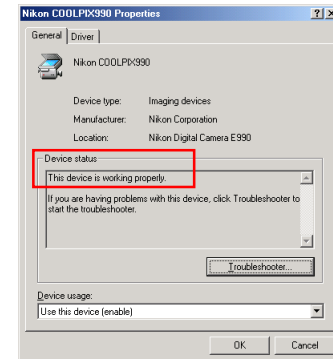
Step 8

After confirming that “NikonCOOLPIX990” is listed under “Imaging device,” double-click the listing to open the Properties window.



Step 9

The Nikon COOLPIX990 Properties dialog will be displayed. Click the General tab and confirm that “This device is working properly” appears under “Device status.” Click **OK**.



Close the Device Manager, then click **OK** to close the System Properties window. Device registration is now complete.

Click [here](#)  to return to the Nikon View 4 Reference Manual.