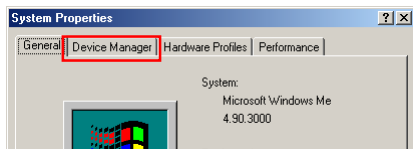


What to Do if the Hardware Wizard is not Displayed

- Windows Millennium Edition (Me) -

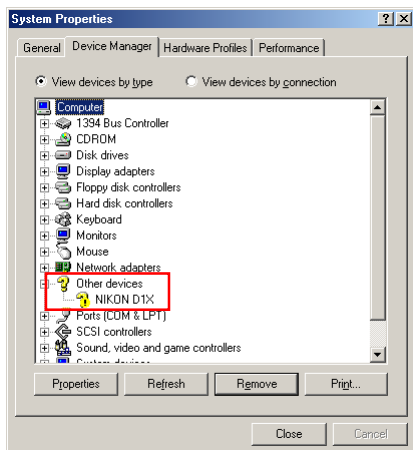
Step 1

Click the My Computer icon on the desktop with the right mouse button and select Properties from the menu that appears. The System Properties dialog will be displayed; click the Device Manager tab.



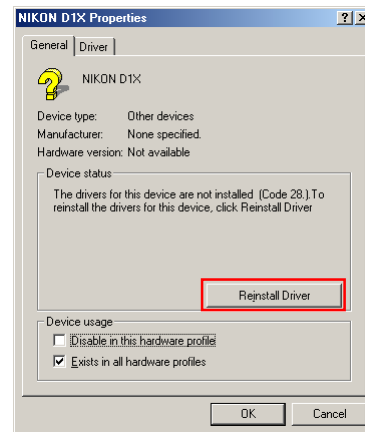
Step 2

The Device Manager sheet will be displayed. Double-click the listing for the NIKON DIX (DI/DIH) that appears under “Other Devices” or “Miscellaneous Devices.”



Step 3

The NIKON DIX (DI/DIH) Properties dialog will be displayed. Open the General tab and click **Reinstall Driver...**



[Click here](#)  to proceed to the next step.

Step 4

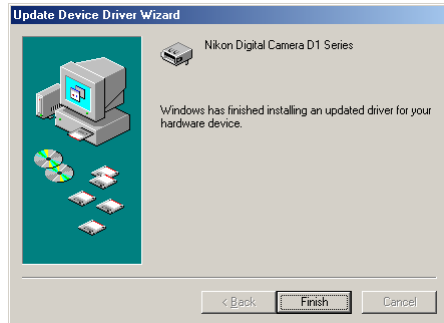
The Windows update device driver wizard will be displayed. Holding down the shift key to prevent the Welcome dialog from opening automatically, insert the Nikon View 4 CD into the CD-ROM drive. Confirm that “Automatic search for a better driver (Recommended)” is selected and click **Next**. The wizard will automatically update the device drivers.



If the Welcome dialog appears when the CD-ROM is inserted, close the dialog by clicking the **Quit** button.

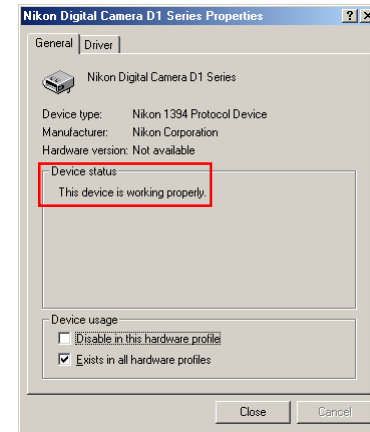
Step 5

The dialog shown below will be displayed; click **Finish**.



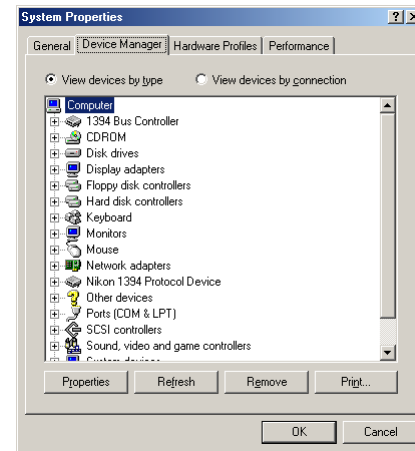
Step 6

Confirm that “This device is working properly” appears under “Device status” in the General Tab of the Nikon Digital Camera D1 Series Properties dialog. Click **Close**.



Step 7

Click **OK** to close the System Properties window.



Click [here](#)  to return to the Nikon View 4 Reference Manual.