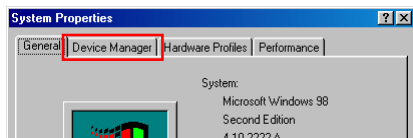


What to Do if the Hardware Wizard is not Displayed

- Windows 98 Second Edition (SE) -

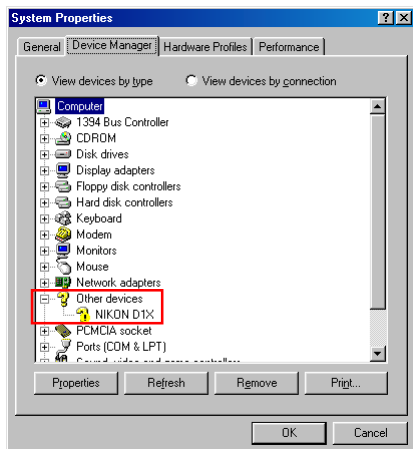
Step 1

Click the My Computer icon on the desktop with the right mouse button and select Properties from the menu that appears. The System Properties dialog will be displayed; click the Device Manager tab.



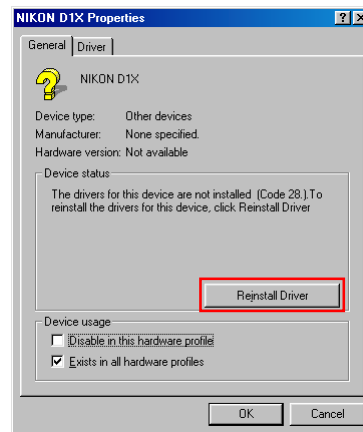
Step 2

The Device Manager sheet will be displayed. Double-click the listing for the NIKON DIX (DI/DIH) that appears under “Other Devices” or “Miscellaneous Devices.”



Step 3

The NIKON DIX (DI/DIH) Properties dialog will be displayed. Open the Driver tab and click **Reinstall Driver**.



[Click here](#)  to proceed to the next step.

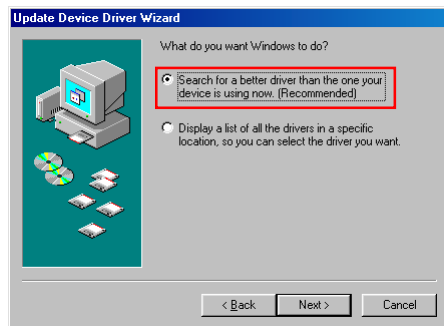
Step 4

The Windows update device driver wizard will be displayed; click **Next**.



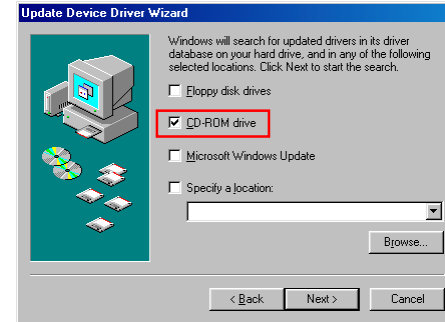
Step 5

The dialog shown below will be displayed. Select “Search for a better driver than the one your device is using now.(Recommended)” and click **Next**.



Step 6

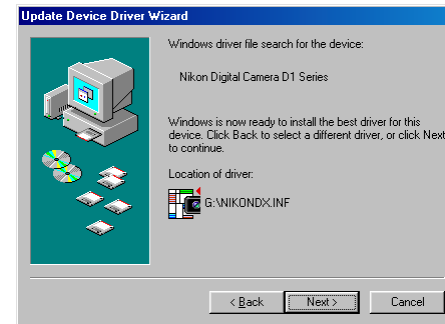
The dialog shown below will be displayed. Holding down the shift key to prevent the Welcome dialog from opening automatically, insert the Nikon View 4 CD into the CD-ROM drive. Select **CD-ROM drive** and click **Next**.



If the Welcome dialog appears when the CD-ROM is inserted, close the dialog by clicking the **Quit** button.

Step 7

A dialog will be displayed stating that Windows has found the drivers for “Nikon Digital Camera DI Series”; click **Next**.

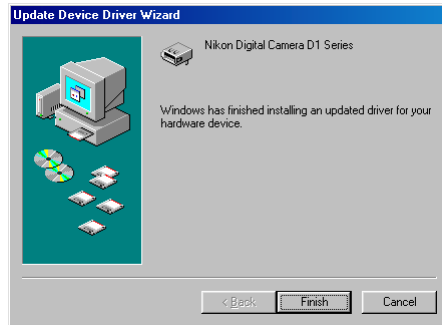


If the message, “Windows was unable to find a suitable driver for this device,” is displayed, this may indicate that the Nikon View 4 CD was not correctly inserted in the CD-ROM drive or that the correct search location was not specified. Click **Back** to return to the dialog shown in Step 6, where you can confirm that the correct location has been specified.

[Click here](#)  to proceed to the next step.

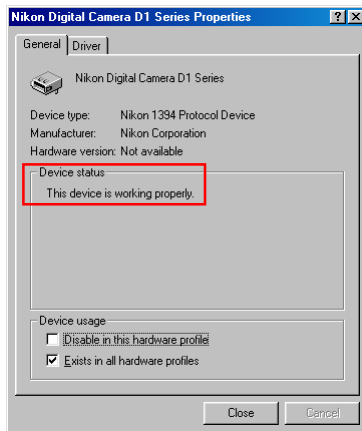
Step 8

The dialog shown below will be displayed; click **Finish**.



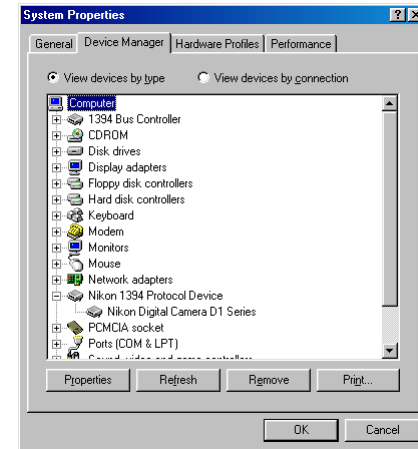
Step 9

Confirm that “This device is working properly” appears under “Device status” in the General Tab of the Nikon Digital Camera D1 Series Properties dialog. Click **Close**.



Step 10

Click **OK** to close the System Properties window.



Click [here](#)  to return to the Nikon View 4 Reference Manual.