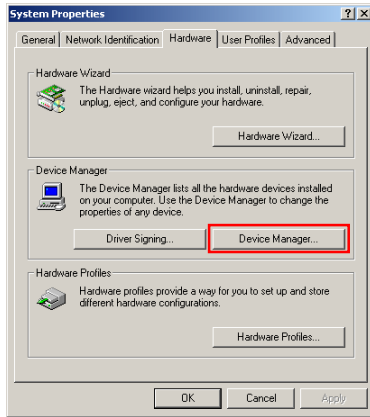


# What to Do if the Hardware Wizard is not Displayed

- Windows 2000 Professional-

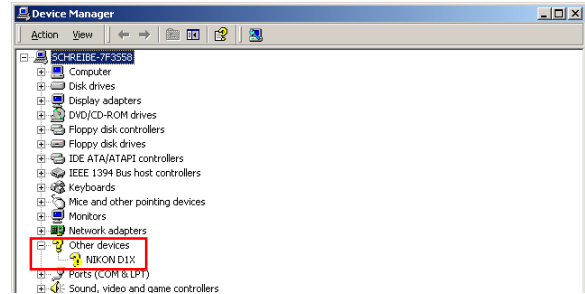
## Step 1

Click the My Computer icon on the desktop with the right mouse button and select Properties from the menu that appears to display the System Properties dialog. Open the Hardware tab and click the **Device Manager...** button in the Device Manager section.



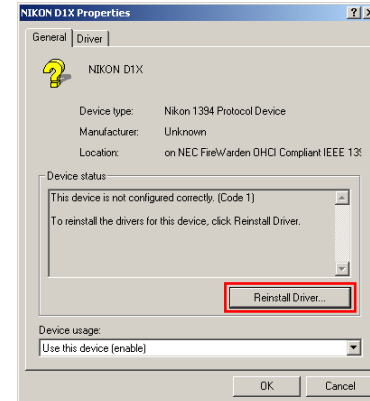
## Step 2

The Device Manager will be displayed. Double-click the listing for the NIKON DI (DIX/DIH) that appears under “Other Devices” or “Miscellaneous Devices”.



## Step 3

Open the General tab and click **Reinstall Driver...**



[Click here](#)  to proceed to the next step.

## Step 4

The Windows update device driver wizard will be displayed; click **Next**.



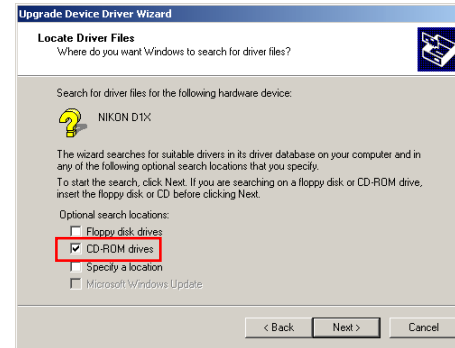
## Step 5

Select the search option and click **Next**.



## Step 6

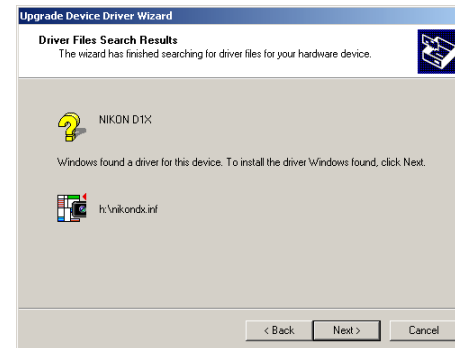
The dialog shown below will be displayed. Holding down the shift key to prevent the Welcome dialog from opening automatically, insert the Nikon View 4 CD into the CD-ROM drive. Select **CD-ROM drives** and click **Next**.



If the Welcome dialog appears when the CD-ROM is inserted, close the dialog by clicking the **Quit** button.

## Step 7

The dialog shown below will be displayed; click **Next**.



If the message, “Windows was unable to find a suitable driver for this device,” is displayed, this may indicate that the Nikon View 4 CD was not correctly inserted in the CD-ROM drive or that the correct search location was not specified. Click **Back** to return to the dialog shown in Step 6, where you can confirm that the correct location has been specified.

Click [here](#)  to proceed to the next step.

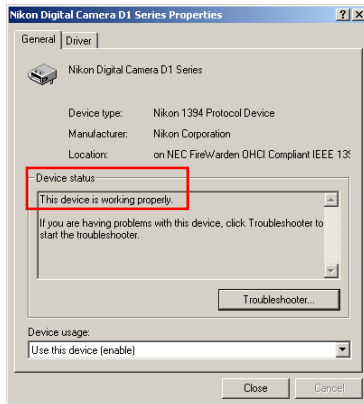
## Step 8

The dialog shown below will be displayed; click **Finish**.



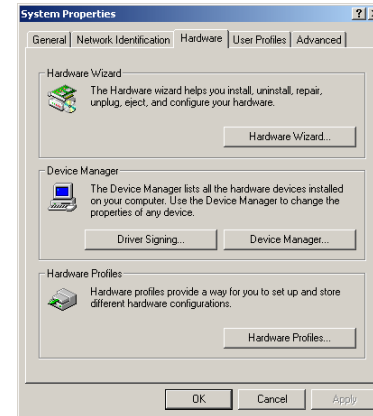
## Step 9

Confirm that “This device is working properly” appears under “Device status” in the General Tab of the Nikon Digital Camera D1 Series Properties dialog. Click **Close**.



## Step 10

Close the Device Manager, then click **OK** to close the System Properties window.



Click [here](#)  to return to the Nikon View 4 Reference Manual.