

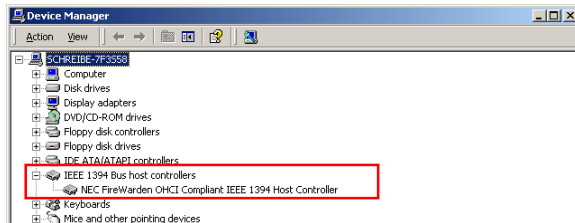
# Registering the DI/DIx/DIH under Windows 2000 Professional

Installing Windows Hardware Drivers for the DI/DIx/DIH

## Before You Begin

Confirm that your OHCI-compliant IEEE 1394 interface board or card has been correctly registered with the system.

Click the My Computer icon on the desktop with the right mouse button and select Properties from the menu that appears to display the System Properties dialog. Open the Hardware tab and click the **Device Manager**... button in the Device Manager section.



The bus controller for your IEEE 1394 board or card should be listed under “1394 Bus Host Controller”

If “1394 Bus Host Controller” is not listed in the Device Manager, or if your IEEE 1394 interface board or card is listed as an unknown or miscellaneous device or is preceded by a red or yellow warning icon, follow the instructions in the manual provided with the board to ensure that the drivers are properly installed.


## Log On

You will need to log on as “Administrator” to register the DI/DIx/DIH.

## Step 1

Install Nikon View 4 and restart your computer. Once Windows has restarted, turn on the DI (DIx/DIH), make sure that the mode dial is set to PC, and then connect the camera to the computer using an IEEE 1394 cable. The opening dialog for the Windows hardware wizard will be displayed; click **Next**.



If the above dialog does not appear, click [here](#)  to re-install the device drivers.

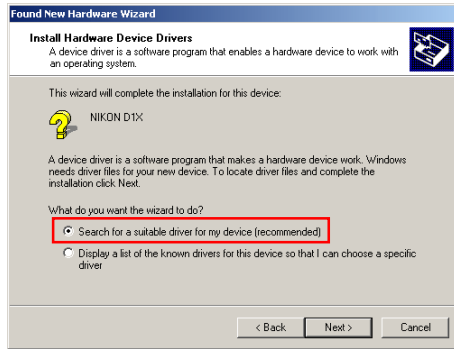
Click [here](#)  to proceed to the next step.

## Updating Drivers for the DI

If you are already using the DI with Nikon View DX or Nikon Capture, you will need to update the camera drivers. Click [here](#) .

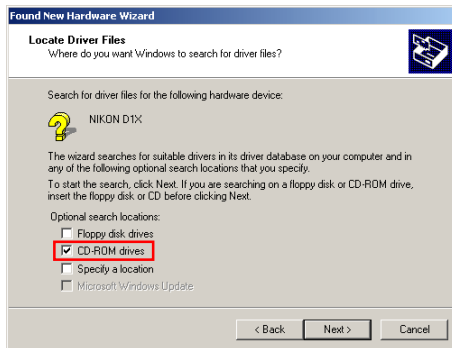
## Step 2

Select the search option and click **Next**.



## Step 3

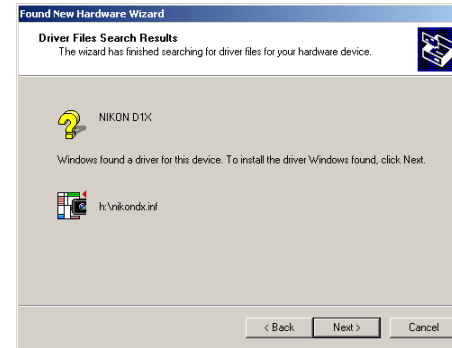
Holding down the shift key to prevent the Welcome dialog from opening automatically, insert the Nikon View 4 CD into the CD-ROM drive. Select **CD-ROM drives** and click **Next**.



If the Welcome dialog appears when the CD-ROM is inserted, close the dialog by clicking the **Quit** button.

## Step 4

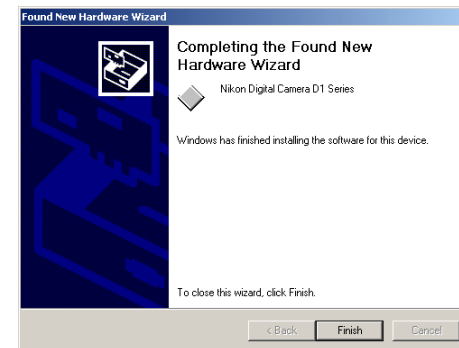
The dialog shown below will be displayed; click **Next**.



If the message, “Windows was unable to find a suitable driver for this device,” is displayed, this may indicate that the Nikon View 4 CD was not correctly inserted in the CD-ROM drive or that the correct search location was not specified. Click **Back** to return to the dialog shown in Step 3, where you can confirm that the correct location has been specified.

## Step 5

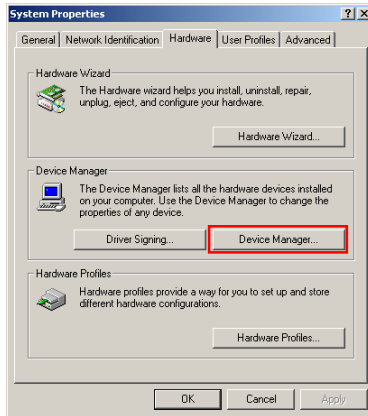
The dialog shown below will be displayed; click **Finish**.



Click [here](#)  to proceed to the next step.

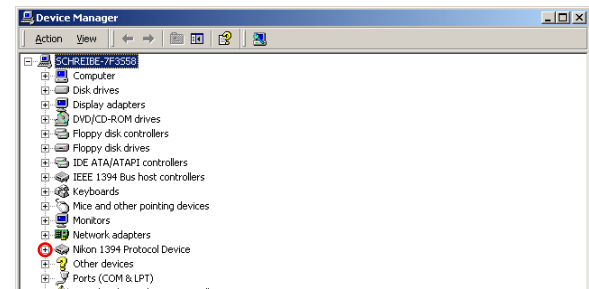
## Step 6

Once registration is complete, check that the DI (DI<sub>X</sub>/DI<sub>H</sub>) has been correctly registered with the system. Click the My Computer icon on the desktop with the right mouse button and select Properties from the menu that appears to display the System Properties dialog. Open the Hardware tab and click the **Device Manager...** button in the Device Manager section.




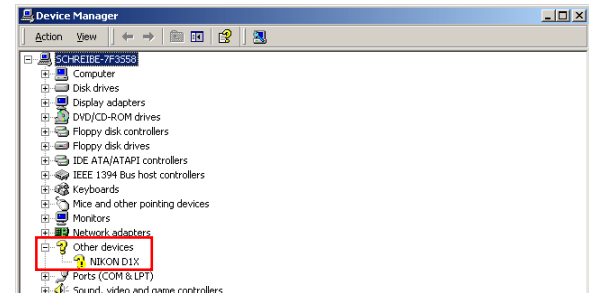
## Step 7

The Device Manager will be displayed. After confirming that “Nikon I394 Protocol Device” is listed in the Device Manager, click the “+” sign to its left.



**If “Nikon I394 Protocol Device” does not appear**

If “NIKON DIX(DI/DIH)” is listed under “Other Devices”, click [here](#) .

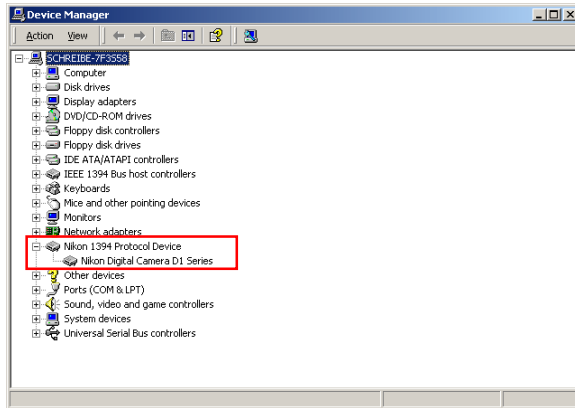


If “Nikon I394 Protocol Device” is not listed in the Device Manager and “NIKON DIX(DI/DIH)” is not listed under Other Devices, re-start your computer and return to [Step 1](#).

Click [here](#)  to proceed to the next step.

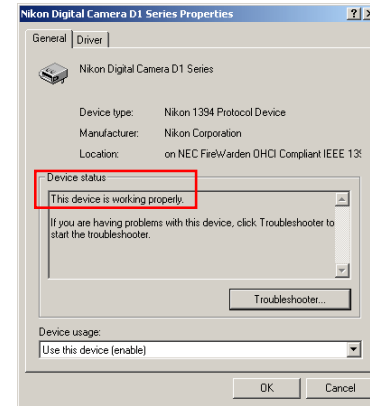
## Step 8

After confirming that “Nikon Digital Camera D1 Series” is listed under “Nikon 1394 Protocol Device,” double-click the listing to open the Properties window.



## Step 9

The Nikon Digital Camera D1 Series Properties dialog will be displayed. Click the General tab and confirm that “This device is working properly” appears under “Device status”. Click **OK**.



Close the Device Manager, then click **OK** to close the System Properties window. Device registration is now complete.

Click [here](#)  to return to the Nikon View 4 Reference Manual.