

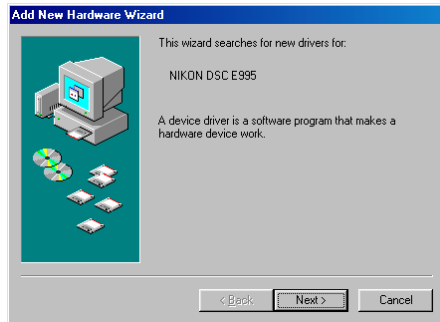
Registering the COOLPIX5000/995/885/775 under Windows 98/98 Second Edition (SE)

Installing Windows Hardware Drivers for the COOLPIX5000/995/885/775

The following explanation uses COOLPIX995 as an example. Registration for the COOLPIX5000, COOLPIX885 and the COOLPIX775 follows exactly the same procedure. The dialog boxes may however show slight differences.

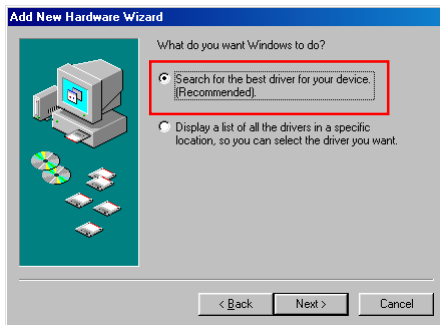
Step 1

Install Nikon View 4 and restart your computer. Once Windows has restarted, turn on the camera and connect it to the computer using a USB cable. The opening dialog for the Windows hardware wizard will be displayed; click **Next**.



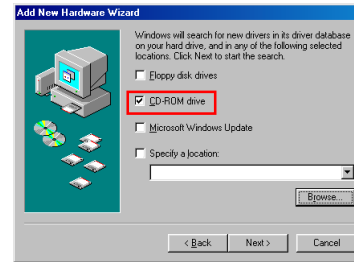
Step 2

Select the search option and click **Next**.



Step 3

Holding down the shift key to prevent the Welcome dialog from opening automatically, insert the Nikon View 4 CD into the CD-ROM drive. Select **CD-ROM drive** and click **Next**.



If the Welcome dialog appears when the CD-ROM is inserted, close the dialog by clicking the **Quit** button.

Step 4

A dialog will be displayed stating that Windows has found the drivers for "Nikon Digital Camera Mass Storage Driver"; click **Next**.

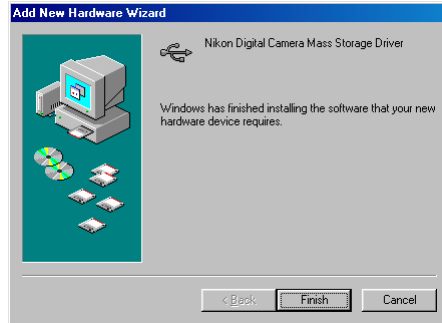


If the message, "Windows was unable to find a suitable driver for this device," is displayed, this may indicate that the Nikon View 4 CD was not correctly inserted in the CD-ROM drive or that the correct search location was not specified. Click **Back** to return to the dialog shown in Step 3, where you can confirm that the correct location has been specified.

Click [here](#)  to proceed to the next step.

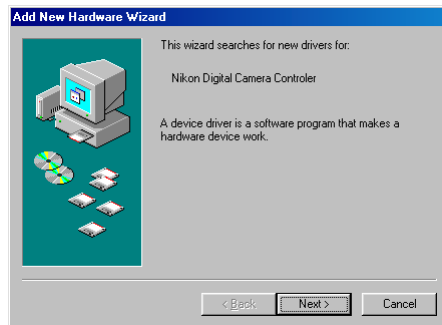
Step 5

The dialog shown below will be displayed; click **Finish**.



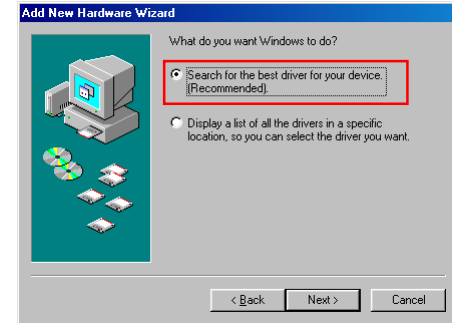
Step 6

The Windows hardware wizard will now start installation of the Nikon Digital Camera Controller with the dialog shown below. Click **Next**.



Step 7

Select the search option and click **Next**.



Step 8

Holding down the shift key to prevent the Welcome dialog from opening automatically, insert the Nikon View 4 CD into the CD-ROM drive. Select **CD-ROM drive** and click **Next**.



If the Welcome dialog appears when the CD-ROM is inserted, close the dialog by clicking the **Quit** button.

Click [here](#)  to proceed to the next step.

Step 9

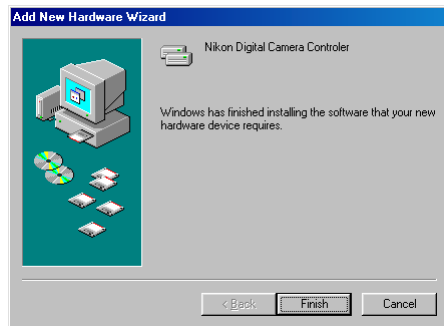
A dialog will be displayed stating that Windows has found the drivers for “Nikon Digital Camera Controller”; click **Next**.



If the message, “Windows was unable to find a suitable driver for this device,” is displayed, this may indicate that the Nikon View 4 CD was not correctly inserted in the CD-ROM drive or that the correct search location was not specified. Click **Back** to return to the dialog shown in Step 8, where you can confirm that the correct location has been specified.

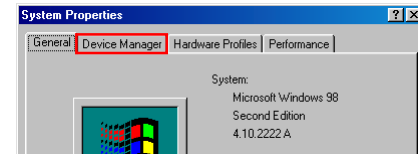
Step 10

The dialog shown below will be displayed; click **Finish**.



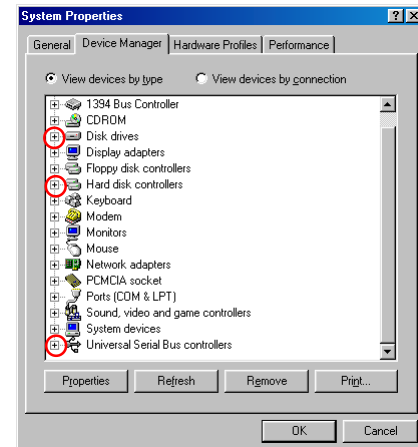
Step 11

Once registration is complete, check that the camera has been correctly registered with the system. Click the My Computer icon on the desktop with the right mouse button and select Properties from the menu that appears. The System Properties dialog will be displayed; click the Device Manager tab.



Step 12

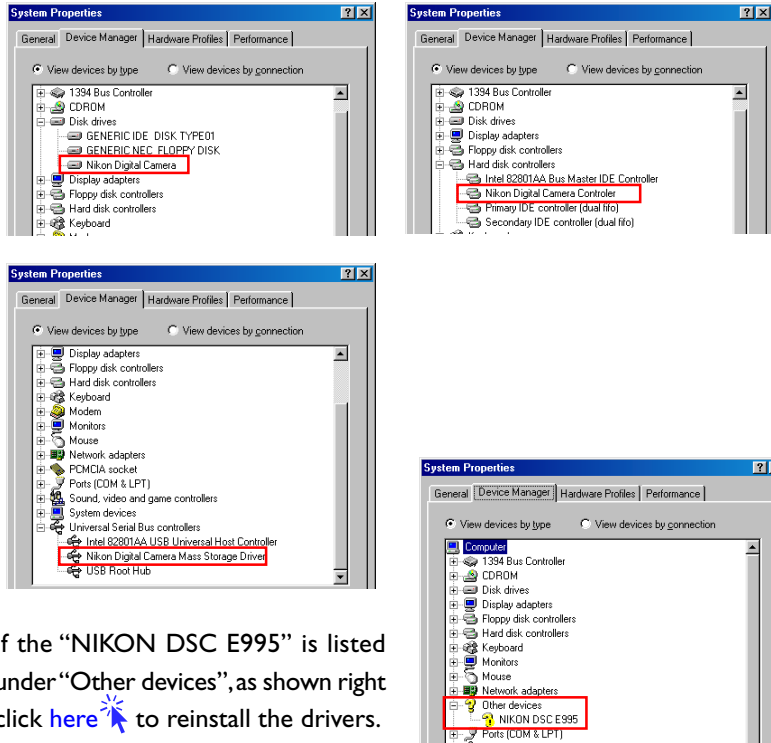
The Device Manager sheet will be displayed. After confirming that “Disk drives,” “Hard disk controllers,” and “Universal Serial Bus controllers” are listed in the Device Manager, click the “+” sign next to each of these device types.



[Click here](#)  to proceed to the next step.

Step 13

After confirming that “Nikon Digital Camera,” “Nikon Digital Camera Controller,” and “Nikon Digital Camera Mass Storage Driver” are listed respectively under “Disk drives,” “Hard disk controllers,” and “Universal Serial Bus controllers,” double click each of these listings to open the associated Properties window.

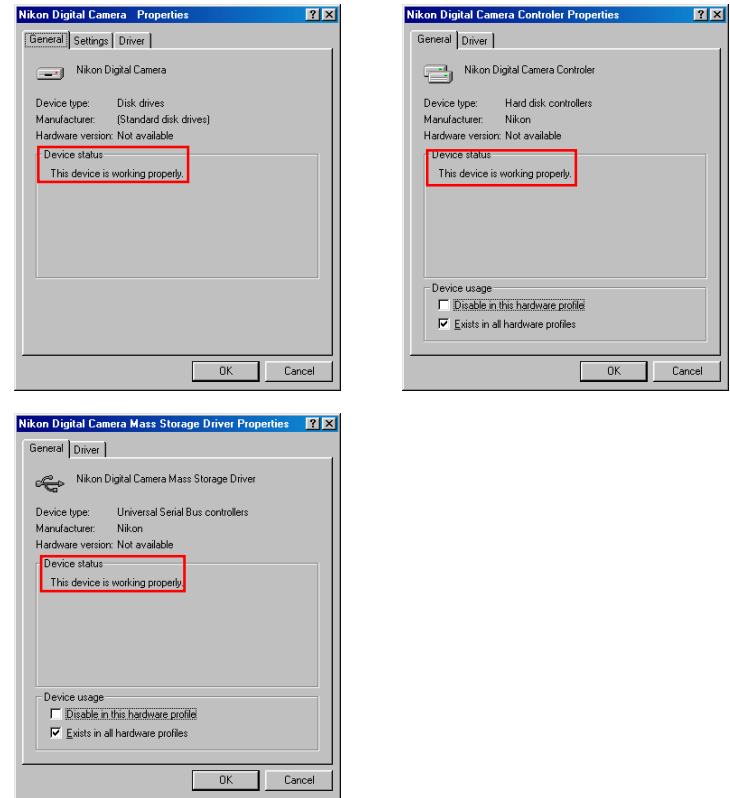


If the “NIKON DSC E995” is listed under “Other devices”, as shown right click [here](#) to reinstall the drivers.

If “Nikon Digital Camera,” “Nikon Digital Camera Controller,” and “Nikon Digital Camera Mass Storage Driver” are not listed respectively under “Disk drives,” “Hard disk controllers,” and “Universal Serial Bus controllers,” and “NIKON DSC E995” is not listed under “Other devices”, re-start your computer and return to [Step 1](#).

Step 14

Click the General tab for each device and confirm that “This device is working properly” appears under “Device status”. Click **OK**.



Click **OK** to close the System Properties window. Device registration is now complete.

Click [here](#) to return to
“Connecting the COOLPIX885/775 to a Computer”.