

Connecting Your DI Series Camera under Windows XP

Running Nikon View 4 under Windows XP (Home Edition/Professional)

Installing Nikon View 4

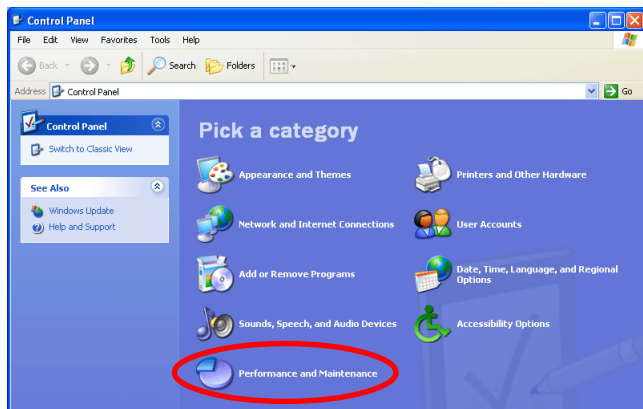
For information on installing Nikon View 4, see the *Nikon View 4 Installation Guide*.

Device Registration

Before you will be able to use your camera with your computer, the camera must be “registered” with the Windows Device Manager.

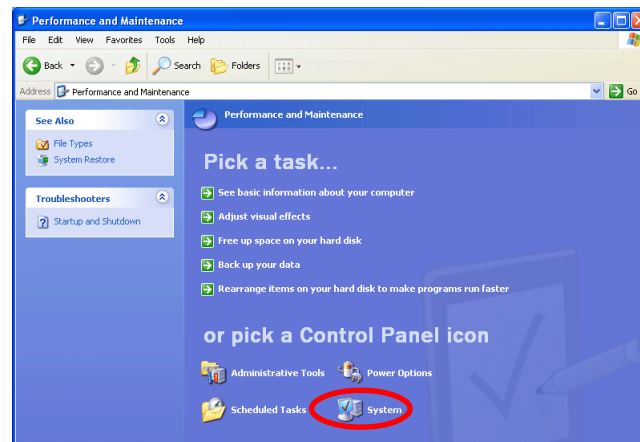
Step 1

Firstly you will need to confirm that your OHCI-compliant IEEE 1394 interface board or card has been correctly registered with the system. Select **Control Panel** from the **Start** menu to display the window shown below. Click **Performance and Maintenance**.



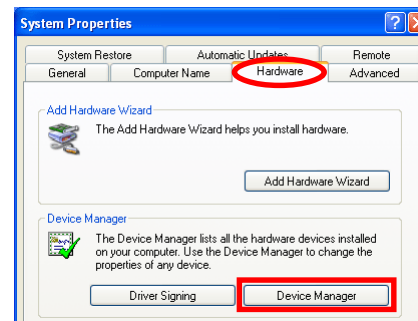
Step 2

Click **System** to open the System Properties window.



Step 3

Select the Hardware tab and click the **Device Manager** button.

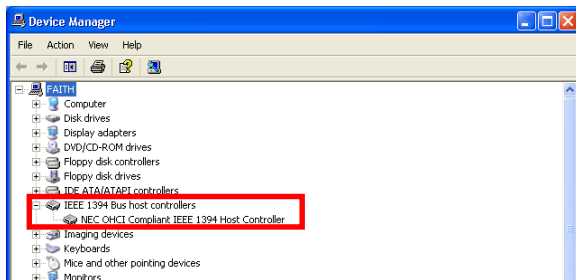


Log On

You will need to log on as the “Computer Administrator” to register your camera.

Step 4

If your OHCI-compliant IEEE 1394 interface board or card has been correctly registered with the system, the bus controller for your IEEE 1394 board or card should be listed under “1394 Bus Host Controller”. If “IEEE 1394 Bus host controllers” is not listed in the Device Manager, or if your IEEE 1394 interface board or card is listed as an unknown or miscellaneous device or is preceded by a red or yellow warning icon, follow the instructions in the manual provided with the board to ensure that the drivers are properly installed.




Step 5

Holding down the shift key to prevent the Welcome dialog from opening automatically, insert the Nikon View 4 CD into the CD-ROM drive. (If the shift key is not held down, the Welcome dialog will appear when the CD-ROM is inserted.) Turn on the D1x (DI/D1H), make sure that the mode dial is set to PC, and then connect the camera to the computer using an IEEE 1394 cable.

Step 6

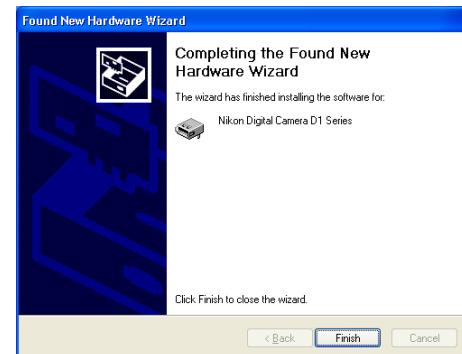
The “Found New Hardware Wizard” dialog will appear. Select “Install the software automatically”, and click **Next**.



If the above dialog does not appear, click [here](#)  to re-install the device drivers.

Step 7

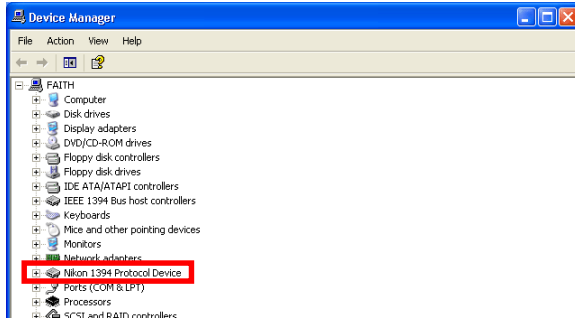
When the driver installation has been completed, the dialog shown below will be displayed; click **Finish** to close the wizard.



Step 8

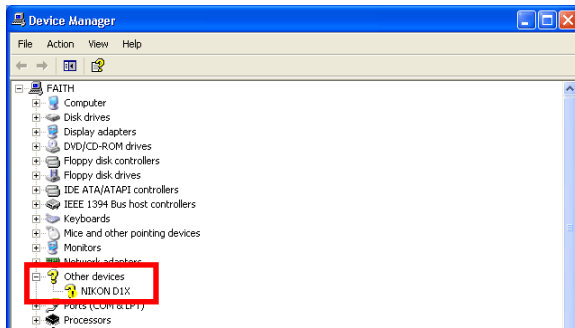
Once registration is complete, check that the D1x (D1/D1H) has been correctly registered with the system.

Open the Device Manager as instructed in Steps 1-3. The Device Manager will be displayed. After confirming that “Nikon 1394 Protocol Device” is listed in the Device Manager, click the “+” sign to its left.



If “Nikon 1394 Protocol Device” does not appear

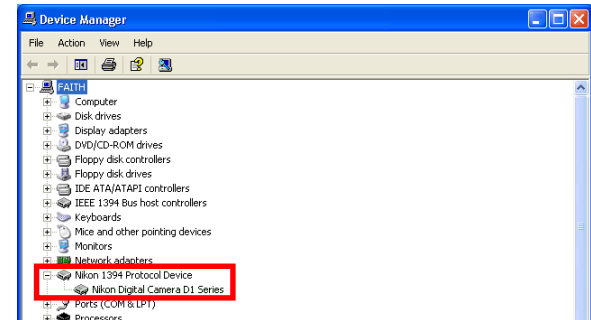
If “NIKON D1x (D1/D1H)” is listed under “Other devices”, click [here](#) and reinstall the device drivers.



If “Nikon 1394 Protocol Device” is not listed in the Device Manager and “NIKON D1x (D1/D1H)” is not listed under Other Devices, re-start your computer and return to [Step 1](#).

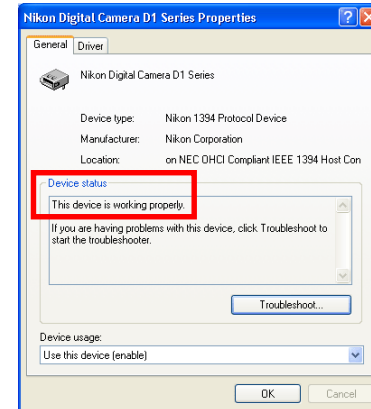
Step 9

After confirming that “Nikon Digital Camera D1 Series” is listed under “Nikon 1394 Protocol Device,” double-click the listing to open the Properties window.



Step 10

The Nikon Digital Camera D1 Series Properties dialog will be displayed. Click the General tab and confirm that “This device is working properly” appears under “Device status”. Click **OK**.



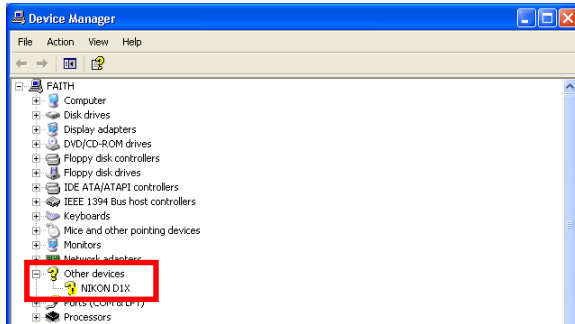
Close the Device Manager, then click **OK** to close the System Properties window. Device registration is now complete.

Reinstalling the device drivers

If NIKON D1X (DI/DIH) appears under “Other Devices” reinstall the device drivers as instructed below.

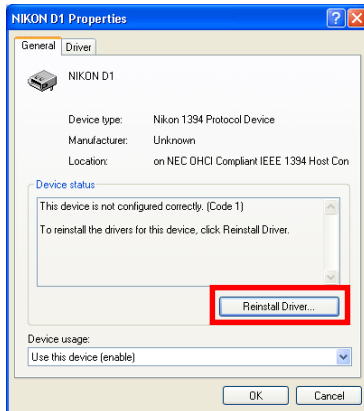
Step 1

Open the Device Manager dialog. Double-click the listing for the NIKON D1X (DI/DIH) that appears under “Other devices”; the Properties dialog will be displayed.



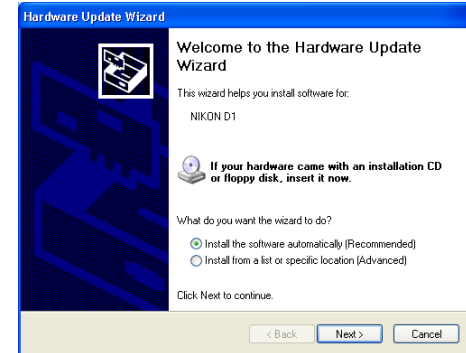
Step 2

Open the General tab and click **Reinstall Driver...**



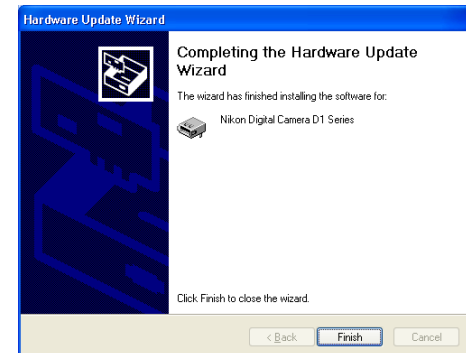
Step 3

The “Hardware Update Wizard” dialog will appear. Holding down the shift key to prevent the Welcome dialog from opening automatically, insert the Nikon View 4 CD into the CD-ROM drive. (If the shift key is not held down, the Welcome dialog will appear when the CD-ROM is inserted.) Select “Install the software automatically”, and click **Next**.



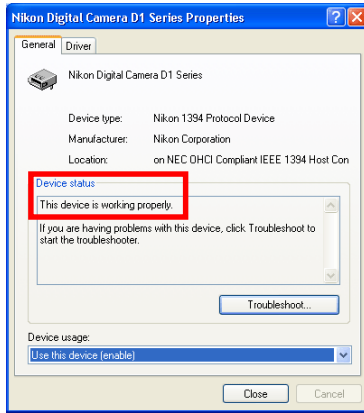
Step 4

When the driver installation has been completed, the dialog shown below will be displayed; click **Finish** to close the wizard.



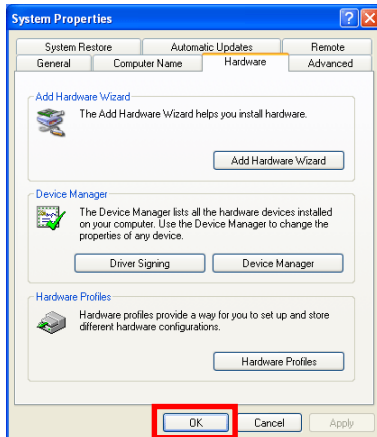
Step 5

Confirm that “This device is working properly” appears under “Device status” in the General Tab of the Nikon Digital Camera D1 Series Properties dialog. Click **Close**.



Step 6

Close the Device Manager, then click **OK** to close the System Properties window.



Starting Nikon View 4

When a D1 series camera is connected via USB to a computer running Windows XP, and the camera is turned on, Nikon View 4 will start automatically. Refer to the *Nikon View 4 Reference Manual* for further details about the use of Nikon View 4.

Click [here](#)  to return to index of manuals.