



Guaranteed-Rate I/O Version 2 for Linux Guide

007-4244-007

COPYRIGHT

© 2004, 2006 – 2010 SGI All rights reserved; provided portions may be copyright in third parties, as indicated elsewhere herein. No permission is granted to copy, distribute, or create derivative works from the contents of this electronic documentation in any manner, in whole or in part, without the prior written permission of SGI.

LIMITED RIGHTS LEGEND

The software described in this document is "commercial computer software" provided with restricted rights (except as to included open/free source) as specified in the FAR 52.227-19 and/or the DFAR 227.7202, or successive sections. Use beyond license provisions is a violation of worldwide intellectual property laws, treaties and conventions. This document is provided with limited rights as defined in 52.227-14.

TRADEMARKS AND ATTRIBUTIONS

Altix, CXFS, SGI, and the SGI logo are trademarks or registered trademarks of Silicon Graphics International Corp. or its subsidiaries in the United States and other countries.

UNIX and the X device are registered trademarks of The Open Group in the United States and other countries. All other trademarks mentioned herein are the property of their respective owners.

New Features in this Guide

This version contains the following changes:

- GRIO2 licenses are stored in file `/etc/lk/keys.dat`, as are CXFS licenses. For more information, see *CXFS 6 Administration Guide for SGI InfiniteStorage*.
- The file that the `ggd2 -d` option logs to is now called `/var/log/ggd2ggd2PID`. See "ggd2.options File" on page 17.
- Removal of information about local mode. GRIOv2 is only supported in cluster mode because it has no real applicability outside of a CXFS filesystem.

Record of Revision

Version	Description
001	February 2004 Original publication
002	March 2006 Revision
003	June 2006 Revision for IRIX 6.5.30
004	August 2007 Revision for CXFS 4.2
005	June 2008 Revision for CXFS 5.1
006	March 2009 Revision for CXFS 5.4 and ISSP 1.6
007	March 2010 Revision for CXFS 6.0 and ISSP 2.0

Contents

About This Guide	xi
Scope	xi
Related Publications	xi
Obtaining Publications	xii
Conventions	xiii
Reader Comments	xiii
1. Introduction	1
What Does GRIO Do?	1
Terminology	2
2. How GRIO Works	5
Traffic Control	5
Stream Use and Real-Time File Setup	6
Software Components	6
ggd2 Daemon	6
Qualified Bandwidth	7
Managing Bandwidth: Encapsulation and Distributed Bandwidth Allocator	7
GRIO Server Relocation and Recovery	10
3. Setting Up GRIO	11
Installation Requirements	11
Deployment Considerations for Cluster Volumes	11
Data Layout	12
Choosing a Qualified Bandwidth	12
007-4244-007	vii

Cluster Volumes	15
Licensing	17
ggd2.options File	17
4. Administering and Monitoring GRIO	21
Administering GRIO with the <code>grioadmin</code> Command	21
<code>grioadmin</code> Command Line	21
<code>grioadmin</code> Examples	22
Monitoring GRIO Streams with the <code>griomon</code> Command	27
5. Monitoring Quality of Service	29
<code>griofs</code> Command Line	30
GRIO Scheduler	34
Monitoring Stream and I/O Metrics	34
Quality of Service	37
Quality-of-Service Metrics	38
<code>griofs</code> Caveats	38
<code>griofs</code> Examples	39
6. GRIO API Overview for Windows	45
<code>grio_avail()</code>	45
<code>grio_bind()</code>	46
<code>grio_get_stream()</code>	46
<code>grio_modify()</code>	47
<code>grio_release()</code>	47
<code>grio_reserve()</code> and <code>grio_reserve_fd()</code>	48
<code>grio_unbind()</code>	50
Appendix A. GRIOv1 and GRIOv2 Differences	51

Glossary	53
Index	57

About This Guide

This publication provides information about GRIO version 2, the second-generation guaranteed-rate I/O product from SGI.

Scope

This guide provides the information you need to administer GRIO version 2. It discusses the following:

- Chapter 1, "Introduction" on page 1
- Chapter 2, "How GRIO Works" on page 5
- Chapter 3, "Setting Up GRIO" on page 11
- Chapter 4, "Administering and Monitoring GRIO" on page 21
- Chapter 5, "Monitoring Quality of Service" on page 29
- Chapter 6, "GRIO API Overview for Windows" on page 45

Related Publications

For information about this release, see the SGI InfiniteStorage Software Platform (ISSP) release notes (`README.txt`).

The following publications contain additional information that may be helpful:

- *CXFS 6 Administration Guide for SGI InfiniteStorage*
- *CXFS 6 Client-Only Guide for SGI InfiniteStorage*
- *XVM Volume Manager Administrator's Guide*
- Man pages:

- `ggd2(1M)`
- `grioadmin(1M)`
- `griogos(1M)`
- `open(2)`

```
grio_avail(3X)
grio_bind(3X)
grio_modify(3X)
grio_release(3X)
grio_reserve(3X)
grio_unbind(3X)
grio2(5)
```

Obtaining Publications

You can obtain SGI documentation as follows:

- See the SGI Technical Publications Library at <http://docs.sgi.com>. Various formats are available. This library contains the most recent and most comprehensive set of online books, man pages, and other information.
- You can view man pages by typing `man title` at a command line.
- The `/docs` directory on the ISSP DVD or in the Supportfolio download directory contains the following:
 - The ISSP release note: `/docs/README.txt`
 - Other release notes: `/docs/README_NAME.txt`
 - The manuals provided with ISSP
 - A complete list of the packages and their location on the media:
`/docs/RPMS.txt`
 - The packages and their respective licenses: `/docs/PACKAGE_LICENSES.txt`
- The ISSP release notes and manuals are installed on the system as part of the `sgi-isspdocs` RPM into the following location:
`/usr/share/doc/packages/sgi-issp-ISSPVERSION-TITLE`

Conventions

Note: When it is necessary to distinguish between the previous version (version 1) and the current version (version 2), this guide uses the terms *GRIOv1* and *GRIOv2*. Where the term *GRIO* is used without qualification, it refers to version 2.

The following conventions are used throughout this document:

Convention	Meaning
<code>command</code>	This fixed-space font denotes literal items such as commands, files, routines, path names, signals, messages, and programming language structures.
<i>variable</i>	Italic typeface denotes variable entries and words or concepts being defined.
user input	This bold, fixed-space font denotes literal items that the user enters in interactive sessions. (Output is shown in nonbold, fixed-space font.)
[]	Brackets enclose optional portions of a command or directive line.
...	Ellipses indicate that a preceding element can be repeated.

Reader Comments

If you have comments about the technical accuracy, content, or organization of this publication, contact SGI. Be sure to include the title and document number of the publication with your comments. (Online, the document number is located in the front matter of the publication. In printed publications, the document number is located at the bottom of each page.)

You can contact SGI in any of the following ways:

- Send e-mail to the following address:
techpubs@sgi.com
- Contact your customer service representative and ask that an incident be filed in the SGI incident tracking system.

- Send mail to the following address:

SGI
Technical Publications
46600 Landing Parkway
Fremont, CA 94538

SGI values your comments and will respond to them promptly.

Introduction

GRIO version 2 (GRIO) is the second-generation guaranteed-rate I/O product from SGI.

This section discusses the following:

- "What Does GRIO Do?" on page 1
- "Terminology" on page 2

What Does GRIO Do?

GRIO does the following:

- Enables a proportion of a filesystem's I/O resources to be reserved for the exclusive use of a process or compute node
- Ensures that the rate at which a process or node issues I/O does not exceed its reservation and throttles I/O if necessary
- Ensures that the aggregate utilization of a filesystem never exceeds a configurable maximum level, referred to as the *qualified bandwidth*

With a carefully selected and verified qualified bandwidth, you can use GRIO to meet the quality-of-service (QoS) requirements of demanding I/O workloads where data must be processed without interruption.

GRIO includes the following features:

- Support for CXFS filesystems shared among nodes in a cluster
- A simple filesystem-level performance qualification model (rather than the often complex device-qualification model used in GRIOv1)
- A range of tools for monitoring and measuring delivered bandwidth and I/O service time

When GRIO begins managing a filesystem, every node with access to that filesystem is notified. From that point on, all user and system I/O that does not have an explicit reservation is encapsulated. This means that I/O that is not explicitly managed by a GRIO reservation is automatically associated with a system-managed kernel stream.

The `ggd2` daemon allocates otherwise unused bandwidth to these streams, which allows I/O that is not explicitly managed by a GRIO reservation to be processed even when there are active reservations in the system. `ggd2` dynamically adjusts the amount of bandwidth allocated for this purpose based on monitoring of filesystem demand and utilization.

You can use the information provided by the QoS infrastructure to choose the tradeoff between resource utilization and delivered I/O performance that is most appropriate for a given application mix, workload, and production environment.

For more information, see the following:

- Chapter 4, "Administering and Monitoring GRIO" on page 21 and the `grioadmin(1M)` man page
- Chapter 5, "Monitoring Quality of Service" on page 29 and the `griooqs(5)` and `griooqs(1M)` man pages
- The `ggd2(1M)` man page

Terminology

GRIO uses the following terminology:

- *Quality of service (QoS)* refers to the performance properties of a system service (such as worst-case bandwidth or I/O service time).
- *Qualified bandwidth* is the maximum bandwidth that can be delivered by a filesystem (and the XVM volume on which it resides) in a given configuration under a realistic application workload such that all applications are delivered an adequate QoS.
- *Reservation* is the set of QoS parameters requested by a user application. Reservation requests are forwarded to the `ggd2(1M)` bandwidth management daemon. GRIO supports two kinds of reservations:
 - Explicit *application-level* reservations, which are made by individual applications using the `libgrio2` APIs. These are available only on Windows nodes.
 - *Node-level* bandwidth allocations, which are used within GRIO to control the I/O flowing from a compute node to a given filesystem that is not part of a GRIO-enabled application stream. These are available on all nodes.

- *Guarantee* is the assurance made by the system to a user process that it will deliver data from a storage device at the reserved rate.
- *Stream* is the object within the kernel that encodes the reservation's QoS parameters and maintains the necessary scheduling and monitoring state required to fulfill the guarantee.

How GRIO Works

This chapter discusses the following:

- "Traffic Control" on page 5
- "Stream Use and Real-Time File Setup" on page 6
- "Software Components" on page 6
- "ggd2 Daemon" on page 6
- "Qualified Bandwidth" on page 7
- "Managing Bandwidth: Encapsulation and Distributed Bandwidth Allocator" on page 7
- "GRIO Server Relocation and Recovery" on page 10

Traffic Control

GRIO is a component on the XFS and CXFS I/O path that runs in every node with access to a GRIO-managed filesystem. When active, all I/O on a machine and in the cluster is controlled by the GRIO scheduler.

I/O falls into the following categories:

- *GRIO I/O*: direct (non-buffered) I/O for applications that have made an explicit GRIO reservation
- *Non-GRIO I/O*: all other buffered and system I/O

GRIO ensures that applications with reserved bandwidth receive data at the requested rate, regardless of other I/O activity on the node and elsewhere within the cluster. GRIO will throttle an application if it attempts to use more bandwidth than it has reserved.

Stream Use and Real-Time File Setup

In order to use an application-level GRIO reservation, a file must be read or written using direct I/O requests. The `open(2)` man page describes the use and buffer alignment restrictions of the direct I/O interface. A GRIO reservation can be made for any regular file within an XFS or CXFS filesystem created on an XVM volume.

Both XFS and CXFS provide a dedicated real-time subvolume that allows filesystem metadata to be separate from user data. To allocate a file on the real-time subvolume of an XFS or CXFS filesystem, you must use the `fcntl(2)` `F_FSSETXATTR` command to set the `XFS_XFLAG_REALTIME` flag. You can only issue this command on a newly created file. It is not possible to mark a file as real-time after non-real-time data blocks have been allocated to it.

Software Components

GRIO functionality is distributed between the following main components:

- `gdd2` daemon (see "gdd2 Daemon" on page 6)
- `libgrio2` library, which implements the GRIO userspace API (see Chapter 6, "GRIO API Overview for Windows" on page 45)
- The operating system kernel, including the following:
 - Stream management
 - I/O scheduler
 - Cluster integration
 - Messaging

gdd2 Daemon

The `gdd2(1M)` daemon is a user-level process started at system boot time that manages the I/O bandwidth for a collection of XVM volumes. It does the following:

- Activates and deactivates the GRIO kernel scheduler
- Processes client requests to reserve and release bandwidth

- Tracks bandwidth utilization
- Manages unallocated bandwidth
- Prevents oversubscription
- Enforces GRIO software licenses
- Broadcasts to the relevant kernels the amount of bandwidth per filesystem that may be used for non-GRIO I/O

Qualified Bandwidth

The qualified bandwidth for a filesystem is the maximum I/O load that it can sustain while still satisfying requirements for delivered bandwidth and I/O service time.

You must determine a specific qualified bandwidth for each GRIO-managed filesystem. The qualified bandwidth is specified by using the `cxfs_admin(1M)` command.

The `ggd2` daemon is responsible for managing the allocation of available bandwidth between different applications and nodes.

You can adjust the qualified bandwidth as needed to make the best use of your system, taking into account the tradeoff between resource utilization and delivered I/O performance. For more information, see "Choosing a Qualified Bandwidth" on page 12.

Managing Bandwidth: Encapsulation and Distributed Bandwidth Allocator

The `ggd2` daemon tracks the total qualified bandwidth and ensures that the total workload never exceeds the qualified bandwidth.

When `ggd2` begins managing a filesystem, every node with access to that filesystem is notified. Each node in turn creates a dedicated system stream for that filesystem, which is called the *non-GRIO stream*. From that point on, all user and system I/O that does not have an explicit GRIO reservation is encapsulated by this stream and then managed by the GRIO scheduler. There is a non-GRIO stream on each node with access to the filesystem; the default bandwidth allocation for non-GRIO streams is 1 Mbyte/sec.

Note: The scheduling for all non-GRIO I/O within a GRIO-managed filesystem received from different applications and system services is on a first-come-first-served basis.

GRIO supports application-level reservations (created by GRIO-enabled applications using the `libgrio2` interfaces) and node-level bandwidth allocations (configured using the GRIO administration interfaces). The `libgrio2` interfaces permit an application to do the following:

- Reserve bandwidth
- Dynamically bind and unbind the resulting GRIO stream to any number of open file descriptors
- Modify its reservation
- Release its bandwidth back to the system

GRIO ensures that the requested guarantee is met for the aggregate I/O performed across the bound file descriptors.

However, applications are often not GRIO-enabled. For these applications, GRIO allows an administrator to configure a node-level bandwidth allocation. GRIO supports two types of node-level allocations:

- *Floor allocations* (-F), for which GRIO ensures that the node receives **at least** the configured bandwidth. While there is any unallocated bandwidth, and the node is issuing I/O at a rate greater than its initial allocation, `gdd2` will attempt to increase its allocation temporarily to help service the additional demand.
- *Ceiling allocations* (-C), for which the node receives **at most** the configured bandwidth. That is, the configured bandwidth acts as a cap on the amount of I/O that the node will be permitted to issue. This is the default.

To keep the total throughput of the filesystem high even when there are active GRIO streams or node-level allocations, `gdd2` attempts to allocate any unreserved portion of the qualified bandwidth for use by non-GRIO applications. This bandwidth is effectively lent for short periods of time until `gdd2` receives a new request for guaranteed-rate bandwidth, at which point it is reclaimed. GRIO applications have priority over non-GRIO applications.

The `gdd2` daemon periodically adjusts the amount of bandwidth allocated to the individual non-GRIO streams for its managed filesystems. This functionality is

referred to as the *distributed bandwidth allocator* (DBA). The DBA is responsible for determining how unreserved bandwidth is distributed between the nodes with access to the filesystem. By default, the DBA runs every two seconds, constantly allocating free bandwidth to nodes based on a range of dynamically monitored demand and utilization metrics. (To change the DBA default, edit the `ggd2.options` file on each of the GRIO server-capable nodes. For more information, see "ggd2.options File" on page 17.)

Note: The rate at which the DBA runs affects the delay that an application or node that does not have a GRIO reservation might experience when it starts doing I/O. The longer the interval, the longer a node may have to wait (with its I/O paused) before `ggd2` will increase its allocation.

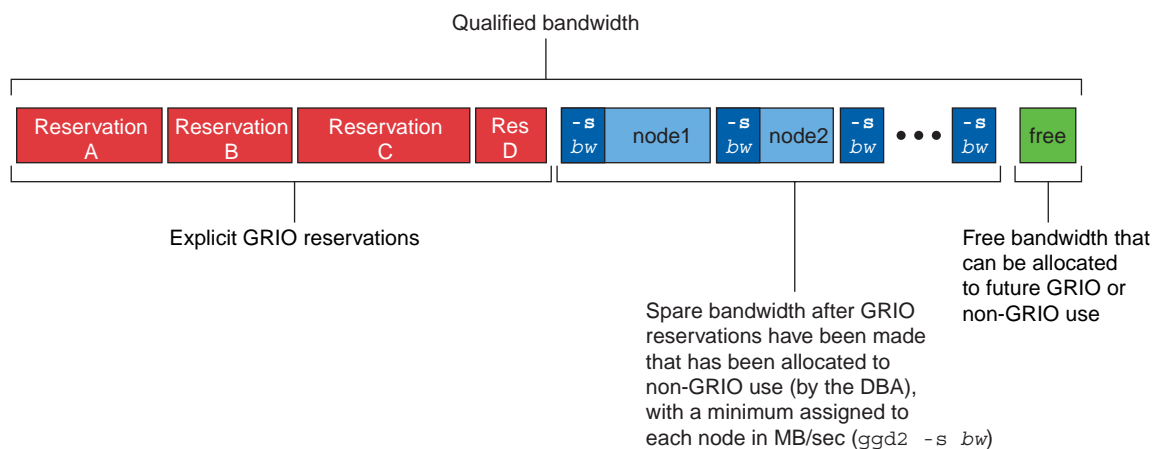


Figure 2-1 Qualified Bandwidth

A user process can request a reservation using the `grio_reserve()` and `grio_reserve_fd()` library calls. Requests are forwarded to the `ggd2` that is actively managing the target volume domain. Requests to filesystems in the cluster domain are forwarded to `ggd2` on the GRIO server, which may be running on a different node in the cluster.

For more information, see the `grio_reserve(3X)` man page.

GRIO Server Relocation and Recovery

Each instance of `ggd2` maintains reservation and bandwidth state that must be kept consistent with one or more kernels.

If `ggd2` fails, a new `ggd2` instance will receive from the local kernel all of the information necessary to reestablish the following:

- Cluster volume reservations (if the `ggd2` that failed was the GRIO server for the cluster)
- All of the DBA state for non-GRIO I/O

If a GRIO server node fails, a new GRIO server is automatically elected and all of the cluster volume reservations and DBA state is reestablished by that instance of `ggd2`.

You can also choose to manually migrate the GRIO server to another CXFS server-capable administration node in the cluster. For more information, see Chapter 4, "Administering and Monitoring GRIO" on page 21 and the `grioadmin(1M)` man page.

To determine the active GRIO server, use the `grioadmin -sv` command.

Setting Up GRIO

This chapter discusses the following:

- "Installation Requirements" on page 11
- "Deployment Considerations for Cluster Volumes" on page 11
- "Data Layout" on page 12
- "Choosing a Qualified Bandwidth" on page 12
- "Cluster Volumes" on page 15
- "Licensing" on page 17
- "ggd2.options File" on page 17

Installation Requirements

Every CXFS platform supports GRIO. All platforms are enabled by default except for Linux client-only nodes; on a Linux client-only node, you must enable GRIO and reboot the node in order for GRIO to take effect. For more information, see the *CXFS 6 Administration Guide for SGI InfiniteStorage* and the *CXFS 6 Client-Only Guide for SGI InfiniteStorage*.

Install the following RPM on all nodes in the cluster:

```
grio2-cmds-VERSION.ARCHITECTURE.rpm
```

Install the following additional RPM on server-capable administration nodes:

```
grio2-server-VERSION.ARCHITECTURE.rpm
```

Deployment Considerations for Cluster Volumes

You must observe the following constraints when setting up GRIO filesystems in a cluster:

- If any of the logical units (LUNs) on a particular device will be managed as GRIO filesystems, then all of the LUNs should be managed as GRIO filesystems.

Typically, there will be hardware contention between separate LUNs, both in the storage area network (SAN) and within the storage device. If only a subset of the LUNs are managed, I/O to the unmanaged LUNs could still cause oversubscription of the device and could in turn violate guarantees on the managed filesystems.

- A storage device containing GRIO-managed filesystems should not be shared between clusters. The GRIO daemons running within different clusters are not coordinated, and unmanaged I/O from one cluster can cause guarantees in the other cluster to be violated.

Data Layout

To set up a filesystem on a RAID device such that you achieve correct filesystem device alignment and maximize I/O performance, remember to do the following:

- Ensure that each data partition is correctly aligned with the internal disk layout of its LUN
- Set XVM stripe parameters correctly
- Pass correct volume geometry (stripe unit and width) to `mkfs_xfs(1)`

For more information, see the `grio2(5)` man page.

Choosing a Qualified Bandwidth

You can adjust the qualified bandwidth to reflect the specific trade-off between delivered QoS and utilization of the storage infrastructure for your situation.

The following affect the qualified bandwidth you will choose:

- The hardware configuration
- The application work flow and I/O load
- The specific QoS requirements of applications and users

Typically, the first concern is that the required bandwidth can be delivered by the storage system. The second concern is the service time observed for individual I/Os.

Determining qualified bandwidth is an iterative process. There are several strategies you can use to determine and fine-tune the qualified bandwidth for a filesystem. For example:

- Establish a given bandwidth and then adjust so that the QoS requirements are met. Do the following:
 1. Make an initial estimate of the qualified bandwidth. You can use the fixed storage architecture parameters (RAID performance, number of HBAs, and so on) to estimate the anticipated peak bandwidth that can be delivered. The qualified bandwidth is then determined as an appropriate fraction of this peak.
 2. Configure `gpd2` appropriately using the `cxfs_admin(1M)` command.
After configuring using `cxfs_admin`, you must restart the `grio2` service:

```
# service grio2 restart
```
 3. Run a test workload.
 4. Monitor the delivered performance.
 5. Refine the estimate as needed.
- Establish that QoS requirements are satisfied and then adjust to maximize throughput. To do this, increase the load until the storage system can no longer meet the application QoS requirements; the qualified bandwidth must be lower than this value.
- Explore the space of possible workloads and test whether a given workload satisfies both bandwidth and application QoS requirements.

Although the hardware configuration provides a basis for calculating an estimate, remember that the qualified bandwidth is also affected by the particular work-flow issues and the QoS requirements of individual applications. For example, an application that has large tunable buffers (such as a flipbook application that does aggressive RAM caching) can tolerate a greater variation in I/O service time than can a media broadcast system that must cue and play a sequence of very short clips. In the first example, the qualified bandwidth would be configured as a larger proportion of the sustained maximum. In the second example, the qualified bandwidth might be reduced to minimize the system utilization levels and improve I/O service times.

A high qualified bandwidth will generally achieve the greatest overall throughput but with the consequence that individual applications may intermittently experience longer service times for some I/Os. This variation in individual service times is

referred to as *jitter*; as the storage system approaches saturation, service-time jitter will typically increase. A lower qualified bandwidth means that total throughput will be reduced, but because the I/O infrastructure is under less stress, individual requests will typically be processed with less variation in individual I/O service times. Figure 3-1 illustrates these basic ideas. The precise relationship between load on the storage system and variation in I/O service time is highly dependent on your storage hardware.

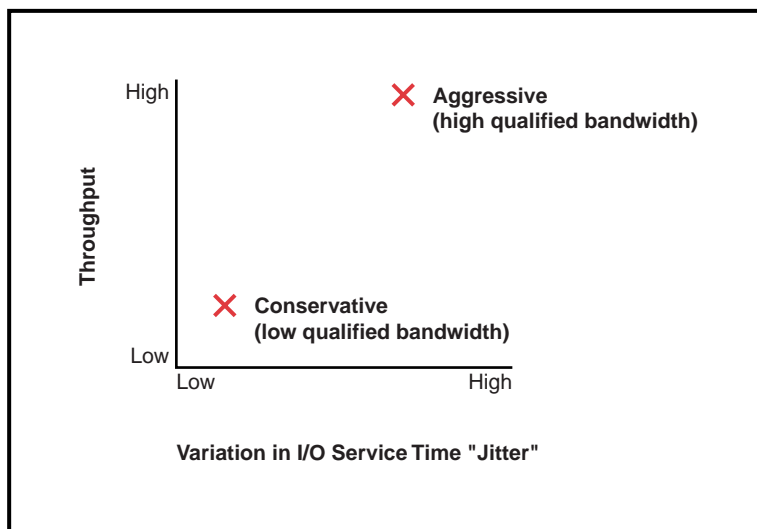


Figure 3-1 Tradeoff Between Throughput and Variation in I/O Service Time (Jitter)

Some storage devices (particularly those with real-time schedulers) can provide a fixed bound on I/O service time even at utilization levels close to their maximum. In this case, the qualified bandwidth can be set higher even where applications have tight QoS requirements. The user-adjustable qualified bandwidth provides the flexibility required for GRIO to work with both dedicated real-time devices as well as more common off-the-shelf storage systems.

Note: In all cases, you must verify the chosen qualified bandwidth by testing the storage system under a realistic workload.

You can use the `griogps(1M)` tool to measure the delivered QoS performance. This tool extracts QoS performance for an active stream without disturbing the application or the kernel scheduler. GRIO maintains very detailed performance metrics for each active stream. Using the `griogps` command while running a workload test lets you answer questions such the following for every active stream in the system:

- What has been the worst observed bandwidth over a 1-second period?
- What is the worst observed average I/O service time for a sequence of 10 I/Os?

For more information about GRIO tools and the mechanisms for accessing QoS data within the kernel, see Chapter 5, "Monitoring Quality of Service" on page 29, and the `griogps(1M)` man page.

Cluster Volumes

A *cluster volume* is used with CXFS filesystems and is shared among nodes in a cluster. This volume is in the *cluster volume domain*.

All cluster volumes are managed by a single instance of the `ggd2` daemon running on one of the CXFS administration nodes in the cluster; this node is referred to as the *GRIO server*. There is one GRIO server per cluster.

The GRIO server is elected automatically. You can relocate it by using the `grioadmin(1M)` command. The GRIO server must be a CXFS administration node. Client-only nodes will never be elected as GRIO servers. For more information, see Chapter 4, "Administering and Monitoring GRIO" on page 21, and the `grioadmin(1M)` man page.

You must use the `cxfs_admin(1M)` command to configure cluster volumes for GRIO. A prompting mode is also available for `cxfs_admin(1M)`. For more information, see the *CXFS 6 Administration Guide for SGI InfiniteStorage*.

If you have installed the `grio2-server-*` RPM and turned on GRIO, the `ggd2` daemon will automatically query the cluster configuration database for GRIO volume configuration information. `ggd2` dynamically tracks updates to the cluster database.

In `cxfs_admin`, there are two GRIO attributes associated with filesystems:

- `grio_managed`, which specifies whether a filesystem is managed by GRIOv2 (true) or not (false). The default is false. Setting `grio_managed` to false disables GRIO management for the specified filesystem, but it does not reset the `grio_qual_bandwidth` value. In this case, `grio_qual_bandwidth` is left unmodified in the cluster database and ignored.

Note: A filesystem that has been configured as managed by GRIO will be allowed to mount even if GRIO software is not installed or GRIO is not configured properly. See "Deployment Considerations for Cluster Volumes" on page 11.

- `grio_qual_bandwidth`, which specifies a filesystem's qualified bandwidth in bytes (B suffix), kilobytes (KB), megabytes (MB), or gigabytes (GB), where the units are multiples of 1024. The default is MB for 4000 or less, B for 4001 or greater. If the filesystem is GRIO-managed, you must specify a qualified bandwidth with this attribute. To modify the qualified bandwidth, a filesystem must be unmounted.

Note: These are advanced-mode attributes. When configuring GRIO with `cxfs_admin`, you should use `set mode=advanced`.

For example, any one of the following commands sets a filesystem's qualified bandwidth to 1.2 GB/s:

```
cxfs_admin:cluster> modify filesystem grio_qual_bandwidth=1288500000
cxfs_admin:cluster> modify filesystem grio_qual_bandwidth=1258300KB
cxfs_admin:cluster> modify filesystem grio_qual_bandwidth=1288.8MB
cxfs_admin:cluster> modify filesystem grio_qual_bandwidth=1288.8
```

For more information about CXFS, see *CXFS 6 Administration Guide for SGI InfiniteStorage* and *CXFS 6 Client-Only Guide for SGI InfiniteStorage*.

Licensing

The `ggd2` daemon checks the license at startup, whenever it detects a configuration change, or when it receives a `SIGHUP` signal. The `ggd2` daemon validates the configuration at startup and whenever the configuration is changed.

If the configuration of a volume domain is altered and becomes unlicensed, `ggd2` enters a passive mode in which all further requests pertaining to that domain, with the exception of release requests, are denied. A message is sent to the system log and that volume domain will remain deactivated until the configuration returns to a licensed state, at which time another message will be logged indicating the domain is again active.

GRI02 licenses are stored in file `/etc/lk/keys.dat`, as are CXFS licenses. For more information, see *CXFS 6 Administration Guide for SGI InfiniteStorage*.

`ggd2.options` File

The `/etc/cluster/config/ggd2.options` file contains the command line options for `ggd2` when launched at startup.

You can uncomment and edit lines as required. The arguments are as follows:

`-d level` Sets the maximum debug level and logs the specified level of messages to both the system log and to an additional log file called `/var/log/ggd2ggd2PID` (such as `/var/log/ggd226455` for the `ggd2` PID of 26455).

level is an integer in the range 0 through 4 (the higher the *level* number, the more debug information that is output). The levels are as follows:

- 0 logs critical system resource errors
- 1 logs the above plus `ggd2`-specific error and warning messages
- 2 logs the above plus important events or state changes
- 3 logs the above plus infrequent, less-important events
- 4 logs the above plus debug-level messages

By default, `ggd2` logs just level 0 critical system resource errors to the system log only.

`-f` Runs `ggd2` in the foreground. By default, `ggd2` is started as a daemon.

`-m bw` Specifies the minimum amount of *bw* bandwidth in KB/s (default) that `ggd2` will allocate for non-guaranteed user and system I/O **per GRIO-managed volume**. All nodes issuing non-GRIO I/O will receive a fair share of this minimum bandwidth. A node will be allocated the bigger value specified by `-m` or `-s`. The default is 1 MB/s.

For example, `-m2048` causes `ggd2` to allocate a minimum of 2048 KB/s to each GRIO-managed volume. This bandwidth becomes permanently allocated to non-GRIO I/O and cannot be reserved for GRIO I/O. Use the suffix `K` or `M` to explicitly specify bandwidth in KB/s or MB/s. For example, `-m3M` causes `ggd2` to allocate a minimum of 3 MB/s to each GRIO-managed volume.

`-r percent` Reserves a percentage of each volume's available qualified bandwidth for GRIO I/O. Reservation requests are then serviced directly from this pool of cached free bandwidth without blocking. *percent* is the percentage of each volume's qualified bandwidth that `ggd2` attempts to keep unallocated, expressed as an integer in the range 0 through 100. You should choose this value based on the following:

- Expected I/O utilization levels
- Importance of minimizing the stream creation latency
- Expected rate at which reservation requests will be made

By default, `ggd2` allows unreserved bandwidth to be allocated for servicing non-GRIO I/O. This maximizes the total throughput of the system. However, as `ggd2` only makes adjustments to these allocations periodically, a new reservation may block until `ggd2` can reclaim the requested bandwidth.

Note: Using the `-r` option causes a proportion of the unreserved I/O capacity to remain unused and reduces the total throughput and efficiency of the system for non-GRIO I/O. You should only use this option if minimizing reservation latency is a priority.

For example, given a volume with a qualified bandwidth of 200 MB/s, `-r 20` will instruct `ggd2` to try to keep up to 20% (40 MB/s) of any remaining unreserved bandwidth cached and available for servicing reservation requests directly. `ggd2` adjusts this cache of free bandwidth

every time the distributed bandwidth allocator (DBA) runs, which defaults to once every 2 seconds (see `-u`). With these settings, `ggd2` will be able to grant an additional 40 MB/s every 2 seconds without blocking any reservation requests.

`-s bw` Specifies the minimum amount of *bw* bandwidth in KB/s (default) that `ggd2` will allocate for non-GRIO user and system I/O **per node**. A node will be allocated the bigger value specified by `-s` or `-m`. The default is 1 MB/s.

For example, `-s2048` causes `ggd2` to allocate a minimum of 2048 KB/s to each node accessing a GRIO-managed volume. This bandwidth becomes permanently allocated to non-GRIO I/O and cannot be reserved for GRIO I/O. Use the suffix `K` or `M` to explicitly specify bandwidth in KB/s or MB/s. For example, `-s3M` causes `ggd2` to allocate a minimum of 3 MB/s to each node accessing a GRIO-managed volume.

`-u ms` Specifies the distributed bandwidth allocator (DBA) update interval in milliseconds (ms), where *ms* is a value in the range 250 through 100000. The default is 2000 (2 seconds). For more information about DBA, see "Managing Bandwidth: Encapsulation and Distributed Bandwidth Allocator" on page 7.

Note: The rate at which the DBA runs affects the delay that an application or node that does not have a GRIO reservation might experience when it starts doing I/O. The longer the interval, the longer a node may have to wait (with its I/O paused) before `ggd2` will increase its allocation.

For example, highlighting the modified lines in bold:

```
# command line options for ggd2 when launched from /etc/init.d/grio2
# uncomment/edit lines as required
#

# Minimum non-GRIO bandwidth per node. Units are Mbytes/sec
-s 1M

# debug level, in the range 0 to 4
# -d 1

# minimum reserve bandwidth to accommodate short-latency reservation
# demands, expressed as a percentage of the total qualified bandwidth
-r 30

# Distributed Bandwidth Allocator (DBA) update interval
# value in milliseconds
-u 2000
```

For changes to this file to take effect, do one of the following on the GRIO server, which will cause ggd2 to reread its options file:

- Stop and restart the grio2 service:

```
# service grio2 restart
```

- Run the following:

```
# run killall -HUP ggd2
```

To determine the active GRIO server, use the `grioadmin -sv` command.

Note: In the event of a GRIO server relocation or recovery, you must perform the above steps on each GRIO server-capable node in the cluster.

Administering and Monitoring GRIO

This chapter discusses the following:

- "Administering GRIO with the `grioadmin` Command" on page 21
- "Monitoring GRIO Streams with the `griomon` Command" on page 27

Administering GRIO with the `grioadmin` Command

You can use the `grioadmin` tool to perform node-level administration tasks for shared CXFS filesystems, such as the following:

- List active GRIO reservations on the current node
- Create, modify, and release node-level bandwidth allocations
- Query available bandwidth

This section discusses the following:

- "grioadmin Command Line" on page 21
- "grioadmin Examples" on page 22

`grioadmin` Command Line

```
grioadmin [options] [fs|streamID]
```

The arguments are as follows:

- a Prints the bandwidth available for reservation for the specified filesystem and the total bandwidth currently reserved for use by the local node, either allocated to the node or reserved by applications. This total includes bandwidth temporarily allocated to the node by the distributed bandwidth allocator (DBA) running within `ggd2`.
- C Indicates that the node-level allocation requested with the `-g` or `-m` option should be **at most** *bw* MB/s (a ceiling). This is the default behavior for `-g`.

- F Indicates that the node-level allocation requested with the -g or -m option should be **at least** *bw* MB/s (a floor).
- g *bw* Allocates *bw* MB/s for access by the local node to the specified filesystem, if bandwidth is available. This node-level allocation is shared by all applications running on the node that are not GRIO aware. The allocation type can be either a ceiling (-C) or a floor (-F). The default allocation type is a ceiling.
- h Print a usage message.
- l Lists active streams in an easily parsed form (one per line).
- L *cell* Relocates the GRIO server to the node with the cell ID *cell*. To determine the cell ID, use any of the standard CXFS reporting utilities, such as `cxfs_admin`, `cxfs_info`, or `clconf_info`.
- m *bw* Modifies the current node-level allocation on the specified filesystem to a bandwidth of *bw* MB/s. You can modify the type of an active allocation by also specifying either -C or -F.
- r Releases the current node-level allocation on the specified filesystem.
- s Prints a more human-readable summary of active streams than -l. The results are grouped per filesystem.
- v Displays verbose output (used with -s).
- streamID* Specifies the ID of an active GRIO stream.
- fs* Specifies a path that identifies a mounted GRIO-managed filesystem (in which case the non-GRIO stream for the filesystem is used).

If you specify `grioadmin` without any arguments, it prints a usage message by default.

grioadmin Examples

The following example commands create, inspect, modify, and remove a node-level allocation of the GRIO-managed filesystem `/stripe` with a qualified bandwidth of 350 MB/s.

Note: `grioadmin` classifies active streams as one of the followings:

- `App`, which is a GRIO stream that is created explicitly by an application using the interfaces in the GRIO library. Only I/O to file descriptors that have been bound to such a stream using `grio_bind(3X)` will receive the requested QoS guarantee.
 - `Dynamic`, which is the component of the node-level allocation that is controlled by the DBA running within `ggd2`. It is updated periodically based on the amount of free bandwidth in the filesystem and the I/O demand from different nodes.
 - `Static`, which is the component of the node-level allocation that has been configured by an administrator using `grioadmin` with the `-g` option. The `Static` component is not affected by the operation of the DBA or other `App` reservations, and persists until you remove it manually by using the `-r` option. You can configure a node-level allocation as either a floor or a ceiling. The `grioadmin -s` option output indicates the type of active node-level allocations by printing a `FLOOR` or `CEIL` designator with the `Static` component of the currently allocated bandwidth.
-

1. Query the available bandwidth on the `/stripe` filesystem and show the active streams:

```
# /usr/sbin/grioadmin -a /stripe
349.94 MB/s available on /stripe
1.00 MB/s allocated to this node
# /usr/sbin/grioadmin -s
/stripe:
  Dynamic          1.00 MB/s
```

The output from these commands shows the following:

- The minimum dynamic allocation that `ggd2` is configured to make to an idle node is 1.00 MB/s
 - There are just under 350 MB/s available to be reserved
2. Create a 200-MB/s node-level allocation for this node in the `/stripe` filesystem:

```
# /usr/sbin/grioadmin -g200 /stripe
Static allocation configured for /stripe.
Stream ID is d919c6e5-8405-1029-8d74-08006913a7f7
```

A stream will be created for the allocation and is attached to the non-GRIO stream in the kernel.

3. Verify that the available bandwidth was reduced accordingly:

```
# /usr/sbin/grioadmin -a /stripe
149.94 MB/s available on /stripe
200.06 MB/s allocated to this node
```

4. Inspect the kernel streams:

```
# /usr/sbin/grioadmin -s
/stripe:
  Dynamic          1.00 MB/s
  Static           200.00 MB/s  CEIL
```

This shows that the `/stripe` filesystem has its initial minimal Dynamic allocation and a new node-level (Static) allocation.

To be more verbose and print the stream IDs, add the `-v` option:

```
# /usr/sbin/grioadmin -sv
/stripe:
  Dynamic          1.00 MB/s  b77c9351-7b63-1029-8f56-08006913a7f7
  Static           200.00 MB/s  d919c6e5-8405-1029-8d74-08006913a7f7  CEIL
```

5. Increase the node-level allocation to 300 MB/s without disturbing in-progress I/O on the node:

```
# /usr/sbin/grioadmin -m300 /stripe
Static bandwidth allocation for filesystem /stripe has
been modified:
# /usr/sbin/grioadmin -s
/stripe:
  Dynamic          1.00 MB/s
  Static           300.00 MB/s  CEIL
```

6. Start a GRIO-aware application that requests a 50-MB/s reservation and print the stream IDs:

```
# /usr/sbin/grioadmin -s /stripe
/stripe:
  Dynamic          1.00 MB/s
  Static           200.00 MB/s  CEIL
  App (31932)      50.00 MB/s
```

This output shows that the new App stream has a process ID of 31932.

7. Terminate the application and remove the node-level allocation:

```
# /usr/sbin/grioadmin -r /stripe
Static bandwidth allocation for filesystem /stripe has
been released.
# /usr/sbin/grioadmin -s
/stripe:
    Dynamic          1.00 MB/s
```

The following examples show using `grioadmin` on a Windows client to create a floor reservation (-F), modify it to a ceiling allocation (-C), and then release it:

```
C:\>grioadmin -sv
GRIO cluster server is cxfsaltix1 (cell 0)
x:\mnt\tp9500_1: cluster:
    Dynamic          1.00 MB/s  6016cd36-8900-2a10-b682-9c12fb0816e8

C:\>grioadmin -F -g 10 x:\mnt\tp9500_1
Static allocation configured for x:\mnt\tp9500_1.
Stream ID is a267e371-caca-324f-3b89-f8c41eaca4b0.

C:\>grioadmin -sv
GRIO cluster server is cxfsaltix1 (cell 0)
x:\mnt\tp9500_1: cluster:
    Dynamic          1.00 MB/s  6016cd36-8900-2a10-b682-9c12fb0816e8
    Static           10.00 MB/s  a267e371-caca-324f-3b89-f8c41eaca4b0 FLOOR

C:\>grioadmin -C -m 10 x:\mnt\tp9500_1
Static bandwidth allocation for filesystem x:\mnt\tp9500_1 has been modified.

C:\>grioadmin -sv
GRIO cluster server is cxfsaltix1 (cell 0)
x:\mnt\tp9500_1: cluster:
    Dynamic          1.00 MB/s  6016cd36-8900-2a10-b682-9c12fb0816e8
    Static           10.00 MB/s  a267e371-caca-324f-3b89-f8c41eaca4b0 CEIL

C:\>grioadmin -r x:\mnt\tp9500_1
Static bandwidth allocation for filesystem x:\mnt\tp9500_1 has been released.

C:\>grioadmin -sv
```

4: Administering and Monitoring GRIO

```
GRIO cluster server is cxfsaltix1 (cell 0)
x:\mnt\tp9500_1: cluster:
  Dynamic          1.00 MB/s  6016cd36-8900-2a10-b682-9c12fb0816e8
```

Figure 4-1 shows an example of the **CXFS Info GRIOv2** tab in the on a Windows node.

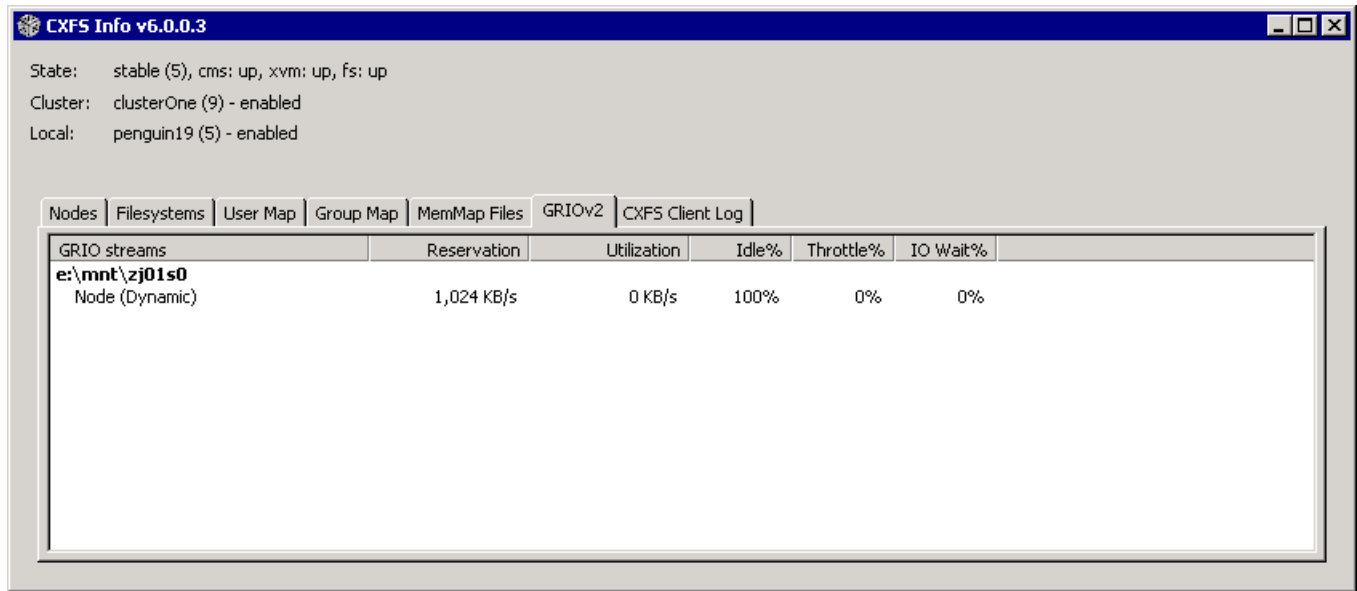


Figure 4-1 CXFS Info on Windows

The following shows an example of creating a static reservation and modifying it:

```
# /usr/sbin/grioadmin -sv
GRIO cluster server is cxfsaltix1 (cell 0)
x:\mnt\concat2and8: shared:
  Dynamic          1.00 MB/s  534d0eee-ad73-2c10-4e09-d513ea1d17e3

x:\mnt\l0: shared:
  Dynamic          1.00 MB/s  d066916d-3758-2c10-6201-c1a6db6d693c
  Static           20.00 MB/s  39dcee18-9f9f-b64a-328c-b3c8a3a895df FLOOR

# /usr/sbin/grioadmin -m 30 -F x:\mnt\l0
```



```

Static bandwidth allocation for filesystem x:\mnt\l0 has been modified.

# /usr/sbin/grioadmin -g 30 -F x:\mnt\concat2and8
Static allocation configured for x:\mnt\concat2and8.
Stream ID is 68a1e264-a698-7746-1f95-e7ae4693e568.

# /usr/sbin/grioadmin -m 60 -F x:\mnt\concat2and8
Static bandwidth allocation for filesystem x:\mnt\concat2and8 has been modified.

# /usr/sbin/grioadmin -sv
GRIO cluster server is cxfsaltix1 (cell 0)
x:\mnt\concat2and8: shared:
  Dynamic      1.00 MB/s  534d0eee-ad73-2c10-4e09-d513ea1d17e3
  Static       60.00 MB/s  68a1e264-a698-7746-1f95-e7ae4693e568 FLOOR

x:\mnt\l0: shared:
  Dynamic      1.00 MB/s  d066916d-3758-2c10-6201-c1a6db6d693c
  Static       30.00 MB/s  39dcee18-9f9f-b64a-328c-b3c8a3a895df FLOOR

```

Monitoring GRIO Streams with the griomon Command

You can use the `griomon` command to display information about GRIO. To display information about streams only, use the `-s` option. By default, `griomon` polls and updates every second; with the `-s` option, `griomon` displays updates when a change occurs in the bandwidth allocation on the filesystems.

For example, on a Linux node:

```

linux# /usr/sbin/griomon

Active GRIO streams (gen=0):

9c1e0676-9ad6-2c10-7009-c11f3f3766a3 /mnt/lun1
  STATIC NONGRIO fs_id: 9c1e0676-9ad6-2c10-7009-c11f3f3766a3
  gr_bytes: 22020096 gr_msecs: 1000ms
  gr_bucket: 44040192 gr_bucket_max: 44040192
  gr_total: 30246800896 gr_backlog: 0 gr_issued: 0 gr_idle: 498568744239us

9b2f7943-0c88-6847-e3aa-6844e75dae28 /mnt/lun1
  STATIC USER (hidden) pid: -1 fs_id: 9c1e0676-9ad6-2c10-7009-c11f3f3766a3

```

4: Administering and Monitoring GRIO

```
gr_bytes: 20971520 gr_msecs: 1000ms
gr_bucket: 41943040 gr_bucket_max: 41943040
gr_total: 0 gr_backlog: 0 gr_issued: 0 gr_idle: 256442555825us
```

```
linux# /usr/sbin/griomon -s
```

```
Active GRIO streams (gen=0):
```

```
9c1e0676-9ad6-2c10-7009-c11f3f3766a3 /mnt/lun1
    STATIC NONGRIO fs_id: 9c1e0676-9ad6-2c10-7009-c11f3f3766a3

9b2f7943-0c88-6847-e3aa-6844e75dae28 /mnt/lun1
    STATIC USER (hidden) pid: -1 fs_id: 9c1e0676-9ad6-2c10-7009-c11f3f3766a3
```

Monitoring Quality of Service

You can use the `griogos(1M)` command to extract and report the QoS metrics that GRIO maintains for each active stream. `griogos` loops, repeatedly fetching new QoS statistics from the kernel for the specified application stream or node-level allocation. `griogos` displays a header containing the following information:

- Operating system and release
- Date and time
- Filesystem reported on
- Current reservation and stream ID

This section discusses the following:

- "griogos Command Line" on page 30
- "GRIO Scheduler" on page 34
- "Monitoring Stream and I/O Metrics" on page 34
- "Quality of Service" on page 37
- "Quality-of-Service Metrics" on page 38
- "griogos Caveats" on page 38
- "griogos Examples" on page 39

griogos Command Line

`griogos [options] [streamID|fs] [delay [count]]`

- `-c` Clears the screen before printing each new set of statistics.
- `-h` Prints a usage message.
- `-i` Reports the following low-level QoS metrics for all currently configured sampling intervals:
 - `minbw`
 - `maxbw`
 - `lastbw`
 - `minio`
 - `maxio`
 - `lastio`

For details about these metrics, see "Quality-of-Service Metrics" on page 38.
- `-I intervals` Reports the same low-level QoS metrics as `-i`, but for a specified range of sampling intervals.

intervals is a comma-separated list of sampling intervals expressed as either a number of I/Os or a time interval in msec. For example, the following would report results averaged over the last 5 and 10 I/Os, and over the last 1 and 2 seconds, respectively:

```
-I 5,10,1000ms,2000ms
```
- `-l` Lists active streams in an easily parsed form (one per line with the following fields):
 - Filesystem mount point (or the string `<unmounted>` if the filesystem is not mounted)
 - Type of the stream
 - Stream ID
 - Reserved bandwidth reported in bytes and msec
 - Process ID for application-created streams

- m** Enables monitoring mode, which reports the following high-level stream and I/O metrics:
- bytes
 - msecs
 - bckt
 - bckt (max)
 - total
 - rate
 - bklg
 - issd
 - idle
 - thrt
 - wait
- See "Monitoring Stream and I/O Metrics" on page 34 for more information.
- n** Prints a more human-readable version of the performance information reported with the **-i** option for all currently configured sampling intervals:
- lastbw
 - minbw
 - maxio
- For more information, see "Quality-of-Service Metrics" on page 38
- The minimum bandwidth and maximum average service time are the metrics of most concern when attempting to deliver guaranteed data rates.
- N *intervals*** Reports the same metrics as **-n**, but for a specified range of sampling intervals.
- intervals* is a comma-separated list of sampling intervals expressed as either a number of I/Os or a time interval in msecs. For example, the following would report results averaged over the last 5 and 10 I/Os, and over the last 1 and 2 seconds, respectively:
- ```
-N 5,10,1000ms,2000ms
```
- o *file*** Logs output to the specified *file*.

-r

Resets the specified statistics when used with one of the following options:

- High-level stream statistics: -m
- Low-level QoS statistics: -i, -I, -n, -N, -t, or -T

The -r option is ignored if none of these other options is specified.

GRIO will continue to update some kernel statistics even when no I/O is being performed (such as when the rate metric reported in the -m mode is updated even on an idle stream). In order to get results that accurately correspond with those seen by a user application, you should start `griogqs` with the -r option at the same time that the application test begins.

-R *intervals*

Reconfigures the kernel QoS monitoring intervals and resets the statistics. This allows you to change the set of sampling intervals used in the kernel to compute recent bandwidth and average service time.

*intervals* is a comma-separated list of sampling intervals expressed as either a number of I/Os or a time interval in msec. For example, the following would report results averaged over the last 5 and 10 I/Os, and over the last 1 and 2 seconds, respectively:

```
-R 5,10,1000ms,2000ms
```

By default, GRIO is configured to compute statistics for a wide range of sampling intervals. However, it can be useful to change these intervals using the -R option when a monitored application has a buffering behavior that is not well-matched by the default intervals.

---

**Note:** GRIO always configures two additional intervals automatically:

- The single sample interval, which tracks the best and worst case service times for individual I/Os
  - The maximum interval, which is as large as the kernel data structures can accommodate
-

- s** Prints a more human-readable summary of active streams than `-l`. Results are grouped per filesystem and include the following:
- Stream type
  - Process ID (for application streams)
  - Bandwidth reservation in MB/s
  - Stream IDs (when `-v` is also specified)
- For more information about the output format, see the `grioqos(1M)` man page.
- t** Displays a per-stream I/O service time histogram for all buckets.
- T *buckets*** Displays a per-stream I/O service time histogram for the specified *buckets*. You can display a ranges of values. For example, the following would cause the values of 11 histogram buckets to be displayed:
- ```
-T 0,1,2,3,20-25,52
```
- v** Display verbose output (used with `-s`).
- streamID*** Specifies the ID of an active GRIO stream.
- fs*** Specifies a path that identifies a mounted GRIO-managed filesystem.
- delay*** Specifies the length of time in seconds that `grioqos` should sleep before retrieving each new set of statistics.
- count*** Specifies the total number of samples to be retrieved.

If you specify `grioqos` without any arguments, it prints a usage message by default.

To terminate `grioqos`, press `Ctrl-C` on Windows or send a `SIGINT` on other platforms.

GRIO Scheduler

Interpreting the statistics collected by `griogps` requires a basic understanding of the GRIO scheduler.

GRIO uses the token bucket abstraction to limit the average rate and burstiness of I/O flowing to or from the filesystem. Conceptually, each stream has a bucket of tokens. Each token confers the right to issue one unit of I/O. Tokens are added to the token bucket at a rate corresponding to the GRIO reservation and accumulate up to the maximum size of the bucket, at which point any further tokens are discarded. When a new I/O request arrives, it is issued if there are sufficient tokens available to the token bucket; if there are insufficient tokens, it is added to the throttle queue for the stream, where it is held for a short period before the token bucket is checked again. The rate at which tokens accrue to the token bucket controls the average rate of the stream. The maximum size of the token bucket controls the size of the largest burst of I/O that can be issued.

The ability to issue a temporary burst of I/O above the reserved data rate is important. It is the mechanism within GRIO by which an application or device that temporarily falls below the required data rate can catch up, thus preserving the required average data rate.

GRIO implements a variation of the weighted round-robin scheduling discipline. At each scheduler activation, it visits each stream in the system and issues as much I/O as it can, up to the limit of the token bucket. The order in which the streams are visited is always the same. To increase the determinism of the resulting I/O flow, GRIO will (on platforms where it is possible) attempt to disable further I/O reordering operations in lower-level devices.

Monitoring Stream and I/O Metrics

In monitoring mode (enabled with `-m`), `griogps` reports the following metrics:

`bytes, msecs`

Reports the current GRIO reservation. If the monitored stream is a non-GRIO stream, this includes both the static and dynamic components (and may change as the DBA periodically adjusts the dynamic allocation or if an administrator modifies the static allocation using `grioadmin`). An application reservation may change if the application uses the `grio_modify(3X)` call to modify its reservation at runtime.

`bckt, bckt (max)`

Describes the current state of the token bucket:

- `bckt` measures the current contents of the token bucket in MB. The contents of `bckt` change continuously as I/O is issued.
- `bckt = (max)` is the size of the token bucket in MB and the maximum burst of I/O that GRIO will issue to the filesystem. The value of `bckt (max)` is related to the size of the current reservation and only changes when the reservation is changed.

`total, rate`

Describes the amount of data transferred:

- `total` is the total amount of data in MB transferred across the stream since it was created or the statistics were reset
- `rate` is the overall data rate in MB/s that was achieved

When a stream is first initialized, the token bucket is full, which means that `bckt` is equal to `bckt (max)`. An unthrottled application can issue a large initial burst of I/O before it drains its token bucket and the GRIO throttle forcibly slows it down. Depending on the size of individual I/Os, the action of the throttle can cause the instantaneous bandwidth to oscillate slightly above and below the guaranteed rate. In these cases, however, the overall data rate including the initial burst is greater than the requested data rate and can be verified with the rate metric (for example, by using `griogs -rm`).

`bklg, issd`

Tracks I/Os being actively processed by the stream:

- `bklg` is the backlog of I/O that has been placed on the throttle queue
- `issd` is active I/O that has been issued to the volume but has not yet completed

`idle, thrt, wait`

Accounts for the utilization of the stream. These are instantaneous metrics that are computed for the period since the last sample:

- `idle` is the percentage of the time during which the stream was not processing I/O, that is, there was no active I/O and no I/O on the throttle queue (`bklg` and `issd` are both equal to 0)
- `thrt` is the percentage of the time during which the stream had I/O on the throttle queue (`bklg` is non-zero)
- `wait` is the percentage of the time during which there was active I/O (`issd` is non-zero)

The stream utilization metrics (`idle`, `thrt`, and `wait`) can be useful when trying to understand the interaction between an application, the GRIO scheduler, and the storage device. Table 5-1 describes commonly observed behaviors and their corresponding metrics.

Table 5-1 Relationship of Stream Utilization Metrics to Application State

<code>idle</code>	<code>thrt</code>	<code>wait</code>	Application State
Low	Low	Low	Expected behavior for a self-throttled application: <ul style="list-style-type: none"> • The application is issuing I/O to the filesystem efficiently, so the stream is rarely idle • The application is not issuing I/O at a rate faster than its reservation, as there is little I/O on the throttle queue of the stream • I/O is being serviced quickly suggesting that the filesystem is not currently oversubscribed
Low	High	Low	Expected behavior for an application being throttled by GRIO.

idle	thrt	wait	Application State
Any	Any	High	The application is spending a lot of time waiting for I/O. This may or may not be a problem, but if the application is seeing poor QoS as reported by the <code>-i</code> , <code>-I</code> , <code>-n</code> , <code>-N</code> , <code>-t</code> , or <code>-T</code> options, you should review the qualified bandwidth for this filesystem. An indication of poor QoS would be low worst-case bandwidth and high average service times over relatively long sampling intervals.
High	Any	Any	The stream is spending a lot of time idle. The application may not be issuing I/O to the filesystem efficiently. You should investigate whether it is using multithreaded or asynchronous I/O. If the desired data rate in userspace is not being achieved, the behavior of the application should be reviewed.

Quality of Service

Depending on the amount of I/O buffering an application performs, it may be more or less sensitive to variation in I/O service time, also known as *jitter*. This can vary from tens of seconds for applications that have large buffers and use threaded or asynchronous I/O, to tens of milliseconds for single-threaded applications with little buffering that require a low upper bound on I/O service time.

Approaches to measuring I/O performance often tend to focus at the ends of this spectrum, measuring one of the following (which can be limiting as a result):

- Average bandwidth and ignoring the effects of service interruptions over shorter time intervals
- Worst-case service time that (for applications that are able to tolerate more jitter) can be a stronger criteria that is useful

The GRIO QoS infrastructure provides a configurable mechanism for monitoring performance over the entire range of time scales from the service times of individual I/Os to the sustained bandwidth over long sampling intervals. It can do so for an individual application or over a period of time without instrumenting or otherwise disrupting the performance of the application.

Quality-of-Service Metrics

Within the kernel, GRIO records the I/O completion times for all recent I/Os to or from a stream. From this high-resolution data, it computes a number of derived metrics that can be efficiently exported to userspace. You can change the monitoring intervals over which these metrics are computed by using `griogqs`. Sampling intervals can be expressed as either a time t (such as `1000ms`) or as a number of individual samples n . For instance, `griogqs` can display average I/O service time and bandwidth for the last four I/Os, the last 200ms, the last second, and so forth.

GRIO computes the following metrics for each configured sampling interval:

<code>lastbw</code>	Describes the recent average bandwidth, which is the bandwidth observed over the last t ms or n samples. It is an instantaneous metric describing recent stream activity.
<code>minbw, maxbw</code>	Describes the minimum and maximum values of <code>lastbw</code> . These metrics track the worst- and best-case bandwidth delivered over any continuous interval of the specified length since the creation of the stream or the last time the statistics were reset.
<code>lastio</code>	Describes the average I/O service time for I/Os over t ms or n samples. When n is 1, this metric records the actual service times of individual I/Os. When n is greater than 1, this metric is the average of the observed service times. It is an instantaneous metric describing recent stream activity.
<code>minio, maxio</code>	Describes the minimum and maximum values of <code>lastio</code> . Like <code>minbw</code> and <code>maxbw</code> , these metrics track the worst- and best-case average service times delivered over any continuous interval of the specified length since the statistics were initialized or last reset.

`griogqs` Caveats

There is a size restriction on the kernel structures used to hold recent I/O statistics. If a requested metric cannot be computed because there is insufficient data, a single hyphen (-) is printed. This can also happen when the QoS metrics have been recently reset using the `-r` or `-R` options. For example, requesting a sampling interval of

`10000ms` may display only a hyphen (-) because the GRIO kernel structures cannot hold enough individual samples to compute an average over ten seconds. However, for most I/O rates and sampling intervals, the kernel structures should be adequate.

Use care when interpreting the low-level QoS statistics. A number of the bandwidth and service time measures only make sense if they have been recorded during a period of continuous, consistent application I/O (for example, for a video playback).

The `lastbw` and `maxbw` metrics are meaningful regardless of the behavior of the application. However, `minbw` tracks all interruptions to the flow of I/O. This includes interruptions due to the normal operation of the application as opposed to an actual service interruption in the filesystem or device. Thus, if the application stops and starts I/O during the sampling period, this will be recorded in the `minbw`, which will in turn be of little use in detecting a real service interruption and is unlikely to provide any useful insight into the performance of the application and system.

Similarly, the `lastio` metric is most useful if the application uses a consistent request size when issuing I/O to the filesystem. If the application issues I/O of widely varying size, then the service time is permuted both by filesystem and device issues and the behavior of the application. For such applications, this makes it very difficult to determine the origin of a performance issue. This is particularly true for non-GRIO streams., which manage all of the I/O on a node that does not otherwise have an explicit GRIO reservation. This includes the following:

- Direct I/O from applications that do not have a GRIO reservation
- Buffered I/O from all sources via the buffer cache (or whatever the native filesystem caching mechanism is for the platform)
- All other system I/O to the managed filesystem

The result is that the non-GRIO stream may see a large variation in I/O sizes and the average service time of those I/Os is unlikely to provide useful insight into the performance of the system.

griogqs Examples

This section shows `griogqs` used to monitor a GRIO-aware application. High-level stream and low-level quality-of-service metrics are collected. The application is temporarily suspended to show the effect on the stream utilization and average data rate. The example filesystem `/mirror` has a qualified bandwidth of 30 MB/s.

1. Confirm the available bandwidth on /mirror:

```
$ grioadmin -a /mirror
29.94 MB/s available on /mirror
0.06 MB/s allocated to this node
```

There are just under 30 MB/s available, and a minimal dynamic allocation. Now we start the test application, which makes a 20-MB/s reservation and starts performing reads as fast as it can. The I/O size is just under 8 MBs. The application is multithreaded and configured to have up to four I/Os active.

2. List the active streams and get the stream ID of the application's GRIO stream:

```
$ grioqos -sv
/mirror:
Dynamic          0.06 MB/s  b77c9351-7b63-1029-8f56-08006913a7f7
App (6754151)   20.00 MB/s  03041498-871c-1029-87e2-08006913a7f7
```

3. Monitor the application stream:

```
$ grioqos -m 03041498-871c-1029-87e2-08006913a7f7 1
```

```
Linux cxfsaltix1 2.6.16.46-0.12-default #1 SMP Thu May 17 14:00:09 UTC 2007
ia64 05/20/08
```

```
Filesystem: /mirror
```

```
App (6754151) 20.00 MB/s 03041498-871c-1029-87e2-08006913a7f7
```

-	bytes	msecs	bckt	(max)	total	rate	bklg	issd	idle	thrt	wait
-	bytes	ms	MB	MB	MB	MB/s	MB	MB	%	%	%
21:00:38	20971520	1000	26.97	40.00	0.00	0.00	0.00	15.82	-	-	-
21:00:39	20971520	1000	7.63	40.00	31.64	25.5	0.00	23.73	0	5	100
21:00:40	20971520	1000	4.12	40.00	63.28	28.1	15.82	15.82	0	88	100
21:00:41	20971520	1000	0.61	40.00	94.92	29.1	23.73	7.91	0	100	85
21:00:42	20971520	1000	5.01	40.00	110.74	25.9	23.73	7.91	0	100	72
21:00:43	20971520	1000	1.49	40.00	134.47	25.5	23.73	7.91	0	100	55
21:00:44	20971520	1000	5.89	40.00	158.20	25.2	31.64	0.00	0	100	71
21:00:45	20971520	1000	2.41	40.00	174.02	23.8	23.73	7.91	0	100	60
21:00:46	20971520	1000	6.80	40.00	197.75	23.8	31.64	0.00	0	100	65
21:00:47	20971520	1000	3.29	40.00	213.57	22.9	23.73	7.91	0	100	66
21:00:48	20971520	1000	7.69	40.00	237.30	23.0	31.64	0.00	0	100	61
21:00:49	20971520	1000	4.18	40.00	253.12	22.3	23.73	7.91	0	100	70

```
21:00:50 20971520 1000 0.67 40.00 276.86 22.4 23.73 7.91 0 100 55
21:00:51 20971520 1000 5.13 40.00 292.68 21.9 23.73 7.91 0 100 70
...
```

The first few samples show that the token bucket `bckt` is initially full, which allows the overall data rate `rate` to jump above the reserved 20 MB/s briefly (see "Monitoring Stream and I/O Metrics" on page 34).

The stream utilization metrics `idle`, `thrt`, and `wait` show that while the application is draining its token bucket, the application spends all of its time waiting for I/O to the device. Very quickly, the token bucket empties completely and GRIO begins to throttle the application. `thrt` jumps to 100%. `wait` drops to around 60-70%, which is consistent with the qualified bandwidth.

The maximum this filesystem can deliver is 30MB/s, therefore a reservation of 20MB/s should keep the filesystem active approximately two-thirds of the time, which is what we see. The application is clearly very efficient about issuing I/O to the filesystem (multithreaded with four active I/Os), because there is never any point when the stream is idle and the filesystem does not have I/O to process.

4. To simulate an interruption, temporarily suspend the application in userspace (sending it a `SIGSTOP`). The `griogps -m` output would change as follows:

```
21:01:04 20971520 1000 7.42 40.00 561.62 21.2 15.82 0.00 0 100 61
21:01:05 20971520 1000 11.82 40.00 577.44 21.0 0.00 0.00 31 44 49
21:01:06 20971520 1000 32.04 40.00 577.44 20.2 0.00 0.00 100 0 0
21:01:07 20971520 1000 40.00 40.00 577.44 19.5 0.00 0.00 100 0 0
21:01:08 20971520 1000 40.00 40.00 577.44 18.9 0.00 0.00 100 0 0
...
```

The application stops issuing I/O completely and immediately the utilization metrics change:

- The token bucket fills
- Any remaining I/O on the throttle queue drains out (`thrt` goes to 0)
- The stream becomes completely idle

Note: The `rate` metric, which computes the overall data rate, is updated even while the stream is idle and gradually decreases during this period of inactivity.

5. Restart the application. The `griogos -m` output changes accordingly:

```
21:01:12 20971520 1000 16.10 40.00 593.26 17.1 0.00 23.73 23 0 77
21:01:13 20971520 1000 4.80 40.00 632.81 17.8 15.82 15.82 0 70 99
21:01:14 20971520 1000 1.53 40.00 664.45 18.1 23.73 7.91 0 100 100
21:01:15 20971520 1000 5.93 40.00 688.18 18.3 31.64 0.00 0 100 66
21:01:16 20971520 1000 2.42 40.00 704.00 18.2 23.73 7.91 0 100 60
21:01:17 20971520 1000 6.82 40.00 727.73 18.3 31.64 0.00 0 100 64
21:01:18 20971520 1000 3.31 40.00 743.55 18.3 23.73 7.91 0 100 63
21:01:19 20971520 1000 7.71 40.00 767.29 18.4 31.64 0.00 0 100 63
```

There is a small initial burst as the token bucket is drained and GRIO throttles the application to 20 MB/s.

6. During the same run, we collect low-level QoS statistics. At the start of the run, use `-i` to display all of the intervals that are being monitored in the kernel:

```
$ griogos -i 03041498-871c-1029-87e2-08006913a7f 1
```

```
Linux cxfsaltix1 2.6.16.46-0.12-default #1 SMP Thu May 17 14:00:09 UTC 2007
ia64 05/20/08
```

```
Filesystem: /mirror
```

```
App (6754151) 20.00 MB/s 03041498-871c-1029-87e2-08006913a7f7
```

-	interval	minbw	maxbw	lastbw	minio	maxio	lastio
-	-	MB/s	MB/s	MB/s	ms	ms	ms
21:00:38	lio	-	-	-	296.8	1004.3	1004.3
+	2io	29.32	32.89	32.89	402.2	967.8	967.8
+	3io	30.68	31.94	31.00	505.0	882.0	882.0
+	4io	31.01	31.38	31.38	611.6	788.4	788.4
+	5io	31.46	31.46	31.46	690.1	690.1	690.1
+	6io	-	-	-	-	-	-
+	10io	-	-	-	-	-	-
+	100ms	29.32	32.89	32.89	402.2	967.8	967.8
+	200ms	29.32	32.89	32.89	402.2	967.8	967.8
+	500ms	30.68	31.00	31.00	716.5	882.0	882.0
+	1000ms	31.46	31.46	31.46	690.1	690.1	690.1
+	2000ms	-	-	-	-	-	-
+	5000ms	-	-	-	-	-	-
+	1500io	-	-	-	-	-	-

There are 14 intervals being monitored for this stream. This sample was collected just after the application was started and only a small number of I/Os had been issued. There is insufficient data to compute some of these metrics and a number of samples are displayed as “-”.

7. Select two intervals (500ms and 2000ms) and monitor them during the course of the run:

```
# /usr/sbin/griogps -I "500ms,2000ms" 03041498-871c-1029-87e2-08006913a7f 2
```

```
Linux cxfstaltix1 2.6.16.46-0.12-default #1 SMP Thu May 17 14:00:09 UTC 2007
ia64 05/20/08
```

```
Filesystem: /mirror
```

```
App (6754151) 20.00 MB/s 03041498-871c-1029-87e2-08006913a7f7
```

	interval	minbw	maxbw	lastbw	minio	maxio	lastio
		MB/s	MB/s	MB/s	ms	ms	ms
21:00:38	500ms	-	-	-	-	-	-
+	2000ms	-	-	-	-	-	-
21:00:40	500ms	30.37	31.93	31.48	479.0	1009.0	959.2
+	2000ms	31.46	31.46	31.46	789.4	789.4	789.4
21:00:42	500ms	18.91	32.31	20.14	479.0	1224.1	1224.1
+	2000ms	25.37	31.72	25.37	789.4	1057.5	1057.5
21:00:44	500ms	18.91	32.31	20.75	479.0	1588.4	1583.9
+	2000ms	19.74	31.72	20.38	789.4	1527.7	1527.7
...							

As seen in the high-level metrics, there is an initial burst of I/O before the application is throttled by GRIO. The current bandwidth `lastbw` quickly stabilizes at around 20 MB/s. After the application is suspended in userspace, the low-level QoS statistics clearly record the interruption:

21:01:13	500ms	1.15	32.31	27.27	479.0	1609.3	554.7
+	2000ms	1.15	31.72	3.19	789.4	1594.4	816.3
21:01:15	500ms	1.15	34.95	31.96	479.0	1609.3	988.3
+	2000ms	1.15	33.08	33.08	788.7	1594.4	861.1
...							

GRIo API Overview for Windows

On Windows nodes, User processes communicate with the `gpd2` daemon using the following core library calls:

- "`grio_avail()`" on page 45
- "`grio_bind()`" on page 46
- "`grio_get_stream()`" on page 46
- "`grio_modify()`" on page 47
- "`grio_release()`" on page 47
- "`grio_reserve()` and `grio_reserve_fd()`" on page 48
- "`grio_unbind()`" on page 50

The process that initially reserves bandwidth by calling `grio_reserve()` or `grio_reserve_fd()` is referred to as the *owning process*. Any streams not already released when their owning process exits will be automatically released. Processes can share streams. The ownership of a GRIo stream is nontransferable.

`grio_avail()`

Synopsis:

```
#include <grio2.h>

int grio_avail(
    const char *fs,
    grio_off_t *bytes, grio_msecs_t *msecs)

cc ... -lgrio2
```

The `grio_avail()` call returns the currently available guaranteed-rate bandwidth for a specified filesystem. The returned bandwidth is the qualified bandwidth of the filesystem minus bandwidth reserved for active GRIo streams and any bandwidth statically allocated for non-GRIo I/O. While `gpd2` temporarily allows unreserved

bandwidth to be used for servicing nonguaranteed-rate I/O, this bandwidth is reclaimed when a GRIO reservation is received and is therefore considered available.

For more information, see the `grio_avail(3X)` man page.

`grio_bind()`

Synopsis:

```
#include <grio2.h>

int grio_bind(grio_descriptor_t fd, grio_stream_id_t *stream_id);

cc ... -lgrio2
```

The `grio_bind()` call binds one or more open file descriptors to a GRIO stream. Once bound, all I/O to or from the file descriptors will receive the QoS guarantees of the stream.

Binding a file descriptor increments the reference count of a stream by 1. The file descriptor remains bound to the stream until it is either closed or explicitly unbound with `grio_unbind()`.

The file descriptor must be capable of GRIO I/O. That is, it must refer to an open file on an XFS or CXFS filesystem and be configured for direct I/O.

For more information, see the `grio_bind(3X)` man page.

`grio_get_stream()`

Synopsis:

```
#include <grio2.h>

int grio_get_stream(
    grio_descriptor_t fd,
    grio_stream_id_t *stream_id);

cc ... -lgrio2
```

The `grio_get_stream()` call returns the ID of the stream to which it is bound.

For more information, see the `grio_get_stream(3X)` man page.

`grio_modify()`

Synopsis:

```
#include <grio2.h>

int grio_modify(
    grio_stream_id_t *stream_id,
    grio_off_t *bytes, grio_msecs_t *msecs,
    int flags)

cc ... -lgrio2
```

The `grio_modify()` call changes the properties of an existing GRIO stream. You can increase or decrease reserved bandwidth by using this call.

Note: `grio_modify()` is a synchronous call and, when increasing a reservation, may block while bandwidth is reallocated. This delay can be in the order of 1 or 2 seconds and applications should be designed to accommodate this delay if necessary. While a call to `grio_modify()` is being processed, I/O to the stream continues uninterrupted at its existing rate.

For more information, see the `grio_modify(3X)` man page.

`grio_release()`

Synopsis:

```
#include <grio2.h>

int grio_release(grio_stream_id_t *stream_id)

cc ... -lgrio2
```

The `grio_release()` call removes a GRIO stream ID from the system and releases the primary reference taken when it was created. When all remaining references to

the stream are removed, the stream will be destroyed and its associated bandwidth will be returned to the system.

The `grio_release()` call hides the stream. Attempts to bind new file descriptors using `grio_bind()` will fail with a return value of `ENOENT`. However, the QoS guarantees of the stream will remain in effect until all remaining bound file descriptors are either unbound or closed, and any in-flight I/O to the stream completes.

This behavior gives an application some flexibility in controlling the extent of a GRIO guarantee. For instance, by binding a file descriptor to a stream and immediately releasing the stream, an application can create a temporary reservation that persists for as long as the file descriptor remains open. Alternatively, if a process does not explicitly release a stream, the guarantee persists until that process exits.

For more information, see the `grio_release(3X)` man page.

`grio_reserve()` and `grio_reserve_fd()`

Synopsis:

```
#include <grio2.h>

int grio_reserve(
    const char *path,
    grio_off_t *bytes, grio_msecs_t *msecs,
    int flags,
    grio_stream_id_t *stream_id)

int grio_reserve_fd(
    grio_descriptor_t fd,
    grio_off_t *bytes, grio_msecs_t *msecs,
    int flags,
    grio_stream_id_t *stream_id)

cc ... -lgrio2
```

The `grio_reserve()` and `grio_reserve_fd()` calls reserve guaranteed rate bandwidth to or from a GRIO-managed filesystem. If successful, they set up a GRIO stream in the kernel with the requested properties and return its stream ID:

- `grio_reserve()` makes a filesystem-level reservation. The target filesystem is identified with a path that must be either the filesystem mount point or the device special file on which it is located. Before guaranteed rate I/O can be performed, an open file descriptor must be bound to the new stream using `grio_bind()`.
- `grio_reserve_fd()` makes a file-level reservation. It takes an open file descriptor on the target filesystem. In addition to reserving bandwidth, the file descriptor is bound to the newly created stream. The file must therefore be suitable for guaranteed rate I/O and satisfy the normal requirements of `grio_bind`.

The requested bandwidth is specified as the number of bytes delivered every *msecs* milliseconds. *msecs* is referred to as the *reservation interval*. This value provides additional information to the GRIO scheduler about an application's ability to tolerate variation in I/O service time. (For example, an application request of 1 MB every tenth of a second suggests a tighter requirement than 10 MB delivered every second, even though both requests describe the same average data rate.) GRIO uses this information as a hint only, and honors the expressed bandwidth over an implementation-defined scheduling interval.

`grio_release()` should be called when the stream is no longer required.

The process that creates a stream with these calls is said to be the *owning process*. Any streams not already released when their owning process exits will be automatically released. The ownership of a GRIO stream is not transferable.

GRIO streams are reference-counted. When created, a new stream has a reference count of 1. This primary reference remains until the reservation is released using `grio_release()` or the owning process exits.

A stream persists until its reference count drops to 0. Binding a file descriptor using `grio_bind()` adds a reference. Unbinding using `grio_unbind()` or closing a file descriptor removes a reference. In-flight I/O will also add references to a stream for short periods of time.

It is possible, and frequently useful, for a stream to persist after it has been released. For more information, see the `grio_release()` man page.

Note: Both `grio_reserve()` and `grio_reserve_fd()` are synchronous calls and may block while bandwidth is reallocated. This delay is referred to as the *stream creation latency*.

In the worst case, this delay can be in the order of 1 or 2 seconds, although it may be significantly less depending on the configuration of a particular GRIO deployment.

The following are strategies to minimize the impact of this behavior:

- Reserve bandwidth well ahead of time
 - Perform reservations in a dedicated thread
 - Reuse a reservation wherever possible
 - Configure `gpd2` to keep a proportion of the available free bandwidth uncommitted using the `-r` option
-

For more information, see the `grio_reserve(3X)` and `gpd2(1M)` man pages.

`grio_unbind()`

Synopsis:

```
#include <grio2.h>

int grio_unbind(grio_descriptor_t fd);

cc ... -lgrio2
```

The `grio_unbind()` call unbinds a file descriptor from its GRIO stream. Unbinding a file descriptor decrements the reference count of its stream by 1.

Once unbound, I/O to or from the file descriptor may continue, but will be scheduled as regular, non-guaranteed rate I/O.

For more information, see the `grio_unbind(3X)` man page.

GRIOV1 and GRIOV2 Differences

Table A-1 summarizes the primary differences between GRIOV1 and GRIOV2.

Table A-1 Differences Between GRIOv1 and GRIOv2

	GRIOv1	GRIOv2
Reservation-granting daemon:	ggd	ggd2
Userspace library:	libgrio	libgrio2
Logical volumes:	XLV	XVM
Filesystems supported:	Local XFS filesystems only	Shared CXFS filesystems only
Multiple-node support:	No	Yes
Qualification model:	<i>Device-level</i> : the maximum sustainable bandwidth for each hardware component in the I/O path is qualified individually. (This includes the storage devices, SCSI and Fibre Channel busses, system interconnects, and so on.)	<i>Filesystem-level</i> : the maximum sustainable bandwidth is measured across the entire filesystem under a realistic application workload. The qualified bandwidth is stored in the cluster database using the <code>cxfs_admin(1M)</code> command
Monitoring service	Limited administration tools	Comprehensive tools for measuring and monitoring delivered QoS levels, including collection of per-stream performance metrics.
Control of non-GRIO-managed I/O	No control	Cluster-wide encapsulation and control.

Glossary

burstiness

The extent to which the I/O data rate for an application or node tends to vary suddenly, over short intervals of time. Contrast with an application that issues its I/O **smoothly** to the filesystem, with little variation in the rate at which it submits I/O. For example, an application that buffered a data flow in its internal buffers then periodically flushed that data to disk through multiple I/O worker threads would produce a highly bursty data flow.

ceiling allocation

A node-level allocation for which GRIO ensures that the node receives **at most** the configured bandwidth.

cluster volume

An XVM volume configured for shared access via a CXFS filesystem

cluster volume domain

An XVM concept that refers to the entire set of configured cluster volumes

device-level qualification model

The maximum sustainable bandwidth is measured for each hardware component in the I/O path, a user reservation for I/O resources is then processed for each hardware component, and is refused if any one component would become oversubscribed.

See also *filesystem-level qualification model*.

distributed bandwidth allocator (DBA)

The functionality of the `ggd2` daemon that periodically adjusts the amount of bandwidth allocated to the individual non-GRIO streams for its managed filesystems. The DBA is responsible for determining how unreserved bandwidth is distributed among the nodes with access to the filesystem.

filesystem-level qualification model

A qualified bandwidth for the entire filesystem is determined empirically by verifying that the required QoS is delivered to all of the applications running a range of realistic workloads.

The maximum sustainable bandwidth is measured across the entire filesystem under a realistic application workload.

See also *device-level qualification model*.

floor allocation

A node-level allocation for which GRIO ensures that the node receives **at least** the configured bandwidth. While there is any unallocated bandwidth, and the node is issuing I/O, `ggd2` will allocate it additional bandwidth.

GRIO

Guaranteed-rate I/O. *GRIOv1* is GRIO version 1, *GRIOv2* is GRIO version 2. GRIOv1 is a legacy product.

GRIO I/O

I/O for applications that have made an explicit GRIO reservation.

See also *non-GRIO I/O*.

GRIO server

The CXFS server-capable administration node on which the active `ggd2` daemon is running. All cluster volumes are managed by this single instance of `ggd2`. There is one GRIO server per cluster.

guarantee

The assurance made by the system to a user process that it will deliver data from a storage device at the reserved rate regardless of any other I/O activity on the system or on other nodes within its cluster.

jitter

The variation in individual service times. As the storage system approaches saturation, service-time jitter will typically increase.

local volume

An XVM volume that is dedicated for the sole use of one node.

local volume domain

An XVM concept that refers to the entire set of configured local volumes.

non-GRIO I/O

All buffered and system I/O other than I/O for applications that have made an explicit GRIO reservation.

See also *GRIO I/O*

non-GRIO stream

A dedicated system stream created for a filesystem by a node when `ggd2` begins managing that filesystem. All non-GRIO I/O issued by a node is automatically attached to and managed by this stream.

owning process

The user process that initially reserves bandwidth by calling `grio_reserve()` or `grio_reserve_fd()`.

qualified bandwidth

The maximum bandwidth that can be delivered by a filesystem (and the XVM volume on which it resides) in a given configuration under a realistic application workload such that all applications are delivered an adequate QoS.

quality of service (QoS)

The performance properties of a system service (such as worst-case bandwidth or I/O service time).

reservation

The set of QoS parameters requested by a user application. Reservation requests are forwarded to the `ggd2(1M)` bandwidth management daemon.

reservation interval

For GRIO functions where the reservation is expressed as a number of bytes delivered every number of milliseconds, that time in milliseconds is referred to as the *reservation interval*. It gives GRIO an indication as to the request's sensitivity to I/O jitter.

stream

The object within the kernel that encodes the reservation's QoS parameters and maintains the necessary scheduling and monitoring state required to fulfill the guarantee.

stream creation latency

The delay resulting when the `grio_reserve()` and `grio_reserve_fd()` calls block while bandwidth is reallocated.

Index

A

- active reservations, 21
- administering GRIO, 21
- administration node, 15
- administration tools, 52
- API overview, 45
- application-level reservation, 2
- available guaranteed-rate bandwidth, 46

B

- bandwidth availability, 21
- bandwidth management, 7
- binding open file descriptors, 46
- buffered I/O, 5

C

- capabilities, 1
- caveats, 38
- ceiling allocation, 8, 22, 23
- change a GRIO stream, 47
- client-only node, 15
- cluster database, 13, 52
- cluster integration, 6
- cluster volume domain, 15
- clusters
 - See "CXFS", 12
- CXFS, 1, 6, 10, 11, 46, 52
- CXFS administration node, 15
- CXFS client-only node, 15

D

- daemon, 52
- data layout, 12
- DBA, 9
 - DBA per-node minimum, 19
 - DBA per-volume minimum, 18
 - DBA update interval, 19
- device alignment, 12
- device-level qualification, 52
- distributed bandwidth allocator, 9

E

- encapsulation of non-GRIO I/O, 52
- ENOENT, 48

F

- F_FSSETXATTR, 6
- fcntl, 6
- features, 1
- file allocation and stream use, 6
- file descriptor binding/unbinding, 46
- file-level reservation, 49
- filesystem-level
 - qualification, 52
 - reservation, 49
- filesystems supported, 52
- flipbook application, 13
- floor allocation, 8, 22, 23
- FS_XFLAG_REALTIME, 6

G

- ggd, 52
- ggd2, 1, 6, 7, 10, 13, 15, 17, 45, 46, 50, 52
- ggd2.options, 17
- GRIO server, 15
- GRIO-enabled platforms, 11
- grio_avail(), 45
- grio_bind(), 46, 48, 49
- grio_get_stream(), 46
- grio_modify(), 47
- grio_release(), 47, 49
- grio_reserve(), 9, 49
- grio_reserve_fd(), 9, 49
- grio_unbind(), 46, 49, 50
- grioadmin, 21, 21, 52
- grioqos, 15, 30, 52
- GRIOV1 and GRIOV2 differences, 51
- guarantee, 3

H

- HBA number, 13
- how GRIO works, 5

I

- I/O metrics, 34
- I/O performance, 12
- I/O scheduler, 6
- I/O service times, 13
- installation requirements, 11
- introduction, 1

J

- jitter, 14, 37

L

- latency in stream creation, 50
- libgrio, 52
- libgrio2, 52
- library, 52
- library calls, 45
- licensing, 17
- logical unit (LUN) management, 12
- logical volumes, 52
- LUN, 12
- LUN management, 12

M

- messaging, 6
- metrics, 34
- modify a GRIO stream, 47
- monitoring QoS, 29
- monitoring service, 52
- multiOS release (CXFS), 11
- multiple-node support, 52

N

- node-level bandwidth allocation, 3
- non-GRIO managed I/O, 52
- non-GRIO stream, 7

O

- open, 6
- oversubscription, 7
- owning process, 45, 49

Q

- qualification model, 52
- qualified bandwidth, 2, 7, 12, 52
- quality of service (QOS), 37
- quality of service (QoS), 2
- quality-of-service metrics, 38
- query available bandwidth, 21

R

- RAID, 12, 13
- RAM caching, 13
- real-time data blocks, 6
- real-time schedulers, 14
- real-time subvolume, 6
- releasing a GRIO stream, 47
- releasing open file descriptors, 46
- relocation and recovery of the GRIO server, 10
- remove a GRIO stream, 47
- reservation, 2
- reservation interval, 49
- reservations list, 21
- reserve bandwidth, 49

S

- SAN, 12
- scheduler, 5, 34
- shared storage device, 12
- SIGHUP signal, 17
- software components, 6
- static bandwidth allocations, 21
- statistics, 34
- storage area network (SAN), 12
- stream
 - creation latency, 50

- management, 6
- releasing, 47
- sharing, 45
- terminology, 5
- use and file allocation, 6
- stream ID, 47
- stripe parameters, 12
- stripe unit, 12

T

- terminology, 2
- testing, 14
- traffic control, 5

U

- unallocated bandwidth, 7
- unbind a file descriptor, 46, 50
- userspace library, 52

V

- /var/log/ggd2<ggd2PID>, 17
- volume geometry, 12
- volumes, 52

X

- XFS, 52
- XLV, 52
- XVM, 52
- XVM stripe parameters, 12