



SGIconsole™ 2.1 Start Here

007-4356-004

CONTRIBUTORS

Written by Karen Johnson, Laraine MacKenzie, and Terry Schultz

Production by Karen Jacobson

Engineering contributions by Jim Grisham, Paul Jackson, Jenny Leung, Ken McDonell, Scott Henry, Tony Kavadias, Paddy Sreenivasan, and Rebecca Underwood

COPYRIGHT

© 2001 - 2002, 2003, 2004, Silicon Graphics, Inc. All rights reserved; provided portions may be copyright in third parties, as indicated elsewhere herein. No permission is granted to copy, distribute, or create derivative works from the contents of this electronic documentation in any manner, in whole or in part, without the prior written permission of Silicon Graphics, Inc.

LIMITED RIGHTS LEGEND

The software described in this document is "commercial computer software" provided with restricted rights (except as to included open/free source) as specified in the FAR 52.227-19 and/or the DFAR 227.7202, or successive sections. Use beyond license provisions is a violation of worldwide intellectual property laws, treaties and conventions. This document is provided with limited rights as defined in 52.227-14.

TRADEMARKS AND ATTRIBUTIONS

Silicon Graphics, SGI, the SGI logo, Altix, IRIS, IRIX, Onyx2, and Origin are registered trademarks and IRISconsole, NUMAflex, Performance Co-Pilot, SGIconsole, and SGI ProPack for Linux are trademarks of Silicon Graphics, Inc., in the United States and/or other countries worldwide.

Digi is a trademark of Digi International Inc. Linux is a registered trademark of Linus Torvalds, used with permission by Silicon Graphics, Inc. Windows is a registered trademarks Microsoft Corporation. Red Hat and all Red Hat-based trademarks are trademarks or registered trademarks of Red Hat, Inc. in the United States and other countries. Java and all Java-based trademarks and logos are trademarks or registered trademarks of Sun Microsystems, Inc., in the U.S. and other countries. UNIX is a registered trademark of The Open Group in the U.S. and other countries, licensed exclusively through X/Open Company, Ltd. All other trademarks mentioned herein are the property of their respective owners.

New Features in This Manual

This rewrite of *SGIconsole 2.1 Start Here* supports the 2.1 release of SGIconsole.

Major Documentation Changes

This release adds the following information:

- Updated information in "Why Use SGIconsole" on page 1.
- Added information about software and hardware requirements in "Software and Hardware Requirements" on page 2.
- Added information about upgrading your system from the SGIconsole 1.1 or 2.0 to the SGIconsole 2.1 release in "Upgrading from SGIconsole 1.1 or 2.0 to SGIconsole 2.1" on page 12.
- Added information about installing the Red Hat Redhat Enterprise WS 3.0 and Redhat Enterprise ES 3.0 release in "Installing Red Hat Enterprise Linux ES 3.0 or WS 3.0 Release" on page 21.
- Updated information in "Creating a KickStart floppy" on page 23.
- Updated configuration instructions in "Configuring SGIconsole 2.1" on page 32.
- Moved information about the IRIX command (PROM) monitor programs to "Using the PROM Command Monitor" on page 57.

Record of Revision

Version	Description
001	November 2001 Original Publication. Supports the SGIconsole 1.0 release.
002	August 2002 Supports the SGIconsole 1.1 release.
003	August 2003 Supports the SGIconsole 2.0 release.
004	June 2004 Supports the SGIconsole 2.1 release.

Contents

About This Guide	xiii
Obtaining Publications	xiii
Conventions	xiii
Reader Comments	xiv
1. Introduction	1
What Is SGIconsole	1
Why Use SGIconsole	1
Software and Hardware Requirements	2
Related Documentation	2
2. SGIconsole Software	5
Console Manager for SGIconsole	5
Performance Co-Pilot	6
System Controller Software	9
3. Getting Started	11
Setting Up SGIconsole	11
Setting Up SGIconsole Hardware	12
Upgrading from SGIconsole 1.1 or 2.0 to SGIconsole 2.1	12
Backing up SGIconsole 1.1 or 2.0 Configuration Data	13
Reconfiguring the Flash BIOS	19
File Locations Changes from SGIconsole 1.1 to SGIconsole 2.1	20
Installing Red Hat Enterprise Linux ES 3.0 or WS 3.0 Release	21
Creating a KickStart floppy	23
007-4356-004	vii

Configuring Red Hat Enterprise Linux ES 3.0 or WS 3.0 Linux Server Installation	23
Installing SGIconsole 2.1	29
Configuring SGIconsole 2.1	32
Restoring SGIconsole 1.1 or 2.0 Data	42
Determining the Hardware Address of the L2 System Controller	47
Using SGIconsole	51
Changing the Appearance of your X terminal	53
Setting up and Using the Console Manager Client on Client Machines	53
Appendix A. Additional Miscellaneous Information about SGIconsole 2.1	
Release	57
Using the PROM Command Monitor	57
Replacing EtherLite Firmware with Realport Firmware	58
Index	63

Figures

Figure 3-1	Network Configuration Screen	25
Figure 3-2	Configure TCP/IP Screen	26
Figure 3-3	Authentication Configuration Screen (First)	27
Figure 3-4	Authentication Configuration Screen (Second)	28
Figure 3-5	Services Screen	29
Figure 3-6	SGIconsole Main Window	52

Procedures

Procedure 3-1	Upgrading from SGIconsole 1.1 or 2.0 to SGIconsole 2.1	12
Procedure 3-2	Backing up SGIconsole 1.1 or 2.0 Configuration Data	13
Procedure 3-3	Reconfiguring the Flash BIOS on an SGIconsole 1.1 Platform	20
Procedure 3-4	Installing Red Hat Enterprise Linux ES 3.0 or WS 3.0 Release	21
Procedure 3-5	Configuring Red Hat Enterprise Linux ES 3.0 or WS 3.0 Linux Server Installation	24
Procedure 3-6	Installing SGIconsole 2.1	29
Procedure 3-7	Configuring SGIconsole 2.1	33
Procedure 3-8	Restoring SGIconsole 1.1 or 2.0 Data	42
Procedure 3-9	Determining the Hardware Address of the L2 System Controller	47
Procedure A-1	Using the PROM Command Monitor	57
Procedure A-2	Replacing EtherLite Firmware with Realport Firmware	58

About This Guide

This guide documents SGIconsole release 2.1.

SGIconsole software allows you to manage multiple servers.

This guide contains the following chapters:

- Chapter 1, "Introduction" on page 1
- Chapter 2, "SGIconsole Software" on page 5
- Chapter 3, "Getting Started" on page 11

Obtaining Publications

To obtain SGI documentation, go to the SGI Technical Publications Library at:

<http://docs.sgi.com>

You can view documentation online or order printed copies through the library.

Conventions

The following conventions are used throughout this document:

Convention	Meaning
<code>command</code>	This fixed-space font denotes literal items such as commands, files, routines, path names, signals, messages, and programming language structures.
<i>variable</i>	Italic typeface denotes variable entries and words or concepts being defined.

user input	This bold, fixed-space font denotes literal items that the user enters in interactive sessions. Output is shown in nonbold, fixed-space font.
<code>manpage(x)</code>	Man page section identifiers appear in parentheses after man page names.

Reader Comments

If you have comments about the technical accuracy, content, or organization of this document, contact SGI. Be sure to include the title and document number of the manual with your comments. (Online, the document number is located in the front matter of the manual. In printed manuals, the document number is located at the bottom of each page.)

You can contact SGI in any of the following ways:

- Send e-mail to the following address:

`techpubs@sgi.com`

- Use the Feedback option on the Technical Publications Library World Wide Web page:

`http://docs.sgi.com`

- Contact your customer service representative and ask that an incident be filed in the SGI incident tracking system.
- Send mail to the following address:

Technical Publications
SGI
1500 Crittenden Lane, M/S 535
Mountain View, California 94043-1351

SGI values your comments and will respond to them promptly.

Introduction

This chapter introduces SGIconsole. The sections in this chapter include:

- "What Is SGIconsole" on page 1
- "Why Use SGIconsole" on page 1
- "Related Documentation" on page 2

What Is SGIconsole

SGIconsole 2.1 is a suite of software that allows you to manage multiple SGI servers running the IRIX or Linux operating system. These servers include SGI servers, SGI partitioned systems and large, single-system-image servers, including legacy SGI servers and Silicon Graphics graphical systems. SGIconsole can also provide console services for non SGI servers.

SGIconsole consists of software suite including the Console Manager package and Performance Co-Pilot, which provides access to common remote management tools for hardware and software. It is intended to replace the SGI IRISconsole product.

SGIconsole 2.1 assumes your SGIconsole machine and your remote display for viewing and running SGIconsole applications are behind a secure firewall. SGIconsole 2.1 uses standard Linux security features. For information on how to improve security when using SGIconsole, see the "Console Manager Server Security in Secure Mode" section in the *Console Manager for SGIconsole Administrator's Guide*.

Note: SGIconsole supports remote-displaying. For a list of supported SGIconsole clients and displays, see the SGIconsole release notes.

Why Use SGIconsole

SGIconsole provides a central server control environment that has the following features:

- Support for SGI clusters, partitioned systems, and large single-system-image servers

- Easily expanded to support additional servers
- Software applications and tools for installation and configuration, console functionality, and for monitoring and managing system-level performance
- Web-based user interface

SGIconsole can manage SGI Altix and SGI Origin servers better than any other console server product. SGIconsole can communicate with L1, L2, module System Controller (MSC), and rackmount system multimodule System Controller (MMSC) system controllers and provide reset/nonmaskable interrupt (NMI)/power up/power down functionality for SGI servers. SGI console can also provide console functionality for non SGI servers. For more information on SGI controller software, see "System Controller Software" on page 9.

A single SGIconsole can support up to 64 servers. SGIconsole GUI is Java-based and can be run from Windows, Linux, or IRIX clients.

Software and Hardware Requirements

The SGIconsole 2.1 release requires that you update to the Red Hat Enterprise Linux ES 3.0 or Red Hat Enterprise Linux WS 3.0 release. The Red Hat 8 and Red Hat 9 releases are not supported on SGIconsole 2.1.

The hardware requirements for the SGIconsole 2.1 release are the same as for the SGIconsole 2.0 release. For information on SGIconsole hardware requirements, see the *SGIconsole Hardware Connectivity Guide*.

Related Documentation

The following SGIconsole and related documents are available at <http://docs.sgi.com>:

- *SGIconsole Hardware Connectivity Guide*

This guide describes how to install the SGIconsole for use with the SGI Origin 200, SGI Origin 2000, and SGI Origin 300, and SGI Origin 3000, SGI Altix 350 and SGI Altix 3000 products.

- *Console Manager for SGIconsole Administrator's Guide*

This guide documents the Console Manager graphical user interface for SGIconsole that allows it to control multiple SGI servers, SGI partitioned systems, large, single-system image servers, and clusters of systems.

- *IRISconsole to SGIconsole Migration Guide*

This guide compares the SGIconsole software to the IRISconsole software.

- *Performance Co-Pilot (PCP) Programmer's Guide*

This guide describes how to write PCP extensions (Performance Metric Domain Agents, or PMDAs) using the PMAPI, for customizing and adapting PCP for the collection application performance data on operating system and application software components not addressed by the PCP base software.

- *Performance Co-Pilot (PCP) for IRIX User's and Administrator's Guide*

This guide describes the Performance Co-Pilot software package of advanced performance tools for the SGI family of graphical workstations and servers. It documents Performance Co-Pilot features that are embedded in the IRIX operating system. It is a prequel to the Performance Co-Pilot for IRIX Advanced User's and Administrator's Guide.

- *Performance Co-Pilot for IA-64 Linux User's and Administrator's Guide*

This guide documents the Performance Co-Pilot software package running on IA-64 Linux systems. Performance Co-Pilot provides a systems-level suite of tools that cooperate to deliver integrated performance monitoring and performance management services spanning the hardware platforms, operating systems, service layers, Database Management Systems (DBMSs), and user applications.

- *SGI L1 and L2 Controller Software User's Guide*

This guide describes how to use the L1 and L2 controller commands at your system console to monitor and manage the following systems: SGI Origin 3000 series of servers, SGI Origin 300 series of servers, SGI Altix 350 systems, and SGI Altix 3000 family of servers and superclusters, SGI Origin 300 systems with NUMALink, SGI Onyx 3000 series of graphics systems, and the SGI Onyx 300 series of graphics systems.

- *SGI Origin 3000 Series Owner's Guide*

This guide provides an overview, and describes how to set up and operate the SGI Origin 3000 series of servers.

- *SGI Origin 300 User's Guide*

This guide provides an overview, and describes how to set up and operate the SGI Origin 300 server.

- *SGI Altix 3000 User's Guide*

This guide provides an overview of the architecture and descriptions of the major components that compose the SGI Altix 3000 family of servers and superclusters. It also provides the standard procedures for powering on and powering off the system, basic troubleshooting information, and important safety and regulatory specifications.

- *SGI Altix 350 System User's Guide*

Provides an overview of the Altix 350 system components, and it describes how to set up and operate this system.

- *SGI Altix 350 Quick Start Guide*

Guides a knowledgeable user through the installation, setup, and simple configuration of most SGI Altix 350 systems.

SGIconsole Software

SGIconsole includes the following software tools that enable you to monitor and manage multiple servers:

- "Console Manager for SGIconsole" on page 5
- "Performance Co-Pilot" on page 6
- "System Controller Software" on page 9

Console Manager for SGIconsole

Console Manager is a graphical user interface for the SGIconsole management and monitoring tool used to control multiple nodes. A *node* is an SGI server or graphic system. For detailed information about Console Manager, see the *Console Manager for SGIconsole Administrator's Guide*. The manual is provided on the SGIconsole software installation CD and is available at the SGI Technical Publications library at: <http://docs.sgi.com>.

Console Manager provide the following functions:

- Console window
- Power down, power up, reset, or send a nonmaskable interrupt (NMI) to a node
- Get, steal, spy system console and system controller console
- Console logging
- Node and task privileges for the Console user
- Continuous system connection without console window active
- Numerous connections to any one system
- Remote access
- Console security

Only the root user of Console Manager can add or delete other users, assign privilege, and run command line interfaces (CLIs). Console Manager runs only one `setuid` program called `runpriv`.

`tscm(1)` is a command line interface to SGIconsole that any normal user can use. It provides an interactive menu-driven environment for performing console, logging, and power control operations on nodes configured in SGIconsole. For more information about `tscm(1)`, see *Console Manager for SGIconsole Administrator's Guide* and the `tscm(1)` man page.

Performance Co-Pilot

SGI Performance Co-Pilot is a distributed toolkit that administrators can use to monitor and manage system-level performance of servers (such as system load, network load, disk hotspots, and capacity planning). The SGIconsole implementation of Performance Co-Pilot uses existing Performance Co-Pilot services on the managed servers to export performance data that is used by monitoring tools on the SGIconsole system. Note that IRIX servers must have Performance Co-Pilot licenses in order for this toolkit to function.

Initial access to the Performance Co-Pilot toolkit is accomplished through the SGIconsole GUI, which provides a Web-based interface for launching Performance Co-Pilot tools. Performance Co-Pilot tools monitor the following resource demands and performance metrics on the managed servers:

- Desktop gadget to monitor overall system activity across the following:
 - CPUs
 - Disks
 - Load average
 - Network interfaces
 - Memory usage
- Time-series (stripchart) monitoring of the following:
 - Summary statistics for an overview
 - Aggregate CPU utilization
 - Aggregate demand for disk bandwidth
 - File system fullness
 - Network throughput per interface

- NFS client and server call rates
- Virtual memory paging activity
- Aggregate system call rates
- Three-dimensional performance visualizations for the following:
 - Per processor CPU utilization
 - Per spindle disk activity
 - CPU and network activity
 - NUMAlink interconnect activity for SGI Origin 2000 series and SGI Origin 3000 series and SGI Altix 3000 family of servers and superclusters and SGI Altix 350 systems.

Performance Co-Pilot tools on the SGIconsole system can also be used to create customized performance monitoring and performance management services for the managed servers. The following list describes relevant tools:

<code>clustervis</code>	Three-dimensional bar charts of CPU utilization and network traffic for one or more nodes (hosts) in a cluster. The presentation provides a scalable overview of the performance of large clusters. For more information see the <code>clustervis(1)</code> man page.
<code>dkvis</code>	A three-dimensional bar chart showing activity in the disk subsystem. For more information see the <code>dkvis(1)</code> man page.
<code>mpvis</code>	A three-dimensional bar chart of multiprocessor CPU utilization. For more information see the <code>mpvis(1)</code> man page.
<code>oview</code>	Three-dimensional bar charts covering many aspects of system performance, including disk use, job load, memory, CPU activity, and network I/O. For more information see the <code>oview(1)</code> man page.
<code>pmchart</code>	Trends over time for arbitrarily selected performance metrics from one or more nodes, or from one of more performance metric domains. For more information see the <code>pmchart(1)</code> man page.

<code>pmgcluster</code>	An animated display based on the hardware configuration of multiple servers, showing the same types of information as that provided by the <code>pmgsys</code> utility. For more information see the <code>pmgcluster(1)</code> man page.
<code>pmgsys</code>	An animated display based on the hardware configuration of a server, showing CPU utilization, load average, memory utilization, network bandwidth demand, and disk activity. For more information see the <code>pmgsys(1)</code> man page.

For more detailed information on Performance Co-Pilot , see the Performance Co-Pilot documentation provided on the SGIconsole software CD or available online from the SGI Technical Publications Library at <http://docs.sgi.com> .

The Performance Co-Pilot documents describe the IRIX version of the Performance Co-Pilot product, which differs only slightly from the Linux version. Table 2-1 summarizes differences in file and directory pathnames between the IRIX and Linux operating systems.

Table 2-1 IRIX and Linux File/Directory Pathnames

File/Directory	IRIX	Linux
<code>rc/startup scripts</code>	<code>/etc/init.d</code>	<code>/etc/rc.d/init.d</code>
Private PCP binaries	<code>/usr/pcp/bin</code>	<code>/usr/share/pcp/bin</code>
Shared PCP files (shareable for diskless)	<code>/usr/pcp</code>	<code>/usr/share/pcp</code>
Directory of manual pages	<code>/usr/share/catman</code>	<code>/usr/man</code>
PCP logs	<code>/var/adm/pcplog</code>	<code>/var/log/pcp</code>
PCP documentation	<code>/var/pcp</code>	<code>/usr/doc/pcp-<i>Version</i></code>
GUI privileged commands	<code>/usr/sysadm/privbin</code>	<code>/usr/lib/sysadm/privbin</code>
GUI commands log	<code>/var/sysadm/salog</code>	<code>/var/lib/sysadm/salog</code>

File/Directory	IRIX	Linux
Directory for PCP demos and examples	<code>/var/pcp/demos</code>	<code>/usr/share/pcp/demos</code>
magic, as used by files (1)	<code>/etc/magic</code>	<code>/usr/share/magic</code>

System Controller Software

System controller software enables you to use an SGI Origin 3000 or SGI Altix 3000 series server's or SGI Altix 350 system's L1 controllers and the hardware L2 controllers or SGI Origin 2000 system single module System Controller (MSC) or SGI Origin 2000 rackmount system multimodule System Controller (MMSC) to manage and monitor the server from a remote system console. For more information on system controllers, refer to the documentation listed in "Related Documentation" on page 2.

Please refer to <http://support.sgi.com> (SGI supportfolio web site) for the latest system controller software.

Note: L2 firmware version 1.28.1 (or later) supports the L2 password. It is available in the System Controller Software 1.6 release (you can download it from <http://support.sgi.com/>).

Getting Started

This chapter guides you through the steps for setting up and configuring SGIconsole hardware and software. The sections in this chapter include:

- "Setting Up SGIconsole" on page 11
- "Using SGIconsole" on page 51

Setting Up SGIconsole

To set up and configure your SGIconsole 2.1 system, follow the procedures described in these subsections:

- "Setting Up SGIconsole Hardware" on page 12
- "Installing Red Hat Enterprise Linux ES 3.0 or WS 3.0 Release" on page 21
- "Configuring Red Hat Enterprise Linux ES 3.0 or WS 3.0 Linux Server Installation" on page 23
- "Installing SGIconsole 2.1" on page 29
- "Configuring SGIconsole 2.1" on page 32

Note: The SGIconsole reinstallation procedure is the same as the installation procedure after you have removed the SGIconsole rpms.

Note: If your SGIconsole machine has a blank disk, then you will need to go through all the procedures in the order described in this section.

Note: SGIconsole 2.1 assumes your SGIconsole machine and your remote display for viewing and running SGIconsole applications are behind a secure firewall. SGIconsole 2.1 uses standard Linux security features. For information on how to improve security when using SGIconsole, see the " Console Manager Server Security in Secure Mode" section in the *Console Manager for SGIconsole Administrator's Guide*.

Setting Up SGIconsole Hardware

To determine which hardware platforms and multiplexers that can be used with SGIconsole and to cable and configure SGIconsole hardware, read and follow the instructions in the *SGIconsole Hardware Connectivity Guide*. This guide is delivered with your SGIconsole system and is available online at <http://docs.sgi.com> .

Upgrading from SGIconsole 1.1 or 2.0 to SGIconsole 2.1

This section contains procedures to follow if you are updating your system from SGIconsole 1.1 or 2.0 to SGIconsole 2.1. The SGIconsole 2.1 release requires that you update to the Red Hat Enterprise Linux ES 3.0 or Red Hat Enterprise Linux WS 3.0 release.

Procedure 3-1 Upgrading from SGIconsole 1.1 or 2.0 to SGIconsole 2.1

To upgrade your system from SGIconsole 1.1 or 2.0 to SGIconsole 2.1, perform these steps:

1. Back up your SGIconsole 1.1 or 2.0 configuration data by following the steps in "Backing up SGIconsole 1.1 or 2.0 Configuration Data" on page 13.
2. Reconfigure the flash BIOS on your SGI 1100 server as described in the Procedure 3-3, page 20. Follow the Redhat Enterprise manual to install the distribution on your SGIconsole server or laptop.
3. Install the Red Hat Enterprise Linux ES 3.0 or WS 3.0 release as described in "Installing Red Hat Enterprise Linux ES 3.0 or WS 3.0 Release" on page 21.
4. Configure the Red Hat Enterprise Linux ES 3.0 or WS 3.0 server installation as described in "Configuring Red Hat Enterprise Linux ES 3.0 or WS 3.0 Linux Server Installation" on page 23.
5. Install the SGIconsole 2.1 release as described in "Installing SGIconsole 2.1" on page 29.
6. Configure the SGIconsole 2.1 release as described in "Configuring SGIconsole 2.1" on page 32.
7. Restore SGIconsole 1.1 or 2.0 data as described in "Restoring SGIconsole 1.1 or 2.0 Data" on page 42.

Backing up SGIconsole 1.1 or 2.0 Configuration Data

This section describes the steps you need to take to back SGIconsole 1.1 or 2.0 configuration data.

Procedure 3-2 Backing up SGIconsole 1.1 or 2.0 Configuration Data

To back up SGIconsole 1.1 or 2.0 configuration data, perform the following procedure:

1. Insert and mount an empty DOS formatted floppy using the mount command, as follows:

```
[root@linux3 sysadm]# mount /dev/fd0
```

2. Use the copy command to save the dhcpd configuration file that contains needed hardware and device address information for the L2 system controllers and Digi EL-16 multiplexers used by SGIconsole, as follows:

```
[root@linux3 sysadm]# cp /etc/dhcpd.conf /mnt/floppy/dhcpd.conf
```

Use the cat(1) command to view an example of the /etc/dhcpd.conf file, as follows:

```
[root@linux3 /root]# cat /etc/dhcpd.conf
# Created by SGIconsole_startup. Do not remove this line.
# Define subnet
subnet 192.12.1.0 netmask 255.255.255.0 {
}

# Begin group options
group {
    option subnet-mask 255.255.255.0;
    option broadcast-address 192.12.1.255;

    # Device information
    host dino-12 {
        hardware Ethernet 08:00:69:11:81:18;
        fixed-address 192.12.1.10;
    }
    # Device information
    host el-16 {
        hardware Ethernet 00:a0:e7:21:88:f9;
        fixed-address 192.12.1.20;
    }
}
```

```
    host el-16-2 {
        hardware Ethernet 00:a0:e7:21:c7:e3;
        fixed-address 192.12.1.21;
    }
}
# End group options
```

3. For **SGIconsole 1.1**, use the copy command to save Digi configuration file that contains additional information from the Etherlite driver, as follows:

```
[root@linux3 sysadm]# cp /etc/els.conf /mnt/floppy/els.conf
```

Use the `cat(1)` command to view an example of an `els.conf` file, as follows:

```
[root@linux3 /root]# cat /etc/els.conf
#elsnn EL-type IP-address options( e.g. -t 600)
els0 EL-16 192.12.1.20 -t=120
els1 EL-16 192.12.1.21 -t=120
```

For **SGIconsole 2.0**, use the copy command to save Digi configuration file that contains additional information from the Realport driver (see the `dgrp_cfg_node(8)` man page for more information), as follows:

```
[root@linux3 etc]# cp /etc/dgrp.backing.store /mnt/floppy/dgrp.backing.store
```

Use the `cat(1)` command to view `dgrp.backing.store` file, as shown in the example that follows:

```
root@linux3 root]# cat /etc/dgrp.backing.store
#
# Format:
#
#   ID  IP  PortCount  SpeedString  IPPort  Mode  Owner  Group
#
# If any of the last five options should use the default, the
# string "default" appears instead.
#

N0 192.12.1.20 16 auto default default default default
N1 192.12.1.21 16 auto default default default default
```

4. Use the copy command to save the VACM configuration file, as follows:

```
cp /usr/lib/vacm/vacm_configuration /mnt/floppy/vacm_configuration
```

Use the cat(1) command to view an example of the vacm_configuration file, as follows:

```
[root@linux3 /root]# cat /usr/lib/vacm/vacm_configuration
# VACM Configuration file
# Autogenerated by Nexxus - Thu Jun  5 17:23:19 2003

GROUP:default
#Definition for node 'O3000_dino_L2'
NODE:O3000_dino_L2
VAR:L2:L2_NODE:192.12.1.10
VAR:GLOBAL:IP_ADDRESS:dino.engr.sgi.com
END_NODE

#Definition for node 'O300_skinwalker_L1'
NODE:O300_skinwalker_L1
VAR:L1:L1_SERIAL_PORT:/dev/ttyN001
VAR:GLOBAL:IP_ADDRESS:skinwalker.engr.sgi.com
END_NODE

#Definition for node 'O200_lightning1_MSC'
NODE:O200_lightning1_MSC
VAR:MSC:USER:root
VAR:MSC:(M)MSC_SERIAL_PORT:/dev/ttyN012
VAR:MSC:CONSOLE_SERIAL_PORT:/dev/ttyN011
VAR:MSC:CONSOLE_SERIAL_PORT_SPEED:9600
VAR:GLOBAL:IP_ADDRESS:lightning1.engr.sgi.com
VAR:MSC:MSC_PASSWORD:none
END_NODE

#Definition for node 'O2000_espanola_MMSC'
NODE:O2000_espanola_MMSC
VAR:MMSC:USER:root
VAR:MMSC:(M)MSC_SERIAL_PORT:/dev/ttyN007
VAR:GLOBAL:IP_ADDRESS:espanola.engr.sgi.com
VAR:MMSC:MMSC_SUPERVISOR_PASSWORD:
VAR:MMSC:MMSC_SERVICE_PASSWORD:
END_NODE
```

```
#Definition for node 'sgi550_scar_SCO'
NODE:sgi550_scar_SCO
VAR:SCO:SCO_SERIAL_PORT:/dev/ttyN010
VAR:SCO:SCO_SERIAL_PORT_SPEED:9600
VAR:SCO:SCO_SERIAL_PORT_PARITY:NONE
VAR:SCO:SCO_SERIAL_PORT_HANDSHAKING:NONE
VAR:GLOBAL:IP_ADDRESS:scar.engr.sgi.com
END_NODE
GROUP_END
```

```
#End of node definitions
```

```
#Definition for user 'blum'
USER:blum
PASSWORD:HIDm9A.Qj1Dz2
GROUP:default
DEFAULT_MODULE_POLICY:ALLOW
DEFAULT_ADDRESS_POLICY:DENY
ADDR_ACL:ALLOW:127.0.0.1:32
END_USER
```

```
#Definition for user 'root'
USER:root
PASSWORD:HIX6StIDSOMvU
GROUP:default
DEFAULT_MODULE_POLICY:ALLOW
DEFAULT_ADDRESS_POLICY:DENY
ADDR_ACL:ALLOW:127.0.0.1:32
END_USER
```

```
#Definition for user 'nisuser'
USER:nisuser
PASSWORD:HIX6StIDSOMvU
GROUP:default
DEFAULT_MODULE_POLICY:ALLOW
DEFAULT_ADDRESS_POLICY:DENY
ADDR_ACL:ALLOW:127.0.0.1:32
END_USER
```

```
#Definition for user 'testuser'
```

```
USER:testuser
PASSWORD:HIx6StIDsOMvU
GROUP:default
DEFAULT_MODULE_POLICY:ALLOW
DEFAULT_ADDRESS_POLICY:DENY
ADDR_ACL:ALLOW:127.0.0.1:32
END_USER
```

5. Use the copy command to save the SGIconsole data directory that contains all group, user, and node information, as follows:

```
cp -R /var/lib/SGIconsole/ /mnt/floppy/
```

Use the ls(1) command to view the contents of SGIconsole directory, as follows:

```
[root@linux3]# ls -R SGIconsole/
SGIconsole/:
group  groups  nodes  users

SGIconsole/group:

SGIconsole/groups:
alltasks_all_nodes  sometasks

SGIconsole/nodes:
O2000_espanola_MMSC  O3000_dino_L2          sgi550_scar_SCO
O200_lightning1_MSC  O300_skinwalker_L1

SGIconsole/users:
nisuser  root  testuser
```

6. Use the copy command to save system password file that contains local user information, as follows:

```
[root@linux3 sysadm]# cp /etc/passwd /mnt/floppy/passwd
```

Use the cat(1) command to view an example of the /etc/passwd file, as follows:

```
[root@linux3 SGIconsole-logs]# cat /etc/passwd
root:x:0:0:root:/root:/bin/bash
bin:x:1:1:bin:/bin:
daemon:x:2:2:daemon:/sbin:
adm:x:3:4:adm:/var/adm:
lp:x:4:7:lp:/var/spool/lpd:
```

```
sync:x:5:0:sync:/sbin:/bin/sync
shutdown:x:6:0:shutdown:/sbin:/sbin/shutdown
halt:x:7:0:halt:/sbin:/sbin/halt
mail:x:8:12:mail:/var/spool/mail:
news:x:9:13:news:/var/spool/news:
uucp:x:10:14:uucp:/var/spool/uucp:
operator:x:11:0:operator:/root:
games:x:12:100:games:/usr/games:
gopher:x:13:30:gopher:/usr/lib/gopher-data:
ftp:x:14:50:FTP User:/home/ftp:
nobody:x:99:99:Nobody:/:
xfs:x:43:43:X Font Server:/etc/X11/fs:/bin/false
named:x:25:25:Named:/var/named:/bin/false
gdm:x:42:42:./home/gdm:/bin/bash
piranha:x:60:60:./home/httpd/html/piranha:/dev/null
postgres:x:26:26:PostgreSQL Server:/var/lib/pgsql:/bin/bash
pvm:x:24:24:./usr/share/pvm3:/bin/bash
squid:x:23:23:./var/spool/squid:/dev/null
testuser:x:54580:31:./home/testuser:/bin/bash
```

7. Use the copy command to save shadow password file, if enabled, that contains additional local user information, as follows:

```
[root@linux3 sysadm]# cp /etc/shadow /mnt/floppy/shadow
```

Use the cat(1) command to view an example of the /etc/shadow file, as follows:

```
[root@linux3 SGIconsole-logs]# cat /etc/shadow
root:$1$H8q0Kzaf$ZWksDiHzk1LDtCdK3N7tt1:12194:0:99999:7:-1:-1:134539228
bin:*:12194:0:99999:7:::
daemon:*:12194:0:99999:7:::
adm:*:12194:0:99999:7:::
lp:*:12194:0:99999:7:::
sync:*:12194:0:99999:7:::
shutdown:*:12194:0:99999:7:::
halt:*:12194:0:99999:7:::
mail:*:12194:0:99999:7:::
news:*:12194:0:99999:7:::
uucp:*:12194:0:99999:7:::
operator:*:12194:0:99999:7:::
games:*:12194:0:99999:7:::
gopher:*:12194:0:99999:7:::
```



```
ftp:*:12194:0:99999:7:::
nobody:*:12194:0:99999:7:::
xfs:!!:12194:0:99999:7:::
named:!!:12194:0:99999:7:::
gdm:!!:12194:0:99999:7:::
piranha:!!:12194:0:99999:7:::
postgres:!!:12194:0:99999:7:::
pvm:!!:12194:0:99999:7:::
squid:!!:12194:0:99999:7:::
testuser:xWMVKkegTeXg:12209:0:99999:7:::
```

8. Use the copy command to save the `sysadm` user file that contains all SGIconsole usernames, as follows:

```
[root@linux3 sysadm]# cp /var/lib/sysadm/privilegedUsers /mnt/floppy/privilegedUsers
```

Use the `cat(1)` command to view an example of `privilegedUsers` file, as follows:

```
[root@linux3 sysadm]# cat privilegedUsers
nisuser testuser
```

9. Console log files are most likely to large to fit on the floppy disk. They should be saved to another system if necessary. The Console log files are located in the following directory:

```
/home/httpd/html/SGIconsole-logs/
```

10. Unmount and remove the floppy, as follows:

```
[root@linux3 sysadm]# umount /mnt/floppy
```

Reconfiguring the Flash BIOS

Note: This procedure is only required if you are using SGI 1100 as your SGIconsole server.

The SGI 1100 server provided with SGIconsole 1.1 is single processor. There is a basic input/output system (BIOS) change that you must perform before installing Red Hat Enterprise Linux ES 3.0 or WS 3.0 described in the following procedure:

Procedure 3-3 Reconfiguring the Flash BIOS on an SGIconsole 1.1 Platform

To reconfigure the flash BIOS on your SGIconsole 1.1 platform, perform the following procedure:

1. At the SGI logo screen press **Ctrl-Alt-ESC** to enter **Setup**.
2. Select **Load Default Settings** from the menu and press **Enter**.
3. Press **F8** to enable advanced options.
4. Select **Advanced Options** from the menu.
5. Select **CPU Frequency** from the **Advanced Options** menu.
6. Go to the Single Processor MP Table and use the left/right arrow to select **Disabled**.
7. Use the ESC key to exit out of **Setup**.
8. Boot the system.

File Locations Changes from SGIconsole 1.1 to SGIconsole 2.1

This section describes file location changes from the SGIconsole 1.1 release to the SGIconsole 2.1 release.

The following file locations have changed:

- In Red Hat Enterprise Linux ES 3.0 or WS 3.0 releases, the default document root for Apache web server is `/var/www/html`. In the Red Hat 6.2 Base Linux release, it is located in `/home/httpd/html`.
- In the Red Hat Enterprise Linux ES 3.0 or WS 3.0 releases, the `xinetd(8)` extended Internet services daemon replaces the `inetd(8)` daemon.
- In the Red Hat Enterprise Linux ES 3.0 or WS 3.0 releases, the `/etc/xinetd.conf` configuration file replaces the `/etc/inetd.conf` configuration file with additional configuration files for Red Hat Enterprise Linux ES 3.0 or WS 3.0 in the `/etc/xinetd/xinetd.d` directory.
- The location of the SGIconsole log files has changed from `/home/httpd/html/SGIconsole_logs` to `/var/www/html/SGIconsole_logs`.

- The `/tmp/els00.log` no longer exists. To determine the status of your EL-16 device, you can view information in the `/proc/dgrp/config` and `/proc/dgrp/nodeinfo` files.

Installing Red Hat Enterprise Linux ES 3.0 or WS 3.0 Release

SGI suggests that you begin with a clean install of the Red Hat Linux ES 3.0 or WS 3.0 release.

Note: If you are installing Red Hat Enterprise Linux ES 3.0 or WS 3.0 on an SGIconsole 1.1 platform make sure you have performed Procedure 3-3.

Procedure 3-4 Installing Red Hat Enterprise Linux ES 3.0 or WS 3.0 Release

Follow these instructions:

1. Back up your data (see "Backing up SGIconsole 1.1 or 2.0 Configuration Data" on page 13).
2. Insert Red Hat Enterprise Linux ES 3.0 or WS 3.0 CD number 1 and reboot the system from the CD. Follow the instructions to launch the Red Hat Enterprise Linux installer.

Note: Kickstart floppy images are provided to automate the installation. At the **boot:** prompt, after booting Red Hat Enterprise Linux ES 3.0 or WS 3.0 CD number 1, insert the appropriate kickstart floppy and enter **linux ks=floppy** then enter. The installer will start, select defaults, partition the system drive, start the installation, then prompt when necessary to insert the additional Red Hat Enterprise Linux CDs 2, 3, and 4. See "Creating a KickStart floppy" on page 23 for instructions to create appropriate floppy from the SGIconsole-2.1 CD.

3. Red Hat Enterprise Linux ES 3.0 packages selected to install are, as follows:
 - `engineering-and-scientific`
 - `legacy-software-development`
 - `editors`
 - `system-tools`

- `base-x`
- `web-server`
- `development-tools`
- `text-internet`
- `legacy-network-server`
- `server-cfg`
- `dialup`
- `admin-tools`
- `ftp-server`
- `network-server`
- `kernel-development`
- `graphical-internet`
- `compat-arch-support`

Red Hat Enterprise Linux WS 3.0 adds these additional packages, as follows:

- `gnome-desktop`
- `sound-and-video`
- `xemacs`
- `graphics`
- `office`
- `mail-server`
- `smb-server`
- `printing`

Additional RPMs to install are, (install after `anaconda(1)` has finished and you are logged in as root on a running system), as follows:

- `telnet-server-0.17-26`

- `tftp-server-0.32-4`
- `dhcp-3.0pl2-6.14`

Creating a KickStart floppy

For convenience, a KickStart floppy image resides on the SGIconsole 2.1 CD under the `images` directory.

There are now two kickstart floppy images on the CD. One for the Red Hat Enterprise Linux ES 3.0 and one for the Red Hat Enterprise Linux WS 3.0, as follows:

- `SGIconsole2.1-RHES3.0.img`
- `SGIconsole2.1-RHWS3.0.img`

To create a KickStart floppy, copy the image to a blank DOS-formatted floppy disk:

1. Insert and mount the SGIconsole 2.1 CD, using the following command:

```
mount /dev/cdrom /mnt/cdrom
```

2. Insert the blank, formatted floppy.
3. Copy the image from the CD to the floppy, using the following commands:
 - For the Red Hat Enterprise Linux ES 3.0 release, perform the following:

```
dd if=/mnt/cdrom/images/SGIconsole2.1-RHES3.0.img of=/dev/fd0
```

- For the Red Hat Enterprise Linux WS 3.0 release, perform the following:

```
dd if=/mnt/cdrom/images/SGIconsole2.1-RHWS3.0.img of=/dev/fd0
```

For information on to use the KickStart floppy to boot a system, see "Installing Red Hat Enterprise Linux ES 3.0 or WS 3.0 Release" on page 21.

Configuring Red Hat Enterprise Linux ES 3.0 or WS 3.0 Linux Server Installation

If, when you power up the system, it displays only a blank screen, you will need to install Red Hat Enterprise Linux ES 3.0 (refer to "Installing Red Hat Enterprise Linux ES 3.0 or WS 3.0 Release" on page 21). When the installation is complete, reboot the system and continue with configuring Red Hat Enterprise Linux ES 3.0 or WS 3.0 Linux.

The system will boot up running the Red Hat Enterprise Linux ES 3.0 or WS 3.0 Linux Server kernel to the init level 3 (text mode, multiuser). You will be automatically prompted for the following information to configure Red Hat Enterprise Linux ES 3.0 or WS 3.0 for use by SGIconsole. You will need to provide certain information such as host name, IP address, and so on. Have this information available before you start this procedure.

Note: If you are interrupted midway through this procedure, or if you want to rerun this configuration, enter the following command at the Linux prompt (as `root`):
`touch /.unconfigured` Then reboot the system and enter the configuration information at the prompts.

If you are running Red Hat Enterprise Linux ES 3.0 on your system, run the configuration software by hand after initial login as `root`. Default root password is set to `sgisgi`.

Procedure 3-5 Configuring Red Hat Enterprise Linux ES 3.0 or WS 3.0 Linux Server Installation

1. The first screen will display **Changing password for user root** after mounting local filesystems, then it will prompt you for a new UNIX password. Set the `root` password to improve the system's security behind your firewall.
2. After the password is entered and verified, the first prompt will ask if you want to set up networking, as shown in Figure 3-1. To allow SGIconsole to access the systems it will be monitoring and managing, select **Yes**.

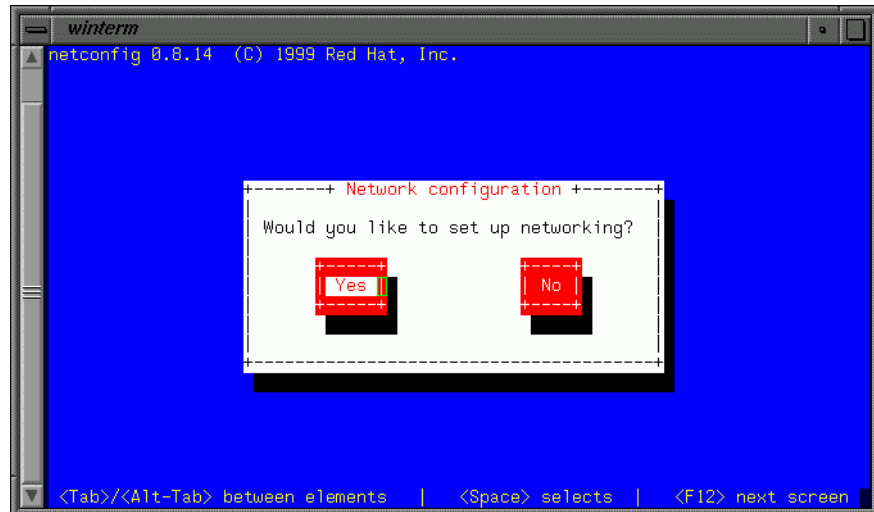


Figure 3-1 Network Configuration Screen

3. The **Configure TCP/IP** screen will prompt you to assign an Internet Protocol (IP) address to the SGIconsole system so it can participate in your network, as well as a netmask (for example, 255.255.255.0). If your network uses DNS, fill in the default gateway (IP) and primary nameserver.

After you have entered the information for each of these settings, click on **OK**.

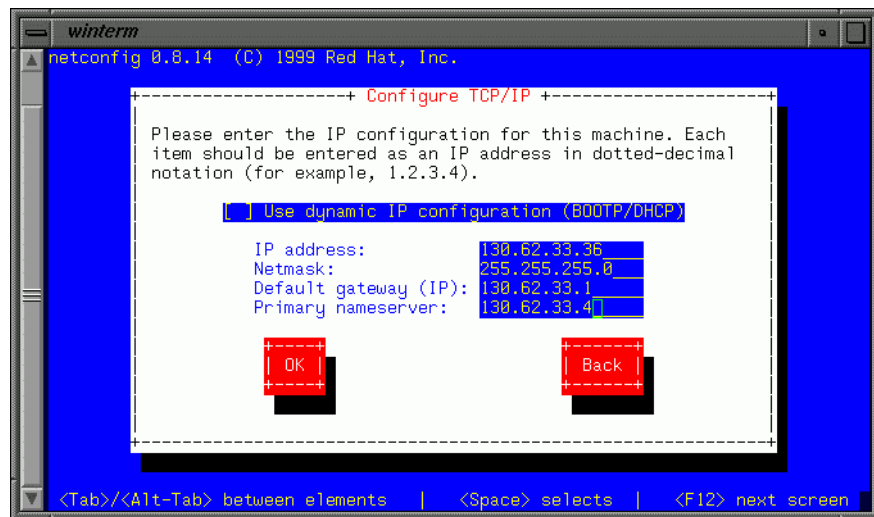


Figure 3-2 Configure TCP/IP Screen

4. In the **Authentication Configuration** screens, set authentication to control other users' access to the SGIconsole. In the first screen, select **Use NIS** for NIS users.

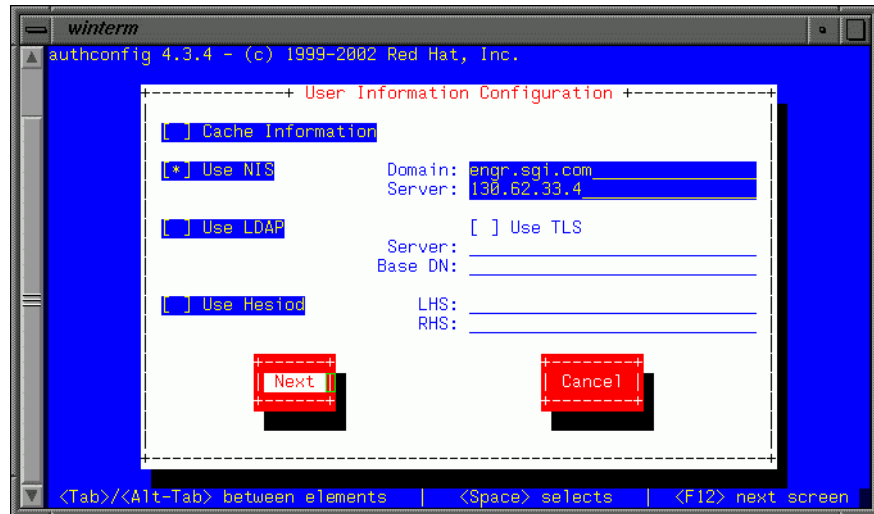


Figure 3-3 Authentication Configuration Screen (First)

In the second screen, select **Use Shadow Passwords** and **Enable MD5 Passwords**. After you have made your selections, click on **OK**.

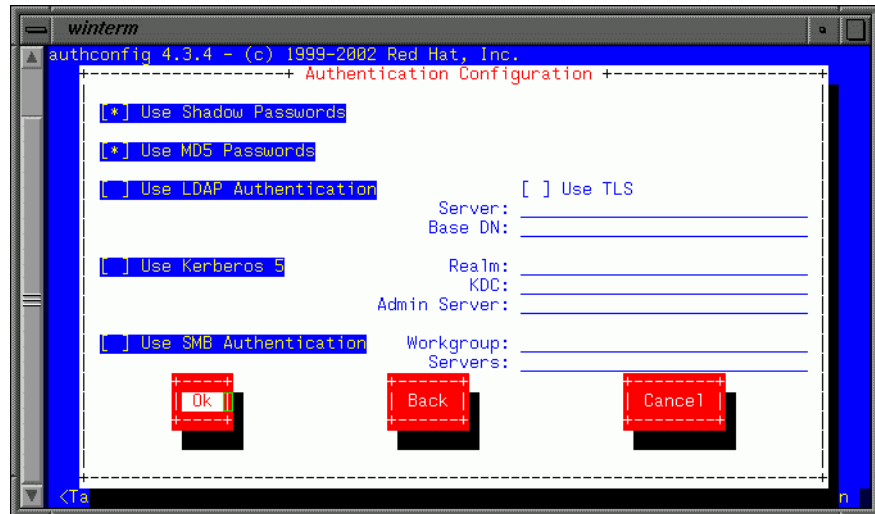


Figure 3-4 Authentication Configuration Screen (Second)

5. In the **Services** screen, use the default settings for services to be started automatically at SGIconsole boot-up. After you have reviewed the settings, click on **OK**.

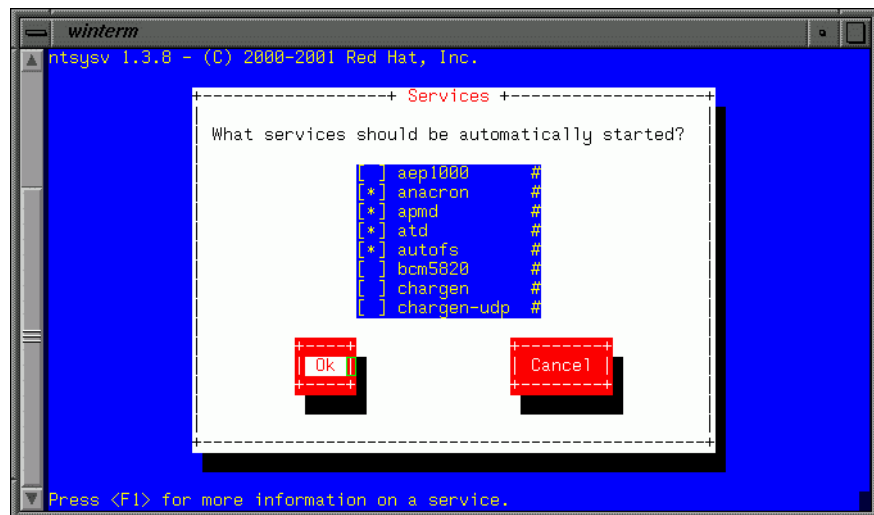


Figure 3-5 Services Screen

6. At this point the display should show the standard login prompt. Log in as `root` with your new password. The configuration of Red Hat Enterprise Linux ES 3.0 or WS 3.0 for use with SGIconsole is complete.

Installing SGIconsole 2.1

This describes how to install the SGIconsole 2.1 release.

Procedure 3-6 Installing SGIconsole 2.1

To install SGIconsole 2.1 software, follow these steps:

1. Log in as `root`.
2. Mount the SGIconsole 2.1 CD by executing the `mount` command as you have configured it. A common example is `mount /dev/cdrom /mnt/cdrom`.
3. Change directories to the root directory for the mounted CD. A common root directory is `/mnt/cdrom`.
4. Execute the command `./INSTALL`.

3: Getting Started

Output similar to the following appears:

```
[root@linux3 image]# /install/INSTALL
Installed: /install/SGI/RPMS/pcp-RPMCollection.txt (collection)
Installed: /install/SGI/RPMS/sysadm_base-RPMCollection.txt (collection)
Installed: /install/SGI/RPMS/vacm-RPMCollection.txt (collection)
Installed: /install/SGI/RPMS/digiOthers-1.2-1.noarch.rpm
Installed: /install/SGI/RPMS/j2re-1.4.1_02-fcs-linux.i586.rpm
Installed: /install/SGI/RPMS/SGIconsole-2.1-1.noarch.rpm
Installed: /install/SGI/RPMS/SGIconsole-docs-2.1-0.noarch.rpm
Installed: /install/SGI/RPMS/SGIconsole-extra-2.1-1.noarch.rpm
Installed: /install/SGI/RPMS/snxsc_firmware-1.20.6-1.i386.rpm
Installed: /install/SGI/RPMS/snxsc_l3-1.20.1-1.i386.rpm
Installed: /install/SGI/RPMS/sysadm_console-client-2.1-1.i386.rpm
Installed: /install/SGI/RPMS/sysadm_console-server-2.1-1.i386.rpm
Installed: /install/SGI/RPMS/sysadm_console-web-2.1-1.i386.rpm
Installed: /install/SGI/RPMS/vacm-l1-1.3-1.i386.rpm
Installed: /install/SGI/RPMS/vacm-l2-1.6-1.i386.rpm
Installed: /install/SGI/RPMS/vacm-legacy-3.4-1.i386.rpm
Installed: /install/SGI/RPMS/vacm-sco-1.2-1.i386.rpm
Installation has been completed. To check for errors, please examine
the log file:
```

```
/root/log/INSTALL.log
```

```
Examine the installation log now? [Y/n] n
```

```
Please run the script:
```

```
/usr/share/SGIconsole/bin/SGIconsole_startup
```

```
to set up your system if installation has completed successfully.
```

If you choose to view the install log from the script or using the cat command, information similar to the following appears:

```
root@linux2 init.d]# cat /root/log/INSTALL.log
Jun 10 17:45:19:INSTALL[2320]: INSTALL (SGIconsole 2.1) started
Jun 10 17:45:54:INSTALL[2320]: Installing: /install/SGI/RPMS/pcp-2.3.0-17.i386.rpm
/install/SGI/RPMS/pcp-pro-2.3.0-17.i386.rpm
Jun 10 17:46:09:INSTALL[2320]: Installing: /install/SGI/RPMS/sysadm_base-client-3.0-4.i386.rpm
/install/SGI/RPMS/sysadm_base-dev-3.0-4.i386.rpm /install/SGI/RPMS/sysadm_base-lib-3.0-4.i386.rpm
```

```

/install/SGI/RPMS/sysadm_base-mkrhinoism-3.0-4.i386.rpm
/install/SGI/RPMS/sysadm_base-tcpmux-3.0-4.i386.rpm
/install/SGI/RPMS/sysadm_base-server-3.0-4.i386.rpm
... [2320]: Adding /usr/lib/sysadm/lib to ld.so.conf
... [2320]: Added the following lines to /etc/ld.so.conf:
... [2320]: /usr/lib/sysadm/lib
... [2320]: (end of lines added to /etc/ld.so.conf)
... [2320]: Running ldconfig
... [2320]: Adding tcpmux to inetd.conf
... [2320]: Couldn't find inetd.conf in /etc /usr/etc /usr/local/etc
... [2320]: Restarting inetd
... [2320]: inetd: no process killed
... [2320]: Restarting xinetd with -HUP
... [2320]: Adding sysadmd to tcpmux.conf
Jun 10 17:46:14:INSTALL[2320]: Installing: /install/SGI/RPMS/
vacm-2.1.5a-3.i386.rpm
/install/SGI/RPMS/vacm-clientlib-2.1.5a-3.i386.rpm
/install/SGI/RPMS/vacm-devel-2.1.5a-3.i386.rpm /install/SGI/RPMS/vacm-hoover-2.1.5a-3.i386.rpm
/install/SGI/RPMS/vacm-node-2.1.5a-3.i386.rpm
/install/SGI/RPMS/vacm-sercon-2.1.5a-3.i386.rpm /install/SGI/RPMS/vacm-vash-2.1.5a-3.i386.rpm
Jun 10 17:46:15:INSTALL[2320]: Installing: /install/SGI/RPMS/digiOthers-1.2-1.noarch.rpm
Jun 10 17:46:58:INSTALL[2320]: Installing: /install/SGI/RPMS/j2re-1.4.1_02-fcs-linux.i586.rpm
Jun 10 17:47:01:INSTALL[2320]: Installing: /install/SGI/RPMS/SGIconsole-2.1-1.noarch.rpm
Jun 10 17:47:14:INSTALL[2320]: Installing: /install/SGI/RPMS/SGIconsole-docs-2.1-0.noarch.rpm
Jun 10 17:47:15:INSTALL[2320]: Installing: /install/SGI/RPMS/SGIconsole-extra-2.1-1.noarch.rpm
Jun 10 17:47:32:INSTALL[2320]: Installing: /install/SGI/RPMS/snxsc_firmware-1.20.6-1.i386.rpm
Jun 10 17:47:35:INSTALL[2320]: Installing: /install/SGI/RPMS/snxsc_l3-1.20.1-1.i386.rpm
Jun 10 17:47:36:INSTALL[2320]: Installing: /install/SGI/RPMS/sysadm_console-client-2.1-1.i386.rpm
Jun 10 17:47:38:INSTALL[2320]: Installing: /install/SGI/RPMS/sysadm_console-server-2.1-1.i386.rpm
Jun 10 17:47:38:INSTALL[2320]: Installing: /install/SGI/RPMS/sysadm_console-web-2.1-1.i386.rpm
Jun 10 17:47:39:INSTALL[2320]: Installing: /install/SGI/RPMS/vacm-l1-1.3-1.i386.rpm
Jun 10 17:47:40:INSTALL[2320]: Installing: /install/SGI/RPMS/vacm-l2-1.6-1.i386.rpm
Jun 10 17:47:41:INSTALL[2320]: Installing: /install/SGI/RPMS/vacm-legacy-3.4-1.i386.rpm
Jun 10 17:47:42:INSTALL[2320]: Installing: /install/SGI/RPMS/vacm-sco-1.2-1.i386.rpm
Jun 10 17:47:42:INSTALL[2320]: INSTALL (SGIconsole 2.1) completed
[root@linux2 init.d]#

```

At this point you have completed installing SGIconsole 2.1 software. To verify your installation run the following command to verify the software.

```
rpm -qa | egrep "SGIconsole|pcp|vacm|sysadm" | sort
```

If SGIconsole is correctly installed, the output from this command will list the SGIconsole, PCP, and SGIconsole software packages. Go to "Configuring SGIconsole 2.1" on page 32, for instructions on configuring SGIconsole software for use.

Configuring SGIconsole 2.1

This section describes how to configure SGIconsole 2.1.

Note: To configure the SGIconsole 2.1 software, you will need to have the following information for the L2 controller:

- name
- IP address
- netmask
- MAC address (see "Determining the Hardware Address of the L2 System Controller" on page 47)

For example:

`_bingo-12_, _10.2.2.1_, _255.255.255.0_, _10.2.2.255_, _00:a0:e7:21:c7:e3_`

Note: To configure the the EL-16 or EL-160 terminal server (also know as serial port servers), you need the following information:

- type
- ID
- Name
- IP address
- netmask
- MAC address

For example:

```
_EL-16_, _N0_, SCILAB-ELN0, 10.2.2.200, _255.255.255.0_, _10.2.2.255_, _00:a0:e7:21:d8:ff
```

The SGI EL-16 version 1.1 terminal server is the Digi EL-160. The original SGI EL-16 terminal server is the Digi EL-16 . The Ethernet port on the v1.1 is labeled 100base-t while the original EL-16 was labeled 10base-T.

Procedure 3-7 Configuring SGIconsole 2.1

To configure SGIconsole 2.1, begin by logging in as root and running the SGIconsole startup script:

```
/usr/share/SGIconsole/bin/SGIconsole_startup
```

The `sgiconsole_startup(8)` man page provides more information on the startup script.

- If you have not yet configured the Red Hat Enterprise Linux ES 3.0 or WS 3.0 release for use by SGIconsole, the following error message will be displayed on the system:

```
Error: You cannot run this startup script
because you have not
configured SGIconsole. To be guided through these steps, select
"y" which will reboot the system and run the configuration program.
```

```
Would you like to configure Linux for SGIconsole? [y/n]
```

Choose **y** to configure Linux immediately. (If you choose **n** the script will quit and you will not be able to configure SGIconsole software.) In this case, perform the following command as **root**

```
touch /.unconfigured
```

and then reboot the system.

- If you have already configured Red Hat Enterprise Linux ES 3.0 or Red Hat Enterprise Linux WS 3.0 for use with SGIconsole, then follow the startup script.

The SGIconsole startup script begins by displaying the following introduction, which lists the steps in configuring SGIconsole:

```
SGIconsole 2.1 Startup Process
```

```
This script will guide you through the
steps to configure SGIconsole 2.1 for use.
This script should be run on a
system that has Red Hat Linux Enterprise 3.0 WS or ES and
SGIconsole software installed.
```

```
This script will perform the following steps:
```

- 1) Define SGIconsole hostname.
- 2) Enable connection to serial port.
- 3) Configure eth1.
- 4) Start httpd.
- 5) Start VACM services.
- 6) Create console user 'root'.
- 7) Configure and upgrade EL-16 or EL-160 unit(s).
- 8) Configure DHCP services for L2 Controller(s).
- 9) Configure DHCP services for EL-16 or EL-160 unit(s).
- 10) Enable X11 Forwarding for ssh.
- 11) Improve system security.

```
Continue with the startup process? [y/n] y
```

Press Enter to be guided through the steps. The following list provides more information on the choices to be made.

1. Define SGIconsole hostname.

In order for SGIconsole software to communicate properly between the SGIconsole and the nodes you will be administering, you need to assign a hostname to the SGIconsole. For more information on hostnames, see the `hostname(1)` man page. This step places your input into the `/etc/sysconfig/network` file.

2. The startup script adds an entry to the `/etc/inittab` file to enable connection to a serial port on the SGIconsole server. The serial port speed default is 9600. The default terminal type for logging into SGI IRIX and Linux systems using SGIconsole is `vt100`.
3. Configure `eth1`.

SGIconsole comes with two Ethernet interfaces on the motherboard. The configuration steps assume `eth0` will be used for the public network, so you can access the SGIconsole from a remote system inside your firewall, and `eth1` will be used for the private network, to connect the SGIconsole to the machines it administers. This step places your input into the `/etc/sysconfig/network-scripts/ifcfg-eth1` file.

You will be prompted to define the IP address for `eth1`, as well as the netmask, broadcast address, and network address. In order to enable the included SGI system controller software, SGI recommends that you use IP Address 10.1.1.1, Netmask 255.0.0.0, Broadcast Address 10.255.255.255, and Network Address 10.0.0.0. These settings will enable the SGI system controller command `/stand/sysco/bin/l2find` to locate new L2 controllers as they are added to the `eth1` network and enable the `/stand/sysco/bin/l2term` command to connect to new L2 controllers. For example, your entries might look like the following:

```
eth1 IP Address (e.g. 130.23.65.10): 10.1.1.1
eth1 Netmask (default 255.255.255.0): 255.0.0.0
eth1 Broadcast Address (default 10.1.1.255): 10.255.255.255
eth1 Network Address (default 10.1.1.0): 10.0.0.0
```

The information for the `eth1` device is stored in the `/etc/sysconfig/network-scripts/ifcfg-eth1` file, as follows:

```
DEVICE=eth1
BOOTPROTO=static
BROADCAST=10.255.255.255
IPADDR=10.1.1.1
NETMASK=255.0.0.0
NETWORK=10.0.0.0
```

```
ONBOOT=yes
```

The `SGIconsole_startup` script then brings up the `eth1` interface.

After bringing up the `eth1` device with these settings, you can use the System Controller command `/stand/sysco/bin/l2find` to find new L2 controllers when added to the `eth1` subnet.

4. Because the `SGIconsole` main interface and `PCP` interface are web-based, the script enables the web server (`httpd`) on the `SGIconsole`. (**No input is needed.**)
5. The startup script starts the `vacm` and `vacm-mode` services. (**No input is needed.**)
6. To enable `SGIconsole` software to function properly, the startup script creates a console user `root` password file. (**No input is needed.**)
7. Configure EL-16 or EL-160 units

Note: When looking at EL-16 hardware, if it says EL-16 ver 1.1, you need to configure it as a EL-160 unit, or you will not boot the RealPort software or communicate through it. You can verify hardware by using the `rlogin` command to the EL-16, as follows:

```
[root@linux2 root]# rlogin el-16
```

```
EL-16 RealPort Server - US Patent No. 6,047,319
\_____+note: RealPort
```

If the EL-16 reports back Realport software, you know your configuration is correct.

If you manage a server that requires serial console access using EtherLite serial port server devices, the firmware for these devices must be upgraded to RealPort for use with `SGIconsole`. In order to do this, DHCP and BOOTP are used to perform the upgrade.

Choose **y** if you have a server that you want to manage using Etherlite serial port server devices.

The `SGIconsole_startup` script builds and installs the Digi RealPort software.

Note: If the build/install operation fails, the system might not have been installed properly. Use the provided kickstart floppy image to clean install the system with required rpms as described in "Installing Red Hat Enterprise Linux ES 3.0 or WS 3.0 Release" on page 21.

This step is to set up the SGIconsole system to upgrade the firmware of the EtherLite units and to configure the upgraded EtherLite units for use with DHCP. If you skip this step, you will have to store an IP address in the unit, and it is assumed that the unit has already been upgraded to RealPort.

Chose **y** to configure and upgrade your EtherLite devices.

Choose **y** to add more units.

Note: The 2-character unit ID below is used by the Digi RealPort driver to identify the device in the `/etc/dgrp.backing.store` configuration files and the files in the `/proc/dgrp` directory. The TTY devices created for each Etherlite also contain the unit ID. For instance, entering a unit ID of "aa" will mean the Etherlite device identity will be "aa" and its TTY devices will be `tyaa00` through `tyaa15`. For more information, see the `dgrp_cfg_node(8)` man page.

The 2-character unit ID field is case sensitive such that whatever you enter here will affect the tty that is used when configuring a node. This is because when you configure a node there is a default response of `"/dev/ttyN001"` provided in the definition window.

The following is an example of upgrading firmware and configuring two Digi EL-16 serial port servers as prompted by the `SGIconsole_startup` script:

```
Please enter: 2-character unit ID: N0
              IP address: 192.12.1.20
              EL-x unit type [16,160]: 16
```

Add another unit definition or press the Enter key to continue.

```
Please enter: 2-character unit ID: N1
              IP address: 192.12.1.21
              EL-x unit type [16,160]: 16
```

Add another unit definition or press the Enter key to continue.

3: Getting Started

Please enter: 2-character unit ID:

Using /usr/bin/dgrp/dgrp.o
Chkconfig dgrp_daemon on...

You will be prompted for information regarding the network in which DHCP needs to provide services to.
Press the Enter key to use the default value.

Subnet Address (default 10.0.0.0):
Netmask (default 255.0.0.0):
Broadcast Address (default 10.255.255.255):

For the EtherLite unit with IP address 192.12.1.20, please specify:
Hostname: el-16
MAC Address (e.g. 00:a0:e7:aa:11:bb): 00:a0:e7:21:88:f9

Adding host to /etc/hosts file...

Adding 192.12.1.20 to routing table...

For the EtherLite unit with IP address 192.12.1.21, please specify:
Hostname: el-16-2
MAC Address (e.g. 00:a0:e7:aa:11:bb): 00:a0:e7:21:c7:e3

Adding host to /etc/hosts file...

Adding 192.12.1.21 to routing table...

The /etc/dhcpd.conf file is created.

Restarting xinetd and dhcpd...
Stopping xinetd: [OK]
Starting xinetd: [OK]
Chkconfig dhcpd on...

Starting dhcpd services on eth1...

Shutting down dhcpd: [FAILED]
Starting dhcpd: [OK]

Upgrading firmware to any EtherLite units that are restarting...

IMPORTANT:

=====

If your EtherLite units do not have RealPort firmware installed, now is the time to install it! It is required that all EtherLite Serial Port Server devices be upgraded to use RealPort firmware, since SGIconsole uses RealPort drivers which are incompatible with older EtherLite firmware.

To perform an upgrade to any EtherLite units you plan to use with SGIconsole, you MUST connect them to a network via /dev/eth1 and power cycle the units NOW to update their firmware. Only EtherLite units which are restarted will have their firmware overwritten.

It is suggested that you remove power from the EtherLite unit by unplugging the power cord, waiting 10 seconds, and then re-applying power to the unit. The EtherLite unit will then reinitialize itself, and the LEDs will flicker quickly while the firmware upgrade progresses.

*** DO NOT DISCONNECT POWER TO AN ETHERLITE UNIT WHILE A FIRMWARE UPGRADE IS IN PROGRESS OR THE UNIT WILL BE DAMAGED.

Wait a few seconds until the LEDs on the EtherLite unit stop flashing (the LEDs should remain lit). After you have power-cycled the EtherLite devices you want upgraded, press the Enter key to continue...

Restarting xinetd again and shutting down dhcp...

```
Stopping xinetd: [ OK ]
Starting xinetd: [ OK ]
Starting dgrp_daemon...
```

```
Starting DGRP daemons:
  Daemon for id "N0" (192.12.1.20): started.
  Daemon for id "N1" (192.12.1.21): started.
```

Note: The tty devices for example unit with id "N0" are ttyN000 to ttyN015.
The tty devices for example unit with id "N1" are ttyN100 to ttyN115.

8. Configure DHCP service for L2.

If you have an SGI Origin 3000 series server, an SGI Altix 3000 server or supercluster, a larger SGI Altix 350 system, or an SGI Onyx 3000 graphics system, you will need an L2 system controller to administer it using SGIconsole. This step sets up one or more L2 system controllers for use with SGIconsole, placing your input into the `/etc/dhcpd.conf` and the `/etc/hosts` files, and into the routing table. For more information on `dhcpd` and `route`, see the `dhcpd(8)` and `route(1M)` man pages.

You will be prompted to enter for each L2 system controller a hostname, Ethernet (MAC) address, and fixed IP address. To determine the hardware address of the L2 system controller, see "Determining the Hardware Address of the L2 System Controller" on page 47.

9. Configure DHCP for EL-16 or EL-160 units.

If you have an SGI Origin 200 server, an SGI Origin 2000 series server, an SGI Origin 300 server, or SGI Altix 350 system, SGI Altix 3000 server or supercluster, or SGI Origin 3000 series server, or a Silicon Graphics Onyx 300 or Onyx 3000 graphics system, you will need a Silicon Graphics Ethernet serial port server (EL-16 or EL-160) to administer it using SGIconsole. This step sets up one or more Silicon Graphics Ethernet serial port servers for use with SGIconsole, placing your input into the `/etc/dhcpd.conf` and `/etc/hosts` files, and into the routing table. For more information on `dhcpd` and `route`, see the `dhcpd(8)` and `route(1M)` man pages.

You will be prompted to enter for each Silicon Graphics Ethernet serial port server a hostname, Ethernet (MAC) address, and fixed IP address.

Note: At this point, the script will start up DHCP services on the private network `eth1`.

The following information describes the SGIconsole as a DHCP server with one or more L2 system controllers, SGIconsole as a DHCP server with a Silicon Graphics Ethernet serial port server (EL-16 or EL-160), or SGIconsole as a DHCP server with both L2 system controllers and a Silicon Graphics Ethernet serial port server.

- Configure SGIconsole as a DHCP server.

This step places your input into the `/etc/dhcpd.conf` file, which the startup script will create for you, and creates the `/var/state/dhcp/dhcpd.leases` file. For more information on `dhcpd`, see the `dhcpd(8)` man page.

DHCP can enable SGIconsole to be more flexible in the event of a power cycle, because the Silicon Graphics Ethernet serial port server (EL-16) will be able to reacquire its IP address from the SGIconsole. Alternately, using a static IP can allow SGIconsole to be more secure for those environments concerned about security. The startup script assumes you want to use DHCP; if you prefer to use a static IP, please follow the instructions in the `README.txt` file.

You will be prompted to enter the SGIconsole subnet address, netmask, broadcast address, and default lease time.

- See steps 7 and 8

10. Enable X11 Forwarding for `ssh`

The `ssh` (SSH client) is a program for logging into a remote machine and for executing commands on a remote machine. It replaces `rlogin` and `rsh` and provides secure encrypted communications between two untrusted hosts over an insecure network. X11 connections and arbitrary TCP/IP ports can also be forwarded over the secure channel.

11. Improve system security.

SGIconsole 2.1 startup script helps you improve security on your SGIconsole system. It disables services via `chkconfig(8)` command. These actions address common concerns but are not intended to eliminate all security risks. The SGIconsole system and the machine to which it displays windows, should be located behind a secure firewall.

12. Update SGIconsole group database (if it exists). **(No input is needed.)**

This step performs a maintenance upgrade on the groups database of older SGIconsole (1.x) installations.

13. Install periodic tasks. **(No input is needed.)**

This step installs `cron(1)` tasks for root in relation to console logging cleanup and rotation.

When the script has completed successfully, ensure that the host where applications will be displayed has access control disabled. You may have to modify the proxy settings of your Web browser to access the Internet. After running the SGIconsole 2.1 startup script, the only connection methods enabled are `ssh(1)` and `telnet(1)`.

At this point SGIconsole software should be configured and ready to use (refer to "Using SGIconsole").

Restoring SGIconsole 1.1 or 2.0 Data

At this point you should have used a kickstart image to install the Red Hat Enterprise Linux ES 3.0 or WS 3.0 release and configured the system using `netconfig`, `authconfig`, and so on as prompted. Run through `SGIconsole_startup` script making sure to setup the SGI 1100 server as the `dhcp-server` on the `eth1` subnet, build and install the Digi realport driver, upgrade the Digi EL-16 devices to realport firmware, and configure and start the realport driver, `dgrp_daemon` for each Digi EL-16.

Procedure 3-8 Restoring SGIconsole 1.1 or 2.0 Data

To restore the SGIconsole 1.1 or 2.0 data, perform the following steps:

1. Insert the floppy with the SGIconsole 1.1 backup data and issue the mount command, as follows:

```
[root@linux3 sysadm]# mount /dev/fd0
```

2. Add the console group to the `/etc/group` file and ensure that the group ID is 60000, as follows:

Note: The group ID changed from 31 in SGIconsole 1.1 to 60000 in SGIconsole 2.0 and 2.1.

```
[root@linux3 sysadm]# cp /etc/group /etc/group.O
```

```
[root@linux3 sysadm]# echo "console:x:60000:" >> /etc/group
```

3. Restore the `sysadm` privileged user file, as follows:

```
[root@linux3 sysadm]# cp /var/lib/sysadm/privilegedUsers /var/lib/sysadm/privilegedUsers.O
```

```
[root@linux3 sysadm]# cp /mnt/floppy/privilegedUsers /var/lib/sysadm/privilegedUsers
```

4. Restore VACM configuration file, as follows:

```
[root@linux3 sysadm]# cp /usr/lib/vacm/vacm_configuration /usr/lib/vacm/config.O
```

```
[root@linux3 sysadm]# cp /mnt/floppy/vacm_configuration /usr/lib/vacm/vacm_configuration
```

5. Restore the SGIconsole data directory, as follows:

```
[root@linux3 sysadm]# cp -R /var/lib/SGIconsole /var/lib/SGIconsole.O
```



```
[root@linux3 sysadm]# cp -R /mnt/floppy/SGIconsole/ /var/lib
```

If the `/etc/sgiconsole.conf` file exists and it contains the following line, comment out or remove the line and save the changes back to the `sgiconsole.conf` file:

```
nogroupdbfix
```

Restart the SGIconsole software by executing as root:

```
[root@linux3 sysadm]# /etc/init.d/sgiconsole restart
```

Note: Commenting out the `nogroupdbfix` directive in the `/etc/sgiconsole.conf` file enables SGIconsole to rescan the groups database at `/var/lib/SGIconsole/groups` and apply the necessary fixes to the database for SGIconsole 2.1 when SGIconsole is restarted, either by the method above or by using the **Reset SGIconsole Software** command in Console Manager.

The `/etc/sgiconsole.conf` file will be edited or recreated to restore the `nogroupdbfix` directive after the scan has been applied to the groups database.

6. Restore user data and create a user for each user that was local to the system (except root), as follows:
 - a. Compare the users listed in the restored SGIconsole directory with the contents of the saved `passwd` file from SGIconsole 1.1 or 2.0. Then add the information of local users to the system `passwd` file (with new console group ID 60000).

- b. List the users, as follows:

```
[root@linux3 sysadm]# ls /var/lib/SGIconsole/users
nisuser  root  testuser
```

- c. Save copy of the current system `passwd` file, as follows:

```
root@linux3 sysadm]# cp /etc/passwd /etc/passwd.0
```

- d. Check for each user except root in the saved `passwd` file.

NIS users do **not** appear in the `passwd` file. If you check for a NIS user, as in the following example, nothing is returned:

```
[root@linux3 sysadm]# cat /mnt/floppy/passwd | grep nisuser
```

An example of local user in saved passwd file is, as follows:

```
[root@linux3 backup]# cat /mnt/floppy/passwd | grep testuser
testuser:x:54580:31:::/home/testuser:/bin/bash
```

- e. Add the local user to passwd file with new group ID 60000, as follows:

```
[root@linux3 backup]# echo "testuser:x:54580:60000:::/home/testuser:
/bin/bash" >> /etc/passwd
```

Repeat the checks and add steps for remaining users.

- f. If shadow password file was saved from SGIconsole 1.1 or 2.0, you must also check and add user information from the saved shadow password file. You can save a copy of current shadow password file, as follows:

```
[root@linux3 backup]# cp /etc/shadow /etc/shadow.0
```

- g. Check for each user except root in the saved shadow password file, as follows:

```
[root@linux3 backup]# cat /mnt/floppy/shadow | grep testuser
testuser:xWMVKkegTeXxg:12209:0:99999:7:::
```

- h. Add user data to the shadow password file of the current system, as follows:

i.

```
[root@linux3 backup]# echo "testuser:xWMVKkegTeXxg:12209:0:99999:7:::"
>> /etc/shadow
```

- ii. Create a home directory for each local user, as follows:

```
[root@linux3 backup]# mkdir /home/testuser
```

- iii. Copy default files, as follows:

```
[root@linux3 backup]# cp /etc/skel/* /home/testuser
```

- iv. Create .telnetrc file in the home directory each user. Open file in an editor, as follows:

```
[root@linux3 backup]# vi /home/testuser/.telnetrc
```

Cut and paste the following contents into the file:

```
# automatically generated by SGIconsole
# do not edit
localhost
    set crlf off
    mode character
```

- v. Open the `.bash_profile` file of each user and add content to launch SGIconsole text-based interface `tscm` on user login, as follows:

```
[root@linux3 backup]# vi /home/testuser/.bash_profile
```

Cut and paste the following contents to the end of the file:

```
# Automatically run the text-based interface to SGIconsole
if [ -x /usr/bin/tscm ]
then
    echo ""
    echo "Automatically starting SGIconsole (to get to a shell,"
    echo "enter 6 at the command line prompt)."
    sleep 5
    clear
    /usr/bin/tscm
    exit
fi
# (... end support for text-based interface to SGIconsole)
```

- vi. Change ownership and mode of user files, as follows:

```
[root@linux3 backup]# chown -R testuser:console /home/testuser
[root@linux3 backup]# chmod 700 /home/testuser
```

7. Perform the following steps to map TTY device names from Digi Etherlite to RealPort driver:
 - a. SGIconsole 1.1 supported up to two Digi EL-16 or EL-160 Etherlite serial port servers. The TTY device names created and used by the Digi driver have changed. Node data for systems with serial port connections must be updated with the new TTY device names.

Note: The Digi RealPort driver should have been built and installed and the firmware of the Etherlite devices upgraded in step 7 of the `SGIconsole_startup` script described in Procedure 3-7, page 33. Further information on upgrading the firmware is available in "Replacing EtherLite Firmware with Realport Firmware".

Use the `cat(1)` command to compare the saved Digi Etherlite driver configuration data with the Digi RealPort configuration data.

An example of saved Digi Etherlite driver configuration is, as follows:

```
[root@linux3 /root]# cat /mnt/floppy/els.conf
#elsnn EL-type IP-address options( e.g. -t 600)
els0 EL-16 192.12.1.20 -t=120
els1 EL-16 192.12.1.21 -t=120
```

An example of Digi RealPort driver configuration data, is as follows:

```
[root@linux3 /root]# cat /etc/dgrp.backing.store
# Format:
#
# ID IP PortCount SpeedString IPPort Mode Owner Group
#
# If any of the last five options should use the default, the
# string "default" appears instead.
#
N0 192.12.1.20 16 auto default default default default
N1 192.12.1.21 16 auto default default default default
```

The following table maps the TTY device names for the unit named `els0` in the `els.conf` file and `N0` in the `dgrp.backing.store` file with the common address `192.12.1.20`.

Note: The RealPort TTY device names contain the unit ID. In this example, the RealPort unit ID is `N0`. The corresponding TTY device names are `TTY N0 00` to `TTY N0 15`. The device names might be different for your configuration based on the unit IDs you see in your `dgrp.backing.store` file.)

Devices are `/dev/tty****`

```
els0:N000,N001,N002,N003,N004,N005,N006,N007,N008,N009,N00a,N00b,N00c,N00d,N00e,N00f
N0:  N000,N001,N002,N003,N004,N005,N006,N007,N008,N009,N010,N011,N012,N013,N014,N015
```

The following table maps the TTY device names for the unit named `els1` in the `els.conf` file and `N1` in the `dgrp.backing.store` file with the common address `192.12.1.21`, as follows:

```
els1:N010,N011,N012,N013,N014,N015,N016,N017,N018,N019,N01a,N01b,N01c,N01d,N01e,N01f
N1:  N100,N101,N102,N103,N104,N105,N106,N107,N108,N109,N110,N111,N112,N113,N114,N115
```

- b. Launch the Console Manager application and login as the root user.
- c. Select each serial attached node in the **Nodes View** and launch the **Modify a Node Configuration** task from the **Node Tasks** pull-down menu.
- d. Change the TTY device name(s) for the node from the Etherlite TTY device name to the RealPort TTY device name.

Determining the Hardware Address of the L2 System Controller

This section describes how the L2 system controllers come online after a system boots and how to set the `eth1` port on the SGI 1100 server to match when a DHCPD server is running on a subnet.

Procedure 3-9 Determining the Hardware Address of the L2 System Controller

1. SGI systems with L2 system controllers should be connected to the second Ethernet port (`eth1`) on the SGIconsole system. If connected directly it should be connected via a crossover cable. To ensure the L2 system controller is correctly installed, see the *SGIconsole Hardware Connectivity Guide*.

The SGIconsole system should be running the DHCP server for the `eth1` subnet. A `DHCPREQUEST` message for the L2 with its current IP address and media access control (MAC) address should appear in the `/var/log/messages` system log on the SGIconsole system. However, SGIconsole will not serve an address to the request by default.



Warning: If the L2 controller fails to receive an IP address from a DHCP request, it will start a dhcp server by default and give itself an address. This dhcp server will compete with the server running on the SGIconsole system and it can consequently serve an unknown address to other L2 controllers and Digi Etherlite units on the same subnet. A new L2 controller installed on the eth1 subnet should not be left unconfigured in /etc/dhcpd.conf file on the SGIconsole system.

The L2 system controller will broadcast a request for an IP address on power up.

- a. Before connecting a new L2 controller to the private subnet off eth1 on the SGIconsole system open a shell and tail the system log, as follows:

```
tail -f /var/log/messages
```

- b. Patch the L2 controller to the private subnet and power cycle it.
- c. Create a host entry in the /etc/dhcpd.conf file for the L2 controller using the MAC address from the messages log. For example,

```
# Device information
host dino-12 {
    hardware ethernet 08:00:69:11:81:18;
    fixed-address 192.12.1.10;
}
```

- d. Restart the dhcpd(8) daemon, as follows:

```
# /etc/rc.d/init.d/dhcpd stop

# /etc/rc.d/init.d/dhcpd start
```

- e. Add an entry for the L2controller in the /etc/hosts file, as follows:

```
# echo "192.12.1.10 dino-12" >> /etc/hosts
```

- f. Add a route to the L2 controller, as follows:

```
# route add 192.12.1.10 eth1
```

- g. Power cycle the L2 controller and watch the system log (`/var/log/messages`) for a `dhcp` message confirming the L2 controller has loaded the new address
- h. Use the `telnet` command to connect to the L2 controller and disable the `dhcpserver`, as follows:

```
root@linux2 init.d]# telnet dino-12
Trying 192.12.1.10...
Connected to dino-12.
Escape character is '^]'.

Linux 2.4.7-sgil2 (192.12.1.10) (ttyp0)
```

SGI SN1 L2 Controller

```
INFO: connection established to localhost, to quit enter
dino-001-L2>dhcpserver disable
DHCP server startup DISABLED (this L2 will never start a DHCP server).
```

- i. If more than one system with an L2 is on the same subnet, the L2 parameter `multisys` will need to be enabled. Use the `telnet` command to telnet to the the new L2 and, at the `L2>` prompt, enter the command `msys on`. Use `help multisys` at the `L2>` prompt for more information.
2. The SGI system controller `l2find` command can be used to find L2 controllers when troubleshooting your system. The `eth1` interface on the SGIconsole system needs the following settings in `/etc/sysconfig/network-scripts/ifcfg-eth1` file to enable it:

```
DEVICE=eth1
BOOTPROTO=static
BROADCAST=10.255.255.255
IPADDR=10.2.2.1
NETMASK=255.0.0.0
NETWORK=10.0.0.0
ONBOOT=yes
```

3. Reboot the SGI 1100 server or stop and start your network using the following commands:

```
[root@console-dino /root] # /etc/rc.d/init.d/network stop
```

and

```
[root@console-dino /root] # /etc/rc.d/init.d/network start
```

4. To find the IP address of the L2 system controller, perform the following:

```
[root@console-dino /root]# /stand/sysco/bin/l2find eth1
```

Output similar to the following appears:

1 L2's discovered:

IP	SSN	NAME	RACK FIRMWARE
10.17.177.24			000 1.2.0

5. Use the `l2term` command to connect to the L2 controller and find the MAC address needed for `dhcpd.conf` file and the `SGIconsole_startup` script, as follows:

```
[root@console-dino /etc]# /stand/sysco/bin/l2term --l2 10.17.177.24
```

Output similar to the following appears:

```
INFO: connection established to 10.17.177.24, to quit enter
10.17.177.24-L2>
10.17.177.24-L2>! ifconfig
eth0      Link encap:Ethernet  HWaddr 08:00:69:11:B1:18 <---needed
by SGIconsole_startup for /etc/dhcpd.conf.

      inet addr:10.17.177.24  Bcast:10.255.255.255  Mask:255.0.0.0
      UP BROADCAST RUNNING MULTICAST  MTU:1500  Metric:1
      RX packets:98 errors:0 dropped:0 overruns:0 frame:0
      TX packets:56 errors:56 dropped:0 overruns:0 carrier:0
      collisions:0 txqueuelen:100
      Base address:0xe00

lo       Link encap:Local Loopback
      inet addr:127.0.0.1  Mask:255.0.0.0
      UP LOOPBACK RUNNING  MTU:3924  Metric:1
      RX packets:63 errors:0 dropped:0 overruns:0 frame:0
      TX packets:63 errors:0 dropped:0 overruns:0 carrier:0
      collisions:0 txqueuelen:0
```


10.17.177.24-L2>

6. Use the hardware address (HWaddr 08:00:69:11:B1:18) in the `dhcpd.conf` file and the `SGIconsole_startup` script.
7. Once DHCP is configured and restarted or after the `SGIconsole_startup` script has completed, the L2 system controllers need to be power cycled so they pick up their new addresses from the SGI 1100 server.

Using SGIconsole

The main SGIconsole window provides access to the ConsoleManager and PCP tools, and to documentation about these and other SGIconsole components.

To start using SGIconsole, enter the following URL into a Web browser on a local or remote machine to bring up the SGIconsole main Web page. Replace *SGIconsole-hostname* with the name of your SGIconsole host:

`http://SGIconsole-hostname`

The SGIconsole main window is shown in Figure 3-6.

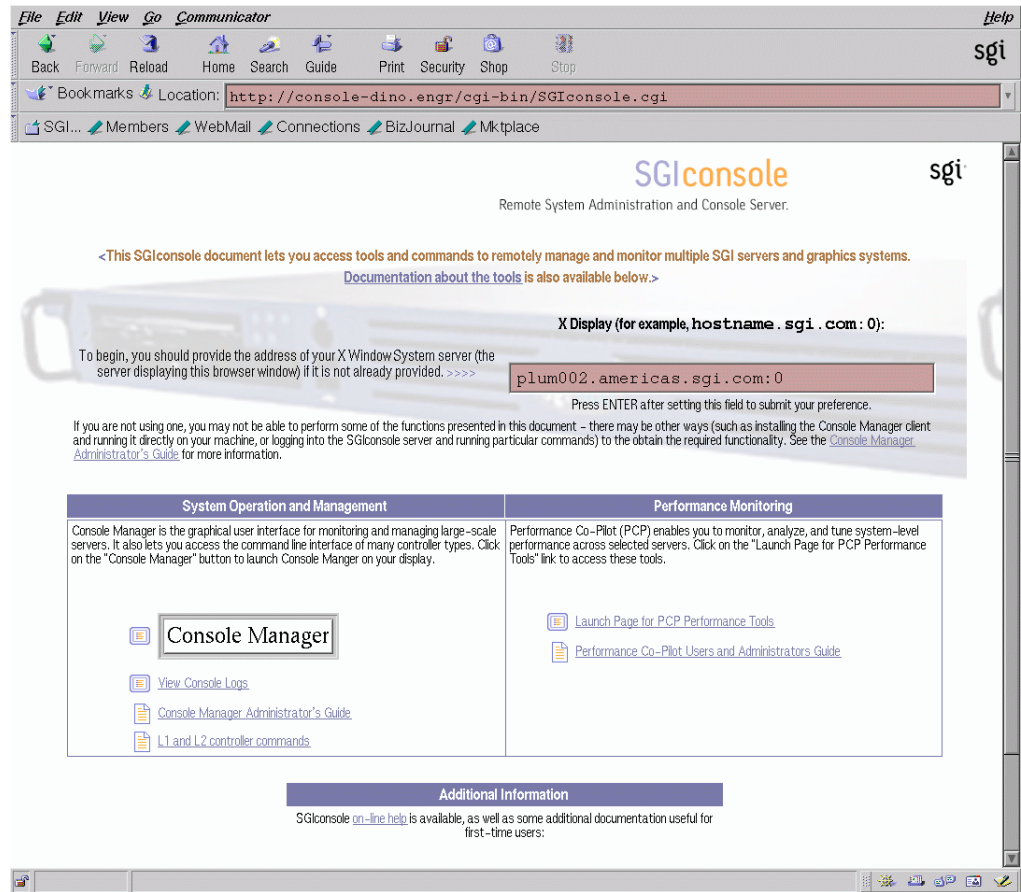


Figure 3-6 SGIconsole Main Window

To activate a specific tool or command, click on the (specific) link or button. To access documentation, click on the specific title.

If there is no response to clicking on a link, check the following items:

- The access control of the display host may be disallowing application windows to display on your machine. To allow any host to display windows on your machine, enter the following command:

```
xhost +
```

To allow only the host that you specify to display windows on your machine, enter the following command:

```
xhost + hostname
```

- Your Web browser proxy setting may not be updated to access the Internet. Check your browser's proxy settings.
- You may not have set the "Name of host where tools will display" entry field to your local host. Check the entry field and ensure that the host name is correct.
- You may have iconified the browser or the application window from a previous access. Restore the browser or window to its normal size.

Changing the Appearance of your X terminal

X terminal windows are provided for the system console. You can change the appearance as follows:

- You can change it on the fly by `<ctrl> <right mouse>` to get the font-size menu.
- You can change it globally with X resources. Add the following to the `~/.Xresources` file:

```
XTerm*font:  
*-lucidatypewriter-medium-r-normal--10--100-100--*--*--*
```

- In other applications, where you can invoke `xterm` with the `-name name` option, you can specify it as follows:

```
remxterm*font:  
*-lucidatypewriter-medium-r-normal--10--100-100--*--iso8859-1
```

and then start the Xterminal as `xterm -name remxterm`.

Setting up and Using the Console Manager Client on Client Machines

This section describes the procedures for installing software to allow you to use Console Manager directly on your client machine.

1. Check that you have Java2 installed on your machine.

For IRIX users, use the `showprods(1)` command to check that you have Java 2 installed as follows:

```
% showprods java2\*
```

Output similar to the following appears:

I = Installed, R = Removed

Name	Date	Description
I java2_eoe	05/13/2003	Java2 v1.4.1 Execution Environment (Sun JRE v1.4.1)
I java2_eoe.man	05/13/2003	Java Runtime System Documentation
I java2_eoe.man.base	05/13/2003	Java Runtime System Man Pages
I java2_eoe.man.relnotes	05/13/2003	Java Runtime System Release Notes
I java2_eoe.man.webdocs	05/13/2003	Java Documentation (HTML)
I java2_eoe.sw	05/13/2003	Java Runtime System Software
I java2_eoe.sw.base	05/13/2003	Java Runtime System Software (Required)
I java2_eoe.sw32	05/13/2003	Java n32 Runtime System Software
I java2_eoe.sw32.binaries	05/13/2003	Java n32 Runtime Software (Required)

For Red Hat Enterprise Linux ES 3.0 or WS 3.0 users, check that you have Sun's Java2 runtime installed as follows:

```
[root@linux1 root]# rpm -qa | grep j2re
```

Output similar to the following appears:

```
j2re-1.4.1_02-fcs
```

For Windows 98, NT 4.0, NT 2000, and XP users, open the **Add/Remove Software** control panel and check if Java 2 Runtime Environment, SE v1.4.1_02 appears in the list of programs installed.

If you have the JDK installed instead of the JRE, this is also suitable for running Console Manager.

2. The required Java2 runtime environments are included on the SGIconsole CD at the following locations:

```
IRIX          images/ConsoleManager-  
              Client/6.5_java2_eoe_1.4.1.tardist
```

Windows images/ConsoleManager-Client/j2re-1_4_1_02-windows-i586.exe

Linux SGI/RPMS/j2re-1.4.1_02-fcs-linux.i586.rpm

You can also make these Java2 runtime environment images available to users by creating a directory and copying them to that directory in the Apache webserver document root, as follows:

```
# mkdir /var/www/html/java2
# cp /mnt/cdrom/images/ConsoleManager-Client/6.5_java2_eoe_1.4.1.tardist /var/www/html/java2/
# cp /mnt/cdrom/images/ConsoleManager-Client/j2re-1_4_1_02-windows-i586.exe /var/www/html/java2/
# cp /mnt/cdrom/SGI/RPMS/j2re-1.4.1_02-fcs-linux.i586.rpm /var/www/html/java2
```

Users can then download and install these images from <http://hostname/java2>

For information on installing software packages on your Linux or IRIX system, see `rpm(1)` or `inst(1)`, respectively. For Windows users, all that is required is to run the executable file and follow the on-screen instructions.

3. SGIconsole 2.1 client software can be downloaded from the main SGIconsole webpage under **System Operation and Management** menu.

Download the software to a directory of your choice and uncompress the file using one of the following commands:

- For IRIX, use `/usr/freeware/bin/unzip` from <http://freeware.sgi.com>
- For Linux, use the `unzip(1)` command.
- For Windows, Winzip is recommended from <http://www.winzip.com>

4. To run the client open the directory where the files were uncompressed to.
5. For IRIX and Linux systems, run the following command:

```
% ./cmgr
```

For Windows systems, run batch file `CMGR`.

Additional Miscellaneous Information about SGIconsole 2.1 Release

Using the PROM Command Monitor

This section describes the command (PROM) monitor programs, which control the boot environment for all SGI workstations and servers running the IRIX operating system. With the command monitor, you can boot and operate the CPU under controlled conditions, run the CPU in command monitor mode, and load programs (for example, the operating system kernel, `/unix`, or special debugging and execution versions of the kernel). For detailed information on the PROM monitor, see the `prom(1M)` man page and Chapter 9, "Using the Command (PROM) Monitor" in *IRIX Admin: System Configuration and Operation*.

For SGI servers, the installed PROM default variables are correct for use with SGIconsole. For SGI desktop systems, if no keyboard is plugged in when the system is powered on (or reboot on machines), then the PROM uses the first serial port for I/O.

Procedure A-1 Using the PROM Command Monitor

You can force the correct behavior for all SGI desktop, servers, and visualization systems as follows:

1. Set the PROM variable `console` to `d`. This can be done two ways:
 - a. From the PROM monitor prompt, perform the following:

```
setenv console d
```
 - b. From the IRIX operating system, as root user perform the following:

```
nvrnm console d
```
2. Return the `alt console` line in `/etc/inittab` file to the originally installed value (if different) as follows:

```
t1:23:respawn:/sbin/suattr -C CAP_FOWNER,CAP_DEVICE_MGT,  
CAP_DAC_WRITE+ip -c "exec /sbin/getty ttyd1 console"
```

The `:23:` variable can be different on your machine if you have created more run levels for site purposes. The `alt console` variable for the `getty(1M)` process must be enabled on all stable run levels (not on single-user (s) or on the transition run

levels: 0, 1, or 6. Single-user has a shell on the console. If you add another shell, configuring systems to run with SGIconsole will be more difficult.

Replacing EtherLite Firmware with Realport Firmware

SGIconsole uses Digi Realport firmware. You must download the correct Realport firmware from the console server which is the machine where you installed SGIconsole 2.1 to your multiplexer.

Procedure A-2 Replacing EtherLite Firmware with Realport Firmware

Perform the following steps:

1. Download the latest Digi RealPort firmware for EL-16 or EL-160 at this location, as follows:<http://support.digi.com/support/drivers/linux/index-stsels.html>

An example filename for EL-16 is 80007008_B.bin.

2. Copy the firmware to /tftpboot.
3. Add entries to the /etc/hosts file for each device similar to the following example:

```
192.12.1.20    el-16.engr.sgi.com    el-16
192.12.1.21    el-16-2.engr.sgi.com  el-16-2
```

4. Add routes for each device using the route(8) command similar to the following:

```
route add 192.12.1.20 eth1
```

Use the route command to check your work, as follows:

```
[root@linux2 root]# route
Kernel IP routing table
Destination      Gateway          Genmask         Flags Metric Ref    Use Iface
el-16-2.engr.sg *                255.255.255.255 UH    0      0      0 eth1
el-16.engr.sgi. *                255.255.255.255 UH    0      0      0 eth1
dino-l2.engr.sg *                255.255.255.255 UH    0      0      0 eth1
192.12.1.40      *                255.255.255.255 UH    0      0      0 eth1
192.12.1.30      *                255.255.255.255 UH    0      0      0 eth1
130.62.33.0     *                255.255.255.0   U      0      0      0 eth0
192.12.1.0       *                255.255.255.0   U      0      0      0 eth1
169.254.0.0     *                255.255.0.0     U      0      0      0 eth1
```



```

127.0.0.0      *                255.0.0.0      U    0    0    0 lo
default      b43-11-hsrp-33. 0.0.0.0      UG   0    0    0 eth0

```

5. Edit the `/etc/dhcpd.conf` file and add an entry for the Digi device that includes hardware ethernet (MAC) address, fixed-address, and filename of the firmware.

An example `dhcpd.conf` file with two EL-16s defined is, as follows:

```
# Created by SGIconsole_startup. Do not remove this line.
```

```

# Define subnet
ddns-update-style ad-hoc;

subnet 192.12.1.0 netmask 255.255.255.0 {
}

# Begin group options
group {
    option subnet-mask 255.255.255.0;
    option broadcast-address 192.12.1.255;

    # Device information
    host el-16 {
        hardware ethernet 00:a0:e7:21:88:f9;
        fixed-address 192.12.1.20;
        filename "80007008_B.bin";
    }
    # Device information
    host el-16-2 {
        hardware ethernet 00:a0:e7:21:c7:e3;
        fixed-address 192.12.1.21;
        filename "80007008_B.bin";
    }
}
# End group options

```

6. Use the `chkconfig(8)` and set `tftp` to on.

7. Restart the `xinetd(8)` daemon, as follows:

```
[root@linux2 root]# /etc/rc.d/init.d/xinetd restart
```

8. Start the dhcpd(8) daemon, as follows:

```
[root@linux2 root]# chkconfig dhcpd on; /etc/rc.d/init.d/dhcpd start
```

9. Use the tail(1) command and watch for DHCP messages, as follows:

```
[root@linux2 root]# tail -f /var/log/messages
Jun 17 17:40:30 console-dino dhcpd: DHCPREQUEST for 192.12.1.20 from 00:a0:e7:21:88:f9 via eth1
Jun 17 17:40:30 console-dino dhcpd: DHCPACK on 192.12.1.20 to 00:a0:e7:21:88:f9 via eth1
Jun 17 17:41:24 console-dino dhcpd: DHCPREQUEST for 192.12.1.21 from 00:a0:e7:21:c7:e3 via eth1
Jun 17 17:41:24 console-dino dhcpd: DHCPACK on 192.12.1.21 to 00:a0:e7:21:c7:e3 via eth1
```

10. Power cycle each Digi device making sure to wait at least 10 seconds between power off and power on.

Here is the information and warning from SGIconsole_startup script, as follows:

```
To perform an upgrade to any EtherLite units you plan to use with
SGIconsole, you MUST connect them to a network via /dev/eth1 and
power cycle the units NOW to update their firmware. Only EtherLite
units which are restarted will have their firmware overwritten.
```

```
It is suggested that you remove power from the EtherLite unit by
unplugging the power cord, waiting 10 seconds, and then re-applying
power to the unit. The EtherLite unit will then reinitialize itself,
and the LEDs will flicker quickly while the firmware upgrade progresses.
```

```
*** DO NOT DISCONNECT POWER TO AN ETHERLITE UNIT WHILE A FIRMWARE
    UPGRADE IS IN PROGRESS OR THE UNIT WILL BE DAMAGED.
```

```
Wait a few seconds until the LEDs on the EtherLite unit stop flashing
(the LEDs should remain lit).
```

11. Login to devices and verify the realport firmware is loaded, as follows:

```
[root@linux2 root]# rlogin el-16

EL-16 RealPort Server - US Patent No. 6,047,319
      \_____+note: RealPort
? ver
Product:  EL-16
FW Ver:   V1.2 <-----Firmware version
```

```
Ethernet: 00:A0:E7:21:88:F9
IP:       192.12.1.20
GW IP:    0.0.0.0
SN Mask:  255.255.255.0
Lease:    0xA217
UpTime:   2435641 sec
Boot Host: 192.12.1.7
Bootfile: 80007008_B.bin
ICMP error (303) getting Bootfile: destination unreachable
? exit
? rlogin: connection closed.
```

If it is not updated, try power cycle again making sure to wait at least 10 seconds between power off and power on.

12. Use the `chkconfig(8)` and set `tftp` to off.
13. Restart the `xinetd(8)` daemon, as follows:

```
[root@linux2 root]# /etc/rc.d/init.d/xinetd restart
```

Index

C

- Changing the appearance of your X terminal, 53
- Client Machines running Console Manager, 53
- Configuring Red Hat Enterprise Linux ES 3.0 or WS 3.0 Linux server installation, 23
- Configuring SGIconsole 2.1, 32
- Console Manager
 - See "Console Manager graphical user interface", 5
- Console Manager graphical user interface
 - Console Manager GUI, 5
- Creating a KickStart floppy, 23

D

- Description, 1
- Determining the hardware address of the L2 system controller, 47

F

- File locations, 20
- Functionality, 5

I

- Installing Red Hat Enterprise Linux ES 3.0 or WS 3.0 Release, 21
- Installing SGIconsole 2.1, 29

L

- L1 controller, 9
- L2 controller, 9, 47

O

- Overview, 1

P

- Performance Co-Pilot, 6
 - tools
 - clustervis, 7
 - dkvis, 7
 - mpvis, 7
 - oview, 7
 - pmchart, 7
 - pmgcluster, 7
 - pmgsys, 7

R

- Reconfiguring the Flash BIOS, 19
- Reinstallation procedure, 11
- Replacing EtherLite firmware with Realport firmware, 58

S

- Security assumptions, 1
- Security requirements, 11
- Setting up SGIconsole, 11

Setting up SGIconsole hardware, 12
SGIconsole central server control environment, 1
System controller software, 9

T

Text-base interface
 See "tscm text-based interface", 6
tscm text-based interface, 6
tscm(1) command
 See "tscm text-based interface", 6

U

Upgrading from SGIconsole 1.1 or 2.0 to
 SGIconsole 2.1, 12
Using SGIconsole, 51
Using the PROM command monitor, 57

X

X terminal appearance, 53