

SGI® InfiniteStorage NAS 4550 and NAS 4050
Quick Start Guide

007-4900-001

CONTRIBUTORS

Written by Mark Schwenden

Illustrated by Chrystie Danzer

Production by Mark Schwenden

Additional contributions by Greg Banks, Tim Fosvik, Mark Goodwin, Ivan Rayner and Ted Wood

COPYRIGHT

© 2006, SGI. All rights reserved; provided portions may be copyright in third parties, as indicated elsewhere herein. No permission is granted to copy, distribute, or create derivative works from the contents of this electronic documentation in any manner, in whole or in part, without the prior written permission of Silicon Graphics, Inc.

LIMITED RIGHTS LEGEND

The electronic (software) version of this document was developed at private expense; if acquired under an agreement with the USA government or any contractor thereto, it is acquired as "commercial computer software" subject to the provisions of its applicable license agreement, as specified in (a) 48 CFR 12.212 of the FAR; or, if acquired for Department of Defense units, (b) 48 CFR 227-7202 of the DoD FAR Supplement; or sections succeeding thereto. Contractor/manufacturer is Silicon Graphics, Inc., 1200 Crittenden Lane, Mountain View, CA 94043-1351.

TRADEMARKS AND ATTRIBUTIONS

SGI, the SGI logo and Altix are registered trademarks of SGI, in the United States and/or other countries worldwide.

NAS 4550 and NAS 4050 Quick Start Information

This document guides a knowledgeable user through the basic setup of an SGI InfiniteStorage NAS 4550 or NAS 4050 system. Professional assistance with the setup of your new NAS solution is available through SGI Managed Services. If you ordered such service, please contact the SGI Customer Support Center to schedule the onsite visit. If you are performing your own setup for the NAS Manager, see “Software Configuration” on page 7. Please retain this guide for future reference.

For more detailed information on the hardware or software products used in the SGI NAS 4550, or NAS 4050, refer to one of the following guides:

- *SGI InfiniteStorage NAS Manager User's Guide* (P/N 007-4699-00x)
- *SGI InfiniteStorage 4000 RAID User's Guide* (P/N 007-4834-00x)
- *SGI InfiniteStorage 4500 RAID User's Guide* (P/N 007-4843-00x)
- *SGI Altix 450 System User's Guide* (P/N 007-4857-00x)

These documents are available in PDF format on the CD that comes with your SGI NAS system. The *SGI Altix 450 System User's Guide* is available in hard copy. Or, documents can be accessed and downloaded via internet from the SGI publications library:

<http://docs.sgi.com>

Various formats are available. This library contains the most recent and most comprehensive set of online books, release notes, man pages, and other information.

This document contains the following major topics:

- “NAS System Hardware Setup” on page 4
- “Powering On a NAS System” on page 6
- “Software Configuration” on page 7
- “Contacting the SGI Customer Service Center” on page 9

NAS System Hardware Setup

Depending on the system ordered, your SGI NAS 4550 or NAS 4050 has a RAID enclosure (housing one or two RAID controllers), and one or two drive expansion enclosures. The system should be mounted in a rack and cabled prior to installation. See the *SGI NAS 4050 and NAS 4550 System Rack Installation Instructions* (P/N 007-4940-00x) for information on rack setup.

This section briefly describes the hardware your NAS system configuration uses.

Note: Always keep the RAID controller enclosure and drive enclosures distributed below the data manager(s). In addition, you always want to keep the majority of the weight in the bottom half of the rack for safety reasons.

Figure 1-1 identifies the ports and indicators on the front and rear of a NAS 4050 RAID controller module.

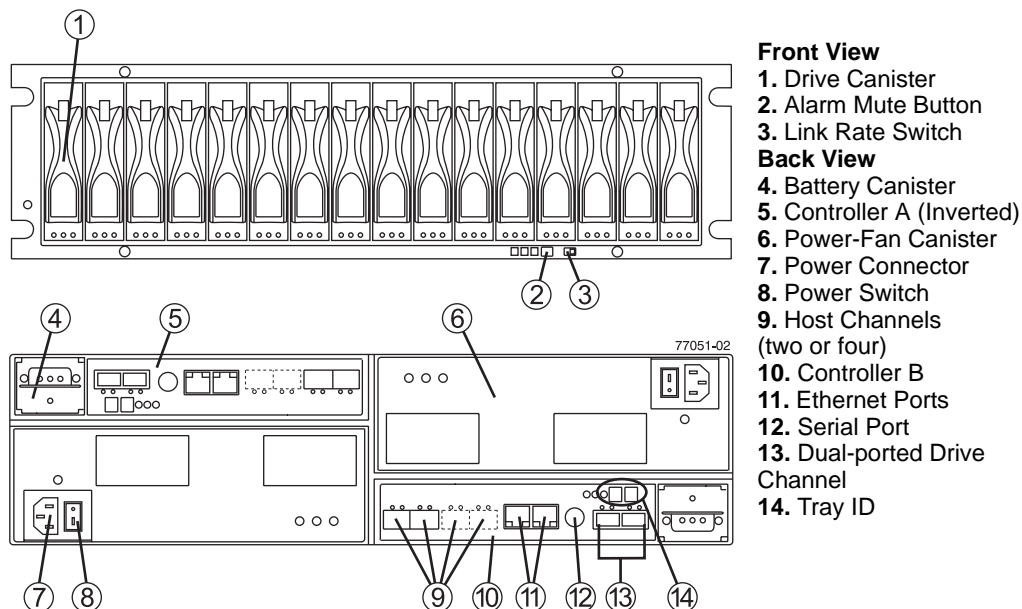


Figure 1-1 NAS 4050 RAID Controller/Drive Enclosure Front and Rear Components

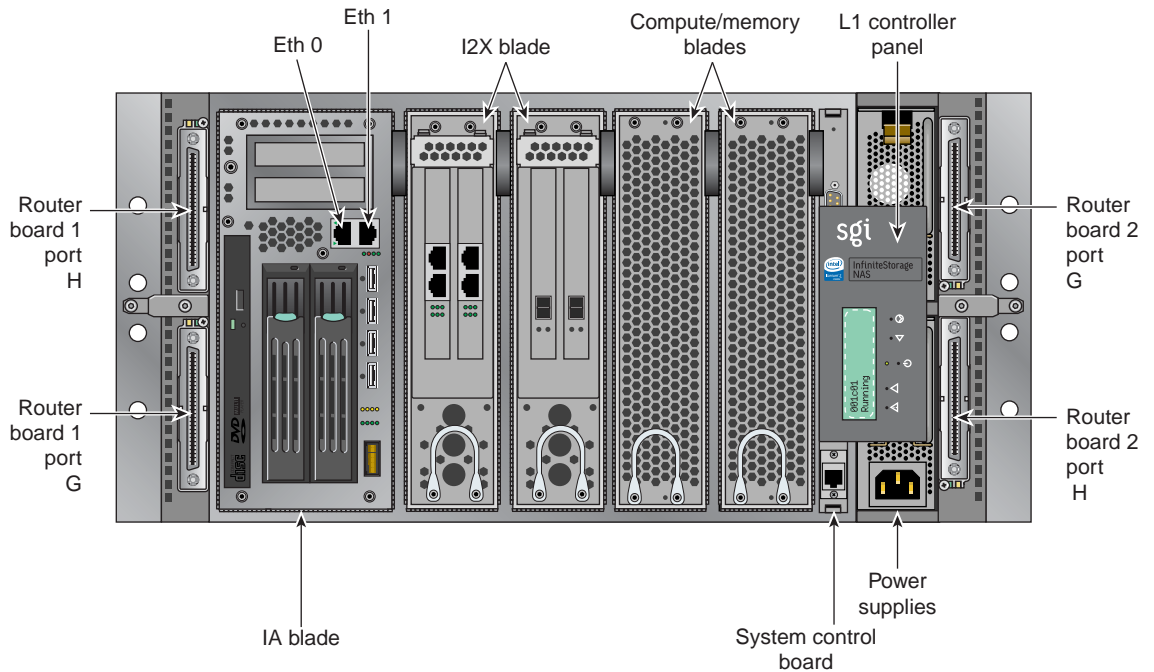


Figure 1-2 NAS 4050 Data Manager Connector Example

Figure 1-3 shows the ports and indicators on the 4550 RAID controller module. Note that each NAS 4550 controller module uses a stacked pair of controllers (installed in the rear of the enclosure). All data manager and drive connections are routed through the controllers, see the *SGI InfiniteStorage 4500 RAID User's Guide (P/N 007-4843-00x)* for more information.

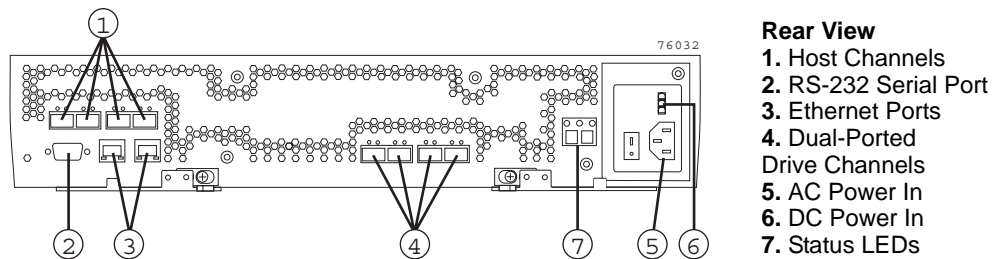


Figure 1-3 NAS 4550 (RAID Controller Canister Only) Connector Ports

Figure 1-4 on page 6 shows an example of the NAS 4550 data manager's connectors.

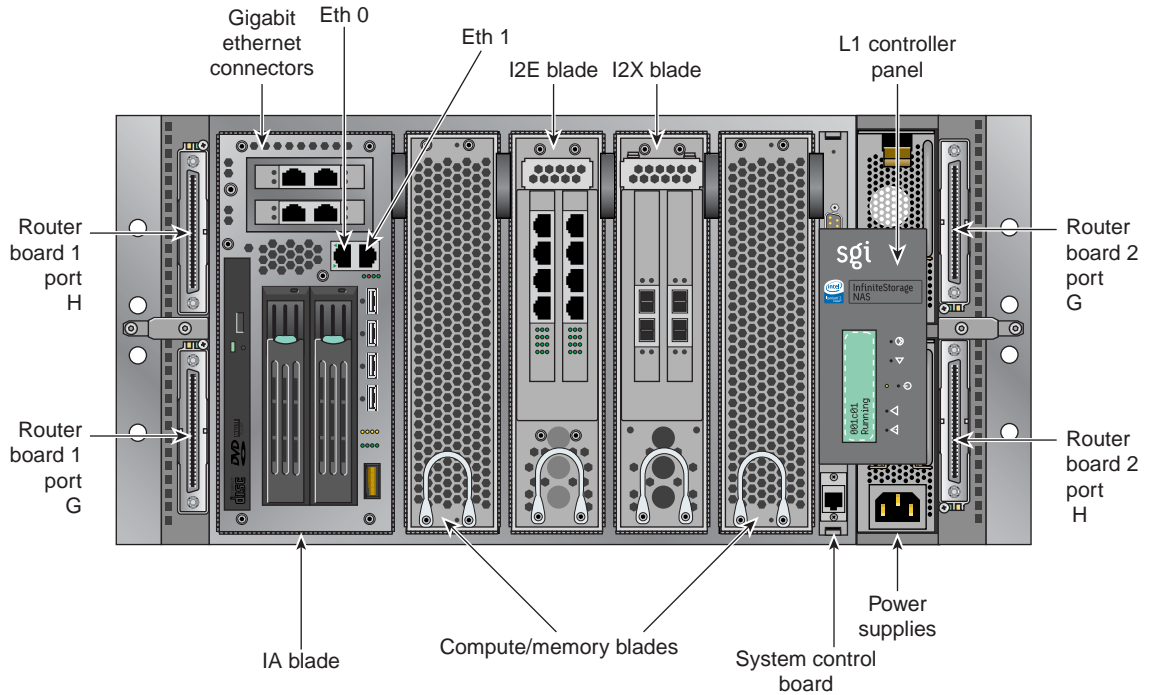


Figure 1-4 NAS 4550 Data Manager Connectors Example

Powering On a NAS System

Confirm that your NAS system power cables are properly plugged into the power distribution units(s) in the rack chassis. See the *SGI NAS 4050 and NAS 4550 System Rack Installation Instructions* (P/N 007-4940-00x) for more information. Refer to the applicable SGI InfiniteStorage RAID user's guide for more detailed power requirements.

Turn on the power to all connected drive enclosures before you turn on the controller enclosure. This action ensures that the controllers recognize each attached drive enclosure. The data manager should be powered up last.

Software Configuration

If your NAS system's hardware is configured and powered on, use the SGI InfiniteStorage NAS Manager Setup Wizard to set up the initial software configuration of your SGI NAS Data Manager appliance.

It should only be run after the hardware setup instructions have been completed and verified and the machine has been powered up. To run the wizard, connect a cross-over ethernet cable from a laptop or PC to the primary ethernet port on the Altix NAS Data Manager appliance. The cable plugs into the management Ethernet port on the unit's IA blade, (Eth 0) in Figure 1-5.

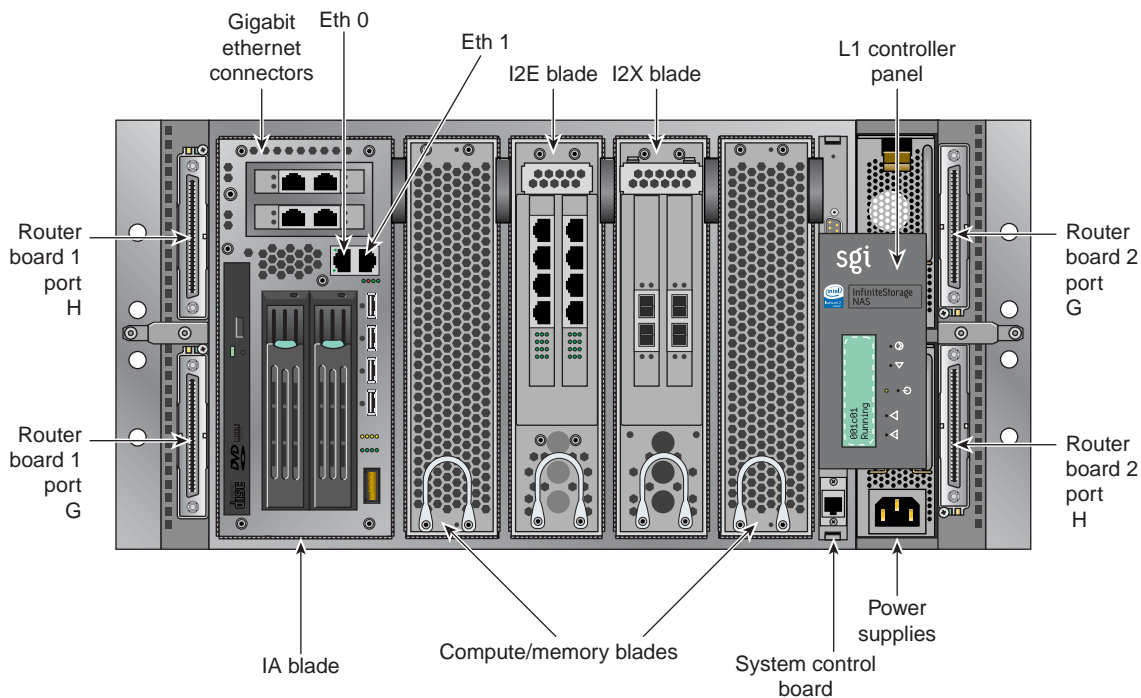


Figure 1-5 Ethernet Connection Example to Data Manager

Then launch a web browser to the following URL:

<https://192.168.9.9:1178>

Note: You may need to temporarily reset the IP address of the laptop or PC to 192.168.9.1 for this to work correctly.

The setup wizard is intended to be easy to use and leads you through the initial system configuration steps. Figure 1-6 shows an example of the start screen. For details, see the *SGL InfiniteStorage NAS Manager User's Guide*, (P/N 007-4699-00x).

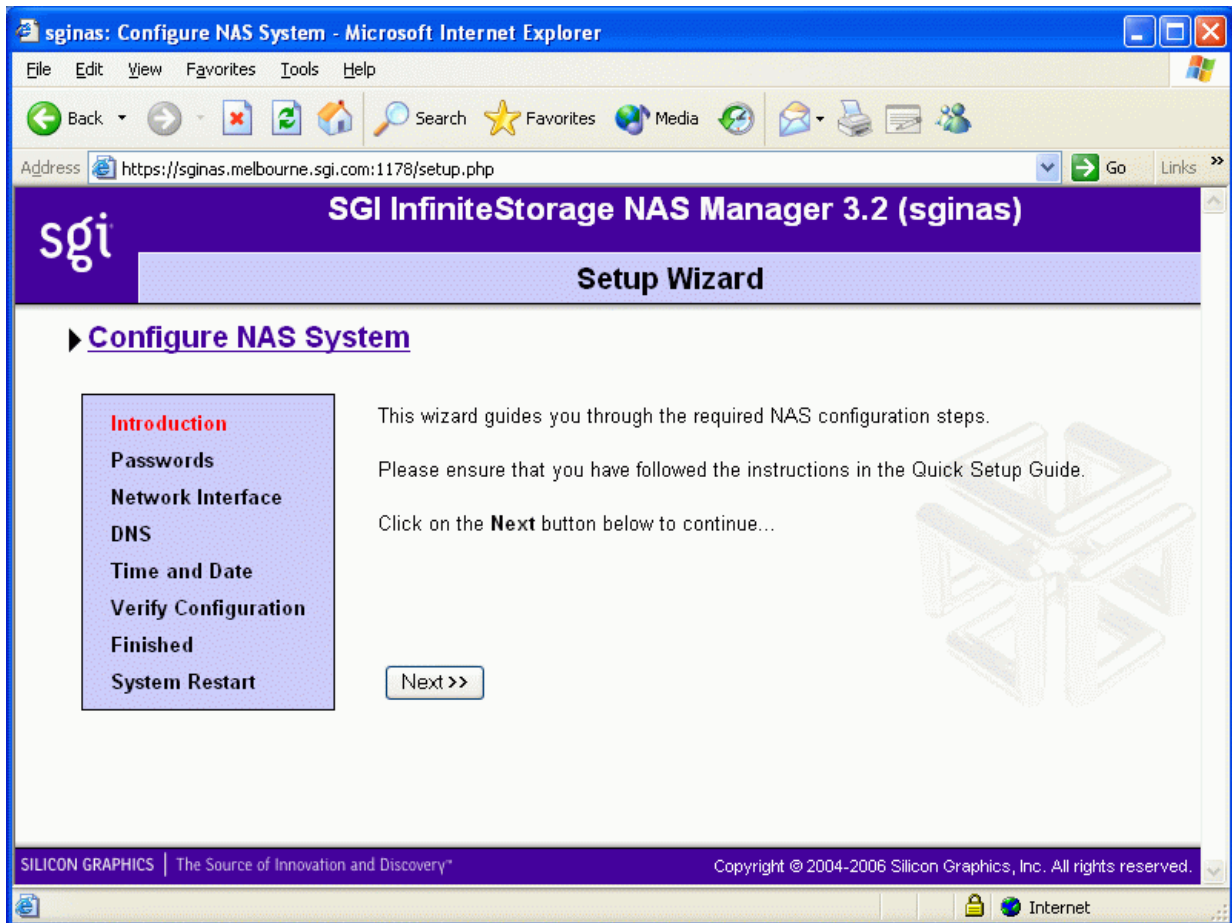


Figure 1-6 NAS Manager Setup Wizard Screen Example

Once the software setup phase has completed, the SGI NAS Data Manager will require a restart.

Afterwards, you should remove the cross-over cable and plug the system into the local network. Once the system has been restarted, you can monitor its performance, or change the software configuration by going to <https://your.server:1178/>.

Contacting the SGI Customer Service Center

To contact the SGI Customer Service Center, call 1-800-800-4SGI, or visit <http://www.sgi.com/support/customerservice.html>.

From outside the United States, contact your local SGI sales office.

