

**SGI® InfiniteStorage NEXIS 7000  
Quick Start Guide**

007-5407-001

---

## **COPYRIGHT**

© 2007, SGI. All rights reserved; provided portions may be copyright in third parties, as indicated elsewhere herein. No permission is granted to copy, distribute, or create derivative works from the contents of this electronic documentation in any manner, in whole or in part, without the prior written permission of Silicon Graphics, Inc.

---

## **LIMITED RIGHTS LEGEND**

The electronic (software) version of this document was developed at private expense; if acquired under an agreement with the USA government or any contractor thereto, it is acquired as "commercial computer software" subject to the provisions of its applicable license agreement, as specified in (a) 48 CFR 12.212 of the FAR; or, if acquired for Department of Defense units, (b) 48 CFR 227-7202 of the DoD FAR Supplement; or sections succeeding thereto. Contractor/manufacturer is Silicon Graphics, Inc., 1140 East Arques Ave., Sunnyvale, CA 94085.

---

## **TRADEMARKS AND ATTRIBUTIONS**

SGI, the SGI logo and Altix are registered trademarks and NUMALink is a trademark of SGI., in the United States and/or other countries worldwide.

---

# Contents

InfiniteStorage NEXIS 7000 NAS System Hardware Setup . . . . .	6
The High Availability Option . . . . .	7
Powering On the NAS System . . . . .	8
Software Configuration . . . . .	9
Contacting SGI . . . . .	11



# SGI InfiniteStorage NEXIS 7000 Quick Start

This document guides an administrator or end user through the basic setup of an SGI InfiniteStorage NEXIS 7000 NAS system. Professional assistance with the setup of your new NAS solution is available through SGI Managed Services. If you ordered such service, please contact the SGI Customer Support Center to schedule the onsite visit. If you are performing your own setup for the Appliance Manager, see “Software Configuration” on page 9. Please retain this guide for future reference.

For more detailed information on the hardware or software products used in the SGI InfiniteStorage NEXIS 7000, refer to the following guides:

- *SGI InfiniteStorage Appliance Manager User's Guide* (P/N 007-4699-005 or later)
- *SGI Altix 450 System User's Guide* (P/N 007-4857-00x)
- *SGI InfiniteStorage 4000 RAID User's Guide* (P/N 007-4834-00x)

The *SGI Altix 450 System User's Guide* is available in hard copy. Or, all SGI user documents can be accessed and downloaded via internet from the SGI publications library:

<http://docs.sgi.com>

Various formats are available. This library contains the most recent and most comprehensive set of online books, release notes, man pages, and other information for end users.

This document contains the following major topics:

- “InfiniteStorage NEXIS 7000 NAS System Hardware Setup” on page 6
- “Powering On the NAS System” on page 8
- “Software Configuration” on page 9
- “Contacting SGI” on page 11

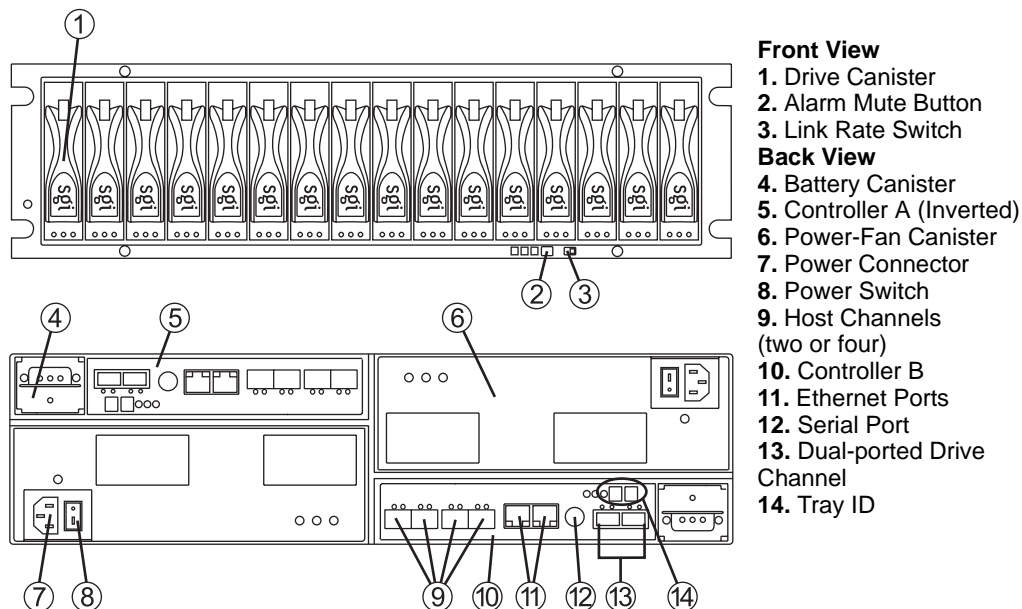
## InfiniteStorage NEXIS 7000 NAS System Hardware Setup

Depending on the system ordered, your SGI NAS system has a RAID enclosure (housing two RAID controllers plus 16 drives), and optional drive expansion enclosures. The system should be mounted in a rack and cabled prior to installation. See the *Rack Installation Instructions* document that comes with your product for information on rack setup.

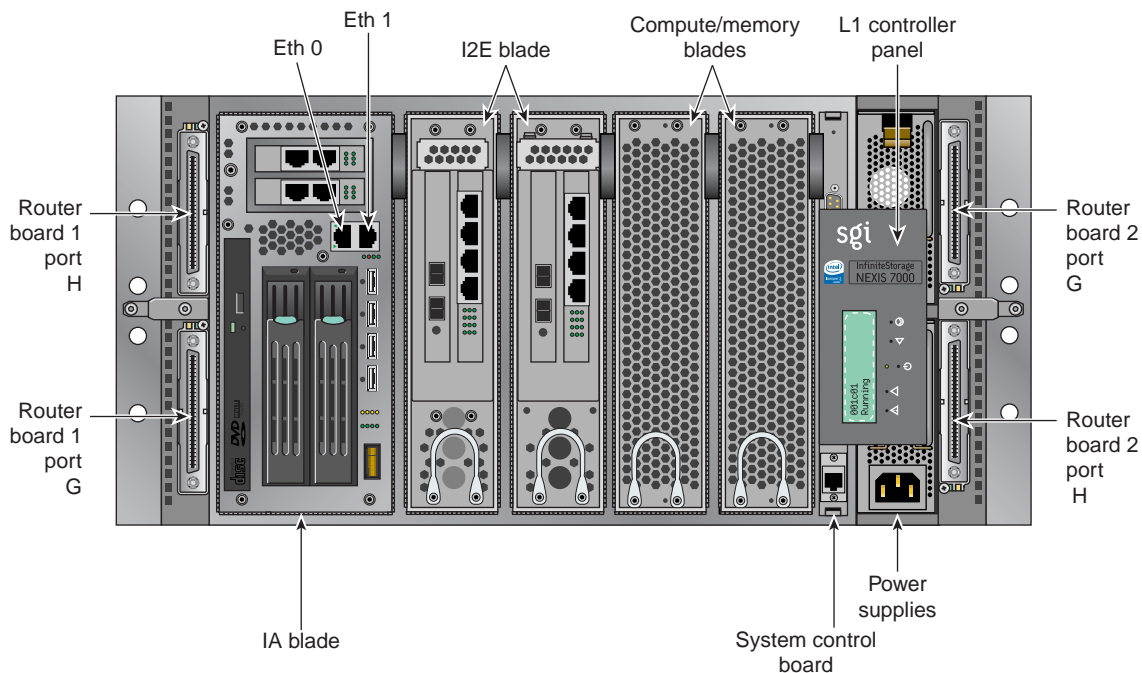
This section briefly describes the hardware your NAS system configuration uses.

**Note:** Always keep the RAID controller enclosure and drive enclosures distributed below the compute appliance(s). In addition, you always want to keep the majority of the weight in the bottom half of the rack for safety reasons.

Figure 1-1 identifies the ports and indicators on the front and rear of an SGI InfiniteStorage NEXIS 7000 RAID controller/drive module.



**Figure 1-1** RAID Controller/Drive Enclosure Front and Rear Components



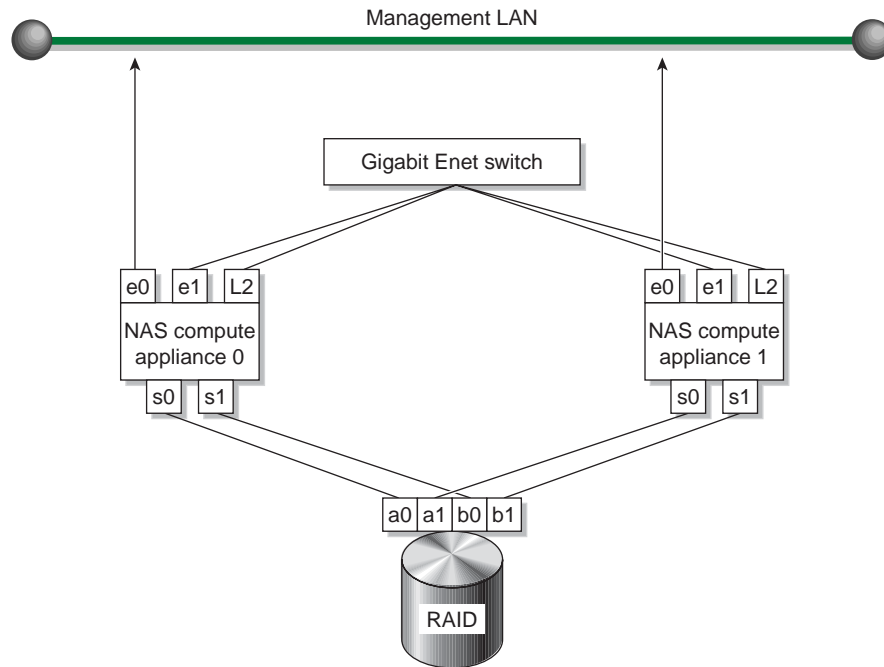
**Figure 1-2** SGI InfiniteStorage NEXIS 7000 Compute Appliance Connectors Example

## The High Availability Option

The SGI InfiniteStorage NEXIS 7000 NAS system has an optional high availability (HA) feature that provides the NAS greater overall redundancy of operation.

The high availability version of the NAS system has the following features:

- Two compute appliance units instead of one (see Figure 1-3 on page 8 for an example).
- A separate external gigabit Ethernet switch that provides:
  - A private high availability network
  - Direct communication between the L2 Ethernet ports on each compute appliance
  - Ethernet 1 connection between the compute appliances
- Dual connect RAID which provides two data paths from each compute appliance



**Figure 1-3** High Availability Option Functional Example Diagram

---

**Note:** There is no NUMalink connectivity between the two compute appliances.

---

## Powering On the NAS System

Confirm that your NAS system power cables are properly plugged into the power distribution unit(s) in the rack chassis. Refer to the applicable SGI InfiniteStorage RAID user's guide for more detailed power requirements.

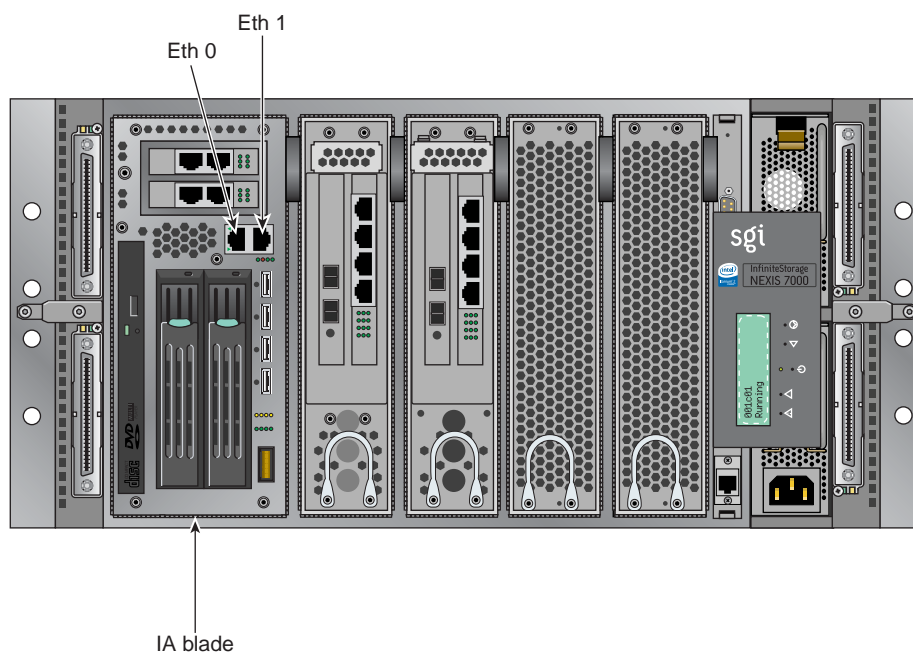
Turn on the power to all connected drive enclosures before you turn on the controller enclosure. This action ensures that the controllers recognize each attached drive enclosure. The compute appliance(s) should be powered up last.



## Software Configuration

If your NAS system's hardware is configured and powered on, use the SGI Appliance Manager Setup Wizard to set up the initial software configuration of your SGI NAS compute appliance.

It should only be run after the hardware setup instructions have been completed and verified and the machine has been powered up. To run the wizard, connect a cross-over ethernet cable from a laptop or PC to the primary ethernet port on the NAS compute appliance. The cable plugs into the port 0 Ethernet connector on the unit's IA blade, see Figure 1-4.



**Figure 1-4** Ethernet Connection Example to Compute Appliance

Then launch a web browser to the following URL:

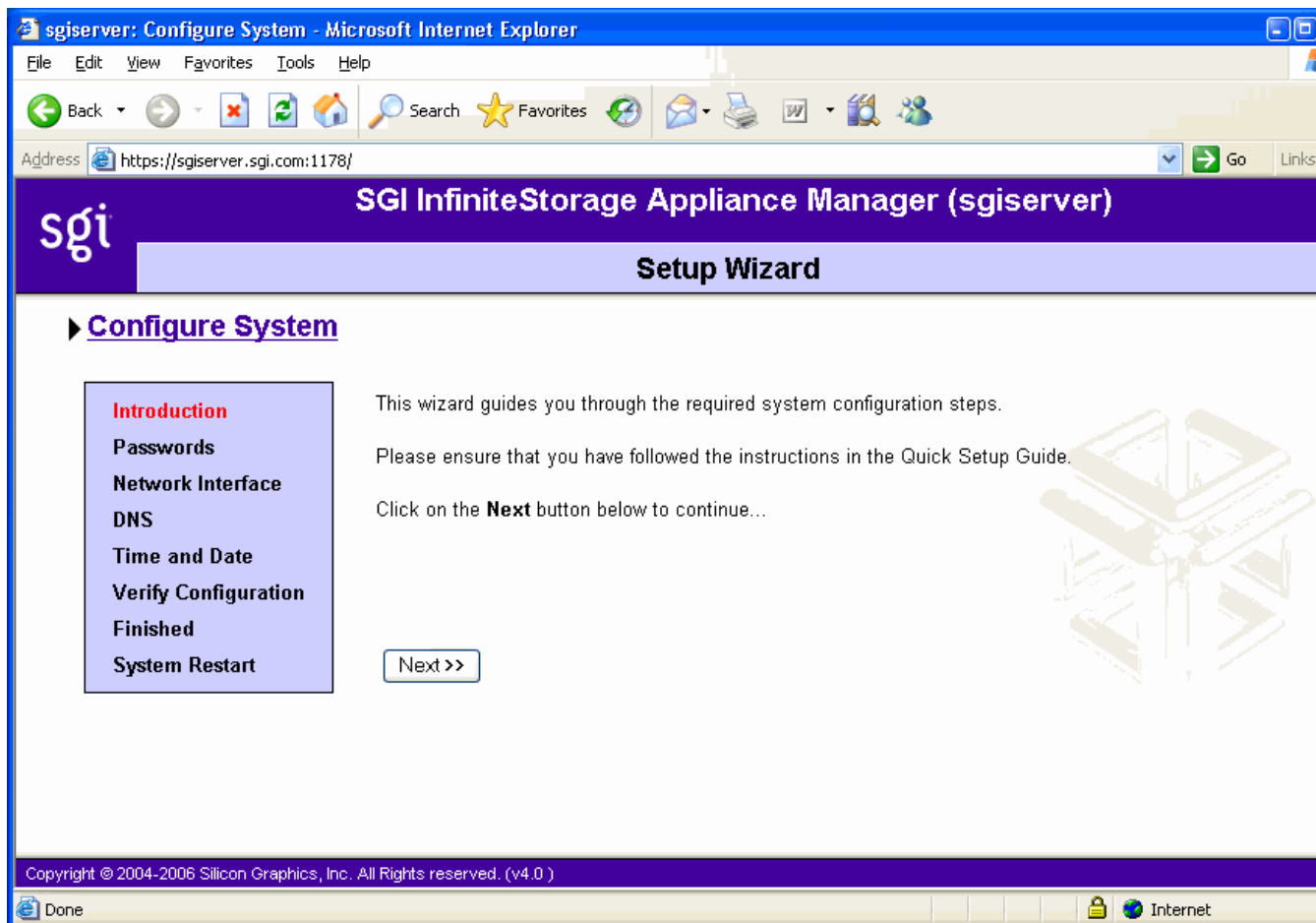
<https://192.168.9.9:1178>

---

**Note:** You may need to temporarily reset the IP address of the laptop or PC to 192.168.9.1 for this to work correctly.

---

The setup wizard is intended to be easy to use and leads you through the initial system configuration steps. Figure 1-5 shows an example of the start screen. Reference the *SGI InfiniteStorage Appliance Manager User's Guide*, (P/N 007-4699-005 or later). Note that only revision five or later will have the applicable information for this NAS product.



**Figure 1-5** InfiniteStorage Appliance Manager Setup Wizard Screen Example

Once the software setup phase has completed, you must restart the SGI NAS compute appliance. Afterwards, you should remove the cross-over cable and plug the system into the local area network. Note that once the system has been restarted, you can monitor its performance, or change the software configuration by going to <https://your.server:1178/>.

## Contacting SGI

To contact the SGI Customer Service Center, call 1-800-800-4SGI, or visit <http://www.sgi.com/support/customerservice.html>.

From outside the United States, contact your local SGI sales office.

For more information on available SGI storage products, see:  
<http://www.sgi.com/storage>

To reach SGI for other purposes, use the following contact information:

SGI Corporate Office

1140 E. Arques Avenue

Sunnyvale, CA 94085

(650) 960-1980

<http://www.sgi.com>

North America +1 800.800.7441

Latin America +55 11.5185.2860

Europe +44 118.912.7500

Japan +81 3.5488.1811

Asia Pacific +1 650.933.3000

