

WHITE PAPER

November 2002

Prepared by
iPAQ Mobile Solutions

Hewlett-Packard
Company

Content on
Peacemaker
contributed by:
Barry Shilmover
Chief Technical
Evangelist
Sonic Mobility Inc.

Cross-Platform Communications with *iPAQ* Pocket PCs

Sending and receiving information with the *iPAQ* Pocket PC to other *iPAQ* Pocket PCs or Palm™ OS-based devices can be accomplished with various applications. In this document, the Peacemaker Pro application will be discussed in detail because it offers *iPAQ* Pocket PC users several options. A brief discussion of other third-party applications also will be discussed.

CONTENTS

PEACEMAKER PRO	3
INSTALLING PEACEMAKER PRO4	
SENDING AND RECEIVING	
FILES	5
Appointments	5
Business Cards	7
Contacts	9
Memos (Notes)	11
PDB Files (Database Files)	13
Tasks	14
Files	15
OTHER THIRD-PARTY	
SOFTWARE	17
ADDRESS BEAM	17
BSQUARE EZBEAM	17
PALM@HAND	17
SYNCTALK 2.0	17



Notice

The information in this publication is subject to change without notice.

HEWLETT-PACKARD COMPANY SHALL NOT BE LIABLE FOR TECHNICAL OR EDITORIAL ERRORS OR OMISSIONS CONTAINED HEREIN, NOR FOR INCIDENTAL OR CONSEQUENTIAL DAMAGES RESULTING FROM THE FURNISHING, PERFORMANCE, OR USE OF THIS MATERIAL.

This publication does not constitute an endorsement of the product or products that were tested. The configuration or configurations tested or described may or may not be the only available solution. This test is not a determination of product quality or correctness, nor does it ensure compliance with any federal, state, or local requirements. Hewlett-Packard Company does not warrant products other than its own strictly as stated in Hewlett-Packard product warranties.

Other product and company names mentioned herein may be trademarks and/or service marks of their respective owners.

©2002 Hewlett-Packard Company

First Edition November 2002

Part Number 5981-4267EN

PEACEMAKER PRO

Peacemaker Pro is a cross-platform infrared transfer utility that works with the *iPAQ* Pocket PC. Peacemaker integrates itself into the Contacts application of the *iPAQ* Pocket PC.

With Peacemaker Pro, there are two menu items that are normally not present on the Tools popup menu: Beam Selected and Card Exchange. Beam Selected will beam the selected contacts, and Card Exchange will transfer your virtual business card.

Peacemaker allows multiple items of the same type to be sent during a single transfer session. The only exception to this is the Business Card transfer function. Only one Business Card can be sent during a transfer session.

With Peacemaker Pro you can send and receive the following file types:

- Appointments
- Business Cards
- Contacts
- Memos (Notes)
- PDB Files (Database Files)
- Tasks
- Files

For the latest drivers to support Peacemaker, refer to the following website:

<http://www.compaq.com/support/files/handheld/iPAQ/us/index.html>

Note: The Peacemaker software is not available on all Companion CDs. The availability of this software is based on the SKU purchased. If it is not available with your SKU or if you want to use another third-party software program, see the “Other Third-Party Software” section at the end of this document.

Installing Peacemaker Pro

To install Peacemaker Pro from the *iPAQ* Pocket PC Companion CD, perform the following steps on the desktop:

1. Insert the Companion CD.
2. From the Getting Started screen, select the **Enhance Your Pocket PC** tab.
3. Select the **Productivity** option from the next screen.
4. Scroll down to the Peacemaker application and select the **Details** button.
5. From this next screen, select **Install**.
6. Select the **Run from this Location** option.
7. Select **Open to Run installation of Peacemaker**.
8. After the installation is complete on the desktop, click the **Setup** button.
9. Read the License Agreement and click the **I Agree** button.
10. The ActiveSync Add/Remove Programs application will launch and ask you if you want to install Conduits Peacemaker. Click the **Yes** button.
11. Click on the **OK** button to complete the installation.

Sending and Receiving Files

The following sections detail the steps necessary to send and receive files using Peacemaker Pro.

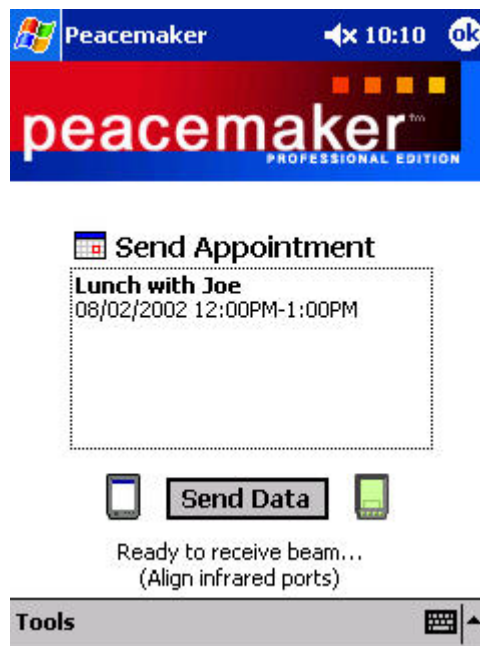
Appointments

This section discusses the steps necessary to successfully transfer Appointments from the *iPAQ* Pocket PC to a Palm device.

Sending an Appointment

To send an Appointment from your *iPAQ* to a Palm-based operating system, follow these steps:

1. Go to the Calendar application on the *iPAQ* Pocket PC.
2. Select the Appointment to send with a tap-and-hold.
3. Select the **Peacemaker** option from the menu.
4. Align the IR ports of the *iPAQ* Pocket PC and the Palm and tap the **Send Data** button from the Peacemaker application (see the following figure).



Receiving an Appointment

To receive an Appointment from a Palm device, follow these steps:

1. On the Palm, go to the Date Book application.
2. On the *iPAQ* Pocket PC, launch the Peacemaker application.
3. Select the Appointment to be sent.
4. Select the **Beam Event** option from the menu.
5. Align the IR ports of the *iPAQ* and the Palm.
6. A *Received File* dialog box will display on your *iPAQ* Pocket PC (see the following figure). Specify a category if you so desire and tap the **Yes** button.



Business Cards

This section discusses the steps necessary to successfully transfer a business card from the *iPAQ* Pocket PC to a Palm device.

Sending a Business Card

To send a Business Card (also known as exchanging a Business Card) from your *iPAQ* Pocket PC to a Palm, follow these steps:

1. Go to the Contacts application on the *iPAQ* Pocket PC.
2. Select any contact with a tap-and-hold.
3. Select the **Card Exchange** option from the menu.
4. Align the IR ports of the *iPAQ* Pocket PC and the Palm and tap the **Send Data** button from the Peacemaker application (see the following figure).



Note: If you want to change the Business Card that you are sending, tap the **Select Card** button.

Receiving a Business Card

To receive a Business Card from a Palm device, follow these tasks:

1. On the Palm, go to the Address Book application.
2. On the *iPAQ* Pocket PC, launch the Peacemaker application.
3. Select the Business Card to be sent to the *iPAQ* Pocket PC on the Palm device.
4. Select the **Beam Business Card** option from the menu.
5. Align the IR ports of the *iPAQ* Pocket PC and the Palm.
6. A *Received File* dialog box will display on your *iPAQ* Pocket PC (see the following figure). Specify a category if you so desire and tap the **Yes** button.



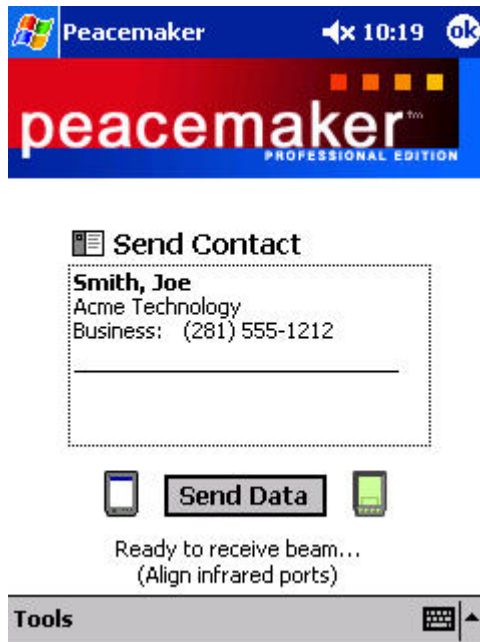
Contacts

This section discusses the steps necessary to successfully transfer Contacts from the *iPAQ* Pocket PC to a Palm device.

Sending a Contact

To send a Contact from your *iPAQ* Pocket PC to a Palm, follow these steps:

1. Go to the Contacts application on the *iPAQ* Pocket PC.
2. Select any contact with a tap-and-hold.
3. Select the **Beam Selected** option from the menu.
4. Align the IR ports of the *iPAQ* Pocket PC and the Palm and tap the **Send Data** button from the Peacemaker application (see the following figure).



Receiving a Contact

To receive a Contact from a Palm device, follow these steps:

1. On the Palm, go to the Address Book application.
2. On the *iPAQ* Pocket PC, launch the Peacemaker application.
3. Select the Contact to be sent.
4. Select the **Beam Address** option from the menu.
5. Align the IR ports of the *iPAQ* Pocket PC and the Palm.
6. A *Received File* dialog box will display on your *iPAQ* Pocket PC (see the following figure). Specify a category if you so desire and tap the **Yes** button.



Memos (Notes)

This section discusses the steps necessary to successfully transfer Notes from the *iPAQ* Pocket PC to a Palm device.

Sending a Note

To send a Note (also known as a Memo) from your *iPAQ* Pocket PC to a Palm, follow these steps:

1. Go to the Peacemaker application on the *iPAQ* Pocket PC.
2. Tap the **Add File** button.
3. Select the **Notes (*.PWI)** option from the **Type** drop-down list.
4. Select the Note to be sent.
5. Align the IR ports of the *iPAQ* Pocket PC and the Palm and tap the **Send Data** button from the Peacemaker application (see the following figure).



Receiving a Memo

To receive a Memo from a Palm device, follow these tasks:

1. On the Palm, go to the Memo Pad application.
2. On the *iPAQ* Pocket PC, launch the Peacemaker application.
3. Select the Memo to be sent.
4. Select the **Beam Memo** option from the menu.
5. Align the IR ports of the *iPAQ* Pocket PC and the Palm.
6. A *Received File* dialog box will display on your *iPAQ* Pocket PC (see the following figure). Specify a category if you so desire and tap the **Yes** button.



PDB Files (Database Files)

This section discusses the steps necessary to successfully transfer PDB files from the *iPAQ* Pocket PC to a Palm device.

Sending a PDB File

To send a PDB File from your *iPAQ* Pocket PC to a Palm, follow these steps:

1. Go to the Peacemaker application on the *iPAQ* Pocket PC.
2. Tap the **Add File** button.
3. To send a PRC file, select the **PDB Files (*.PDB)** option from the **Type** drop-down list and select the file to be sent.
4. Align the IR ports of the *iPAQ* Pocket PC and the Palm and tap the **Send Data** button from the Peacemaker application.

Receiving a PDB File

To receive a file from a Palm device, follow these steps:

1. On the Palm, go to the PDB File.
2. On the *iPAQ* Pocket PC, launch the Peacemaker application.
3. Select the PDB File to be sent.
4. Select the **Beam File** option from the menu.
5. Align the IR ports of the *iPAQ* Pocket PC and the Palm.
6. A *Received File* dialog box will display on your *iPAQ* Pocket PC. Specify a category if you so desire and tap the **Yes** button.

Tasks

This section discusses the steps necessary to successfully transfer Tasks from the *iPAQ* Pocket PC to a Palm device.

Sending a Task

To send a Task from your *iPAQ* Pocket PC to a Palm, follow these steps:

1. Go to the Tasks application on the *iPAQ* Pocket PC.
2. Select the Task you want to send with a tap-and-hold.
3. Select the **Peacemaker** option from the menu.
4. Align the IR ports of the *iPAQ* Pocket PC and the Palm and tap the **Send Data** button from the Peacemaker application (see the following figure).



Receiving a Task

To receive a Task from a Palm device, follow these steps:

1. On the Palm, go to the To Do application.
2. On the *iPAQ* Pocket PC, launch the Peacemaker application.
3. Select the To Do item to be sent.
4. Select the **Beam Item** option from the menu.
5. Align the IR ports of the *iPAQ* Pocket PC and the Palm.
6. A *Received File* dialog box will display on your *iPAQ* Pocket PC (see the following figure below). Specify a category if you so desire and tap the **Yes** button.



Files

Peacemaker allows you to send a variety of other file types from your *iPAQ* Pocket PC to a Palm device. These include:

- Pocket Word Files
- Text Files
- PRC Files

Sending a File

To send a File from your *iPAQ* Pocket PC to a Palm, follow these steps:

1. Go to the Peacemaker application on the *iPAQ* Pocket PC.
2. Tap the **Add File** button.
3. To send a Pocket Word file, select the **Pocket Word (*.PSW)** option from the **Type** drop down-list and select the file to be sent.
4. To send a Text file, select the **Text Files (*.TXT)** option from the **Type** drop-down list and select the file to be sent.
5. To send a JPG file, select the **JPG Files (*.JPG)** option from the **Type** drop-down list and select the file to be sent.
6. To send a PRC file, select the **PRC Files (*.PRC)** option from the **Type** drop-down list and select the file to be sent.
7. Align the IR ports of the *iPAQ* Pocket PC and the Palm and tap the **Send Data** button from the Peacemaker application (see the following figure).



OTHER THIRD-PARTY SOFTWARE

Other third-party applications allow cross-platform file transfer between *iPAQ* Pocket PCs and Palm-based devices using the infrared technology. The following sections discuss some of the programs available. For instructions on how to use these software applications, refer to the accompanying websites.

Address Beam

This application is limited in that it only has the capability to send address cards between an *iPAQ* Pocket PC and a Palm OS-based device. The software has to be installed on both devices. For more information, visit:

http://www.palmix.itil.com/newpalmix/products/addrbeam_home.htm

Bsquare EZBeam

EZBeam provides a way to quickly exchange electronic business cards, set up appointments, and exchange note files with colleagues who own Palm devices. For more information, visit:

<http://www.bsquare.com/>

Palm@Hand

This application allows you to send and receive information between Palm and Windows CE. It allows you to select what information is sent (such as work or home information). Palm@Hand is designed for the Palm-size PCs but it also works on the Pocket PCs. For more information, visit:

<http://home.netcom.com/~johnmcd/techathand/index.htm>

SyncTalk 2.0

This application allows you to send and receive information such as contacts, appointments, and memos, as well as other information, between Pocket PC devices and Palm devices. It offers the most from the applications mentioned in this section. For more information, visit:

<http://synctalk.com>